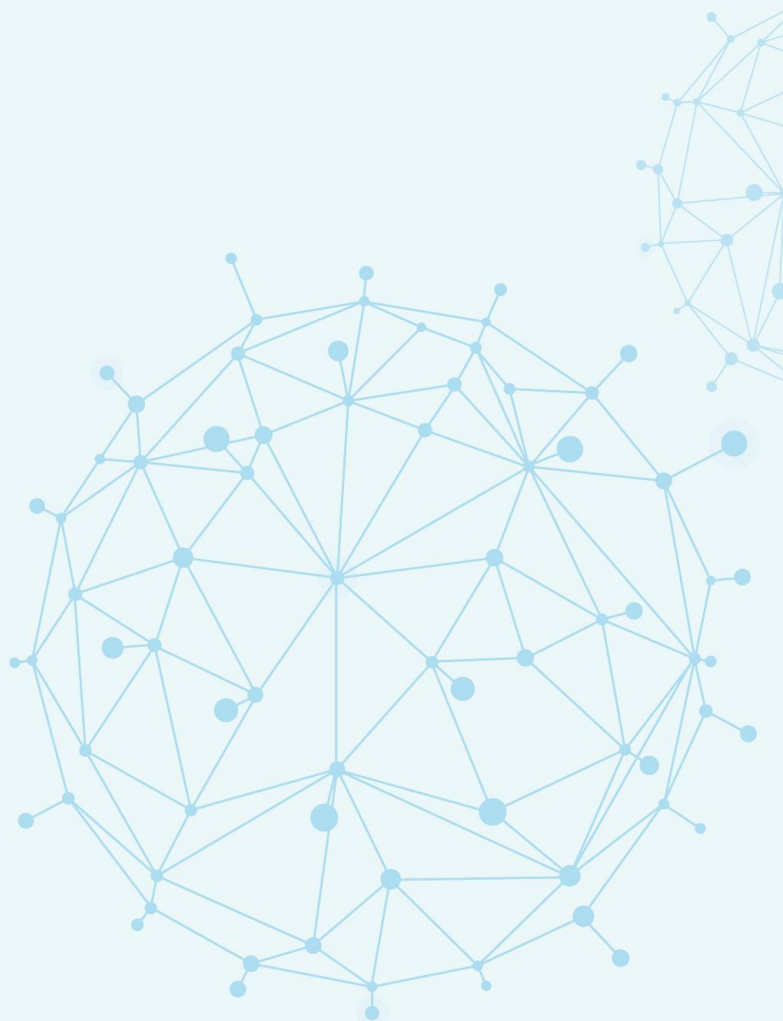


PATOSAFE®

Delivered by PatoGen



PG044216

NTNU

Analysis results.....	Page 2
Detailed test results	
PRV.....	Page 3
Disclaimer.....	Page 6

Details

Farm of origin:	Fish group: Skjerstad, hemne, tosenfjorden	Sampling date: 22.10.18
Farm of origin number:	Species: Brown trout	Samples received: 01.11.18
Submitted by: Bårdsen, Marthe	Strain:	Report released: 06.11.18

Analysis results

Short name:

PRV ●

Target pathogen:

Piscine orthoreovirus (PRV)

Causative agent of the disease:

Associated with Heart and skeletal muscle inflammation (HSMB)

Validated, accredited analysis

Analysis laboratory

PatoGen

Number of samples	83
Approved analyses ¹	81
Positive analyses	0
Tissue	Heart

Detailed test results Page 3

¹The number of approved analyses may differ from the number of received samples in cases where analyses have been given the status "Not approved". Please contact us for further information on test characteristics of PatoGen Real-Time RT-PCR analyses.

Detailed test results

Short name:

PRV ●

Validated, accredited analysis

Number of samples 83
Approved analyses¹ 81
Positive analyses 0
Tissue Heart

Target pathogen:
Piscine orthoreovirus (PRV)
Causative agent of the disease:
Associated with Heart and skeletal muscle inflammation (HSMB)

Test tube code	PRV	Fish number	Pen/tank/cylinder	Clinical signs	Note
FR17859779	Not detected				
FR17859780	Not detected				
FR17859781	Not detected				
FR17859782	Not detected				
FR17859783	Not detected				
FR17859784	Not detected				
FR17859785	Not detected				
FR17859786	Not detected				
FR17859787	Not detected				
FR17859788	Not detected				
FR17859789	Not detected				
FR17859790	Not detected				
FR17859791	Not detected				
FR17859792	Not detected				
FR17859793	Not detected				
FR17859794	Not detected				
FR17859795	Not detected				
FR17859796	Not detected				
FR17859797	Not detected				
FR17859798	Not detected				
FR17859799	Not detected				
FR17859800	Not detected				
FR17859801	Not detected				
FR17859802	Not detected				

Test tube code	PRV	Fish number	Pen/tank/cylinder	Clinical signs	Note
FR17859803	Not detected				
FR17859804	Not detected				
FR17859805	Not detected				
FR17859806	Not detected				
FR17859807	Not detected				
FR17859808	Not detected				
FR17859809	Not detected				
FR17859810	Not detected				
FR17859811	Not detected				
FR17859812	Not detected				
FR17859813	Not detected				
FR17859814	Not detected				
FR17859815	Not detected				
FR17859816	Not detected				
FR17859817	Not detected				
FR17859818	Not detected				
FR17859821	Not detected				
FR17859822	Not approved				
FR17859823	Not detected				
FR17859824	Not detected				
FR17859825	Not detected				
FR17859826	Not detected				
FR17859829	Not detected				
FR17859830	Not detected				
FR17859831	Not detected				
FR17859832	Not detected				
FR17859833	Not detected				
FR17859834	Not detected				
FR17859837	Not detected				
FR17859838	Not detected				
FR17859839	Not detected				
FR17859840	Not detected				
FR17859841	Not detected				

Test tube code	PRV	Fish number	Pen/tank/cylinder	Clinical signs	Note
FR17859842	Not detected				
FR17859845	Not detected				
FR17859846	Not detected				
FR17859847	Not detected				
FR17859848	Not detected				
FR17859849	Not detected				
FR17859850	Not detected				
FR17859853	Not detected				
FR17859854	Not detected				
FR17859855	Not detected				
FR17859856	Not detected				
FR17859857	Not detected				
FR17859858	Not detected				
FR17859861	Not approved				
FR17859862	Not detected				
FR17859863	Not detected				
FR17859864	Not detected				
FR17859865	Not detected				
FR17859866	Not detected				
FR17859868	Not detected				
FR17859869	Not detected				
FR17859870	Not detected				
FR17859871	Not detected				
FR17859872	Not detected				
FR17859873	Not detected				
FR17859874	Not detected				

¹The number of approved analyses may differ from the number of received samples in cases where analyses have been given the status "Not approved". Please contact us for further information on test characteristics of PatoGen Real-Time RT-PCR analyses.

Disclaimer

We greatly appreciate any feedback from our customers. If you have any questions, comments or complaints then please contact us by phone on +47 70 11 69 00 or send an email to **post@patogen.no**.

PatoGen is an biotechnology company with an analytical laboratory accredited by Norwegian Accreditation (registration number TEST 235). This analysis report shall not be modified and should only be reproduced in its entirety, unless otherwise agreed in writing with PatoGen.

It is emphasized that the results reported here are only valid for the samples that were received in PatoGen's laboratory, and the results only relate to the specific infection group, or individual, from which the material originated. Under no circumstances shall PatoGen AS be liable for any claim, damages or other liabilities arising from, out of or in connection with the use of the analysis results in this report.

Signature

Ålesund, 06.11.2018



.....
Tonje Grønningsæter
Laboratoriemedarbeider
PatoGen AS

PATOGEN AS

Post address: Postboks 548, 6001 Ålesund
Visiting address: Rasmus Rønnebergs gate 21, 6002 Ålesund
Telephone: +47 70 11 69 00
Email address: post@patogen.no

PATOGEN NORD AS

Post and visiting address: Klinkerveien 8, 8006 Bodø
Telephone: +47 70 11 69 00
Email address: post@patogen.no