

NYE BODØ LUFTHAVN

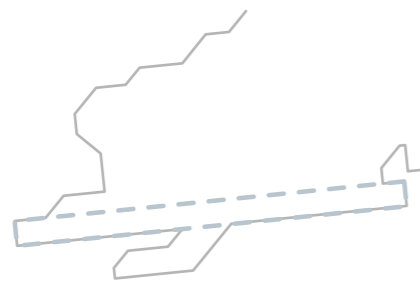
Halvard Bergan Paus og Trond Bjarne Pettersen



Bodø sentrum

Potensielt byutviklingsområde

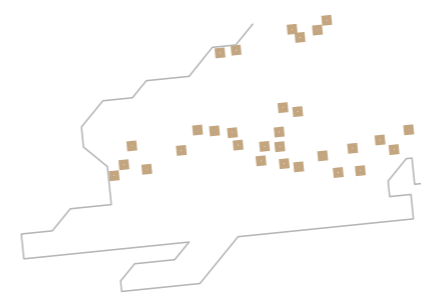
Ny Lufthavn



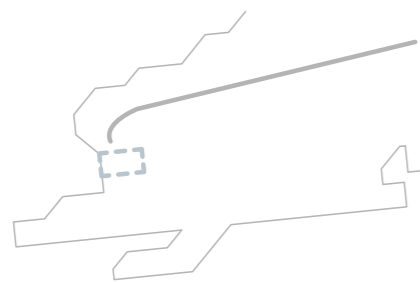
Rullebanen plassert etter utredning fra avinor



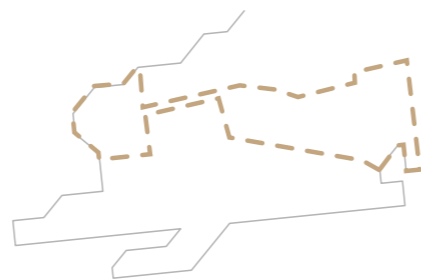
Flyplassområde



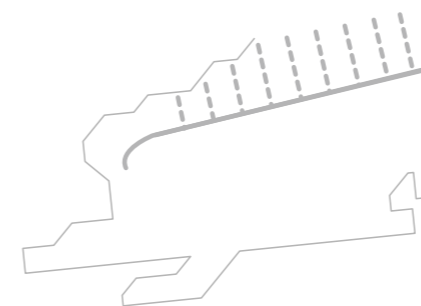
Bevaring av eksisterende flysheltere fra forsvaret



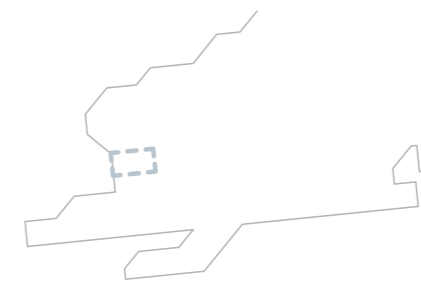
Ankomstakse langs den tidligere rullebanen



Landskapet rundt som støyskjerm



Tenkt byutvikling, radielt på ankomstakse



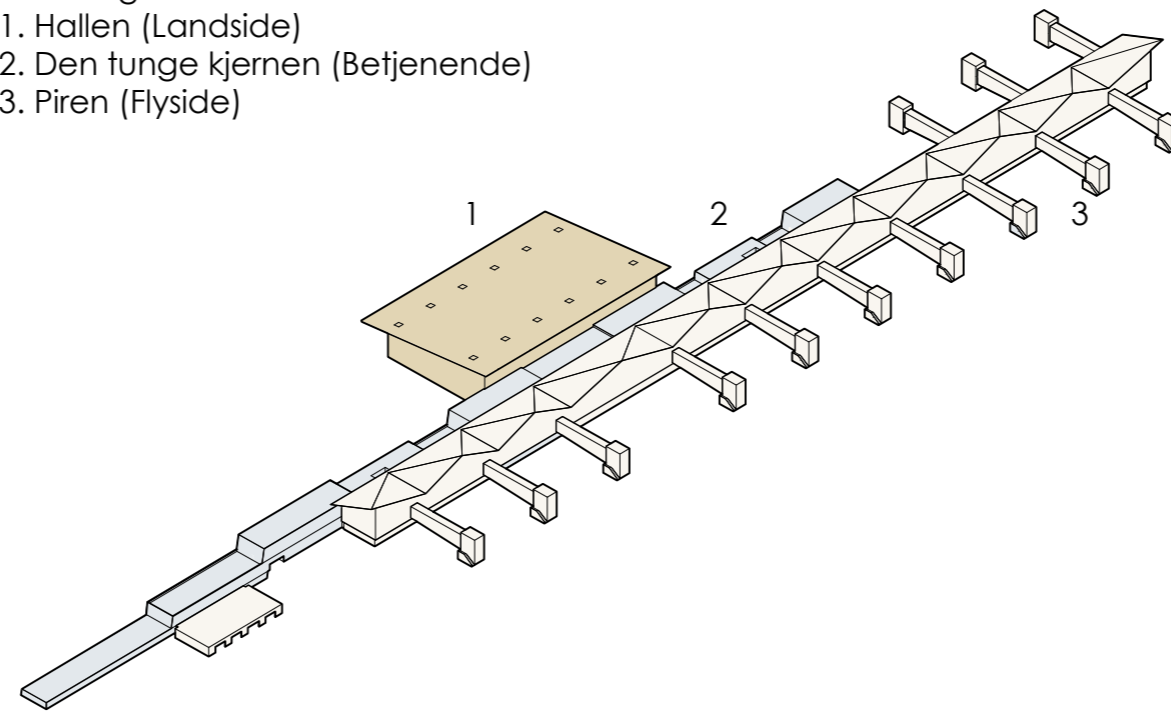
Terminalen plassert ved havet som avslutning på den nye byen

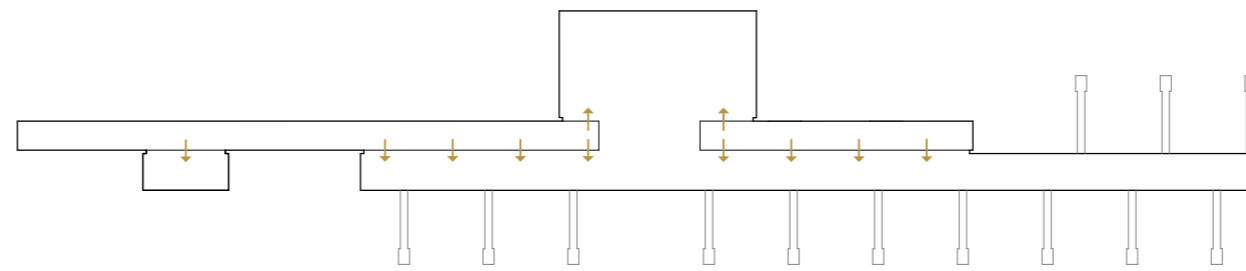




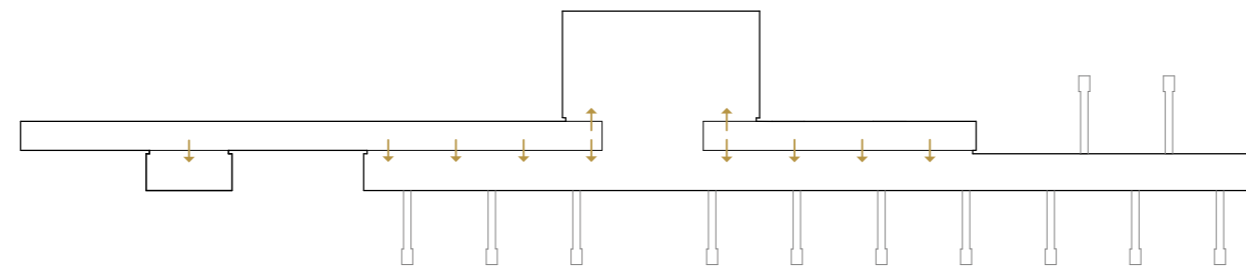
Tredeling

1. Hallen (Landside)
2. Den tunge kjernen (Betjenende)
3. Piren (Flyside)

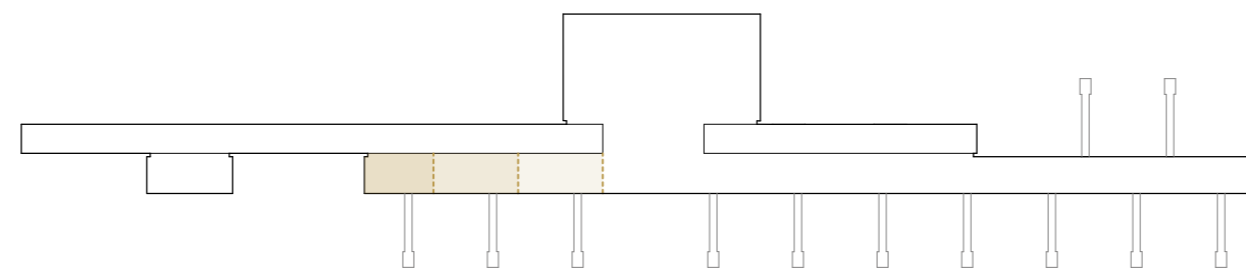




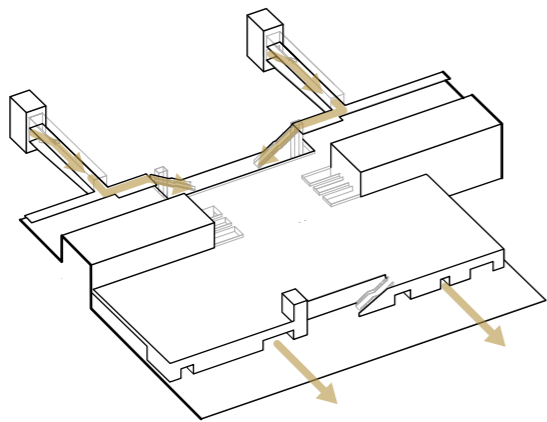
Funksjonene organiseres lineært i en kjerne, og henvender seg til både landside og flyside



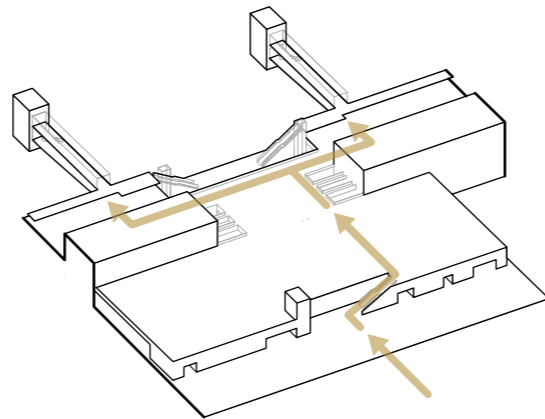
Funksjonene organiseres lineært i en kjerne, og henvender seg til både landside og flyside



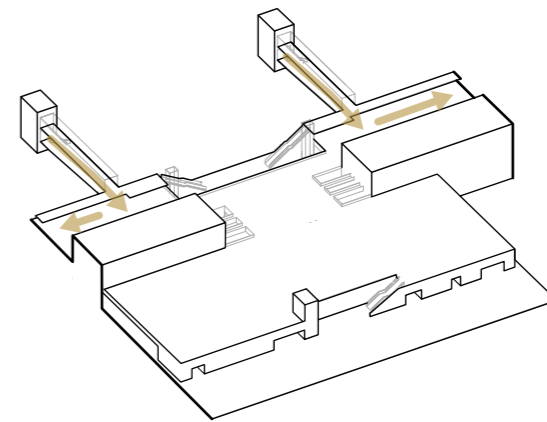
Fleksible gater for utenlands som stenges av etter behov



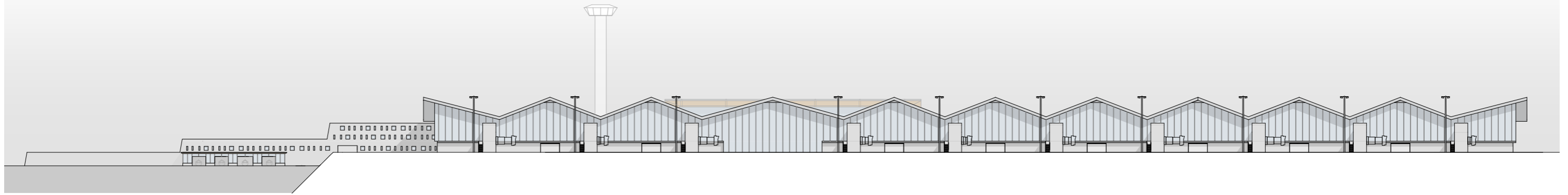
Ankomst



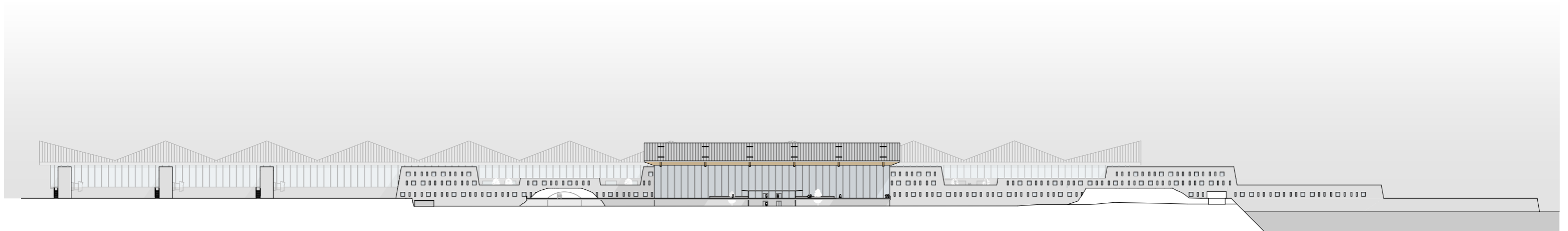
Afgang



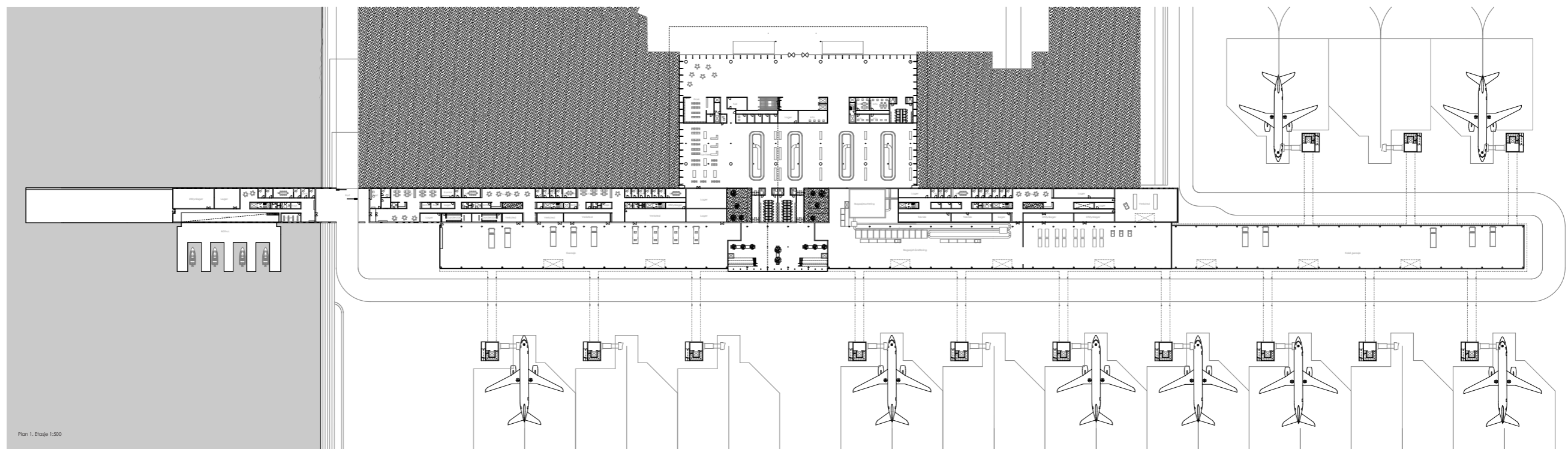
Transitt



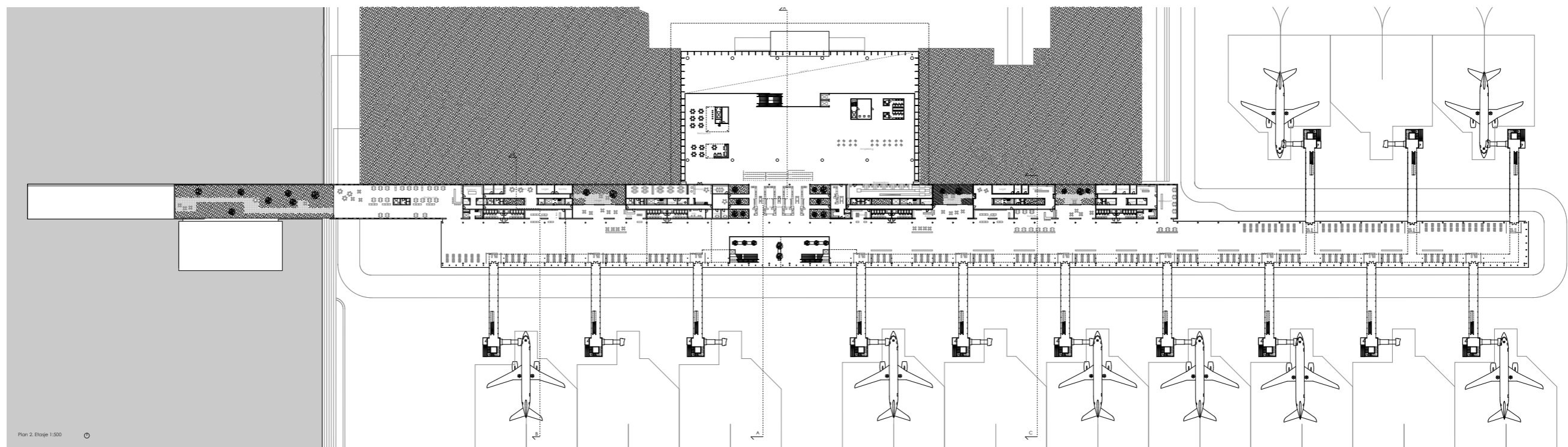
Fasade Nord



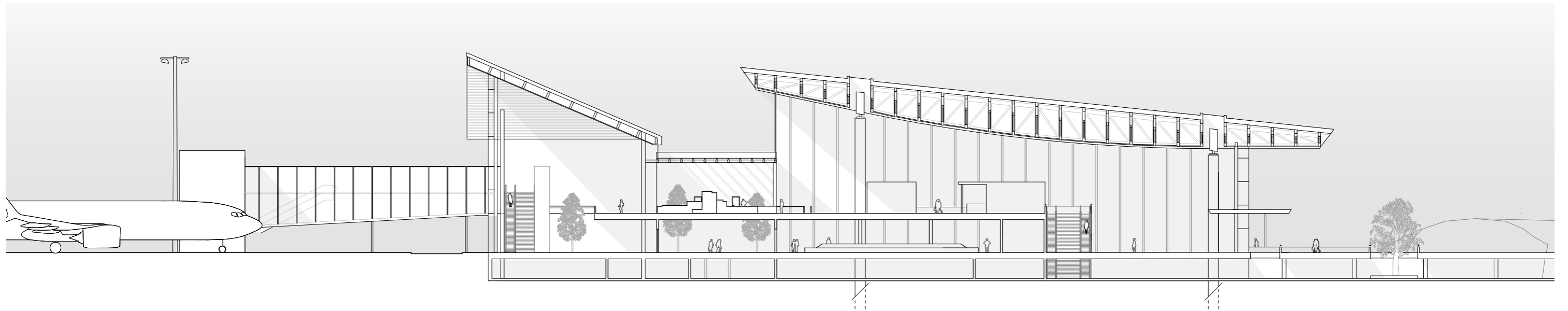
Fasade Sør



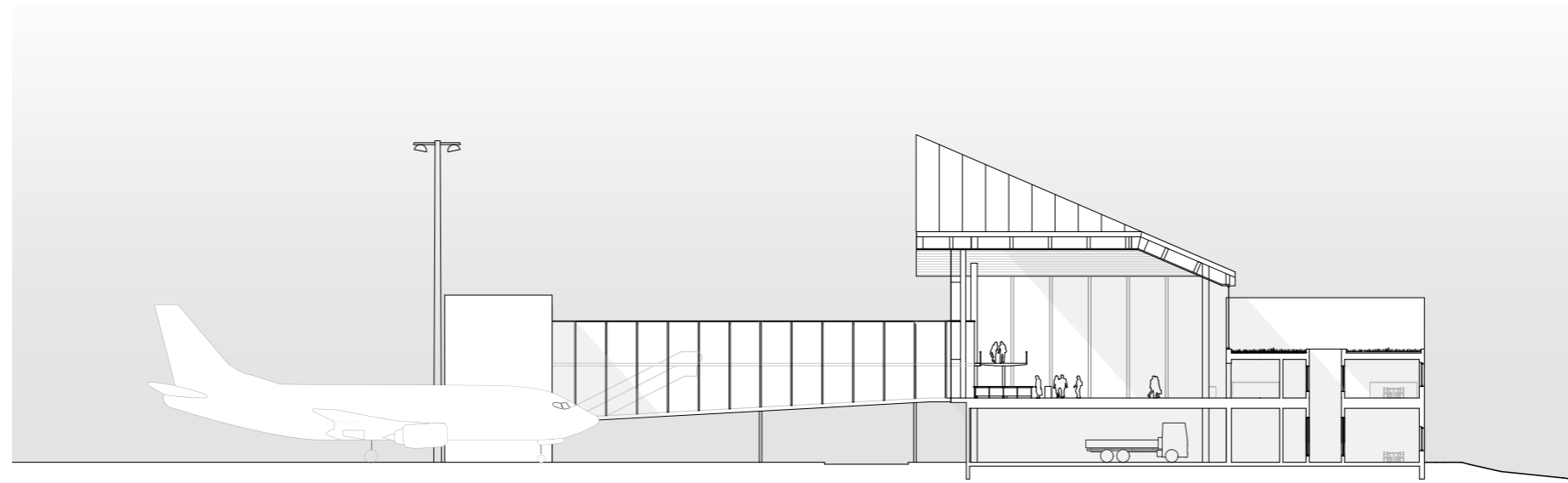
Plan 2. Etasje



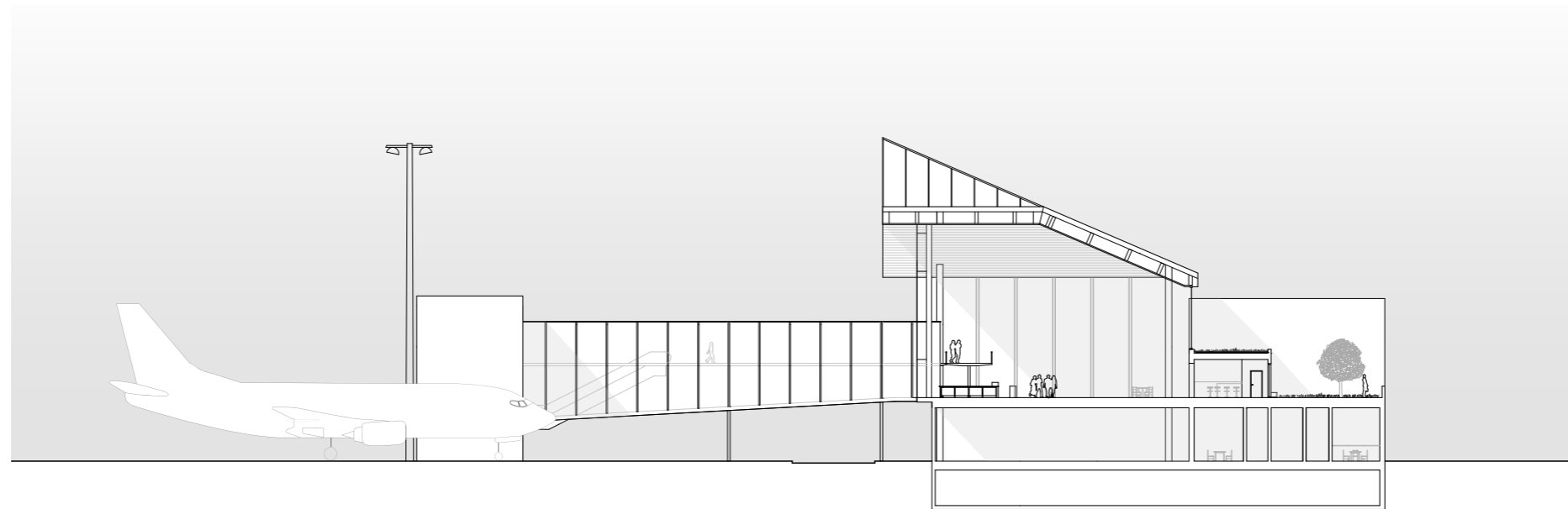
Plan 1. Etasje



Snitt A-A



Snitt C-C 1:200



Snitt B-B 1:200

