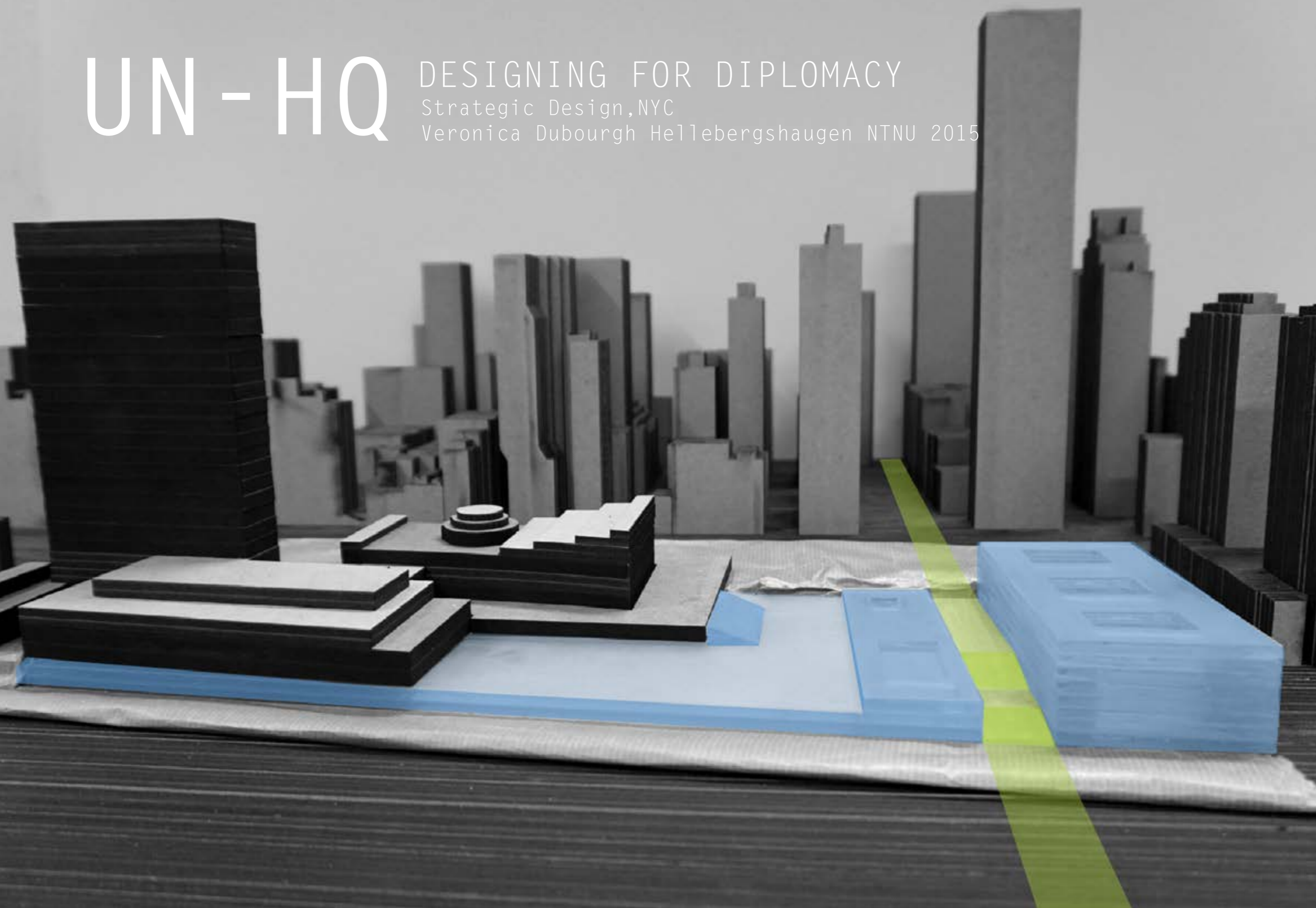


UN - HQ

DESIGNING FOR DIPLOMACY

Strategic Design, NYC

Veronica Dubourgh Hellebergshaugen NTNU 2015



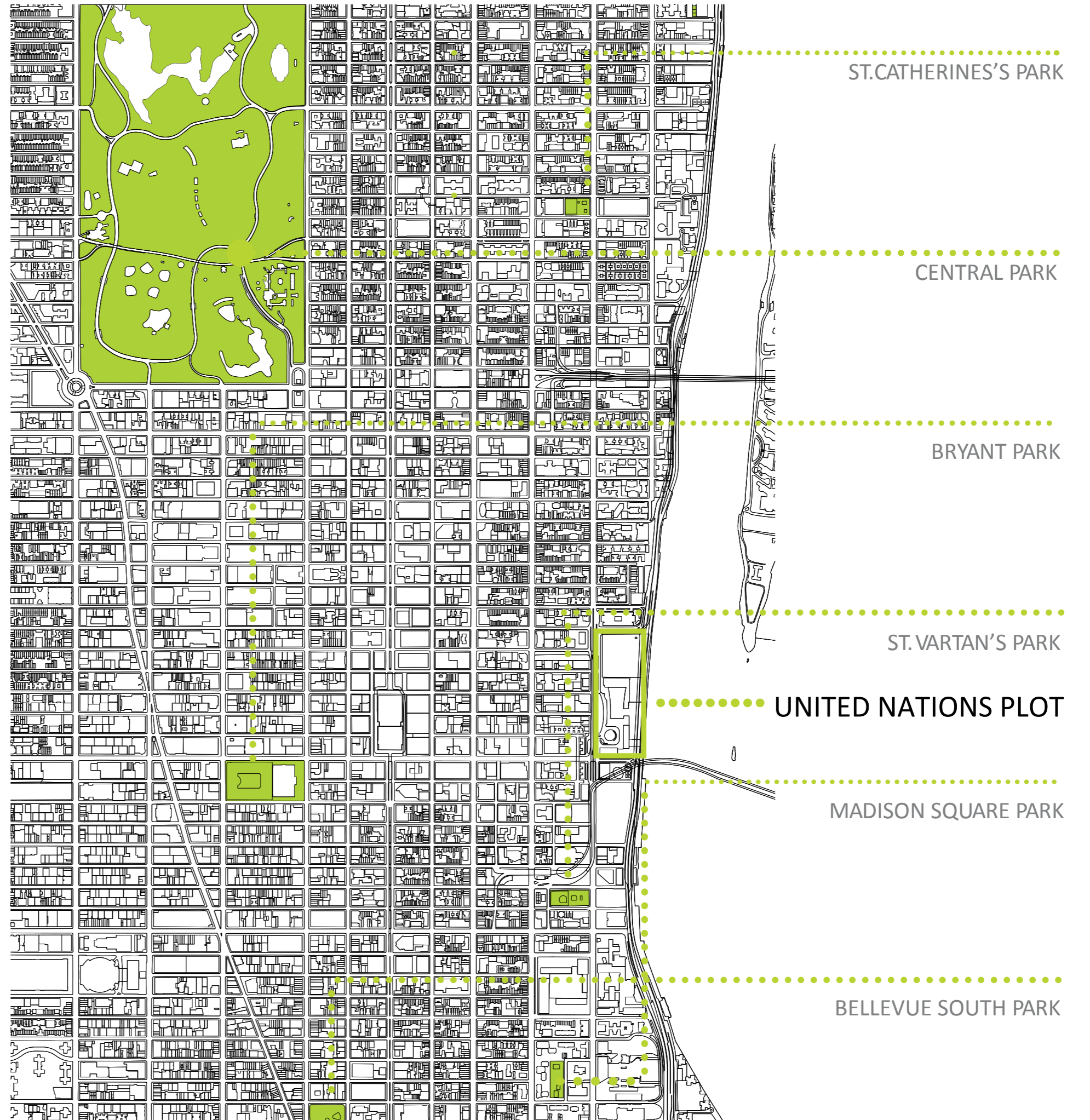
The frame of the project is the development of an additional structure within the compound of the United Nations HQ's in NYC. The background for the project relates to the organisations need for more space. Studies have been made based on the original design and a possibility design has been proposed by SOM Architects. This project challenges the opportunity for the new design and re-organizes the current flow of the compound. The current UN structure struggles with it's internal organization. The new project aims to create a design opening up the organization to the public and it's surroundings and at the same time adapting the space to a more user friendly flow. Bringing the whole plot together within itself and in relations to the city and it's inhabitants.

-Veronica Dubourgh Hellebergshaugen

The Background

The United Nations is an international organization located by the East River on Manhattan in NYC. It was founded after the Second World War replacing the League of Nations. The UN was created to provide a platform for dialogue between all the sovereign nations of the world. Since its foundation the organization has expanded from 51 original members to 193 today. Walter Harrison, the planning director of the UN stated: "We are not simply building a symbol for peace, but a workshop for peace." This symbol of peace has been affected by the change of context. The original masterplan has been restricted due to threats of terrorism. The once open lawn of the campus is currently surrounded by fences, surveillance cameras and police. In addition several structures will be closed down responding to a 50 m Blast stand off relating to the danger of car bombs.

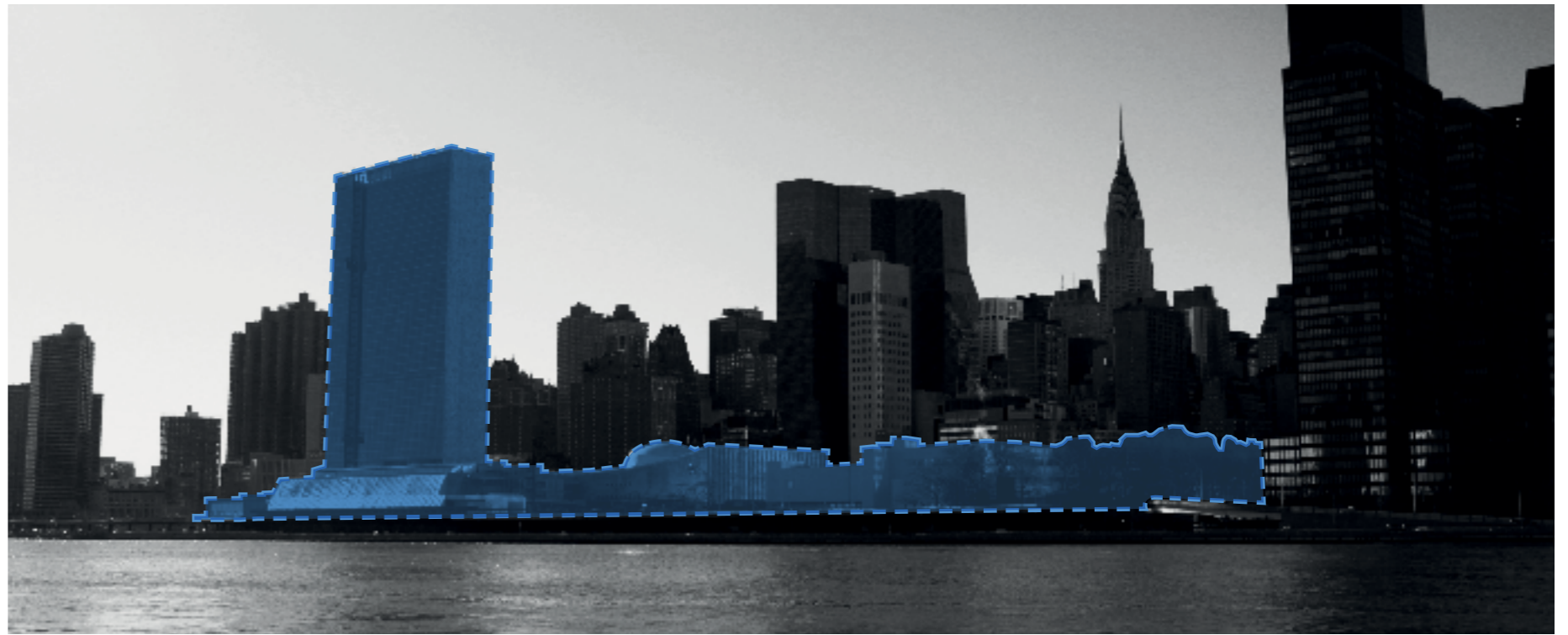
This project proposes a new layout for the site. The main focus of the new structure is re-organizing the internal connections in addition to creating an openness to the public. Even though the whole complex has recently been refurbished it's struggling with the flow within the compound, especially while receiving visitors to various conferences and events. The establishment receives around one million visitors a year. The proposed project addresses these issues by interlacing a new structure with the old, re-organizing the movement through the compound. The new complex will contain an extensive visitor center portraying the work of the organization. This area will have no security requirements.



Relations

The plot has a strong facade facing the East River . In addition it's surrounded by icon structures like Tudor City, The Chrysler Building and the massive Trump Tower.

The right illustrations shows the plot viewed from Roosevelt Island and the second illustration names other iconic buildings situated on the same cross streets of 42nd and 47st street.



PLOT FROM EAST RIVER



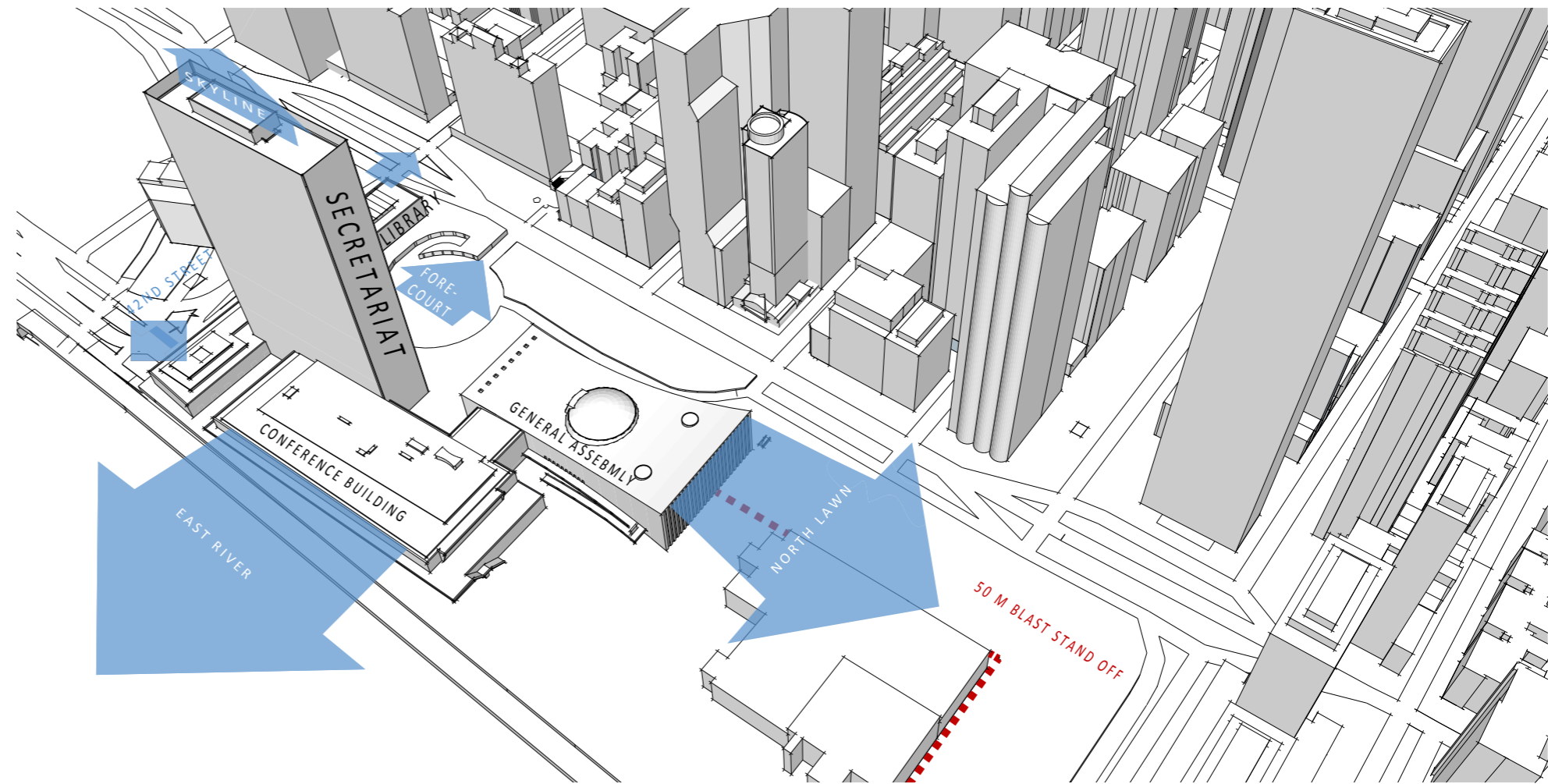
47ST STREET RELATIONS & PROPERTY LINE

The Plot

The current plot is constructed as a platform overseeing the East River. There are four main partitions in the structure, the General Assembly, the Conference Building, the Secretariat and the Library. These were all constructed in the same building stage. The current North Lawn structure was established as a temporary office space when they were refurbishing the compound.

The plot is passed by First Avenue on the west side and the FDR underneath the structure towards the east. The FDR is scheduled to be moved as a part of Manhattans Waterfront Development. A submerged tunnel will be created in front of the site with a green walkway and bikepath above. Manhattans development plan "A Greener Greater New York" states that in the future you will never have to walk more than 10 minutes to reach a public park on Manhattan. The project will answer to this plan and establish parts of the park as a fully public venue.

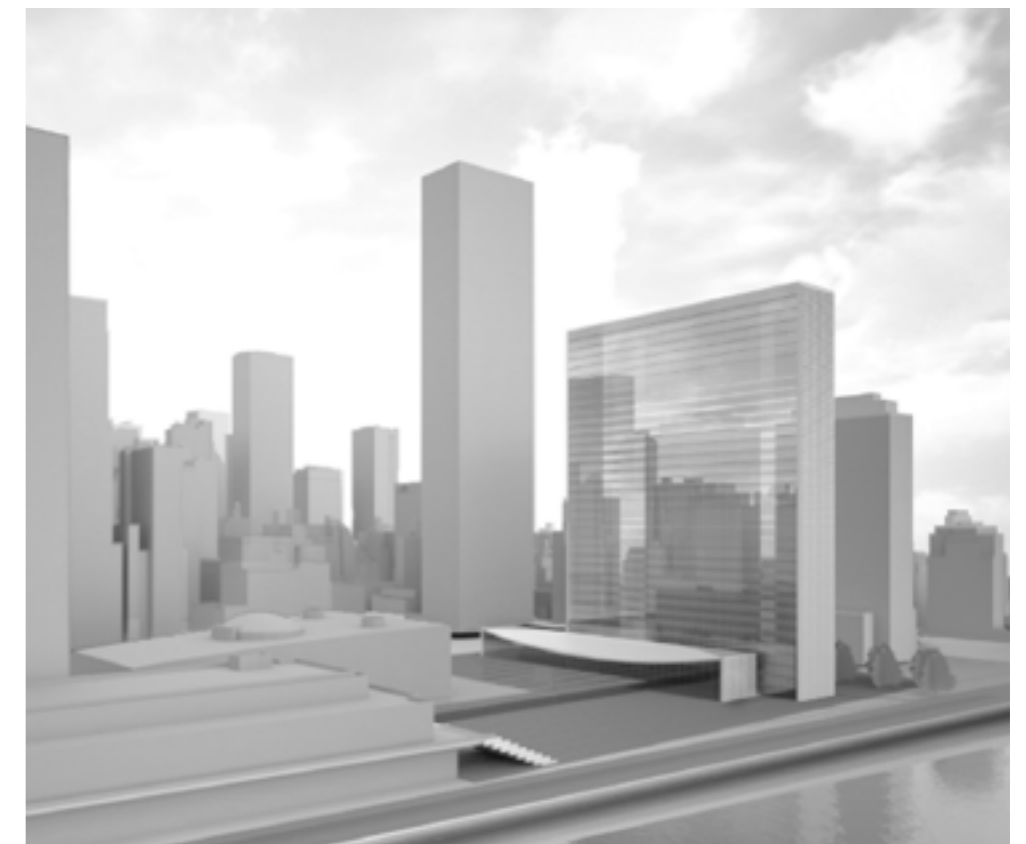
The location of the compound is currently surrounded by a large traffic flow. There are nearly daily demonstrations related to different events at the UN and in lack of a large space connecting directly to the compound, the Dag Hammarskjold Plaza is usually used as a point of gathering for larger demonstrations.



PLOT SITUATION



HISTORICAL MODEL
ORIGINAL DESIGN



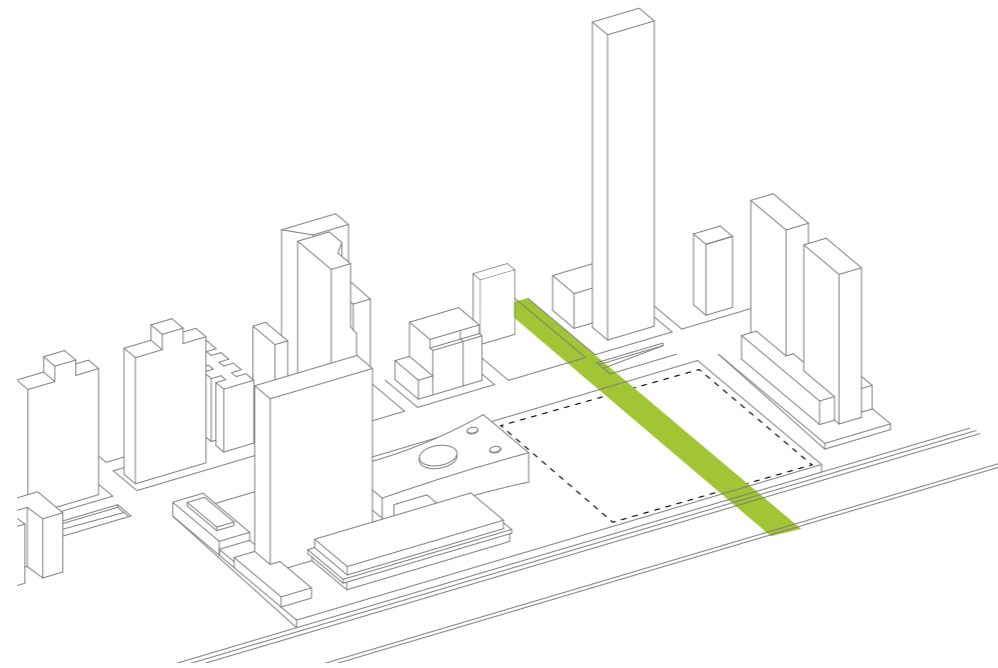
OPPORTUNITY STUDIES
SOM ARCHITECTS NYC

The Principles

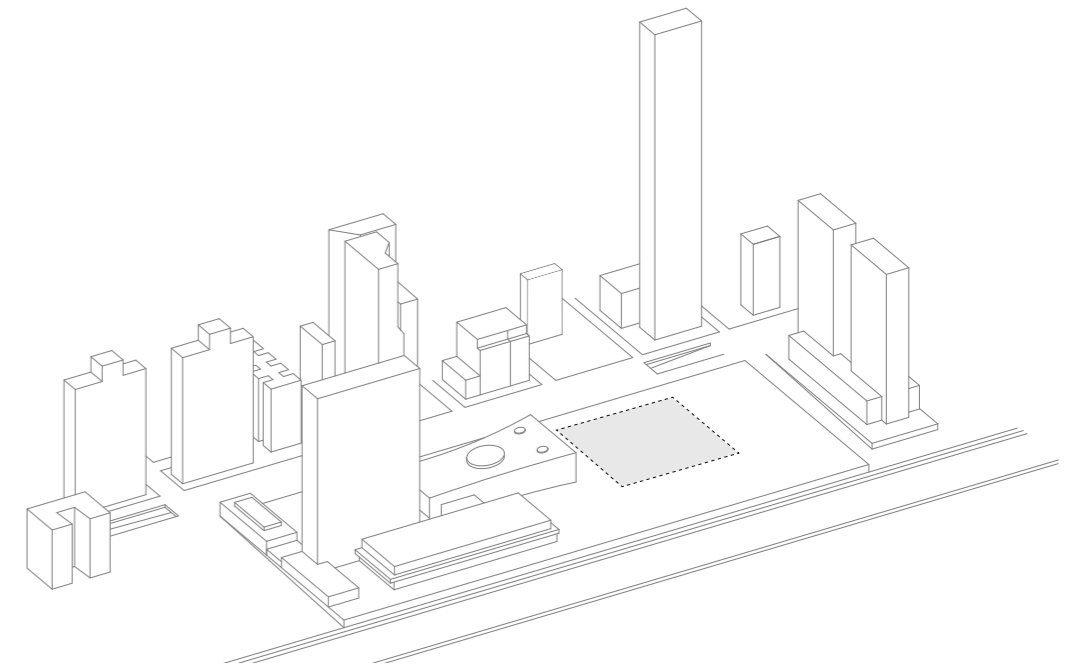
The main entrance for the original compound is raised on a platform 4 meters above the First Avenue street level. This platform is the current main entrance of the compound. Taking the visitor into the lobby of the General Assembly (see UN photobook).

The original design was basically a combination of the proposals from Oscar Niemeyer and Le Corbusier. It intended an expansion of the compound to consist of a slab tower creating a plaza between the two structures. In addition a ramp and staircase connected the different levels. Another important factor was to preserve a clear view path from 47st street to the East River. SOM Architects in New York conducted a possibility study for the UN regarding a new structure on the North Lawn. Their proposal more or less followed the main principles from the original design. One of their alterations relates to the Blast stand off, thereby moving the new construction closer to the current compound than originally planned.

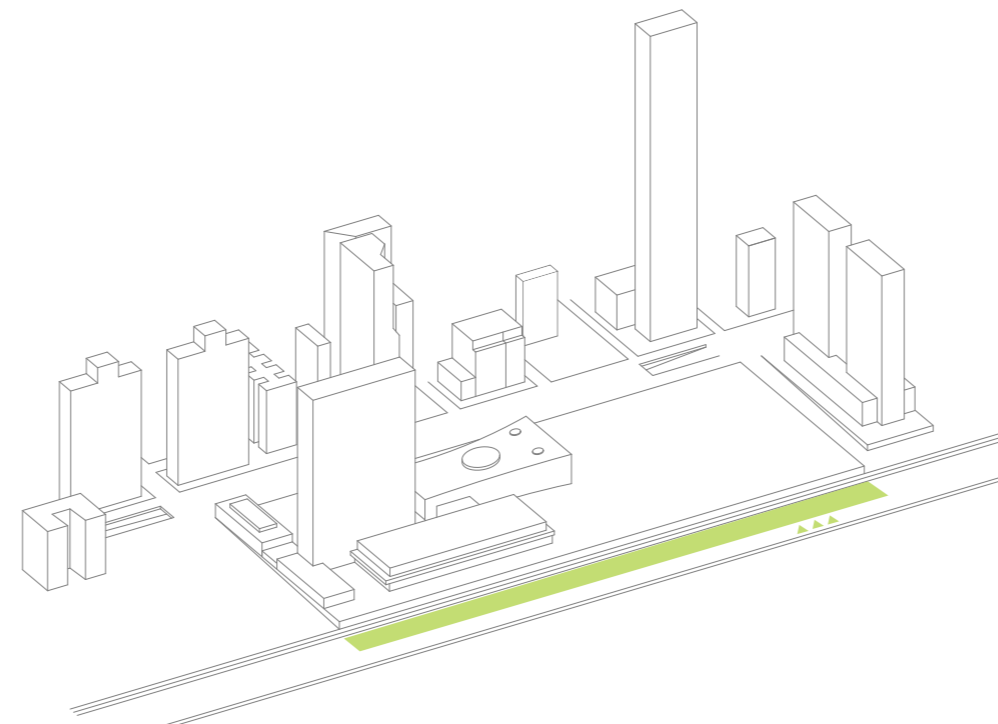
Based on these facts four main principles were created as design conditions for the new construction. First and foremost to continue the 47st street path through the property creating a public space and direct connection to the East River. Second to create and preserve a plaza between the new and old structure. Third to work with the Manhattan Waterfront Plan in emphasizing a green pathway in front of the compound and fourth to re-use the old FDR highway.



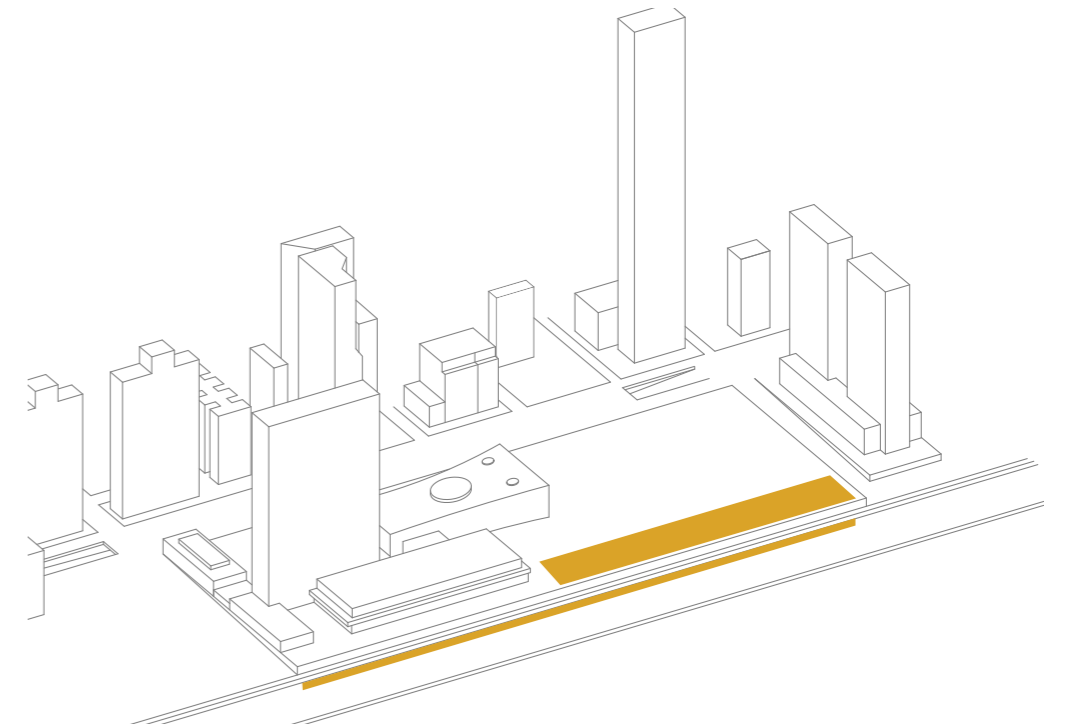
47ST STREET AXIS THROUGH THE PLOT



CREATING UN PLAZA



CREATING A GREEN WATERFRONT PATH



RE-USING THE OLD FDR SPACE

Strategy

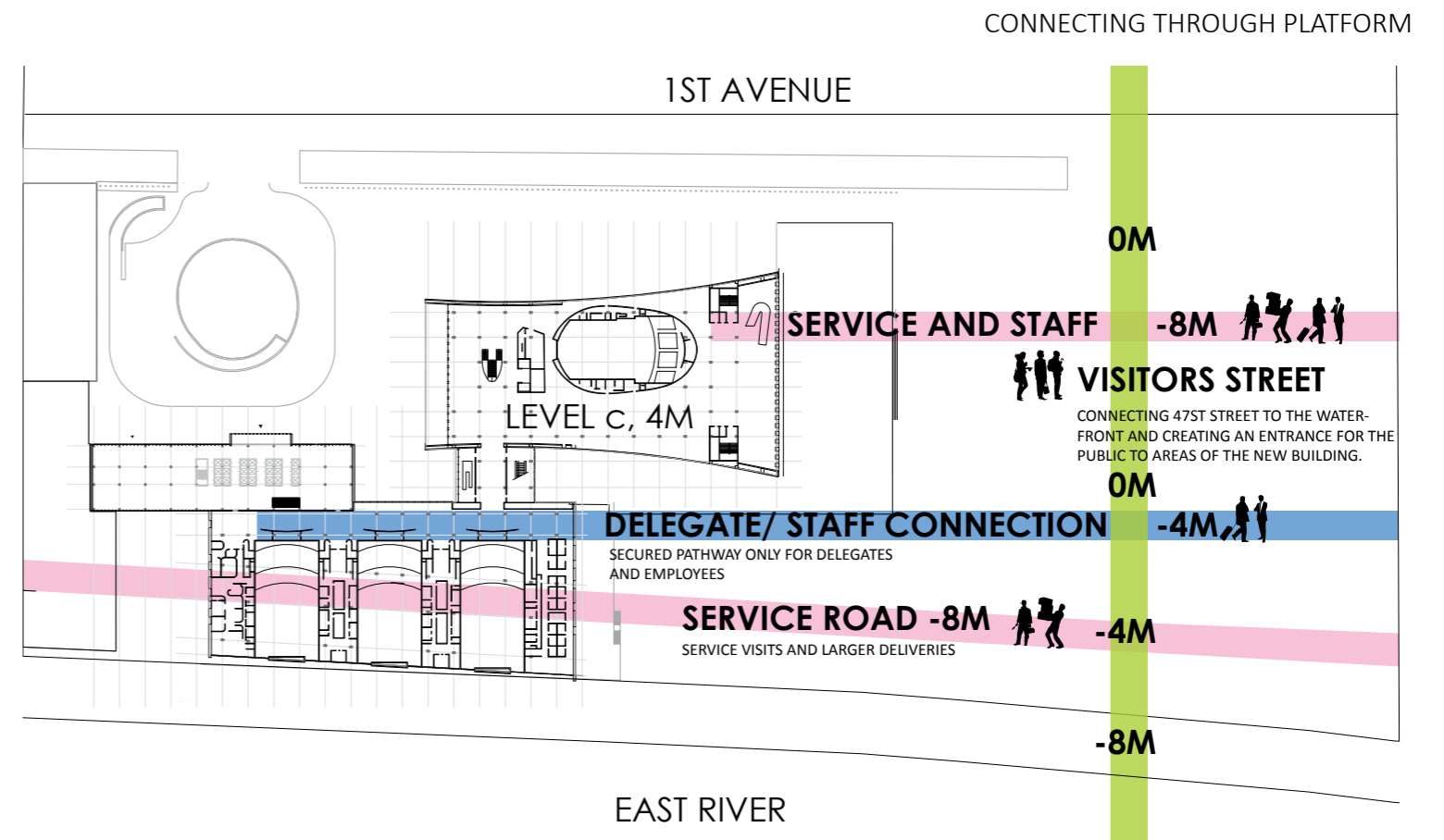
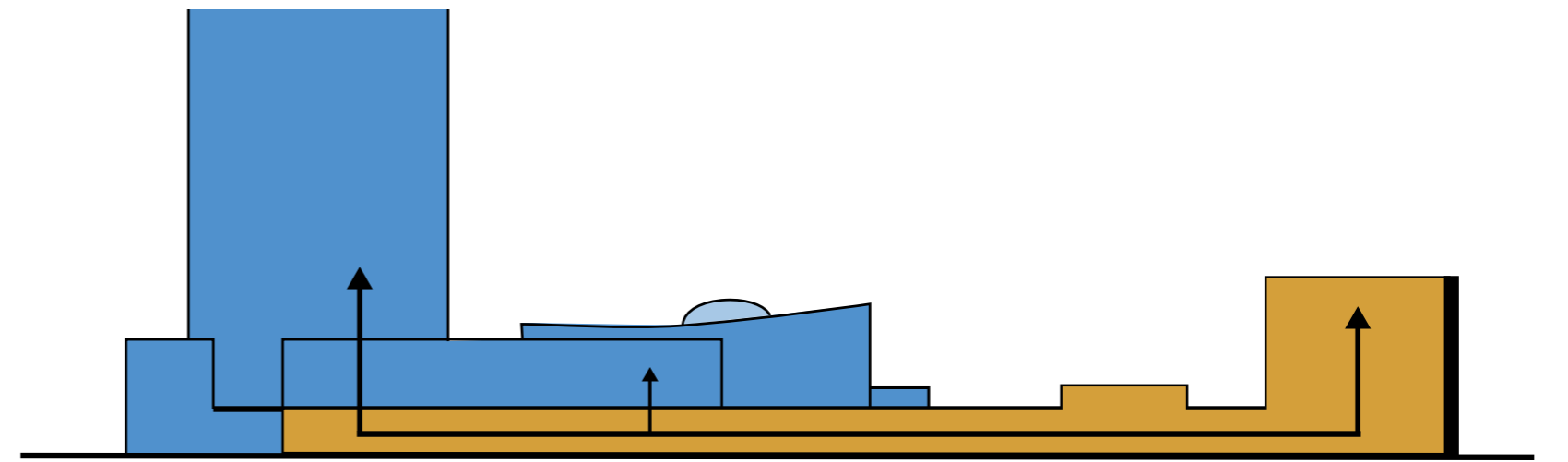
The current UN structure has two subterrain floors at -8 and -4 meters. The planned Waterfront Walkway will be situated at the -8 meter level facing the East River. There's a service road crossing level -8 parallel with the FDR. This service road is preserved in the restructuring.

Relating to the 47th street axis a decision was made to break through the blast stand off and build beyond the 50 meter limit, this decision affects the north facing wall of the new structure. Pushing it all the way out to the road it will require a blast zone design. Literally speaking the wall structure will be acquired to be a solid construction for the first 30 meters vertically, preferably in concrete. (ref. blast design in the process book).

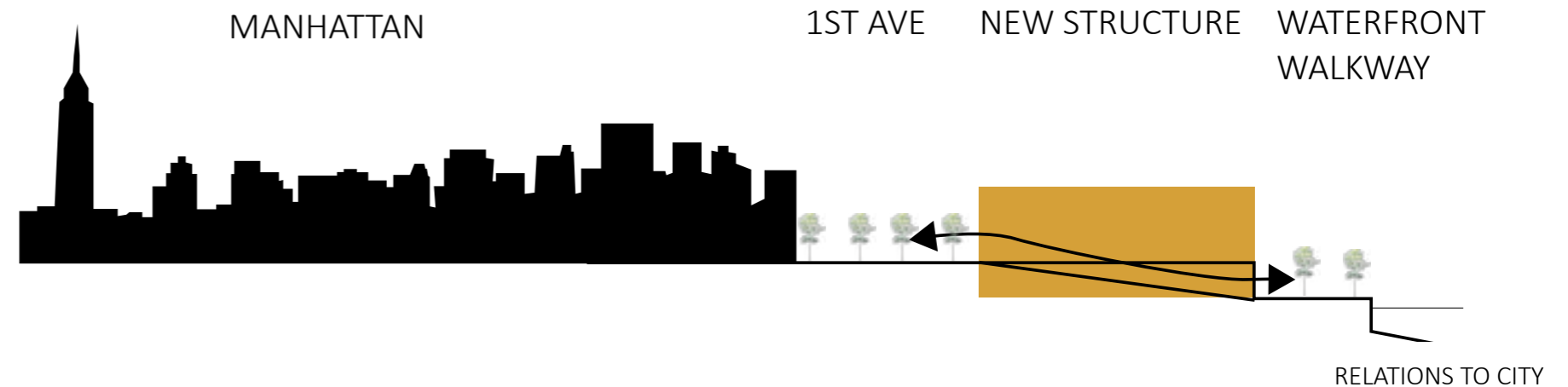
The new structure relates to the level of the UN garden preserving as much as possible only moving one floor above in the part of the structure relating to the General Assembly entrance. The north part of the project is situated past the 47th street axis and stretches to five levels above First Avenue. Thus corresponding with the height of the current conference building. This in order to incorporate the need for office space.

Program

Office spaces	50 000 SQM
Entrance	2400 SQM
Visitor area/Exhibition space	5000 SQM
Lobby/Auditorium	2000 SQM
Library/ Resources	4000 SQM
Language Training	2000 SQM
Conference Rooms	4600 SQM
Cafeteria	2400 SQM
IT/ building Support	2400 SQM
Mechanical Electrical Plumbing	5000 SQM
Total building	80 000 SQM



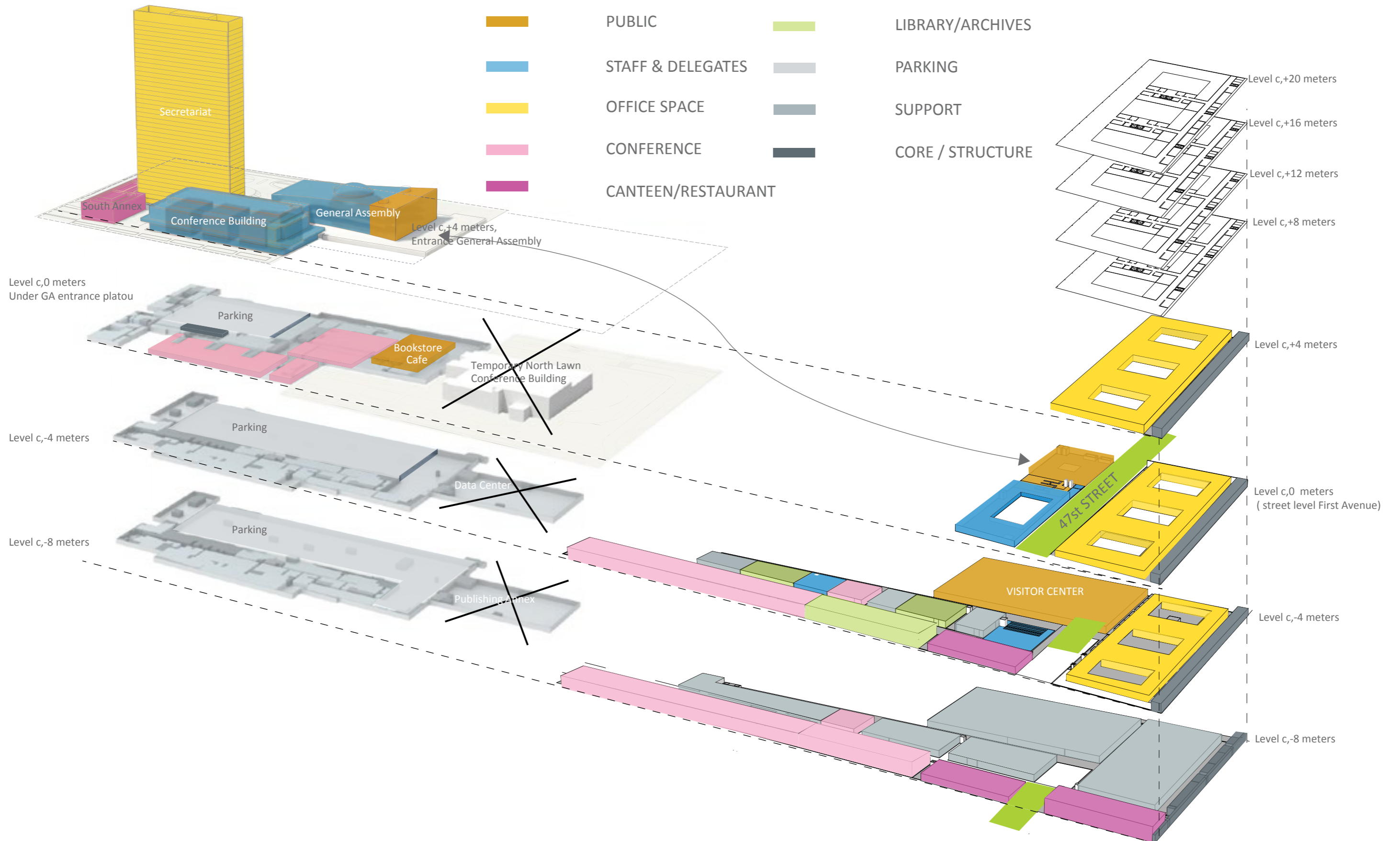
PATHWAYS



LEVEL CONNECTION ORIGINAL STRUCTURE/NEW STRUCTURE

CURRENT UN COMPOUND

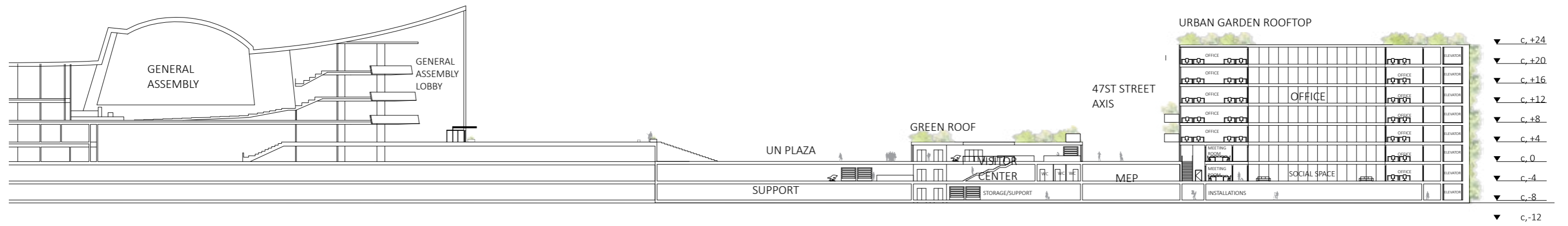
NEW NORTH LAWN BUILDING



THE PLOT

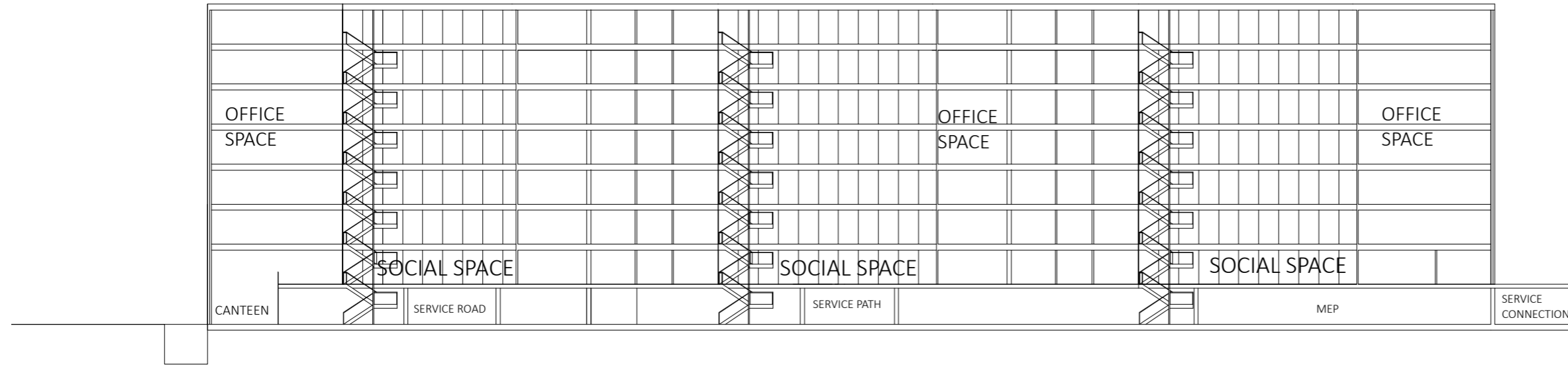


Main section through plot

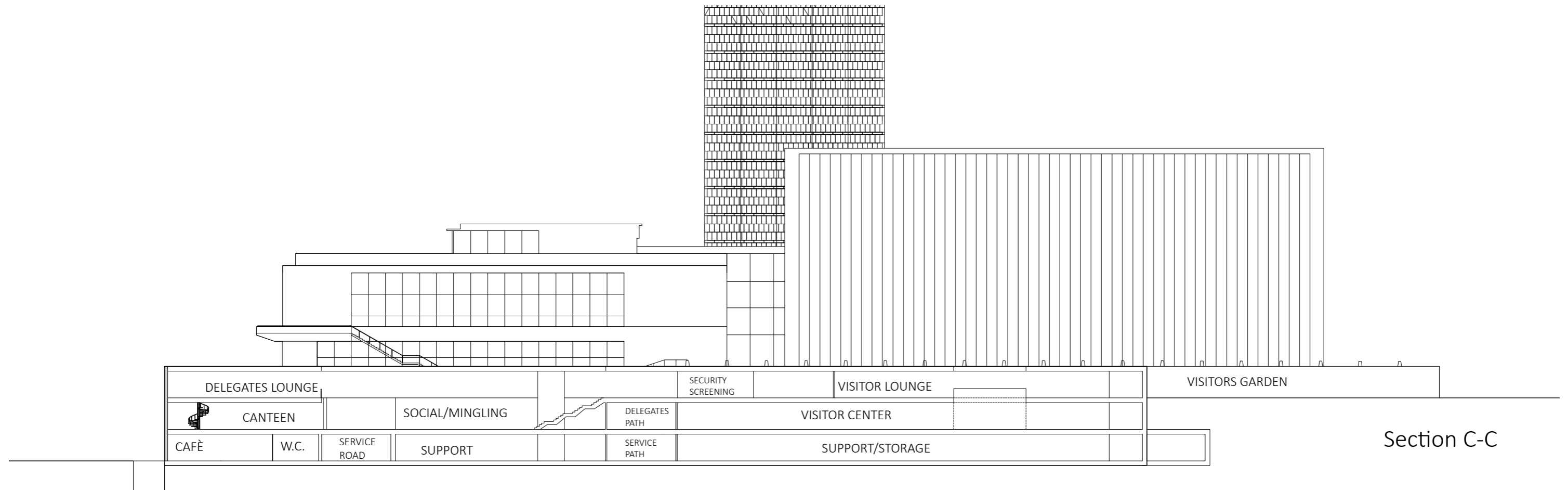


Section A-A

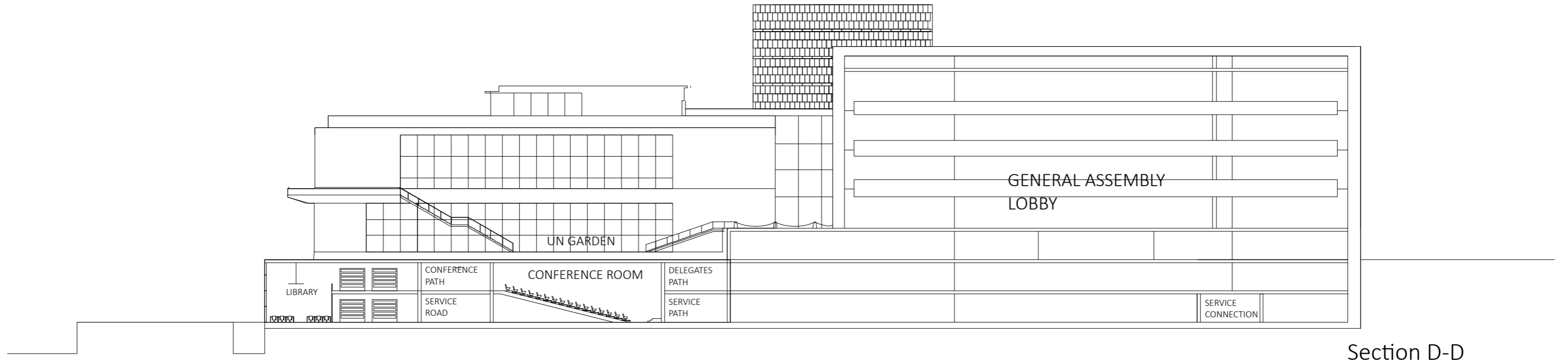
Sections B-B, C-C



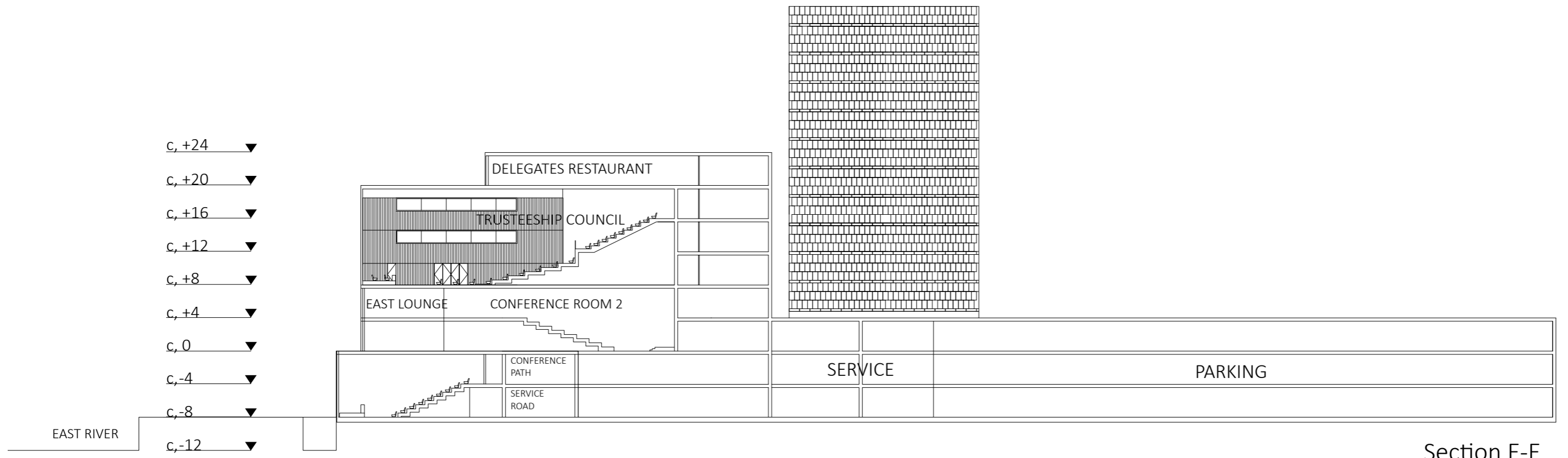
Section B-B



Section C-C



Section D-D

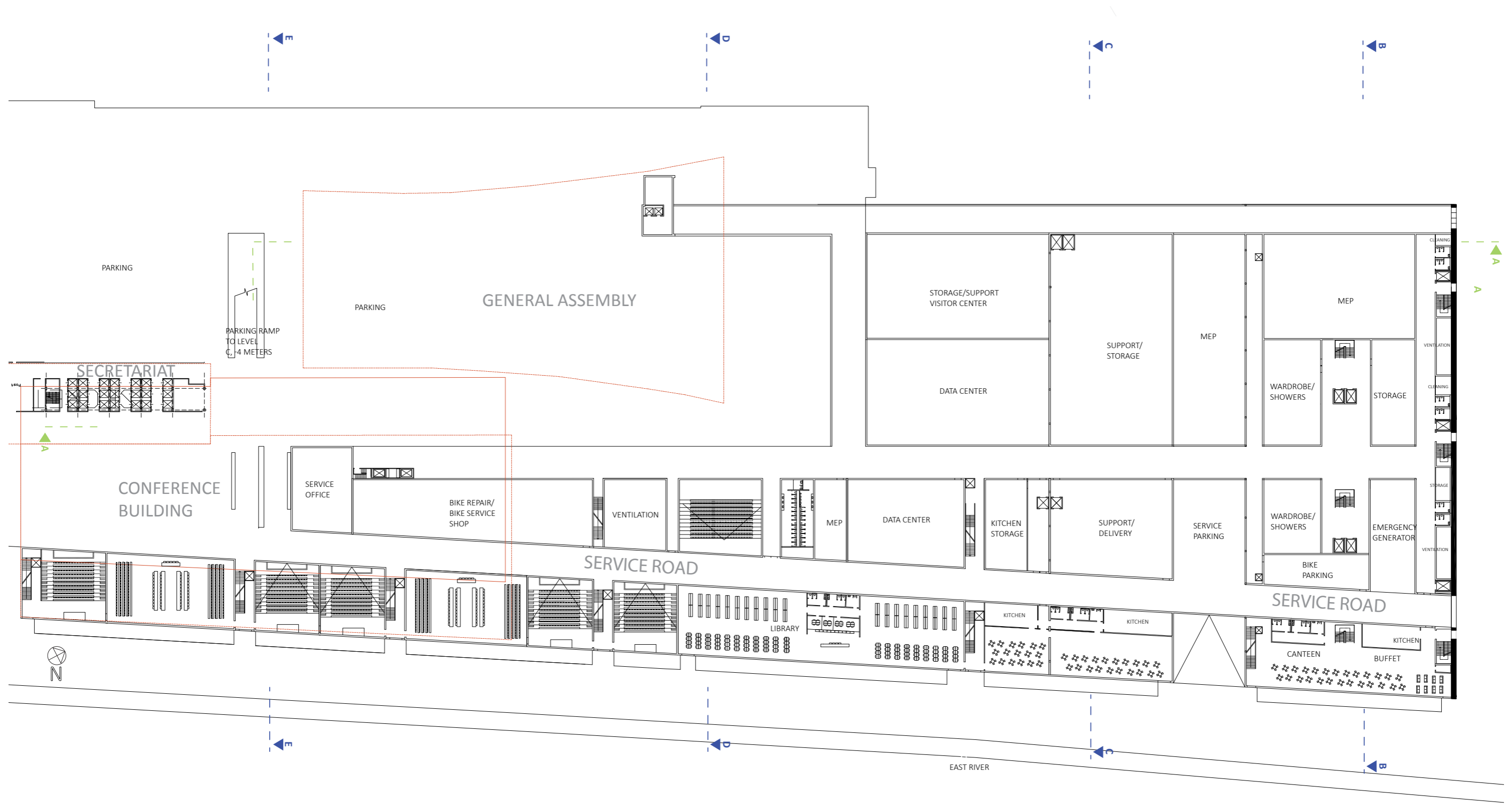


Section E-E

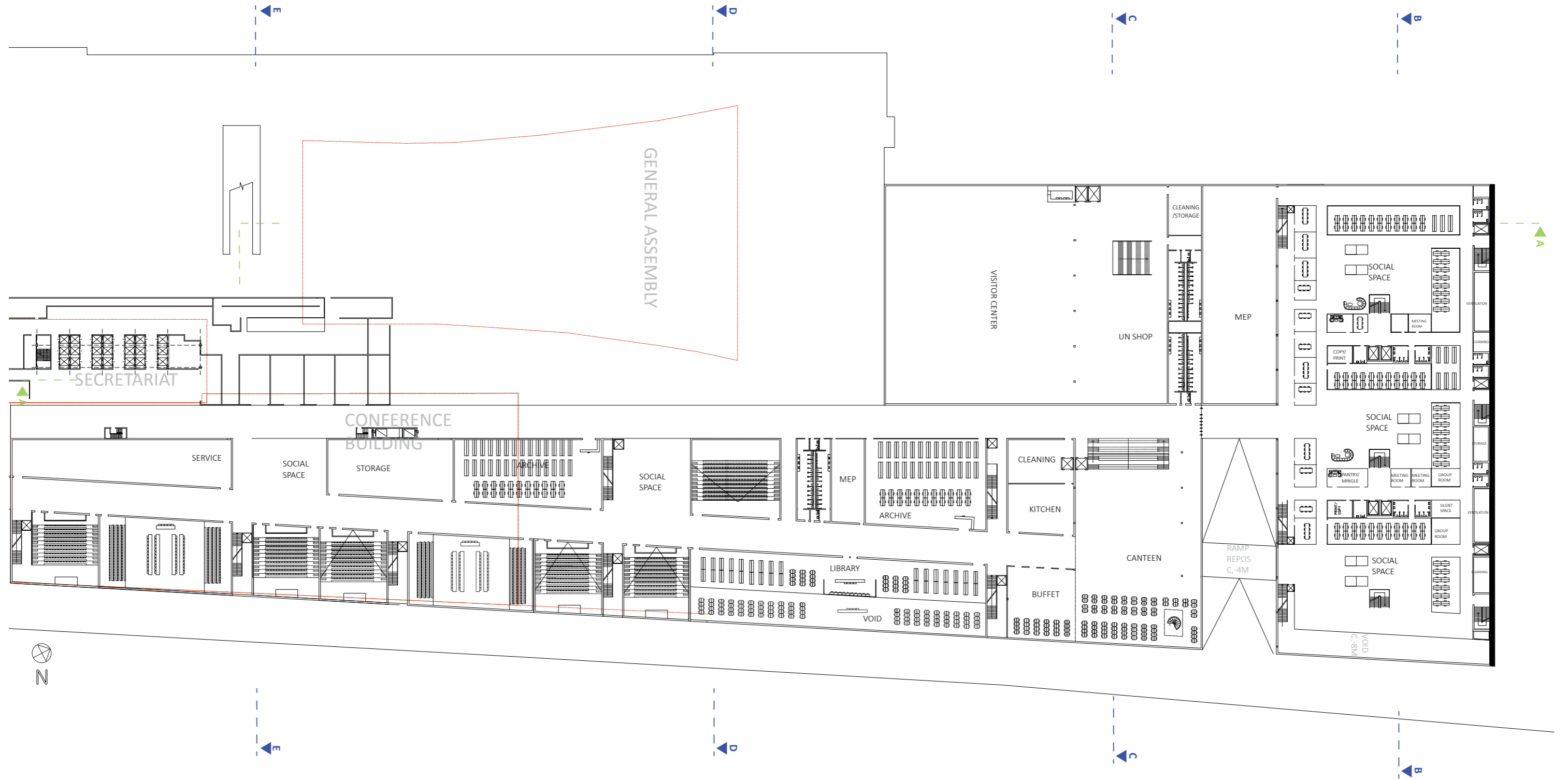
Aerial view new structure context



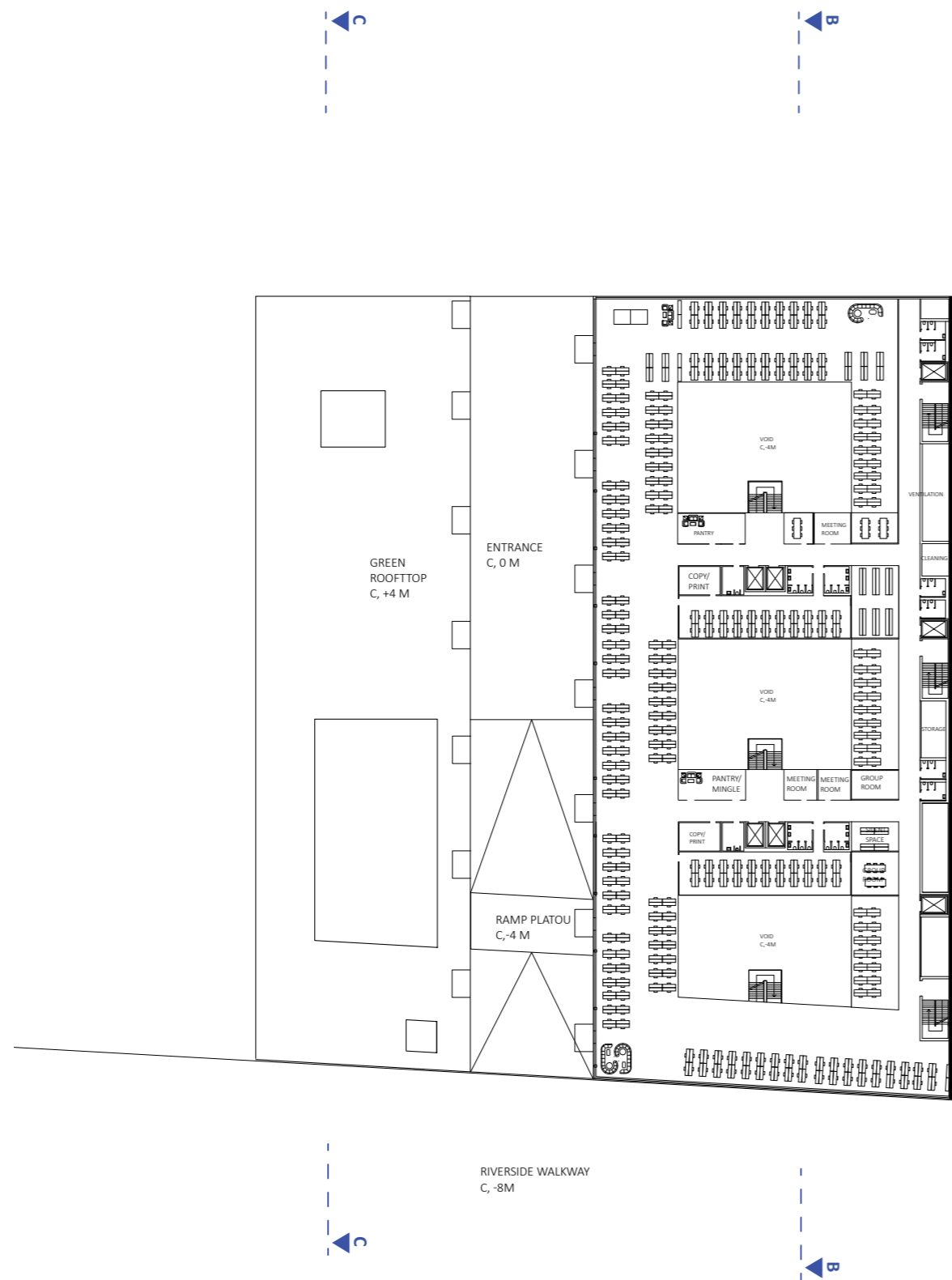
Floorplan c, -8m



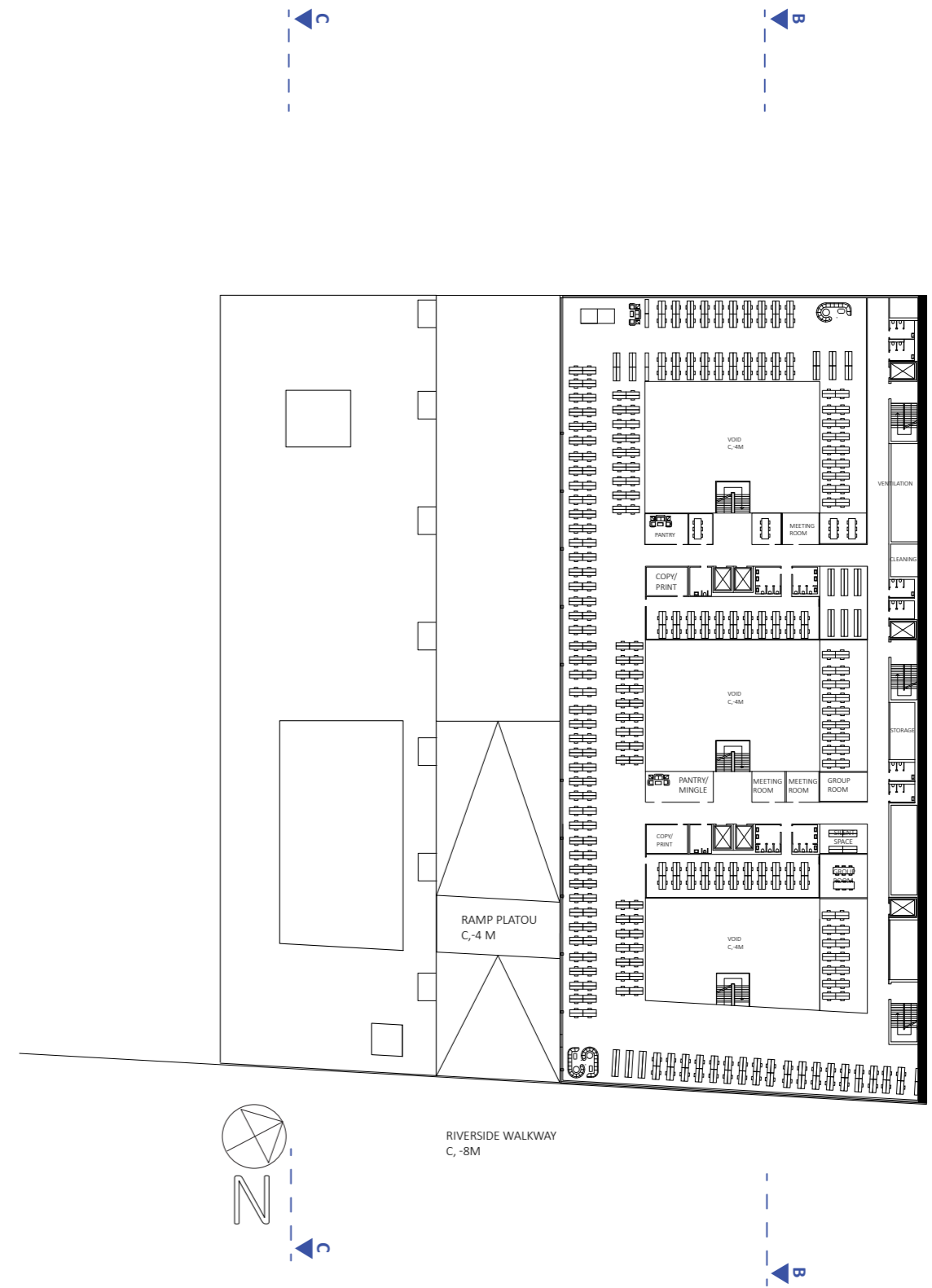
Floorplan c, -4m



Floorplan c,+4m-c,+24



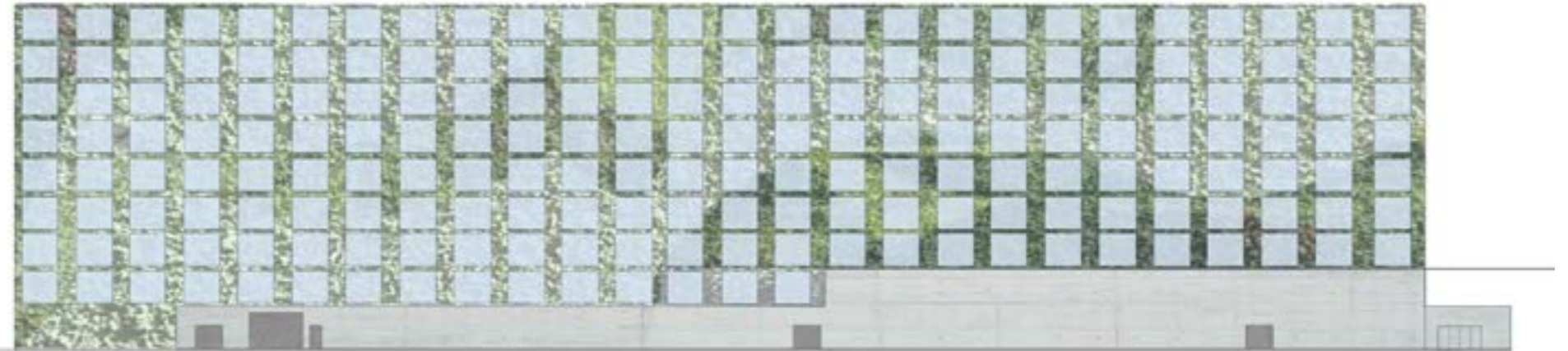
Plan +4-+8M



Plan +12-+24M

Facade North

The North side facade consists is a completely closed wall. The walls visible space is divided into 200 squares each square will be given to a member state. There's a couple of extra squares for additional states joining the organisation, offcourse there might also be states that are combined. The wall is designed with prefab modules that will keep the slates non load bearing, this is to keep the option open that the road in front might be removed in the future and the bomb zone will no longer be an issue.



The utopian idea behind the wall is that in the future there will be no threat and it can be opened up and the concrete slates will be replaced by windows.

Future utopian open facade

The green wall squares are numbered and each nation will draw a random number (this is derived from the tradition of drawing the seats in the general assembly each year making the positions completely random). The idea for the green wall is that the nations will work together (maybe hire Patrick Blanc) and create a green wall mural.

1	2	3	4	5	6	7	8	9	10	11	12	13	14	15	16	17	18	19	20	21	22	23	24	25	26
27	28	29	30	31	32	33	34	35	36	37	38	39	40	41	42	43	44	45	46	47	48	49	50	51	52
53	54	55	56	57	58	59	60	61	62	63	64	65	66	67	68	69	70	71	72	73	74	75	76	77	78
79	80	81	82	83	84	85	86	87	88	89	90	91	92	93	94	95	96	97	98	99	100	101	102	103	104
105	106	107	108	109	110	111	112	113	114	115	116	117	118	119	120	121	122	123	124	125	126	127	128	129	130
131	132	133	134	135	136	137	138	139	140	141	142	143	144	145	146	147	148	149	150	151	152	153	154	155	156
157	158	159	160	161	162	163	164	165	166	167	168	169	170	171	172	173	174	175	176	177	178	179	180	181	182
183	184	185	186	187	188	189	190	191	192	193	194	195	196	197											
198	199	200																							

Or they will not and the squares will be divided expressions marked out in the facade.

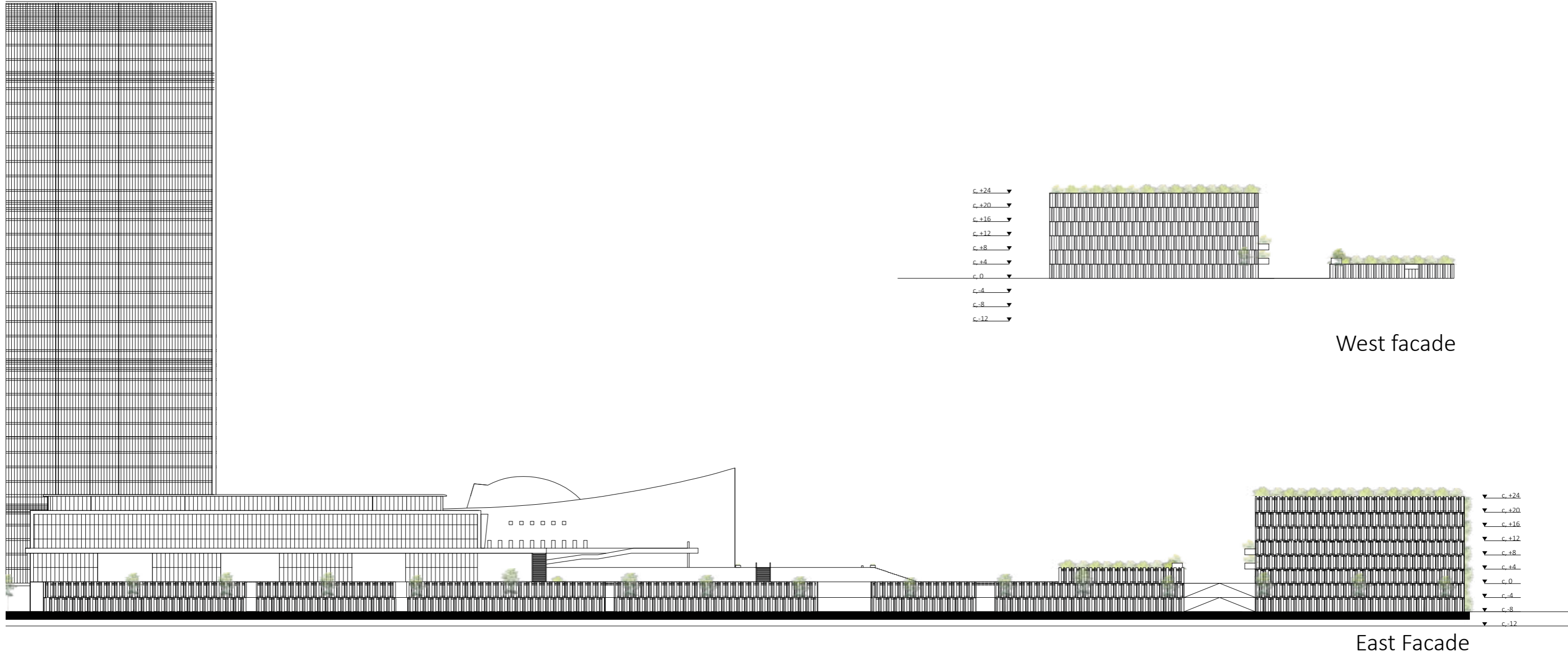
Division

- c, +24 ▼
- c, +20 ▼
- c, +16 ▼
- c, +12 ▼
- c, +8 ▼
- c, +4 ▼
- c, 0 ▼
- c, -4 ▼
- c, -8 ▼
- c, -12 ▼



Green facade opportunity if working together

Facade East & West



Perspective from East River



Perspective from first Avenue



View from visitor center towards General Assembly

