

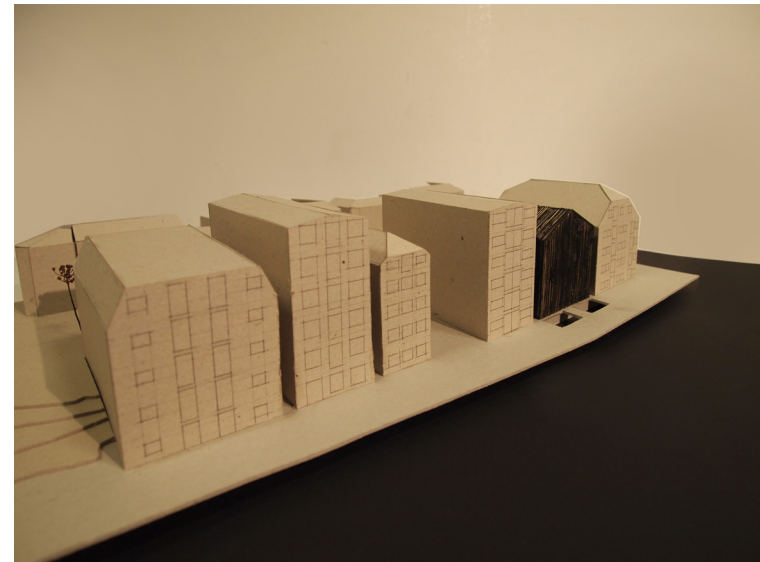
Modellbilder

Udruing

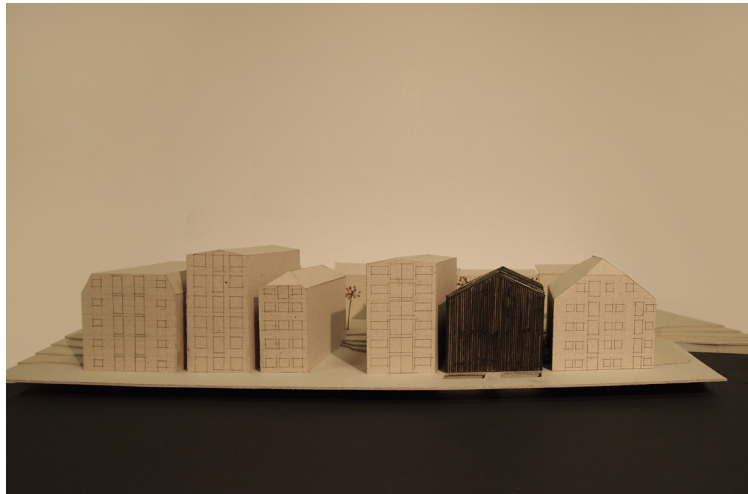
Masteroppgave i arkitektur vår 2014
Amanda Jahr Kirkeby og Celine Maria Lund



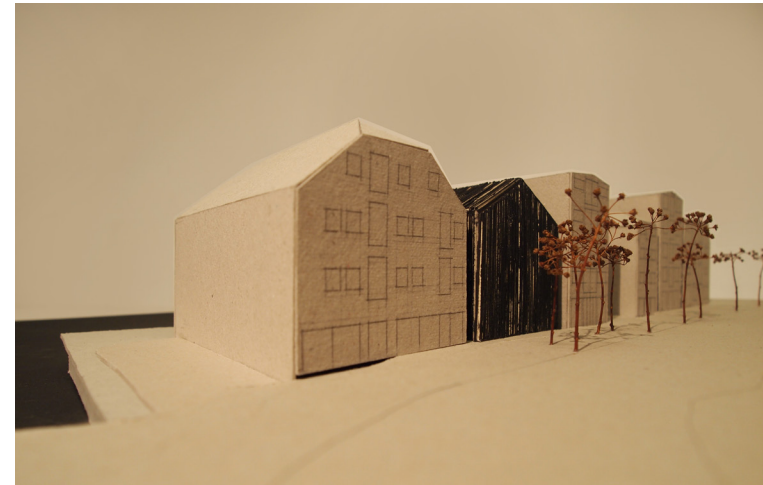
Oversiktsbilde av situasjonen



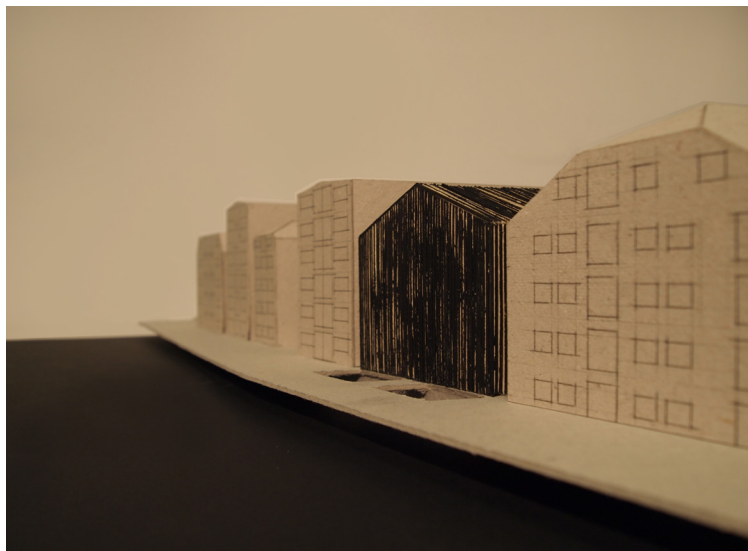
Undring i bryggerekken mot sjøen



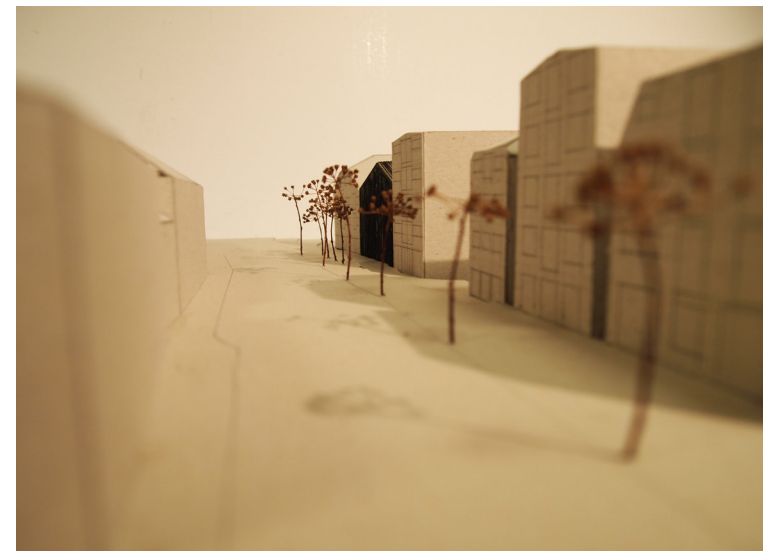
Undring i bryggerekken mot sjøen



Modellbilde ved ankomst fra vest i Fjordgata.



Undring i bryggerekken mot sjøen



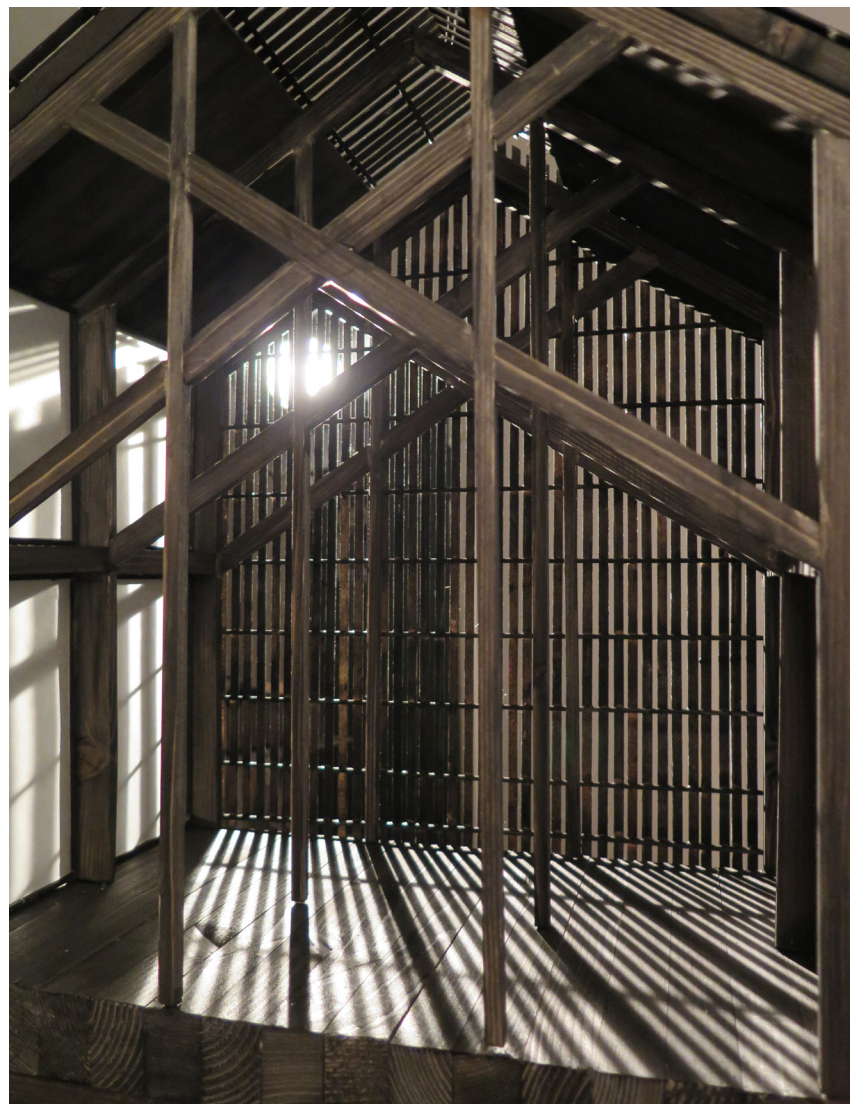
Modellbilde ved ankomst fra øst i Fjordgata.



Snittet gjennom bygget viser helheten mellom nivåene



Lyset siles gjennom fasaden



Morgensol i trekronens rom over bakken



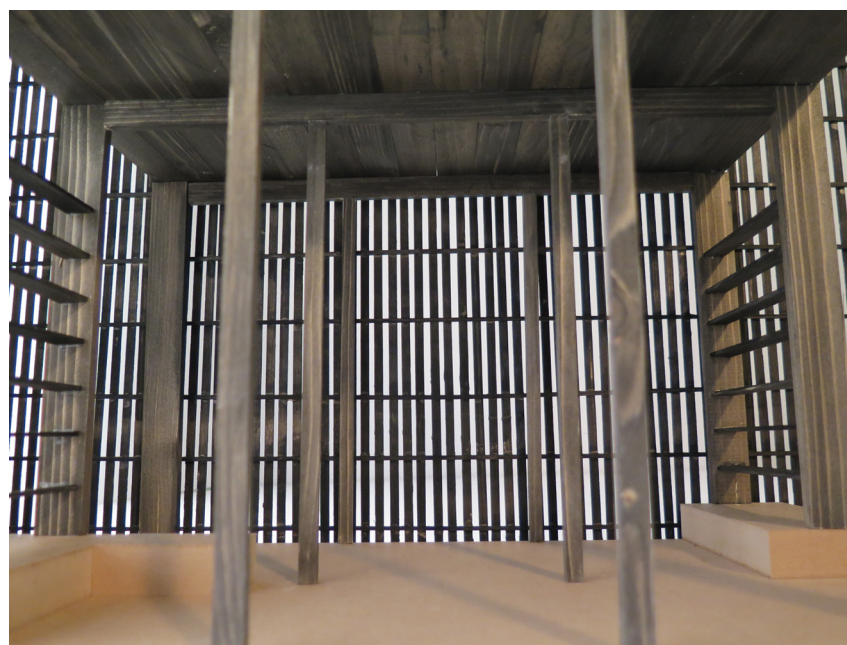
Lys og skyggespill i trekronens rom over bakken



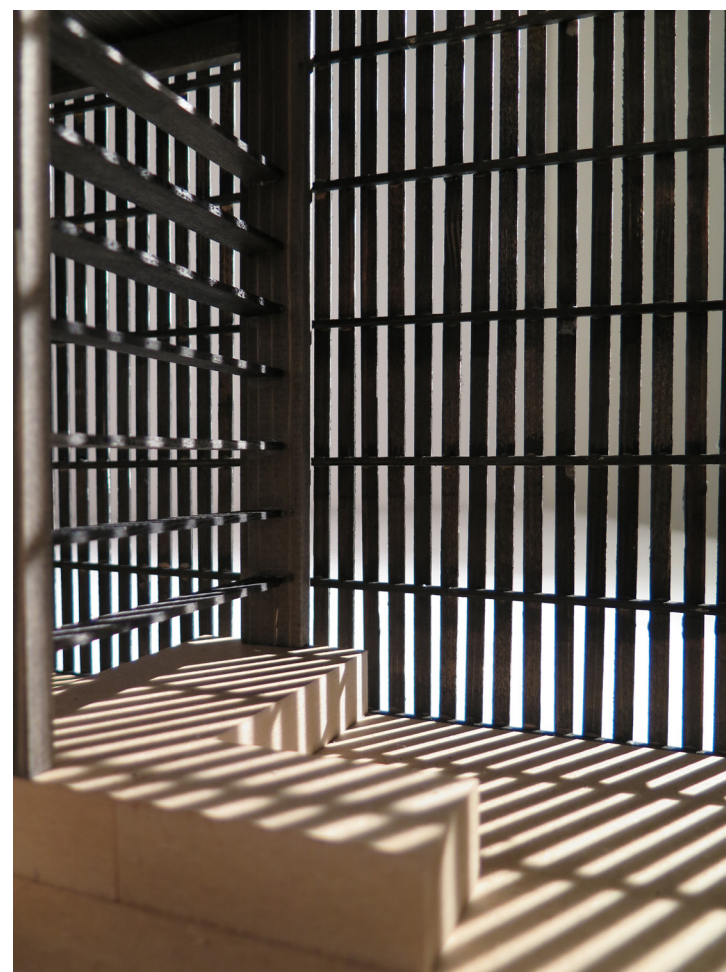
Trekronens rom



Lyset siles gjennom takvindu og fasade i trekronens rom



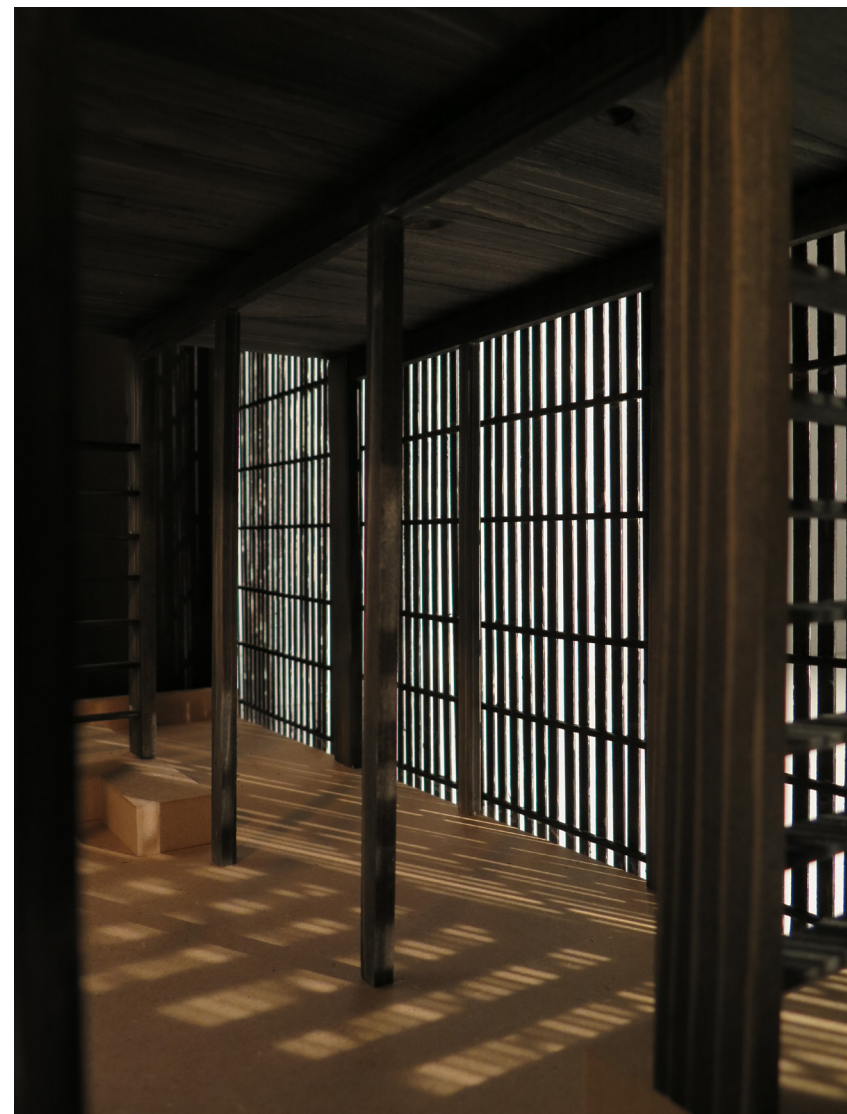
Jordens rom



Lyset siles inn på sittegruppe i jordens rom



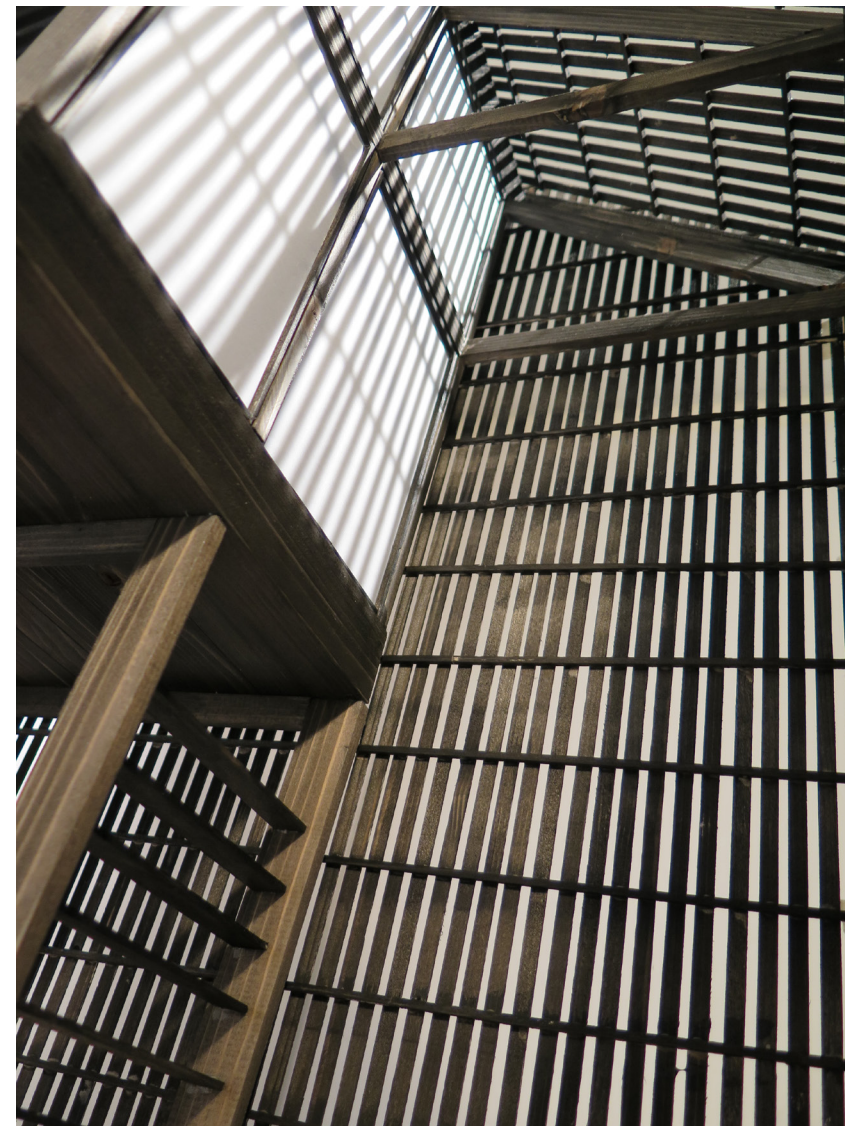
Jordens rom



Jordens rom



De dobbelthøye rommene på siden



De dobbelthøye rommene på siden



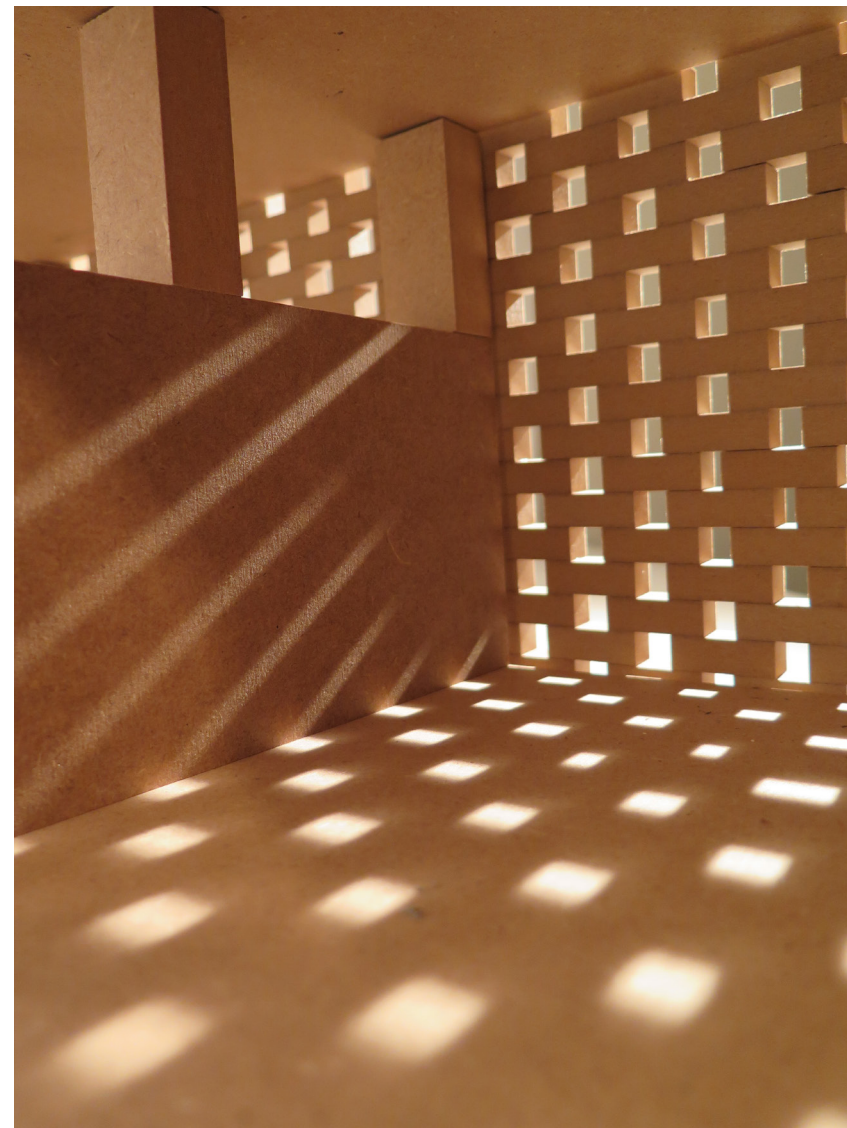
Vannets rom



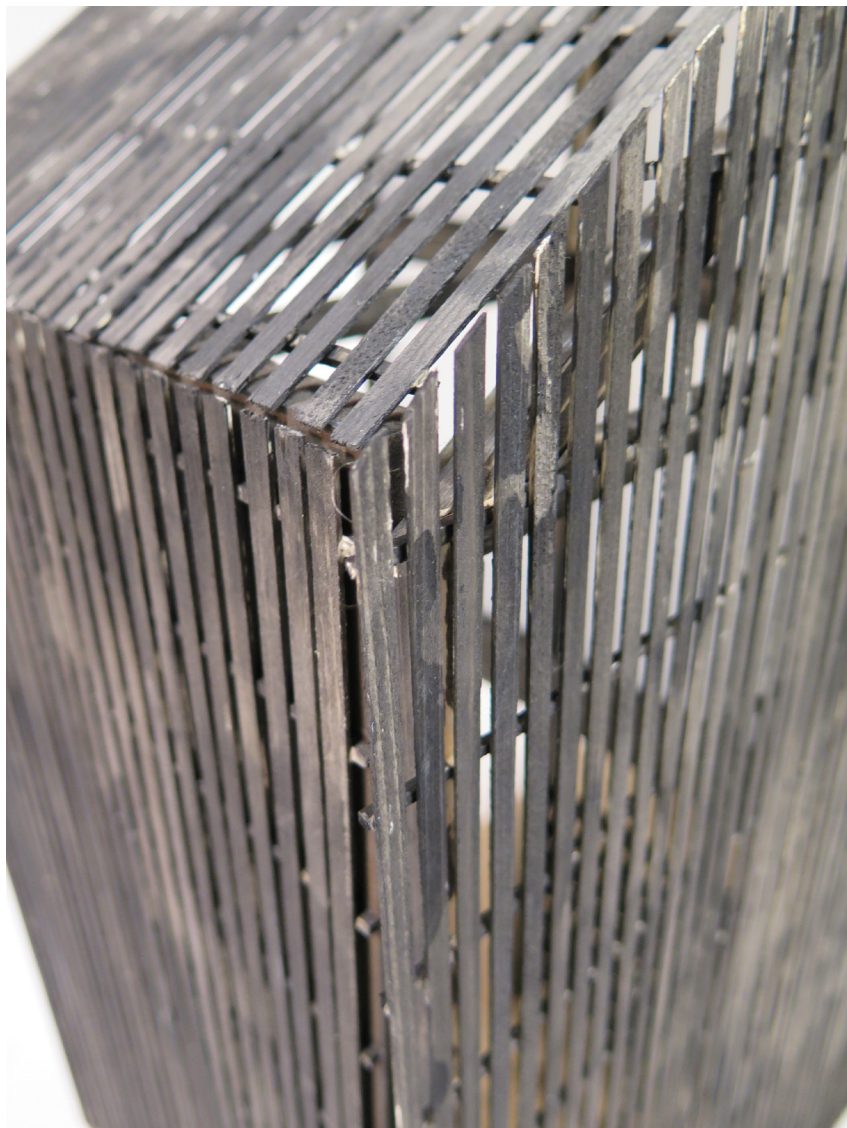
Vannets rom



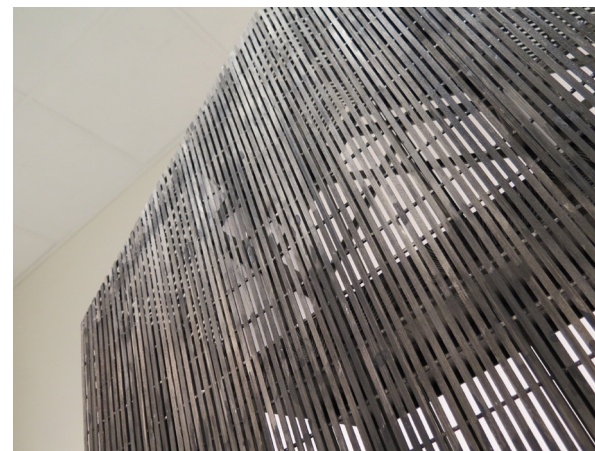
Vannets rom



Vannets rom



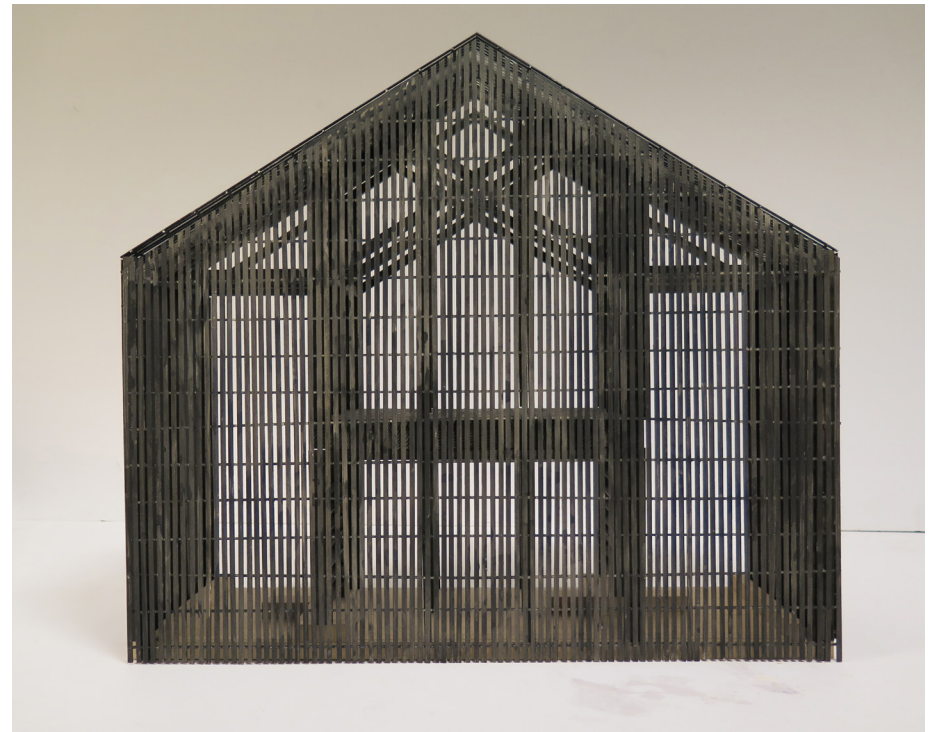
Møte mellom tak og fasade vegger



Bilder av fasaden sett fra gaten



Fasade mot mot vannet



Fasade mot Fjordgata