

P R O S E S S

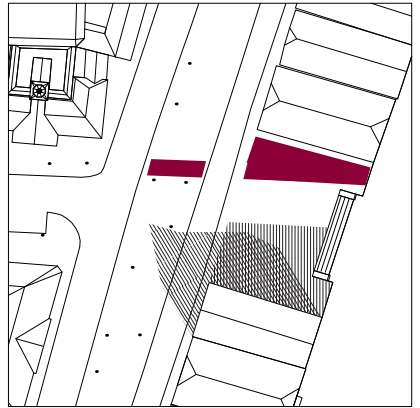
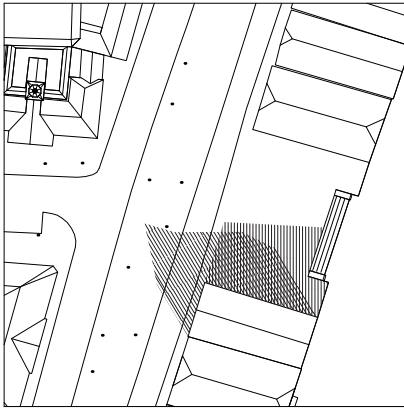
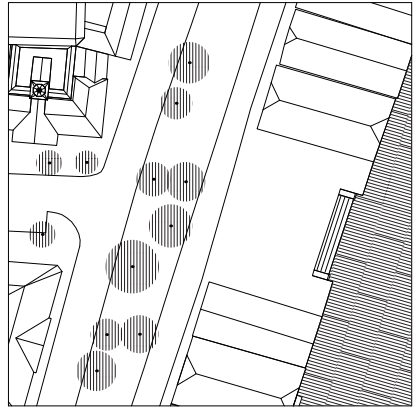
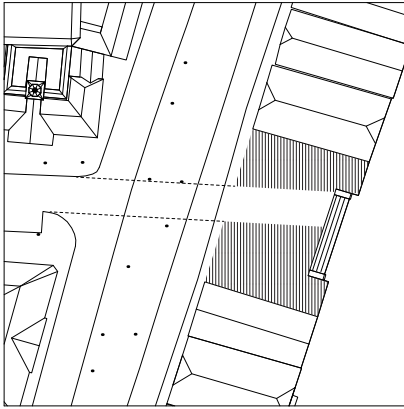
KANSKJE LESER KONGEN

S K R I V E T Å R N E T

Ingrid Austbø & William Fairminer

2014

Tårn med skrivestuer for byens forfattere



FORFATTER HUB

FORFATTERBOLIG (FRIBY)

SKRIVEKOLLEKTIV

SKRIVEPLASSER

SAMLINGSROM/KANTINE

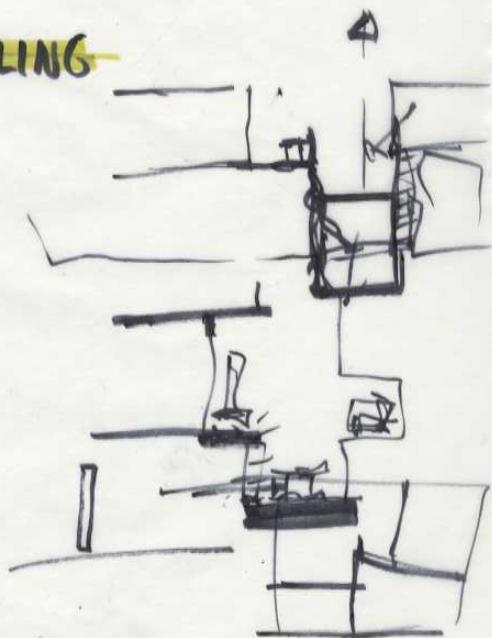
MØTEROM

KONTORER FORFATTERSENTRUM

FORFATTERLAGET

~~FORMIDLING~~

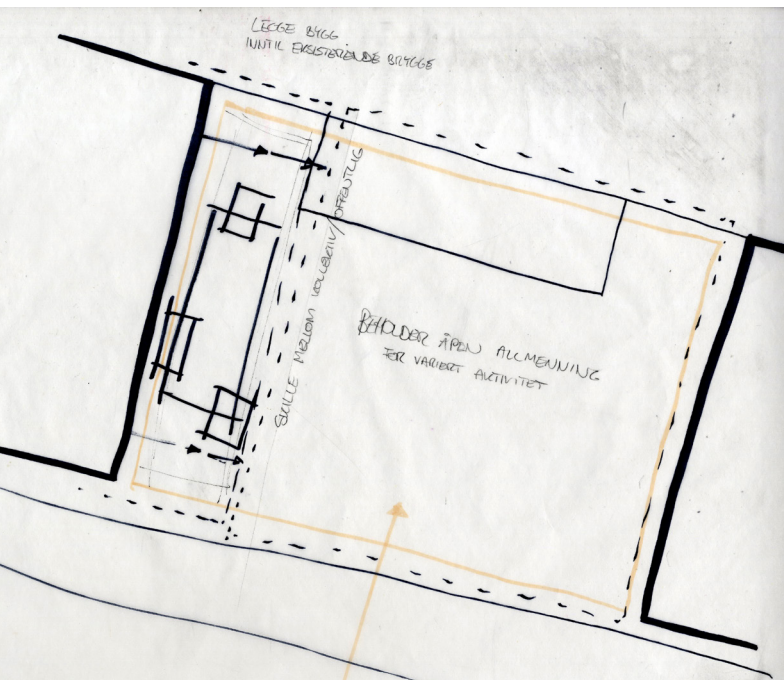
PARK





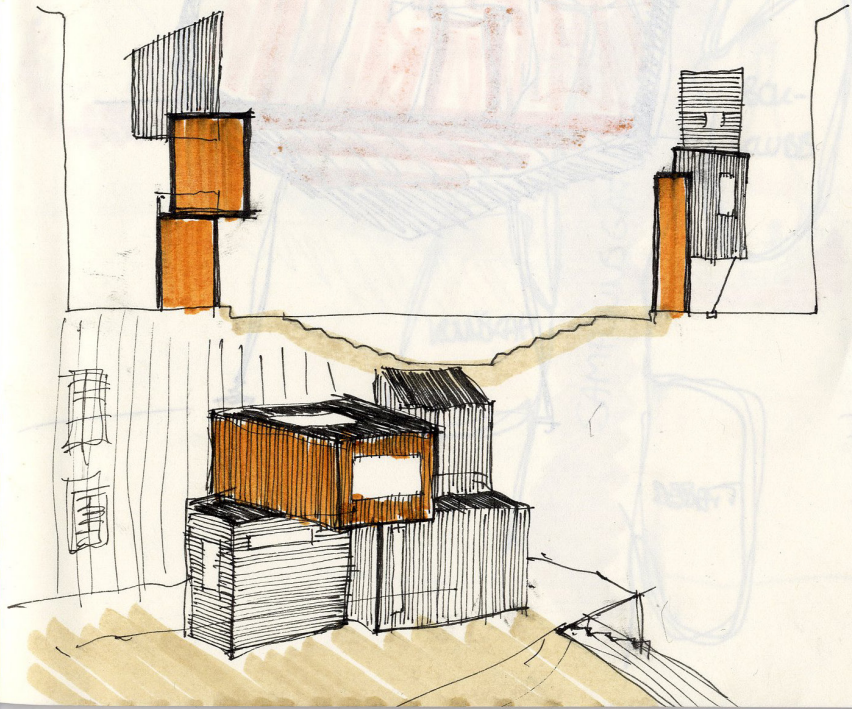
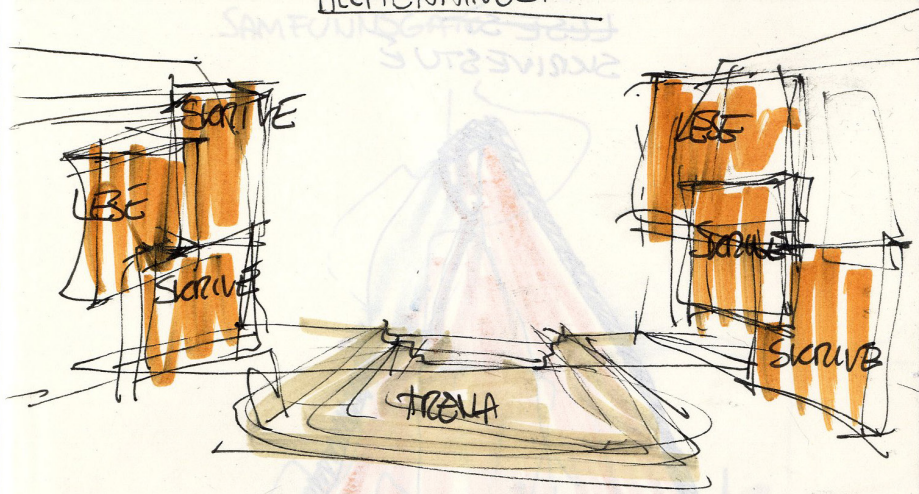


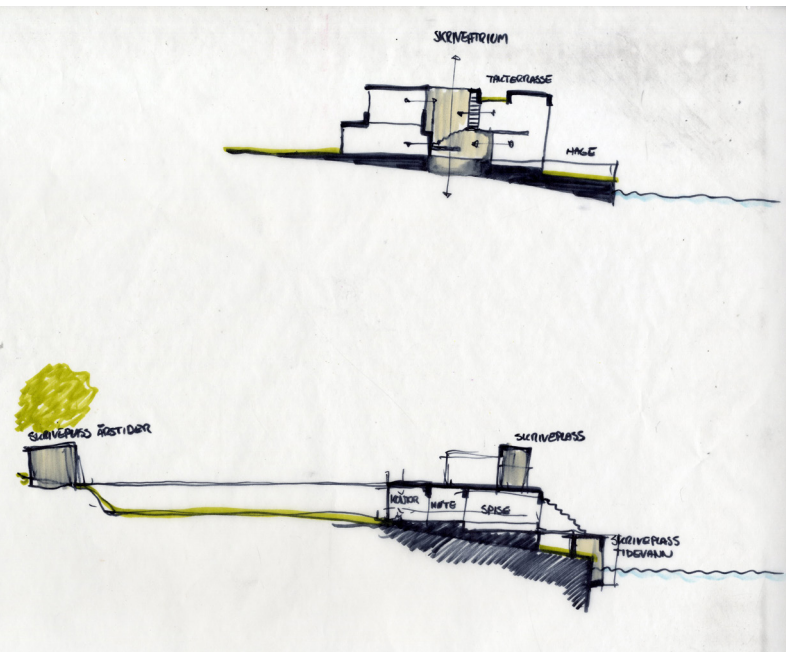
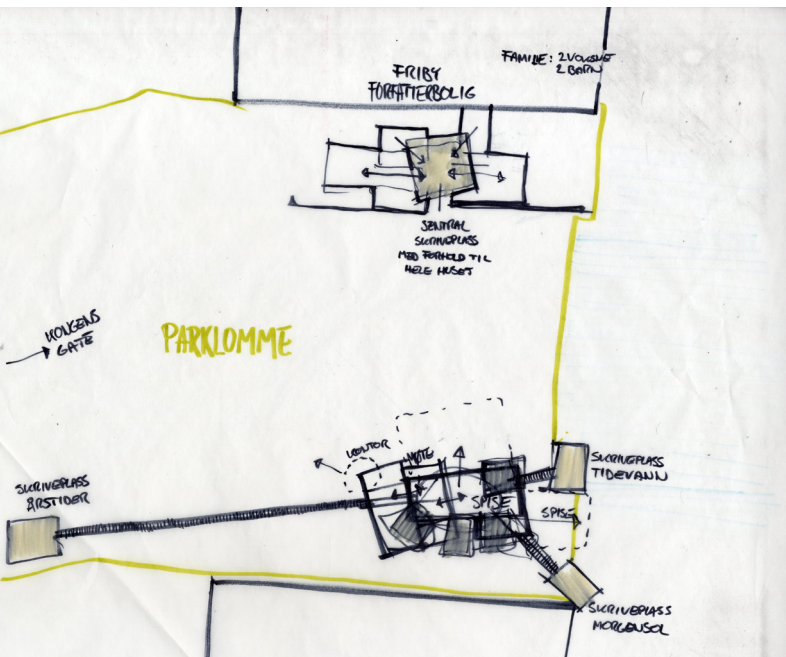
Bygge på allmenningen. Skape nye rom.

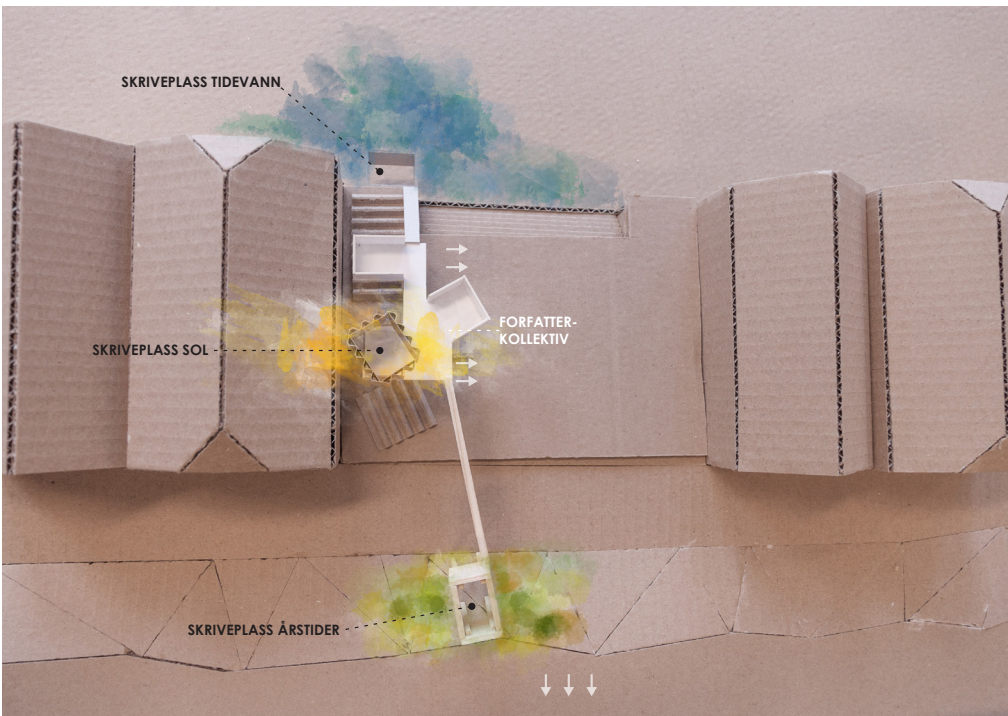
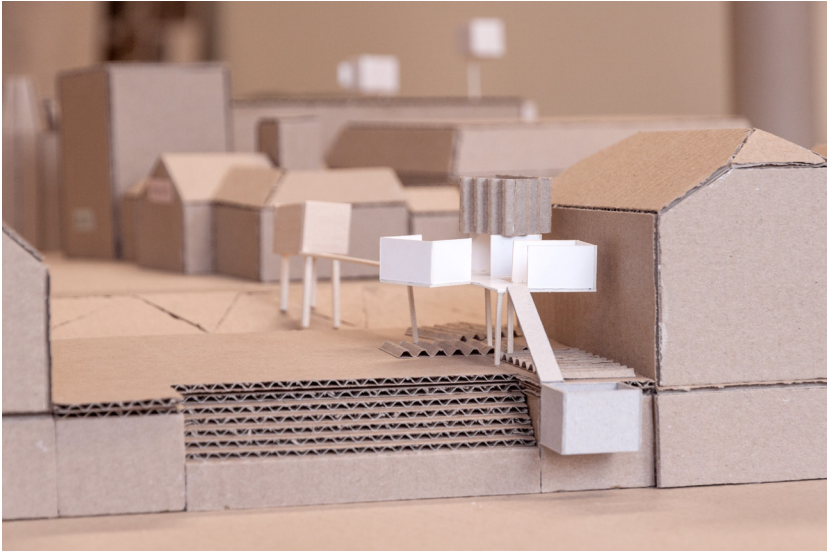


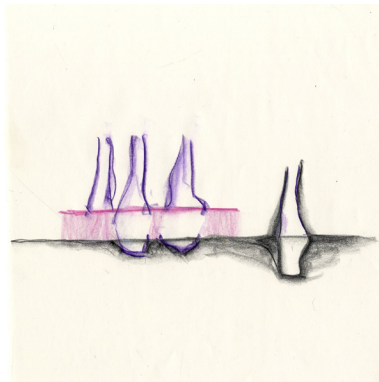
Bygge på siden. Opprettholde allmenningens åpenhet.

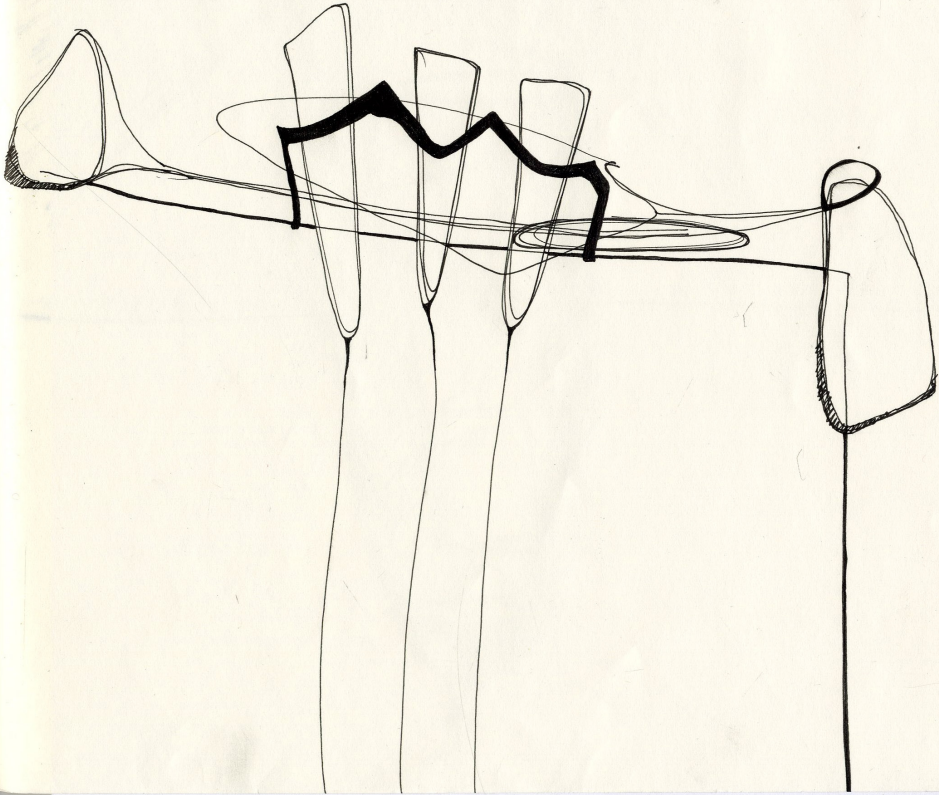
ALLMENNINGEN

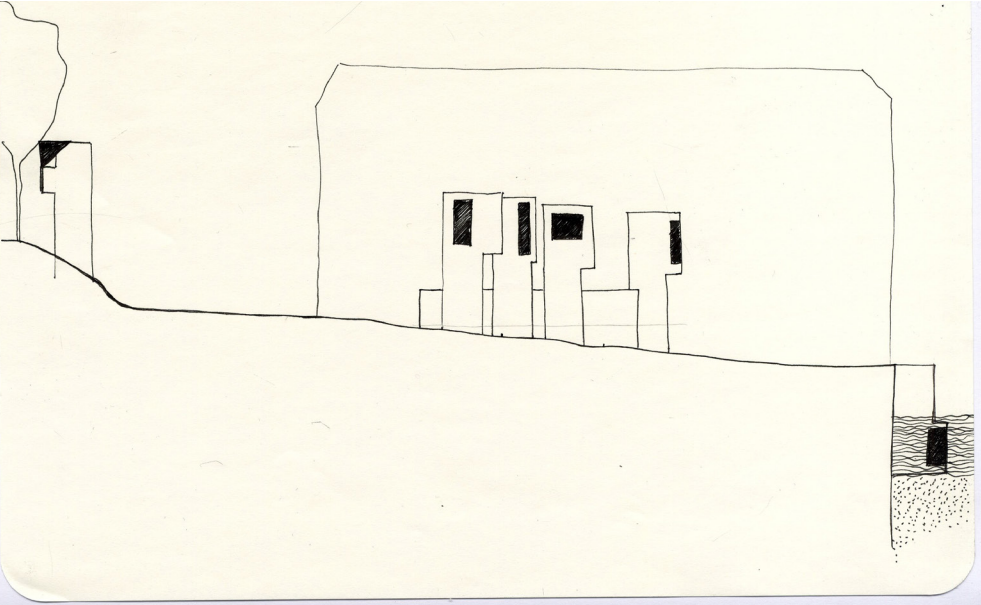
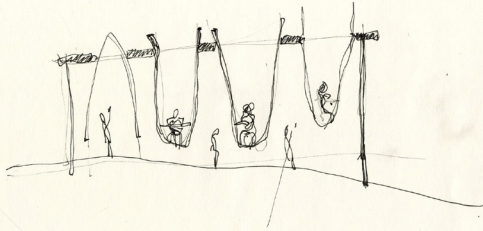


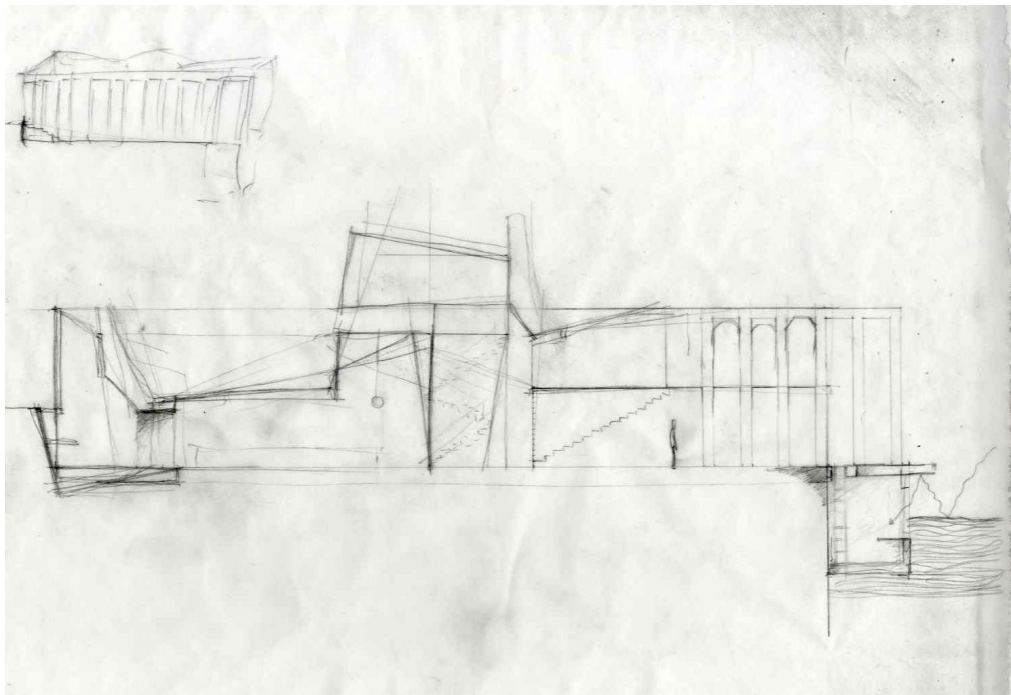




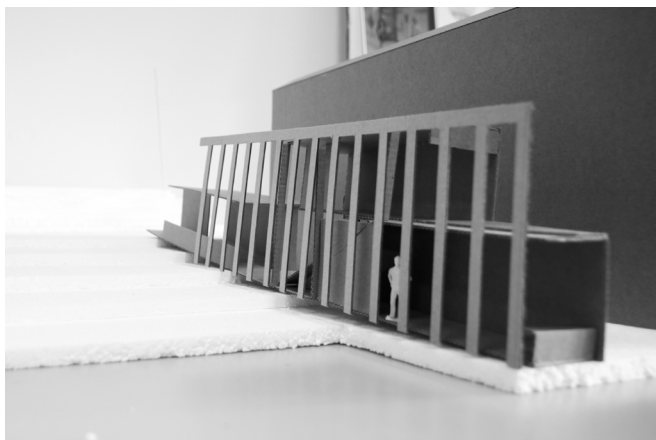


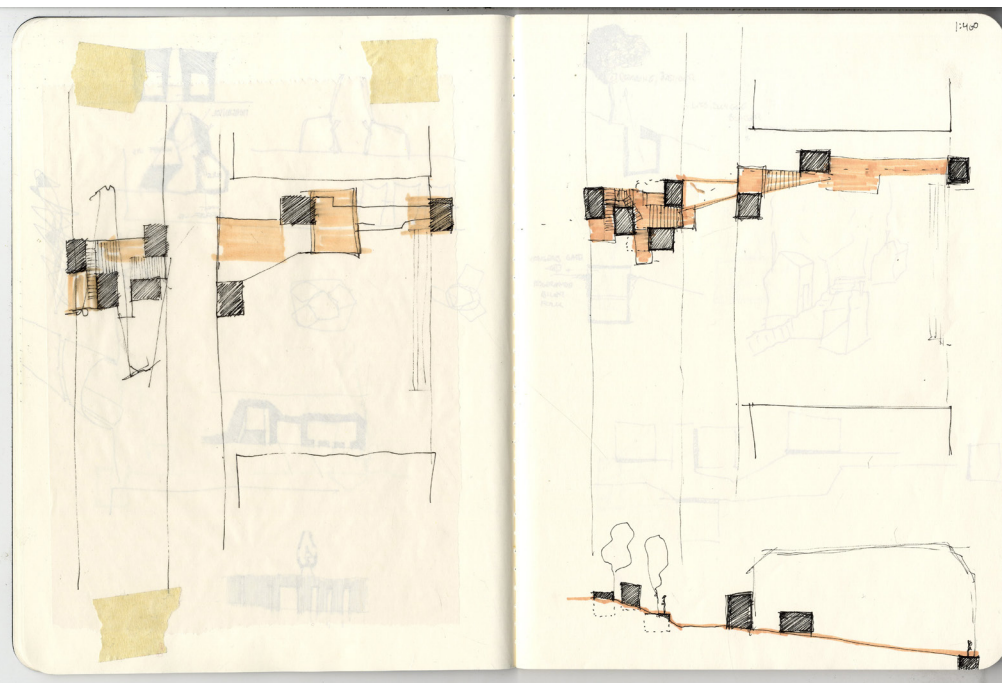




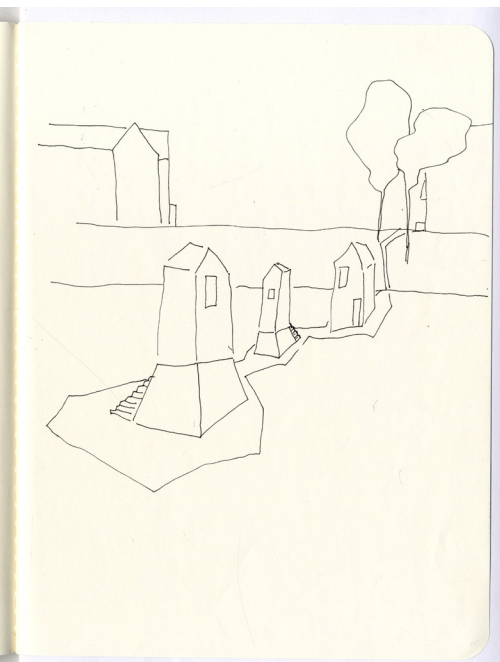


Forfatterkollektiv langs nordsiden av allmenningen.
Arkade som buffer mellom allmenningen og skrivestue





Skrivestuer spredt nedover fra Kongens gate til Nidelvas bredde.





SVULGESPØRNING

FORUM

BIBLIOTEKET

UTENIFRA, INNEIFRA

INSPIRASJON

SKRIVEROM

MINIMALT

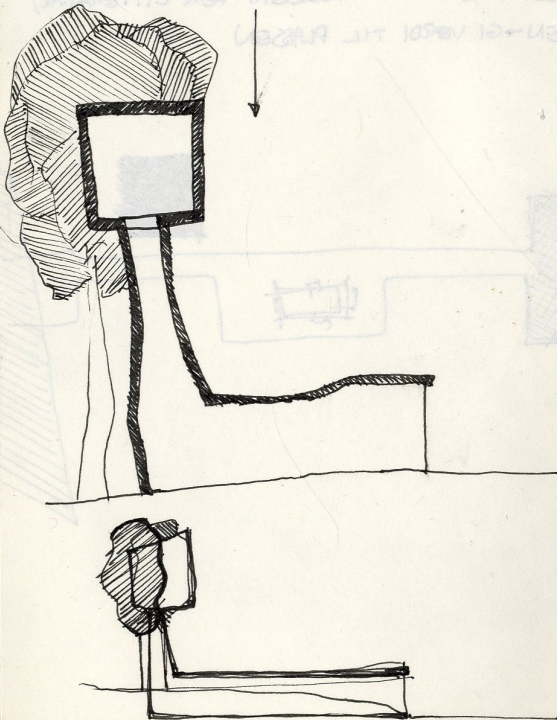
- ENKELT
- BILLIG

LESEROM

INTROVERT

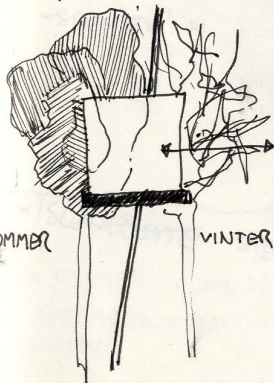
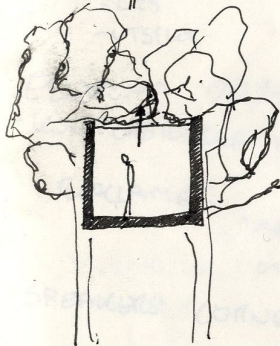
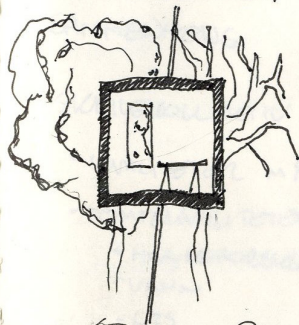
- LOMME I GATEN
- OASE
- RØMME FRA VIRKELIGHETEN

- INN I LITTERATUREN
- EN ANNEN VERDEN
- DRØMME
- REISE



ÄRSTIDER

- TRÄR
- BLADER
- ROM FOR FALNE BLADER



SOMMER

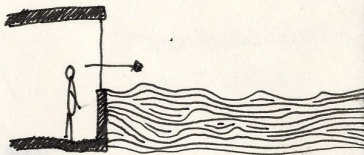
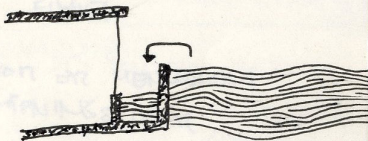
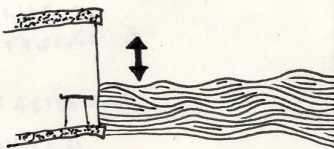
VINTER

DAGSLYS
SOL

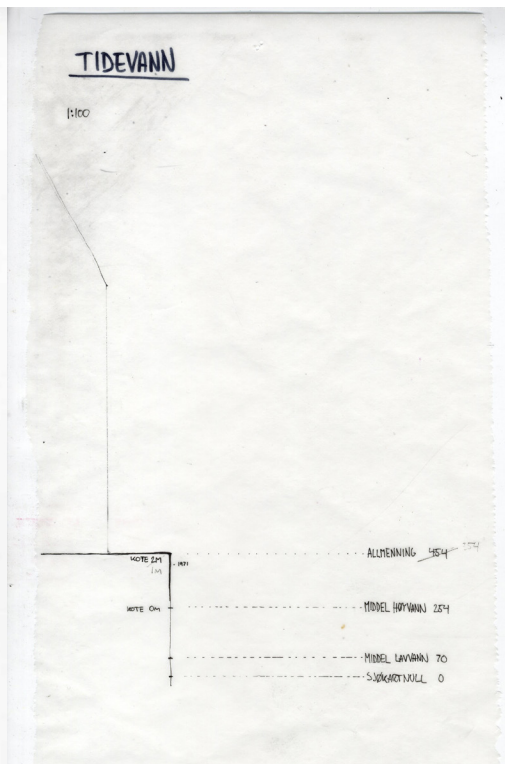
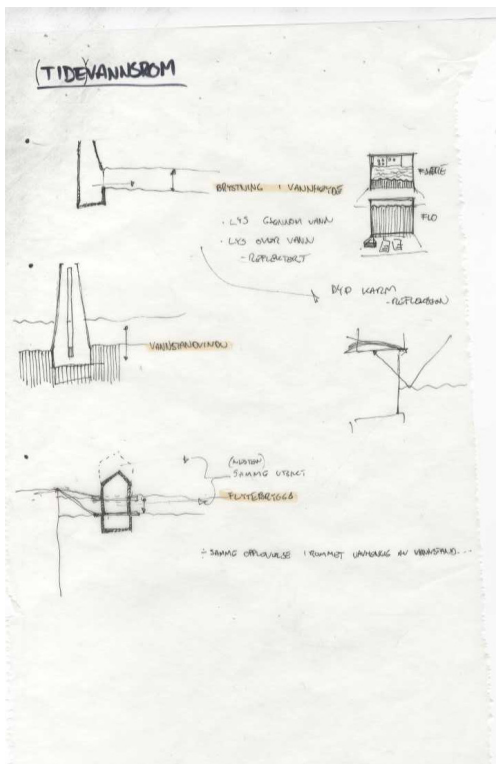
- LYS/SKYGGE
- HIMMEL
- BEVEGELSE
- SKYGGESPILL
- FARGER

TIDEVANN

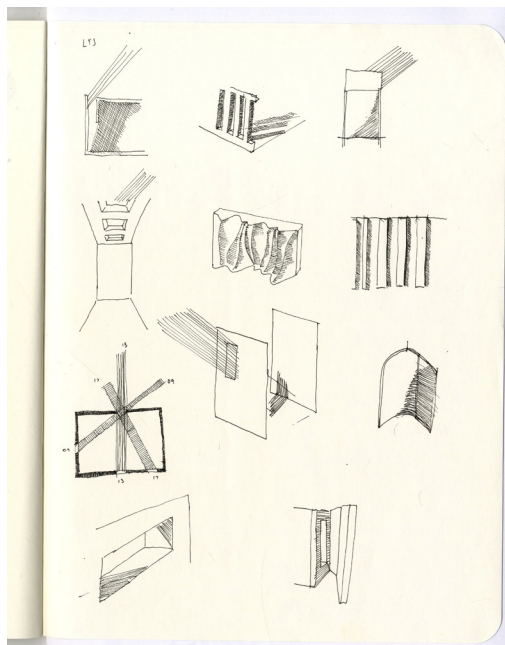
- VANNSTAND
- MERKER
- TARE
- VANNMERKER
- RUST





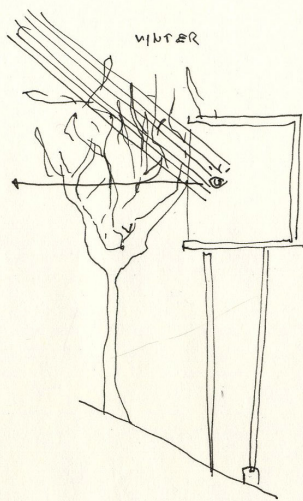
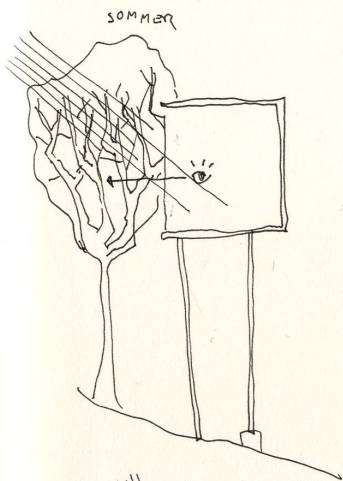


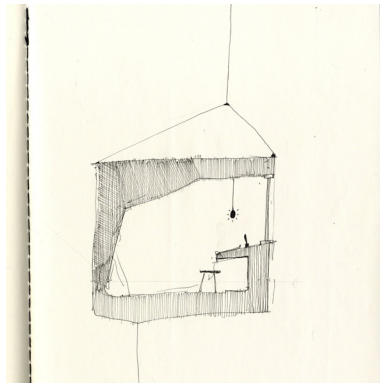
Forskjellige kvaliteter som kan utnyttes på tomten

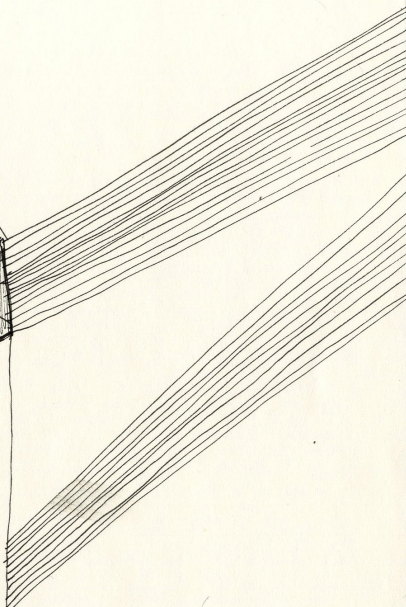
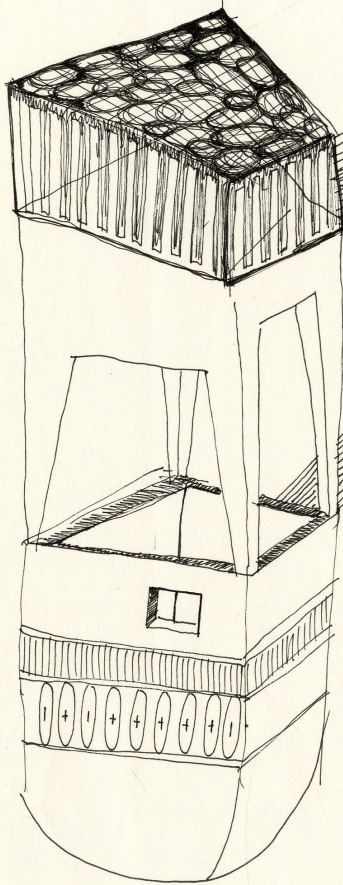


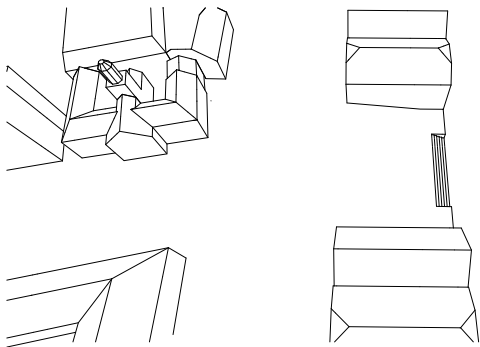


TRÆR

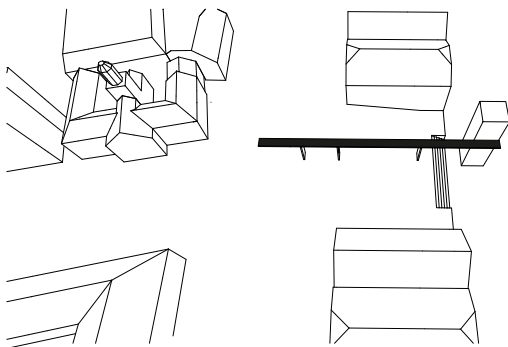




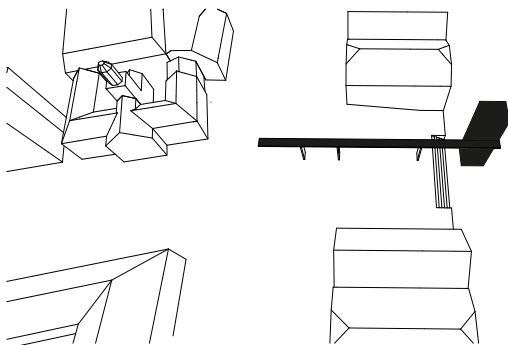




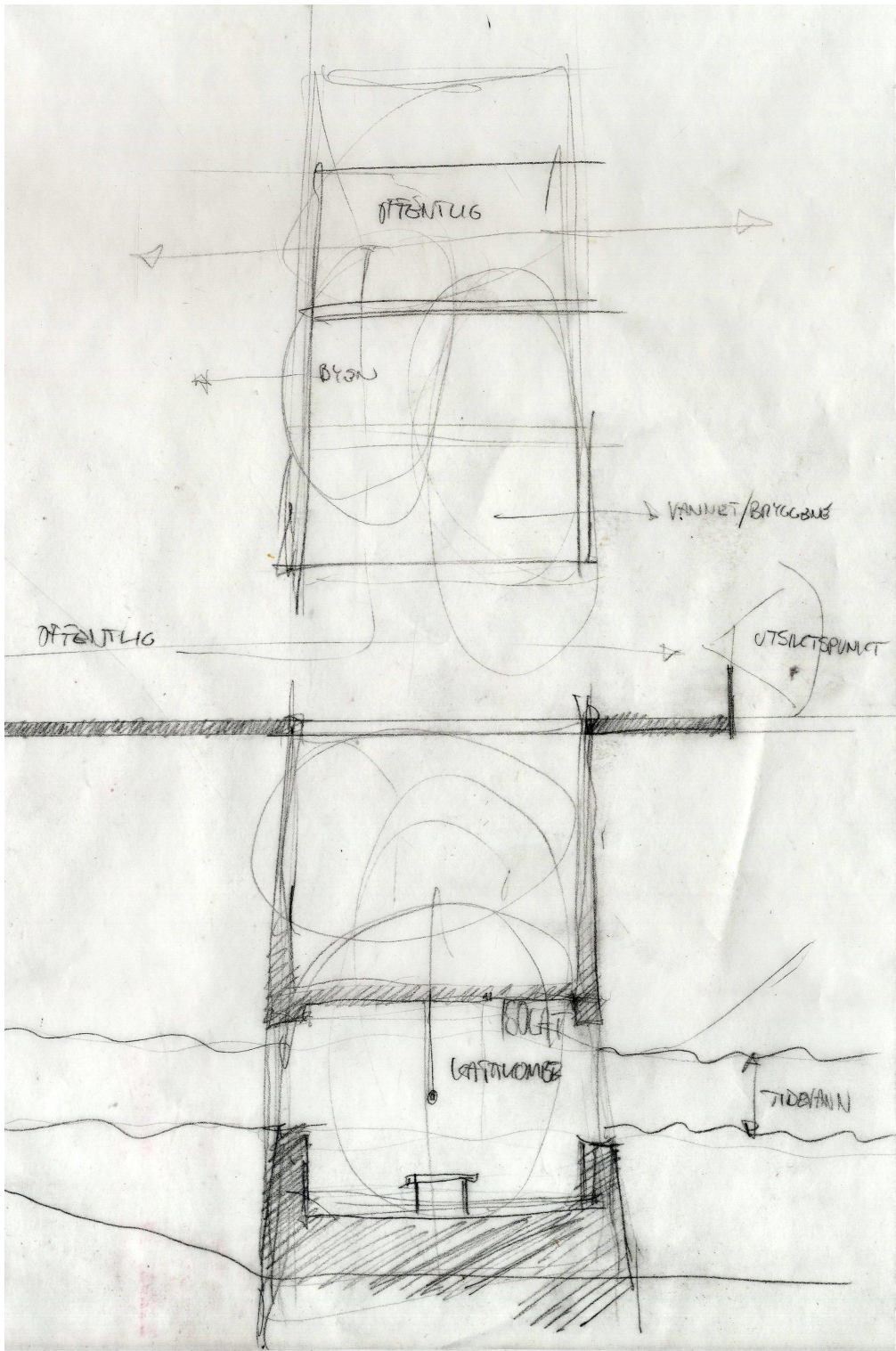
Allmenningen og Nidelva mangler kontakt med Kongens gate og resten av byen

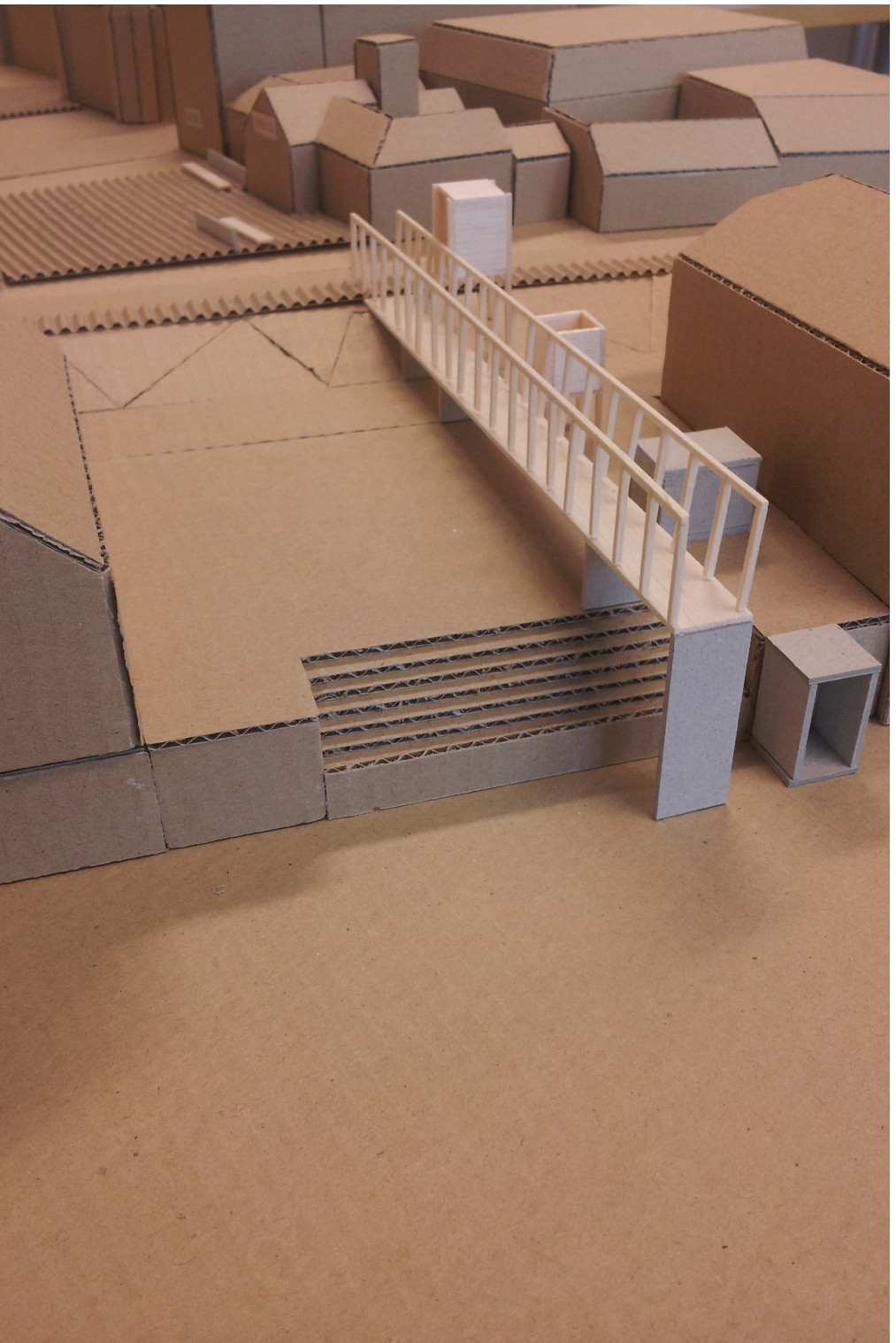


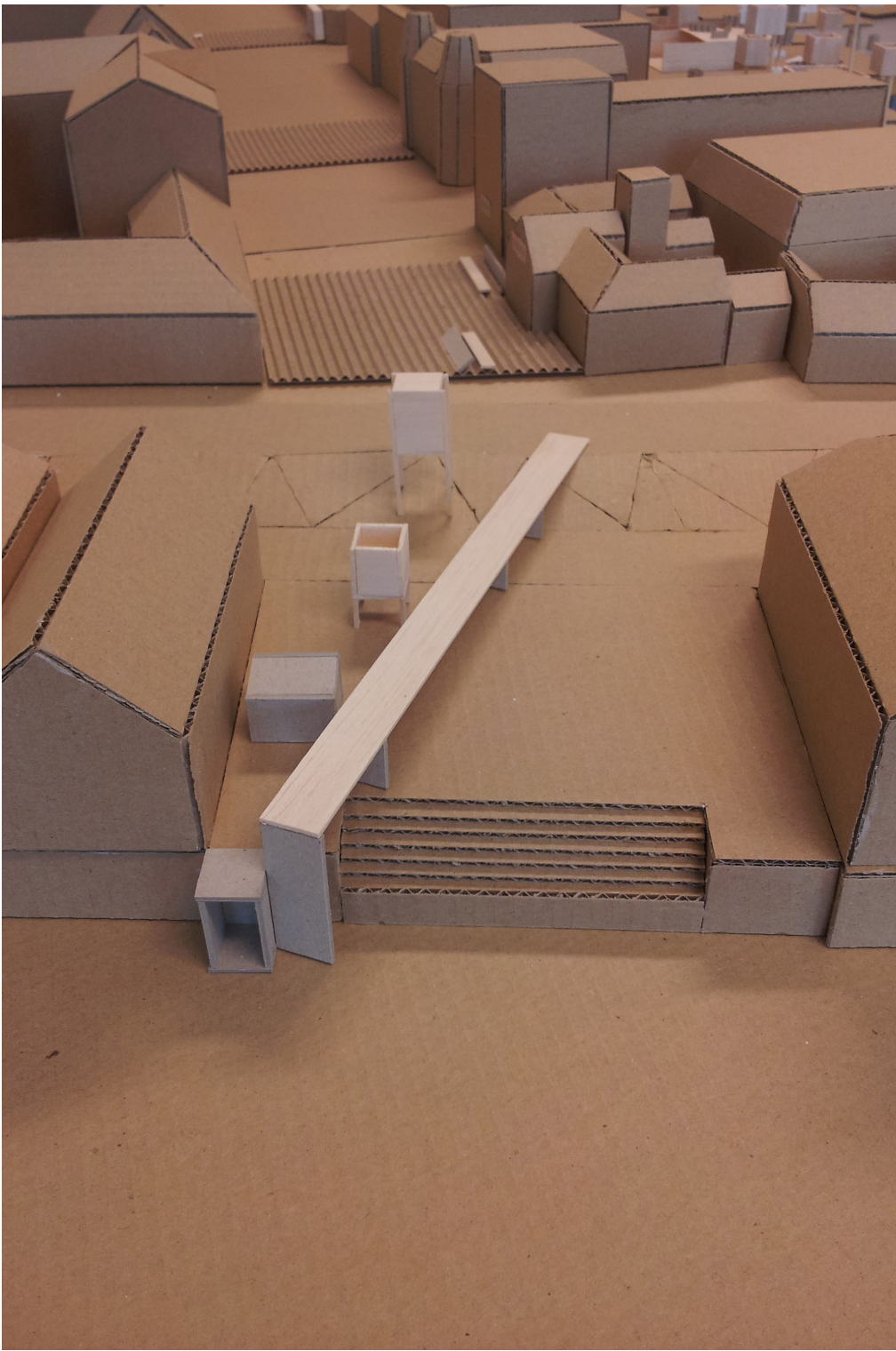
Broen skaper en kobling mellom Kongens gate og Nidelva.



Tårnet huser skrivestuer i inspirerende omgivelser i tillegg til å gi publikum utsikt over byen



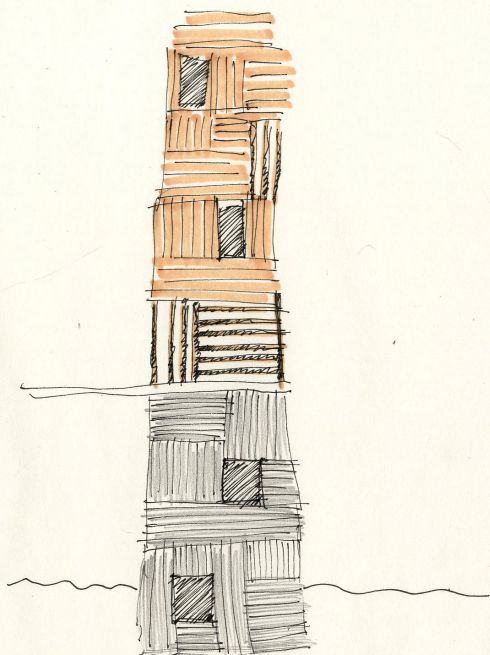
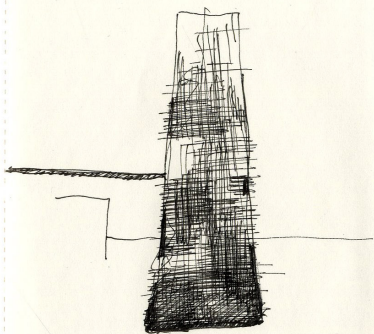






Inspirasjon fra tyrtårnets isolasjon og signaleffekt

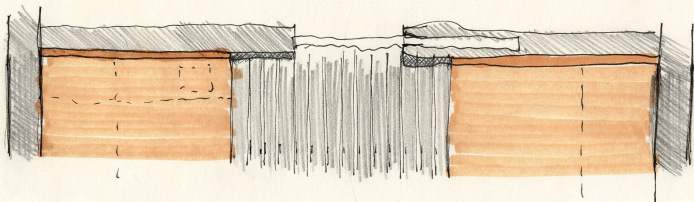
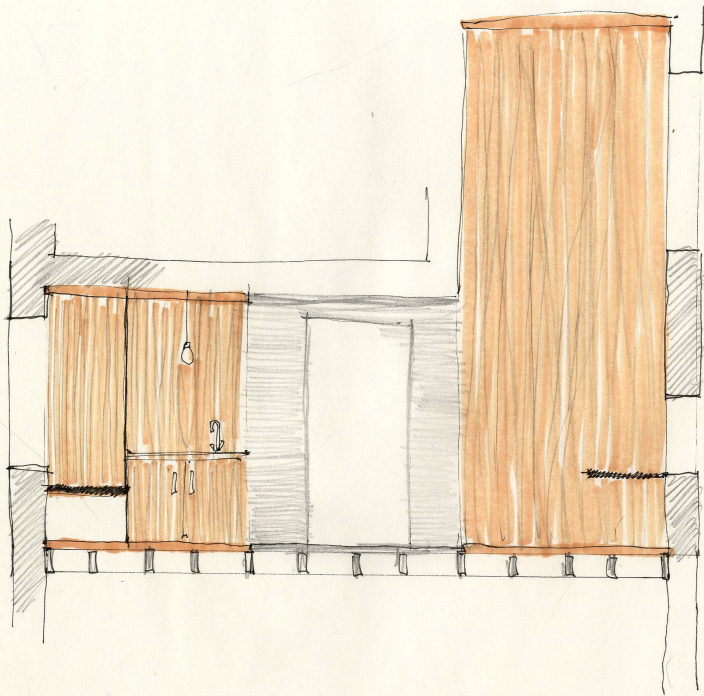




Tårnets materiale går fra tungt til lett med betong i bunnen og trekonstruksjon i toppen.

Skrivestuen får en todelt inndeling:

- En skriveplass med dobbel takhøyde, overlys og et lite utsiktstvindu.
- En lunere krok med sitteplass i vinduet og et tekjøkken.



FERDIG SNITT

FERDIGE PLANER

MODELLBILDER MURMODELL

BILDER 1:200 MODELL

KANSKJE LESER KONGEN
DIPLOM VÅR 2014 NTNU