

*“Da alt var omsluttet av en taus ro og natten var halveis i sitt løp,
kom det ovenfra et skjult ord i meg, fra kongetronen.” (Vis 18,14)*

Kapell ved Pilegrimsleden

Trygve E. Rosenvinge, 2013

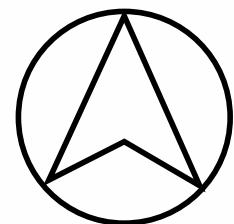
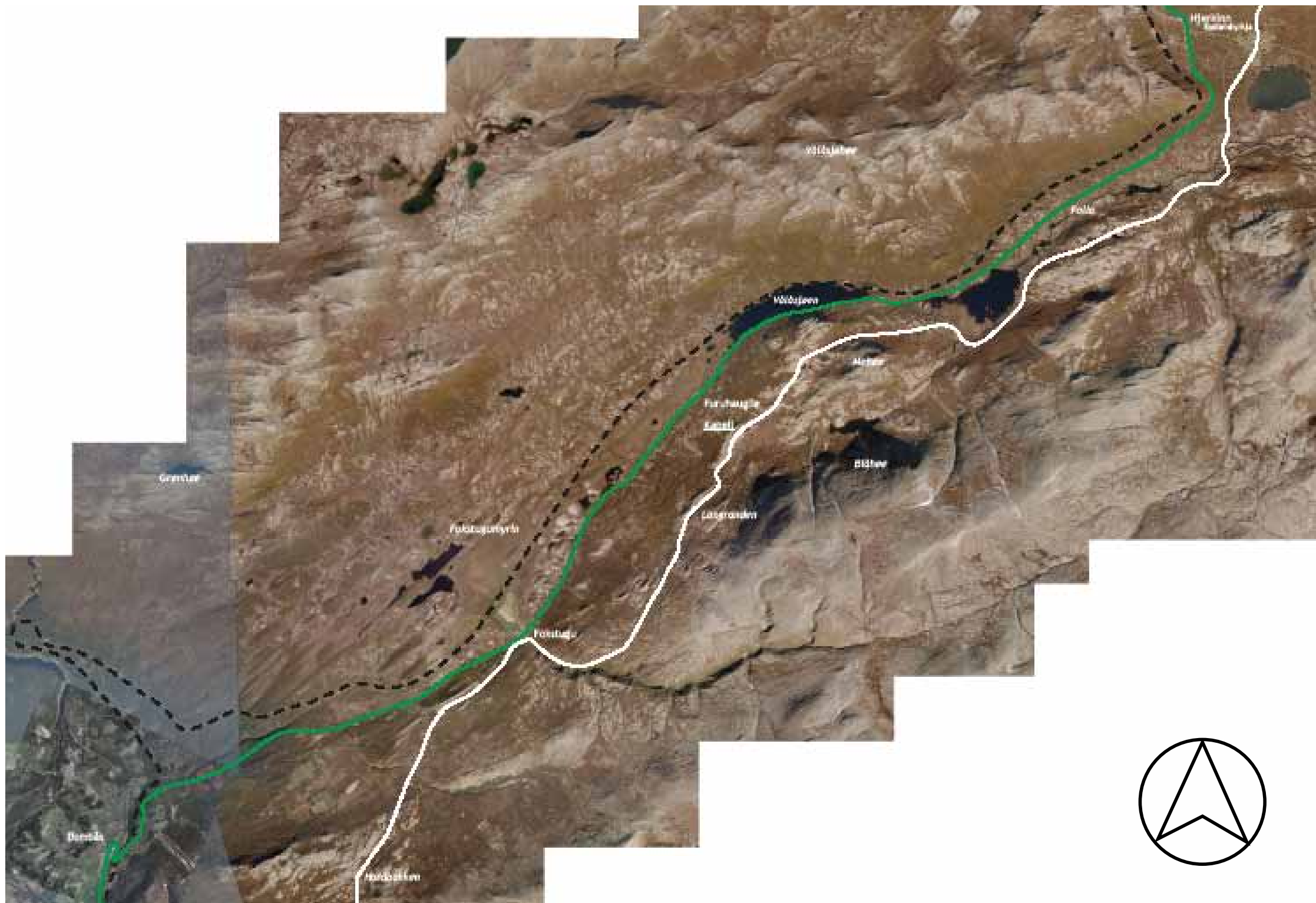
Presentasjon

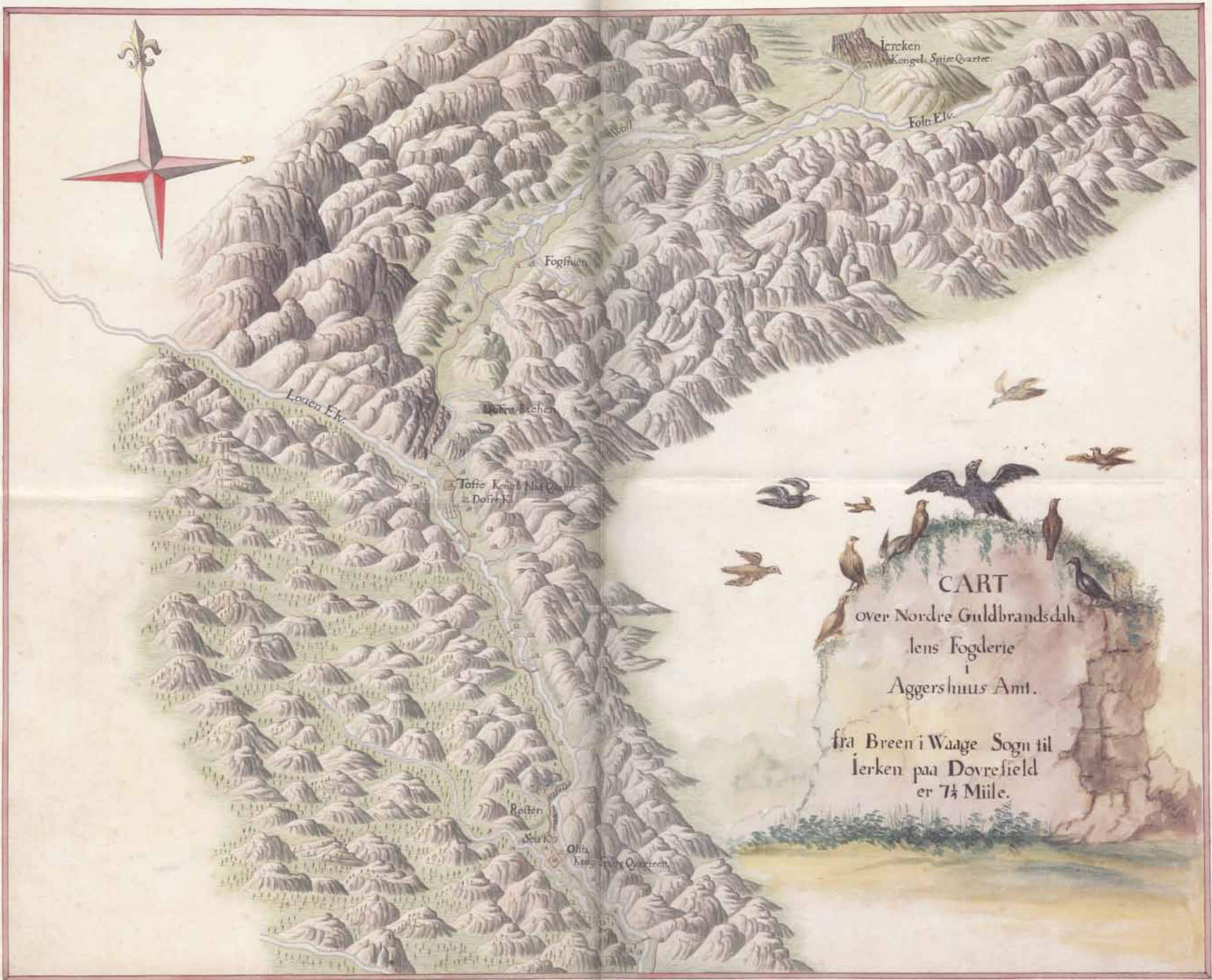


Kapell ved Pilegrimsleden, Trygve E. Rosenvinge, 2013

Innledning







Iercken
Kongel. Spise Quarter.

Fohn Flv.

Foghuen

Louen Flv.

Dobra Bachen

Toffe Kongel. Nils Quarter.
Dofte K.

Roffen

Seu K.

Olfa
Kongel. Spise Quarter.

CART
over Nordre Gulbrandsdals
lens Fogderie
i
Aggershuus Amt.

fra Breen i Waage Sogn til
Iercken paa Dovrefield
er 7 1/2 Miile.



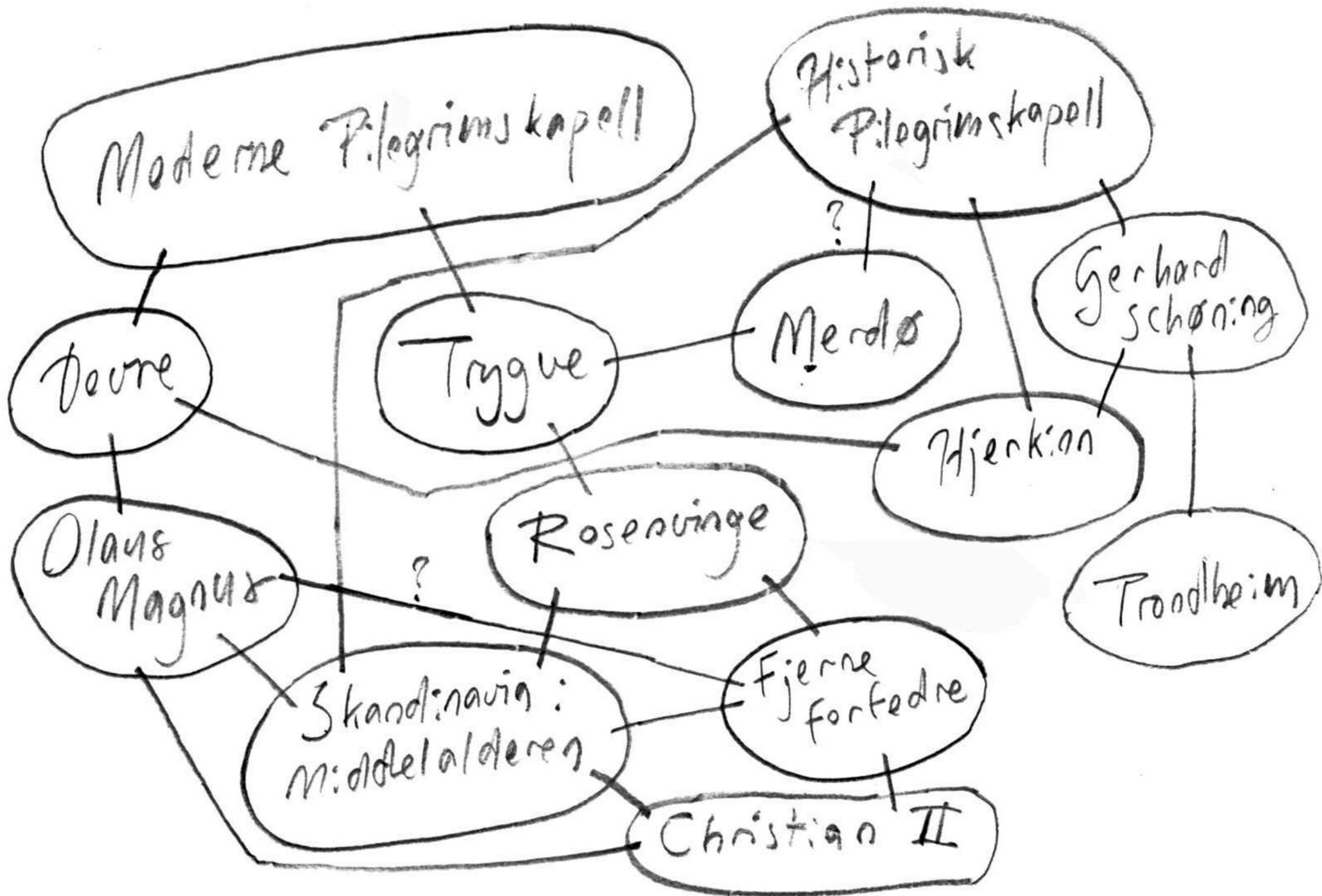
Guorledis mand skal Seyle i
det Vestre gaff.

norduest fra eder / De vesten for er graa Klip-
per / oc østen for røde Klipper / Oc der staar en
huid Kircke ved stranden / den kunde i icke see
vden i ere der nær hof.

De Dromling

Item det Epland Hessees er altsam
men røde Klipper.





Kapell ved Pilegrimsleden, Trygve E. Rosenvinge, 2013

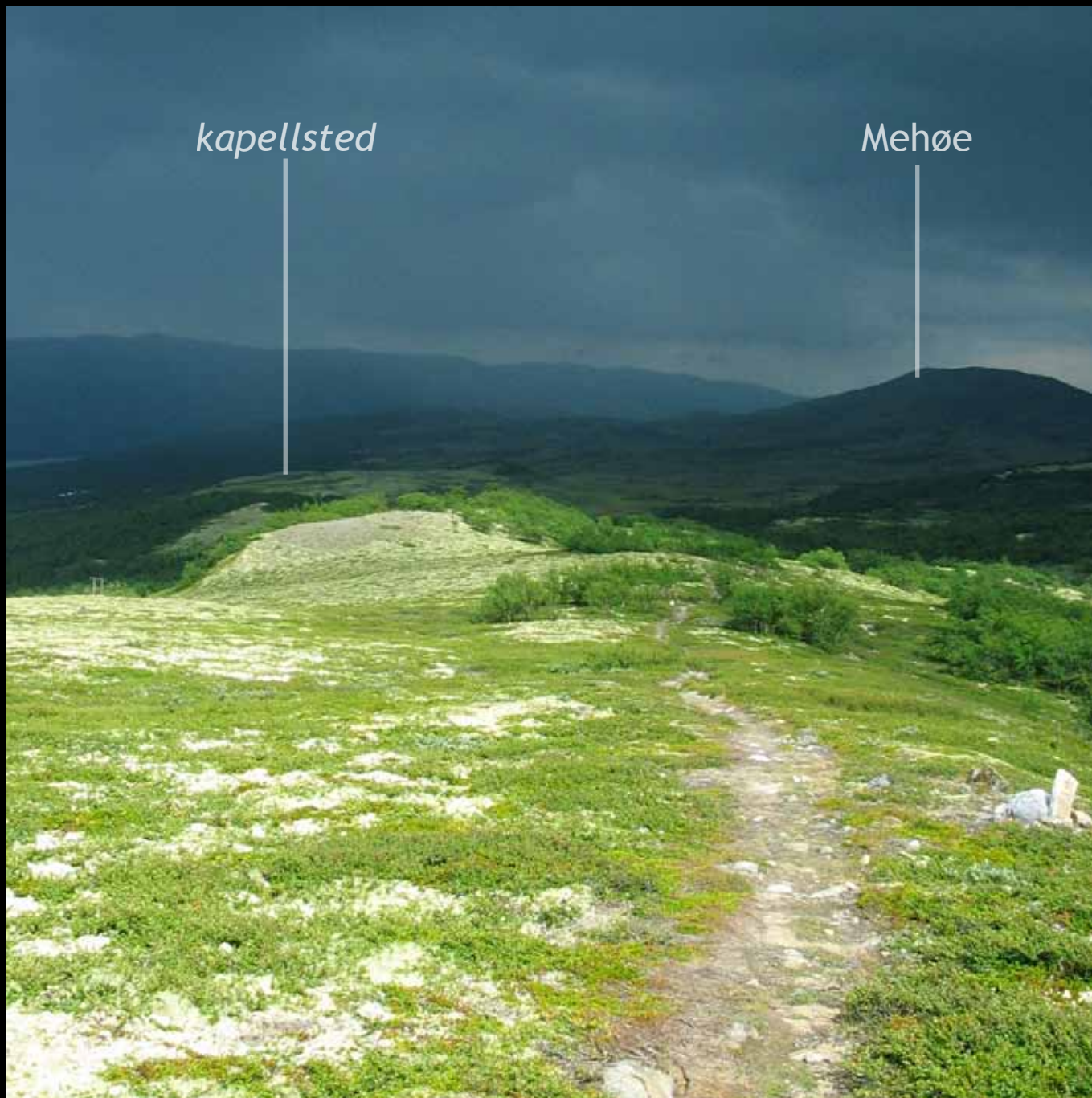
Del I

Pilegrimsleden i bilder



kapellsted

Mehøe







kapellsted



kapellsted









Mehøe

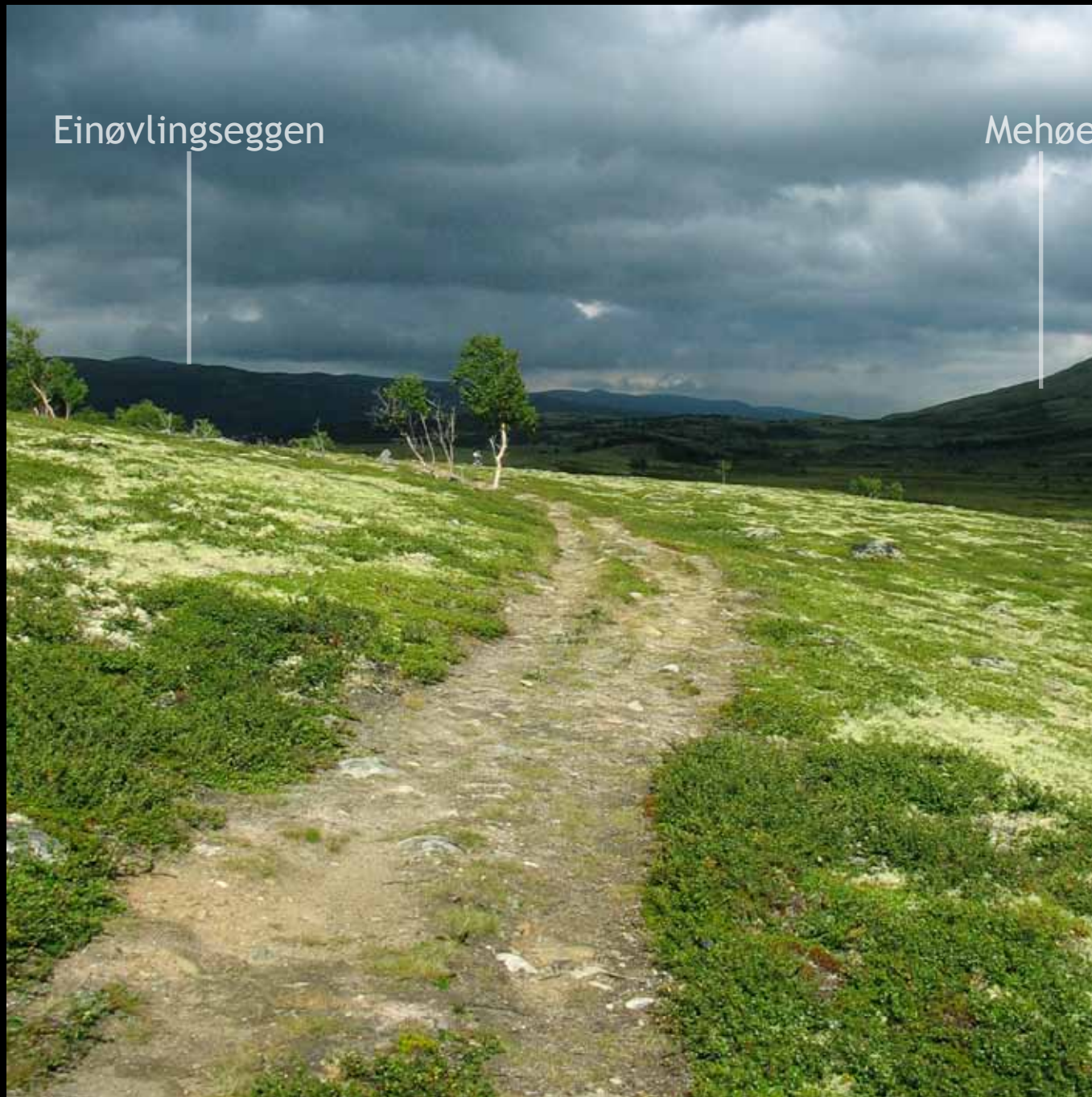






Einøvlingseggen

Mehøe



Einøvlingseggen



Skredahøin



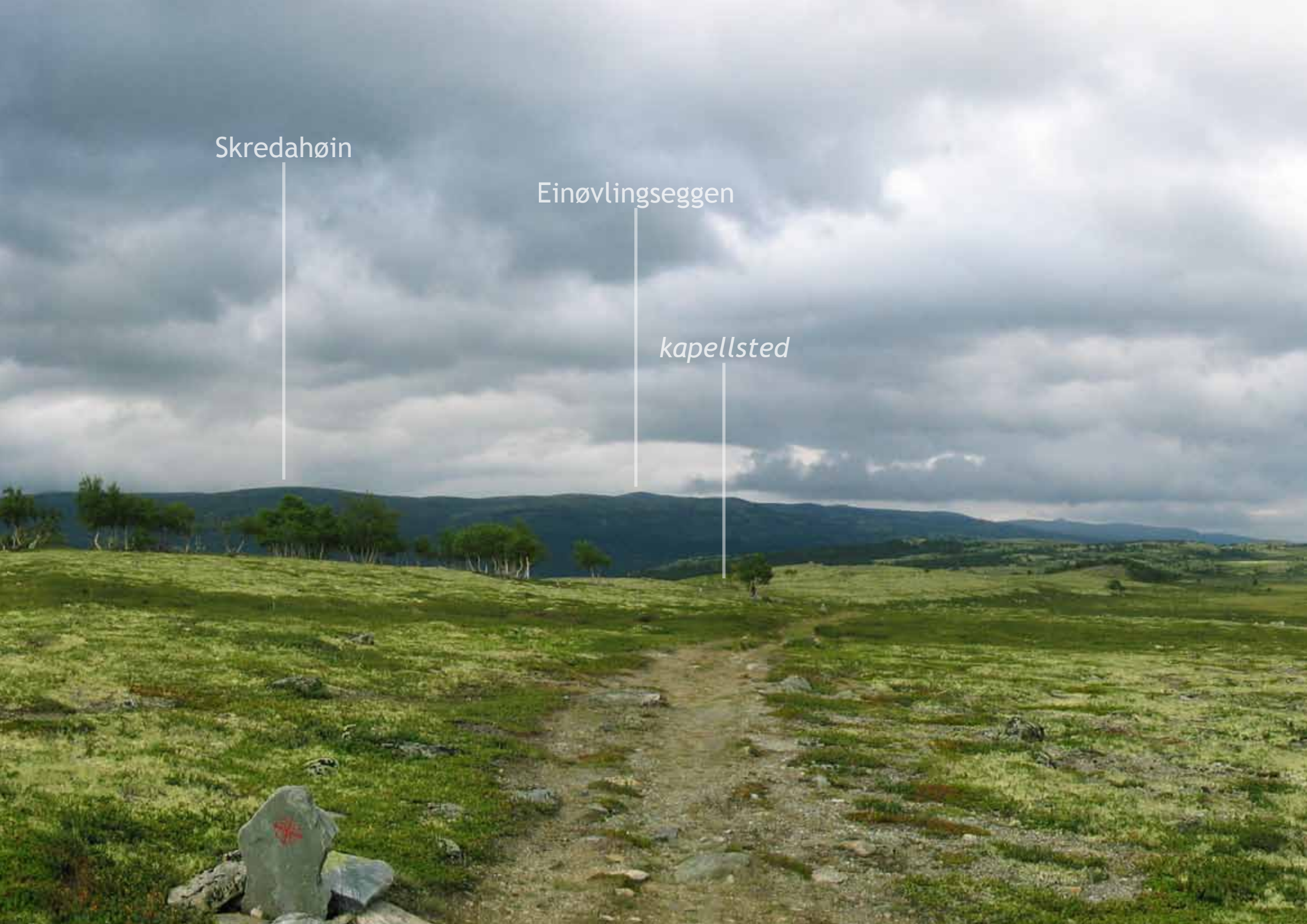
Einøvlingseggen



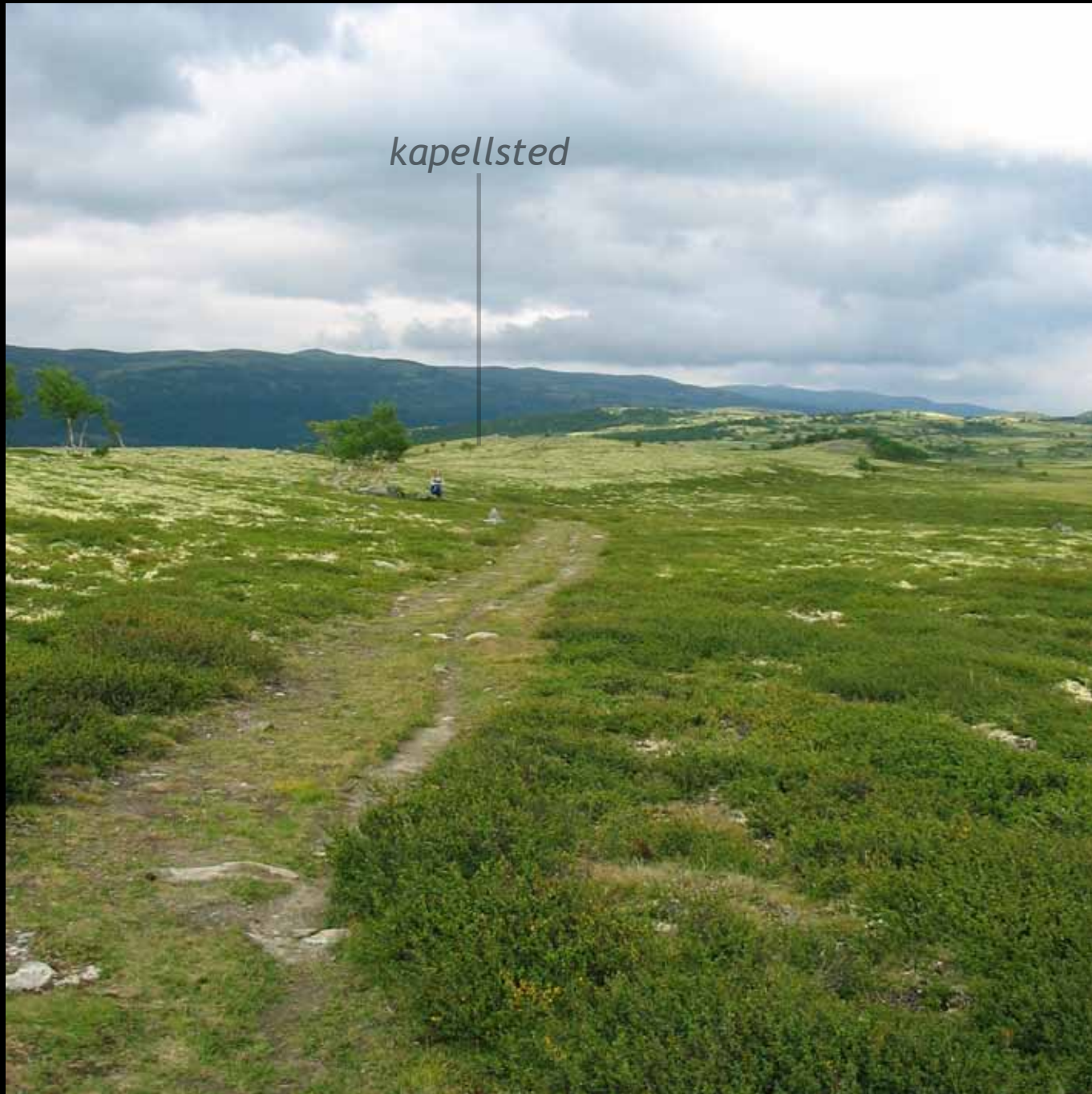
Skredahøin

Einøvlingseggen

kapellsted



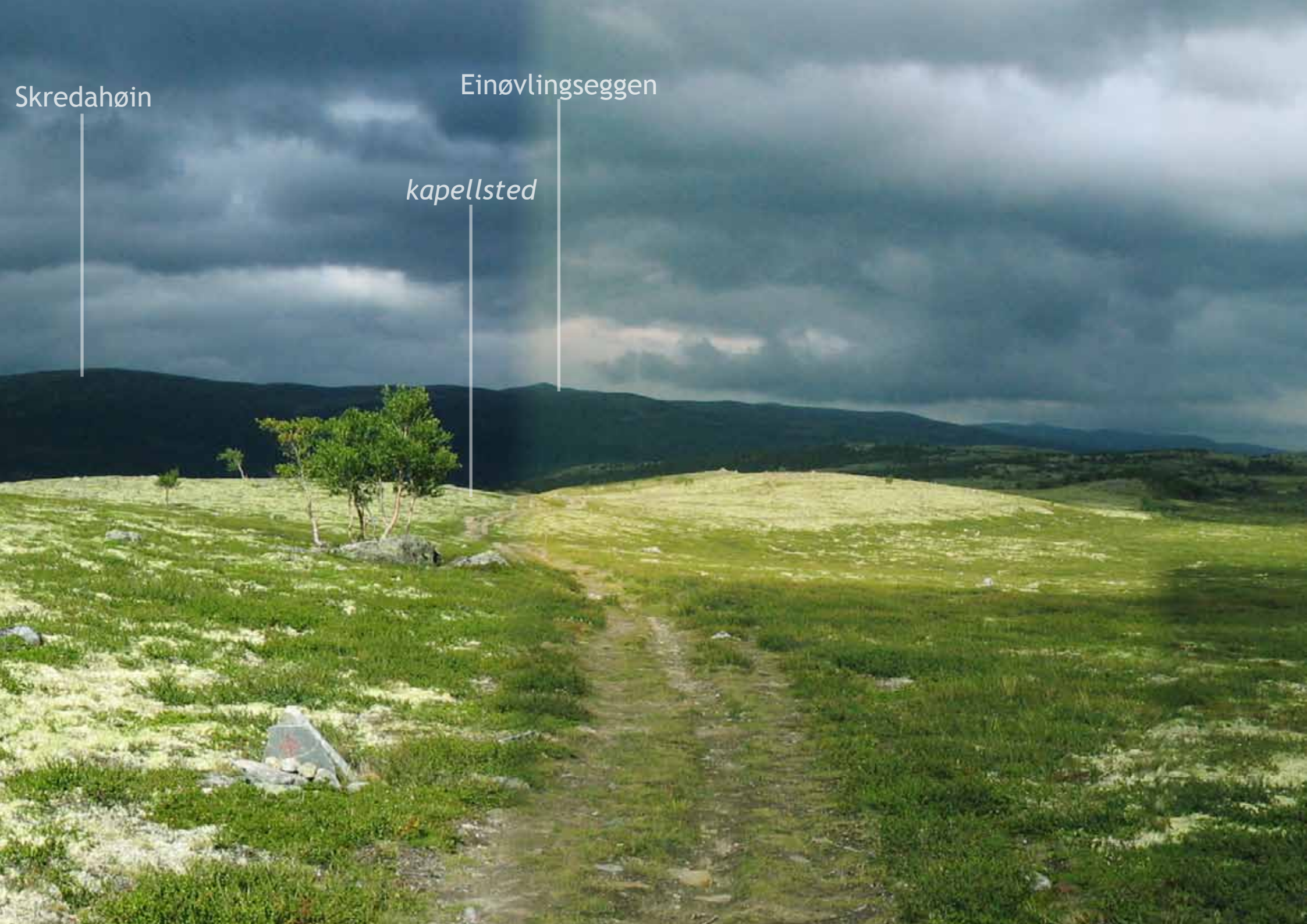
kapellsted



Skredahøin

Einøvlingseggen

kapellsted



kapellsted





kapellsted



kapellsted





kapellsted



kapellsted



kapellsted

Einøvlingseggen

kapellsted

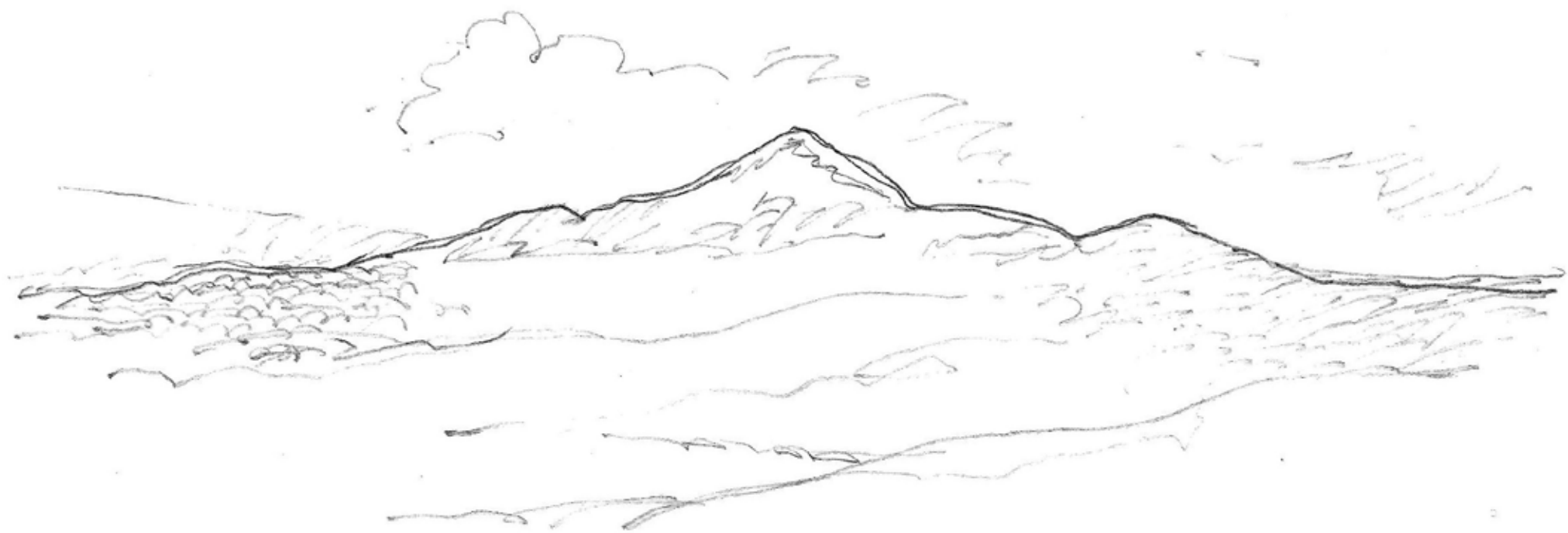






Grønhøe

kapellsted







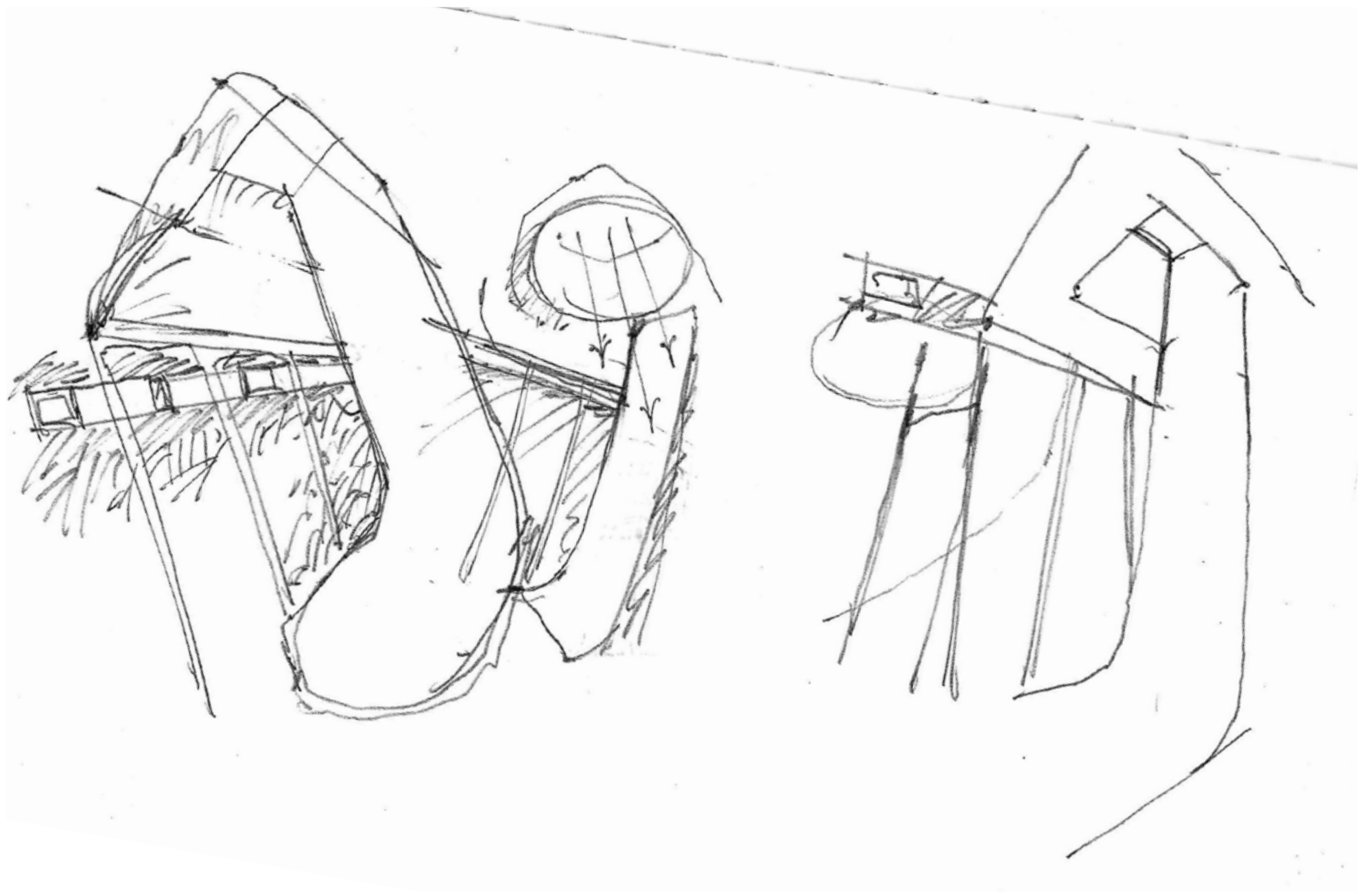


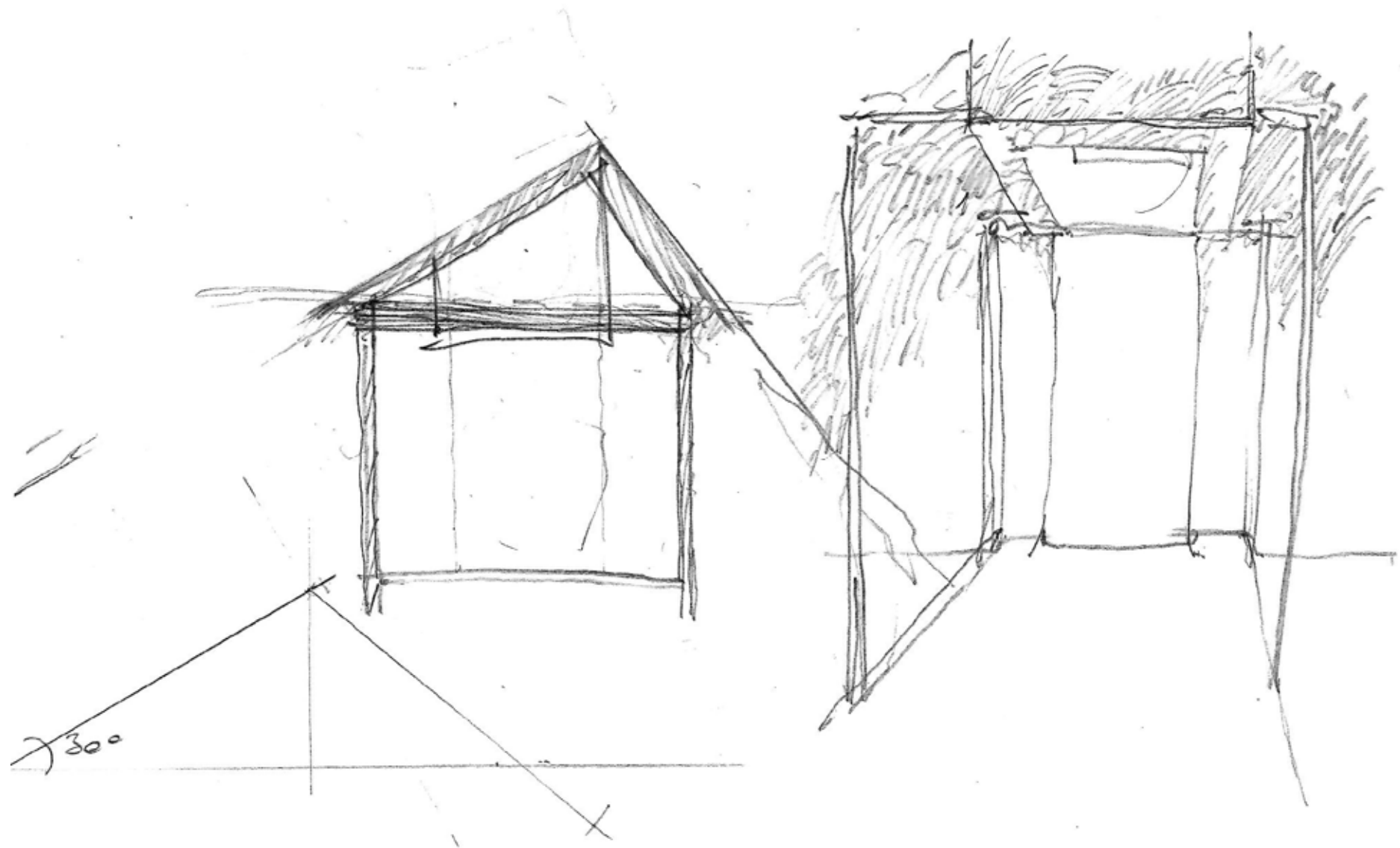


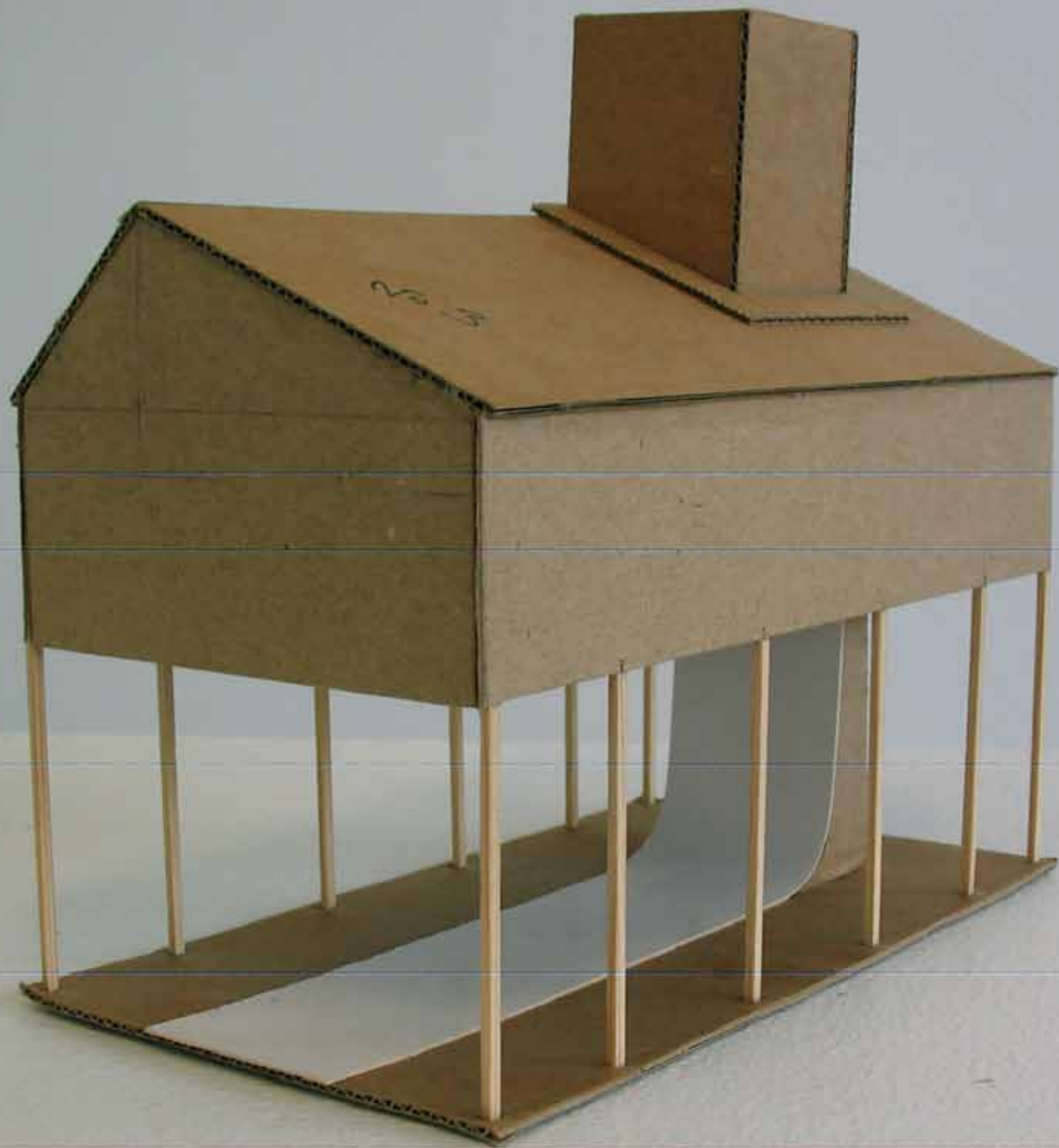
Kapell ved Pilegrimsleden, Trygve E. Rosenvinge, 2013

Del II

Prosess

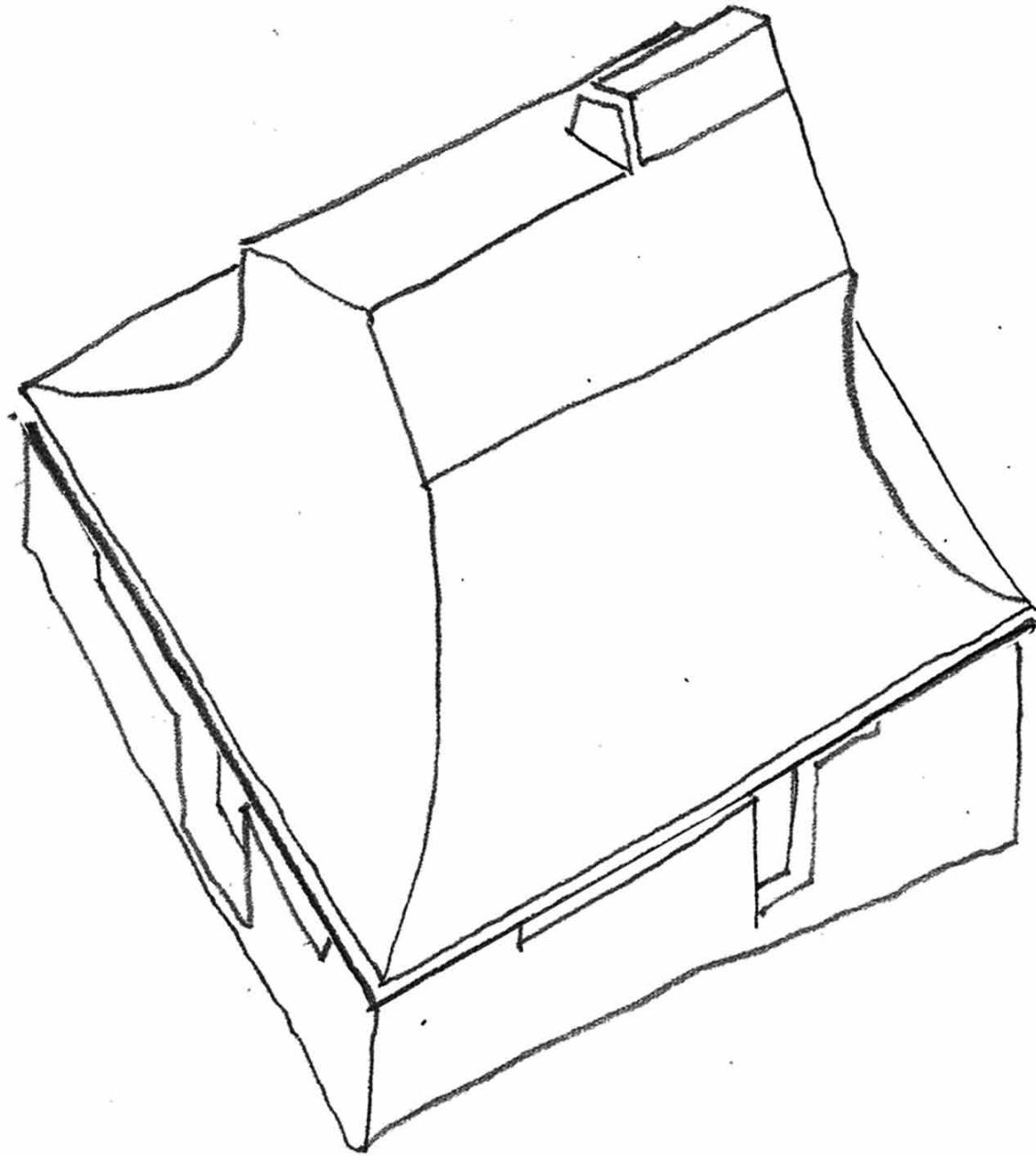


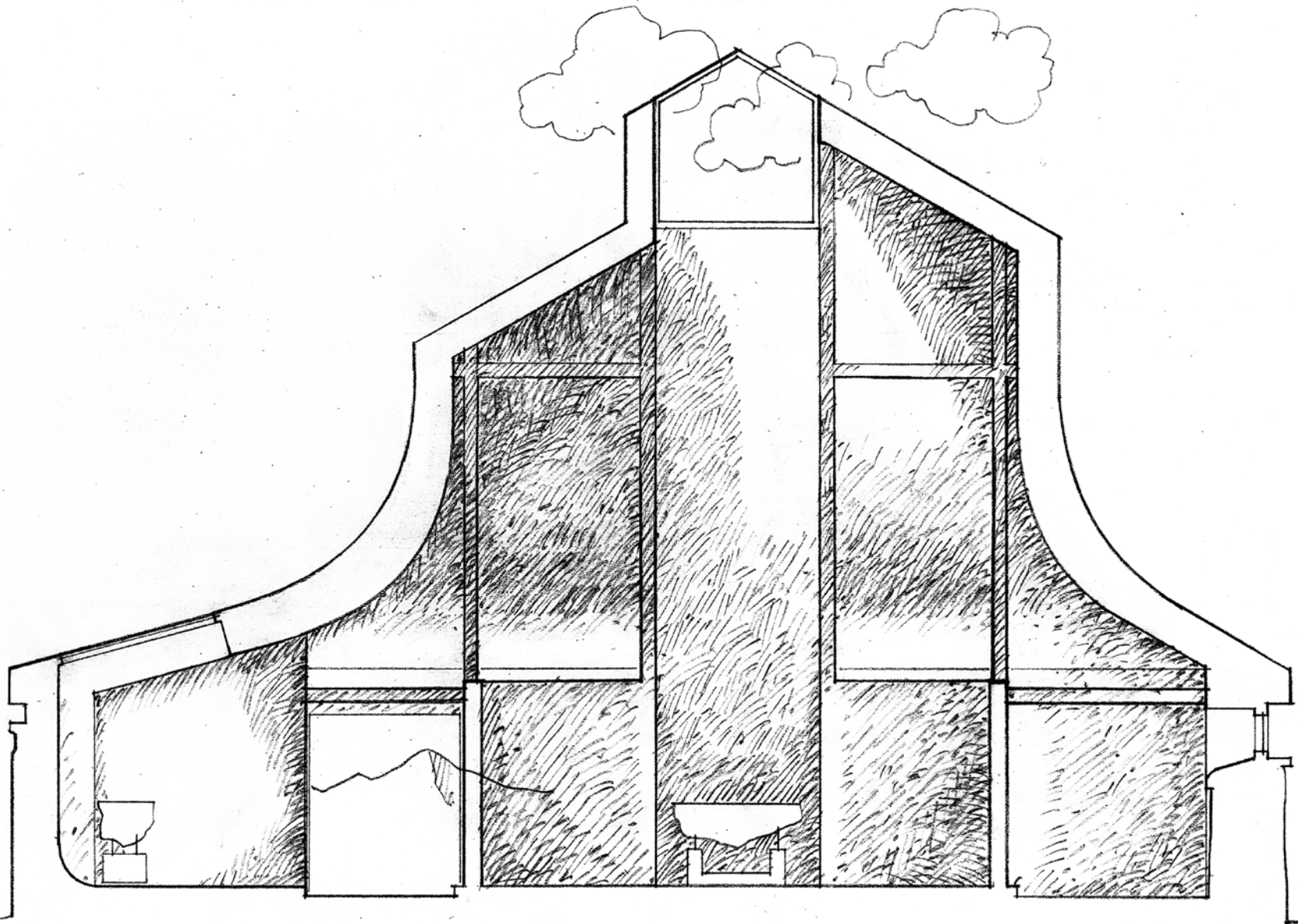




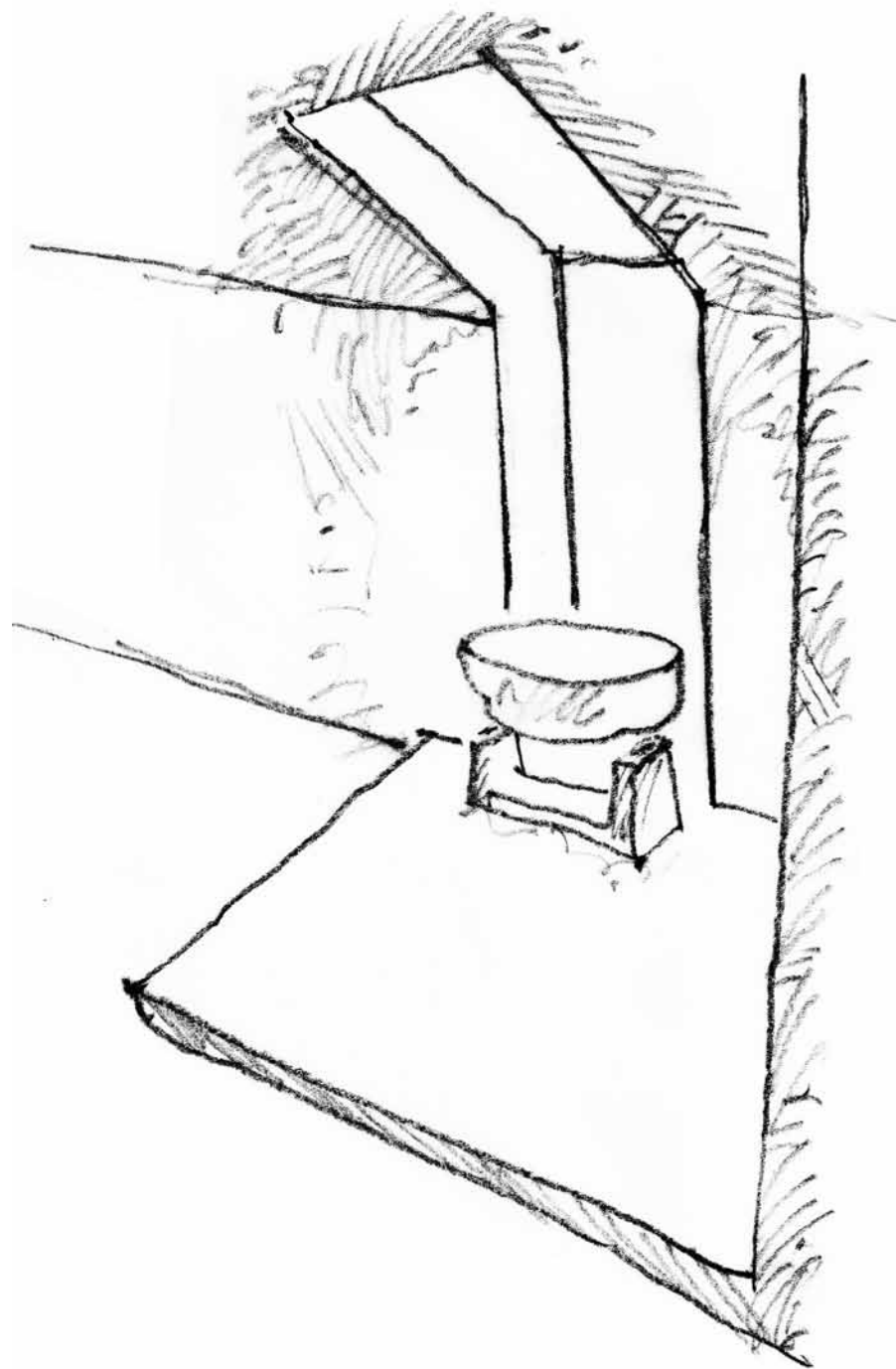










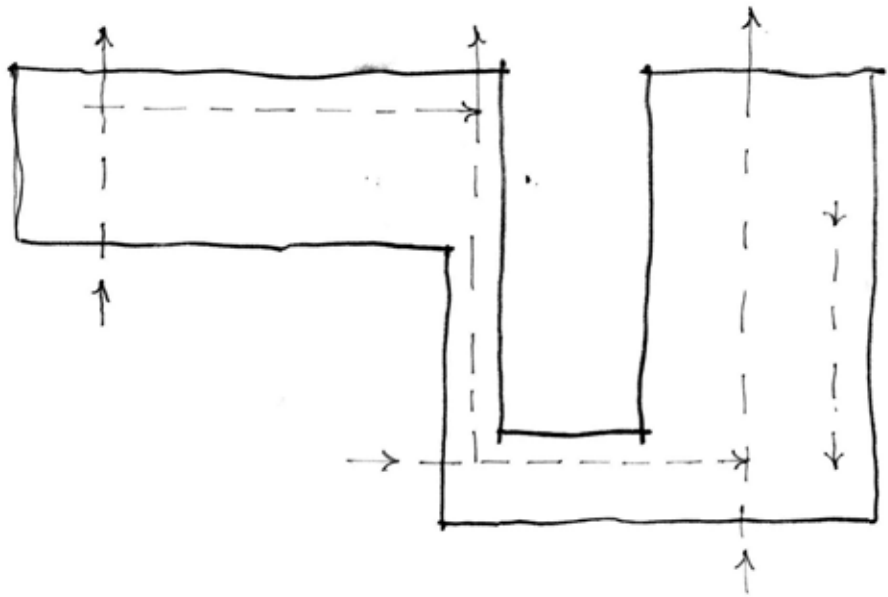
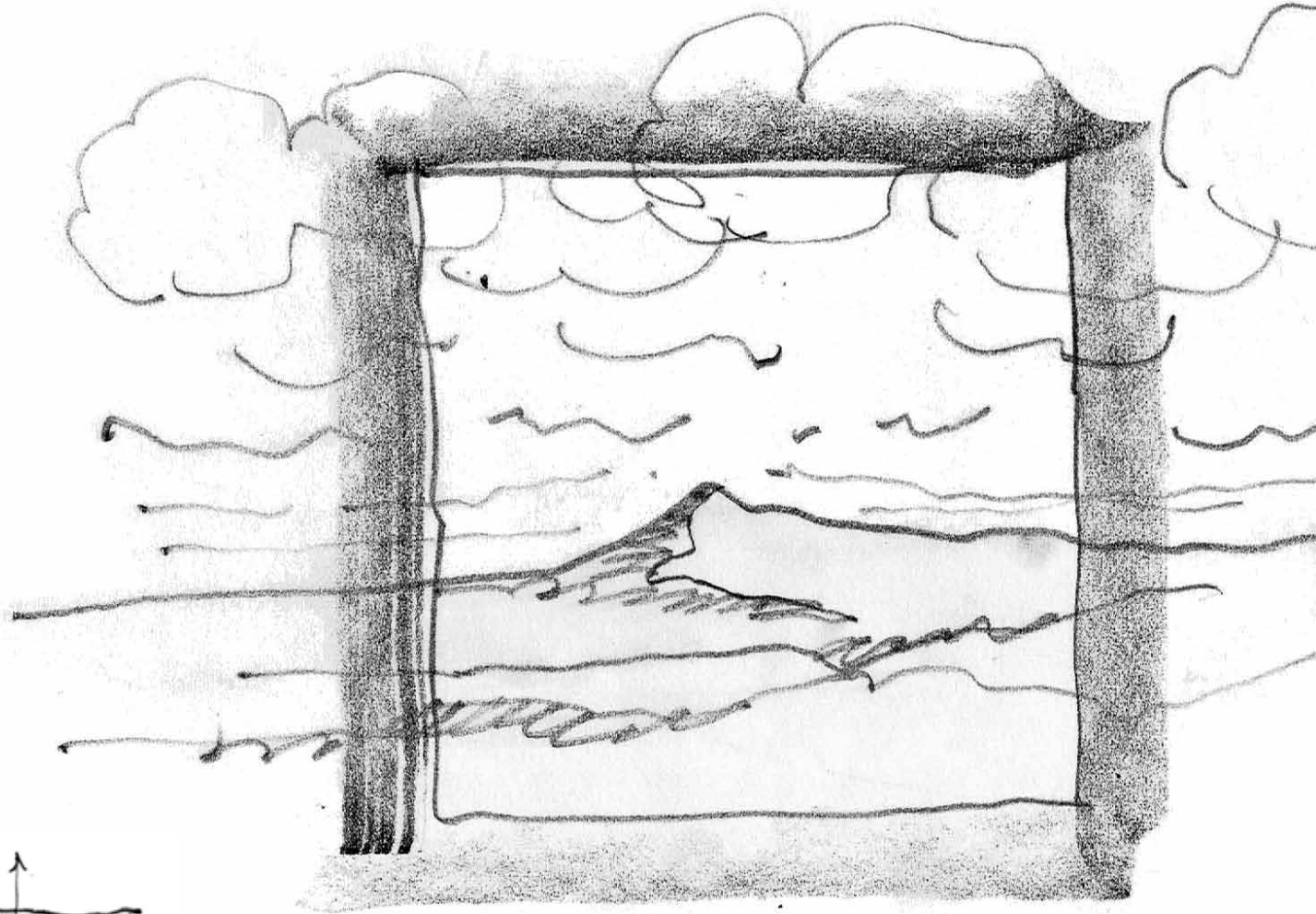




















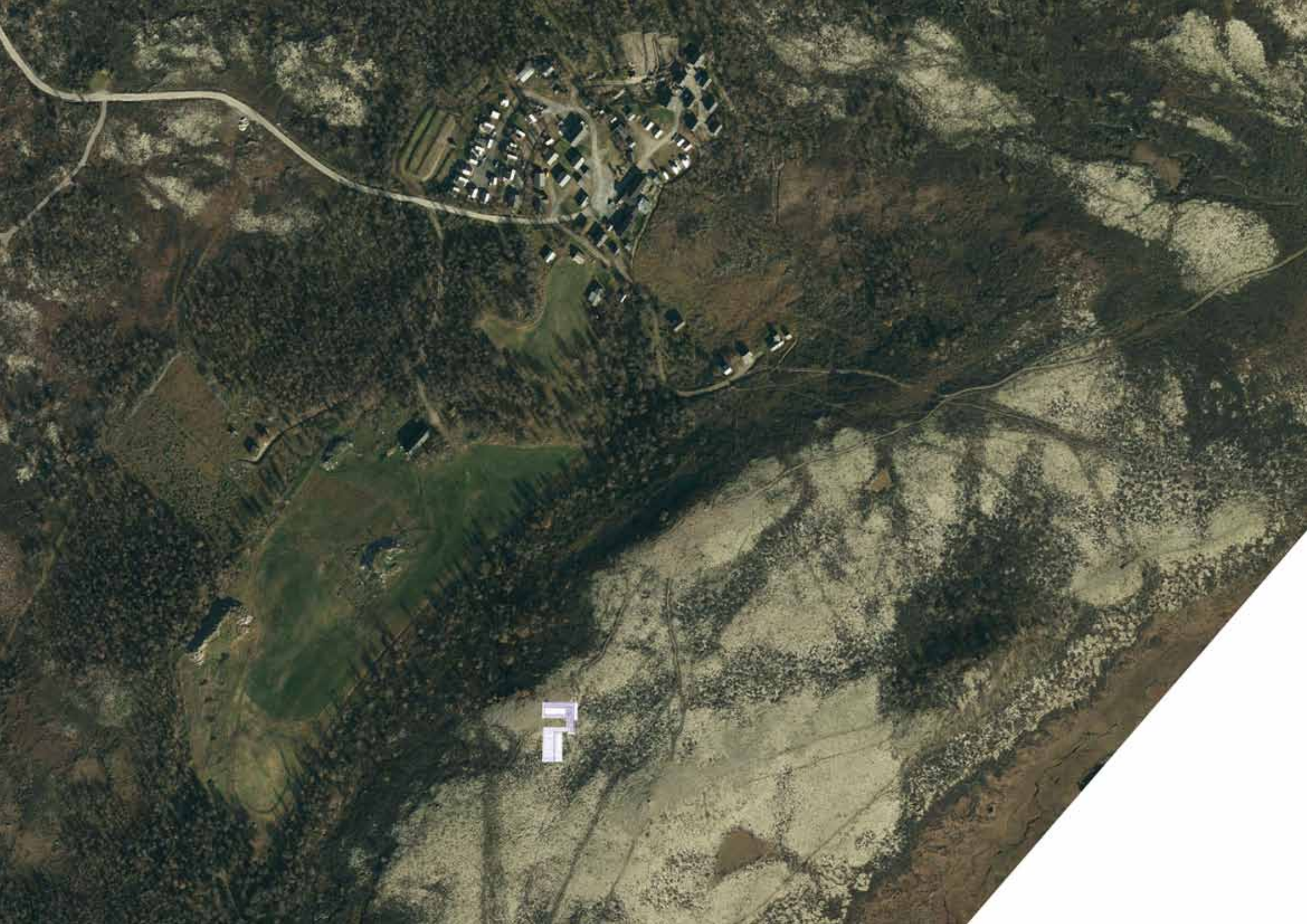




Kapell ved Pilegrimsleden, Trygve E. Rosenvinge, 2013

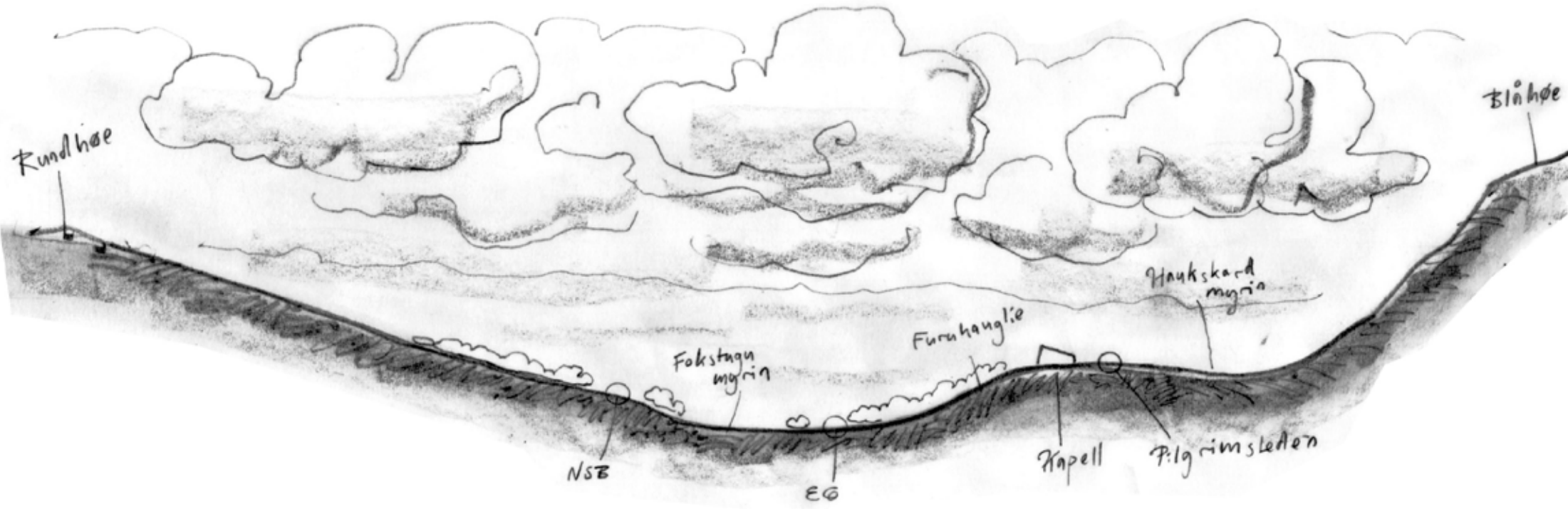
Del III

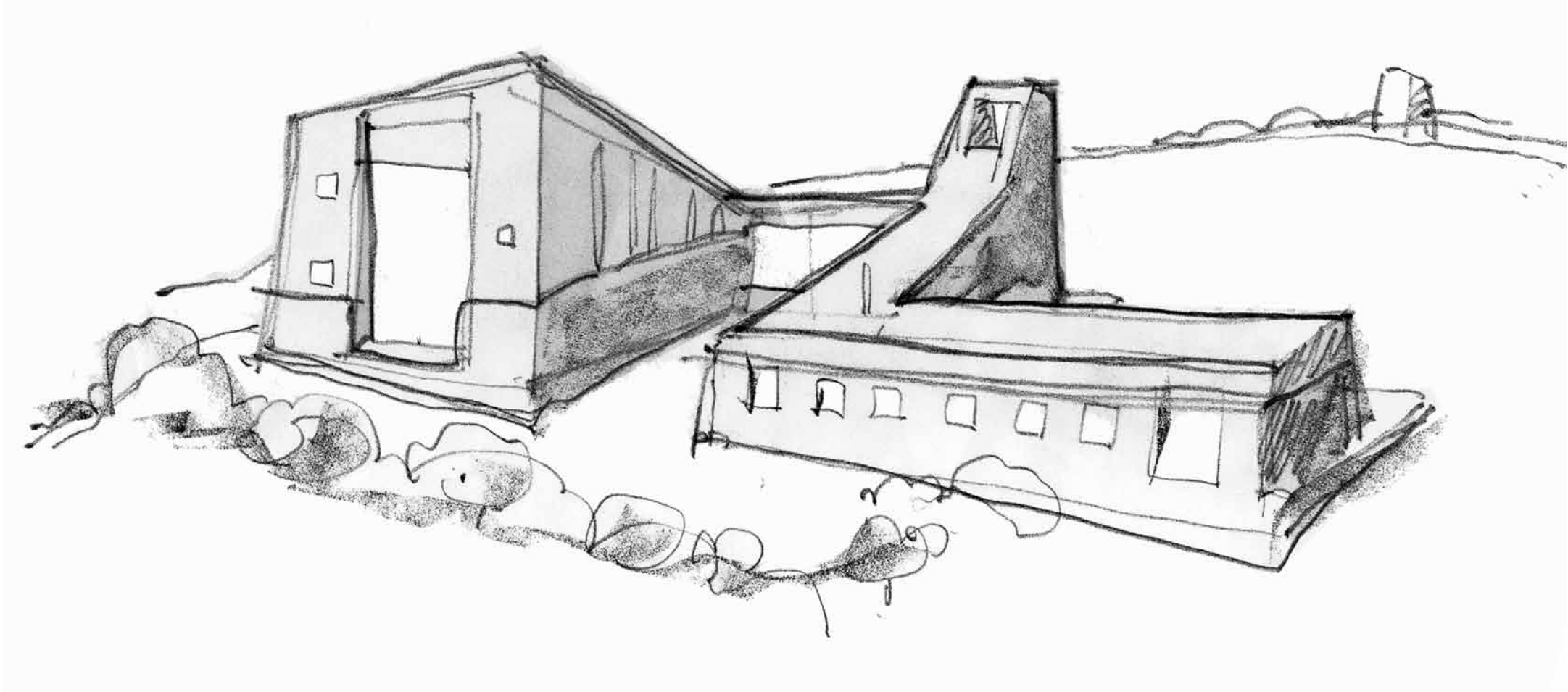
Resultat, kapell

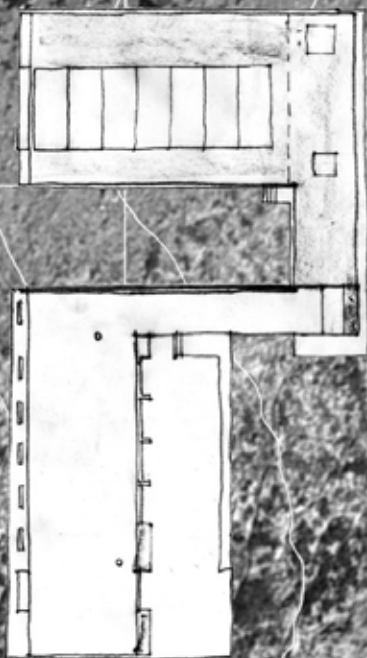


kapellsted









Pilegrimsleden





