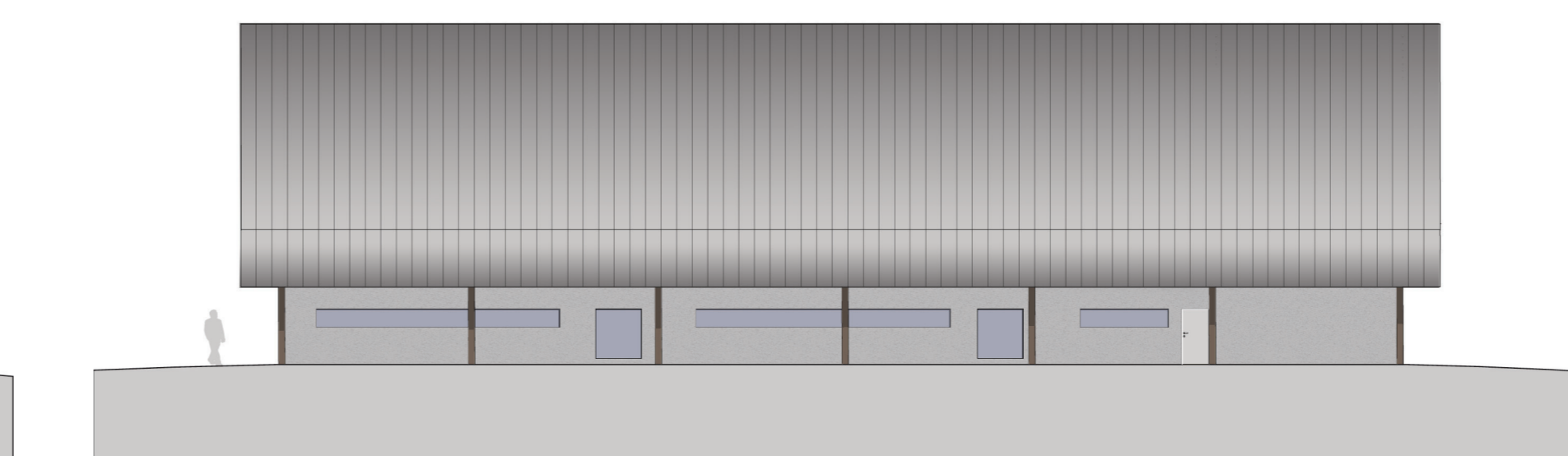
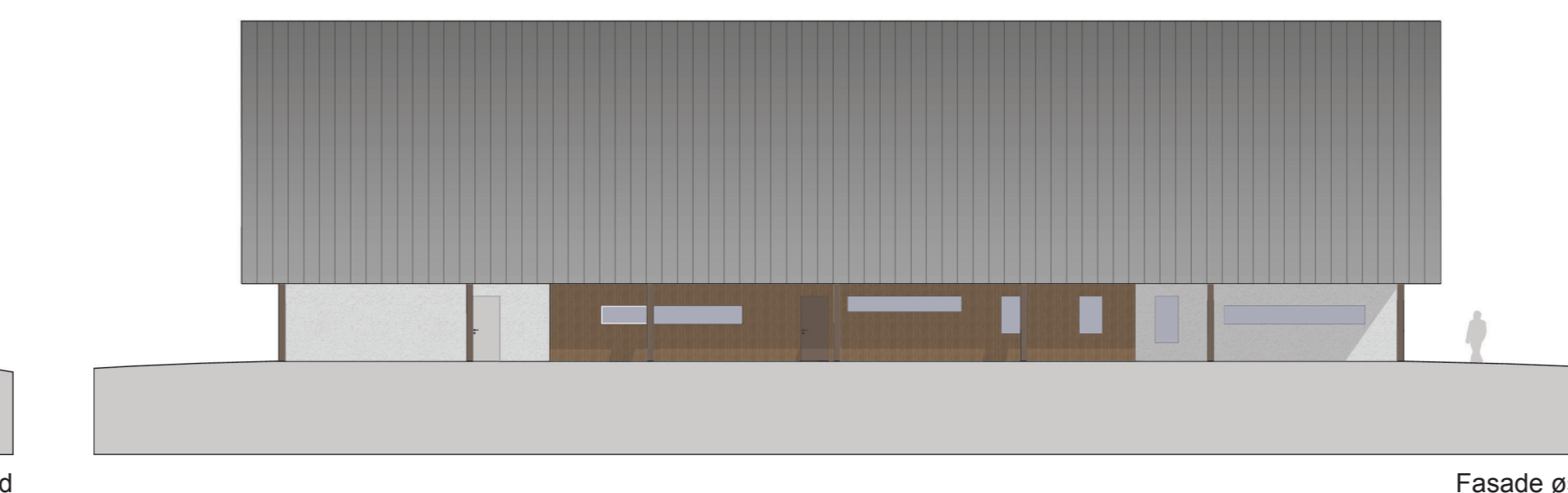
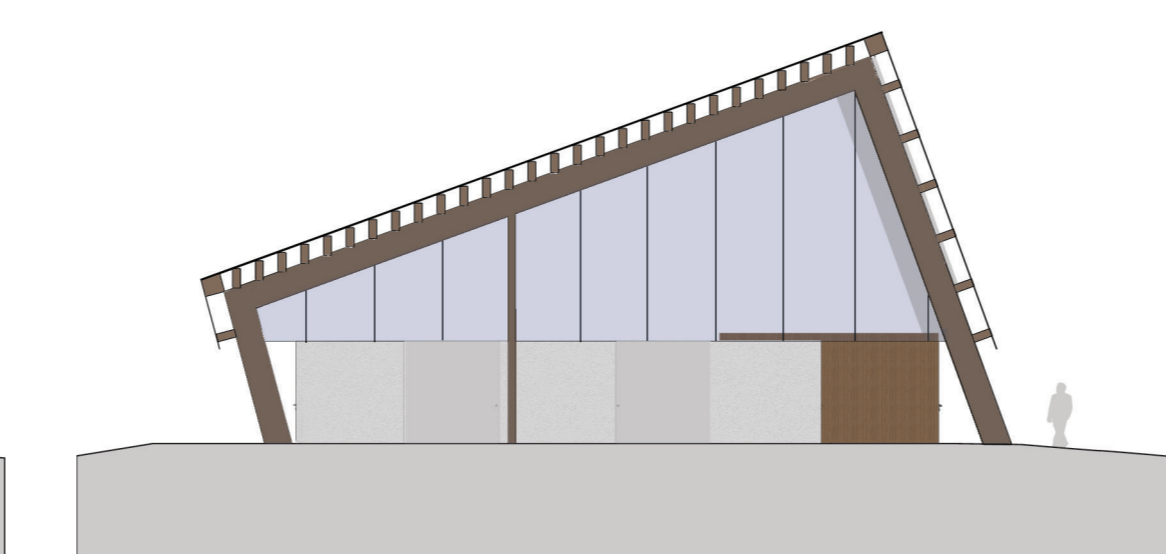
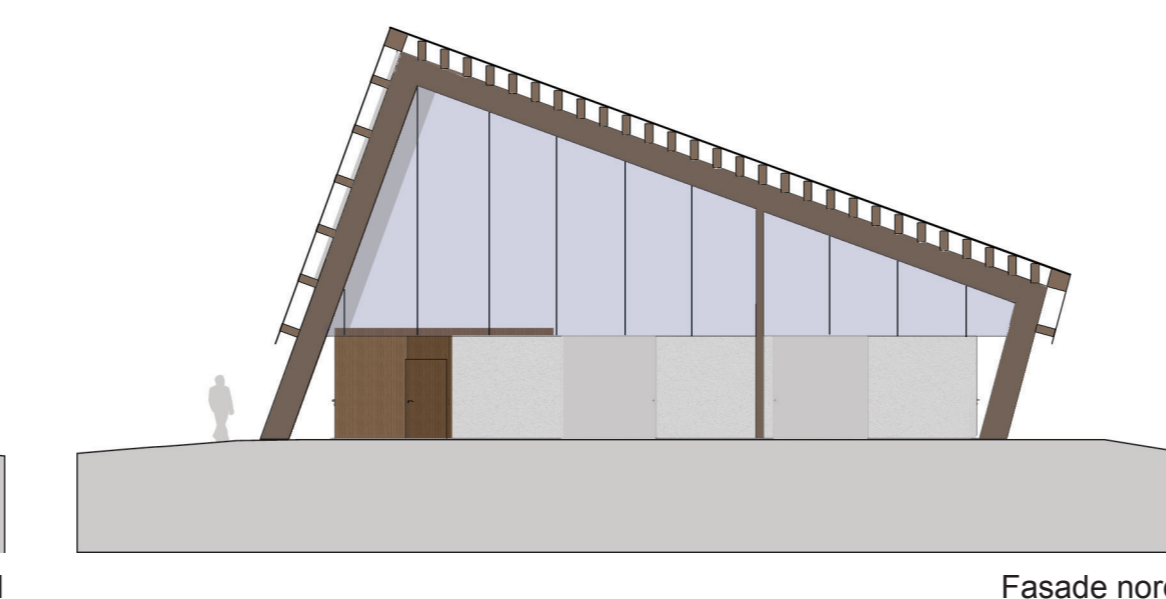
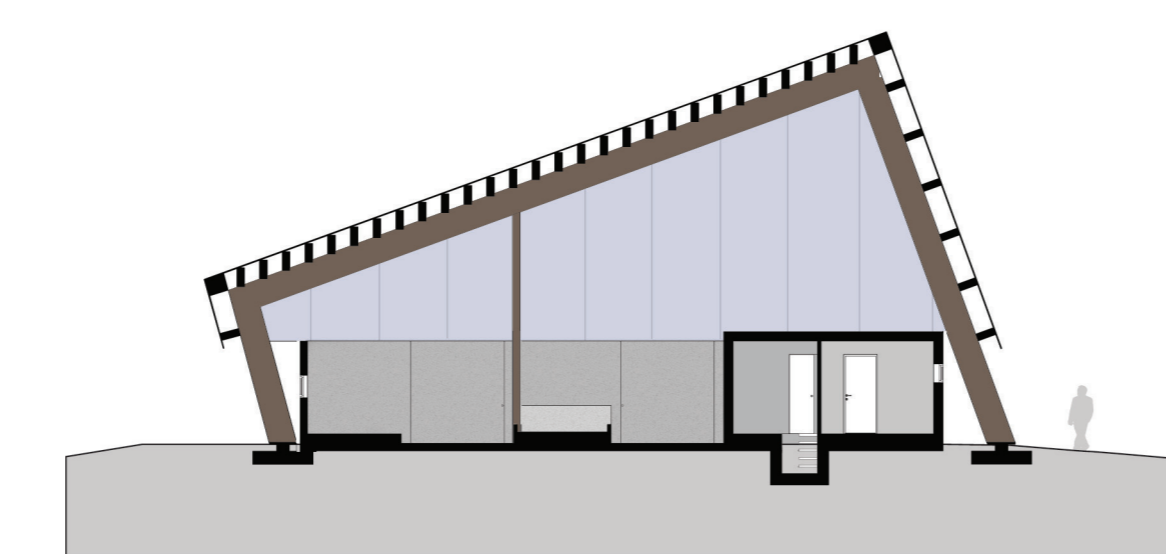
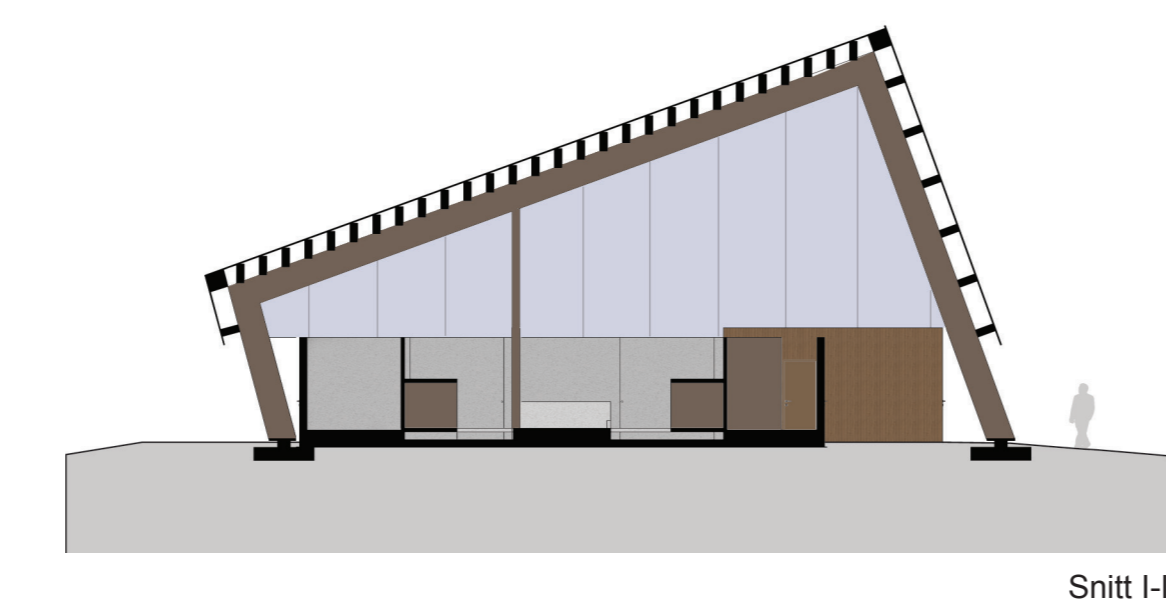
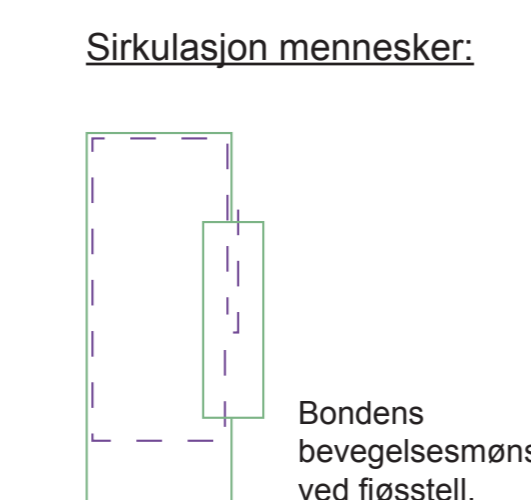
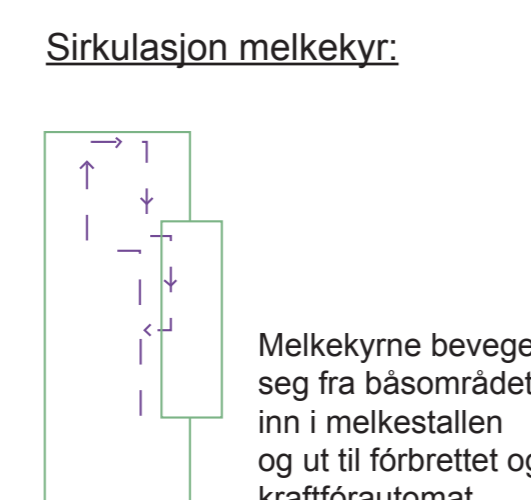
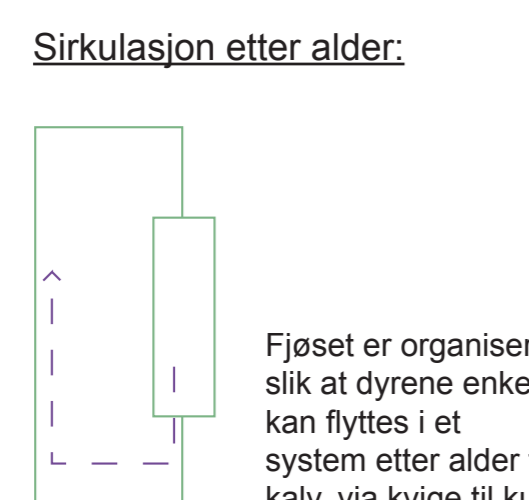
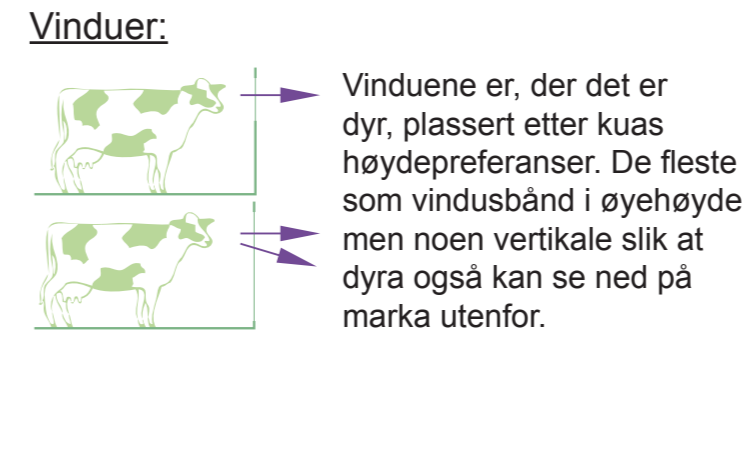
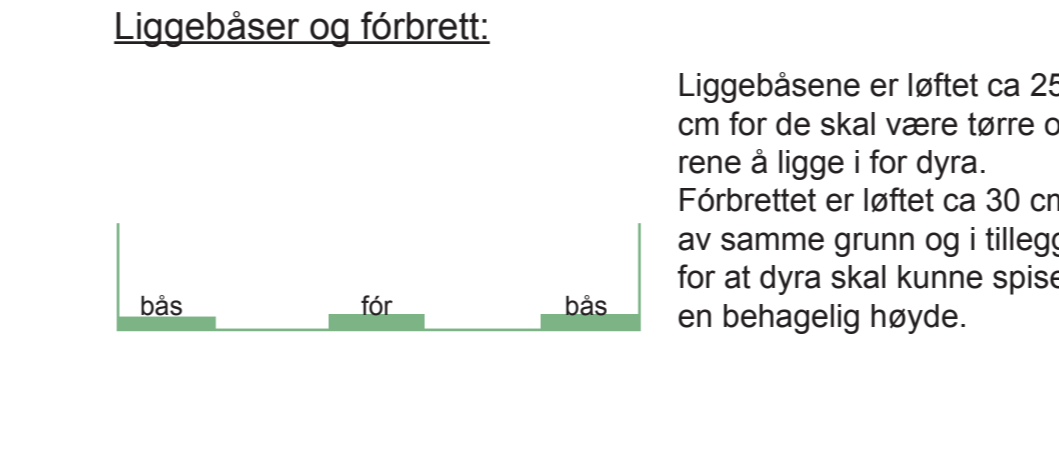
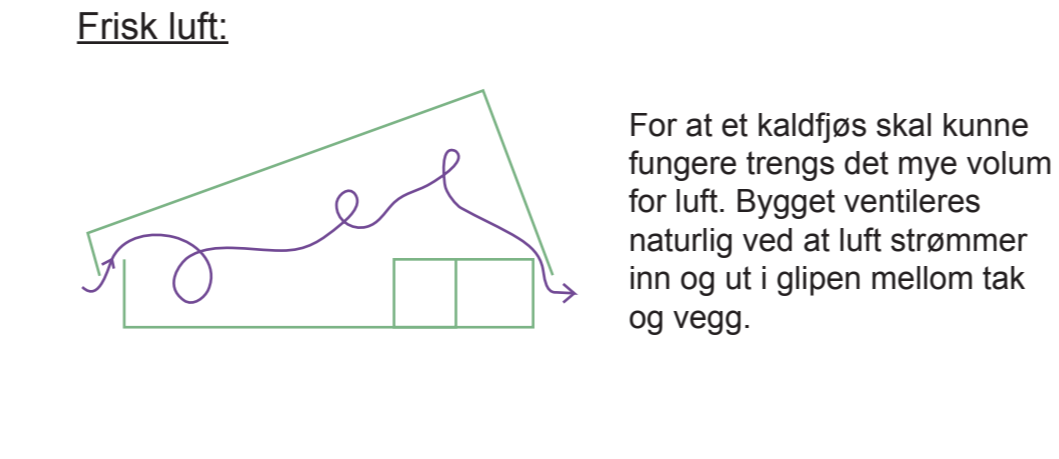
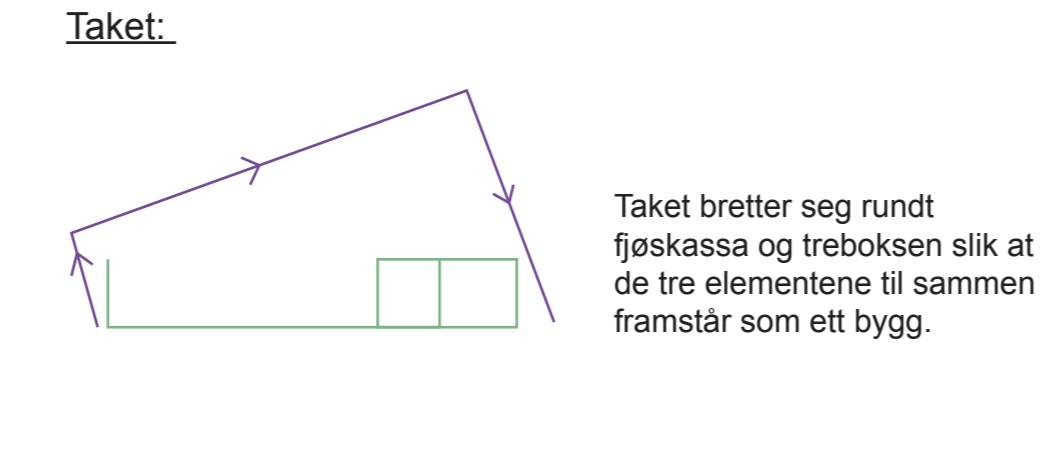
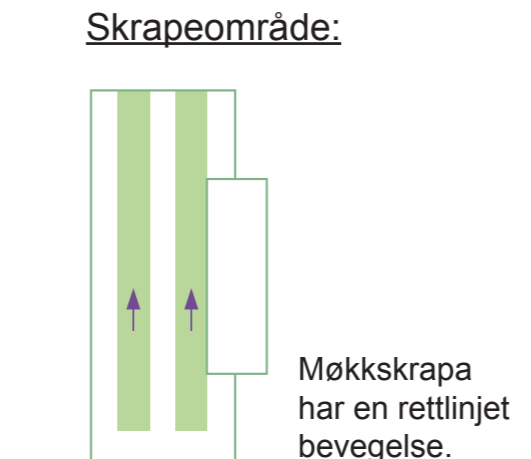
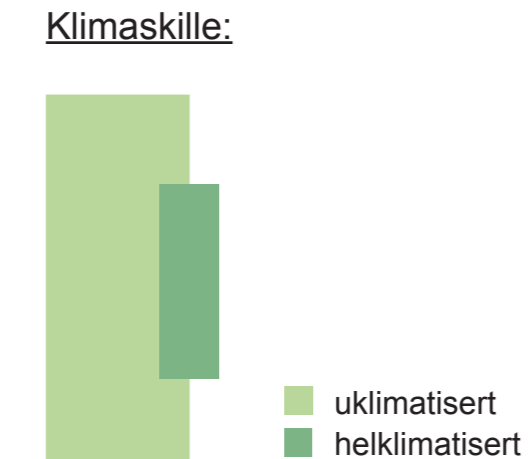
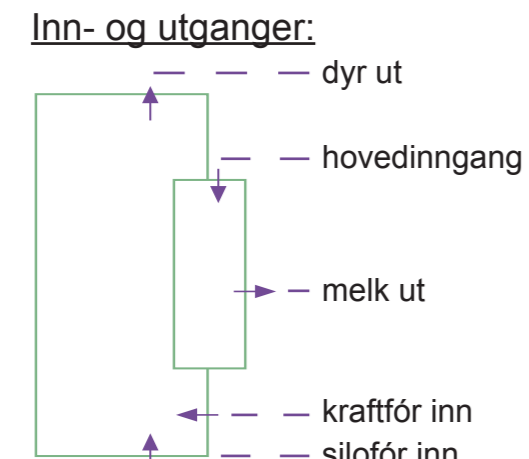
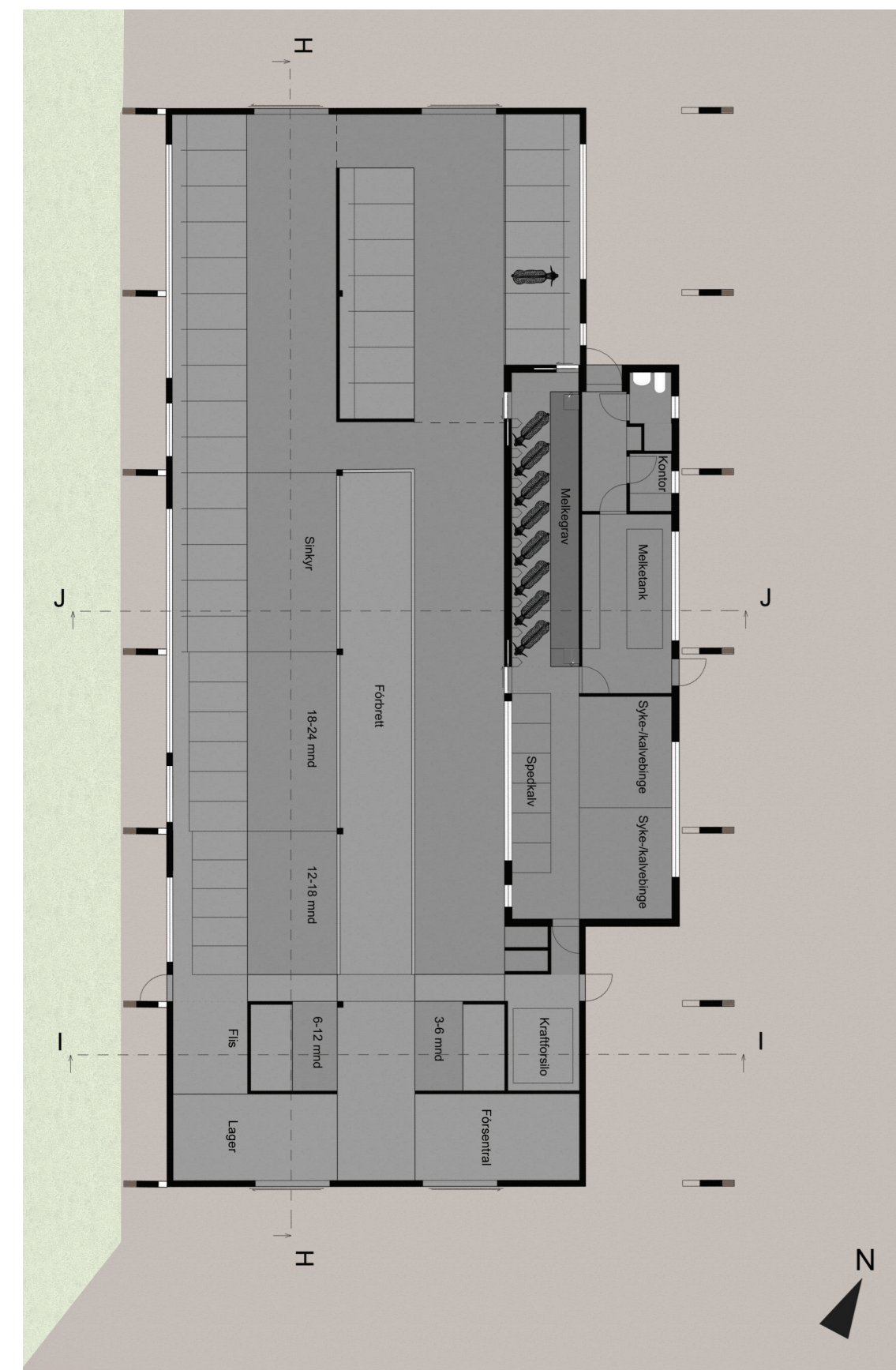


DRIFTSBYGNINGEN



Referansebygg:

Det første bildet viser en tradisjon om den tunge fjøskassa. Til høyre, et prosjekt fra Chile med et luftig, omfavnende tak.



Bilde 1: Kjelvik husmannsplass, Nordland

Bilde 2: "Los Leones Stables" Pablo Lamarca & Tomás Swett

