



The role of forest residues in the accounting for the global warming potential of bioenergy

GEOFFREY GUEST*, FRANCESCO CHERUBINI* and ANDERS HAMMER STRØMMAN*

*Department of Energy and Process Engineering, Norwegian University of Science & Technology, Trondheim, Norway

Abstract

Bioenergy makes up a significant portion of the global primary energy pie, and its production from modernized technology is foreseen to substantially increase. The climate neutrality of biogenic CO₂ emissions from bioenergy grown from sustainably managed biomass resource pools has recently been questioned. The temporary change caused in atmospheric CO₂ concentration from biogenic carbon fluxes was found to be largely dependent on the length of biomass rotation period. In this work, we also show the importance of accounting for the unutilized biomass that is left to decompose in the resource pool and how the characterization factor for the climate impact of biogenic CO₂ emissions changes whether residues are removed for bioenergy or not. With the case of Norwegian Spruce biomass grown in Norway, we found that significantly more biogenic CO₂ emissions should be accounted towards contributing to global warming potential when residues are left in the forest. For a 100-year time horizon, the global warming potential bio factors suggest that between 44 and 62% of carbon-flux, neutral biogenic CO₂ emissions at the energy conversion plant should be attributed to causing equivalent climate change potential as fossil-based CO₂ emissions. For a given forest residue extraction scenario, the same factor should be applied to the combustion of any combination of stem and forest residues. Life cycle analysis practitioners should take these impacts into account and similar region/species specific factors should be developed.

Keywords: Bioenergy, Biomass, Carbon Neutral, Climate Change, Forest Residues, Life Cycle Assessment

Received 7 March 2012; revised version received 20 August 2012 and accepted 31 August 2012

Introduction

Bioenergy constitutes roughly 10% and 78% of the world's primary and renewable energy, respectively, while fossil energy makes up close to 80% of our primary energy consumption (Cullen & Allwood, 2010). As we move forward with an effort to replace this fossil energy with renewables, there are active policies around the world calling for significant increases in bioenergy production where most of these policies consider the CO₂ emitted from sustainably growing biomass as climate neutral (EU, 2008; Morgera *et al.*, 2009; Pous, 2009; Beurskens *et al.*, 2011). Attributing zero climate impact potential to such emissions has been widely popularized throughout the recent past (Cherubini & Strømman, 2011). It is the current assumption specified by the intergovernmental panel on climate change (IPCC) when accounting for CO₂ emissions from bioenergy sources, where they state that such emissions should be reported as an information item, but it should

not be included in the national greenhouse emissions account (IPCC 2006). This is to avoid double counting where carbon stock changes are reported in the agricultural, forestry and other land-use sector.

From a life cycle assessment (LCA) perspective, bioenergy systems continue to be analysed in large numbers where a recent article (Cherubini & Strømman, 2011) found that all but one of the 94 studies that they reviewed did not consider climate impact associated to the CO₂ emissions derived from the renewable biomass. In other words, most studies to date are fixed within the carbon neutral-equals-climate neutral paradigm (Guest *et al.*, 2012). This paradigm means that so long as CO₂ emissions are coming from biomass that is assumed to be re-grown within the given biomass rotation period, then the radiative forcing effects due to these emissions can be assumed negligible. This was found to be a sensible assumption for biomass with quick rotation periods (like annual crops), but this simplification does not hold for longer rotation periods especially for boreal forest biomass which have rotation periods commonly hovering around 100 years (Cherubini *et al.*, 2011a).

Recent work has suggested a way to quantify these impacts where they termed and defined the GWP_{bio} (global warming potential) factor (Cherubini *et al.*,

Correspondence: Geoffrey Guest, Norwegian University of Science & Technology, Department of Energy and Process Engineering, Industrial Ecology Programme, Høgskoleringen 5 (E1), 7491 Trondheim, Norway, tel. + 47 735 93988, fax + 47 735 98943, e-mail: geoffrey.guest@ntnu.no

2011a). This factor can be directly multiplied by the CO₂ emissions from a biomass source of given re-growth or rotation period and the result is the equivalent amount of CO₂ that should be accounted for causing GWP. As the LCA methodology and its application continue to grow, such bioenergy studies have gained more and more credence in the policy-making spectrum (Bird *et al.*, 2011; Dandres *et al.*, 2012). Therefore, GWP_{bio} factors need to be applied in such studies to convey a more accurate measure of the climate change impact of a given bioenergy system.

Although the application of these GWP_{bio} factors is quite straight forward, the current literature only provides results for the case where all available biomass is removed. However, one of the most common practices in forestry is to harvest the stem fraction only, and leave the residues on the forest floor to decompose. In some cases, a certain percentage of forest residues are also extracted. Clearly, when residues are left, there are also significant levels of emissions from the decomposition of residual biomass that remains in the harvesting pool that gradually oxidizes as CO₂ to the atmosphere. This is inherent of all bioenergy systems. These emissions should therefore be considered when calculating the climate impacts as a consequence of bioenergy production.

Bioenergy from forestry systems is particularly important when accounting for residual CO₂ emissions. This is mainly due to two reasons. Firstly, a considerable quantity of the biomass that is available from trees is left upon the forest floor to decay via heterotrophic decomposition. Secondly, managed forests generally have relatively long rotation periods and therefore take lengthy periods to sequester the biomass that was felled. Harvesting is an anthropogenic forest disturbance that has been found to significantly influence the biogeochemical interactions between forest and the atmosphere (Fang *et al.*, 2001; Schimel *et al.*, 2001; Kauppi *et al.*, 2006; Masek & Collatz, 2006; Zhao *et al.*, 2009; Liu *et al.*, 2011). In fact, regenerating forests upon such a disturbance have been found to remain as net sources of CO₂ for at least one to two decades after logging and this is largely due to the heterotrophic decomposition of forest residues (FR) left upon the forest floor (Olsson *et al.*, 1996; Yanai *et al.*, 2003; Clark *et al.*, 2004). The time it takes for this net carbon flux to become a net sink depends on the amount of FR extracted. In this sense, a bioenergy system that manages FR with very little FR extraction will in turn have a higher climate impact potential on a unit bioenergy basis than a system that extracts nearly all of the FR that is available.

Here, we present a methodology that extends from an earlier study (Cherubini *et al.*, 2011a) to also include

these residual fuel-based CO₂ emissions. We apply it to the case of Norwegian Spruce (NS) stands in Norway and we consider how the GWP_{bio} factor changes as a function of forest residue extraction efficiency. We present the remainder of the article in the following way. In the methodology section, we first give a brief description of the forest system where a more extensive explanation of the assumptions is given in the supporting information (SI) and then we explain the equations for calculating the GWP_{bio} factors. The results section follows with an illustration of the CO₂ decay and cumulative radiative forcing dynamics where the associated GWP_{bio} factors are tabularized. We then end with a discussion of certainty, implications and recommendations for applying and developing these factors.

Materials and methods

Forest system and residue decomposition

A region of Norway that is central to the forest industry (Hedmark and adjacent counties) was chosen for this forestry system analysis. The managed forest stand is assumed to be even aged and extracted in a single clear-cut after a 100-year rotation period. The same species is assumed to be immediately re-grown after harvest and an equivalent amount of carbon that was clear-cut (left in forest and extracted) is assumed to be sequestered over the rotation period. NS (*Picea abies*) stands were considered in this study for their dominance in Norway and in addition to their suitability for stump/below-ground residue extraction. The normalized growth curve for NS in all scenarios was assumed to follow the Schnute function (Schnute, 1981) as was applied in Cherubini *et al.*, 2011b. Lehtonen *et al.* (2004) expansion factors were applied to determine the mass of all tree components; although these expansion factors are based on similar yet Finnish boreal forests, several Norwegian-based studies have utilized them as being applicable equations for Norwegian conditions (de Wit *et al.*, 2006; Rørstad *et al.*, 2010; Bright *et al.*, 2011). To estimate the biogenic CO₂ emissions associated to the fraction of FR that remained upon the forest floor, we used the dynamic soil carbon model Yasso07 (Tuomi *et al.*, 2008, 2009). Nine FR extraction scenarios (see Table 1) were considered where FR component specific decomposition profiles (see Fig. 1) were determined with Yasso07. (Please refer to the supporting information for further details into the FR decomposition and the NS re-growth model used).

As seen in Table 1, nine FR extraction scenarios are considered where mass percentages of each FR component were calculated using Lehtonen *et al.* (2004) expansion factors and decomposition profiles were simulated using Yasso07. Therefore, the decomposition rate of the FR composition remaining upon the forest floor is FR component specific, and the aggregate decomposition of remaining FR components is sensitive to changing the FR extraction scenario. We consider the above nine FR extraction scenarios to gain a sense of how the GWP_{bio} factor changes with varying FR removal fraction.

Table 1 FR extraction scenarios where % AGR is the percentage of above-ground residues removed and % BGR is the percentage of below-ground residues removed

| FR components | 1. 0% AGR/ 0% BGR | 2. 25% AGR/ 0% BGR | 3. 50% AGR/ 0% BGR | 4. 75% AGR/ 0% BGR | 5. 75% AGR* / 0% BGR | 6. 100% AGR/ 0% BGR | 7. 50% AGR* / 50% BGR | 8. 75% AGR* / 75% BGR | 9. 100% AGR* / 100% BGR |
|-----------------------|----------------------|-----------------------|-----------------------|-----------------------|-------------------------|------------------------|--------------------------|--------------------------|----------------------------|
| Tops | 0% | 25% | 50% | 75% | 75% | 100% | 50% | 75% | 100% |
| Live branches | 0% | 25% | 50% | 75% | 75% | 100% | 50% | 75% | 100% |
| Dead branches | 0% | 25% | 50% | 75% | 75% | 100% | 50% | 75% | 100% |
| Foliage | 0% | 25% | 50% | 75% | 25% | 100% | 25% | 25% | 100% |
| Stumps | 0% | 0% | 0% | 0% | 0% | 0% | 50% | 75% | 100% |
| Coarse roots | 0% | 0% | 0% | 0% | 0% | 0% | 50% | 75% | 100% |
| Small roots | 0% | 0% | 0% | 0% | 0% | 0% | 25% | 38% | 100% |
| Fine roots | 0% | 0% | 0% | 0% | 0% | 0% | 0% | 0% | 100% |
| Above-ground FR | 0% | 25% | 50% | 75% | 59% | 100% | 42% | 63% | 100% |
| Below-ground FR | 0% | 0% | 0% | 0% | 0% | 0% | 50% | 75% | 100% |
| Total FR (ω) | 0% | 15% | 31% | 46% | 37% | 61% | 45% | 65% | 100% |

*environmental guideline of 25% foliage extraction.

Radiative forcing

Cherubini *et al.* (2012) derived the following equation to estimate the atmospheric decay of a unit of CO₂ emissions distributed over time and with subsequent re-growth that immediately follows.

$$f(t)_i = \int_0^t e(t')_i y(t-t') dt' - \int_0^t g(t')_i y(t-t') dt'. \quad (1)$$

Here, $f(t)$ is the change in atmospheric CO₂ concentration caused by the biogenic CO₂ fluxes of the biomass system under study, where $e(t')$ is the unit of biogenic CO₂ emissions distributed over time, $y(t)$ is the impulse response function (IRF) for CO₂ in the atmosphere as defined by the Bern 2.5CC model (Forster *et al.*, 2007), and $g(t)$ is the normalized growth rate of the sustainably grown biomass. $e(t')$ is the function representing the emission from biomass combustion and in this case, we simulate it through a delta function (i.e. a single pulse).

Equation (1) was defined for the complete removal of all the available biomass in the resource pool. For consideration of the dynamics related to removing or leaving FR, some modifications are necessary, especially in the second term, $g(t)$, which must contain the oxidation rate of the FR left to decompose.

$$f(t) = y(t) - \int_0^t \kappa_a [g(t') - \kappa_b FR(t')] y(t-t') dt' \quad (2)$$

The first term $y(t)$ is obtained by assuming that the biogenic CO₂ emission occurs as a single pulse (see Cherubini *et al.*, 2011a), and $FR(t')$ is the curve describing the unit oxidation rate of the residues left in the forest. The resulting net in-forest carbon flux is then normalized by multiplying it by the factor κ_a . The κ_a and κ_b coefficients are defined as follows:

$$\kappa_a = \frac{1}{1 - \kappa_b} \text{ where } \kappa_b = (1 - \omega)\phi \quad (3)$$

where ω is the FR extraction efficiency or total carbon mass of forest residues extracted divided by the total carbon mass of forest residues available in the resource pool. The ϕ factor represents the fraction of total carbon biomass available (stems and FR) that is considered to be FR. On the basis of the expansion factors (Lehtonen *et al.*, 2004), we used a value of 0.47 where a sensitivity analysis around this parameter can be found in the SI. The scaling coefficient κ_b therefore represents the normalized mass of residues left to decompose according to the decay rate $FR(t')$.

Figure. 1 shows the normalized growth rate, $g(t')$, and the normalized FR decomposition rates, $FR(t')$, over a 100-year time span for each of the nine FR extraction scenarios. There is a slight variation in FR decomposition rate between the different FR extraction scenarios. The reason for this difference is due to the changing proportions of FR components in each extraction scenario (i.e. foliage, branches, tops, stumps and roots) that remain upon the forest floor after harvest. The $FR(t')$ profile for each specific FR extraction scenario was then used in Eqn (2).

An implication of using Eqn (2) to represent the atmospheric decay of biogenic CO₂ from an energy system is that both stem

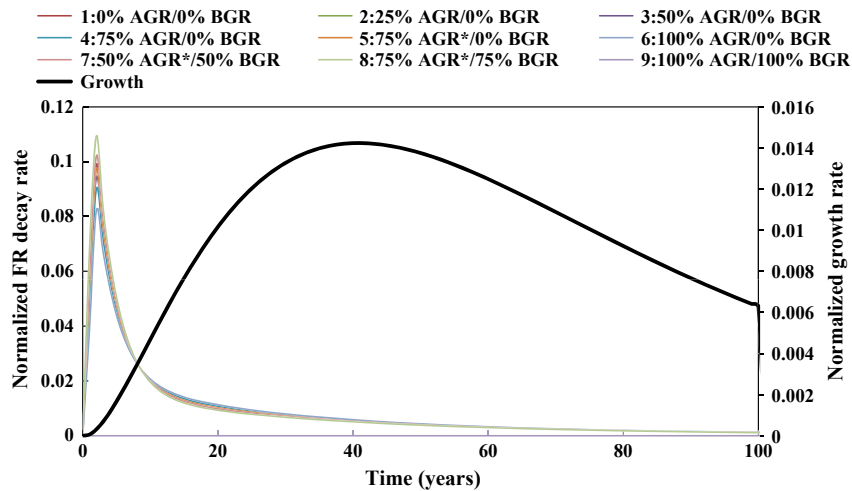


Fig. 1 The normalized growth rate, $g(t)$, and the normalized FR decomposition curves corresponding to the different FR extraction scenarios, $FR(t)$, considered in this study (*: environmental guideline of 25% foliage extraction).

and FR utilized for bioenergy will have the equivalent decay profile, and therefore, the same associated cumulative radiative forcing (CRF).

Aligning with current LCA methodology, the GWP metric was used to calculate the GWP_{bio} factor.

$$GWP_{bio} = \frac{AGWP_{bioCO_2}}{AGWP_{CO_2}} = \frac{C_0 \int_0^{TH} \alpha_{CO_2} f(t) dt}{C_0 \int_0^{TH} \alpha_{CO_2} y(t) dt} \quad (4)$$

Here, the absolute global warming potential ($AGWP$), or CRF potential, of a given pulse of biogenic CO_2 due to bioenergy production is divided by the $AGWP$ of an equivalent pulse of fossil CO_2 . C_0 is considered to be the magnitude of the emission pulse (kg CO_2 for example) and α_{CO_2} is the radiative forcing efficiency of CO_2 [$1.81E-15 \text{ W m}^{-2} \text{ kg}^{-1} \text{ CO}_2$ (Forster *et al.*, 2007)]. The resulting fraction, or GWP_{bio} factor, is the portion of biogenic CO_2 emissions that should be attributed to causing climate change in which the resulting value is equivalent to the same amount of fossil-based CO_2 emissions. Eqn (2) can be inserted into Eqn (4) to calculate the GWP_{bio} factors for the different cases of forest residues removal rates, ω . If ω is equal to one, or 100% of the FR is extracted, then Eqn (2) will simplify back to Eqn (1). The variables used in the equations are summarized in Table 2.

Results

In Fig. 2a, the atmospheric CO_2 decay curves of the nine FR of extraction scenarios are presented along with the decay of CO_2 from fossil fuel combustion. The nine scenarios were chosen for their extreme cases and their likelihood of occurring in industry. The initially high rate of FR decomposition leads to a more gradual decay of the normalized biogenic CO_2 pulse from the atmo-

sphere. As a consequence, more radiative forcing accumulates when a higher fraction of the FR is left upon the forest floor as can be seen in Fig. 2b.

This is sensible since additional CO_2 emissions from the forest are attributed to the unit CO_2 pulse emission and the bioenergy conversion site. In fact, as seen in Fig. 2b, several of the unit biogenic CO_2 pulse scenarios create more CRF than the unit fossil CO_2 pulse in the short-term. However, since an equivalent amount of the biogenic CO_2 being emitted is sequestered by the sustainable re-growth of the biomass, the CRF of all unit biogenic CO_2 pulse scenarios soon becomes less than that of the unit fossil CO_2 pulse.

The GWP_{bio} is the ratio of the area under the CRF curve of the given FR extraction scenario divided by the area under the CRF curve due to a unit pulse of CO_2 from a fossil source at a given point in time (see (Cherubini *et al.*, 2011a) for more details). In Table 3, the GWP_{bio} factors tell us the cumulative climate impact potential of a unit pulse of biogenic CO_2 at conversion plant relative to a unit pulse of fossil CO_2 over a given TH. According to Eqn (2), the climate impact due to the unit CO_2 pulse emission for bioenergy directly refers to the biomass combusted, and would be equally applied when either stems or forest residues are burnt. The bioenergy CO_2 emission pulse could be any combination of stem wood and FR wood. All combinations will result in the same GWP_{bio} factors as long as the FR extraction efficiency is assumed to be the same. The resulting value will be the CO_2 equivalents (CO_{2eq}) that should be accounted towards contributing to GWP over a given TH.

For a TH of 20 years, results indicate that most FR extraction scenarios lead to the unit biogenic CO_2 pulse

Table 2 List of symbols used in the equations with definitions and dimensions

| Symbol | Definition | Dimensions |
|-------------|---|---|
| GWP_{bio} | Biogenic CO ₂ GWP characterization factor | kg CO _{2eq.} per kg biogenic CO ₂ emissions |
| $f(t)$ | Biogenic CO ₂ decay profile | Normalized to one |
| $e(t)$ | Distributed biogenic CO ₂ emission profile | Normalized to one |
| $y(t)$ | Fossil CO ₂ decay profile | Normalized to one |
| $g(t)$ | Re-growth rate of biomass system | Normalized to one |
| $FR(t)$ | Decomposition profile of FR left in forest | Normalized to one |
| κ_a | Total biomass clear-cut normalized to a unit biomass extracted | Unitless: kg biomass felled/re-grown per kg biomass extracted |
| κ_b | Fraction of FR left in forest normalized to total biomass available | Unitless: kg FR left per kg biomass available |
| ω | FR extraction efficiency | Unitless: kg FR extracted per kg FR available |
| ϕ | Fraction of biomass that is in the form of FR | Unitless: kg FR per (kg FR + kg stem wood available) |

creating more GWP than a unit CO₂ fossil pulse. This is for all cases where the GWP_{bio} factor is larger than one. As the TH increases, the unit biogenic CO₂ pulse scenarios become significantly better than the fossil CO₂ pulse. For example, removal of 75% AGR and 0% of BGR would lead to 51% of the GWP created by an equivalent emission pulse of fossil CO₂ when a TH of 100 years is applied.

However, there is a large variance between the FR extraction scenarios. In the two extreme cases—0% FR extracted ($GWP_{bio,TH=100} = 0.62$) and 100% FR extracted ($GWP_{bio,TH=100} = 0.44$)—around 18 more percentage points of CO₂ emissions from the bioenergy conversion site should be accounted for contributing to climate change if a TH of 100 years is considered. In this sense, a greater level of climate change mitigation can be achieved the more FR is extracted from the forest floor. When the GWP_{bio} factors are calculated at a TH of 500 years, the variance between the FR extraction scenarios significantly dampens and very little variance in the GWP_{bio} factors is found across the FR extraction scenarios as can be seen in Table 3.

Discussion

Bioenergy systems that rely on biomass with long-rotational re-growth periods have been found to significantly impact the climate even when carbon-flux neutral biogenic-sourced CO₂ emissions are assumed (Cherubini *et al.*, 2011a). This work has shown that CO₂ emissions from biomass inherent of the bioenergy system that is left to decompose within the biomass resource pool is also an important emission source to consider. Depending on the fraction of available FR that is extracted, these residual CO₂ emissions in the forest can significantly increase the GWP_{bio} factor that should be used for a given bioenergy system. An equivalent amount of all CO₂ being emitted in the presented cases was assumed to grow back sustainably and therefore no

direct (Fargione *et al.*, 2008) or indirect (Searchinger, 2010) land-use change was accounted for; however, these two issues may be important considerations in a given LCA study for which the GWP_{bio} methodology (Cherubini *et al.*, 2011a) could be applied.

Some LCA literature has suggested that the climate impacts due to FR should be disregarded because FR is viewed as a waste stream that would otherwise be left to decompose if it were not utilized for bioenergy (Higo & Dowaki, 2010; Kravanja *et al.*, 2012; Pa *et al.*, 2012). However, this work takes on the viewpoint that FR is a forest co-product (McKechnie *et al.*, 2010; Whittaker *et al.*, 2011). If the rotation period and FR extraction efficiency is the same for the harvested stem and FR, then the given GWP_{bio} factors will be equivalent regardless of whether the energy plant is combusting AGR, BGR, stem wood or in any combination thereof. Also, although one could alternatively disaggregate the CO₂ pulse emission at the energy plant and the distributed CO₂ emission profile upon the forest floor, and treat these emissions as separate inventory items, the ease of applying a single GWP_{bio} factor that covers both emission sources will clearly streamline accounting procedures.

Procurement losses are also significant in certain bioenergy systems (Forsberg, 2000) and such emissions could technically be incorporated into the GWP_{bio} factor while maintaining its normalization to a unit CO₂ pulse at the energy conversion site. However, from an LCA perspective, we think it is more sensible to treat the procurement losses as a separate process or inventory item in the value chain while applying a GWP_{bio} factor that does not change as a function of procurement loss.

The GWP_{bio} factor can then be seen as a straight forward metric that can be used from either an attributional or a consequential perspective. They are fully consistent with the GWP factors as defined by the IPCC and that are commonly applied in LCA.

However, such characterization factors are simplistic in terms of assuming climate conditions similar to

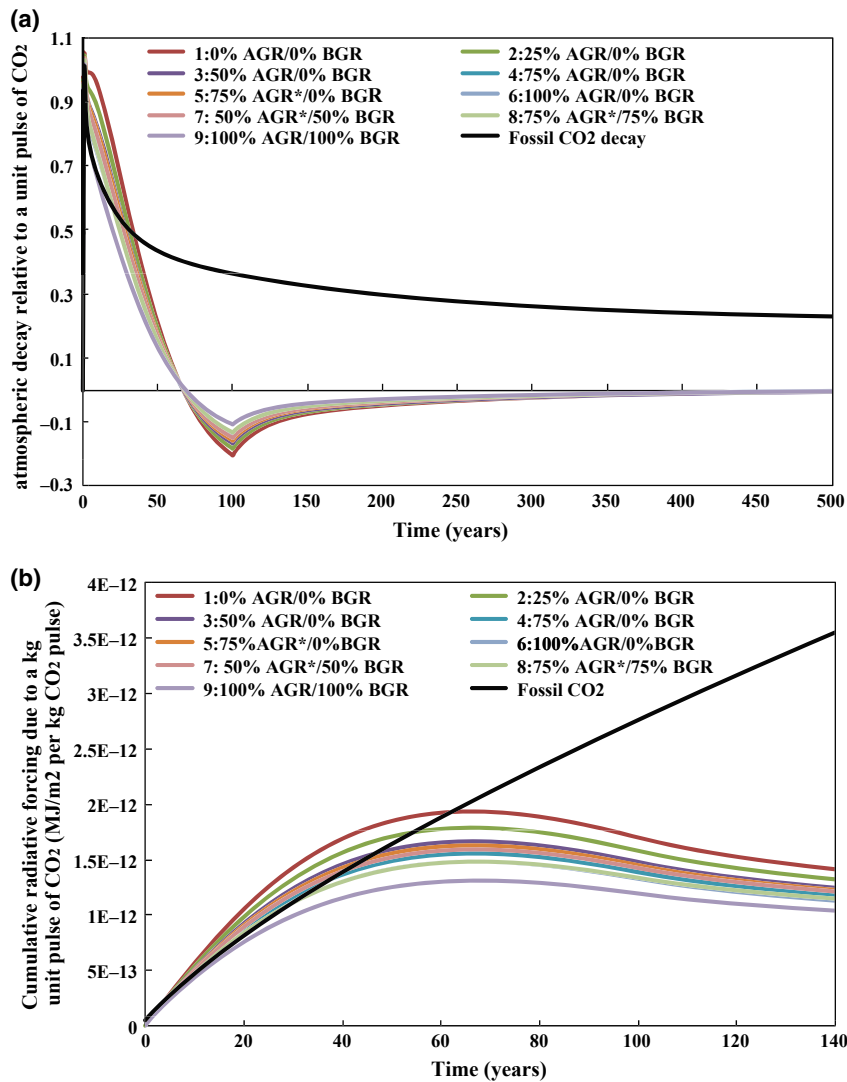


Fig. 2 (a) Atmospheric CO₂ decay profiles due to a unit CO₂ pulse of bioenergy at conversion site with consideration of CO₂ emissions due to decomposition of the fraction of forest residues that remain upon the forest floor. (b) Associated cumulative radiative forcing. The nine FR extraction scenarios are considered, along with a unit fossil CO₂ emission pulse. (*: environmental guideline of 25% foliage extraction).

recent history simulated over a 500 year span along with a constant background atmospheric CO₂ concentration of 378 ppm (Forster *et al.*, 2007). As atmospheric CO₂ concentration increases, changes in biomass growth rate, regional temperature and precipitation are likely to increase in the boreal region (Kellomäki *et al.*, 2008). This would also likely increase the marginal atmospheric decay rate of CO₂ and yet decrease the marginal radiative efficiency of CO₂ (Sathre & Gustavsson, 2011). Therefore, the climatic changes due to increasing atmospheric CO₂ concentrations and other climate perturbations in the atmosphere that may occur in the future are not accounted for. If this were taken into account, then FR decomposition rates would likely increase slightly. This may also change the resulting atmospheric decay

curve or IRF of a fossil CO₂ pulse. The GWP_{bio} factors are not foreseen to change significantly in terms of changing IRF since both the numerator and denominator are a function of the same IRF.

The level of FR extraction may alter the forest re-growth profile. Although FR removal has been found to reduce subsequent forest growth (Zabowski *et al.*, 1994; Helmisaari *et al.*, 2011), FR removal can also assist with efficient planting of seedlings (Veli-Matti, 2006) and fertilizer compensation has been found to have significant net climate cooling benefits (Eriksson *et al.*, 2007; Sathre *et al.*, 2010). Due to the lack of empirical research on these tradeoffs, we maintained the same re-growth profile for all FR extraction scenarios. Forest soil disruption associated with above-ground FR and stump/coarse

Table 3 GWP_{bio} characterization factors for 20-, 100- and 500- year time horizons for each of the nine FR extraction scenarios considered.

| Scenario | 20-year TH | 100-year TH | 500-year TH |
|-------------------|------------|-------------|-------------|
| 0% AGR/0% BGR | 1.30 | 0.62 | 0.09 |
| 25% AGR/0% BGR | 1.22 | 0.58 | 0.09 |
| 50% AGR/0% BGR | 1.15 | 0.54 | 0.09 |
| 75% AGR/0% BGR | 1.09 | 0.51 | 0.08 |
| 75% AGR*/0% BGR | 1.13 | 0.53 | 0.09 |
| 100% AGR/0% BGR | 1.05 | 0.49 | 0.08 |
| 50% AGR/50% BGR | 1.11 | 0.52 | 0.09 |
| 75% AGR/75% BGR | 1.06 | 0.49 | 0.08 |
| 100% AGR/100% BGR | 0.96 | 0.44 | 0.08 |

*environmental guideline of 25% foliage extraction.

root removal may lead to soil carbon permanently lost to the atmosphere. Unfortunately, empirical research on the magnitude of these emissions is few in number (Jandl *et al.*, 2007; Walmsley & Godbold, 2010). However, a simplified analysis sensitive to percentage of soil carbon disturbed that is lost permanently due to BGR extraction can be found in the SI. This sensitivity analysis suggests that relatively small permanent soil carbon losses due to BGR extraction means that maximizing FR extraction may not lead to the least radiative forcing FR extraction scenario.

The Yasso07 model has been shown to give unbiased estimates for the decomposition of woody and non-woody litter (Tuomi *et al.*, 2009). The decomposition of FR in this study was found to fit well with past work that utilized the Yasso07 model (see SI for illustrative comparison) (Repo *et al.*, 2011, 2012). Despite the uncertainties, it is our assessment that the current estimates are reliable enough to demonstrate the magnitude of radiative forcing associated with producing bioenergy from harvested biomass in boreal coniferous forests and the notable differences between the extraction scenarios. As more empirical results materialize, results can easily be updated.

The CO_2 emissions due to biomass residual decomposition within the biomass resource pool are foreseen to be of particular importance in forest bioenergy systems and quite negligible for short rotation systems like annual energy crops. Regional meteorological conditions play a key role in determining these GWP_{bio} factors because local climate conditions will have a great influence on biomass rotation period and biomass residual decomposition rate. Therefore, region and species specific growth rates and decomposition profiles should be modelled and utilized to calculate regionalized GWP_{bio} factors for a specific bioenergy system.

The 100-year time horizon has been most commonly applied in LCA studies and is thought to be the most suitable TH for making policy-related decisions. Results from Table 3 indicate that the CO_2 being emitted from long rotation NS-based bioenergy creates a significant impact on the climate. With this TH of 100 years, the CRF is in the range of 44–62% relative to a fossil CO_2 emission. This is significant, and therefore in order for NS-based bioenergy to be warranted as a sound renewable energy for climate change mitigation, it should be efficiently utilized. Simultaneously, effective policies need to be implemented to ensure efficient substitution of fossil energy systems. The carbon neutral-equals-climate neutral paradigm needs to be overcome and biogenic CO_2 emissions from sustainably grown biomass should no longer be accounted for creating 0% climate change impact potential.

Acknowledgements

The authors would like to acknowledge the Norwegian research council for funding this work through the Bio-energy Innovation Centre (CenBio).

References

- Beurskens LWM, Hekkenberg M, Vethman P (2011). *Renewable Energy Projections as Published in the National Renewable Energy Action Plans of the European Member States*. <http://www.ecn.nl/docs/library/report/2010/e10069.pdf>. Accessed 02.02.2012, ECN-E-10-069.
- Bird N, Cowie A, Cherubini F, Jungmeier G (2011). *Using a Life Cycle Assessment Approach to Estimate the Net Greenhouse Gas Emissions of Bioenergy*. <http://www.ieabioenergy.com/MediaItem.aspx?id=7099>. Accessed 02.10.2012, IEA Bioenergy.
- Bright RM, Strømman AH, Peters GP (2011) Radiative forcing impacts of boreal forest biofuels: a scenario study for Norway in light of albedo. *Environmental Science & Technology*, **45**, 7570–7580.
- Cherubini F, Guest G, Strømman AH (2012) Application of probability distributions to the modeling of biogenic CO_2 fluxes in life cycle assessment. *GCB Bioenergy*. doi: 10.1111/j.1757-1707.2011.01156.x.
- Cherubini F, Strømman AH (2011) Life cycle assessment of bioenergy systems: state of the art and future challenges. *Bioresource Technology*, **102**, 437–451.
- Cherubini F, Peters GP, Berntsen T, Strømman AH, Hertwich E (2011a) CO_2 emissions from biomass combustion for bioenergy: atmospheric decay and contribution to global warming. *GCB Bioenergy*, **3**, 413–426.
- Cherubini F, Strømman AH, Hertwich E (2011b) Effects of boreal forest management practices on the climate impact of CO_2 emissions from bioenergy. *Ecological Modelling*, **223**, 59–66.
- Clark KL, Gholz HL, Castro MS (2004) Carbon dynamics along a chronosequence of slash pine plantations in north florida. *Ecological Applications*, **14**, 1154–1171.
- Cullen JM, Allwood JM (2010) Theoretical efficiency limits for energy conversion devices. *Energy*, **35**, 2059–2069.
- Dandres T, Gaudreault C, Tirado-Seco P, Samson R (2012) Macroanalysis of the economic and environmental impacts of a 2005–2025 European Union bioenergy policy using the GTAP model and life cycle assessment. *Renewable and Sustainable Energy Reviews*, **16**, 1180–1192.
- Eriksson E, Gillespie AR, Gustavsson L, Langvall O, Olsson M, Sathre R, Stendahl J (2007) Integrated carbon analysis of forest management practices and wood substitution. *Canadian Journal of Forest Research*, **37**, 671–681.
- EU (2008). *Energy and Climate Package: The Package of EU Climate and Energy Measures*. Approved in December 2008, http://ec.europa.eu/clima/policies/package/documentation_en.htm. Accessed 02.08.2012.
- Fang J, Chen A, Peng C, Zhao S, Ci L (2001) Changes in forest biomass carbon storage in China between 1949 and 1998. *Science*, **292**, 2320–2322.
- Fargione J, Hill J, Tilman D, Polasky S, Hawthorne P (2008) Land clearing and the biofuel carbon debt. *Science*, **319**, 1235–1238.

- Forsberg G (2000) Biomass energy transport: analysis of bioenergy transport chains using life cycle inventory method. *Biomass and Bioenergy*, **19**, 17–30.
- Forster P, Artaxo P, Bernsten T *et al.* (2007) Changes in Atmospheric Constituents and in Radiative Forcing. In *Climate Change 2007: The Physical Science Basis* (ed. Solomon S), Contribution of Working Group I to the Fourth Assessment Report of the Intergovernmental Panel on Climate Change. Cambridge University Press, Cambridge, UK.
- Guest G, Cherubini F, Strömman AH (2012) Global warming potential of CO₂ emissions from biomass stored in the anthroposphere and used for bioenergy at end of life. *Journal of Industrial Ecology*. doi: 10.1111/j.1530-9290.2012.00507.x.
- Helmissaari HS, Hanssen KH, Jacobson S *et al.* (2011) Logging residue removal after thinning in Nordic boreal forests: long-term impact on tree growth. *Forest Ecology and Management*, **261**, 1919–1927.
- Higo M, Dowaki K (2010) A life cycle analysis on a Bio-DME production system considering the species of biomass feedstock in Japan and Papua New Guinea. *Applied Energy*, **87**, 58–67.
- IPCC (2006) *2006 IPCC Guidelines for National Greenhouse Gas Inventories*, Prepared by the National Greenhouse Gas Inventories Programme, (eds Eggleston HS, Buendia L, Miwa K, Ngara T, Tanabe K, Pichs-Madruga R, Sokona Y, Seyboth K), IGES, Japan.
- Jandl R, Lindner M, Vesterdal L *et al.* (2007) How strongly can forest management influence soil carbon sequestration? *Geoderma*, **137**, 253–268.
- Kauppi PE, Ausubel JH, Fang J, Mather AS, Sedjo RA, Waggoner PE (2006) Returning forests analyzed with the forest identity. *Proceedings of the National Academy of Sciences*, **103**, 17574–17579.
- Kellomäki S, Peltola H, Nuutinen T, Korhonen KT, Strandman H (2008) Sensitivity of managed boreal forests in Finland to climate change, with implications for adaptive management. *Philosophical Transactions of the Royal Society B: Biological Sciences*, **363**, 2339–2349.
- Kravanja P, Könighofer K, Canella L, Jungmeier G, Friedl A (2012). Perspectives for the production of bioethanol from wood and straw in Austria: technical, economic, and ecological aspects. *Clean Technologies and Environmental Policy* **14**, 411–425.
- Lehtonen A, Mäkipää R, Heikkinen J, Sievänen R, Liski J (2004) Biomass expansion factors (BEFs) for Scots pine, Norway spruce and birch accounting to stand age for boreal forests. *Forest Ecology and Management*, **188**, 211–224.
- Liu S, Bond-Lamberty B, Hicke JA *et al.* (2011). Simulating the impacts of disturbances on forest carbon cycling in North America: processes, data, models, and challenges. *Journal of Geophysical Research* **116**, 1–22, G00K08.
- Masek JG, Collatz GJ (2006) Estimating forest carbon fluxes in a disturbed southeastern landscape: integration of remote sensing, forest inventory, and biogeochemical modeling. *Journal of Geophysical Research*, **111**, 1–15, G01006.
- McKechnie J, Colombo S, Chen J, Mabey W, MacLean HL (2010) Forest bioenergy or forest carbon? assessing trade-offs in greenhouse gas mitigation with wood-based fuels. *Environmental Science & Technology*, **45**, 789–795.
- Morgera E, Kulovesi K, Gobena A (2009) *Case Studies on Bioenergy Policy and Law: Options for Sustainability*. Food and Agricultural Organization of the United Nations, Rome, Italy.
- Olsson BA, Staaf H, Lundkvist H, Bengtsson J, Kaj R (1996) Carbon and nitrogen in coniferous forest soils after clear-felling and harvests of different intensity. *Forest Ecology and Management*, **82**, 19–32.
- Pa A, Craven J, Bi X, Melin S, Sokhansanj S (2012) Environmental footprints of British Columbia wood pellets from a simplified life cycle analysis. *The International Journal of Life Cycle Assessment*, **17**, 220–231.
- de Pous P (2009). *EEB Analysis of EU's Revised Biofuels and Bioenergy Policy*. EEB (European Environmental Bureau), Brussels, Belgium.
- Repo A, Tuomi M, Liski J (2011) Indirect carbon dioxide emissions from producing bioenergy from forest harvest residues. *Global Change Biology Bioenergy*, **3**, 107–115.
- Repo A, Känkänen R, Tuovinen JP, Antikainen R, Tuomi M, Vanhala P, Liski J (2012) Forest bioenergy climate impact can be improved by allocating forest residue removal. *Global Change Biology Bioenergy*, **4**, 202–212.
- Rørstad PK, Trømborg E, Bergseng E, Solberg B (2010) Estimating regional supply of harvest residues in Norway. *Silva Fennica*, **44**, 435–451.
- Sathre R, Gustavsson L (2011) Time-dependent climate benefits of using forest residues to substitute fossil fuels. *Biomass and Bioenergy*, **35**, 2506–2516.
- Sathre R, Gustavsson L, Bergh J (2010) Primary energy and greenhouse gas implications of increasing biomass production through forest fertilization. *Biomass and Bioenergy*, **34**, 572–581.
- Schimel DS, House JI, Hibbard KA *et al.* (2001) Recent patterns and mechanisms of carbon exchange by terrestrial ecosystems. *Nature*, **414**, 169–172.
- Schnute J (1981) A versatile growth model with statistically stable parameters. *Canadian Journal of Fisheries and Aquatic Sciences*, **38** (1128), 1140.
- Searchinger TD (2010) Biofuels and the need for additional carbon. *Environmental Research Letters*, **5**, 1–10, 024007.
- Tuomi M, Vanhala P, Karhu K, Fritze H, Liski J (2008) Heterotrophic soil respiration – comparison of different models describing its temperature dependence. *Ecological Modelling*, **211**, 182–190.
- Tuomi M, Thum T, Järvinen H *et al.* (2009) Leaf litter decomposition—Estimates of global variability based on Yasso07 model. *Ecological Modelling*, **220**, 3362–3371.
- Veli-Matti S (2006) The effects of slash and stump removal on productivity and quality of forest regeneration operations—preliminary results. *Biomass and Bioenergy*, **30**, 349–356.
- Walmesley JD, Godbold DL (2010) Stump harvesting for bioenergy – a review of the environmental impacts. *Forestry*, **83**, 17–38.
- Whittaker C, Mortimer N, Murphy R, Matthews R (2011) Energy and greenhouse gas balance of the use of forest residues for bioenergy production in the UK. *Biomass and Bioenergy*, **35**, 4581–4594.
- de Wit HA, Palosuo T, Hysten G, Liski J (2006) A carbon budget of forest biomass and soils in southeast Norway calculated using a widely applicable method. *Forest Ecology and Management*, **225**, 15–26.
- Yanai RD, Currie WS, Goodale CL (2003) Soil carbon dynamics after forest harvest: an ecosystem paradigm reconsidered. *Ecosystems*, **6**, 197–212.
- Zabowski D, Skinner MF, Rygielwicz PT (1994) Timber harvesting and long-term productivity: weathering processes and soil disturbance. *Forest Ecology and Management*, **66**, 55–68.
- Zhao S, Liu S, Li Z, Sohl TL (2009) Ignoring detailed fast-changing dynamics of land use overestimates regional terrestrial carbon sequestration. *Biogeosciences Discussions*, **6**, 3215–3235.

Supporting Information

Additional Supporting Information may be found in the online version of this article:

Data S1. Further details on forest residue decomposition modeling and GWPbio factor sensitivity analysis.

Please note: Wiley-Blackwell are not responsible for the content or functionality of any supporting materials supplied by the authors. Any queries (other than missing material) should be directed to the corresponding author for the article.