

Article

Genomic Consequences of Fragmentation in the Endangered Fennoscandian Arctic Fox (*Vulpes lagopus*)

Christopher A. Cockerill ¹, Malin Hasselgren ¹, Nicolas Dussex ^{1,2,3}, Love Dalén ^{1,2,3}, Johanna von Seth ^{1,2}, Anders Angerbjörn ¹, Johan F. Wallén ¹, Arild Landa ⁴, Nina E. Eide ⁴, Øystein Flagstad ⁴, Dorothee Ehrich ⁵, Aleksandr Sokolov ⁶, Natalya Sokolova ⁶ and Karin Norén ^{1,*}

¹ Department of Zoology, Stockholm University, 10691 Stockholm, Sweden

² Centre for Palaeogenetics, Svante Arrhenius Väg 20C, 10691 Stockholm, Sweden

³ Department of Bioinformatics and Genetics, Swedish Museum of Natural History, 11418 Stockholm, Sweden

⁴ Norwegian Institute for Nature Research, 7485 Trondheim, Norway

⁵ Department of Arctic and Marine Biology, UiT Arctic University of Tromsø, 9037 Tromsø, Norway

⁶ Arctic Research Station of Institute of Plant and Animal Ecology, Ural Branch, Russian Academy of Sciences, Zelenaya Gorka Str. 21, 629400 Labytnangi, Russia

* Correspondence: karin.noren@zoologi.su.se

Abstract: Accelerating climate change is causing severe habitat fragmentation in the Arctic, threatening the persistence of many cold-adapted species. The Scandinavian arctic fox (*V. lagopus*) is highly fragmented, with a once continuous, circumpolar distribution, it struggled to recover from a demographic bottleneck in the late 19th century. The future persistence of the entire Scandinavian population is highly dependent on the northernmost Fennoscandian subpopulations (Scandinavia and the Kola Peninsula), to provide a link to the viable Siberian population. By analyzing 43 arctic fox genomes, we quantified genomic variation and inbreeding in these populations. Signatures of genome erosion increased from Siberia to northern Sweden indicating a stepping-stone model of connectivity. In northern Fennoscandia, runs of homozygosity (ROH) were on average ~1.47-fold longer than ROH found in Siberia, stretching almost entire scaffolds. Moreover, consistent with recent inbreeding, northern Fennoscandia harbored more homozygous deleterious mutations, whereas Siberia had more in heterozygous state. This study underlines the value of documenting genome erosion following population fragmentation to identify areas requiring conservation priority. With the increasing fragmentation and isolation of Arctic habitats due to global warming, understanding the genomic and demographic consequences is vital for maintaining evolutionary potential and preventing local extinctions.

Keywords: inbreeding; runs of homozygosity; bottleneck; fragmentation; mutational load; conservation

Citation: Cockerill, C.A.; Hasselgren, M.; Dussex, N.; Dalén, L.; von Seth, J.; Angerbjörn, A.; Wallén, J.F.; Landa, A.; Eide, N.E.; Flagstad, Ø.; et al. Genomic Consequences of Fragmentation in the Endangered Fennoscandian Arctic Fox (*Vulpes lagopus*). *Genes* **2022**, *13*, 2124. <https://doi.org/10.3390/genes13112124>

Academic Editors: Joe Hoffman, Melody Clark and Svenja Heesch

Received: 7 September 2022

Accepted: 10 October 2022

Published: 15 November 2022

Publisher's Note: MDPI stays neutral with regard to jurisdictional claims in published maps and institutional affiliations.



Copyright: © 2022 by the authors. Licensee MDPI, Basel, Switzerland. This article is an open access article distributed under the terms and conditions of the Creative Commons Attribution (CC BY) license (<https://creativecommons.org/licenses/by/4.0/>).

1. Introduction

Arctic species are at an increasing risk of extinction due to climate change and human activities [1,2]. Habitat fragmentation is a widespread consequence of global warming [3], particularly due to an expansion of the treeline and increased boreal influence in the southern Arctic [4,5]. This fragmentation is exacerbated by direct and indirect human activities, through increased development and encroachment within the Arctic itself, and industrial processes contributing to the warming climate [2]. Consequently, specialist species endemic to the Arctic undergo population fragmentation, threatening their persistence when they are confined to isolated pockets of habitat [6,7].

Connectivity is vital for dispersal and gene flow. When arctic species are confined to fragmented populations, they tend to lose genetic variation and the ability to withstand environmental and demographic stochasticity [8]. Genetic drift, inbreeding and inbreeding depression (i.e., genome erosion) are major consequences of small population size, which are likely to occur following subpopulation isolation [9]. Furthermore, Allee effects,

(i.e., the effects of reduced population density on reproduction and population growth), will also arise [10]. These genetic and demographic processes affect small populations disproportionately, in what is referred to as ‘the small population paradigm’ [11]. The interplay between these processes can create a feedback loop known as ‘the extinction vortex’, where the negative impact of genetic and demographic factors will increase with decreasing population size [12–15]. Under such a scenario, genetic differentiation between subpopulations will increase, genetic variation will decrease, and both will eventually contribute to population decline and extinction through reduced fitness [14]. The most widely accepted explanation for inbreeding depression is the dominance hypothesis, i.e., the increase in homozygosity at loci with an accumulation of rare recessive deleterious alleles [16–18]. Alternatively, the overdominance hypothesis predicts that the inbreeding-induced loss of heterozygosity reduces fitness based on the heterozygote advantage theory [9,19]. These processes cause a reduction in average fitness of the population, which can persist for many generations.

Gene flow from a separate, differentiated source can counteract genetic drift, and mitigate inbreeding depression through increased fitness and population growth (genetic rescue [20,21]). Maintaining metapopulation structure and regular gene flow is thus vital for population persistence due to the transient fitness benefits of infrequent gene flow. Inbreeding depression and genetic rescue are challenging to document in the wild [22,23], due to the extensive monitoring required, combined with unpredictable natural conditions, and the difficulty in obtaining individual fitness data. However, some studies have documented inbreeding depression (i.e., [24–27]), and genetic rescue (i.e., [28,29]) in wild populations. Inbreeding depression is traditionally estimated using fitness-related traits linked to pedigree-based inbreeding coefficients [9,22]. However, pedigrees have many caveats, including unknown relatedness among founders and limited historical perspectives about inbreeding [30]. Thus, pedigrees are often unreliable, with variable capacity to detect inbreeding depression among studies. Advances in whole genome sequencing have provided the opportunity to assess genome-wide heterozygosity and genomic inbreeding levels. Stretches of identical by descent (IBD) chromosomal regions are characteristic of inbreeding due to recent common ancestors. These runs of homozygosity (ROH) are shortened through recombination over generations [31,32] where the shorter the ROH, the older the inbreeding, however very short ROH have a higher likelihood of being identical by state [33]. Signatures of inbreeding along the entire chromosome have recently been identified in a range of species [30,34–36].

Genomic analyses can also identify accumulation of putatively deleterious mutations across the genome. This ability to assess the proportion of homozygous and heterozygous genotypes of mutations in small, isolated populations relative to an outbred population is valuable for exploring the potential consequences of population fragmentation [34]. It is still debated whether inbreeding depression is caused by a few strongly deleterious mutations or many weakly deleterious mutations [30]. Nevertheless, identifying the proportion of deleterious mutations after a population bottleneck or re-colonization event with few founders can be used as a proxy for genetic load and is an important first step to understanding the underlying mechanisms of inbreeding depression.

The population of arctic fox (*V. lagopus*) in Fennoscandia (Sweden, Norway, Finland and on the Kola Peninsula) is at present highly fragmented, but was once connected to the circumpolar distribution of the species [37]. The population was drastically reduced by hunting pressure in the late 19th century [38], leading to a severe demographic and genetic bottleneck [39,40]. The increased irregularity of natural prey cycles, combined with interspecific competition and intraguild predation from red fox (*V. vulpes*) has prevented the population from recovering [41,42]. The few remaining Fennoscandian subpopulations are isolated, genetically distinct units that exhibit decreasing levels of genetic variation with increasing distance to the once connected, likely panmictic populations in Siberia [43,44].

Arctic foxes are long-distance dispersers, capable of traveling thousands of kilometers in the absence of barriers [45]. However, the Scandinavian tundra (mostly mountain tundra) is naturally fragmented with intersectional boreal forests [46,47]. Ice-free coasts around Fennoscandia and an increasingly ice-free White Sea limit dispersal from the East [48,49]. The Russian Arctic stretching from the Kanin Peninsula to the shores of the Bering Sea does not exhibit such barriers [48].

The northernmost subpopulations of arctic foxes in Fennoscandia (northern Scandinavia and the Kola Peninsula) are vital for the future persistence of the entire Scandinavian population, as they can enhance gene flow by providing a link to Siberia. Previous studies have assessed the differentiation between these populations, but were limited to microsatellites, mitochondrial DNA control regions and mitogenome sequences [39,40,43,44]. It has been established that dispersal with gene flow has gradually declined following the 19th century population bottleneck [39,40,43,48,50]. The state of the arctic fox population on the Kola Peninsula has been unknown for more than half a century, but recent investigations revealed a situation similar to Scandinavia, with an extremely isolated population consisting of at most a few dozen individuals [49]. Likewise, recent assessments of the northernmost subpopulations of Norway in Finnmark suggest that climate-driven rodent cycle irregularity and increasing red fox abundance may have resulted in the near loss of the arctic fox of this area [51]. However, it is likely that the species was still more abundant in Finnmark and on the Kola Peninsula until the 1970s and that the decline was more recent than further south in Scandinavia [49,51].

Reflecting the barriers in Fennoscandia, and resulting population isolation, inbreeding depression was documented in the southern Swedish subpopulation [52]. While limited genetic rescue was detected following immigration from Norway [53,54], research suggests that introducing unscreened genetic variation may impose a trojan horse effect in small populations, where introduced additional deleterious variants risk being unmasked by inbreeding, increasing the mutational load [55–58]. Therefore, it is vital to consider the proportion of mutations in small, isolated subpopulations relative to larger, outcrossing populations. Inbreeding within the Scandinavian arctic fox populations have mostly focused on the southernmost subpopulation in Sweden. However, connectivity through the north to the large populations in Siberia has been understudied and may be crucial for long-term population persistence and re-establishing a viable metapopulation in Fennoscandia. The genomic consequences of this fragmentation are yet to be explored and could reveal the complexities surrounding its isolation and subsequent decline. The relatively recent fragmentation of the northern subpopulations, which experienced a more recent decline, provides a unique opportunity to explore the levels of genomic inbreeding in small, isolated subpopulations in relation to a much larger, panmictic population. By identifying the levels of genomic inbreeding in northernmost Fennoscandia, the status of these vital subpopulations can be identified. Moreover, relating this information to the outbred Russian population and the highly inbred southernmost Swedish subpopulation will reveal the potential for gene flow and pinpoint high priority areas for conservation measures. Given the small and isolated state of the Fennoscandian subpopulations, the consequences of genetic drift should also be investigated to document the state and accumulation of deleterious mutations.

The aim of this study was to use high-coverage genomes from northernmost Fennoscandia, the neighboring Russian population on Kola and the large populations to the east to assess the genomic consequences of population fragmentation. We determined the extent of genome-wide heterozygosity and inbreeding levels (F_{ROH}), as well as the proportion of homozygous versus heterozygous deleterious mutations in the northernmost Scandinavian subpopulation, the Kola Peninsula, and the larger Siberian population. We hypothesized that (1) measures of genomic inbreeding due to common ancestors would be significantly higher in northern Fennoscandia compared to Siberia, (2) being the farthest from Siberia, the northern Swedish population would have the highest levels of recent

inbreeding, and (3) the proportion of homozygous deleterious mutations would be significantly higher in northern Fennoscandia, while the proportion of heterozygous deleterious mutations would be significantly higher in Siberia.

2. Materials and Methods

2.1. Study Populations

The study area spans northern Eurasia from Scandinavia to Eastern Siberia (Figure 1). In northern Sweden, we included samples from Vindelfjällen and Arjeplog, and in northern Norway, we included samples from Saltfjellet, Reisa nord, Varangerhalvøya and Øvre Dividal (Table 1, Figure 2). In Russia, we included one sample from Kola, which is biogeographically part of Fennoscandia, and samples from several sites in Siberia (the region east of the Ural Mountains): Yamal, Taymyr, Indigirka, Faddeyevsky Island and Wrangel Island (Table 1, Figure 1). Samples included in this study were collected between 1989 and 2019 (Table 1), consisting of ear tissue from ear-tagging, preserved in 99% ethanol, and muscle tissue from carcasses, all stored at minus 20 °C. Since the 1980s, the Swedish arctic fox population has been monitored closely, with summer inventories taking place to ear-tag, collect tissue for DNA analysis and monitor reproduction, survival, and body condition of individuals, using unique ear combinations for identification [59]. The Norwegian samples were derived from founders from The Norwegian Arctic fox captive breeding program (Saltfjellet, Reisa Nord and Øvre Dividal), as well as an arctic fox carcass from the Norwegian monitoring program (Varanger Peninsula), implemented by the Norwegian Institute for Nature Research (NINA).

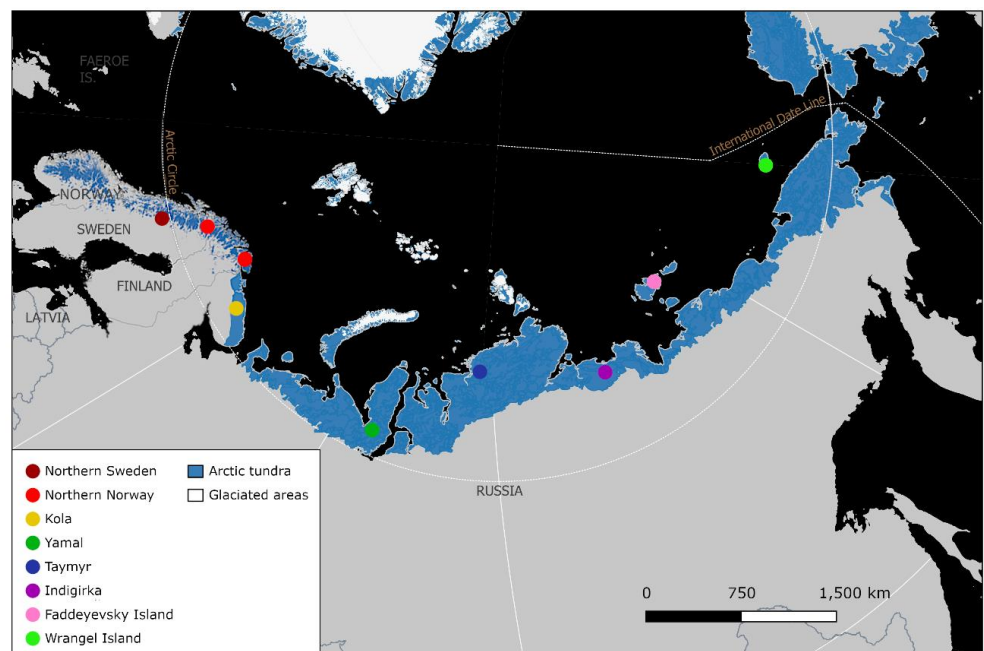


Figure 1. Map showing the distribution of Arctic tundra habitat (Scandinavia: alpine tundra [60]; Eurasia: oro-arctic tundra [61]) in relation to study sample areas in northern Sweden, northern Norway, Kola, Yamal, Taymyr, Indigirka, Faddeyevsky Island and Wrangel Island.

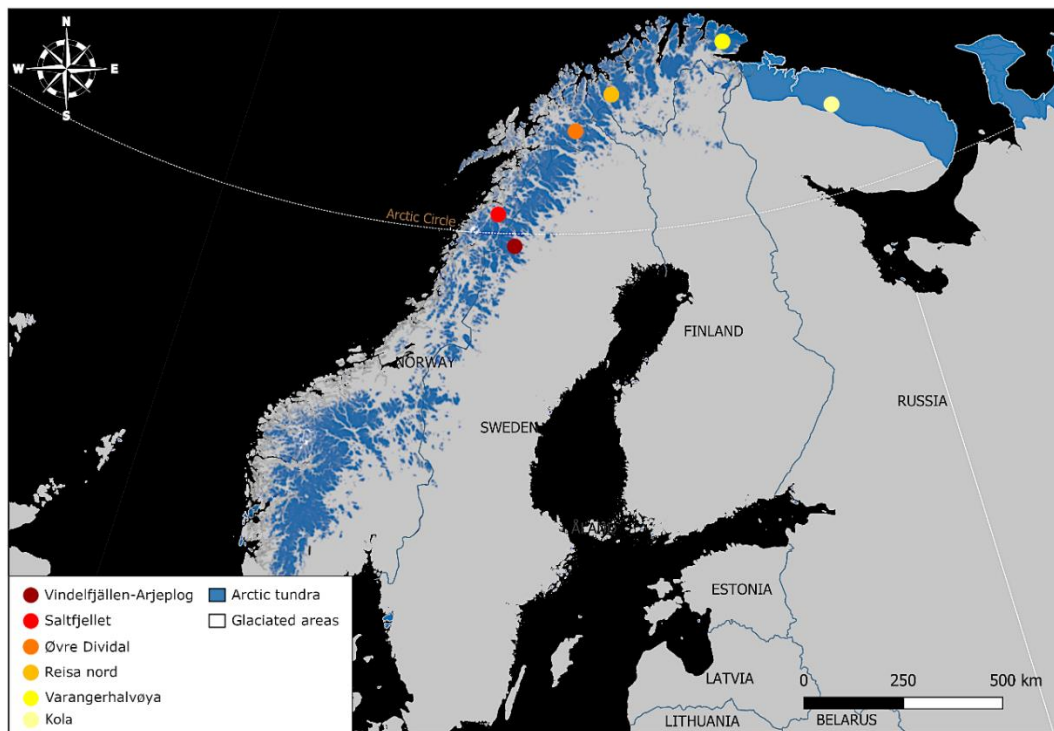


Figure 2. Map showing the distribution of Arctic tundra habitat (Scandinavia: alpine tundra [60]; Kola: oro-arctic tundra [61]) in relation to study sample areas in Vindelfjällen-Arjeplog, Saltfjellet, Øvre Dividal, Reisa nord, the Varanger Peninsula, and the Kola Peninsula.

All Siberian samples were collected between 1994–2008. The Arctic Research Station in Labytnangi contributed two Siberian samples from Yamal (ID 5974, 5967; samples obtained from fur trappers from the indigenous community of Yamal), and the rest were collected during expeditions arranged by the Swedish Polar Research Institute in 1999 and 2005, during the Swedish-Russian Tundra Ecology-Expedition in 1994, and during the International Polar Year in 2008.

Table 1. Summary of country, area, year, tissue type, sampling method and number of individuals used for whole genome analyses, with new samples sequenced for this study in parentheses.

Population	Country	Sample Area	Year	Tissue Type	Sampling Method	<i>n</i>
Fennoscandia	Northern Sweden	Vindelfjällen	1989–2019	Ear tissue	Ear tagging	15
		Arjeplog	2008–2019	Ear tissue	Ear tagging	11(5)
	Northern Norway	Saltfjellet	2007	Ear tissue	Ear tagging	1
		Reisa nord	2007	Ear tissue	Ear tagging	1
		Varangerhalvøya	2011	Muscle tissue	Injured fox	1
	Øvre Dividal	2005	Ear tissue	Ear tagging	1	
Siberia	Russia	Kola	1990s	Muscle tissue	Carcass sampling	1
	Russia	Indigirka	1994	Muscle tissue	Carcass sampling	1(1)
		Yamal	1994–2011	Skin/muscle tissue	Carcass sampling	4
		Taymyr	1994	Skin/muscle tissue	Carcass sampling	5(4)
		Faddeyevsky Island	1994	Muscle tissue	Carcass sampling	1(1)
		Wrangel Island	2008	Skin tissue	Carcass sampling	1(1)

2.2. DNA Extraction and Resequencing

Complete genome data was collated with existing genomes sequenced within ongoing research (8 Siberian, 1 from the Kola Peninsula, and 22 northern Scandinavian individuals). This data set was supplemented with material from 12 new samples sequenced for this study (4 Siberian and 8 northern Scandinavian individuals), for a total sample size of 43 genomes (Table S1). Extraction of DNA for the northern Swedish, northern Norwegian and Siberian tissue samples took place using the DNeasy Tissue Kit (Qiagen, Hilden, Germany) according to manufacturer's instructions in a laboratory separated from post-PCR products. However, 3 Swedish samples were extracted using the Thermo Scientific KingFisher Cell and Tissue DNA kit (Thermo Fisher Scientific, Waltham, USA). After quality check, the Swedish and Siberian genomes were sequenced at The National Genomics Infrastructure (NGI), SciLifeLab, Stockholm, using a combination of the Illumina Novaseq6000 and MiSeq platforms with a 2×150 bp setup and TruSeq PCR-free library construction. The 3 Swedish samples extracted using the Thermo Scientific KingFisher Cell and Tissue DNA kit (Thermo Fisher Scientific, Waltham, USA) were sequenced using the Illumina HiSeq X platform with TruSeq library construction, and the library of sample 11119 was constructed using the Lucigen NxSeq AmpFREE Low protocol (Lucigen, Middleton, USA). The Norwegian and 2 Siberian samples (ID 5974, 5967) were sequenced at the Genomics Core Facility, Dept. of Cancer Research and Molecular Medicine at NTNU in Norway. Library preparation for these samples was performed according to the TruSeq DNA PCR-Free LT Sample Preparation Kit (Illumina, San Diego, CA, USA), and the samples were sequenced on Illumina HiSeq 4000.

2.3. Bioinformatics and Variant Calling

For bioinformatic analyses and variant calling, we followed the GenErode pipeline by [62], parameterized according to Hasselgren et al. (2021). First, Trimmomatic v.0.36 [63] was used to trim adapters from raw reads. The trimmed reads were aligned with an arctic fox reference genome (*Vlagopus_NRM_v1.fa*; Genbank assembly ID: GCA_018835635.1) using the Burrows–Wheeler Aligner (BWA) v.0.7.17 [64]. Samtools v.1.9 [65] was used to sort and index BAM files, duplicates were removed using Picard v.2.10.3 [66] and indels realigned with GATK v.3.7 [67,68]. To control for quality and calculate mean coverage, we used Qualimap v.2.2 [69].

Variants were called using bcftools mpileup v.1.6 and bcftools call v.1.6 [65,70] following a minimum depth of one third of the average coverage (i.e., $\sim 8.89X$) and maximum of twice the average coverage for each sample (i.e., $\sim 53.36X$). Single Nucleotide Polymorphisms (SNPs) were filtered by base quality equal or higher than $QV = 30$ and those within 5 bp of indels. The X chromosome, mitogenome, hard masked repeat regions and scaffolds smaller than 25,000 bp long were all removed for downstream analyses using BEDtools v.2.27.1 [71]. All individual vcf files were then merged, obtaining 9,165,115 high quality single nucleotide polymorphisms (SNPs). After merging of vcf files, 13,102,461 high-quality SNPs were obtained. A total of 4,862,746 high quality SNPs were used in downstream analyses, using only variants called in every individual.

2.4. Population Structure

Population stratification based on variation in 4,862,746 high quality SNPs was illustrated with a principal component (PC) analysis using PLINK v.1.9, based on the variance-standardized relationship matrix [72], visualized in R v.4.1.2 [73].

2.5. Genome-Wide Heterozygosity and Genomic Inbreeding Coefficients (F_{ROH})

The population scaled mutation rate theta ($\theta = 4 N_e \mu$ [74]) was estimated using mlrho [75], an approximate measure of expected heterozygosity per site under the infinite sites model, where N_e denotes the effective population size and μ denotes mutation rate [76]. Bases with quality below 30, reads with mapping quality below 30, and positions with

root-mean-squared mapping quality below 30 were filtered out. Due to structural variation, high and low coverage in certain regions can result in inaccurate mapping to the reference genome and false heterozygous sites; therefore, we filtered out sites with depth one third of the average coverage and twice the average coverage for each sample.

Levels of inbreeding were estimated based on runs of homozygosity (F_{ROH}) using a sliding window size of 200 SNPs (0.2 kb; homozyg-window-snp 200) with a maximum of 3 heterozygous SNPs in each window, using the software PLINK v.1.9 [72]. Sliding windows were classified as homozygous if not more than three sites were heterozygous per window (homozyg-window-het 3). A SNP was classified as within a homozygous segment of a chromosome if at least 5% of all windows including that SNP were defined as homozygous (homozyg-window-threshold 0.05). The correct boundaries of a ROH were ensured by using this threshold. Certain conditions determine if a homozygous segment is determined as a ROH: The segment contained ≥ 100 SNPs long (homozyg-snp 100) and covered ≥ 100 kb (homozyg-kb 100). Also, it had a minimum SNP density that was one SNP per 50 kb (homozyg-density 50) and the maximum distance between two neighboring SNPs was ≤ 1000 kb (homozyg-gap 1000).

To determine the number of generations, in time, that inbreeding extends to, we quantified the amount of genomic inbreeding (F_{ROH}). This was calculated as the proportion of the total genome that consisted of runs of homozygosity:

$$g = 100/(2rL), \quad (1)$$

The number of generations is denoted by g , L denotes the length of ROH in Mb, and r denotes the recombination rate ($r = 4 N_e C$ [77]), where C is the probability of recombination. The recombination rate of the silver fox (*V. vulpes*; 0.6 cM per Mb [78]) was used due to the similar life history traits. Based on this, ROH larger than 100 kb reflects inbreeding that can be traced to ancestors around 850 generations back in time (historical), while 2 Mb reflects around 45 generations, marking the persecution and subsequent endangered status of the Scandinavian arctic fox. ROH larger than 8 Mb reflects coalescence 10 generations back (recent), which corresponds to the time when conservation actions were initiated [61]. Furthermore, due to measuring ROH in Mb instead of genetic map length, (cM), a large variance is expected in the estimates. We used a generation time of 2 years, consistent with Hasselgren et al. [53]. To rule out depth of coverage influencing estimates of F_{ROH} and heterozygosity [53], we tested for relationships between these parameters, with r values varying from -0.06 and 0.29 .

2.6. Mutational Load

We quantified the mutational load according the Kutschera et al. [62], using the red fox annotation (GCF_003160815.1 [79]) to identify and annotate synonymous and nonsynonymous variants within the proximity of coding regions. Identified mutations were genotyped and categorized into three types by their effect on protein expression: variants unlikely to change protein behavior (low: synonymous), neutral variants that may change protein effectiveness (moderate; missense), and variants that exhibit a high disruptive impact on protein function (high: Loss of Function; LoF). The proportion of variants in each category was calculated by dividing the number of homozygous and heterozygous variants separately in each category by the total number of alleles.

2.7. Statistical Analyses

We tested for differences in genome-wide heterozygosity and F_{ROH} , along with the proportion of LoF and missense variants between northern Fennoscandia and Siberia, and among each subpopulation using non-parametric Kruskal–Wallis tests, with Dunn’s tests for post-hoc comparisons using the R package rstatix (v.0.7.0 [80]). Tests on F_{ROH} were conducted, first including ROH larger than 100 kb (coalescence < 850 generations back), then including only ROH larger than 2 Mb (<45 generations back) and finally, 8 Mb (<10 generations back).

3. Results

3.1. Population Structure

We sequenced whole-genomes of 43 arctic foxes at a depth of coverage ranging between 8–38X, with an average of 24X (Table S1). The principal component (PC) analysis revealed a clear isolation-by-distance pattern in PC1 represented by clustering of the northern Scandinavian samples to the right, with the Vindelfjällen sample from 1989 and the more north-eastern sample from the Varanger Peninsula breaking off from the main cluster (Figure 3a). The Kola sample showed an intermediate position, reflecting the geographic location of Kola in the very east of the Fennoscandian Peninsula (Figure 1). The mainland Siberian samples mainly clustered together, except for one Yamal sample reflecting the geographic distance between Yamal and the other Siberian sample areas further to the East. Wrangel Island clustered with the mainland Siberian samples. Additional structure was revealed by PC2 within the Siberian samples, whereas there was no variation within the northern Scandinavian samples. The sample from Faddeyevsky Island showed substantial separation from the mainland Siberian population. PC3 revealed further structure within the Siberian samples (Figure 3b), congruent with the high levels of genetic variation compared to the northern Fennoscandian samples. Additionally, the Wrangel Island sample separated from the mainland cluster to the top of the PC3 axis.

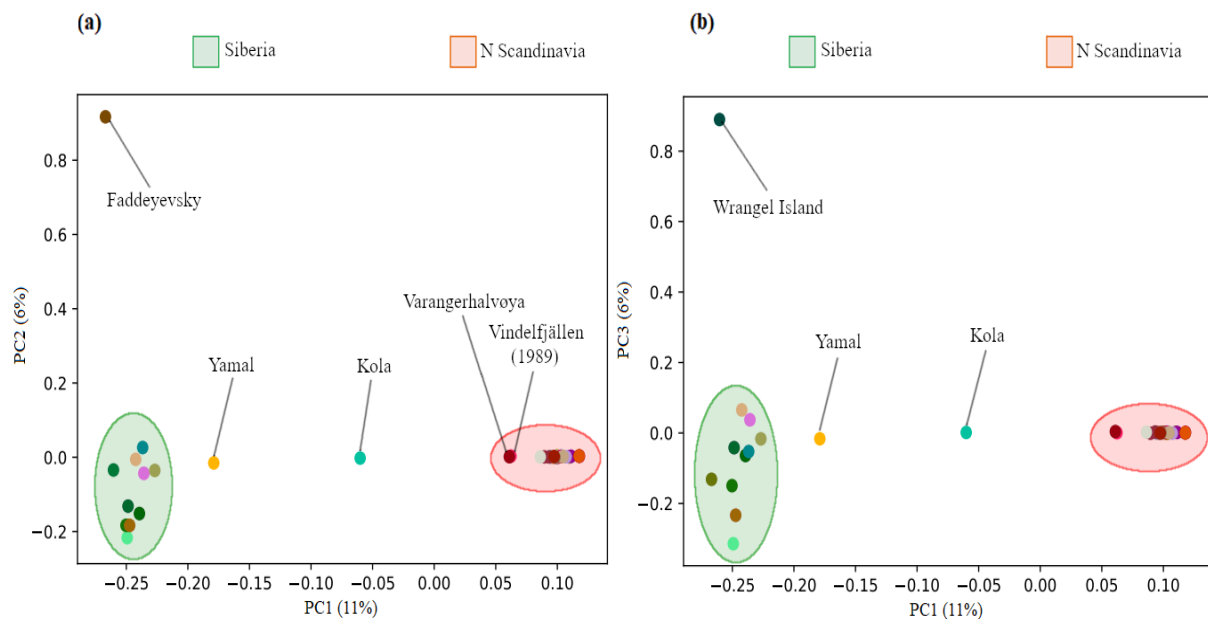


Figure 3. Principal component (PC) analysis of population stratification across samples of arctic foxes on axes (a) PC1-PC2 and (b) PC1-PC3. Points represent genotypic data for 4,862,746 single nucleotide polymorphisms (SNPs) per individual. The first two principal components (PCs) explained 11% (PC1) and 6% (PC2) of the genotypic variation across all individuals and SNPs. A clear isolation-by-distance pattern is exhibited. PC3 explained 6% of the genotypic variation.

3.2. Genome-Wide Heterozygosity

The genome-wide heterozygosity, calculated as the number of heterozygous SNPs per 1 kb (Table S1), was estimated to be on average 18.42% higher in the Siberian than northern Fennoscandian samples (Figure 4a), 13.85% higher in the Siberian than in the northern Norwegian samples and 13.81% higher than in the Kola sample when separated (Figure 4b). Northern Sweden had significantly lower genome-wide heterozygosity than Yamal, Taymyr, and E Siberia ($\chi^2 = 26.378$; $p = 0.025$; $p = 0.003$; $p = 0.025$; Figure 4b, Table S2). There was, however, no significant difference detected among the remaining sample areas (Table S2).

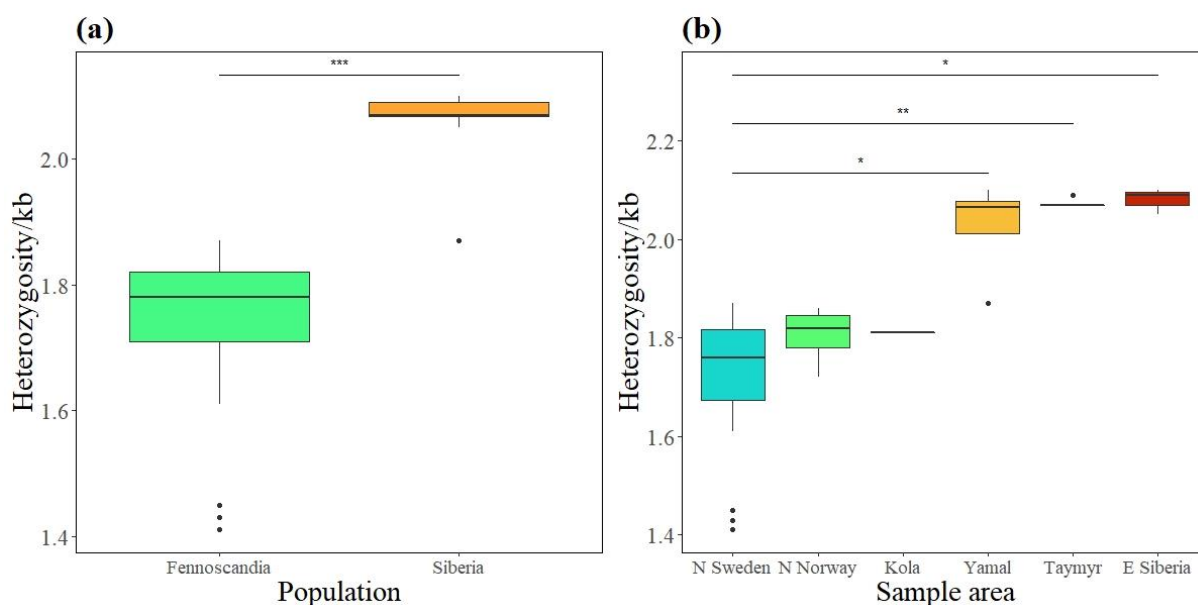


Figure 4. Genome-wide heterozygosity of individuals in northern Fennoscandian and Siberian populations (a) and separated into subpopulations (b). Heterozygosity measured as the number of heterozygote sites per 1 kb. The horizontal bar shows the median, the boxes show the 25–75% interquartile range and the whiskers show the whole range. Significant results marked with * $P < 0.05$, ** $P < 0.01$, *** $P < 0.001$.

3.3. Genomic Inbreeding Coefficients (F_{ROH})

On average, northern Fennoscandia had 1.47-fold longer runs of homozygosity (ROH) than Siberia (Figure 5a). Average ROH length declined eastwards, marking a 24.19% reduction from northern Sweden to northern Norway, 38.33% reduction from northern Scandinavia to Kola and a 33.92% reduction from Kola to E Siberia (Figure 5b). Very long ROH (>62 Mb) were detected in ten northern Scandinavian individuals, spanning across almost the entire scaffold. The longest ROH (104.7 Mb) was found in an individual from Arjeplog in northern Sweden, sampled in 2019. The longest ROH amongst the northern Norwegian samples (75.2 Mb) was found in an individual in Dividalen from 2005. Within Siberia, the longest ROH ranged from 8.8 Mb in Taymyr to 27.7 Mb in Yamal.

Individual genomic inbreeding coefficients (F_{ROH}), estimated as the proportion of the genome consisting of ROH (Table S1), ranged from 0.02 to 0.38 for inbreeding traced to both historical and recent ancestors (<850 generations, ROH > 100 kb), and from 0.00 to 0.25 for inbreeding from recent ancestors only (<10 generations, ROH > 8 Mb). There was a relatively high proportion of inbreeding traced to historical ancestors in all the sample areas, increasing towards northern Sweden (Figure 5b). In fact, inbreeding due to historical ancestors was almost as high as recent inbreeding in Fennoscandia. This contrasts with the relatively low rate of inbreeding at 10–45 generations (ROH = 2–8 Mb), which was expected to be highest given the population bottleneck. In northern Fennoscandian arctic foxes, 40% of the individual inbreeding was due to close relatedness between ancestors less than 10 generations back, whereas Siberian foxes only had 7.7% inbreeding due to recent common ancestors (Figure 5a). On average, Siberian individuals had 97.18% lower F_{ROH} than Fennoscandian foxes considering inbreeding from recent ancestors (<10 generations, ROH > 8 Mb; $\chi^2 = 25.526$, $p \leq 0.001$; Table S3), 94.34% lower considering inbreeding from up to 45 generations back (>2 Mb; $\chi^2 = 25.364$, $p \leq 0.001$; Table S4), and 85.34% lower considering inbreeding from historical ancestors (<850 generations, ROH > 100 kb; $\chi^2 = 25.364$, $p \leq 0.001$ Table S5).

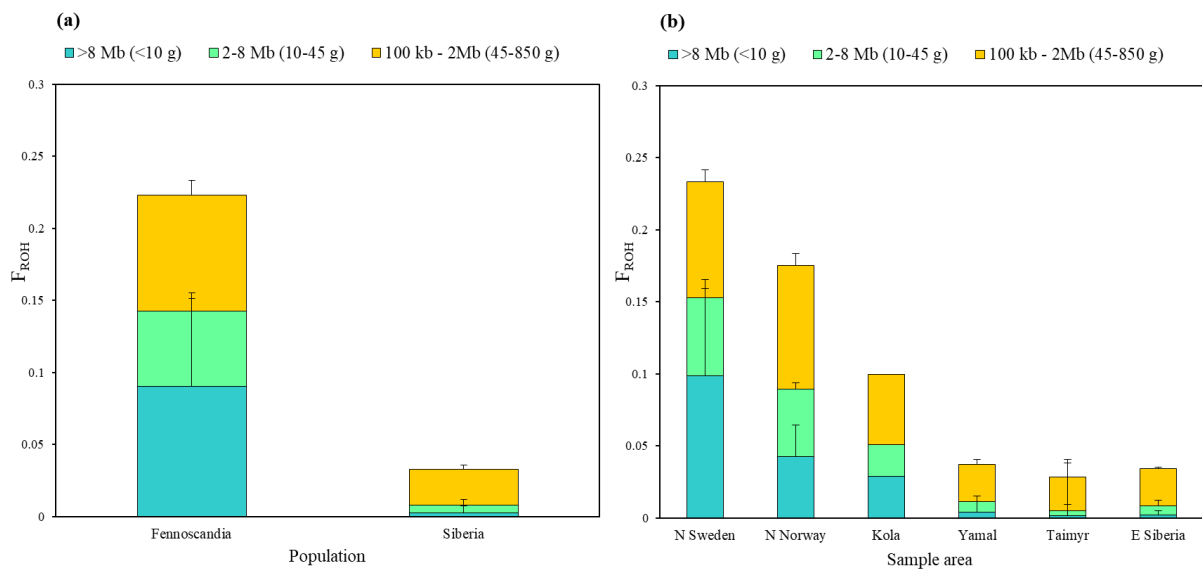


Figure 5. Mean genomic inbreeding coefficients (F_{ROH}) with standard deviation for individuals in northern Fennoscandian and Siberian populations (a) and separated into subpopulations (b). Orange bars show inbreeding due to close relations deep back in history (45–850 generations, >100 kb–2 Mb), Green bars shows show inbreeding due to close relations 10–45 generations back (2–8 Mb) and blue bars show inbreeding due to recent ancestors less than 10 generations back (>8 Mb).

3.4. Mutational Load

Northern Fennoscandia exhibited a significantly greater proportion of homozygous LoF and missense mutations than Siberia ($\chi^2 = 12.581$; $p = <0.001$; Figure 6a; $\chi^2 = 25.364$; $p = <0.001$; Figure 6c). Moreover, there was a significantly higher proportion of heterozygous LoF and missense mutations in Siberia than in northern Fennoscandia ($\chi^2 = 19.96$; $p = <0.001$; Figure 6b; $\chi^2 = 23.229$; $p = <0.001$; Figure 6d). Furthermore, northern Sweden had a significantly higher proportion of homozygous LoF variants than northern Norway and Taymyr ($\chi^2 = 25.864$; $p = 0.02$; $p = 0.001$; Figure S1a), while there was a significantly higher proportion of homozygous missense variants in northern Sweden than in Yamal, Taymyr, and E Siberia ($\chi^2 = 26.988$; $p = 0.03$; $p = 0.003$; $p = 0.04$; Figure S1c). In contrast, northern Sweden had a significantly lower proportion of heterozygous LoF variants ($\chi^2 = 22.41$; $p = 0.02$; Figure S1b), and missense variants ($\chi^2 = 24.54$; $p = 0.01$; Figure S1c) than Taymyr. Northern Norway, however, only had a significantly lower proportion for heterozygous LoF variants than Taymyr ($\chi^2 = 22.41$; $p = 0.02$; Figure S1d).

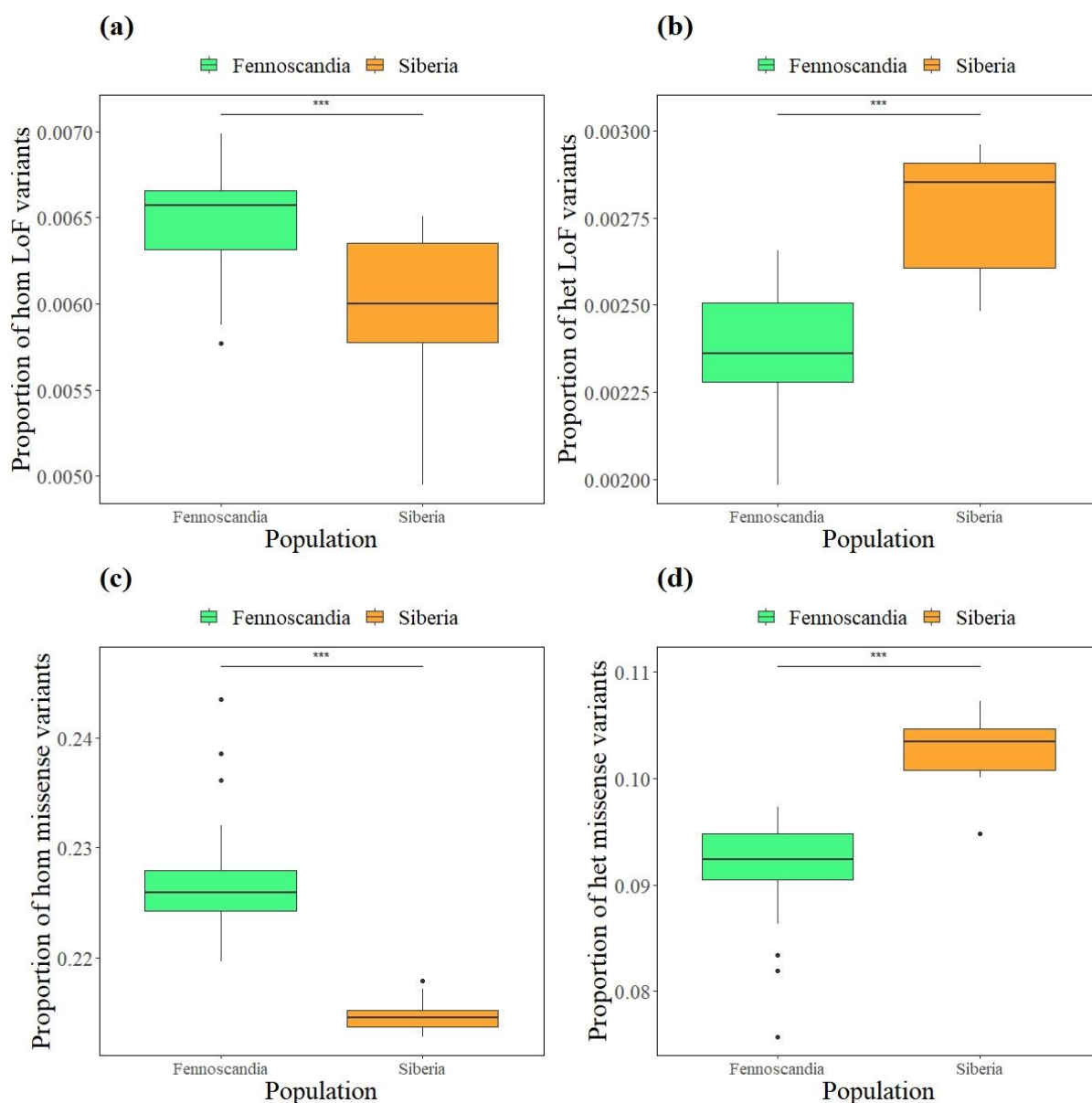


Figure 6. Proportion of deleterious variants in arctic foxes of the northern Fennoscandian and Siberian populations; separated into (a) homozygous loss of function variants (LoF), (b) heterozygous LoF variants, (c) homozygous missense variants, and (d) heterozygous missense variants. Proportion calculated as the number of each variant type divided by total variants. The horizontal bar shows the median, the boxes show the 25–75% interquartile range and the whiskers show the whole range. Significant results marked with *** $P < 0.001$.

4. Discussion

The primary aim of this study was to assess the genomic consequences of fragmentation of the northernmost Fennoscandian arctic fox populations in relation to the large, likely well-connected Siberian populations. Our study highlights the power of estimating genomic inbreeding and provides a unique historical perspective of demographic processes and genomic consequences of inbreeding up to 850 generations back in a population exposed to both geographic and demographic fragmentation.

Consistent with theoretical predictions and the population history of the arctic fox, there was a significant increase in inbreeding due to recent common ancestors between northern Fennoscandia and Siberia, with a gradual decrease in genome-wide inbreeding

coefficients ($F_{ROH} > 100$ kb) from northern Sweden to eastern Siberia (Figure 5). The average ROH was ~1.47-fold longer in northern Fennoscandia and extensive inbreeding was detected in numerous northern Scandinavian individuals, spanning almost entire scaffolds. In northern Sweden, the extent of inbreeding due to very recent common ancestors (104.7 Mb) was comparable to the levels found in a highly inbred gray wolf (*Canis lupus*) population with ROH reaching 95.8 Mb, where entire chromosomes were also homozygous [81].

Genome-wide heterozygosity was consistent with F_{ROH} estimates, revealing significantly lower levels in northern Sweden compared to the Siberian samples (Figure 4). However, the northern Norwegian and Kola samples had intermediate values and did not differ significantly from any of the other samples. Where F_{ROH} provides a clear estimate of inbreeding due to common ancestors, genome-wide heterozygosity is influenced by a population's entire demographic history, such as bottlenecks, genetic drift, linkage, dispersal with gene flow and selection [82], as well as life history strategies [83]. Nonetheless, a clear pattern consistent with a stepping-stone model of population structure is observed [84], where decreasing heterozygosity westwards through the Fennoscandian Peninsula implies increased population fragmentation and reduced gene flow. This pattern was consistent throughout the entire history of inbreeding inferred by F_{ROH} , becoming more extreme with inbreeding due to recent common ancestors (>8 Mb).

Interestingly, there was a gradual drop in inbreeding due to recent common ancestors eastwards, where average ROH was 38.25% shorter in Kola than in northern Scandinavia. Although, at present, the situation of the Arctic fox on the Kola Peninsula is probably similar to that of northern Scandinavia, it is likely that the population decline happened later than further west, which would explain a lower level of inbreeding. In addition, the sample from the Kola Peninsula dates from the 1990s and, thus, does not reflect the inbreeding in the present-day population. Average ROH were 33.92% shorter in eastern Siberia than in the Kola individual; however, it is important to note that ROH in the Siberian samples are based on limited sample sizes, therefore, results may not be representative.

Nevertheless, these results strongly suggest that subpopulations within northern Fennoscandia are becoming increasingly fragmented and isolated over time. Gene flow from Siberia over the western part of Russia into Kola and northern Scandinavia is thus limited, effectively cutting Scandinavia off from the historically circumpolar distribution. Dalén et al. [43] found low levels of dispersal between Scandinavia, the Kola Peninsula and northwestern Russia, suggested to be driven by recent fragmentation. Moreover, Nyström et al. [39] observed a clear reduction in genetic variation in Scandinavia following the severe 19th century bottleneck. Consequences of fragmentation were evident as genetic differentiation doubled between Scandinavia and northern Russia. Since the time of these studies, the northern Scandinavian subpopulations may have deteriorated even further, with increased isolation and inbreeding over the past 16 years.

Along with the overall pattern described here, we observed a historical trend where inbreeding, due to common ancestors 45–850 generations back, increased southward and westwards towards Scandinavia (Figure 5). Relative to the low levels of inbreeding due to recent common ancestors (<45 generations), Siberian samples had a high proportion of inbreeding due to common ancestors 45–850 generations back (Figure 5a). A similar pattern was seen in northern Norway, where a higher proportion of inbreeding dated back to common ancestors in the deep past (45–850 generations), compared to recent years (<10 generations; Figure 5b). This was unexpected, as most inbreeding due to common ancestors was predicted to trace back to the past 45 generations in northern Scandinavia, corresponding to the population bottleneck of the late 19th century. This may suggest some recent gene flow into these subpopulations, erasing the signature of recent inbreeding (<10 generations). In contrast, in northern Sweden, levels of inbreeding due to common ancestors dating back to 10 generations back were slightly higher than for inbreeding from 45–850 generations back. However, the proportion of inbreeding due to common ancestors

tracing back to 10–45 generations was much less apparent (Figure 5b). Although speculative, this unexpected considerable inbreeding in the deep past may correspond to a yet unidentified population bottleneck predating the persecution in the 19th century in the northern Fennoscandian and Siberian populations dating back some 45–850 generations ago. Scandinavia has undergone several warming periods over the past 4000 years, most recently for 200 years between 1200–1400 AD [85], potentially coinciding with this inbreeding event.

A clear differentiation was observed between the northern Scandinavian and Siberian genomes (Figure 3), with greater genetic variation evident within Siberia, an expected characteristic of an outbred and panmictic meta-population. Interestingly, the oldest Vindelfjällen sample sequenced from 1989 clustered with the Varanger sample, which may be a signature of higher connectivity in the past. Moreover, the PCA illustrated that even though the samples were collected over a relatively large time frame (i.e., some range), there is limited temporal genetic change, which is apparent from the clustering of Scandinavian samples. Further, the strong divergence from Siberia adds evidence that little to no gene flow has occurred from east of the Kola Peninsula in recent years. The rather large geographical gap in our sampling, lacking arctic foxes from the western range of the Russian Arctic, may have contributed to this apparent divergence.

Another consequence of isolation at low population size is the accumulation of deleterious mutations. Hasselgren et al. [86] highlighted an important role of deleterious mutations influencing fitness in the southernmost subpopulation in Sweden. Here, we found that northern Fennoscandia harbored significantly more homozygous deleterious mutations, while Siberia had more deleterious variants in heterozygous state, for both moderately and strongly deleterious mutations. These results are consistent with the bottleneck history and estimated inbreeding, leading to deleterious variation becoming increasingly expressed as recessive variants are unmasked. Moreover, it has been discussed in several recent studies that large populations will have a high mutational load; however, the high proportion of recessive deleterious alleles will be masked in heterozygous state [87,88], which has been confirmed by numerous empirical studies [55–58]. Our results are thus consistent with these findings and further highlight the importance of considering measures of inbreeding and mutational load in small and isolated Fennoscandian arctic fox populations.

Our results provide compelling evidence that population fragmentation leads to genome erosion. In order to understand this issue in more depth, a next step should explore to which extent ROH contribute to the expression of deleterious mutations and to what degree inbreeding depression affects the fitness of the northern Fennoscandian arctic fox populations. Candidate mutations that contribute to inbreeding depression within ROH should be identified [86,89], and the efficiency of purging investigated [22]. Furthermore, the distribution of ROH could allow us to infer the timing of fragmentation in these arctic fox populations, that lack long-term monitoring data, particularly on the Kola Peninsula [49,90]. A temporal approach [91] may also illustrate the genetic response to historical events [57,58,92,93].

5. Conclusions

Our study highlights the genomic consequences of isolation and long-term low population size in the arctic fox populations of northern Fennoscandia, suggesting more severe population decline and genome erosion than identified in previous studies. While there was a past connection between northern Scandinavian foxes over the Kola Peninsula and the White Sea to the large populations in the Russian Arctic, [40,48], gene flow into Scandinavia via the Kola Peninsula appears to have been drastically reduced in the recent past (i.e., ~20 years). In addition to the very small population sizes, the dramatic decrease in sea ice on the White Sea in the first part of the last century may have contributed to this geographical isolation [49]. The arctic fox subpopulations on the Varanger Peninsula and

Kola Peninsulas are exceptionally isolated and in low abundance [49,51]. In situ conservation measures such as supplemental feeding should be prioritized in a stepping-stone fashion to restore connectivity and promote natural dispersal [44], along with ex situ measures such as restocking high priority areas with healthy individuals from nearby areas or with captive-bred individuals to increase heterozygosity and reduce the frequency of detrimental variation. Such intensive measures are, since 2018, implemented on the Varanger Peninsula. However, functional genomic regions should first be screened for population-specific deleterious mutations to determine the likelihood of genetic rescue via heterosis versus the risk for introducing additional deleterious variants, leading to potential unintended fitness consequences (e.g., [86]).

Fragmentation of Arctic populations can be strengthened by invasion of boreal species. Following warming in the Arctic, and intensified human activities, the red fox has encroached into the low-Arctic tundra of Vindelfjällen, the Varanger Peninsula and some places in Siberia [94–96]. These areas are vital for maintaining connectivity between Scandinavia and the Russian Arctic, and with high levels of inbreeding detected, this invasion may be inhibiting dispersal of arctic foxes among subpopulations [42]. To reduce this risk, red fox culling could be implemented in high priority areas in the western range of the Russian Arctic [49]. Arctic foxes may be unable to track climate-induced habitat change [97], thus, isolated refugia is a likely future consequence of a warming Arctic.

Given the extent of historical and recent inbreeding, the northern Fennoscandian population is likely to continue to genetically deteriorate and decline. The arctic fox has a history of low genetic variation [98,99], hypothesized to result from repeated isolation in refugia during interglacial periods or local extinctions during range contraction [40,47]. Based on our results, this low genetic variation could also be a consequence of historical demographic bottlenecks following the last glacial maximum and preceding the late 19th century bottleneck. To disentangle the drivers of past population decline and the historical events shaping present day genetic variation, effective population size (N_e) models should be built to investigate demographic processes over the past 2000 years. Moreover, as the abundance of food resource has a considerable influence on arctic fox demography, it would be particularly relevant to explore how the demographic history of the Norwegian lemming interplays with climatic variation and history of arctic foxes in Fennoscandia. As whole-genome sequencing becomes cheaper and more accessible, complex models of population history may provide answers to the unpredictable population oscillations in Arctic regions. Arctic species must withstand extensive climatic variation and resource fluctuations [100]. With accelerated climate warming, habitat fragmentation and shifting ecosystem dynamics, understanding how species respond ecologically and genetically to these challenges is thus crucial for conservation management.

Supplementary Materials: The following supporting information can be downloaded at: <https://www.mdpi.com/article/10.3390/genes13112124/s1>, Figure S1: Proportion of deleterious variants in arctic foxes of the northern Sweden, northern Norway, Kola, Yamal, Taymyr and eastern Siberia sample areas.; Table S1: Genome-based individual genetic variation in the sample areas of northern Fennoscandia and Siberia.; Table S2: Results of the post hoc Dunn's tests showing significance of difference of genome-wide heterozygosity among northern Sweden, northern Norway, Kola, Yamal, Taymyr and eastern Siberia.; Table S3: Results of the post hoc Dunn's tests, showing significance of difference in inbreeding due to common ancestors less than 10 generations ago among northern Sweden, northern Norway, Kola, Yamal, Taymyr and eastern Siberia.; Table S4: Results of the post hoc Dunn's tests, showing significance of difference in inbreeding due to common ancestors up to 45 generations back among northern Sweden, northern Norway, Kola, Yamal, Taymyr and eastern Siberia.; Table S5: Results of the post hoc Dunn's tests showing significance of difference in inbreeding due to common ancestors 850 generations among northern Sweden, northern Norway, Kola, Yamal, Taymyr and eastern Siberia.

Author Contributions: Conceptualization, K.N. and M.H.; methodology, N.D., J.v.S. and L.D.; software, N.D., J.v.S. and L.D.; validation, C.A.C. and M.H.; formal analysis, C.A.C.; investigation, C.A.C.; resources, K.N., A.A., J.F.W., A.L., N.E.E., Ø.F., D.E., A.S., N.S.; data curation, C.A.C., M.H.,

N.D. and J.v.S.; writing—original draft preparation, C.A.C.; writing—review and editing, K.N., M.H., N.D., N.E.E., Ø.F., D.E., A.S., N.S.; visualization, C.A.C.; supervision, K.N. and M.H.; project administration, K.N.; funding acquisition, K.N., A.A., N.D., N.E.E. All authors have read and agreed to the published version of the manuscript.

Funding: This research was funded by Swedish Research Council FORMAS, grant number 2015-1526 and 2020-01402; Norwegian Research Council, grant number 244557; the EU-Life to SEFALO and SEFALO+; Göran Gustafssons stiftelse för natur och miljö i Lappland; EU/Interreg Sweden-Norway to Felles Fjellrev I, grant number 304-4159-13; EU/Interreg Sweden-Norway to Felles Fjellrev II, grant number 20200939; EU/Interreg Nord to Felles Fjellrev Nord I, grant number 20201086, EU/Interreg Nord to Felles Fjellrev Nord II grant number 0203530; Carl Tryggers Foundation grant number CTS 19: 257. The Article Processing Charge was funded by Swedish Research Council/Stockholm University”.

Institutional Review Board Statement: Ear-tagging in Sweden was accomplished within the ethical permit from the Swedish Board of Agriculture and additional allowances from Swedish Environmental Protection Agency (A130-07, A131-07, A36-11, A18-14, A19-14, 412-7884-07 NV, NV-01959-14).

Informed Consent Statement: Not applicable.

Data Availability Statement: The whole-genome sequencing data are available to download at the European Nucleotide Archive (ENA) under accession number PRJEB55788.

Acknowledgments: We express our gratitude to rangers and volunteers contributing to sample collection in Sweden and Norway. The authors acknowledge support from the National Genomics Infrastructure in Stockholm funded by Science for Life Laboratory, the Knut and Alice Wallenberg Foundation and the Swedish Research Council, and SNIC/Uppsala Multidisciplinary Center for Advanced Computational Science for assistance with massively parallel sequencing and access to the UPPMAX computational infrastructure.

Conflicts of Interest: The authors declare no conflict of interest.

References

- Descamps, S.; Aars, J.; Fuglei, E.; Kovacs, K.M.; Lydersen, C.; Pavlova, O.; Pedersen, Å.Ø.; Ravolainen, V.; Strøm, H. Climate Change Impacts on Wildlife in a High Arctic Archipelago—Svalbard, Norway. *Glob. Change Biol.* **2017**, *23*, 490–502. <https://doi.org/10.1111/gcb.13381>.
- Huntington, H.P.; Boyle, M.; Flowers, G.E.; Weatherly, J.W.; Hamilton, L.C.; Hinzman, L.; Gerlach, C.; Zulueta, R.; Nicolson, C.; Overpeck, J. The Influence of Human Activity in the Arctic on Climate and Climate Impacts. *Clim. Change* **2007**, *82*, 77. <https://doi.org/10.1007/s10584-006-9162-y>.
- Le Moullec, M.; Bender, M. Impacts of Global Warming on Arctic Biota. In *Global Arctic: An Introduction to the Multifaceted Dynamics of the Arctic*; Springer: Berlin/Heidelberg, Germany, 2021; ISBN 978-3-030-81252-2.
- Rundqvist, S.; Hedenås, H.; Sandström, A.; Emanuelsson, U.; Eriksson, H.; Jonasson, C.; Callaghan, T.V. Tree and Shrub Expansion over the Past 34 Years at the Tree-Line near Abisko, Sweden. *Ambio* **2011**, *40*, 683–692. <https://doi.org/10.1007/s13280-011-0174-0>.
- Speed, J.D.M.; Chimal-Ballesteros, J.A.; Martin, M.D.; Barrio, I.C.; Vuorinen, K.E.M.; Soininen, E.M. Will Borealization of Arctic Tundra Herbivore Communities Be Driven by Climate Warming or Vegetation Change? *Glob. Change Biol.* **2021**, *27*, 6568–6577. <https://doi.org/10.1111/gcb.15910>.
- Wright, S. Evolution in Mendelian Populations. *Genetics* **1931**, *16*, 97–159.
- Hanski, I. Metapopulation Dynamics. *Nature* **1998**, *396*, 41–49. <https://doi.org/10.1038/23876>.
- Nei, M.; Maruyama, T.; Chakraborty, R. The Bottleneck Effect and Genetic Variability in Populations. *Evolution* **1975**, *29*, 1–10. <https://doi.org/10.2307/2407137>.
- Wright, S. *Evolution and the Genetics of Populations, Volume 3: Experimental Results and Evolutionary Deductions*; University of Chicago Press: Chicago, IL, USA, 1984; ISBN 978-0-226-91040-6.
- Stephens, P.A.; Sutherland, W.J.; Freckleton, R.P. What Is the Allee Effect? *Oikos* **1999**, *87*, 185–190. <https://doi.org/10.2307/3547011>.
- Caughley, G. Directions in Conservation Biology. *J. Anim. Ecol.* **1994**, *63*, 215–244. <https://doi.org/10.2307/5542>.
- Gilpin, M.E.; Soulé, M.E. Minimum Viable Populations: Processes of Species Extinction. In *Conservation Biology. The Science of Scarcity and Diversity*; Sinauer Assoc.: Sunderland, MA, USA, 1986.
- Saccheri, I.; Kuussaari, M.; Kankare, M.; Vikman, P.; Fortelius, W.; Hanski, I. Inbreeding and Extinction in a Butterfly Metapopulation. *Nature* **1998**, *392*, 491–494. <https://doi.org/10.1038/33136>.

14. Blomqvist, D.; Pauliny, A.; Larsson, M.; Flodin, L.-Å. Trapped in the Extinction Vortex? Strong Genetic Effects in a Declining Vertebrate Population. *BMC Evol. Biol.* **2010**, *10*, 33. <https://doi.org/10.1186/1471-2148-10-33>.
15. Palomares, F.; Godoy, J.A.; López-Bao, J.V.; Rodríguez, A.; Roques, S.; Casas-Marce, M.; Revilla, E.; Delibes, M. Possible Extinction Vortex for a Population of Iberian Lynx on the Verge of Extirpation. *Conserv. Biol.* **2012**, *26*, 689–697. <https://doi.org/10.1111/j.1523-1739.2012.01870.x>.
16. Haldane, J.B.S. The Effect of Variation of Fitness. *Am. Nat.* **1937**, *71*, 337–349. <https://doi.org/10.1086/280722>.
17. Charlesworth, B.; Charlesworth, D. The Genetic Basis of Inbreeding Depression. *Genet. Res.* **1999**, *74*, 329–340. <https://doi.org/10.1017/S0016672399004152>.
18. Keller, L.F.; Waller, D.M. Inbreeding Effects in Wild Populations. *Trends Ecol. Evol.* **2002**, *17*, 230–241. [https://doi.org/10.1016/S0169-5347\(02\)02489-8](https://doi.org/10.1016/S0169-5347(02)02489-8).
19. Lynch, M.; Walsh, B. *Genetics and Analysis of Quantitative Traits*; Sinauer: Sunderland, MA, USA, 1998; Volume 1.
20. Darwin, C. Sexual Selection in Relation to Monkeys. *Nature* **1876**, *15*, 18–19. <https://doi.org/10.1038/015018a0>.
21. Whiteley, A.R.; Fitzpatrick, S.W.; Funk, W.C.; Tallmon, D.A. Genetic Rescue to the Rescue. *Trends Ecol. Evol.* **2015**, *30*, 42–49. <https://doi.org/10.1016/j.tree.2014.10.009>.
22. Hedrick, P.W.; Garcia-Dorado, A. Understanding Inbreeding Depression, Purging, and Genetic Rescue. *Trends Ecol. Evol.* **2016**, *31*, 940–952. <https://doi.org/10.1016/j.tree.2016.09.005>.
23. Hasselgren, M.; Norén, K. Inbreeding in Natural Mammal Populations: Historical Perspectives and Future Challenges. *Mammal. Rev.* **2019**, *49*, 369–383. <https://doi.org/10.1111/mam.12169>.
24. Roelke, M.E.; Martenson, J.S.; O'Brien, S.J. The Consequences of Demographic Reduction and Genetic Depletion in the Endangered Florida Panther. *Curr. Biol.* **1993**, *3*, 340–350. [https://doi.org/10.1016/0960-9822\(93\)90197-V](https://doi.org/10.1016/0960-9822(93)90197-V).
25. Liberg, O.; Andrén, H.; Pedersen, H.-C.; Sand, H.; Sejberg, D.; Wabakken, P.; Åkesson, M.; Bensch, S. Severe Inbreeding Depression in a Wild Wolf *Canis Lupus* Population. *Biol. Lett.* **2005**, *1*, 17–20. <https://doi.org/10.1098/rsbl.2004.0266>.
26. Rääkkönen, J.; Vucetich, J.A.; Peterson, R.O.; Nelson, M.P. Congenital Bone Deformities and the Inbred Wolves (*Canis lupus*) of Isle Royale. *Biol. Conserv.* **2009**, *142*, 1025–1031. <https://doi.org/10.1016/j.biocon.2009.01.014>.
27. Pemberton, J.M.; Ellis, P.E.; Pilkington, J.G.; Bérénos, C. Inbreeding Depression by Environment Interactions in a Free-Living Mammal Population. *Heredity* **2017**, *118*, 64–77. <https://doi.org/10.1038/hdy.2016.100>.
28. Åkesson, M.; Liberg, O.; Sand, H.; Wabakken, P.; Bensch, S.; Flagstad, Ø. Genetic Rescue in a Severely Inbred Wolf Population. *Mol. Ecol.* **2016**, *25*, 4745–4756.
29. Hasselgren, M.; Angerbjörn, A.; Eide, N.E.; Erlandsson, R.; Flagstad, Ø.; Landa, A.; Wallén, J.; Norén, K. Genetic Rescue in an Inbred Arctic Fox (*Vulpes lagopus*) Population. *Proc. R. Soc. B Biol. Sci.* **2018**, *285*, 20172814. <https://doi.org/10.1098/rspb.2017.2814>.
30. Kardos, M.; Taylor, H.R.; Ellegren, H.; Luikart, G.; Allendorf, F.W. Genomics Advances the Study of Inbreeding Depression in the Wild. *Evol. Appl.* **2016**, *9*, 1205–1218. <https://doi.org/10.1111/eva.12414>.
31. Broman, K.W.; Weber, J.L. Long Homozygous Chromosomal Segments in Reference Families from the Centre d'Étude Du Polymorphisme Humain. *Am. J. Hum. Genet.* **1999**, *65*, 1493–1500. <https://doi.org/10.1086/302661>.
32. Allendorf, F.W. Genetics and the Conservation of Natural Populations: Allozymes to Genomes. *Mol. Ecol.* **2017**, *26*, 420–430. <https://doi.org/10.1111/mec.13948>.
33. McQuillan, R.; Leutenegger, A.-L.; Abdel-Rahman, R.; Franklin, C.S.; Pericic, M.; Barac-Lauc, L.; Smolej-Narancic, N.; Janicijevic, B.; Polasek, O.; Tenesa, A.; et al. Runs of Homozygosity in European Populations. *Am. J. Hum. Genet.* **2008**, *83*, 359–372. <https://doi.org/10.1016/j.ajhg.2008.08.007>.
34. Robinson, J.A.; Rääkkönen, J.; Vucetich, L.M.; Vucetich, J.A.; Peterson, R.O.; Lohmueller, K.E.; Wayne, R.K. Genomic Signatures of Extensive Inbreeding in Isle Royale Wolves, a Population on the Threshold of Extinction. *Sci. Adv.* **2019**, *5*, eaau0757. <https://doi.org/10.1126/sciadv.aau0757>.
35. Robinson, J.A.; Ortega-Del Vecchyo, D.; Fan, Z.; Kim, B.Y.; vonHoldt, B.M.; Marsden, C.D.; Lohmueller, K.E.; Wayne, R.K. Genomic Flatlining in the Endangered Island Fox. *Curr. Biol.* **2016**, *26*, 1183–1189. <https://doi.org/10.1016/j.cub.2016.02.062>.
36. Saremi, N.F.; Supple, M.A.; Byrne, A.; Cahill, J.A.; Coutinho, L.L.; Dalén, L.; Figueiró, H.V.; Johnson, W.E.; Milne, H.J.; O'Brien, S.J.; et al. Puma Genomes from North and South America Provide Insights into the Genomic Consequences of Inbreeding. *Nat. Commun.* **2019**, *10*, 4769. <https://doi.org/10.1038/s41467-019-12741-1>.
37. Loison, A.; Strand, O.; Linnell, J.D.C. Effect of Temporal Variation in Reproduction on Models of Population Viability: A Case Study for Remnant Arctic Fox (*Alopex lagopus*) Populations in Scandinavia. *Biol. Conserv.* **2001**, *97*, 347–359. [https://doi.org/10.1016/S0006-3207\(00\)00134-8](https://doi.org/10.1016/S0006-3207(00)00134-8).
38. Lönnberg, E. *Fjällrävstammen i Sverige 1926*; Royal Swedish Academy of Sciences: Uppsala, Sweden, 1927.
39. Nyström, V.; Angerbjörn, A.; Dalén, L. Genetic Consequences of a Demographic Bottleneck in the Scandinavian Arctic Fox. *Oikos* **2006**, *114*, 84–94.
40. Larsson, P.; von Seth, J.; Hagen, I.J.; Götherström, A.; Androsov, S.; Germonpré, M.; Bergfeldt, N.; Fedorov, S.; Eide, N.E.; Sokolova, N.; et al. Consequences of Past Climate Change and Recent Human Persecution on Mitogenomic Diversity in the Arctic Fox. *Philos. Trans. R. Soc. B Biol. Sci.* **2019**, *374*, 20190212. <https://doi.org/10.1098/rstb.2019.0212>.
41. Hersteinsson, P.; MacDonald, D.W. Interspecific Competition and the Geographical Distribution of Red and Arctic Foxes *Vulpes vulpes* and *Alopex lagopus*. *Oikos* **1992**, *64*, 505. <https://doi.org/10.2307/3545168>.
42. Tannerfeldt, M.; Elmhagen, B.; Angerbjörn, A. Exclusion by Interference Competition? The Relationship between Red and Arctic Foxes. *Oecologia* **2002**, *132*, 213–220. <https://doi.org/10.1007/s00442-002-0967-8>.

43. Dalén, L.; Kvaløy, K.; Linnell, J.D.C.; Elmhagen, B.; Strand, O.; Tannerfeldt, M.; Henttonen, H.; Fuglei, E.; Landa, A.; Angerbjörn, A. Population Structure in a Critically Endangered Arctic Fox Population: Does Genetics Matter? *Mol. Ecol.* **2006**, *15*, 2809–2819. <https://doi.org/10.1111/j.1365-294X.2006.02983.x>.
44. Hemphill-Keeling, E.J.; Flagstad, Ø.; Jensen, H.; Norén, K.; Wallén, J.F.; Landa, A.; Angerbjörn, A.; Eide, N.E. Genetic Consequences of Conservation Action: Restoring the Arctic Fox (*Vulpes lagopus*) Population in Scandinavia. *Biol. Conserv.* **2020**, *248*, 108534. <https://doi.org/10.1016/j.biocon.2020.108534>.
45. Tarroux, A.; Berteaux, D.; Bêty, J. Northern Nomads: Ability for Extensive Movements in Adult Arctic Foxes. *Polar Biol.* **2010**, *33*, 1021–1026. <https://doi.org/10.1007/s00300-010-0780-5>.
46. Herfindal, I.; Linnell, J.D.C.; Elmhagen, B.; Andersen, R.; Eide, N.E.; Frafjord, K.; Henttonen, H.; Kaikusalo, A.; Mela, M.; Tannerfeldt, M.; et al. Population Persistence in a Landscape Context: The Case of Endangered Arctic Fox Populations in Fennoscandia. *Ecography* **2010**, *33*, 932–941. <https://doi.org/10.1111/j.1600-0587.2009.05971.x>.
47. Norén, K.; Dalén, L.; Flagstad, Ø.; Berteaux, D.; Wallén, J.; Angerbjörn, A. Evolution, Ecology and Conservation—Revisiting Three Decades of Arctic Fox Population Genetic Research. *Polar Res.* **2017**, *36*, 4. <https://doi.org/10.1080/17518369.2017.1325135>.
48. Dalén, L.; Götherström, A.; Tannerfeldt, M.; Angerbjörn, A. Is the Endangered Fennoscandian Arctic Fox (*Alopex lagopus*) Population Genetically Isolated? *Biol. Conserv.* **2002**, *105*, 171–178. [https://doi.org/10.1016/S0006-3207\(01\)00180-X](https://doi.org/10.1016/S0006-3207(01)00180-X).
49. Tirronen, K.; Ehrich, D.; Panchenko, D.; Dalén, L.; Angerbjörn, A. The Arctic Fox (*Vulpes lagopus* L.) on the Kola Peninsula (Russia): Silently Disappearing in the Mist of Data Deficiency? *Polar Biol.* **2021**, *44*, 913–925. <https://doi.org/10.1007/s00300-021-02847-y>.
50. Strand, O.; Landa, A.; Linnell, J.D.C.; Zimmermann, B.; Skogland, T. Social Organization and Parental Behavior in the Arctic Fox. *J. Mammal.* **2000**, *81*, 223–233. [https://doi.org/10.1644/1545-1542\(2000\)081<0223:SOAPBI>2.0.CO;2](https://doi.org/10.1644/1545-1542(2000)081<0223:SOAPBI>2.0.CO;2).
51. Ims, R.A.; Killengreen, S.T.; Ehrich, D.; Flagstad, Ø.; Hamel, S.; Henden, J.-A.; Jensvoll, I.; Yoccoz, N.G. Ecosystem Drivers of an Arctic Fox Population at the Western Fringe of the Eurasian Arctic. *Polar Res.* **2017**, *36*, 8. <https://doi.org/10.1080/17518369.2017.1323621>.
52. Norén, K.; Godoy, E.; Dalén, L.; Meijer, T.; Angerbjörn, A. Inbreeding Depression in a Critically Endangered Carnivore. *Mol. Ecol.* **2016**, *25*, 3309–3318. <https://doi.org/10.1111/mec.13674>.
53. Hasselgren, M.; Dussex, N.; von Seth, J.; Angerbjörn, A.; Olsen, R.-A.; Dalén, L.; Norén, K. Genomic and Fitness Consequences of Inbreeding in an Endangered Carnivore. *Mol. Ecol.* **2021**, *30*, 2790–2799. <https://doi.org/10.1111/mec.15943>.
54. Lotsander, A.; Hasselgren, M.; Larm, M.; Wallén, J.; Angerbjörn, A.; Norén, K. Low Persistence of Genetic Rescue across Generations in the Arctic Fox (*Vulpes lagopus*). *J. Hered.* **2021**, *112*, 276–285. <https://doi.org/10.1093/jhered/esab011>.
55. Xue, Y.; Prado-Martinez, J.; Sudmant, P.H.; Narasimhan, V.; Ayub, Q.; Szpak, M.; Frandsen, P.; Chen, Y.; Yngvadottir, B.; Cooper, D.N.; et al. Mountain Gorilla Genomes Reveal the Impact of Long-Term Population Decline and Inbreeding. *Science* **2015**, *348*, 242–245. <https://doi.org/10.1126/science.aaa3952>.
56. Grossen, C.; Guillaume, F.; Keller, L.F.; Croll, D. Purging of Highly Deleterious Mutations through Severe Bottlenecks in Alpine Ibex. *Nat. Commun.* **2020**, *11*, 1001. <https://doi.org/10.1038/s41467-020-14803-1>.
57. Dussex, N.; Valk, T.V.D.; Morales, H.E.; Wheat, C.W.; Díez-del-Molino, D.; Seth, J.V.; Foster, Y.; Kutschera, V.E.; Guschanski, K.; Rhie, A.; et al. Population Genomics of the Critically Endangered Kākāpō. *Cell Genom.* **2021**, *10*, e1–e9. <https://doi.org/10.1016/j.xgen.2021.100002>.
58. von Seth, J.; Dussex, N.; Díez-del-Molino, D.; van der Valk, T.; Kutschera, V.E.; Kierczak, M.; Steiner, C.C.; Liu, S.; Gilbert, M.T.P.; Sinding, M.-H.S.; et al. Genomic Insights into the Conservation Status of the World’s Last Remaining Sumatran Rhinoceros Populations. *Nat. Commun.* **2021**, *12*, 2393. <https://doi.org/10.1038/s41467-021-22386-8>.
59. Rvbase 3.0. Available online: <https://rvbase30.miljodirektoratet.no/> (accessed on 5 September 2022).
60. Walker, D.; Reynolds, M.; Daniëls, F.; Einarsson, E.; Elvebakk, A.; Gould, W.; Katenin, A.; Kholod, S.; Markon, C.; Melnikov, E.; et al. The Circumpolar Arctic Vegetation Map. *J. Veg. Sci.* **2005**, *16*, 267–282. <https://doi.org/10.1111/j.1654-1103.2005.tb02365.x>.
61. Angerbjörn, A.; Eide, N.E.; Dalén, L.; Elmhagen, B.; Hellström, P.; Ims, R.A.; Killengreen, S.; Landa, A.; Meijer, T.; Mela, M.; et al. Carnivore Conservation in Practice: Replicated Management Actions on a Large Spatial Scale. *J. Appl. Ecol.* **2013**, *50*, 59–67.
62. Kutschera, V.; Kierczak, M.; Valk, T.; von Seth, J.; Dussex, N.; Lord, E.; Dehasque, M.; Stanton, D.; Khoonsari, P.; Nystedt, B.; et al. GenErode: A Bioinformatics Pipeline to Investigate Genome Erosion in Endangered and Extinct Species. **2022**, *23*, 228.
63. Bolger, A.M.; Lohse, M.; Usadel, B. Trimmomatic: A Flexible Trimmer for Illumina Sequence Data. *Bioinformatics* **2014**, *30*, 2114–2120.
64. Li, H.W. Aligning Sequence Reads, Clone Sequences and Assembly Contigs with BWA-MEM. *arXiv* **2013**, arXiv:1303.3997.
65. Li, H.; Handsaker, B.; Wysoker, A.; Fennell, T.; Ruan, J.; Homer, N.; Marth, G.; Abecasis, G.; Durbin, R. The Sequence Alignment/Map Format and SAMtools. *Bioinformatics* **2009**, *25*, 2078–2079.
66. Picard Tools—By Broad Institute. Available online: <https://broadinstitute.github.io/picard/> (accessed on 4 October 2022).
67. GATK. Available online: <https://gatk.broadinstitute.org/hc/en-us> (accessed on 11 January 2022).
68. McKenna, A.; Hanna, M.; Banks, E.; Sivachenko, A.; Cibulskis, K.; Kernysky, A.; Garimella, K.; Altshuler, D.; Gabriel, S.; Daly, M.; et al. The Genome Analysis Toolkit: A MapReduce Framework for Analyzing next-Generation DNA Sequencing Data. *Genome Res.* **2010**, *20*, 1297–1303.
69. Okonechnikov, K.; Conesa, A.; García-Alcalde, F. Qualimap 2: Advanced Multi-Sample Quality Control for High-Throughput Sequencing Data. *Bioinformatics* **2016**, *32*, 292–294.
70. Li, H. A Statistical Framework for SNP Calling, Mutation Discovery, Association Mapping and Population Genetical Parameter Estimation from Sequencing Data. *Bioinformatics* **2011**, *27*, 2987–2993.
71. Quinlan, A.R.; Hall, I.M. BEDTools: A Flexible Suite of Utilities for Comparing Genomic Features. *Bioinformatics* **2010**, *26*, 841–842.

72. Purcell, S.; Neale, B.; Todd-Brown, K.; Thomas, L.; Ferreira, M.A.R.; Bender, D.; Maller, J.; Sklar, P.; de Bakker, P.I.W.; Daly, M.J.; et al. PLINK: A Tool Set for Whole-Genome Association and Population-Based Linkage Analyses. *Am. J. Hum. Genet.* **2007**, *81*, 559–575.
73. R Core Team. *R: A Language and Environment for Statistical Computing*; R Foundation for Statistical Computing: Vienna, Austria, 2021.
74. Johnson, P.L.; Slatkin, M. Inference of Population Genetic Parameters in Metagenomics: A Clean Look at Messy Data. *Genome Res.* **2006**, *16*, 1320–1327.
75. Haubold, B.; Pfaffelhuber, P.; Lynch, M. MIRho—A Program for Estimating the Population Mutation and Recombination Rates from Shotgun-Sequenced Diploid Genomes. *Mol. Ecol.* **2010**, *19*, 277–284. <https://doi.org/10.1111/j.1365-294X.2009.04482.x>.
76. Nielsen, R.; Korneliussen, T.; Albrechtsen, A.; Li, Y.; Wang, J. SNP Calling, Genotype Calling, and Sample Allele Frequency Estimation from New-Generation Sequencing Data. *PLoS ONE* **2012**, *7*, e37558.
77. Hellmann, I.; Mang, Y.; Gu, Z.; Li, P.; Francisco, M.; Clark, A.G.; Nielsen, R. Population Genetic Analysis of Shotgun Assemblies of Genomic Sequences from Multiple Individuals. *Genome Res.* **2008**, *18*, 1020–1029.
78. Kukekova, A.V.; Trut, L.N.; Oskina, I.N.; Johnson, J.L.; Temnykh, S.V.; Kharlamova, A.V.; Shepeleva, D.V.; Gulievich, R.G.; Shikhevich, S.G.; Graphodatsky, A.S.; et al. A Meiotic Linkage Map of the Silver Fox, Aligned and Compared to the Canine Genome. *Genome Res.* **2007**, *17*, 387–399.
79. Kukekova, A.V.; Johnson, J.L.; Xiang, X.; Feng, S.; Liu, S.; Rando, H.M.; Kharlamova, A.V.; Herbeck, Y.; Serdyukova, N.A.; Xiong, Z.; et al. Red Fox Genome Assembly Identifies Genomic Regions Associated with Tame and Aggressive Behaviours. *Nat. Ecol. Evol.* **2018**, *2*, 1479–1491. <https://doi.org/10.1038/s41559-018-0611-6>.
80. Kassambara, A. Rstatix: Pipe-Friendly Framework for Basic Statistical Tests 2021. R Package Rstatix Version 0.6.0. Available online: <https://cran.r-project.org/web/packages/spacyr/index.html> (accessed on 13 October 2022).
81. Kardos, M.; Åkesson, M.; Fountain, T.; Flagstad, Ø.; Liberg, O.; Olason, P.; Sand, H.; Wabakken, P.; Wikenros, C.; Ellegren, H. Genomic Consequences of Intensive Inbreeding in an Isolated Wolf Population. *Nat. Ecol. Evol.* **2018**, *2*, 124–131. <https://doi.org/10.1038/s41559-017-0375-4>.
82. Buffalo, V.; Coop, G. Estimating the Genome-Wide Contribution of Selection to Temporal Allele Frequency Change. *Proc. Natl. Acad. Sci. USA* **2020**, *117*, 20672–20680. <https://doi.org/10.1073/pnas.1919039117>.
83. Brüniche-Olsen, A.; Kellner, K.F.; Anderson, C.J.; DeWoody, J.A. Runs of Homozygosity Have Utility in Mammalian Conservation and Evolutionary Studies. *Conserv. Genet.* **2018**, *19*, 1295–1307. <https://doi.org/10.1007/s10592-018-1099-y>.
84. Kimura, M.; Weiss, G.H. The Stepping Stone Model of Population Structure and the Decrease of Genetic Correlation with Distance. *Genetics* **1964**, *49*, 561–576.
85. Nesje, A. Latest Pleistocene and Holocene Alpine Glacier Fluctuations in Scandinavia. *Quat. Sci. Rev.* **2009**, *28*, 2119–2136. <https://doi.org/10.1016/j.quascirev.2008.12.016>.
86. Hasselgren, M.; Cockerill, C.A.; Wallén, J.F.; Angerbjörn, A.; Dalén, L.; Dussex, N.; D.; Eide, N.E.; Flagstad, Ø.; Landa, A.; von Seth, J.; et al. Genomic Consequences of Reintroductions from a Captive Breeding Station—A Replicated Evaluation. *In prep.*
87. Van der Valk, T.; Manuel, M. de; Marques-Bonet, T.; Guschanski, K. Estimates of Genetic Load in Small Populations Suggest Extensive Purging of Deleterious Alleles. *bioRxiv* **2019**. <https://doi.org/10.1101/696831>.
88. Kyriazis, C.C.; Wayne, R.K.; Lohmueller, K.E. Strongly Deleterious Mutations Are a Primary Determinant of Extinction Risk Due to Inbreeding Depression. *Evol. Lett.* **2021**, *5*, 33–47. <https://doi.org/10.1002/evl3.209>.
89. Sams, A.J.; Boyko, A.R. Fine-Scale Resolution of Runs of Homozygosity Reveal Patterns of Inbreeding and Substantial Overlap with Recessive Disease Genotypes in Domestic Dogs. *G3 Genes Genomes Genet.* **2019**, *9*, 117–123. <https://doi.org/10.1534/g3.118.200836>.
90. MacLeod, I.M.; Larkin, D.M.; Lewin, H.A.; Hayes, B.J.; Goddard, M.E. Inferring Demography from Runs of Homozygosity in Whole-Genome Sequence, with Correction for Sequence Errors. *Mol. Biol. Evol.* **2013**, *30*, 2209–2223. <https://doi.org/10.1093/molbev/mst125>.
91. Díez-del-Molino, D.; Sánchez-Barreiro, F.; Barnes, I.; Gilbert, M.T.P.; Dalén, L. Quantifying Temporal Genomic Erosion in Endangered Species. *Trends Ecol. Evol.* **2018**, *33*, 176–185.
92. Palkopoulou, E.; Mallick, S.; Skoglund, P.; Enk, J.; Rohland, N.; Li, H.; Omrak, A.; Vartanyan, S.; Poinar, H.; Götherström, A.; et al. Complete Genomes Reveal Signatures of Demographic and Genetic Declines in the Woolly Mammoth. *Curr. Biol.* **2015**, *25*, 1395–1400. <https://doi.org/10.1016/j.cub.2015.04.007>.
93. Feng, S.; Fang, Q.; Barnett, R.; Li, C.; Han, S.; Kuhlwillm, M.; Zhou, L.; Pan, H.; Deng, Y.; Chen, G.; et al. The Genomic Footprints of the Fall and Recovery of the Crested Ibis. *Curr. Biol.* **2019**, *29*, 340–349.e7. <https://doi.org/10.1016/j.cub.2018.12.008>.
94. Elmhagen, B.; Berteaux, D.; Burgess, R.M.; Ehrich, D.; Gallant, D.; Henttonen, H.; Ims, R.A.; Killengreen, S.T.; Niemimaa, J.; Norén, K.; et al. Homage to Hersteinsson and Macdonald: Climate Warming and Resource Subsidies Cause Red Fox Range Expansion and Arctic Fox Decline. *Polar Res.* **2017**, *36* (Suppl. S1). <https://doi.org/10.1080/17518369.2017.1319109>.
95. Sokolov, A.A.; Sokolova, N.A.; Ims, R.A.; Brucker, L.; Ehrich, D. Emergent Rainy Winter Warm Spells May Promote Boreal Predator Expansion into the Arctic. *ARCTIC* **2016**, *69*, 121–129. <https://doi.org/10.14430/arctic4559>.
96. Kiener, T.V.; Zaitsev, V.A. Range Structure in the Red Fox (*Vulpes vulpes* L.) in the Forest Zone of Eastern Europe. *Contemp. Probl. Ecol.* **2010**, *3*, 119–126. <https://doi.org/10.1134/S1995425510010194>.
97. Dalén, L.; Nyström, V.; Valdiosera, C.; Germonpré, M.; Sablin, M.; Turner, E.; Angerbjörn, A.; Arsuaga, J.L.; Götherström, A. Ancient DNA Reveals Lack of Postglacial Habitat Tracking in the Arctic Fox. *Proc. Natl. Acad. Sci. USA* **2007**, *104*, 6726–6729. <https://doi.org/10.1073/pnas.0701341104>.

-
98. Dalén, L.; Fuglei, E.; Hersteinsson, P.; Kapel, C.M.O.; Roth, J.D.; Samelius, G.; Tannerfeldt, M.; Angerbjörn, A. Population History and Genetic Structure of a Circumpolar Species: The Arctic Fox. *Biol. J. Linn. Soc.* **2005**, *84*, 79–89. <https://doi.org/10.1111/j.1095-8312.2005.00415.x>.
 99. Kumar, V.; Kutschera, V.E.; Nilsson, M.A.; Janke, A. Genetic Signatures of Adaptation Revealed from Transcriptome Sequencing of Arctic and Red Foxes. *BMC Genom.* **2015**, *16*, 585. <https://doi.org/10.1186/s12864-015-1724-9>.
 100. Gilg, O.; Kovacs, K.M.; Aars, J.; Fort, J.; Gauthier, G.; Grémillet, D.; Ims, R.A.; Meltofte, H.; Moreau, J.; Post, E.; et al. Climate Change and the Ecology and Evolution of Arctic Vertebrates. *Ann. N. Y. Acad. Sci.* **2012**, *1249*, 166–190. <https://doi.org/10.1111/j.1749-6632.2011.06412.x>.