

# 1 Species separation efficiency and effect of artificial lights with a horizontal grid in 2 the Basque bottom trawl fishery

3 Cuende, E. <sup>1\*</sup>, Herrmann, B. <sup>2,3,4</sup>, Sistiaga, M. <sup>5,6</sup>, Basterretxea, M. <sup>1</sup>, Edridge, A. <sup>7</sup>; Mackenzie,  
4 E.K. <sup>7</sup>, Kynoch, R. J. <sup>7</sup>, Diez, G. <sup>1</sup>

5 <sup>1</sup>AZTI, Marine Research, Basque Research and Technology Alliance (BRTA). Txatxarramendi ugarte  
6 z/g, 48395 Sukarrieta, Bizkaia.

7 <sup>2</sup>SINTEF Ocean, Fishing Gear Technology, Willemoesvej 2, 9850, Hirtshals, Denmark;

8 <sup>3</sup>The Arctic University of Norway, UiT, Breivika, N-9037 Tromsø, Norway.

9 <sup>4</sup>DTU Aqua, Denmark Technical University, Hirtshals, Denmark

10 <sup>5</sup>Institute of Marine Research, Postboks 1870 Nordnes, Bergen, 5817, Norway

11 <sup>6</sup>Norwegian University of Science and technology, Otto Nielsens veg 10, N-7491 Trondheim, Norway.

12 <sup>7</sup>Marine Scotland Science, Marine Laboratory, 375 Victoria Road, Aberdeen, AB11 9DB, UK

13 *\*Corresponding author*

14 E-mail addresses: *ecuende@azti.es* (E. Cuende); *Bent.Herrmann@sintef.no* (B. Herrmann);  
15 *mbasterretxea@azti.es* (M. Basterretxea); *Manu.Sistiaga@hi.no* (M. Sistiaga); *Alexius.Edridge@gov.scot*  
16 (A. Edridge); *Emma.Mackenzie@gov.scot* (E.K. Mackenzie), *Robert.Kynoch@gov.scot* (R.J. Kynoch)

17 **Keywords:** species separation, fish behaviour, grid, artificial light, turbidity.

## 18 ABSTRACT

19 Achieving effective size selectivity for different species within a fishing gear is a major challenge  
20 in mixed fisheries. Fish behaviour may be exploited to separate species into separate codends  
21 where different selective properties can then be applied. Within the Basque bottom trawl fishery  
22 such a set-up has never been tested despite species with different behaviours being present. In this  
23 study, we investigate if species separation can be achieved through the use of a horizontal grid,  
24 where species typically found close to the seabed are intended to pass through the horizontal grid  
25 into the lower codend, while maintaining other species in an upper codend. Furthermore, the effect  
26 of artificial light on grid passage probability was estimated. Results were obtained for five fish  
27 species of commercial interest in the Basque bottom trawl fishery. Less than 25% of the

1  
2  
3  
4  
5  
6  
7  
8  
9  
10  
11  
12  
13  
14  
15  
16  
17  
18  
19  
20  
21  
22  
23  
24  
25  
26  
27  
28  
29  
30  
31  
32  
33

individuals of all species analysed passed through the grid and were retained in the lower codend, and no significant differences were found when the grid was illuminated. The specific conditions under which the Basque bottom trawl fishery is conducted, i.e., high turbidity levels, high towing speed, may have influenced the performance of the gear in this fishery. Consequently, the design was found to have limited potential to improve species and size selection in the Basque bottom trawl fishery.

## 1. INTRODUCTION

During the last decade, many new trawl designs have been developed in an attempt to improve selectivity in commercial fisheries i.e., reduce the bycatch of unwanted species while maintaining high catch efficiency for the target species and sizes (Kennelly and Broadhurst, 2021). Selectivity in fishing gears is generally governed by a sorting process that has both a mechanical and a behavioural component (Broadhurst, 2000). The mechanical part is determined by whether or not a fish can physically pass through the selective device (e.g. netting meshes or spaces between bars in a grid), whereas the behavioural part determines how fish distribute inside the trawl gear and their reaction to specific selection devices. Research on fish behaviour relative to selectivity of fishing gears flourished in the 80s and 90s and has increased substantially in recent years (e.g. Campbell et al., 2010; Ferro et al., 2007; ICES, 2019, 2021; Krag et al., 2009a, 2014, 2017; Løkkeborg et al., 2010; Madsen et al., 2006; Melli et al., 2018, 2019). Research has shown that an understanding of fish behaviour facilitates the development of more efficient species or size selective trawl gears (Løkkeborg et al., 2010; Wardle, 1986).

The catch process by which fish enter and are retained in a trawl involves a complex sequence of events and corresponding fish behaviours (Winger et al., 2010). During the catch process, fish behaviour can differ in the pre-trawl zone, between trawl doors and trawl mouth, and inside the trawl and the codend. These differences have previously been used to select different fish species and sizes (Fryer et al., 2017; Krag et al., 2009b; Løkkeborg et al., 2010; Melli et al., 2018). In particular, species specific differences in vertical distribution inside the trawl have been used to reduce unwanted catches, i.e. by separating species that enter the gear low down from species that distribute themselves higher in the gear (Fryer et al., 2017; Karlsen et al., 2019; Krag et al., 2009a, 2009b; Larsen et al., 2021). Karlsen et al., (2015) for example, separated fish from Norway lobster (*Nephrops norvegicus*) using a horizontally divided codend and by encouraging fish to swim upwards with a frame at the entrance of the lower codend.

The Basque bottom trawl multispecies fishery includes more than 100 different species (Rochet et al., 2014). Hake (*Merluccius merluccius*), megrim (*Lepidorhombus* spp.) and anglerfish

1  
2  
3  
4  
5  
6  
7  
8  
9  
10  
11  
12  
13  
14  
15  
16  
17  
18  
19  
20  
21  
22  
23  
24  
25  
26  
27  
28  
29  
30  
31  
32  
33  
34  
35  
36  
37  
38  
39  
40  
41  
42  
43  
44  
45  
46  
47  
48  
49  
50  
51  
52  
53  
54  
55  
56  
57  
58  
59  
60  
61  
62  
63  
64  
65  
66  
67  
68  
69  
70  
71  
72  
73  
74  
75  
76  
77  
78  
79  
80  
81  
82  
83  
84  
85  
86  
87

(*Lophius* spp.) are main target species whereas horse mackerel (*Trachurus trachurus*), mackerel (*Scomber scombrus*) or blue whiting (*Micromesistius poutassou*) are important as choke species (Schrope, 2010). In between some of these fish species distinct behaviours inside trawl gear have been documented. Previous studies have revealed that hake tends to swim close to the lower netting in the trawl and is more likely to pass through devices placed in the lower panel than the top panel (Cuende et al., 2020a, 2020b). Similarly, megrim, like most flatfish, enter the trawl close to the seabed and remain there (Main and Sangster, 1982, 1981; Ryer, 2008; Thomsen, 1993). On the other hand, horse mackerel, mackerel and blue whiting, distribute more uniformly and show a more active swimming behaviour inside the trawl gear (Cuende et al., 2020a, 2020b). Thus, the range of behaviours in this fishery highlight its potential for bycatch and target species separation.

In this study we aim to separate species that typically enter the trawl gear close to the seabed (hake and megrim) from those distributed more uniformly within the trawl (horse mackerel, mackerel and blue whiting). While hake and megrim are target species throughout the whole year, horse mackerel, mackerel and blue whiting are usually considered target or bycatch species depending on their quota availability and market preferences (Rochet et al., 2014). Therefore, the effective separation of these species through a modified gear design would allow subsequent size selectivity processes to be applied to the relevant species groups and could support fishers to maintain target catch while releasing by-catch. It was proposed that a passage section inserted in the lower panel in the aft of the trawl would facilitate the access of those species swimming close to the lower panel (e.g. hake and megrim) to an additional lower codend. Contrary, those species with a more uniform distribution in the gear would continue to the upper codend. The separation of the different fish species would allow more specific size selectivity processes to be applied in the different codends.

The diversity of morphologies present in this fishery requires a passage suitable both for flat- and roundfish species. Since square meshes are more suited for the release of roundfish rather than flatfish due to fish morphology (Halliday et al., 1999; Robertson, 1989; Walsh et al., 1992), a

1  
2  
3  
4  
5  
6  
7  
8  
9  
10  
11  
12  
13  
14  
15  
16  
17  
18  
19  
20  
21  
22  
23  
24  
25  
26  
27  
28  
29  
30  
31  
32  
33  
34  
35  
36  
37  
38  
39  
40  
41  
42  
43  
44  
45  
46  
47  
48  
49  
50  
51  
52  
53  
54  
55  
56  
57  
58  
59  
60  
61  
62  
63  
64  
65

88 horizontal passage section with rectangular gaps (with a grid-like shape) was used, as it is better  
89 suited for the passage of both targeted roundfish and flatfish species. However, these gaps were  
90 oriented longitudinally to the trawl body, which may reduce flatfish escape chances since they  
91 may not allow the body shape of flatfish to pass in natural swimming orientation (Herrmann et  
92 al., 2013). Therefore, to compensate and maximize its possibilities to pass through the passage  
93 section, wide bar-spacing was provided.

94 The passage device (hereafter referred to as grid) also provides a rigid structure that facilitates the  
95 attachment of devices such as lights and maintain the shape of the escape gaps. Previous studies  
96 have shown that artificial lights can improve the selective properties of trawl gears for some  
97 species (e.g. Hannah et al., 2015; Lomeli et al., 2018; Lomeli and Wakefield, 2019; O'Neill and  
98 Summerbell, 2019). Melli et al., (2018) confirmed their potential as behavioural stimulators and  
99 their role in vertical separation efficiency. Therefore, in this study we aim to test the effect of  
100 artificial light, with a wavelength of 450nm (visible as blue) on species separation when attached  
101 on the grid.

102 The present study was designed to answer the following research questions:

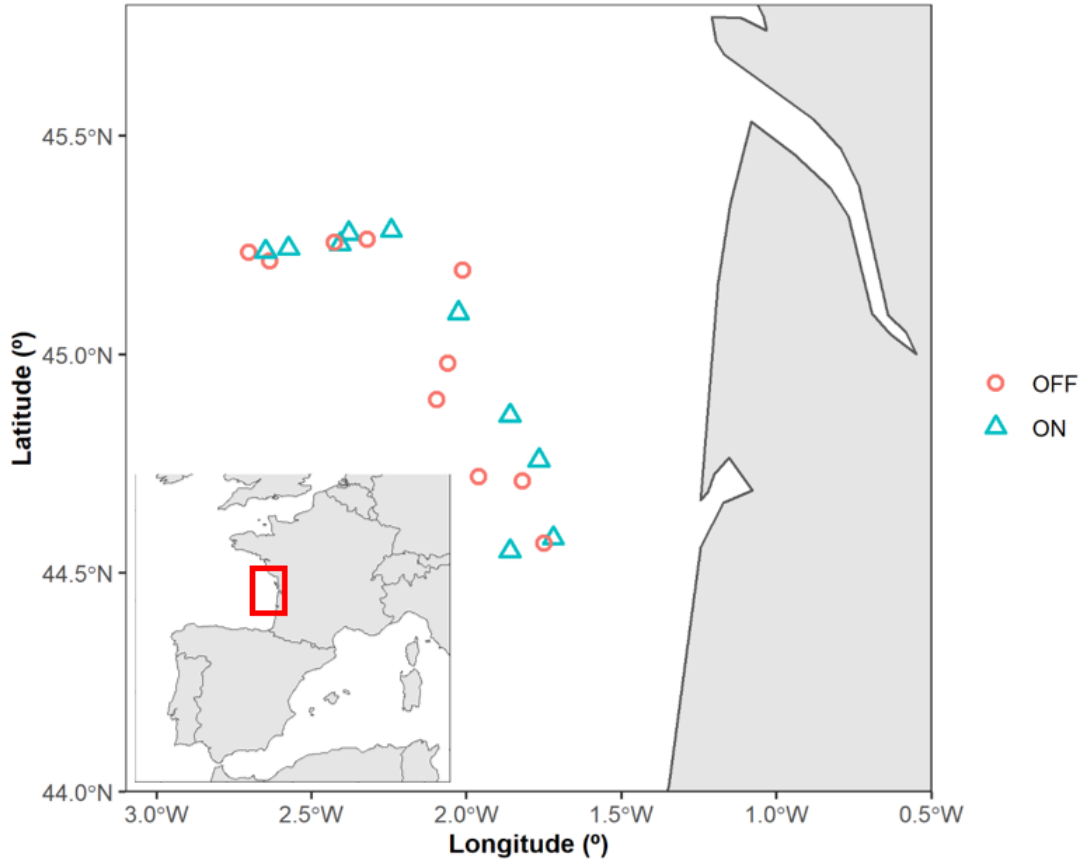
- 103 1) Can a horizontal grid be used for species separation?
- 104 2) Is fish passage probability through the grid species- and/or length-dependent?
- 105 3) Can artificial light be utilised to improve fish passage through a grid into the lower  
106 codend?

## 107 **2. MATERIAL AND METHODS**

### 108 **2.1. Gear design**

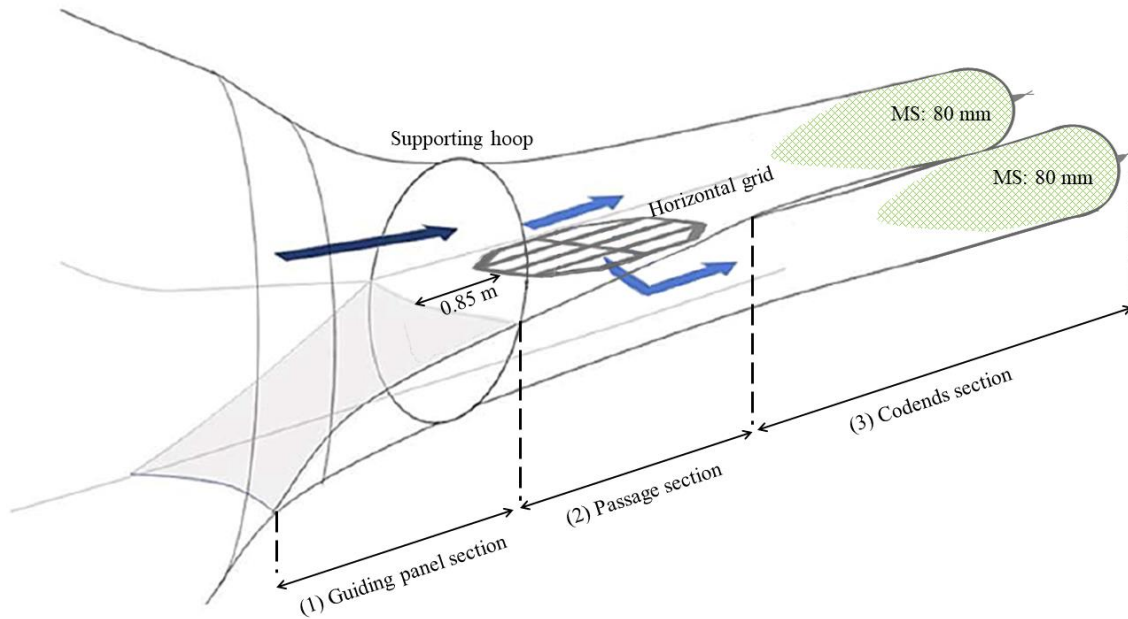
109 Sea trials were carried out on board the commercial fishing vessel Kalamendi (43m length overall;  
110 900 Kw) from 28 June to 4 July 2021. The fishing was carried out in ICES division 8a (Fig. 1).  
111 Towing occurred during day and night, at depths that varied between 89 and 124 m and towing  
112 speed over ground ranged from 3.9 to 4.2 knots. Each tow lasted 2.5 hours approximately,

113 counting from when the vessel reached a constant towing speed to the beginning of gear hauling-  
114 back.



115  
116 **Figure 1.-** Sampling area and fishing position for all hauls conducted during the cruise. Red  
117 circles represent hauls with lights switched off and blue triangles with lights switched on.  
118 The gear used in the experiments was a two-panel bottom trawl with a 120 m long fishing line.  
119 The trawl was rigged with a set of Morgère doors (Morgère EXOCET EX07 type, 3.84 m<sup>2</sup>; 988  
120 Kg each), 385 m sweeps, and a light rockhopper ground gear (with 400 Kg chain).  
121 The trawl configuration tested was attached to the aft part, just behind the body of the trawl net  
122 and was composed by three sections (Fig. 2). The trawl configuration tested an 80 mm two-panel  
123 netting section split into two compartments (i.e. upper and lower extension and codend) with an  
124 80 mm horizontal separator panel that kept both extensions separated (Fig. 2). This section was  
125 made of 76.5 meshes long x 120 meshes round and constructed of 4 mm single PE twine (Fig. 2).

126 Ahead of this section, a guiding panel was installed forcing fish to swim into the upper extension  
 127 and over the horizontal separator panel where a grid (described below) was installed, just below  
 128 the main flow of fish. For fish to end up in the lower compartment they need to pass through the  
 129 grid (Fig. 2). The horizontal separation contained an internal supporting hoop (internal radius 78  
 130 cm) to keep the netting spread (Fig. 2 and 3c).



131

132 **Figure 2.-** Gear diagram and specification of different sections. MS: mesh size.

133 The grid in the passage section was designed as an octagon with rectangular gaps (Fig. 3a). The  
 134 grid was 25 mm thick high-density polyurethane with dimensions 1.20 m x 0.75 m. It had a  
 135 horizontal bar dividing the grid in half and vertical bars on both halves at 0.145 m apart (to permit  
 136 passage of legal sizes of all species under study). The grid was placed 0.85 m after the end of the  
 137 guiding panel (Fig. 2).

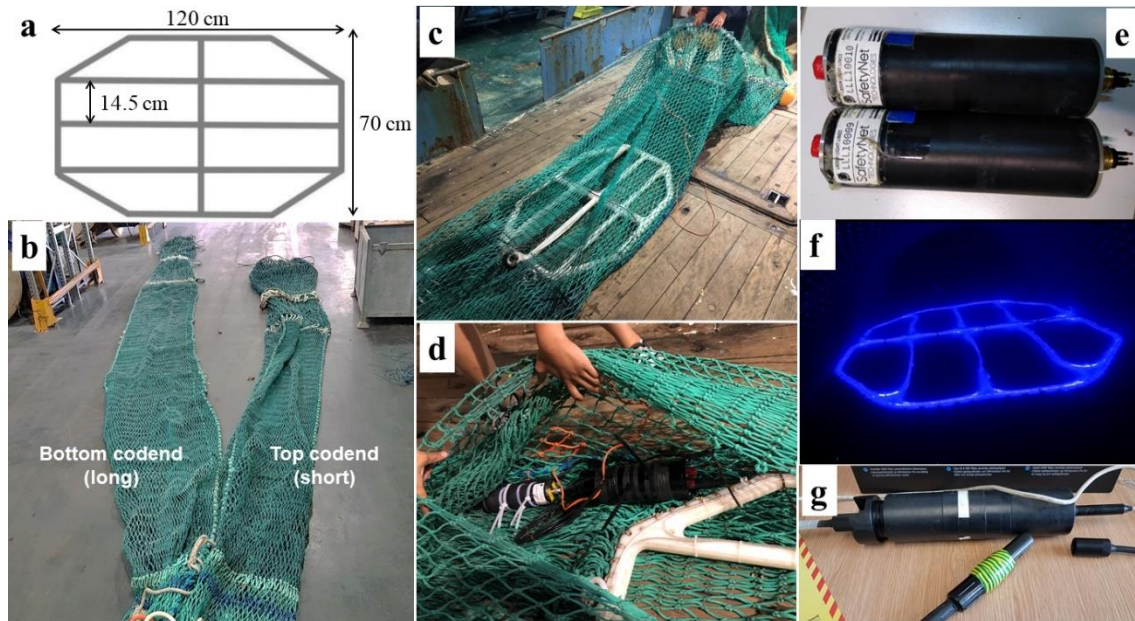
138 The fishery studied here allows the use of a 100 mm codend mesh size or a 70 mm codend mesh  
 139 size together with a 100 mm square mesh panel (SMP). The sea trials were carried out on  
 140 commercial fishing grounds where catch of large-sized target individuals was expected.  
 141 Therefore, as compromise between the mandatory codend mesh sizes and to ease the fishing  
 142 operation onboard (by fishing smaller bulks), the upper and lower codends were made of 80 mm

143 nominal mesh size. The upper codend was made of 4 mm single twine, 120 meshes round, 73  
144 meshes long, and had an average mesh size of 81.75 ( $\pm$  2.57 SD) mm. The lower codend was  
145 made of 4 mm single twine, 120 meshes round, 102 meshes long (longer than upper codend to  
146 facilitate the fishing operation) and had a mesh size of 81.25 ( $\pm$  1.97 SD) mm (Fig. 3b). Both  
147 codends were rigged with 160 mm mesh size lifting/strengthening bags 17 meshes long x 30  
148 meshes width constructed from 5 mm double PE twine.

149 The light source used to illuminate the grid was a 20 m long multi-strand side-emitting fibre optic  
150 cable, connected to a laser diode pod (LDP) at each end (SafetyNet Technologies Ltd) (Fig. 3de).  
151 Each of the two LDP emit coherent light from a laser diode at a wavelength of 450 nm, at 340  
152 mW of optical power and were powered by an external 12V Li-Ion battery pack (Fig. 3d). Since  
153 lower wavelengths of the visible spectrum are faster absorbed than higher wavelengths, a 450 nm  
154 wavelength (visible as blue light) was selected for the experiments in this study (Carleton et al.,  
155 2020). Additionally, this may allow comparison of results with Cuende et al., (2020a) (Fig. 3f).  
156 We used a single trawl with the grid illuminated (hereafter treatment design) and without  
157 illumination (hereafter baseline design) in an alternating order.

158 Turbidity levels inside the gear were measured during trawling in every haul, as recommended  
159 by the International Council for the Exploration of the Sea (ICES) to improve comparability of  
160 results between light studies (ICES, 2018). Turbidity was measured with a Seapoint turbidity  
161 meter and recorded by an Aquatec AQUAlogger 210 series Data Logger (Fig. 3g). Underwater  
162 recordings were conducted when the artificial lights attached on the grid were switched on. By  
163 synchronising video camera and turbidity logger recording timers, we aimed to associate turbidity  
164 measures to specific video frames. Since the turbidity meter was positioned ~ 1.5 meter from the  
165 video camera, we calculated the mean turbidity ( $\pm$ SD) of each video frame by accounting on the  
166 5 seconds before and after the targeted video frame. Besides, quantiles Q10, Q25, Q50, Q75 and  
167 Q90 were calculated to estimate the towing time percentage (10%, 25%, 50%, 75% and 90%)  
168 during which the turbidity did not exceed a certain level.





169

170 **Figure 3.-** (a) Technical characteristics of the grid used; (b) Gear picture, the grid and upper  
 171 (short) and lower (long) codends are shown; (c) passage section and the internal supporting hoop;  
 172 (d) battery housing and LDP attached to the gear; (e) LDPs; (f) underwater picture of the  
 173 illuminated grid and (g) turbidity sensor.

174 The species included in the data analysis were hake, megrim, anglerfish, horse mackerel and  
 175 mackerel due to their importance as target and bycatch species. Despite being an important species  
 176 for the fishery, blue whiting was not included in the study because there were not enough catches.  
 177 After each haul, all the catch in upper and lower codends was sorted by species and all individuals  
 178 were measured to the nearest centimetre using a measuring board.

179 **2.2. Modelling the length-dependent probability for capture in the lower codend**

180 Previous studies working with behaviour-based selectivity have shown a size-dependent entry  
 181 pattern of fish in trawls (Karlsen et al., 2019; Melli et al., 2018). Therefore, we conducted an  
 182 analysis to determine for each species the length-dependent probability for being captured in the  
 183 lower codend conditioned capture  $PL(l)$ , i.e., the probability for passage through the grid. We  
 184 used the numbers and length measurements of the fish caught in upper and lower codend,  
 185 respectively. The analysis was carried out independently for each species and gear configurations  
 186 (with and without the LDP turned on) following the description below.

187 The expected probability for a fish of length  $l$  to be captured in the lower codend will be:

188 
$$PL_l = \frac{\sum_{j=1}^h nL_{lj}}{\sum_{j=1}^h \{nL_{lj} + nU_{lj}\}} \quad (1)$$

189 where  $nL_{lj}$  and  $nU_{lj}$  are the number  $n$  of fish of the species investigated caught per length class  $l$   
190 in respectively, lower ( $L$ ) and upper ( $U$ ) codend in haul  $j$  and  $h$  is the total number of hauls with  
191 the specific gear configuration. The functional description of the capture probability in the lower  
192 codend was obtained using maximum likelihood estimation by minimising Equation (2):

193 
$$-\sum_{j=1}^h \sum_l \{nL_{lj} \times \ln[PL(l, \mathbf{v})] + nU_{lj} \times \ln[1.0 - PL(l, \mathbf{v})]\} \quad (2)$$

194 In Equation (2),  $\mathbf{v}$  represents the parameters describing the capture probability curve defined by  
195  $PL(l, \mathbf{v})$ , that spans the value range [0.0;1.0]. Equation (1) and (2) together is similar in form to  
196 what is often used for modelling and estimating the length-dependent catch comparison rate  
197 between two fishing gears (Krag et al., 2014). Therefore, we adapted the same approach for  
198 modelling  $PL(l, \mathbf{v})$  as is often applied for catch comparison studies based on binominal count data  
199 (Herrmann et al., 2017):

200 
$$PL(l, \mathbf{v}) = \frac{\exp[f(l, v_0, \dots, v_k)]}{1 + \exp[f(l, v_0, \dots, v_k)]} \quad (3)$$

201 In Equation (3),  $f$  is a polynomial of order  $k$  with coefficients  $v_0 - v_k$ , so that  $\mathbf{v} = (v_0, \dots, v_k)$ .  
202 The values of the parameters  $\mathbf{v}$  describing  $PL(l, \mathbf{v})$  are estimated by minimising Equation (2). We  
203 considered  $f$  of up to an order of 4. Leaving out one or more of the parameters  $v_0 \dots v_4$ , at a time  
204 resulted in 31 additional candidate models for the capture probability function  $PL(l, \mathbf{v})$ . Among  
205 these models, the capture probability was estimated using multi-model inference to obtain a  
206 combined model (Burnham and Anderson, 2002; Herrmann et al., 2017). The ability of the  
207 combined model to describe the experimental data was based on the  $p$ -value, which is calculated  
208 based on the model deviance and degrees of freedom (Herrmann et al., 2017; Wileman et al.,  
209 1996). This  $p$ -value quantifies the probability to obtain at least as big a discrepancy between the  
210 fitted model and experimental data as observed by coincidence. For the applied model to describe  
211 the experimental data at an acceptable level, this  $p$ -value should be  $> 0.05$  (see Wileman et al.,

1996). We used a double bootstrapping method (1000 bootstrap repetitions) to estimate the 95% confident intervals (CIs) for the capture probability curve following the description in (Lomeli et al., 2019).

The average probability of being retained in the lower codend integrating the Minimum Conservation Reference Size (MCRS),  $PL_{average}$ , was quantified by calculating the values for a number of indicators. Specifically, based on the population size structure caught during the trials, the average value for the capture probability in the lower codend of individuals below MCRS ( $PL_-$ ), above MCRS ( $PL_+$ ) and of the total catch ( $PL_{total}$ ) were estimated:

$$PL_{average} = \frac{\sum_l \sum_{j=1}^h nL_{lj}}{\sum_l \sum_{j=1}^h \{nL_{lj} + nU_{lj}\}} \quad (4)$$

where the outer summations include the size classes in the catch during the experimental fishing period. The equation (4) used, both summed-over undersized fish ( $PL_-$ ), target sized fish ( $PL_+$ ) and all fish ( $PL_{total}$ ), respectively. In contrast to the length-dependent evaluation of the capture probability curve for the lower codend  $PL(l, \mathbf{v})$ ,  $PL_{average}$  is specific for the population structure encountered during the experimental trials and cannot be extrapolated to other scenarios in which the size structure of the specific fish species may be different. The MCRS values for each species were: hake: 27 cm; megrim: 20 cm; horse mackerel: 15 cm; and mackerel 20 cm. Anglerfish has a minimum marketable weight of 500 gr (without guts) per individual (EC, 1996), which is equivalent to 32 cm length according to Dorel (1986). We used the statistical software SELNET (Herrmann et al., 2012) to analyse the catch data and ggplot2 (Wickham, 2016) for graphical output in R statistical software (R, 2021).

### 2.3. Inferring the effect of artificial light on probability for capture in the lower codend

The difference in  $PL(l, \mathbf{v})$  between using treatment and baseline designs was obtained species-wise by estimating the difference in the probability of ending up in the lower codend between treatment and baseline designs ( $\Delta PL(l) = PL_{light}(l) - PL_{base}(l)$ ). Where  $PL_{base}(l)$  and  $PL_{light}(l)$  represent  $PL(l, \mathbf{v})$  obtained by using (3) in (2) for two different gear configurations

237 compared. 95% CIs for  $\Delta PL(l)$  was obtained based on the two bootstrap populations for both  
238  $PL_{light}(l)$  and  $PL_{base}(l)$  by the method described in Larsen et al., (2018).

### 239 3. RESULTS

#### 240 3.1. Overview of sea trials

241 A total of 20 valid hauls were conducted, 10 hauls with the baseline design and 10 hauls with the  
242 treatment design. Sufficient data for analysis were collected for hake, megrim, anglerfish, horse  
243 mackerel and mackerel, although some species were not present in all hauls (Table 1). In total,  
244 24,008 individuals comprising all species were included in the analysis, from which 20,343  
245 entered the upper codend while 3,665 individuals went through the grid and ended up in the lower  
246 codend. Although most individuals entered the upper compartment, the level of separation  
247 differed among the species (Table 1).

248

16  
17  
18  
19  
20  
21  
22  
23  
24  
25  
26  
27  
28  
29  
30  
31  
32  
33  
34  
35  
36  
37  
38  
39  
40  
41  
42  
43  
44  
45  
46  
47  
48  
49  
50  
51  
52  
53  
54  
55  
56  
57  
58  
59  
60  
61  
62  
63  
64  
65

249 Table 1.- Overview of the hauls conducted during the experimental sea trials and the numbers of hake, anglerfish, megrim, horse mackerel and mackerel in the  
250 upper (*nU*) and lower (*nL*) codends.

Haul no.	Light	Depth (m)	Tow starting time	Tow ending time	Hake		Anglerfish		Megrim		Horse mackerel		Mackerel	
					<i>nU</i>	<i>nL</i>	<i>nU</i>	<i>nL</i>	<i>nU</i>	<i>nL</i>	<i>nU</i>	<i>nL</i>	<i>nU</i>	<i>nL</i>
1	ON	102.8	8:20	10:20	171	88	118	4	95	7	837	78	81	0
2	OFF	102.8	11:00	13:30	234	48	-	-	115	10	750	98	84	13
3	ON	102.0	14:10	16:40	292	67	74	4	103	12	1603	163	23	0
4	OFF	112.8	17:20	19:50	241	35	90	10	221	28	824	137	244	4
5	OFF	115.4	0:25	2:55	255	58	102	17	76	16	25	8	-	-
6	ON	116.2	3:50	6:20	155	31	116	29	84	16	75	6	6	1
7	OFF	109.5	10:45	13:30	559	100	53	8	200	43	2126	326	73	3
8	ON	90.3	14:10	16:30	310	113	54	13	134	64	475	181	15	1
9	ON	114.5	21:15	23:45	147	30	135	56	186	46	387	67	27	1
10	OFF	111.2	0:35	3:05	82	29	160	80	131	65	-	-	-	-
11	OFF	117.0	7:45	10:15	350	60	124	19	396	138	440	48	111	1
12	ON	106.2	11:05	13:35	-	-	96	32	-	-	598	63	94	0
13	ON	112.8	22:15	0:45	63	11	180	44	190	48	12	7	-	-
14	OFF	112.0	1:35	4:05	114	12	190	27	213	19	-	-	-	-
15	OFF	109.5	8:55	11:25	370	111	93	20	270	82	398	78	16	0
16	ON	109.5	12:10	14:40	339	90	117	29	272	101	346	61	25	1
17	ON	92.8	20:05	22:35	246	59	69	12	156	51	150	16	9	0
18	OFF	92.8	23:25	1:55	179	26	82	11	53	21	30	11	-	-
19	ON	98.6	20:15	22:45	218	47	110	17	85	13	577	38	194	2
20	OFF	99.5	23:35	2:05	209	11	103	9	108	5	-	-	-	-

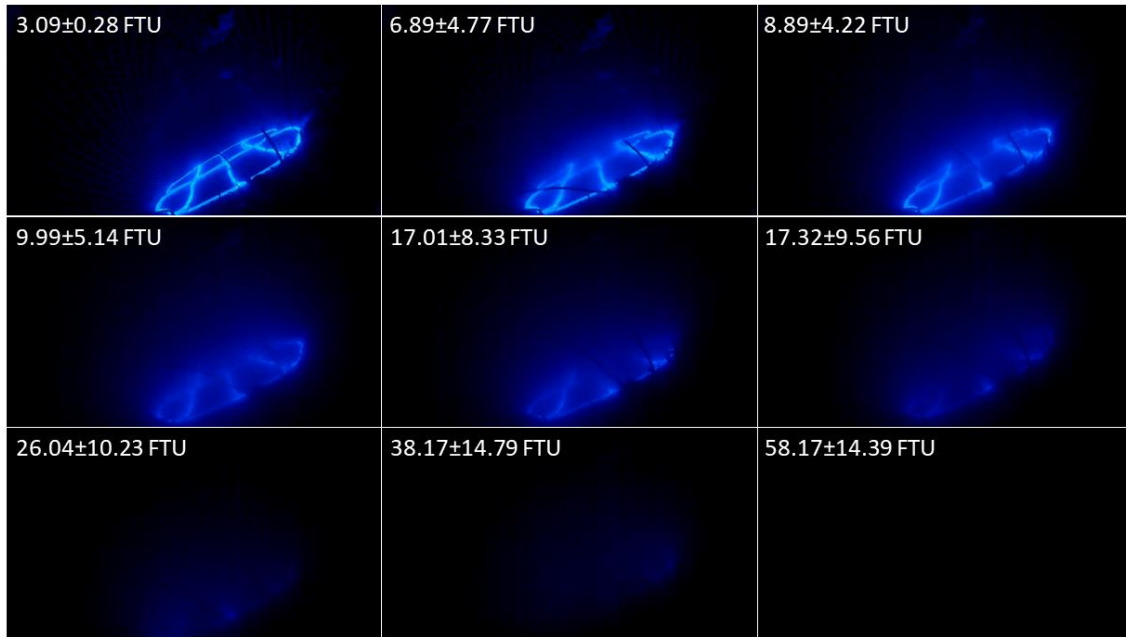
251

252 Underwater recordings of the light on the grid were not visible from the video camera for long  
 253 periods while towing, this was due to the sediment resuspension and high presence of  
 254 invertebrates in the area. Figure 4 shows low turbidity levels in video frames with a clear view of  
 255 the illuminated grid (e.g.,  $3.09 \pm 0.28$  FTU) whereas a high turbidity level occurred in video frames  
 256 where the illuminated grid is not visible (e.g.,  $58.17 \pm 14.39$  FTU). Considering turbidity values  
 257 in every haul, Table 2 shows that, for most hauls, 90% of the towing time the values were above  
 258 100 FTU, significantly higher than the value in the dark frame in Figure 4.

259 **Table 2.-** Quantiles (10, 25, 50, 75 and 90) of the turbidity data (FTU) registered during each  
 260 haul. Shadowed rows correspond to hauls with baseline design.

Haul n°	Q10	Q25	Q50	Q75	Q90
1	39.77	85.01	133.31	185.15	236.50
2	105.69	131.28	147.42	170.92	196.10
3	66.63	92.42	119.19	143.84	175.08
4	66.36	92.38	170.86	416.86	527.87
5	312.40	369.40	426.28	482.59	528.60
6	318.89	370.13	441.92	499.86	558.84
7	113.11	141.78	177.43	221.47	276.21
8	94.55	131.21	171.78	213.38	254.09
9	114.27	144.13	187.71	247.06	294.37
10	167.41	194.08	226.92	268.78	326.61
11	169.42	216.24	271.31	341.10	406.17
12	101.79	130.32	157.40	186.68	218.91
13	151.85	242.36	379.68	486.25	547.63
14	193.13	275.15	350.17	495.06	630.67
15	172.67	201.52	248.15	310.54	364.53
16	193.50	241.52	315.02	446.46	528.32
17	120.45	153.53	187.61	231.16	305.21
18	170.31	207.95	254.69	349.53	432.96
19	99.05	137.15	276.49	405.16	470.23
20	158.10	188.74	233.06	284.75	330.87

261



262

263 **Figure 4.-** Underwater video captures during an illuminated haul. Each video frame shows the  
 264 associated turbidity mean value ( $\pm$ SD) given by the turbidity meter.

### 265 3.2. Passage probability into lower codend

266 Estimation of the passage probability into the lower codend was conducted fitting the combined  
 267 model to the experimental data. The fit statistics for the model show that, in most cases,  $p$ -values  
 268 were  $> 0.05$ , meaning that the applied model describes the experimental data at an acceptable  
 269 level (Table 3). Only the model for megrim on the treatment design had poor fit statistics ( $p$ -value  
 270  $< 0.05$ , deviance  $\gg$  DOF), for which the residual deviations between the data and the modelled  
 271 curves were investigated. No systematic structure was detected, and the low  $p$ -value was  
 272 considered a consequence of overdispersion in the data. Therefore, we were confident that the  
 273 model could also be used for megrim to describe the length-dependent probability to be captured  
 274 in the lower codend.

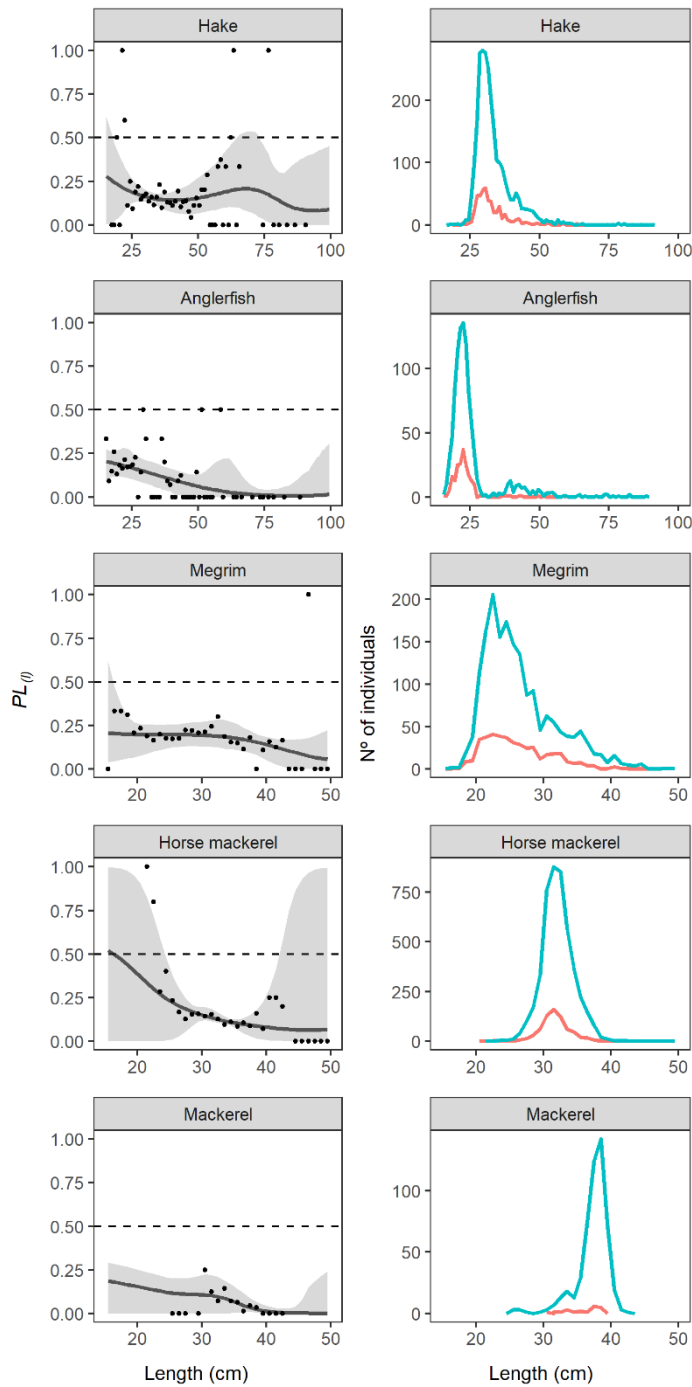
275 **Table 3.-** Fit statistics for the modelled grid passage probabilities of the experiments with the  
 276 light switched on or off. DOF denotes the degrees of freedom and was calculated by subtracting  
 277 the number of model parameters from the number of length classes in the dataset.  $p$ -values marked

278 with \* show the cases where the residual variation between the models fit and the experimental  
 279 data required further investigation.

Species	Light	p-Value	Deviance	DOF
Hake	OFF	0.1270	62.65	51
	ON	0.7583	39.92	47
Anglerfish	OFF	0.8995	35.97	48
	ON	0.6814	43.85	49
Megrin	OFF	0.5751	30.84	33
	ON	0.0179*	43.31	26
Horse mackerel	OFF	0.3326	25.35	23
	ON	0.3605	17.40	16
Mackerel	OFF	0.6078	10.09	12
	ON	0.7866	8.82	13

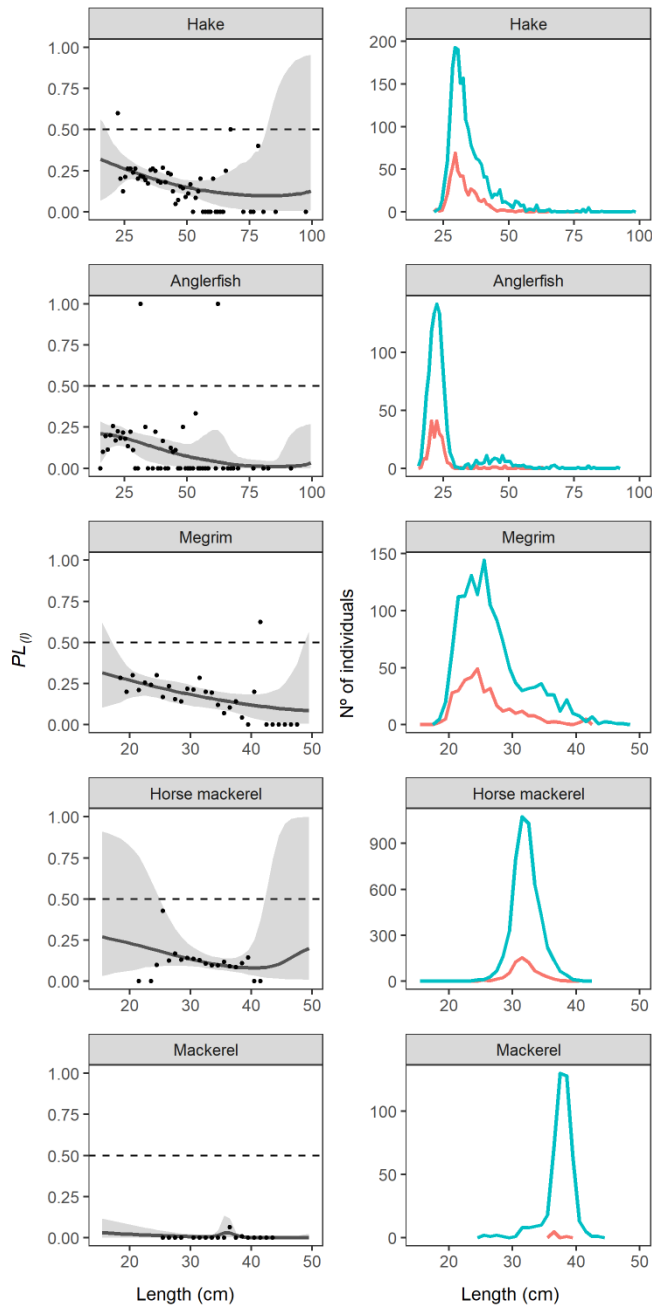
280  
 281 The catch comparison curves described well the experimental data, especially for some length  
 282 classes (Fig. 5 and 6). For the lengths where fewer individuals were caught, the certainty to  
 283 explain the experimental data decreased, as shown by the increasing size of the confidence  
 284 intervals. The catch comparison analysis show that the probability for being retained in the lower  
 285 codend is significantly lower than in the upper codend for all species using both the baseline (Fig.  
 286 5) and treatment design (Fig. 6). In general, the probability of passing through the grid tends to  
 287 decrease for larger individuals of all species.





288

289 **Figure 5.-** (Left) Length dependent probability for individuals to be caught in the lower codend  
 290 conditioned that they are retained when baseline design was used. (Right) Number of individuals  
 291 retained in upper (blue) and lower (red) codend. Horizontal line represents equal probability to be  
 292 captured in both codends.



293

294 **Figure 6.-** (Left) Length dependent probability for individuals to be caught in the lower codend  
 295 conditioned that they are retained when the treatment design was used. (Right) Number of  
 296 individuals retained in upper (blue) and lower (red) codend. Horizontal line represents equal  
 297 probability to be captured in both codends.

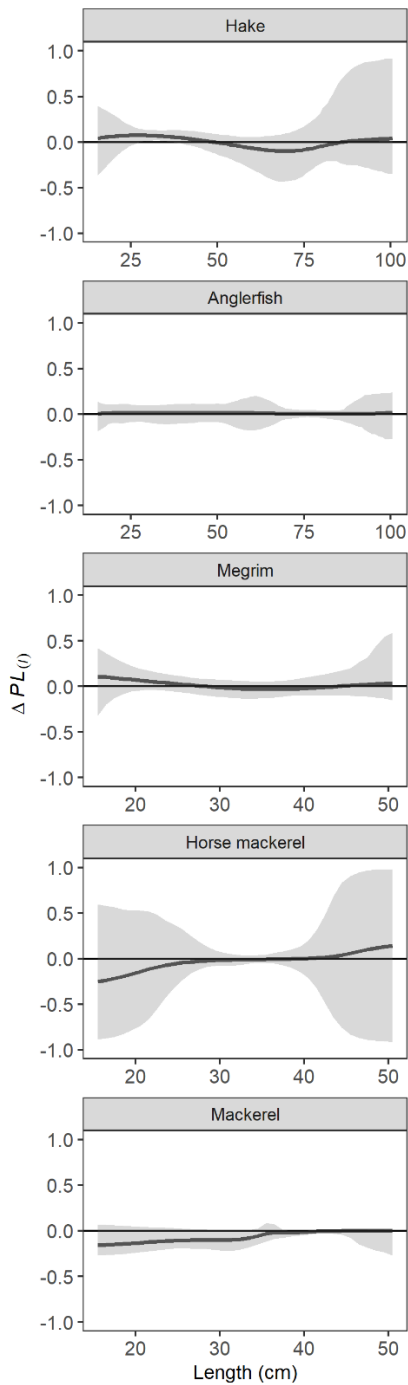
### 298 3.3. Effect of artificial light

299 The difference in retention probability in the lower codend when the lights were on compared to  
 300 when lights were off for the different species was plotted to show the effect of artificial lights

301 (Fig. 7). Figure 7 shows that there are not significant differences on grid passage probability  
302 between treatment and baseline design except for hake. Hake shows significantly higher retention  
303 in the lower codend when the grid is illuminated for individuals between 28 and 36 cm length.

304

1  
2  
3  
4  
5  
6  
7  
8  
9  
10  
11  
12  
13  
14  
15  
16  
17  
18  
19  
20  
21  
22  
23  
24  
25  
26  
27  
28  
29  
30  
31  
32  
33  
34  
35  
36  
37  
38  
39  
40  
41  
42  
43  
44  
45  
46  
47  
48  
49  
50  
51  
52  
53  
54  
55  
56  
57  
58  
59  
60  
61  
62  
63  
64  
65

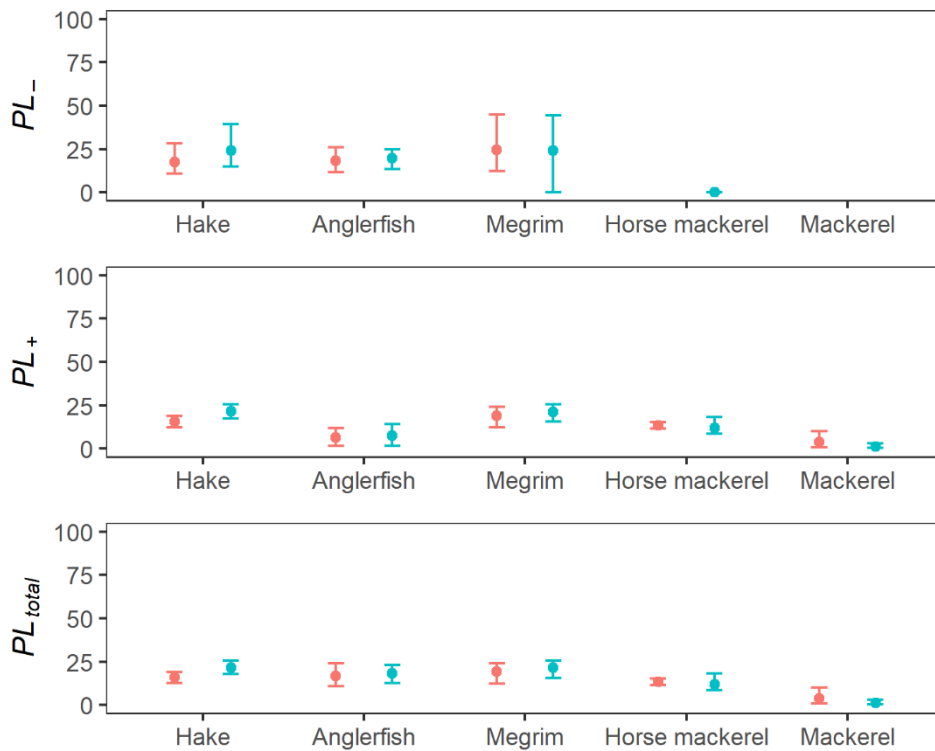


305

306 **Figure 7.-** Probability of fish ending up at the lower codend when treatment design was used with  
 307 respect to baseline design. Horizontal line represents equal probability for both designs. Mean  
 308 curve and CIs above or below horizontal line means significantly higher or lower probability to  
 309 being retained in the lower codend when treatment design is used.

310 When the average capture probability in the lower codend for each species is analysed, which  
 311 depend directly on the size structure of the population caught, it is observed that light does

312 not significantly affect fish probability for passing through the grid since any of the indicators  
 313 calculated were significantly different in between designs (Fig. 8).



314  
 315 **Figure 8.-** The average probability (%) for individuals below MCRS ( $PL_-$ ), above MCRS ( $PL_+$ )  
 316 and of the total catch ( $PL_{total}$ ) to be retained in the lower codend when light is on (blue) and off  
 317 (red), conditioned capture.

318

319 **4. DISCUSSION**

1  
2 320 The results obtained in this study show that the catch rate of all species in the lower codend  
3  
4 321 compared to the total catch was low, showing fish were unlikely to pass through the grid. The  
5  
6 322 results suggest that the swimming preferences of the species tested were not strong enough driver  
7  
8 323 to trigger a downwards escape reaction and separate them into upper and lower codend in the  
9  
10 324 fishery under study. The low probability values observed could be a consequence of factors such  
11  
12 325 as low contact ratio between the fish and the grid. Cuende et al., (2022) showed that a square  
13  
14 326 mesh panel located on the bottom panel of the extension piece of the trawl significantly increased  
15  
16 327 the escape of undersized hake, probably due to its tendency to swim towards the bottom.  
17  
18 328 However, Grimaldo et al., (2015) showed that for achieving satisfactory selectivity results for  
19  
20 329 some species, guiding fish to a size selective sorting grid by means of a guiding panel is essential.  
21  
22 330 Therefore, a guiding panel that directs the fish towards the grid, opposite to the current set-up,  
23  
24 331 could increase encounter rates and the likelihood the fish contact the grid and escape through it.  
25  
26  
27  
28  
29 332 A potential alternative driving out the need for increasing contact probability of target species  
30  
31 333 with the grid can be the use of a horizontally divided codend. This gear design has been often  
32  
33 334 tested in crustaceans and finfish fisheries with different degrees of success (e.g., Karlsen et al.,  
34  
35 335 2019; Krag et al., 2009b), and its optimization is based on additional devices or simple gear  
36  
37 336 modifications. Karlsen et al., (2015) for example, improved fish and Norway lobster (*Nephrops*  
38  
39 337 *norvegicus*) separation in a horizontally divided codend by encouraging fish to swim upwards  
40  
41 338 with a frame at the entrance of the lower codend. Dividing the codend would eliminate the  
42  
43 339 potential visual effect of the grid, which could make fish more reluctant to pass through than if  
44  
45 340 clearer passage is available (Glass et al., 1995). Additionally, it would provide longer time to fish  
46  
47 341 to swim upwards or downwards and also may constitute a simpler gear design to construct and  
48  
49 342 deploy.  
50  
51  
52  
53  
54 343 In general, the results suggest a length-dependent capture pattern in the lower codend, since a  
55  
56 344 higher proportion of small individuals pass through the grid regarding the total catch. Previous  
57  
58 345 studies have reported a length-dependent behaviour related to the swimming capacity; with  
59  
60  
61  
62  
63  
64  
65

1  
2  
3  
4  
5  
6  
7  
8  
9  
10  
11  
12  
13  
14  
15  
16  
17  
18  
19  
20  
21  
22  
23  
24  
25  
26  
27  
28  
29  
30  
31  
32  
33  
34  
35  
36  
37  
38  
39  
40  
41  
42  
43  
44  
45  
46  
47  
48  
49  
50  
51  
52  
53  
54  
55  
56  
57  
58  
59  
60  
61  
62  
63  
64  
65

346 smaller individuals entering the lower compartment more frequently (Melli et al., 2018). In this  
347 study, length-dependent effect was identified for all species however, it is believed that the grid  
348 bar-spacing may be affecting the passage probability of larger fish. This may be especially  
349 relevant for large megrim individuals since longitudinally oriented bars together with narrow bar-  
350 spacing may not allow the body shape of flatfish to pass in natural swimming orientation. Santos  
351 et al., (2016) were able to reduce up to ~68% of flatfish bycatch by implementing escape grid  
352 with horizontal gaps in front of the codend. Therefore, further research on a passage section that  
353 minimises physical constrains would be worth to test.

354 Our results show that the passage probability through the illuminated grid is not significantly  
355 different when compared to baseline grid (except for hake, which was only slightly affected by  
356 the lights). The estimations showed significantly higher passage probability for hake between 28  
357 and 36 cm length during the illuminated trials. However, these values are far too low to be useful  
358 in a commercial fishery. Despite that, the average probability estimations, which are specific for  
359 the population structure encountered during the experimental trials, did not show any significant  
360 differences between designs for any species.

361 According to the study carried out by Melli et al., (2018), green LED lights were found to have a  
362 significant effect on the vertical separation of some species. Specifically, fish showed a preference  
363 for the bottom panel in a horizontally divided codend in the presence of green LED lights.  
364 Although they were not able to specify how this effect was given because fish responded  
365 differently when the artificial lights were placed in different positions, they suggested that lights  
366 could be triggering other behavioural responses such as increased awareness of the surroundings,  
367 panic, or species-specific escape behaviours. In our case, considering the poor effect of lights on  
368 the passage probability of the species tested, we cannot discard that other factors may be affecting  
369 the properties of the artificial light or how the fish perceive the light. According to the turbidity  
370 data in our study and the underwater recordings, it is observed that high turbidity levels occurred  
371 for extensive periods in different hauls. More specifically, turbidity levels were severe enough to  
372 affect viewing capabilities for 75% of the video recordings made. Since our interpretation of the

1  
2  
3  
4  
5  
6  
7  
8  
9  
10  
11  
12  
13  
14  
15  
16  
17  
18  
19  
20  
21  
22  
23  
24  
25  
26  
27  
28  
29  
30  
31  
32  
33  
34  
35  
36  
37  
38  
39  
40  
41  
42  
43  
44  
45  
46  
47  
48  
49  
50  
51  
52  
53  
54  
55  
56  
57  
58  
59  
60  
61  
62  
63  
64  
65

373 turbidity data is based on our capacity for seeing any light trace from video recordings, we cannot  
374 conclude whether the lights used were not visible to fish. Other factors such as the ability of fish  
375 to perceive light and physical properties of the light need to be investigated to draw strong  
376 conclusions (Nguyen and Winger, 2019). Our turbidity readings show high sediment  
377 resuspension, which may compromise fish vision and consequently, affect their reaction towards  
378 the grid.

379 Fishing gears need to be developed so they can perform in the environmental conditions they are  
380 intended to be used. The towing speed in the fishery presented here is between 3.9 and 4.2 knots,  
381 which can imply that the fish entering the aft of the gear passes by the grid area at ca. 2 metres  
382 per second. Thus, fish have limited time to react to towards the grid before being drifted back to  
383 the codend. In addition to the limited visibility due to the high turbidity values, the drifting speed  
384 may limit the ability of the fish to perceive and interact with the grid therefore, potentially  
385 impacting the likelihood for fish to enter the lower codend.

386 The high towing speed and high turbidity values, typical for the fishery under study, may impede  
387 the ability of fish to respond to the visual stimulus used. Two conditions need to be fulfilled to  
388 ensure fish make contact with the grid based on visual stimulation. First, the fish need to respond  
389 to the light stimulus in some way and second, the fish need to have the physical swimming  
390 capability to interact with the grid. In this specific fishery, the extreme conditions experienced  
391 from the high towing speed and turbidity could significantly affect the ability of the fish to reach  
392 the grid or even perceive the artificial light. Therefore, it is not possible to conclude whether the  
393 species examined in this study have a positive, negative or no reaction to artificial light based on  
394 the grid passage probability obtained.

395 During the cruise, large quantities of invertebrates (mainly echinoderms and cephalopods) and  
396 fish individuals got meshed in the netting section preceding the grid, specifically around the lifting  
397 panel. We believe that this meshing was a consequence of halving the transversal area in the  
398 section with the lifting panel, and that as it took place in the section prior to the grid we assume  
399 it did not affect the results presented in this study.



1  
2  
3  
4  
5  
6  
7  
8  
9  
10  
11  
12  
13  
14  
15  
16  
17  
18  
19  
20  
21  
22  
23  
24  
25  
26  
27  
28  
29  
30  
31  
32  
33  
34  
35  
36  
37  
38  
39  
40  
41  
42  
43  
44  
45  
46  
47  
48  
49  
50  
51  
52  
53  
54  
55  
56  
57  
58  
59  
60  
61  
62  
63  
64  
65

400 Finally, the results demonstrated that we were not able to efficiently separate species by means  
401 of hake and megrim passage through the grid. However, we cannot rule out a more efficient  
402 species separation by using the opposite approach, i.e., guiding the main flow of fish through the  
403 lower panel and driving the species separation by means of passage of horse mackerel and  
404 mackerel through the grid to the upper codend. Even though a simpler approach could probably  
405 be used to take advantage of the behavioural differences between species in this fishery (in the  
406 line of those proposed by Karlsen et al., (2019) or Melli et al., (2018)), in more favourable  
407 environmental conditions a further developed configuration of the device tested in this study may  
408 provide better results. For example, a longer grid or a guiding panel that directs the fish towards  
409 the grid, could improve contact probability with the grid and subsequently increase the likelihood  
410 for that fish can perceive the artificial light.

411 The experiments carried out here showed that the probability of fish passing through the grid,  
412 under the conditions described, was very low and the additional use of lights did not significantly  
413 affect the results. However, it is important to emphasize the relevance of reporting any result, as  
414 an experimental outcome, so that future experiments can build upon (Weintraub, 2016).  
415 Publishing only selective information, provides a biased view and understanding of the processes,  
416 while reporting on all results may help to interpret results obtained in related studies. In addition,  
417 reporting all results can help other scientists to adjust their experimental designs and increase  
418 chances of success, saving time and resources.

## 419 **5. ACKNOWLEDGMENTS**

420 We thank to the crew of *FV Kalamendi* for their valuable assistance during the cruise. We also  
421 thank SafetyNet Technologies Ltd for lending the light equipment used during the trials and  
422 assisting on technical issues regarding the laser diode pods. Finally, we thank the Editor of the  
423 journal and the three anonymous reviewers for the constructive comments provided that helped  
424 to improve the quality of the manuscript. These trials were conducted under the auspices of the  
425 EU-project SMARTFISH H2020 (Grant agreement number: 773521). This paper is contribution  
426 n° 1091 from AZTI, Marine Research, Basque Research and Technology Alliance (BRTA).

427 **6. REFERENCES**

- 1  
2 428 Broadhurst, M.K., 2000. Modifications to reduce bycatch in prawn trawls: A review and  
3 429 framework for development. *Rev Fish Biol Fisher.* 10, 27–60.  
4 430 <https://doi.org/10.1023/A:1008936820089>  
5  
6 431 Burnham, K., Anderson, D., 2002. Model selection and multimodel inference: a practical  
7 432 Information-Theoretic Approach, 2nd edition. Springer. New York.  
8 433 [https://doi.org/10.1007/978-0-387-22456-5\\_7](https://doi.org/10.1007/978-0-387-22456-5_7)  
9  
10 434 Campbell, R., Harcus, T., Weirman, D., Fryer, R.J., Kynoch, R.J., O'Neill, F.G., 2010. The  
11 435 reduction of cod discards by inserting 300 mm diamond mesh netting in the forward  
12 436 sections of a trawl gear. *Fish Res.* 102, 221–226.  
13 437 <https://doi.org/10.1016/J.FISHRES.2009.12.001>  
14  
15 438 Carleton, K.L., Escobar-Camacho, D., Stieb, S.M., Cortesi, F., Justin Marshall, N., 2020. Seeing  
16 439 the rainbow: Mechanisms underlying spectral sensitivity in teleost fishes. *J Exp Biol.* 223  
17 440 (8), jeb193334. <https://doi.org/10.1242/jeb.193334>  
18  
19 441 Cuende, E., Arregi, L., Herrmann, B., Sistiaga, M., Basterretxea, M., 2020a. Release efficiency  
20 442 and selectivity of four different square mesh panel configurations in the Basque mixed  
21 443 bottom trawl fishery. *Sci Mar.* 84(1), 39–47. <https://doi.org/10.3989/scimar.04975.17A>  
22  
23 444 Cuende, E., Arregi, L., Herrmann, B., Sistiaga, M., Onandia, I., 2020b. Stimulating release of  
24 445 undersized fish through a square mesh panel in the Basque otter trawl fishery. *Fish Res.*  
25 446 224, 105431. <https://doi.org/10.1016/j.fishres.2019.105431>  
26  
27 447 Cuende, E., Sistiaga, M., Herrmann, B., Arregi, L., 2022. Optimizing size selectivity and catch  
28 448 patterns for hake (*Merluccius merluccius*) and blue whiting (*Micromesistius poutassou*)  
29 449 by combining square mesh panel and codend designs. *PLoS ONE.* 17(1), e0262602.  
30 450 <https://doi.org/10.1371/journal.pone.0262602>  
31  
32 451 Dorel, D., 1986. Poissons de l'Atlantique nord-est: Relations taille-poids. IFREMER Report.  
33 452 165pp. <https://archimer.ifremer.fr/doc/1986/rapport-1289.pdf>.  
34  
35 453 Ferro, R.S.T., Jones, E.G., Kynoch, R.J., Fryer, R.J., Buckett, B.-E., 2007. Separating species  
36 454 using a horizontal panel in the Scottish North Sea whitefish trawl fishery. *ICES J Mar*  
37 455 *Sci.* 64, 1543–1550. <https://doi.org/10.1093/icesjms/fsm099>  
38  
39 456 Fryer, R.J., Summerbell, K., O'Neill, F.G., 2017. A meta-analysis of vertical stratification in  
40 457 demersal trawl gears. *Can J Fish Aquat Sci.* 74(8), 1243–1250.  
41 458 <https://doi.org/10.1139/cjfas-2016-0391>  
42  
43 459 Glass, C.W., Wardle, C.S., Gosden, S.J., Racey, D.N., 1995. Studies on the use of visual stimuli  
44 460 to control fish escape from codends. I. Laboratory studies on the effect of a black tunnel  
45 461 on mesh penetration. *Fish Res.* 23, 157–164. [https://doi.org/10.1016/0165-](https://doi.org/10.1016/0165-7836(94)00330-Y)  
46 462 [7836\(94\)00330-Y](https://doi.org/10.1016/0165-7836(94)00330-Y)  
47  
48 463 Grimaldo, E., Sistiaga, M., Herrmann, B., Gjøvsund, S.H., Jørgensen, T., 2015. Effect of the  
49 464 lifting panel on selectivity of a compulsory grid section (Sort-V) used by the demersal  
50 465 trawler fleet in the Barents Sea cod fishery. *Fish Res.* 170, 158–165.  
51 466 <https://doi.org/10.1016/J.FISHRES.2015.05.028>  
52  
53 467 Halliday, R.G., Cooper, C.G., Fanning, P., Hickey, W.M., Gagnon, P., 1999. Size selection of  
54 468 Atlantic cod, haddock and pollock (saithe) by otter trawls with square and diamond mesh  
55  
56  
57  
58  
59  
60  
61  
62  
63  
64  
65

469 codends of 130–155 mm mesh size. *Fish Res.* 41, 255–271.  
 1 470 [https://doi.org/10.1016/S0165-7836\(99\)00020-X](https://doi.org/10.1016/S0165-7836(99)00020-X)  
 2  
 3 471 Hannah, R.W., Lomeli, M.J.M., Jones, S.A., 2015. Tests of artificial light for bycatch reduction  
 4 472 in an ocean shrimp (*Pandalus jordani*) trawl: Strong but opposite effects at the footrope  
 5 473 and near the bycatch reduction device. *Fish Res.* 170, 60–67.  
 6 474 <https://doi.org/10.1016/J.FISHRES.2015.05.010>  
 7  
 8 475 Herrmann, B., Sistiaga, M., Larsen, R.B., Nielsen, K.N., Grimaldo, E., 2013. Understanding  
 9 476 sorting grid and codend size selectivity of Greenland halibut (*Reinhardtius*  
 10 477 *hippoglossoides*). *Fish. Res.* 146, 59–73. <https://doi.org/10.1016/j.fishres.2013.04.004>.  
 11  
 12 478 Herrmann, B., Sistiaga, M., Nielsen, K.N., Larsen, R.B., 2012. Understanding the size  
 13 479 selectivity of redfish (*Sebastes* spp.) in North Atlantic trawl codends. *J Northw Atl Fish*  
 14 480 *Sci.* 44, 1–13. <https://doi.org/10.2960/J.v44.m680>  
 15  
 16 481 Herrmann, B., Sistiaga, M., Rindahl, L., Tatone, I., 2017. Estimation of the effect of gear design  
 17 482 changes on catch efficiency: Methodology and a case study for a Spanish longline fishery  
 18 483 targeting hake (*Merluccius merluccius*). *Fish Res.* 185, 153–160.  
 19 484 <https://doi.org/10.1016/j.fishres.2016.09.013>  
 20  
 21 485 ICES, 2021. ICES - FAO Working Group on Fishing Technology and Fish Behaviour  
 22 486 (WGFTFB; outputs from 2020 meeting). 19-23 April 2021, Online Meeting. ICES Sci  
 23 487 Rep. 3(27). <https://doi.org/https://doi.org/10.17895/ices.pub.8022>  
 24  
 25 488 ICES, 2019. ICES-FAO Working Group on Fishing Technology and Fish Behaviour  
 26 489 (WGFTFB). 8-12 April 2019, Shanghai, China. ICES Sci Rep. 1(61).  
 27 490 <https://doi.org/10.17895/ices.pub.5592>  
 28  
 29 491 ICES, 2018. ICES-FAO Working Group on Fishing Technology and Fish Behaviour. 4-8 June  
 30 492 2018, Hirtshals, Denmark.  
 31  
 32 493 Karlsen, J.D., Krag, L.A., Albertsen, C.M., Frandsen, R.P., 2015. From fishing to fish  
 33 494 processing: Separation of fish from crustaceans in the Norway lobster-directed  
 34 495 multispeciestrawl fishery improves seafood quality. *PLoS ONE.* 10(11), e0140864.  
 35 496 <https://doi.org/10.1371/journal.pone.0140864>  
 36  
 37 497 Karlsen, J.D., Krag, L.A., Herrmann, B., Lund, H.S., 2019. Using vertical distribution to  
 38 498 separate fish from crustaceans in a mixed species trawl fishery. *Can J Fish Aquat Sci.* 76,  
 39 499 1781–1794. <https://doi.org/10.1139/cjfas-2018-0313>  
 40  
 41 500 Kennelly, S.J., Broadhurst, M.K., 2021. A review of bycatch reduction in demersal fish trawls.  
 42 501 *Rev Fish Biol Fisher.* 31, 289–318. <https://doi.org/10.1007/s11160-021-09644-0>  
 43  
 44 502 Krag, L., Herrmann, B., Feekings, J., Lund, H.S., Karlsen, J.D., 2017. Improving escape panel  
 45 503 selectivity in *Nephrops*-directed fisheries by actively stimulating fish behavior. *Can J*  
 46 504 *Fish Aquat Sci.* 74, 486–493. <https://doi.org/10.1139/cjfas-2015-0568>  
 47  
 48 505 Krag, L., Herrmann, B., Karlsen, J.D., 2014. Inferring Fish Escape Behaviour in Trawls Based  
 49 506 on Catch Comparison Data: Model Development and Evaluation Based on Data from  
 50 507 Skagerrak, Denmark. *PLoS ONE.* 9(6): e100605.  
 51 508 <https://doi.org/10.1371/journal.pone.0088819>  
 52  
 53 509 Krag, L., Holst, R., Madsen, N., 2009a. The vertical separation of fish in the aft end of a  
 54 510 demersal trawl. *ICES J Mar Sci.* 66(4), 772–777. <https://doi.org/10.1093/icesjms/fsp034>

- 1 511 Krag, L., Madsen, N., Karlsen, J.D., 2009b. A study of fish behaviour in the extension of a  
2 512 demersal trawl using a multi-compartment separator frame and SIT camera system. Fish  
3 513 Res. 98, 62–66. <https://doi.org/10.1016/J.FISHRES.2009.03.012>
- 4 514 Larsen, R.B., Herrmann, B., Brčić, J., Sistiaga, M., Cerbule, K., Nielsen, K.N., Jacques, N.,  
5 515 Lomeli, M.J.M., Tokaç, A., Cuende, E., 2021. Can vertical separation of species in trawls  
6 516 be utilized to reduce bycatch in shrimp fisheries? PLoS ONE. 16(3), e0249172.  
7 517 <https://doi.org/10.1371/journal.pone.0249172>
- 8 518 Larsen, R.B., Herrmann, B., Sistiaga, M., Brčić, J., Brinkhof, J., Tatone, I., 2018. Could green  
9 519 artificial light reduce bycatch during Barents Sea Deep-water shrimp trawling? Fish Res.  
10 520 204, 441–447. <https://doi.org/10.1016/J.FISHRES.2018.03.023>
- 11 521 Løkkeborg, S., Fernö, A., Humborstad, O.B., 2010. Behavior of Marine Fishes. Wiley-  
12 522 Blackwell, Oxford, UK. <https://doi.org/10.1002/9780813810966>
- 13 523 Lomeli, M.J.M., Wakefield, W.W., 2019. The effect of artificial illumination on Chinook  
14 524 salmon behavior and their escapement out of a midwater trawl bycatch reduction device.  
15 525 Fish Res. 218, 112–119. <https://doi.org/10.1016/J.FISHRES.2019.04.013>
- 16 526 Lomeli, M.J.M., Wakefield, W.W., Herrmann, B., 2019. Evaluating off-bottom sweeps of a  
17 527 U.S. West Coast groundfish bottom trawl: Effects on catch efficiency and seafloor  
18 528 interactions. Fish Res. 213, 204–211. <https://doi.org/10.1016/j.fishres.2019.01.016>
- 19 529 Lomeli, M.J.M., Waldo Wakefield, W., Herrmann, B., 2018. Illuminating the Headrope of a  
20 530 Selective Flatfish Trawl: Effect on Catches of Groundfishes, Including Pacific Halibut.  
21 531 Mar Coast Fish. 10(2), 118–131. <https://doi.org/10.1002/mcf2.10003>
- 22 532 Madsen, N., Tschernij, V., Hansen, K., Larsson, P.O., 2006. Development and testing of a  
23 533 species-selective flatfish ottertrawl to reduce cod bycatches. Fish Res. 78, 298–308.  
24 534 <https://doi.org/10.1016/J.FISHRES.2006.01.002>
- 25 535 Main, J., Sangster, G.I., 1982. A study of a multi-level bottom trawl for species separation using  
26 536 direct observation techniques. Scott Fish Res Rep. 26, 1–26.
- 27 537 Main, J., Sangster, G.I., 1981. A study of the fish capture process in a bottom trawl by direct  
28 538 observations from a towed under-water vehicle. Scott Fish Res Rep. 23, 1–23.
- 29 539 Melli, V., Krag, L.A., Herrmann, B., Karlsen, J.D., 2019. Can active behaviour stimulators  
30 540 improve fish separation from *Nephrops* (*Nephrops norvegicus*) in a horizontally divided  
31 541 trawl codend? Fish Res. 211, 282–290. <https://doi.org/10.1016/j.fishres.2018.11.027>
- 32 542 Melli, V., Krag, L.A., Herrmann, B., Karlsen, J.D., 2018. Investigating fish behavioural  
33 543 responses to LED lights in trawls and potential applications for bycatch reduction in the  
34 544 *Nephrops*-directed fishery. ICES J Mar Sci. 75, 1682–1692.  
35 545 <https://doi.org/10.1093/icesjms/fsy048>
- 36 546 Nguyen, K.Q., Winger, P.D., 2019. Artificial Light in Commercial Industrialized Fishing  
37 547 Applications: A Review. Rev Fish Sci Aquac. 27(1), 106–126.  
38 548 <https://doi.org/10.1080/23308249.2018.1496065>
- 39 549 O'Neill, F.G., Summerbell, K., 2019. The influence of continuous lines of light on the height at  
40 550 which fish enter demersal trawls. Fish Res. 215, 131–142.  
41 551 <https://doi.org/10.1016/J.FISHRES.2019.03.010>
- 42 552 R Core Team, 2021. R: A language and environment for statistical computing.

- 553 Robertson, J., 1989. The effect of trawl codend design on selection characteristics. In:  
554 Proceedings of World Symposium on Fishing Gear and Fishing Vessel Design, St. John's  
555 Canada, 1988. The Newfoundland and Labrador Institute of Fisheries and Marine  
556 Technology, St. John's Newfoundland.
- 557 Rochet M. J, Arregi, L., Fonseca, T., Pereira, J., Pérez, N., Ruiz, J., Valeiras J., 2014. Demersal  
558 discard atlas for the South Western Waters. 121pp. [http://www.repositorio.ieo.es/e-  
ieo/handle/10508/9074](http://www.repositorio.ieo.es/e-<br/>559 ieo/handle/10508/9074).
- 560 Ryer, C.H., 2008. A review of flatfish behavior relative to trawls. *Fish Res.* 90, 138–146.  
561 <https://doi.org/10.1016/J.FISHRES.2007.10.005>
- 562 Santos, J., Herrmann, B., Mieske, B., Stepputtis, D., Krumme, U., Nilsson, H., 2016. Reducing  
563 flatfish bycatch in roundfish fisheries. *Fish Res.* 184, 64–73.  
564 <https://doi.org/10.1016/J.FISHRES.2015.08.025>
- 565 Schrope, M., 2010. What's the catch? *Nature.* 465, 540–542. [https://doi.org/10.1038/  
465540a](https://doi.org/10.1038/<br/>566 465540a).
- 567 Thomsen, B., 1993. Selective flat fish trawling. *ICES Mar Sc.* 196, 161–164.
- 568 Walsh, S.J., Millar, R.B., Cooper, C.G., Hickey, W.M., 1992. Codend selection in American  
569 plaice: diamond versus square mesh. *Fish Res.* 13, 235–254.  
570 [https://doi.org/10.1016/0165-7836\(92\)90079-9](https://doi.org/10.1016/0165-7836(92)90079-9)
- 571 Wardle, C.S., 1986. Fish Behaviour and Fishing Gear, in: Pitcher, T.J. (Ed.), *The Behaviour of*  
572 *Teleost Fishes.* Springer US, Boston, MA, pp. 463–495. [https://doi.org/10.1007/978-1-  
4684-8261-4\\_18](https://doi.org/10.1007/978-1-<br/>573 4684-8261-4_18)
- 574 Weintraub, P.G., 2016. The importance of publishing negative results. *J Insect Sci.* 16(1), 109.  
575 <https://doi.org/10.1093/jisesa/iew092>
- 576 Wickham, H., 2016. *ggplot2: Elegant Graphics for Data Analysis.* Springer-Verlag, New York.
- 577 Wileman, D.A., Ferro, R.S.T., Fonteyne, R., Millar, R.B., 1996. Manual of methods of  
578 measuring the selectivity of towed fishing gears. *ICES Coop Res Rep.* 215, 1–126. ISBN  
579 10: UCSD:31822025768078.
- 580 Winger, P.D., Eayrs, S., Glass, C.W., 2010. Fish behavior near bottom trawls. In: *Behavior of*  
581 *Marine Fishes.* Wiley-Blackwell, Oxford, UK.  
582 <https://doi.org/10.1002/9780813810966.ch4>

**Declaration of interests**

The authors declare that they have no known competing financial interests or personal relationships that could have appeared to influence the work reported in this paper.