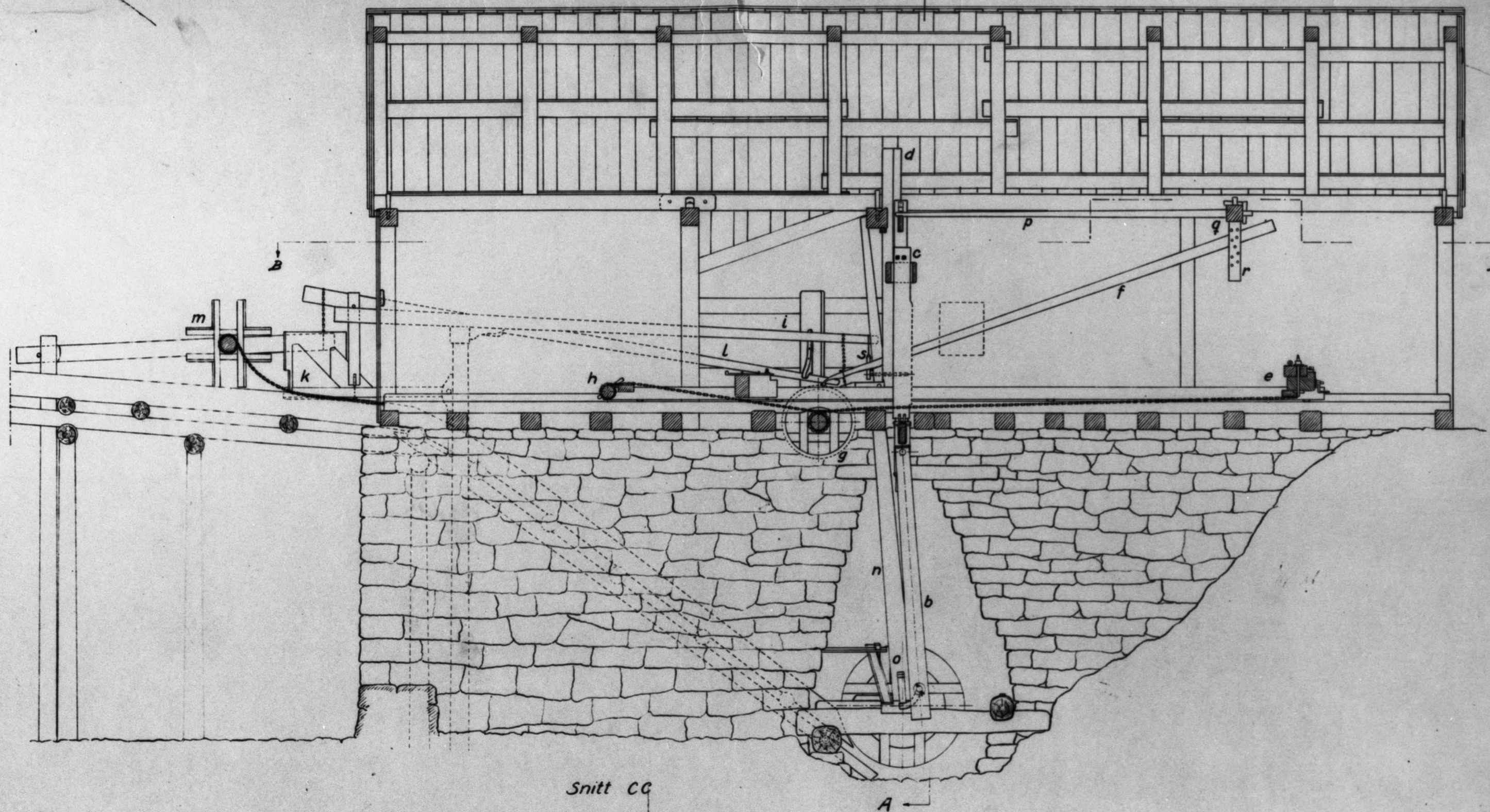
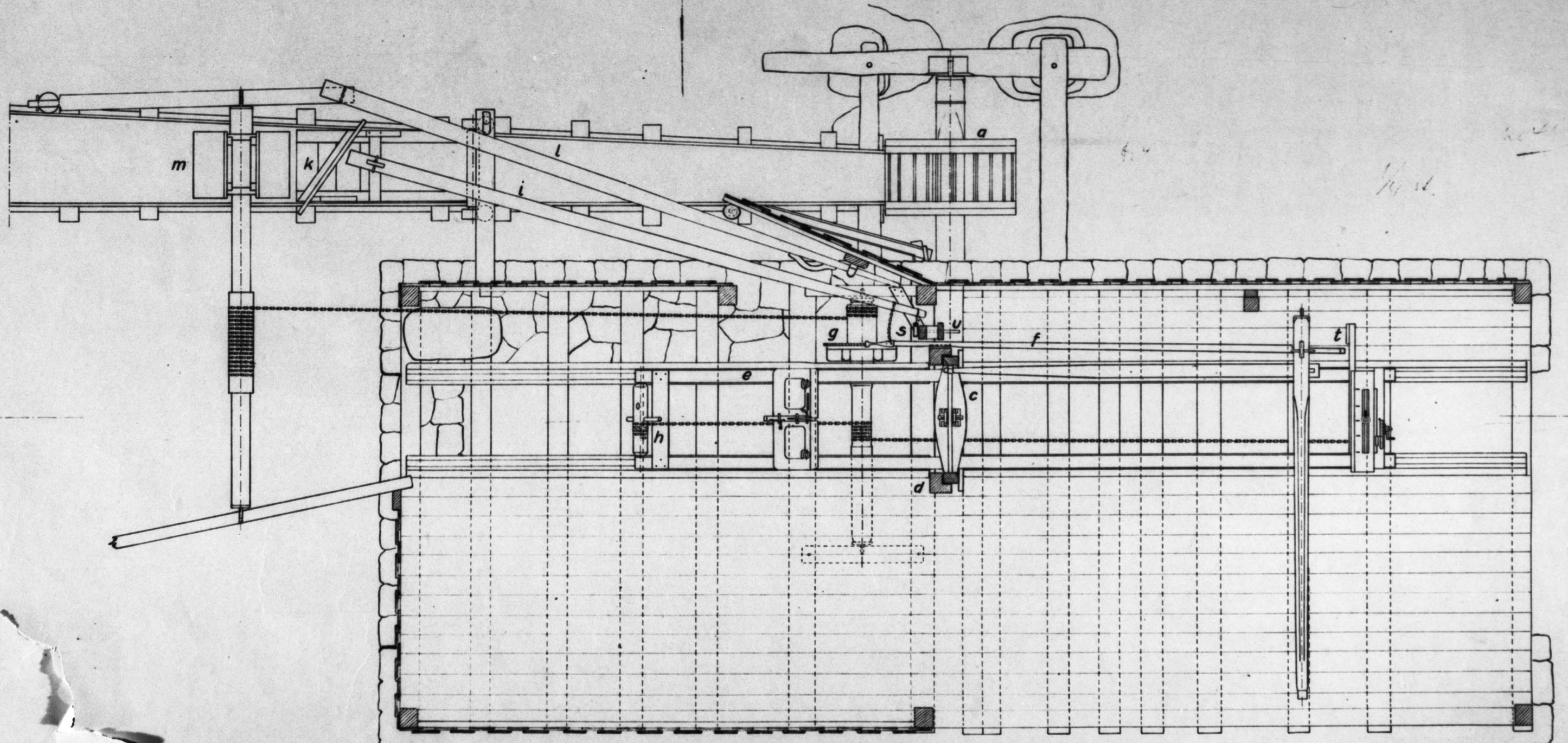


Snitt AA

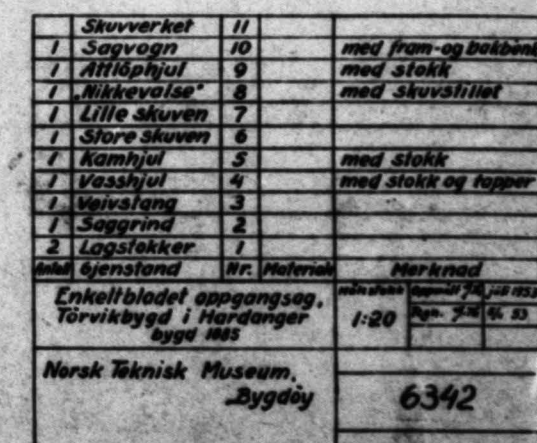
$\frac{1}{4}$ skala
4/20

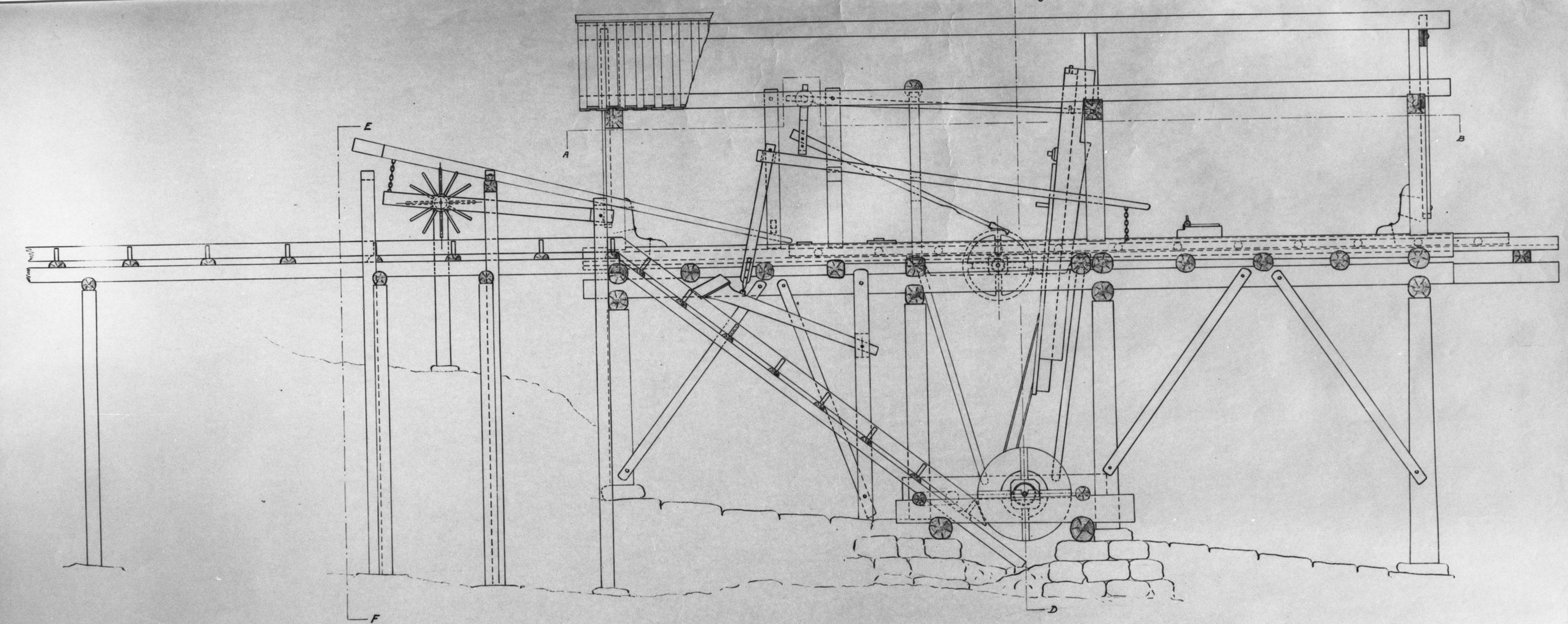


Snitt CC

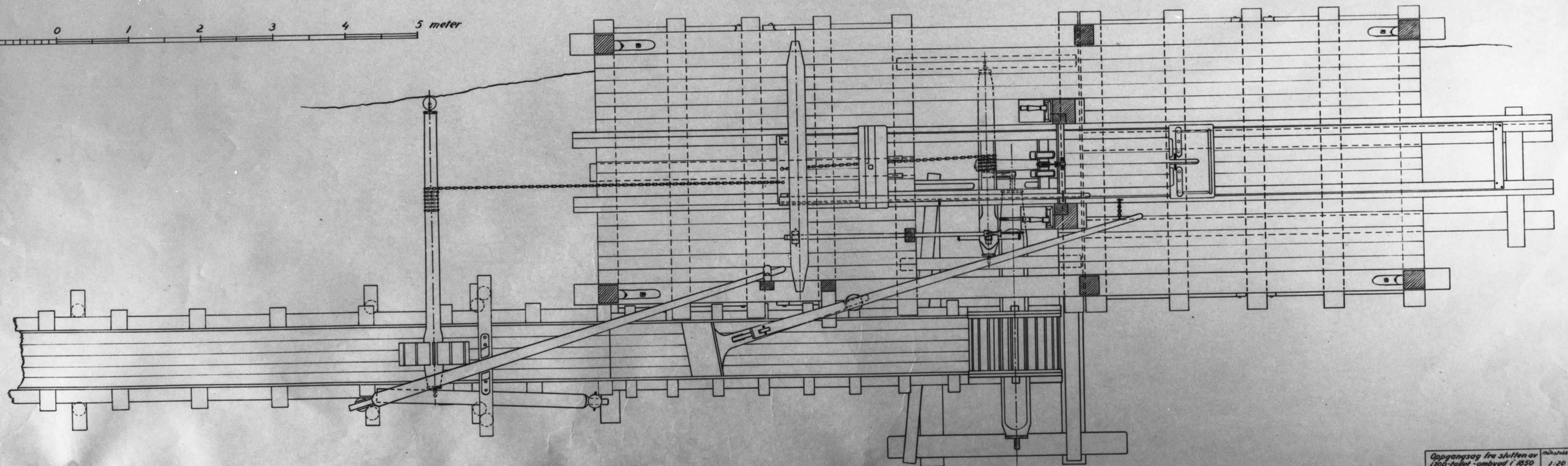


Plan BB

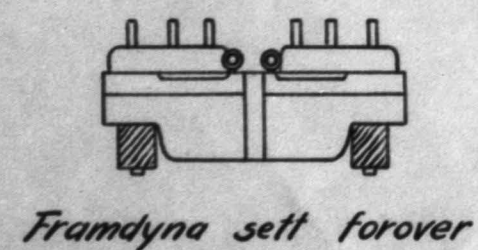
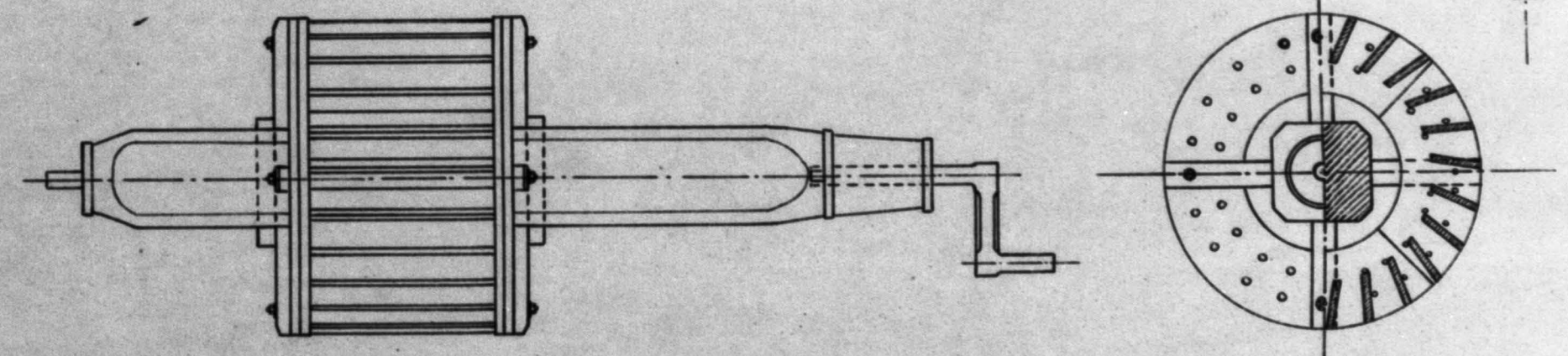
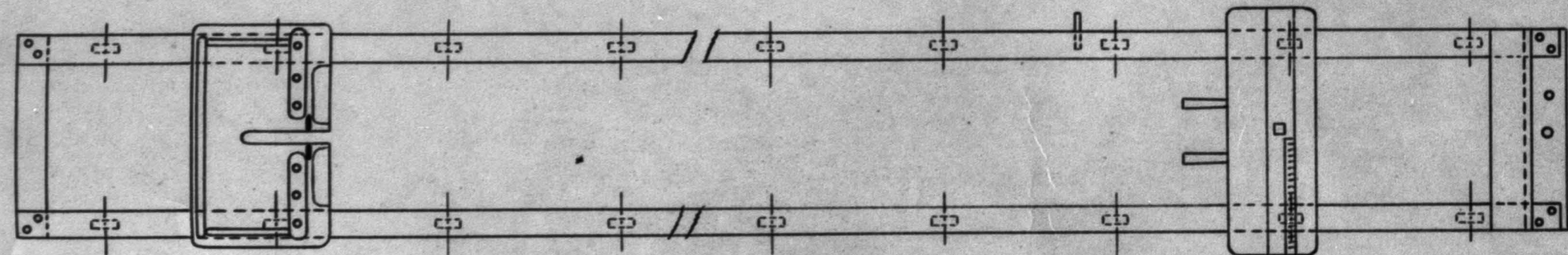
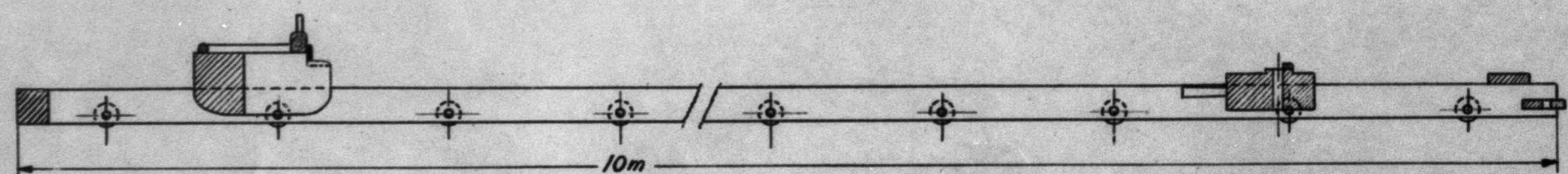
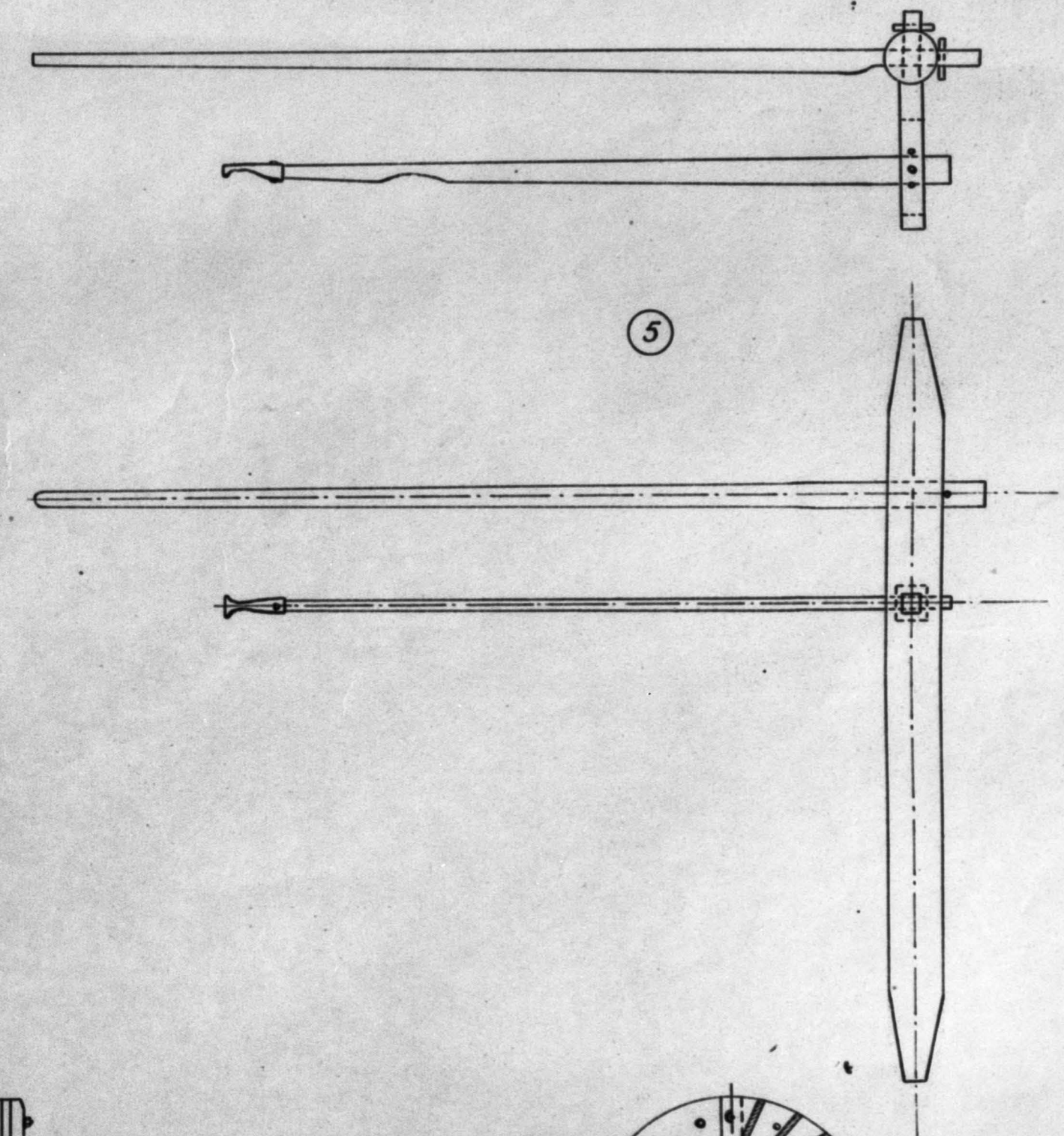
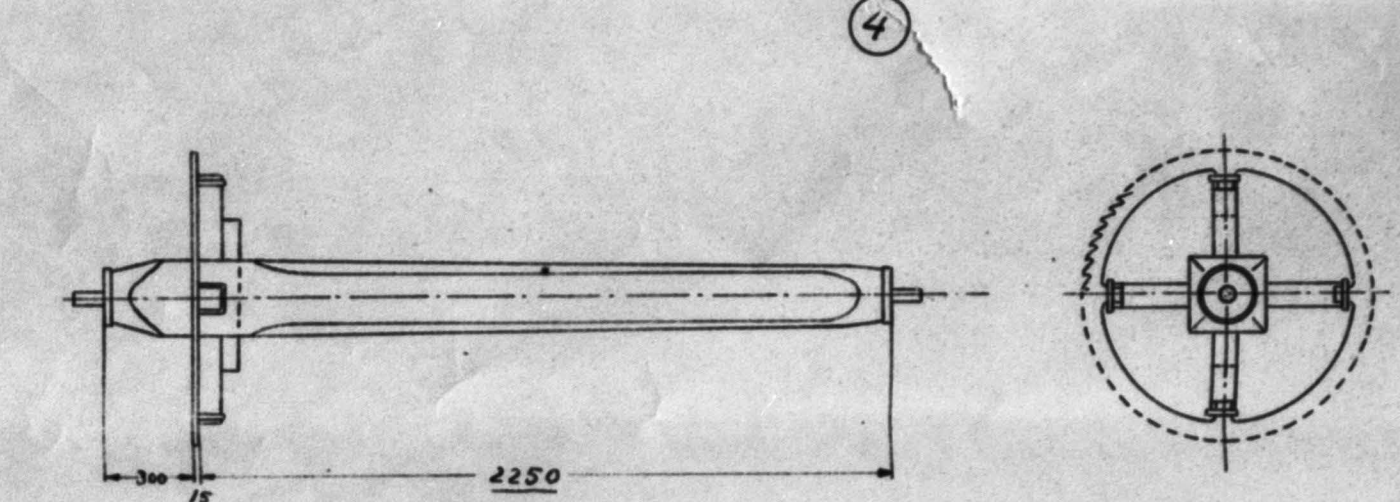
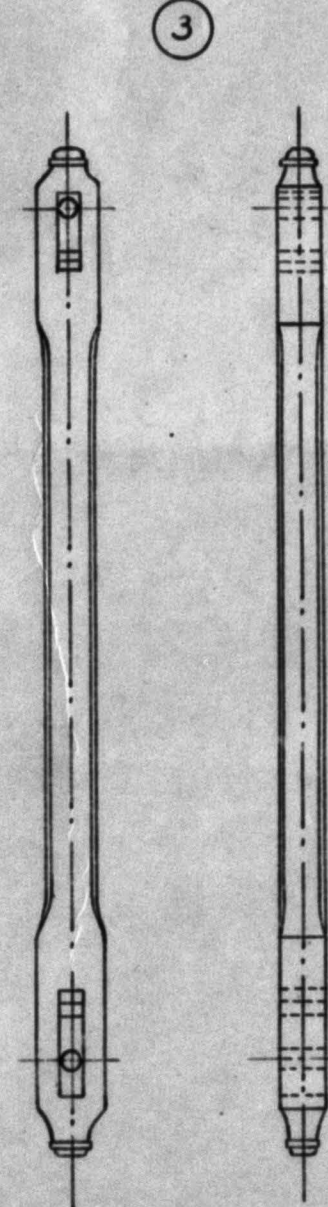
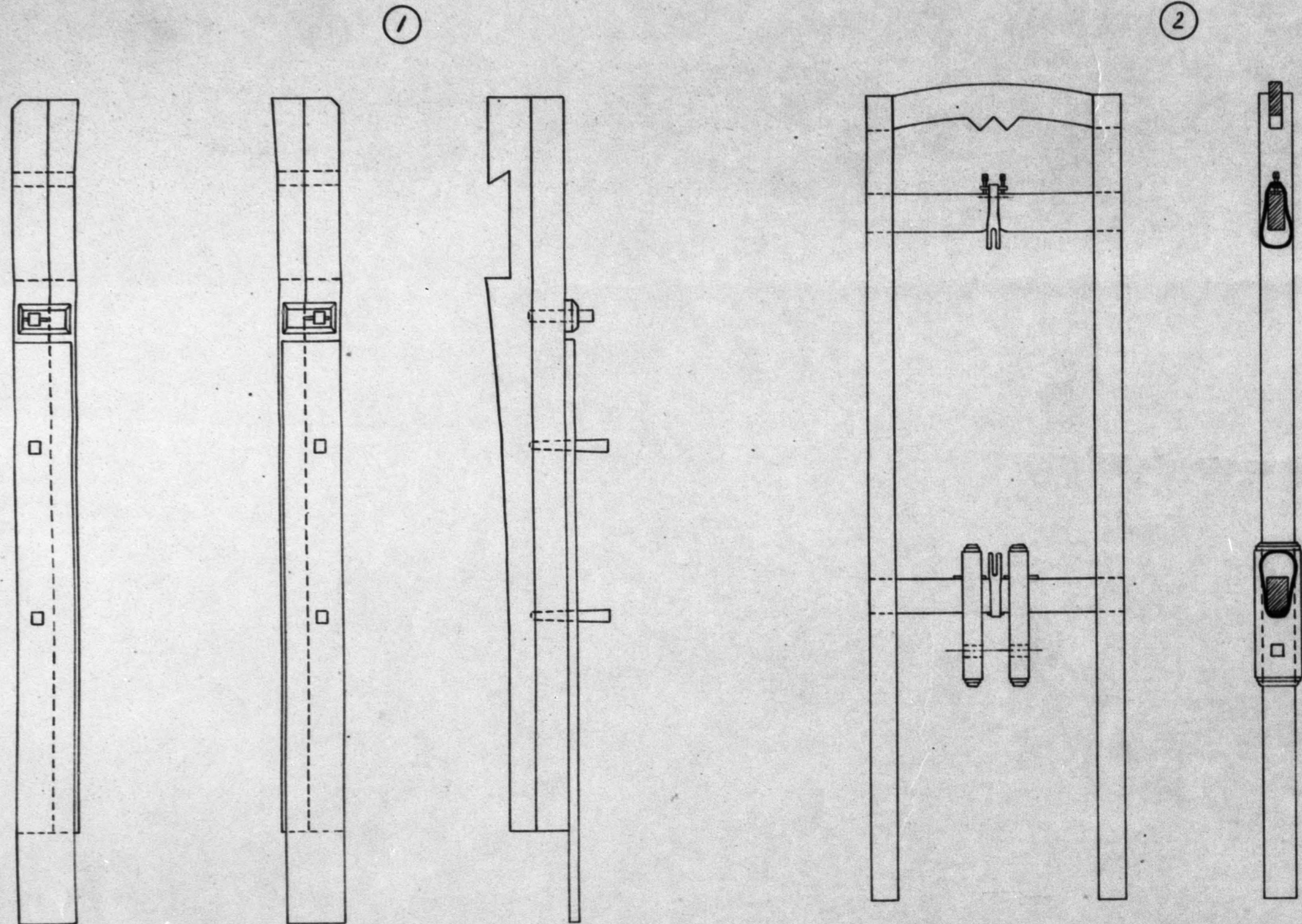




0 1 2 3 4 5 meter



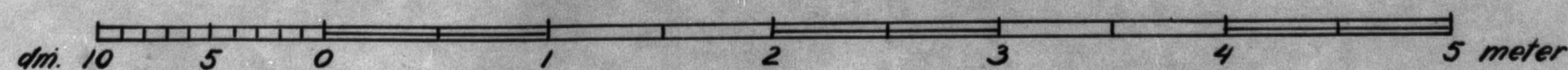
Plan etter A-B



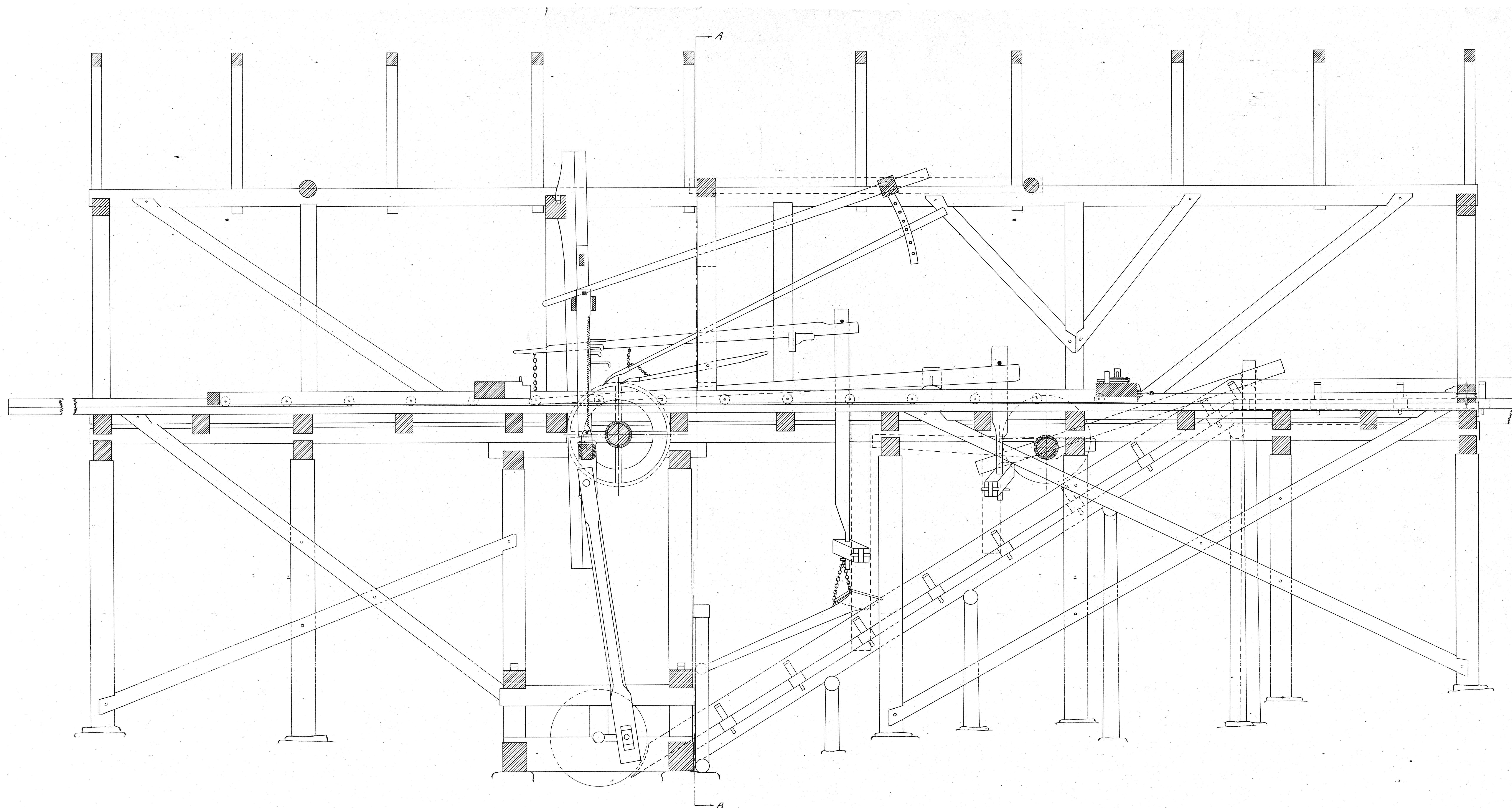
Framdyna sett forover



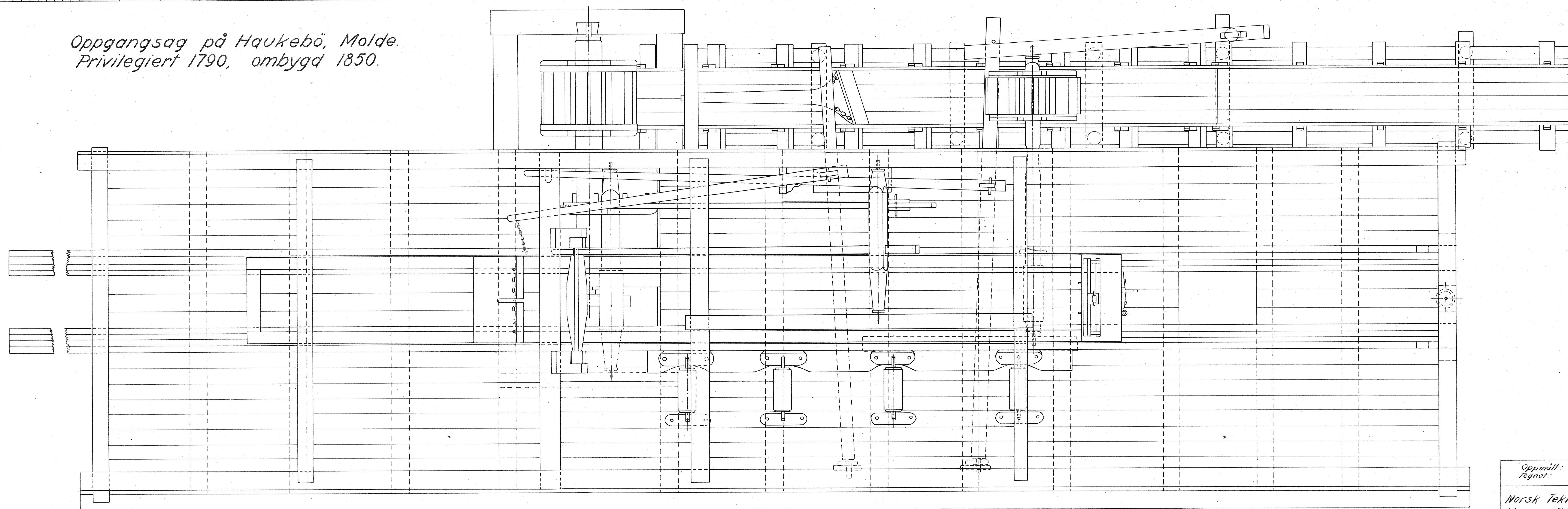
Dyna sett bakover

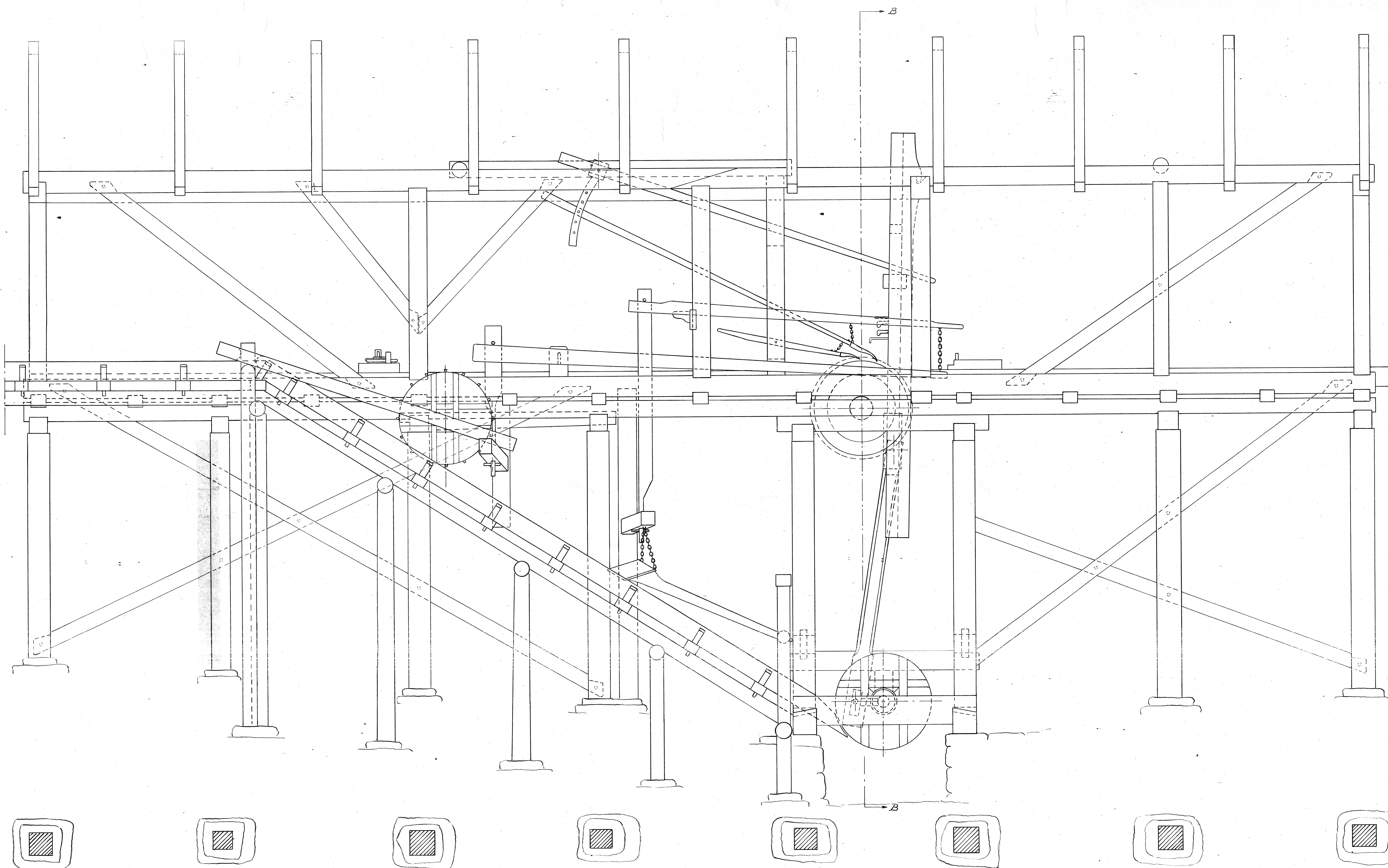


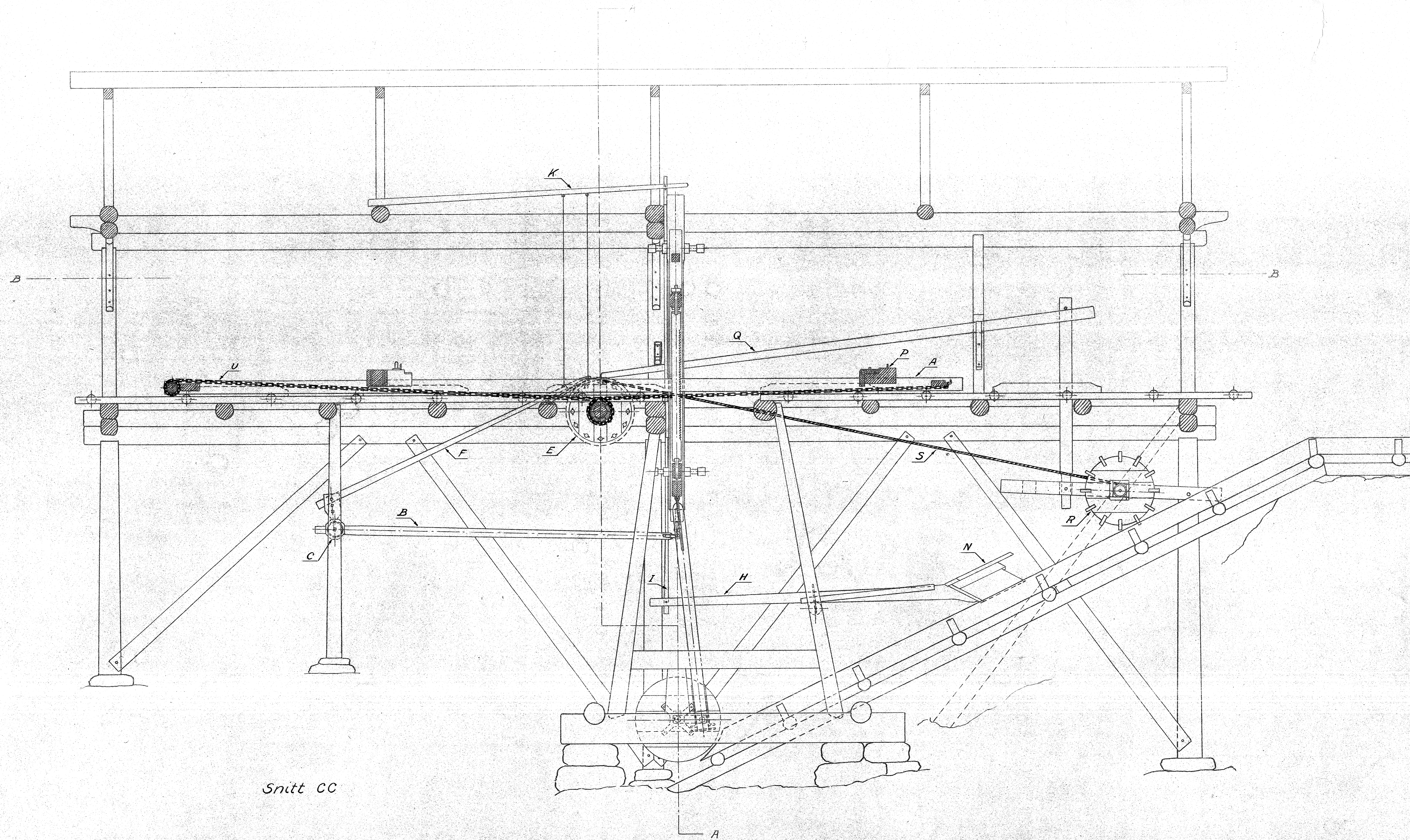
1	Sagvogn	7	---	
1	Vasshjul m/ aksel	6	---	Tapp og veiv av jern
1	Skuvverk	5	---	
1	Skruhjul m/ aksel	4	---	Hjulkrans av jern
1	Veiv	3	---	Strapper for sagblad av jern
1	Sagromme	2	---	
2	Føring for sagromme	1	Tre	
Ansk.	Grenstend	Nr.	Materiale	Merknad
Oppgangsag fra 1860-årene				Målestokk
"Fremstadsagen" i Trondheim				Oppm. 1/100
Defølger				1:20
Norsk Teknisk Museum,				
Bygdøy				
				4601



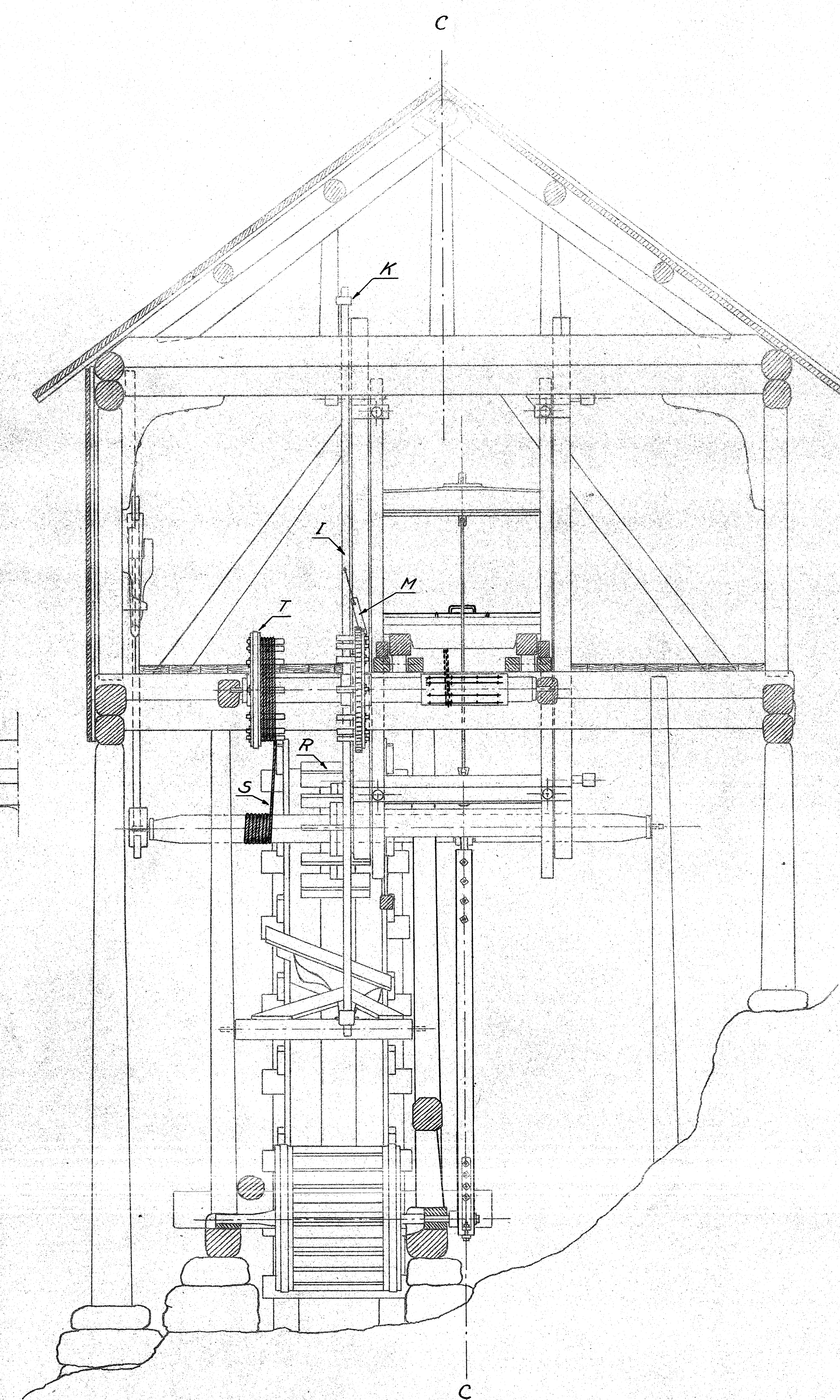
Oppgangsag på Haukebö, Molde.
Privilegiert 1790, ombygd 1850.



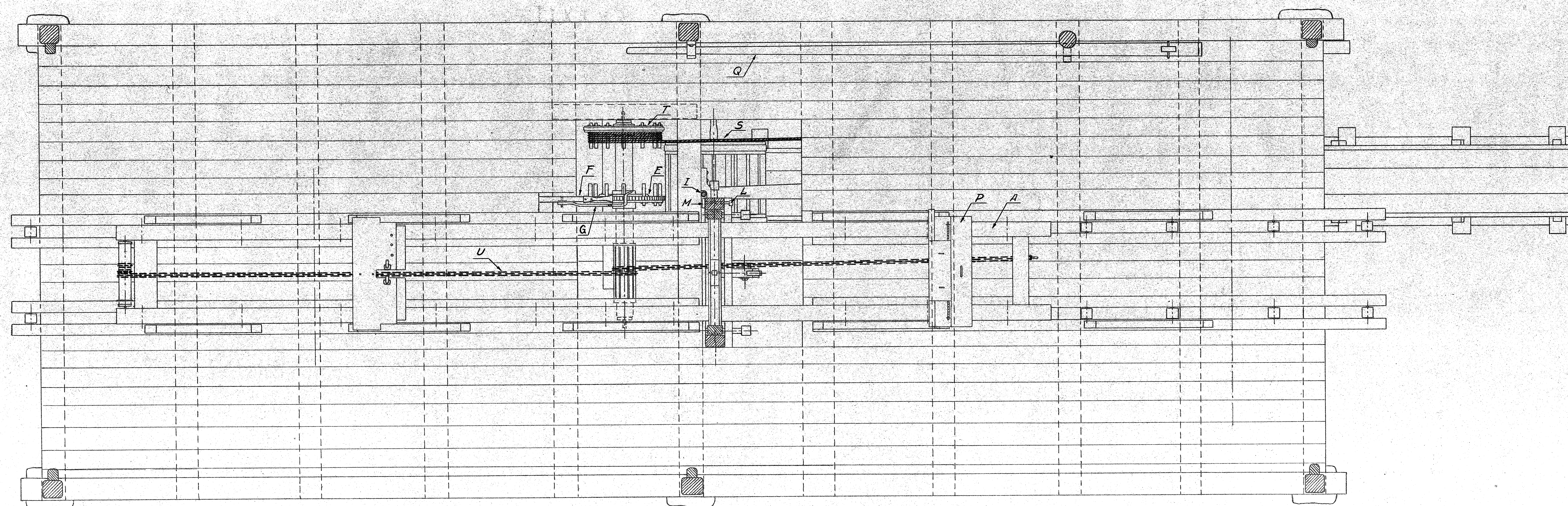




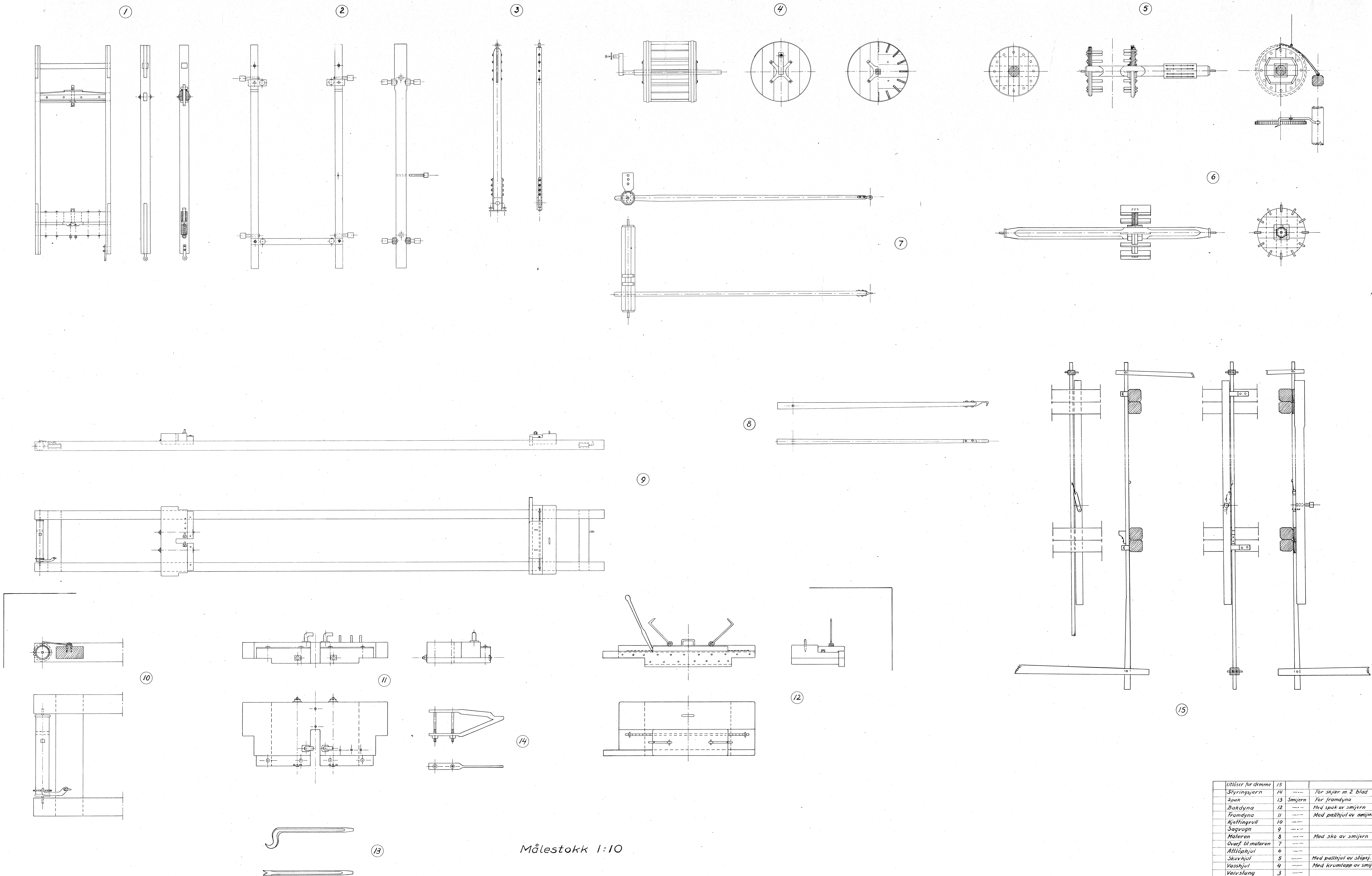
Snitt CC



Snitt AA



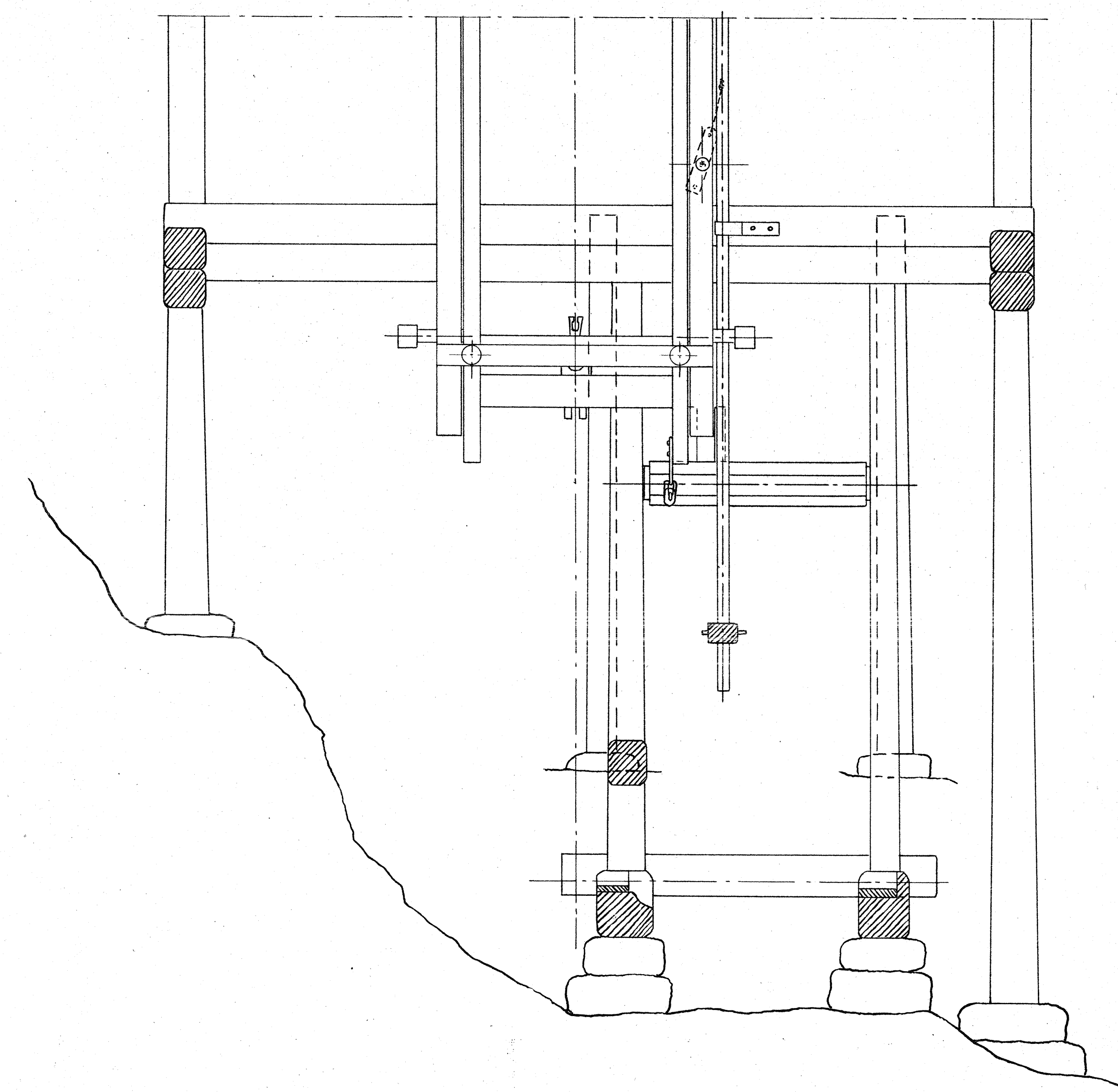
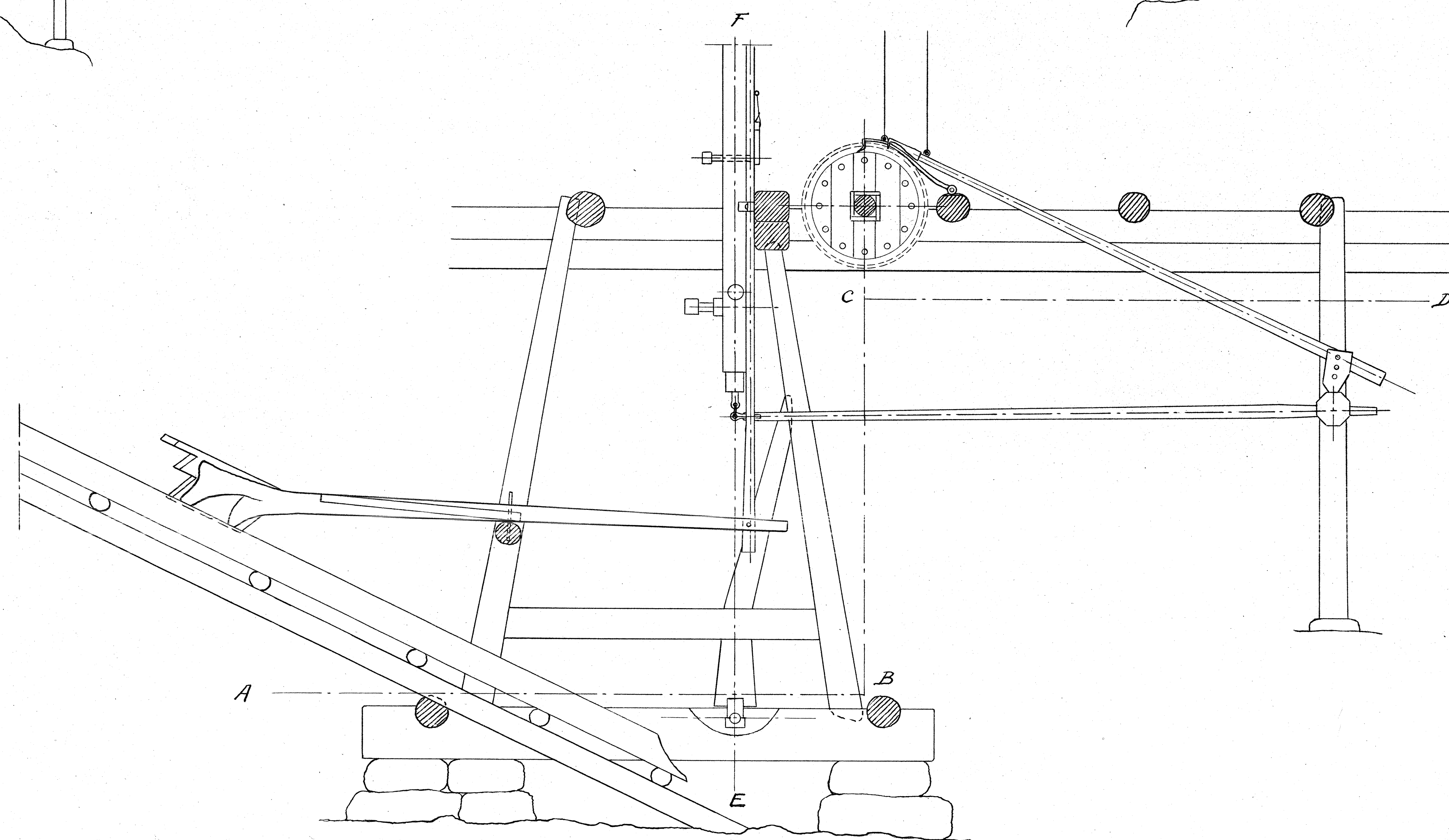
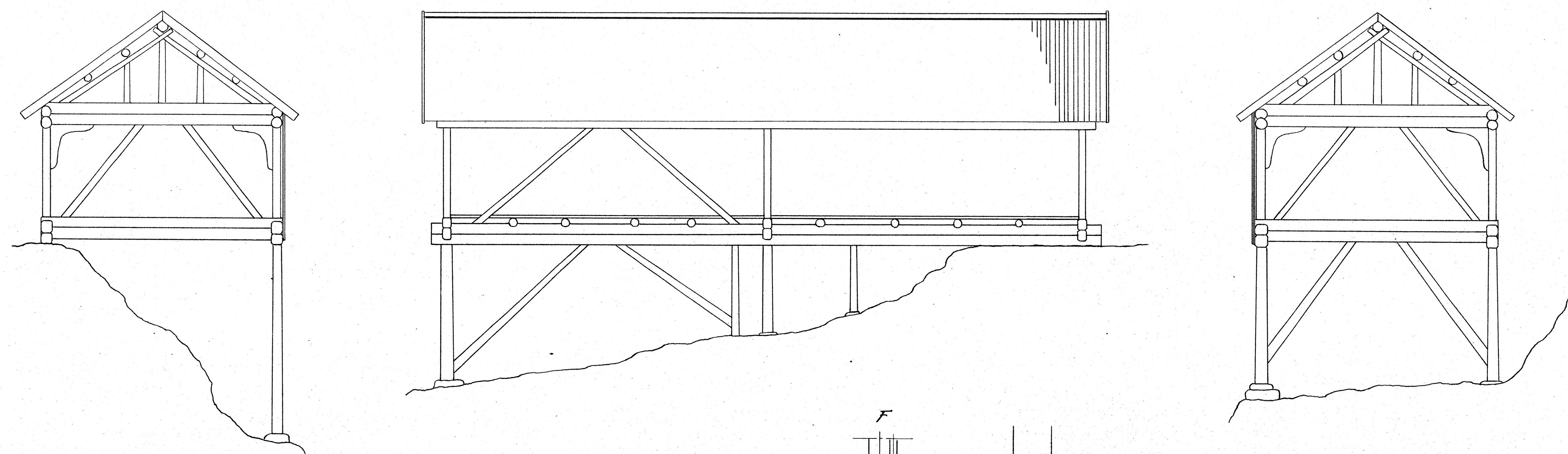
Plan ved BB



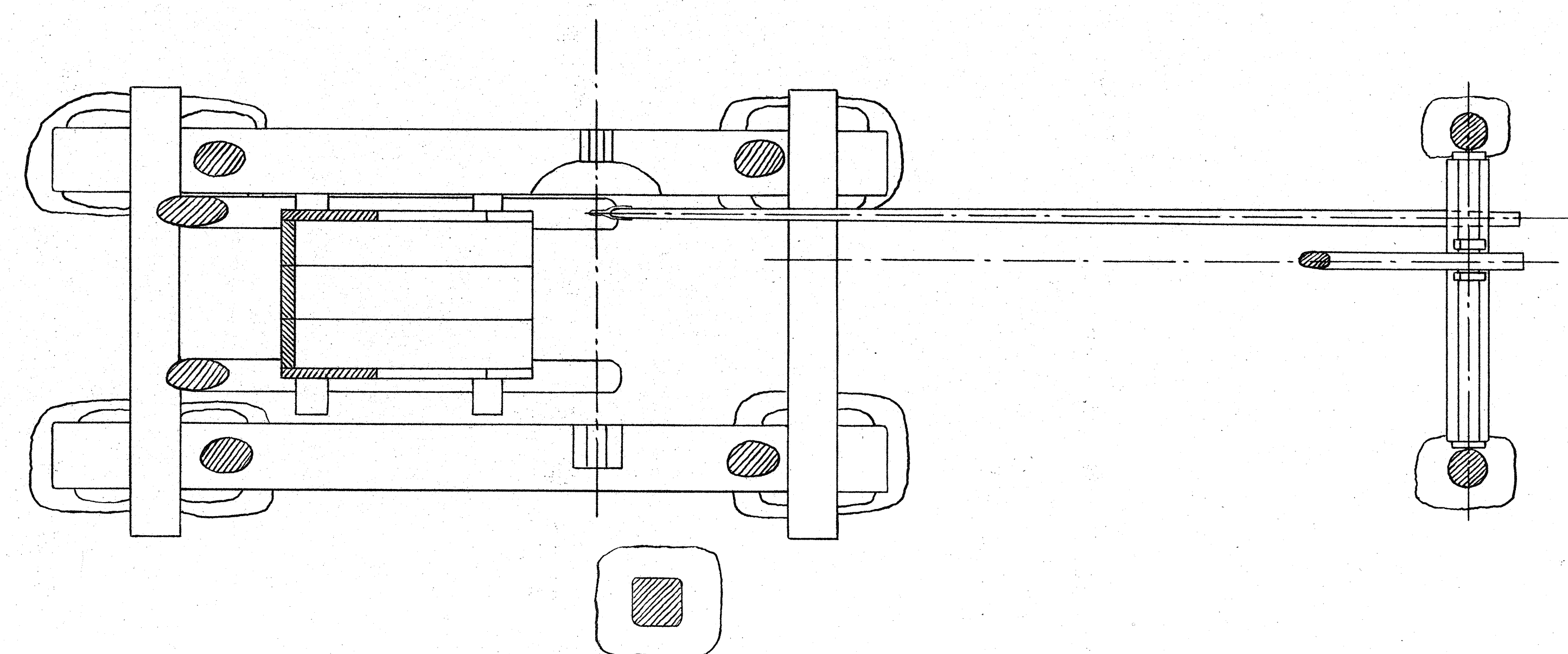
Målestokk 1:10

Utløser for demme	15		
Styringsjern	14		For skjær m 2 blad
Spær	13	Smjern	For framdyna
Bakdyna	12		Med spær av smjern
Framdyna	11		Med pallhjul av smjern
Kjæftingrull	10		
Sagvogn	9		
Materen	8		Med sko av smjern
Ovef til materen	7		
Attillshjul	6		
Skuvhjul	5		Med pallhjul av sløp
Væshjul	4		Med krumtapp av smj.
Veivslang	3		
Føring	2		
Sagramme	1	Tre	
Antsk	Nr	Materiale	Merknad
Enkeltbladet oppgangsag,		Målestokk	Oppm. 2/11, sep. 1919
Aven i korgen.		1:20	Tegn. 2/11, jan. 51
Bygd i begynnelsen av 19 årh			
Norsk Teknisk Museum,			
Bygdøy			4619

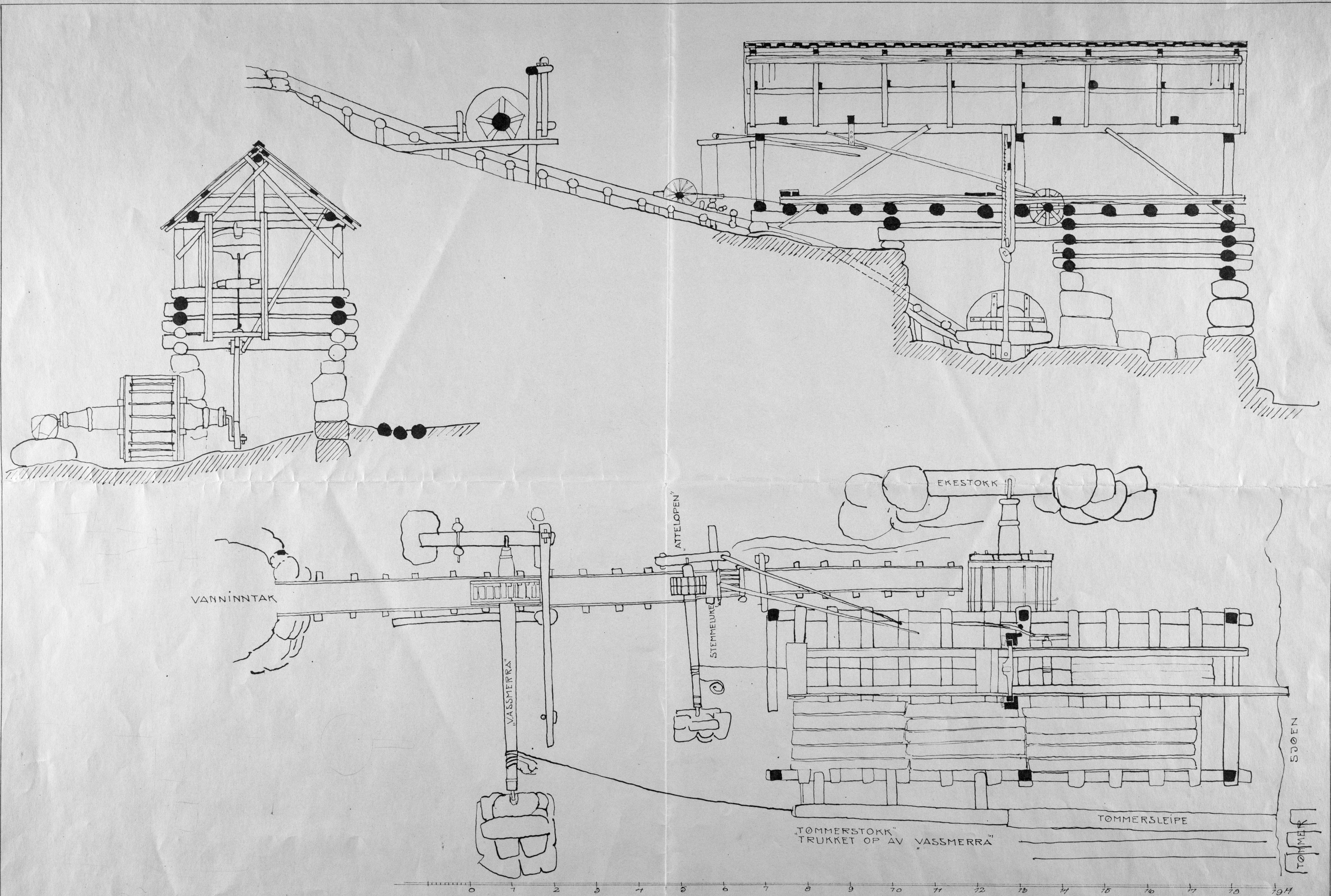
Fasade mot land
1:50

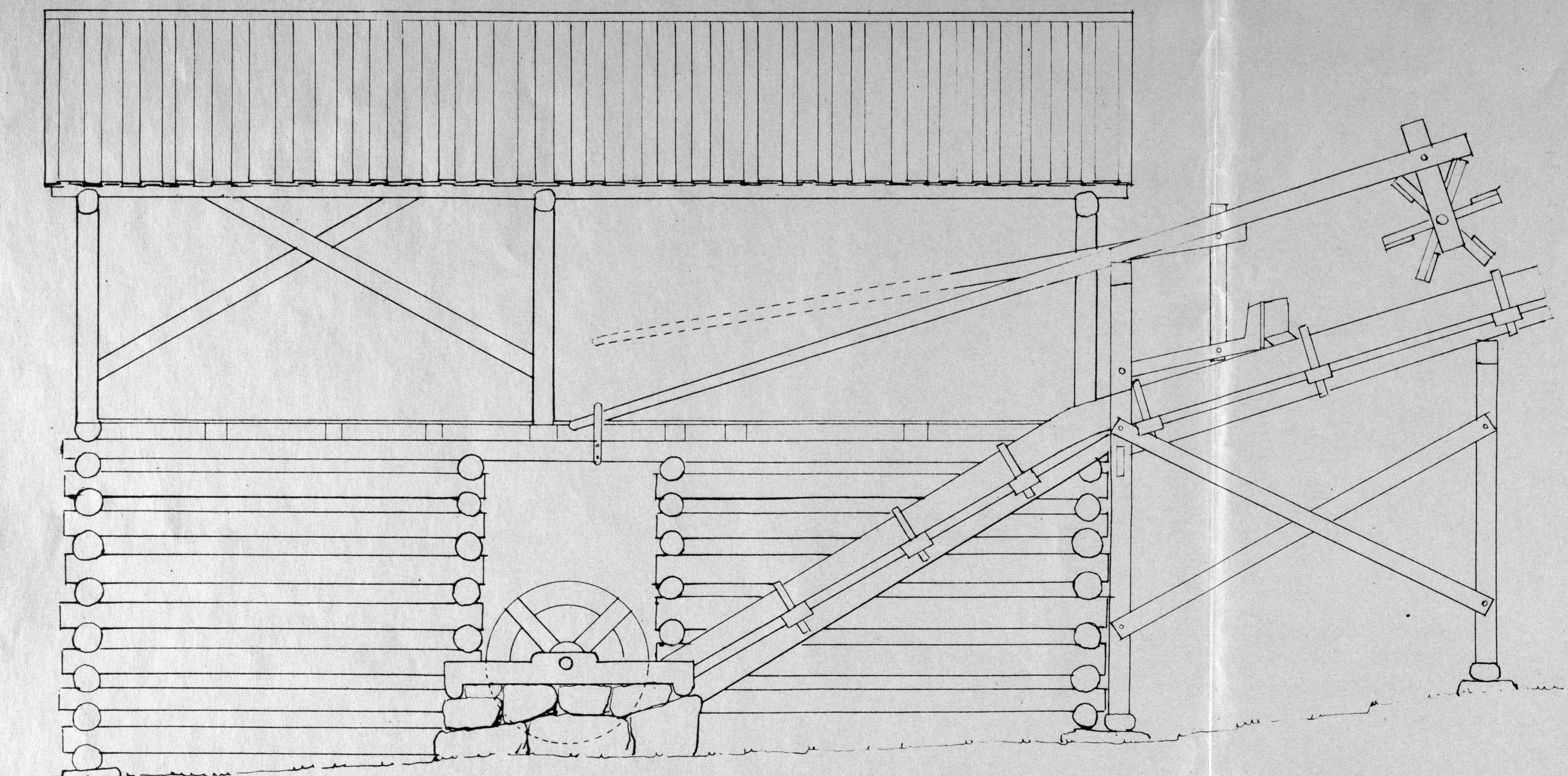


Snitt EF

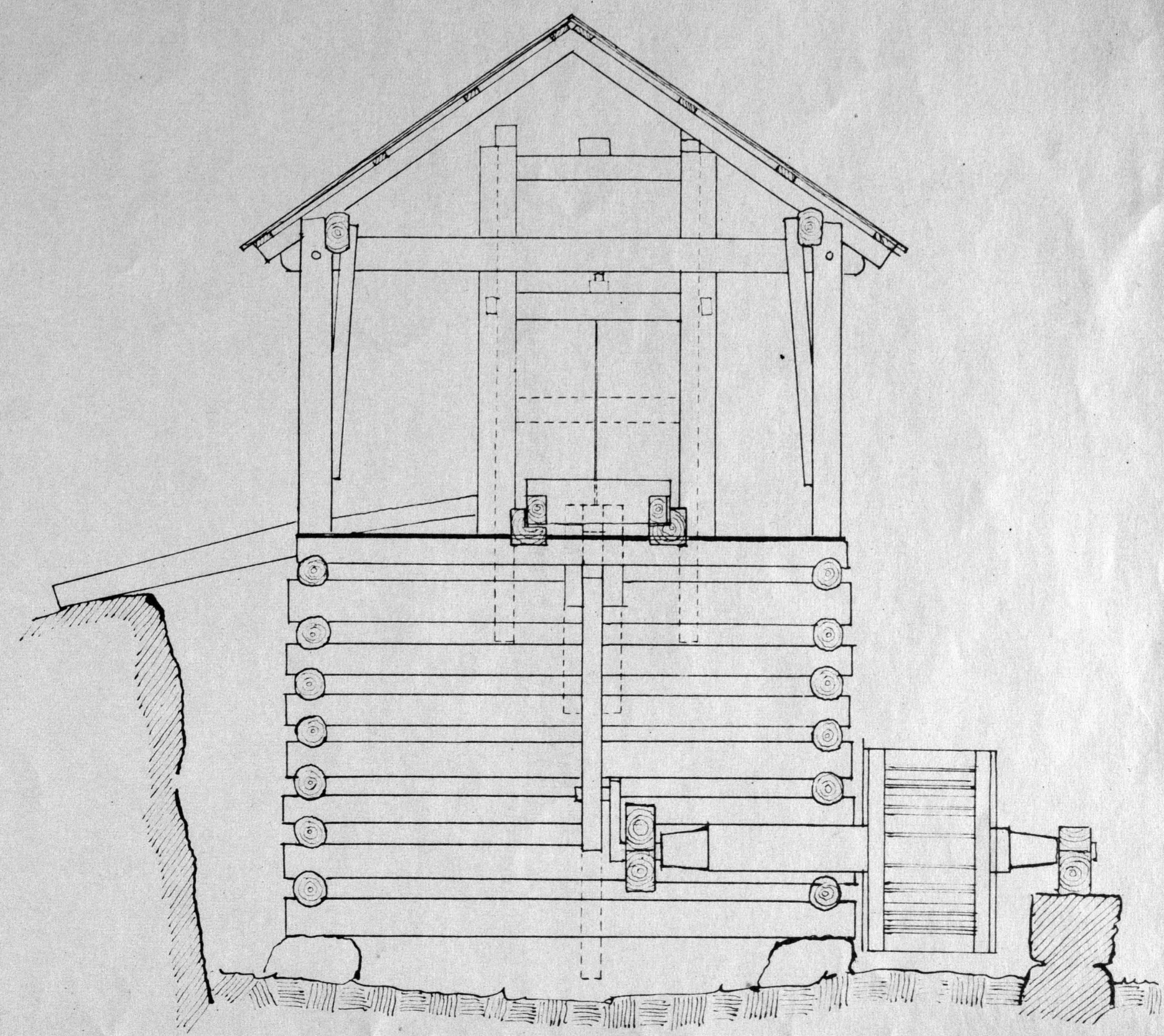


Plan ved ABCD

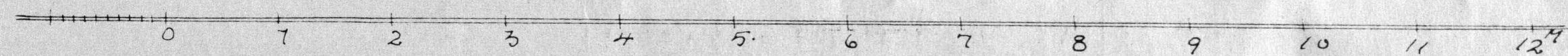




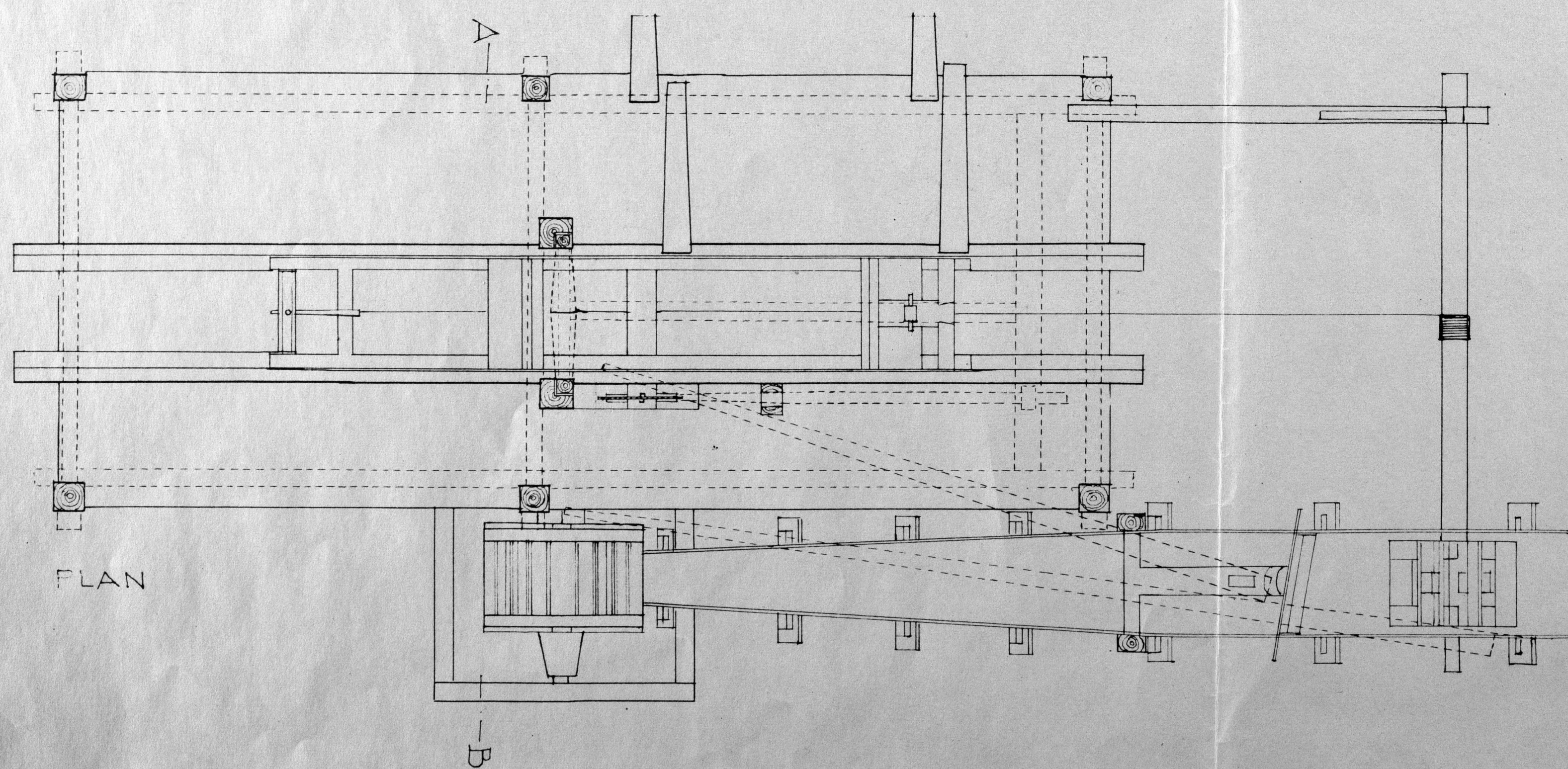
SETT FRA SIDEN



SNITT A-B



M = 1:50



PLAN

OPGANGSAG