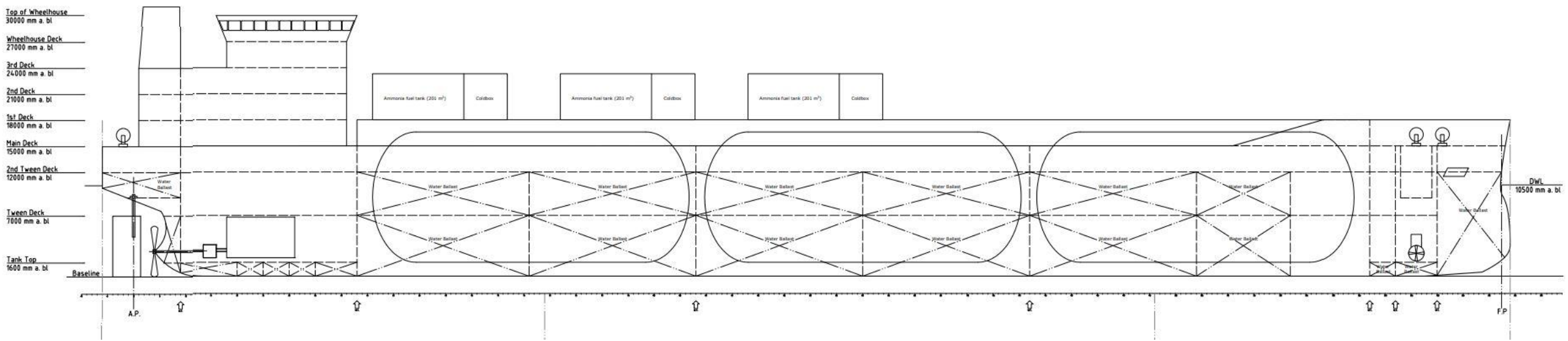


NH3 & CO2 Gas Carrier

Spesification



Main Particulars	
DWT [ton]	20 018 ton
LWT [ton]	8 442 ton
Displacement [ton]	28 460 ton
L _{pp} [m]	157,4 m
L _{oa} [m]	162 m
B [m]	24 m
T [m]	10,5 m
D [m]	15 m
C _B [-]	0,70
L/B [-]	6,56
B/T [-]	2,29
B/D [-]	1,60
L/D [-]	10,49

Machinery and Propulsion System	
Main Engine	MAN 2-stroke ammonia engine
Power Transmission	Mechanical shaft
Propeller	1 x Fixed Pith Propeller
Electricity Production	Shaft Generator (PTO/PTI/PTH) & Wärtsilä 4-stroke ammonia generator sets
Bow Thruster	Electric thruster motor

Loading Capacity	
Cargo	19 577 tons / 16 950 m3
Fuel	843 tons / 1 237 m3
Ballast	7 036 tons / 6 865 m3