

1Riparian vegetation provides crucial shelter for resting otters in a human-dominated
2landscape

3

4

5

6Authors

7Irene C. Weinberger*¹, Stefanie Muff^{1,2}, Andreas Kranz³ & Fabio Bontadina^{4,5}

8¹ Department of Evolutionary Biology and Environmental Studies, University of Zurich,

9Winterthurerstr. 190, 8057 Zurich, Switzerland

10² Epidemiology, Biostatistics and Prevention Institute, University of Zurich, Hirschengraben
1184, 8001 Zurich, Switzerland

12³ alka-kranz Ingenieurbüro für Wildökologie und Naturschutz, Am Waldgrund 25, 8044 Graz,

13Austria

14⁴ SWILD – Urban Ecology & Wildlife Research, Wuhrstr. 12, 8003 Zurich, Switzerland

15⁵ Swiss Federal Research Institute WSL, Biodiversity and Conservation Biology, 8903

16Birmensdorf, Switzerland

17

18Running page head: Resting site selection of otters

19

20*Corresponding author

21Irene C. Weinberger, Wasserwerksgasse 2, 3011 Bern, Switzerland

22Email: i.weinberger@quadrapoda.ch

23Phone: +41 79 365 60 02

24

25

26Abstract

27

28In many anthropogenic landscapes, the riparian vegetation belt is one of the few remaining
29covered structures for wildlife. It provides shelter for many species and functions as corridor.
30However, this landscape is increasingly used by humans for their leisure activities. The loss
31of riparian vegetation with a concurrent increase of human disturbance in these habitats can
32pose a serious threat to wildlife.

33One of the species potentially affected is the Eurasian otter (*Lutra lutra*). In the Alps, otters
34are nocturnal and rest during the day when human activity is high. To study the impact of
35human presence on resting site selection of otters we radio-tracked nine otters for up to 30
36months from 2010 to 2013 in the eastern Central Alps in Austria. We analysed resting site
37selection in relation to human disturbance.

38Altogether, we identified 285 resting sites. They were scattered throughout the territories of
39the individual otters. The average distance between the resting sites was 144 m. 95% of the
40resting sites were situated in the riparian vegetation, stressing the natural riparian vegetation
41as an important variable. We found evidence that human disturbance shapes resting site
42selection. While otters rested in small riparian strips when there was no human presence,
43they selected areas with a wider vegetation belt when the disturbance level increased.
44Outside the vegetation period, animals rested below ground more often than above,
45indicating that vegetation functions as visual cover.

46Our study highlights the importance for wildlife to restore riparian stretches where human
47activities are intense. A combination of spatial distribution of resting sites and the habitat
48requirement under human disturbance provides information for effective conservation
49measures for otters of which also other wildlife may benefit.

50

51

52Key words

53

54Resting site selection, *Lutra lutra*, human disturbance, conservation, riverine landscape,
55radiotracking

56

57Introduction

58

59The availability and quality of resting sites is a crucial component for the occurrence of a
60species (Manning et al., 2013) as it affects individual fitness and survival (Lutermann,
61Verburgt, & Rendigs, 2010). Besides thermoregulatory benefits and protection from adverse
62weather conditions, resting sites provide shelter from predators (Semeniuk & Dill 2005).
63Although the use of resting sites against predation is most accentuated in prey species
64(Martín and López, 1999), predators also make use of safe habitats for rest (Llaneza et al.,
652016; Oriol-Cotterill et al., 2015).

66In many anthropogenic landscapes the riparian vegetation belt is one of the few remaining
67structures that provide cover for wildlife. But riparian areas are also highly attractive
68landscapes for human leisure activities (Kienast et al., 2012), with a preference for stretches
69of natural habitat (McCormick et al., 2015). Human disturbance is one of the determinants for
70the distribution of many species (Murphy and Romanuk, 2014), e.g. by eliciting a strong anti-
71predator response that exceeds the reaction to natural predators (Ciuti et al., 2012). The loss
72of riparian vegetation with a concurrent increase of human activities may pose a serious
73threat to the survival of wildlife in these habitats.

74One of the semi-aquatic species potentially affected is the Eurasian otter (*Lutra lutra*).
75Populations of this species have declined in the last century due to habitat fragmentation,
76persecution and pesticides (Foster-Turley et al., 1990). Slow recovery of some populations
77have been observed in the last few decades (e.g. Janssens *et al.* 2006; Prigioni, Balestrieri &
78Remonti 2007).

79Otters are able to persist in anthropogenic landscapes (Madsen and Prang, 2001; Marcelli et
80al., 2012; Weinberger et al., 2016), but human disturbance remains a major concern
81(Barbosa et al., 2001; Loy et al., 2009). Riparian vegetation is a key landscape feature in
82determining the presence of otters (Kruuk, 2006). Besides a positive effect on fish biomass
83(Gregory et al., 1991), riparian vegetation may provide important cover for resting otters as
84shown for other carnivores (Santos et al., 2011).

85Due to their secretive and nocturnal lifestyle, few studies have investigated resting site
86selection of otters in freshwater systems and information remains scarce (e.g. Green, Green
87& Jefferies 1984; Beja 1996; Durbin 1998). These studies have found that resting sites are
88mostly situated close to water bodies. They can be located either above ground (“couches”)
89or in cavities below ground (“holts”) and are found in reeds, brambles, under trees, or in
90boulders (Beja, 1996; Durbin, 1998; Green et al., 1984; Kruuk, 2006). Otters use several
91resting sites within their territories (Beja, 1996; Green et al., 1984; Libois and Rosoux, 1991),
92and resting sites are thought to be clustered within the territory (Green et al., 1984).

93In other mustelid species, adverse weather conditions have been shown to influence resting
94site selection (Baghli and Verhagen, 2005; Slauson and Zielinski, 2009). Alternatively,
95humans may shape resting site selection. It has been proposed that otters may prefer holts
96over couches in areas with human disturbance, in contrast to areas where human activity is
97low (Libois and Rosoux, 1991; Loy et al., 2009; Ruiz-Olmo et al., 2005). So far the impact of
98human activities on resting site selection remains inconclusive (Beja, 1996; Durbin, 1998;
99Green et al., 1984).

100With an increasing human impact on riparian habitat, the availability of suitable resting sites
101could be a limiting factor for otter occurrence. Thus, information is required on resting site,
102selection in areas with human pressure in order to facilitate recovery and persistence of otter
103populations. Detailed knowledge about habitat requirements and the spatial distribution of
104resting sites can provide guidance for conservation measures and mitigate conflicts.

105In this study, we analysed resting site selection of otters in relation to riparian habitat and
106human disturbance in an anthropogenic landscape in the Alps. Here, the riverine landscapes
107have changed massively in the past 50 years due to an increase of industry, tourism and
108other human activities (Comiti, 2012). Today, many watercourses are channelized and their
109riparian vegetation belts are reduced or lost (Comiti, 2012; Ewald and Klaus, 2009). Human
110pressure is high: roads in the valleys are often built close to the watercourses while a
111multitude of paths within the original riparian vegetation is used for leisure activities like
112jogging, hiking or fishing. People are often accompanied by dogs, which could increase anti-
113predator responses of otters (Blanc et al., 2006; Kruuk, 1995). Nevertheless, otter
114populations in France (Dauverine and Chasserieau, 2012), Austria (Kranz and Poledník,
1152015, 2012), Italy (Pavanello et al., 2015) and Switzerland (Weinberger, 2017) are expanding
116into the Alpine Arc again.

117To test the hypothesis that otters minimize human disturbance by avoiding resting near roads
118or paths, we used an extensive set of radio tracking data of wild otters collected in the Alpine
119Arc. Additionally, we investigated if otters show a preference for resting sites hidden within a
120large riparian vegetation belt or for resting sites below ground depending on human
121disturbance. Following Green et al., 1984, we also predicted resting sites to be clustered
122within each territory.

123

124

125Methods

126

127Study area

128The field study was conducted from May 2010 to March 2013 in the eastern Central Alps in
129Styria, Austria (N47°24'36", E15°16'7"). The study area covered approximately 1760 km²,

130with about 3090 km of streams and rivers (Fig. 1). All watercourses belong to the catchment
131basin of the river Mur (mean annual discharge of approx. 110 m³/s). The river Muerz (mean
132annual discharge of 20 m³/s), forms the main valley of the study area. The elevation of the
133valley floor ranges from 458 to 974 m, with the surrounding mountains up to 1850 m. Urban
134areas, intensive agriculture, and iron industry dominate the lower valleys. Agriculture,
135forestry, and small settlements contribute to the landscape in the higher valleys. Many
136stretches of the watercourses are modified or regulated for electrical power exploitation. In
137many parts, the riparian vegetation strip is lost or reduced to a width of one to eight meters.
138Along river banks, people often practice outdoor activities such as jogging, cycling and
139fishing.

140

141Capture and radio tracking

142Captures took place in spring and autumn between 2010 and 2012. Otters were trapped with
143soft-catch traps with rubber pads (No. 3, Oneida Victor Inc., Cleveland, Ohio) coupled with
144GSM trap alarms (Ó Néill et al., 2007). Within 30 minutes of capture, animals were removed
145from the traps. After the intraperitoneal implantation of the transmitter (model 325/L, model
146400/L, Telonics Inc., Mesa, Arizona) in a vet-ambulance, the animals were released within 24
147hours of capture in close proximity to their capture site. Animals were tracked up to four
148times a week between sunrise and sunset, spaced out over the day. Initially, the animals
149were tracked several times during the day in order to ascertain the use of a single resting site
150per day. Tracking of otters in resting sites was conducted by a single person by foot using a
151receiver (Sika, Biotrack Ltd, Dorset UK) and a handheld 3-element Yagi-antenna. The activity
152of the animals was deduced from the variation in signal strength and classified into three
153categories: (1) active, (2) passive, and (3) unknown when the activity could not be
154determined. When passive, the resting site was identified by homing-in to an accuracy of <5
155m. All resting sites were georeferenced using a portable GPS (Etrex 10, Garmin Ltd.).
156Animals were tracked until the transmitter failed, the animal disappeared, or until the end of
157the field study in March 2013. Data for the first ten days after surgery were discarded.

158

159Habitat variables

160Environmental parameters of newly identified resting sites were assessed at a later date
161when the animal was absent. The type of resting site was categorized into one of the three
162following classes: “couch” (above ground, in the vegetation, or in a structure such as a stick
163pile), “holt” (below ground) and “unknown” (no clear assignment possible). The type of
164resting site could often be attributed to the presence of a single structure where the resting
165site was located, e.g. stick pile or crevice in the river bank. Only in 43 out of 262 resting sites
166(16%) no classification was possible. The type of water body closest to the resting site was

167categorized into three classes: a) “main riverbed” (used as reference category in all
168analyses), b) “abstracted water” (water derived from the main river for electric power
169generation) and c) “standing water” (ponds and wetlands, Appendix Fig. 1). Riparian
170vegetation width was measured at the resting site. The type of vegetation was classified into
171three categories of naturalness (Appendix Fig. 2), namely “natural” (trees, bushes, reed or
172herbaceous stretches with at least a tree or bush within 25 m along the bank side; used as
173reference categories in all analyses), “modified” (grass or herbaceous plants, no trees within
17425 m along the bank side), or “artificial” (no vegetation).

175The riparian vegetation can function as a visual protective cover. In the study area, the
176riparian vegetation belt is quite fragmented and its potential as a visual cover is reduced.
177Locally, the land use along the watercourses is very intense, reducing the width of the natural
178riparian belt to less than 1 m. The visual cover provided by the vegetation also changes
179throughout the year, e.g. tall vegetation is flattened and the deciduous trees and shrubs have
180lost their foliage, resulting in a loss of visual protection. To acknowledge for this effect, we
181incorporated a binary indicator for the vegetation period (1 = during vegetation period, 0 =
182outside vegetation period). Onset and end of this period varied within the study area and are
183considered to coincide with the date when the average daily temperature rose above- or fell
184below 10°C, respectively (data provided by the GIS office in Styria, Austria). Local
185temperature and snow cover data were provided by the meteorological stations in Styria,
186Austria.

187Assuming that otters flee into the water only when the source of disturbance is on their bank
188side, we calculated the distance to the nearest disturbance on the bank side of the resting
189site. Disturbances included a) distance to the nearest road or path (whichever was closer),
190and b) human disturbance. Anecdotal data by Green *et al.* (1984) indicated that otters
191respond only to very close disturbances. Also, otters use several resting sites within their
192territories throughout the year, sometimes switching them daily. We therefore incorporated
193the likelihood of experiencing disturbances at two different temporal scales: year and day.
194Alternatively, otters may habituate to human disturbances depending on their predictability.
195In a working area, humans move along the predefined paths which can be anticipated by the
196local wildlife. This might be contrary to the erratic pathways, free ranging dogs may take. To
197take these considerations into account, we estimated human disturbance for three types of
198disturbances within 15 m of the resting site (Table 1): 1. Likelihood of disturbance over the
199year categorised as “none” (area not accessible; reference category), “occasionally” (in
200proximity to farmland but no path), or “daily” (close to roads or houses). 2. Likelihood of
201human disturbance throughout the day, estimated by the existence and use of paths or
202roads: “none” (not accessible or no path discernible; reference category), “once” (rarely used
203hiking paths), “every few hours” (cycling paths and tracks), or “permanent” (working sites or
204in settlements). 3. The predictability of the daily disturbance classified into four categories

205with decreasing predictability of their movements: “none” (no activity; reference category),
206“working” (industrial zones, settlements and farmland), “spare time” (people jogging, hiking,
207or fishing), and “dogs” where dogs were taken for walks or lived (spare time, house, or
208farming). When several categories were present, the one with the lowest level of
209predictability was used (spare time with dogs < spare time < working < none). All habitat
210variables were then attributed to the locations using ArcMap 10 (ESRI, 2011).

211

212*Selection of resting sites*

213For each individual, a set of all known resting sites and an equal number of alternative
214random locations was drawn from the available area. This area was defined for each
215individual by a buffer around the waterbodies within its home range, excluding the tributaries.
216Home range size was estimated with a 95% fixed kernel (for details see Weinberger *et al.*
2172016 and Fig. 2). The width of the buffer around the waterbodies was calculated to be 24 m,
218which equals the mean + 2 SD of the distance of all tracked resting sites to the nearest water
219body. Where riparian vegetation was missing, e.g. within settlements or along roads, we
220added a buffer of 1 m to ascertain that all types of vegetation were included in the available
221area without forcing an over-representation of the type “artificial”. For all those locations,
222habitat type, vegetation width, vegetation type, distance to the nearest path, likelihood of
223human disturbance throughout the year, likelihood of human disturbance throughout the day
224and predictability of the daily disturbance were estimated (Table 1, “A”). All continuous
225variables were centred and scaled (mean of 0, variance of 1). A standard logistic regression
226model was fitted with a binary response variable as indicator for available (0) or used (1)
227locations. All variables were first included as fixed effects, plus a random intercept for the
228individuals. The model with the lowest AICc was selected (Burnham and Anderson, 2002).

229Given the slope coefficients β_1, \dots, β_n , a Resource Selection Function (RSF) is obtained from

230

$$RSF = w(x) = \exp(\beta_1 x_1 + \dots + \beta_n x_n),$$

231where $x = (x_1, \dots, x_n)$ are the predictor variables included as fixed effects (Manly *et al.*, 2002).
232For any value of the independent variables, $w(x)$ corresponds to the respective proportion
233between the frequency of use (f_u) and the availability (f_a), and reflects the preference for a
234habitat with covariates x compared to its availability. Values of $w(x) > 1$ represent habitats
235that were over-proportionally used by the animal with respect to their availability and $w(x) < 1$
236represents habitats that over-proportionally used.

237

238*Selection of the type of resting site*

239Otters use either holts or couches as resting sites. This selection may be driven as protection
240either to adverse weather conditions or to disturbance elicited by humans. In order to identify
241the driving force of this selection, we carried out a complementary analysis focussing on the

242type of resting site. We used the complete data set of all individuals throughout the tracking
243period. We discarded all data where the type of resting site could not be attributed to either
244holt or couch. This resulted in 1720 data points (mean = 191 per animal, range = 18 - 441). A
245logistic regression was applied with the resting site type encoded as binary response variable
246(0 = below, 1 = above ground) and the variables habitat type, vegetation width, vegetation
247type, vegetation period, temperature, snow cover, distance to the nearest path and human
248disturbance throughout the year, human disturbance throughout the day and predictability of
249the daily disturbance (Table 1, "B") as explanatory variables.

250

251*Distribution of resting sites within the home range*

252Otters use multiple resting sites throughout the year. Location and distribution of good quality
253habitat for resting sites may be crucial for the establishment of a territory. We therefore
254measured the distances between the resting sites along the main watercourses and
255calculated the 50% and 95% quantiles of the respective distribution in order to obtain an
256estimate of both typical and limiting distances.

257

258

259Results

260

261Between May 2010 and March 2013, 13 otters were captured. Of those, nine otters (three
262males and six females) were radio tracked for an average of 655 days (range = 229 - 1032).
263Their resting sites were successfully located on 1814 days (mean = 208, range = 65 - 399),
264excluding 60 occasions (3.2%) when individuals were not found. The animals were nocturnal
265and they remained in their chosen resting site throughout the day. Only in July and August,
266rare diurnal sallies were noted. Animals were tracked at a total of 305 distinct resting sites,
267with an average number of 33 resting sites per individual (range = 14 - 54, Fig. 2 and
268Appendix Table 1). Nine resting sites were used by two different individuals. The composition
269of the individuals involved varied depending on the resting site but were always of opposite
270sex. Descriptive data could be obtained for 285 resting sites. Of those, 271 (95%) were
271within the riparian vegetation and eight (3%) were either situated in the riparian vegetation
272but disconnected by a hiking path from direct access to the water or were holts in revetments
273with no vegetation. Only six resting sites (2%) were outside the riparian vegetation, all above
274ground.

275

276*Selection of resting sites*

277The dataset for this analysis included a total of 285 resting sites, plus the same number of
278random locations. The model with the lowest AICc included the variables habitat type,
279vegetation width, vegetation type, distance to the nearest path, likelihood of human

280 disturbance throughout the day, the predictability of the daily disturbance, the interaction
281 between vegetation width and the likelihood of human disturbance throughout the day, plus
282 the animal-specific random slope for distance to path (Table 2). Vegetation type was
283 included in all three models with lowest AICc (Appendix Table 2), and the best model indeed
284 provides very strong evidence that it is an important explanatory variable ($p < 0.001$).
285 Compared to random locations, animals preferred resting sites in areas with a natural
286 vegetation type (estimates for the categories *modified* and *no vegetation* were both clearly
287 negative, with $p < 0.001$ and $p = 0.005$, respectively). There is some evidence that resting
288 sites are selected further away from paths (estimate = 0.39, $p = 0.05$). Besides vegetation
289 type, likelihood of human disturbance throughout the day was retained in all three models
290 with the lowest AICc. Human disturbance was associated with the choice of resting site
291 locations in dependence of the vegetation width ($p < 0.001$ for the respective interaction term,
292 see Fig. 3 for a graphical representation). In the absence of daily human disturbance,
293 animals over-proportionally used resting sites with riparian strips up to 10 m wide (Fig. 3a).
294 However, this preference changed when there was a high frequency of daily human
295 disturbance, with otters then preferring areas with larger vegetation width, although the
296 uncertainty in the RSF was large (Fig. 3d). In the presence of intermediate disturbances, the
297 otters showed no clear preferences on vegetation width (Fig. 3b and c).

298

299 *Selection of the type of resting site*

300 The type (couch or holt) could be assessed for 262 resting sites. 102 resting sites (40%)
301 were situated above ground and 160 below ground. For 43 resting sites a clear classification
302 was not possible. They were omitted from this analysis. The model with the lowest AICc
303 included riparian vegetation width, vegetation period, temperature, distance to nearest path,
304 likelihood of human disturbance throughout the day, and the interaction of vegetation width
305 and likelihood of human disturbance throughout the day (Table 3; for the three models with
306 lowest AICc, see Appendix Table 3). Given the very similar AICc value for the first two
307 models, we also present the results of the model with the second lowest AICc in Appendix
308 Table 4 to illustrate the robustness of the main findings. There was very strong evidence that
309 the likelihood of human disturbance in combination with vegetation width shapes the
310 selection of resting site structures (interaction $p < 0.001$). At sites without daily human
311 disturbance, sites were more likely to occur above ground than below where vegetation was
312 wider (estimate 0.37, $p = 0.001$). However, for human disturbance once a day, no clear
313 preference can be seen (estimate for the regression slope for vegetation width is not directly
314 visible from Table 3; it is the sum of the reference category = 0.37 and the respective
315 interaction -0.31, thus $0.37 - 0.31 = 0.06$). Surprisingly, disturbances every few hours seem
316 to invert this preference, that is, animals then are more likely to sleep below ground with

317increasing vegetation width and above ground at small vegetation width. The opposite is
318indicated for permanent disturbance, where again wider vegetation width correlates with
319more resting sites above ground. Outside of the vegetation period, animals tended to sleep
320below ground more often than during the vegetation period (estimate = -0.86, $p < 0.001$).

321

322*Distribution of resting sites within the home range*

323Resting sites were distributed throughout the territory (Fig. 2). Distances between the resting
324sites varied between a few meters and up to 5000 m. The median showed that half of the
325resting sites were located within a distance of 144 m. 95% of all resting sites were spaced
326within 1755 m.

327

328

329Discussion

330

331Our study illustrates the influence of human presence on resting site selection of a nocturnal
332carnivore in a modified landscape. It also highlights the importance of natural riparian
333vegetation cover as a habitat requirement for resting sites of otters. This is contrary to the
334foraging habitat selection where the species appears to be largely indifferent to the
335naturalness of the watercourses (Weinberger et al., 2016).

336In anthropogenic landscapes, human presence is a driving factor for resting site selection. At
337low levels of daily human presence, riparian vegetation width plays a marginal role. However,
338once humans move around a resting site regularly throughout the day, the animals seem to
339require a wide riparian vegetation strip. This suggests that otters perceive humans as a
340threat. However, resting site selection may not entirely be driven by human disturbance, but
341may also be influenced by fine scale habitat conditions or distances to foraging sites. At the
342same time, resting sites could also be traditional sites: some of the resting sites found could
343have been used by otters since decades as shown in Wales (Chanin, 2013) and thus before
344the increased presence of humans.

345Studies investigating the effect of human presence on habitat selection (Baltrūnaitė et al.,
3462009; Barbosa et al., 2001; Durbin, 1998; Juhász et al., 2013; Weinberger et al., 2016), and
347resting site selection (Beja, 1996; Green et al., 1984; Libois and Rosoux, 1991) of otters
348have led to controversial results. Those studies used different variables to measure human
349disturbance, usually with a proxy: e.g. roads (Durbin, 1998; Weinberger et al., 2016), houses
350(Baltrūnaitė et al., 2009; Juhász et al., 2013), or human and road densities (Barbosa et al.,
3512001). However, the substitution of a variable that is difficult to measure entails the risk that
352the outcome of the analysis does not represent the actual influence of the variable of interest
353. By estimating human disturbance in close proximity to the resting site, we measured its

354immediate impact on the selection of resting sites. Whereas this variable is of limited use for
355large-scale habitat suitability modelling due to the lack of available information on fine scale
356disturbances, the results are highly informative to guide conservation management.

357Otters use resting sites above and below ground. The selection of these sites might be
358driven either by adverse weather conditions or as a protection against disturbances. We
359show that vegetation cover had a stronger effect on resting site type selection than
360temperature, indicating indeed a relationship of the vegetation and its function as a visual
361protection from predators. This is different to other studies that stressed the importance of
362thermal cover characteristics in medium sized mammals (Baghli and Verhagen, 2005;
363Brainerd et al., 1995; Weber, 1989). While holts are preferred resting sites in winter,
364presumably due to a lack of vegetation cover, holts were used also in summer. Especially
365during hot weather thermal insulation might be an important driver. Dense fur can result in
366overheating, because otters dissipate heat only through the small body surface of their feet
367(Kuhn and Meyer, 2009). Within holts the temperature might be more stable and cooler in
368summer than the temperature in couches. Thus, holts can also be important structures
369during peaks of hot weather.

370Altogether, our findings support other studies on different animal species where the riparian
371vegetation is of major importance (Bennett et al., 2014; Matos et al., 2009; Medina Vogel et
372al., 2003; Naiman et al., 1993; Semlitsch and Bodie, 2003; Sepulveda et al., 2007). In areas
373otherwise devoid of natural vegetation, the riparian landscape provides the only remaining
374cover structure for wildlife. Exactly this vegetation belt is disappearing in many areas due to
375intensification in agriculture, flood management, and urbanization (Comiti, 2012). Our results
376stress the need for conservation action to protect riparian vegetation and thus facilitating the
377recovery of this semi-aquatic carnivore. Beside good foraging habitat and an unpolluted
378environment, safe resting sites are crucial requirements for the long-term recovery of otters.
379Especially for reproducing females, resting sites with no disturbance are of high importance
380(Beja, 1996; Durbin, 1996). Information on key habitat features of the focal species are
381therefore important, particularly in the light of limited financial funding for conservation
382measures. Using the information on the number and the spacing of resting sites of otters
383within the watercourses, management plans for otter conservation can be efficiently
384addressed. In riverine landscapes where human pressure is high, we believe that the
385establishment of riparian vegetation refuges with restricted access for humans provides a
386feasible solution. These refuges ideally encompass a vegetation belt of at least 15 m width.
387They should be spaced along any waterbodies, with an ideal interval of 140 m. Such small
388stretches of natural riparian vegetation left exclusively for wildlife along the human-dominated
389watercourses may be necessary for otters to be able to persist in such a landscape.

390By combining resting site selection with the spatial distribution of those sites, a holistic
391approach along the watercourses is feasible. While thus targeting otter conservation, such
392refuges will be beneficial to numerous other species.

393

394

395Acknowledgements

396

397This study was initiated by the foundation Pro Lutra, Switzerland and funded by Zuercher
398Tierschutz, Ernst Goehner Stiftung, Stotzer-Kaestli-Stiftung, Bernd Thies-Stiftung, Autax-
399Stiftung, Stiftung Temperatio, Conseil International de la Chasse CIC, Sektion Schweiz,
400Theo-Wucher Stiftung, Charlotte und Nelly Dornacher Stiftung, Parrotia Stiftung, and an
401anonymous sponsor. Authorization for capture and treatment of otters was given by the
402government of Styria, Austria (Division 10a and 13c). We are grateful for Susana Freire,
403Barbara Schnueriger, André Weller, Susanne Pusch, Gaspar Camlik, Vaslik Beran, Lucas
404Polednik, Ales Toman, Annette Stephani, Iris Hanetseder, Lisa Spuehler, Manuel
405Freiburghaus and Gert Niederkofler for their fieldwork. We thank Addy and Lena de Jongh
406and Tjibbe Jong for capturing, Ronald Schmidt for support in GIS and Alex van Rensburg,
407Benedikt Gehr, Christine Grossen and Yolanda Melero for discussions and inputs. We are
408also thankful to two anonymous reviewers who have helped to substantially improve the
409manuscript.

410

411

412References

413

414Baghli, A., Verhagen, R., 2005. Activity patterns and use of resting sites by polecats in an
415 endangered population. *Mammalia* 69, 211–222. doi:10.1515/mamm.2005.018

416Baltrūnaitė, L., Balčiauskas, L., Matulaitis, R., Stirkė, V., 2009. Otter distribution in Lithuania
417 in 2008 and changes in the last decade. *Est. J. Ecol.* 58, 94–102.

418 doi:10.3176/eco.2009.2.03

419Barbosa, A.M., Real, R., Marquez, A.L., Rendon, M.A., Márquez, A.L., Rendón, M.A., 2001.

420 Spatial, environmental and human influences on the distribution of otter (*Lutra lutra*) in
421 the Spanish provinces. *Divers. Distrib.* 7, 137–144. doi:10.1046/j.1472-

422 4642.2001.00104.x

423Beja, P.R., 1996. Temporal and spatial patterns of rest-site use by four female otters *Lutra*
424 *lutra* along the south-west coast of Portugal. *J. Zool.* 239, 741–753.

425Bennett, A.F., Nimmo, D.G., Radford, J.Q., 2014. Riparian vegetation has disproportionate
426 benefits for landscape-scale conservation of woodland birds in highly modified

427 environments. *J. Appl. Ecol.* 51, 514–523. doi:10.1111/1365-2664.12200

428Blanc, R., Guillemain, M., Mouronval, J.-B., Desmonts, D., Fritz, H., 2006. Effects of non-
429 consumptive leisure disturbance to wildlife. *Rev. d'Ecologie (La Terre la Vie)* 61, 117–
430 133.

431Brainerd, S.M., Helldin, J.O., Lindstrom, E.R., Rolstad, E., Rolstad, J., Storch, I., 1995. Pine
432 marten (*Martes martes*) selection of resting and denning sites in Scandinavian managed
433 forests. *Ann. Zool. Fennici* 32, 151–157.

434Burnham, K.P., Anderson, D.R., 2002. *Model Selection and Multimodel Inference: A Practical*
435 *Information-theoretic Approach*. Springer Verlag, New York.

436Chanin, P., 2013. *Otters*, 2nd Ed. ed. Whittet Books, Stansted.

437Ciuti, S., Northrup, J.M., Muhly, T.B., Simi, S., Musiani, M., Pitt, J.A., Boyce, M.S., 2012.
438 Effects of humans on behaviour of wildlife exceed those of natural predators in a
439 landscape of fear. *PLoS One* 7. doi:10.1371/journal.pone.0050611

440Coetzee, B.W.T., Chown, S.L., 2015. A meta-analysis of human disturbance impacts on
441 Antarctic wildlife. *Biol. Rev.* doi:10.1111/brv.12184

442Comiti, F., 2012. How natural are Alpine mountain rivers? Evidence from the Italian Alps.
443 *Earth Surf. Process. Landforms* 37, 693–707. doi:10.1002/esp.2267

444Dauverine, L., Chasserieu, C., 2012. *La Loutre d'Europe et les cours d'eau de Haute-*
445 *Savoie*. Asters, Pringy (France)

446Durbin, L.S., 1998. Habitat selection by five otters *Lutra lutra* in rivers of northern Scotland. *J.*
447 *Zool.* 245, 85–92. doi:10.1111/j.1469-7998.1998.tb00075.x

448Durbin, L.S., 1996. Some changes in the habitat use of a free-ranging female otter *Lutra lutra*
449 during breeding. *J. Zool. London* 240, 761–810.

450ESRI, 2011. *ArcGIS Desktop: Release 10*.

451Ewald, K.C., Klaus, G., 2009. *Die ausgewechselte Landschaft: Vom Umgang der Schweiz*
452 *mit ihrer wichtigsten natürlichen Ressource*. Haupt Verlag, Bern.

453Foster-Turley, P., Macdonald, S., Mason, C., 1990. *Otters: an action plan for their*
454 *conservation*. IUCN.

455Green, J., Green, R., Jefferies, D.J., 1984. A radio-tracking survey of otters *Lutra lutra* on a
456 Perthshire river system. *Lutra* 27, 85–145.

457Gregory, S. V., Swanson, F.J., Mckee, W.A., Kenneth, W., Swanson, J., Cummins, K.W.,
458 1991. An ecosystem perspective of riparian zones - Focus on links between land and
459 water. *Bioscience* 41, 540–551. doi:10.2307/1311607

460Janssens, X., Defourny, P., de Kermabon, J., Baret, P.V., 2006. The recovery of the otter in
461 the Cevennes (France): a GIS-based model. *Hystrix* 17, 5–14.

462Juhász, K., Lukács, B.A., Perpék, M., Nagy, S.A., Végvári, Z., 2013. Effects of extensive
463 fishpond management and human disturbance factors on Eurasian otter (*Lutra lutra* L.
464 1758) populations in Eastern Europe. *North. West. J. Zool.* 9, 227–238.

465 Kienast, F., Degenhardt, B., Weilenmann, B., Wäger, Y., Buchecker, M., 2012. GIS-assisted
466 mapping of landscape suitability for nearby recreation. *Landsc. Urban Plan.* 105, 385–
467 399. doi:10.1016/j.landurbplan.2012.01.015

468 Kranz, A., Poledník, L., 2015. Fischotter in Kärnten: Verbreitung & Bestand 2014. Endbericht
469 im Auftrag des Amtes der Kärntner Landesregierung

470 Kranz, A., Poledník, L., 2012. Fischotter Verbreitung und Erhaltungszustand 2011 im
471 Bundesland Steiermark. Endbericht im Auftrag der Fachabteilungen 10A und 13C des
472 Amtes der Steiermärkischen Landesregierung

473 Kruuk, H., 2006. *Otters: Ecology, behaviour and conservation.* Oxford UK.

474 Kruuk, H., 1995. *Wild otters: predation and populations.* Oxford UK.

475 Kuhn, R.A., Meyer, W., 2009. Infrared thermography of the body surface in the Eurasian otter
476 *Lutra lutra* and the giant otter *Pteronura brasiliensis*. *Aquat. Biol.* 6, 143–152.
477 doi:10.3354/ab00176

478 Libois, R.M., Rosoux, R., 1991. Ecology of the otter (*Lutra lutra*) in the Marais Poitevin
479 region. II. General idea of the alimentary regime. *Mammalia* 55, 35–47.

480 Llana, L., García, E.J., Palacios, V., Sazatornil, V., López-Bao, J.V., 2016. Resting in risky
481 environments: the importance of cover for wolves to cope with exposure risk in human-
482 dominated landscapes. *Biodivers. Conserv.* 1–14. doi:10.1007/s10531-016-1134-6

483 Loy, A., Carranza, M., Cianfrani, C., D'Alessandro, E., Bonesi, L., Di Marzio, P., Minotti, M.,
484 Reggiani, G., 2009. Otter *Lutra lutra* population expansion: Assessing habitat suitability
485 and connectivity in southern Italy. *Folia Zool.* 58, 309–326.

486 Lutermann, H., Verburt, L., Rendigs, A., 2010. Resting and nesting in a small mammal:
487 Sleeping sites as a limiting resource for female grey mouse lemurs. *Anim. Behav.* 79,
488 1211–1219. doi:10.1016/j.anbehav.2010.02.017

489 Madsen, A.B., Prang, A., 2001. Habitat factors and the presence or absence of otters *Lutra*
490 *lutra* in Denmark. *Acta Theriol. (Warsz.)* 46, 171–179.

491 Manly, B.F.J., McDonald, L.L., Thomas, D.L., McDonald, T.L., Erickson, W.P., 2002.
492 *Resource Selection by Animals*, 2nd Editio. ed. Kluwer Academic Publishers, Dordrecht,
493 Netherlands.

494 Manning, A.D., Gibbons, P., Fischer, J., Oliver, D.L., Lindenmayer, D.B., 2013. Hollow
495 futures? Tree decline, lag effects and hollow-dependent species. *Anim. Conserv.* 16,
496 395–403. doi:10.1111/acv.12006

497 Marcelli, M., Poledník, L., Poledníková, K., Fusillo, R., 2012. Land use drivers of species re-
498 expansion: inferring colonization dynamics in Eurasian otters. *Divers. Distrib.* 18, 1001–
499 1012. doi:10.1111/j.1472-4642.2012.00898.x

500 Martín, J., López, P., 1999. When to come out from a refuge: risk-sensitive and state-
501 dependent decisions in an alpine lizard. *Behav. Ecol.* 10, 487–492.

502 Matos, H., Santos, M., Palomares, F., Santos-Reis, M., 2009. Does riparian habitat condition

503 influence mammalian carnivore abundance in Mediterranean ecosystems? *Biodivers.*
504 *Conserv.* 18, 373–386.

505McCormick, A., Fisher, K., Brierley, G., 2015. Quantitative assessment of the relationships
506 among ecological, morphological and aesthetic values in a river rehabilitation initiative.
507 *J. Environ. Manage.* 153, 60–67. doi:10.1016/j.jenvman.2014.11.025

508Medina Vogel, G., Kaufman, V.S., Monsalve, R., Gomez, V., 2003. The influence of riparian
509 vegetation, woody debris, stream morphology and human activity on the use of rivers by
510 southern river otters in *Lontra provocax* in Chile. *Oryx* 37, 422–430.

511Murphy, G.E.P., Romanuk, T.N., 2014. A meta-analysis of declines in local species richness
512 from human disturbances. *Ecol. Evol.* 4, 91–103. doi:10.1002/ece3.909

513Naiman, R., Decamps, H., Pollock, M., 1993. The role of riparian corridors in maintaining
514 regional biodiversity. *Ecol. Appl.* 3, 209–212.

515Ó Néill, L., de Jongh, A., Ozoliņš, J., Jong, T. De, Rochford, J., 2007. Minimizing Leg-Hold
516 Trapping Trauma for Otters With Mobile Phone Technology. *J. Wildl. Manage.* 71,
517 2776–2780. doi:10.2193/2006-482

518Oriol-Cotterill, A., Valeix, M., Frank, L.G., Riginos, C., Macdonald, D.W., 2015. Landscapes
519 of coexistence for terrestrial carnivores: the ecological consequences of being
520 downgraded from ultimate to penultimate predator by humans. *Oikos* 124, 1263–1273.
521 doi:10.1111/oik.02224

522Pavanello, M., Lapini, L., Kranz, A., Iordan, F., 2015. Rediscovering the Eurasian Otter (*Lutra*
523 *Lutra* L.) in Friuli Venezia Giulia and notes on its possible expansion in northern Italy.
524 *IUCN Otter Spec. Gr. Bull.* 32, 12–20.

525Prigioni, C., Balestrieri, A., Remonti, L., 2007. Decline and recovery in otter *Lutra lutra*
526 populations in Italy. *Mamm. Rev.* 37, 71–79. doi:10.1111/j.1365-2907.2007.00105.x

527Ruiz-Olmo, J., Margalida, A., Batet, A., 2005. Use of small rich patches by Eurasian otter
528 (*Lutra lutra* L.) females and cubs during the pre-dispersal period. *J. Zool.* 265, 339–346.
529 doi:10.1017/S0952836905006424

530Santos, M.J., Matos, H.M., Palomares, F., Santos-Reis, M., 2011. Factors affecting
531 mammalian carnivore use of riparian ecosystems in Mediterranean climates. *J.*
532 *Mammal.* 92, 1060–1069. doi:10.1644/10-MAMM-A-009.1

533Semeniuk, C.A.D., Dill, L.M., 2005. Cost/benefit analysis of group and solitary resting in the
534 cowtail stingray, *Pastinachus sephen*. *Behav. Ecol.* 16, 417–426.
535 doi:10.1093/beheco/ari005

536Semlitsch, R.D., Bodie, J.R., 2003. Biological Criteria for Buffer Zones around Wetlands and
537 Riparian Habitats for Amphibians and Reptiles. *Conserv. Biol.* 17, 1219–1228.

538Sepulveda, M.A., Bartheld, J.L., Monsalve, R., Gomez, V., Medina-Vogel, G., 2007. Habitat
539 use and spatial behaviour of the endangered Southern river otter (*Lontra provocax*) in
540 riparian habitats of Chile: Conservation implications. *Biol. Conserv.* 140, 329–338.

541 Slauson, K.M., Zielinski, W.J., 2009. Characteristics of summer and fall diurnal resting
542 habitat used by American Martens in coastal northwestern California. *Northwest Sci.* 83,
543 35–45. doi:10.3955/046.083.0104

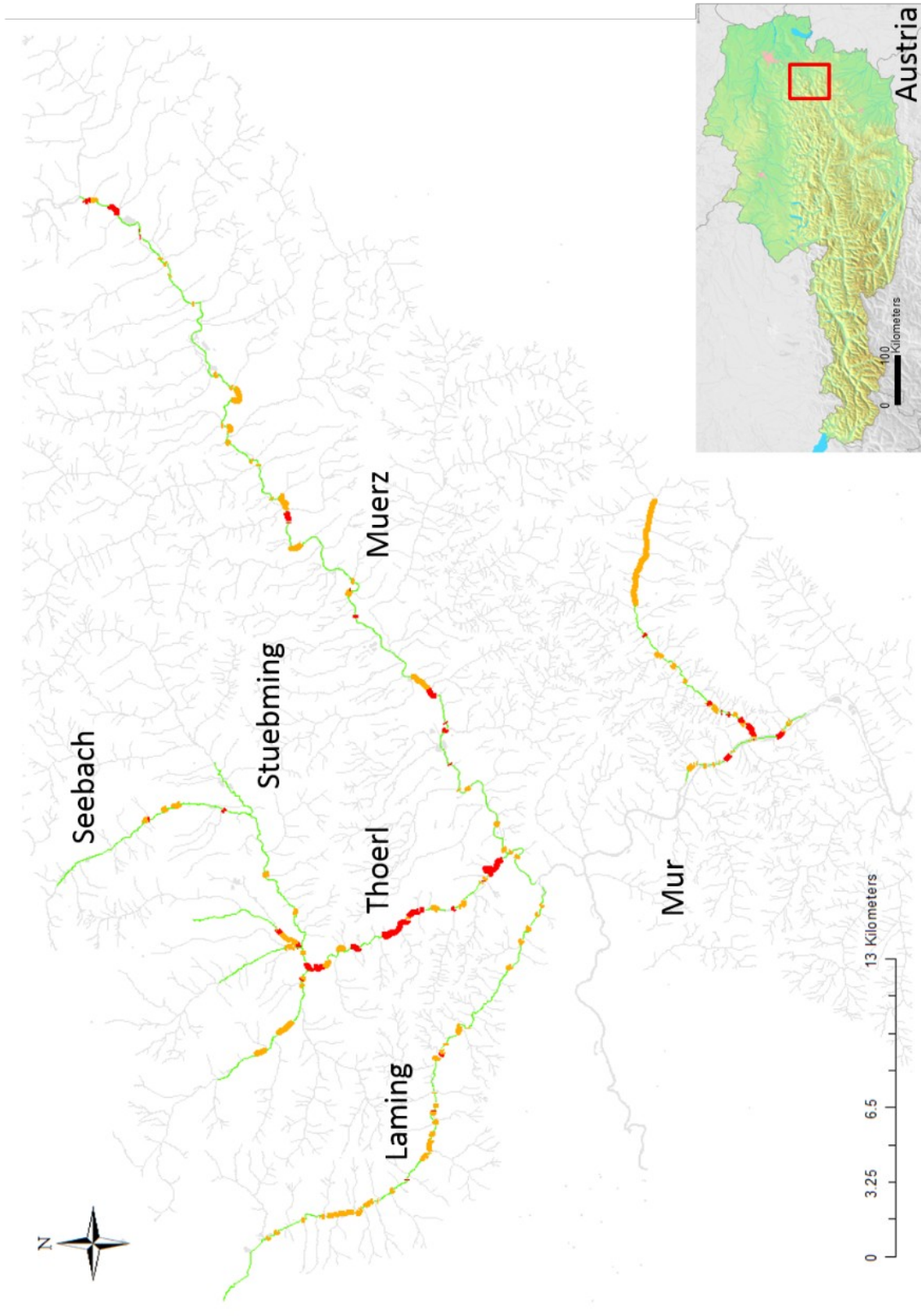
544 Weber, D., 1989. The ecological significance of resting sites and the seasonal habitat
545 change in polecats (*Mustela putorius*). *J. Zool. London* 217, 629–638.

546 Weinberger, I., 2017. Zweites Fischottermonitoring in der Schweiz 2016: Brückenmonitoring
547 an Aare, Doubs, Emme, Inn, Rhein, Rhone, Saane und Ticino. Stiftung Pro Lutra,
548 Switzerland

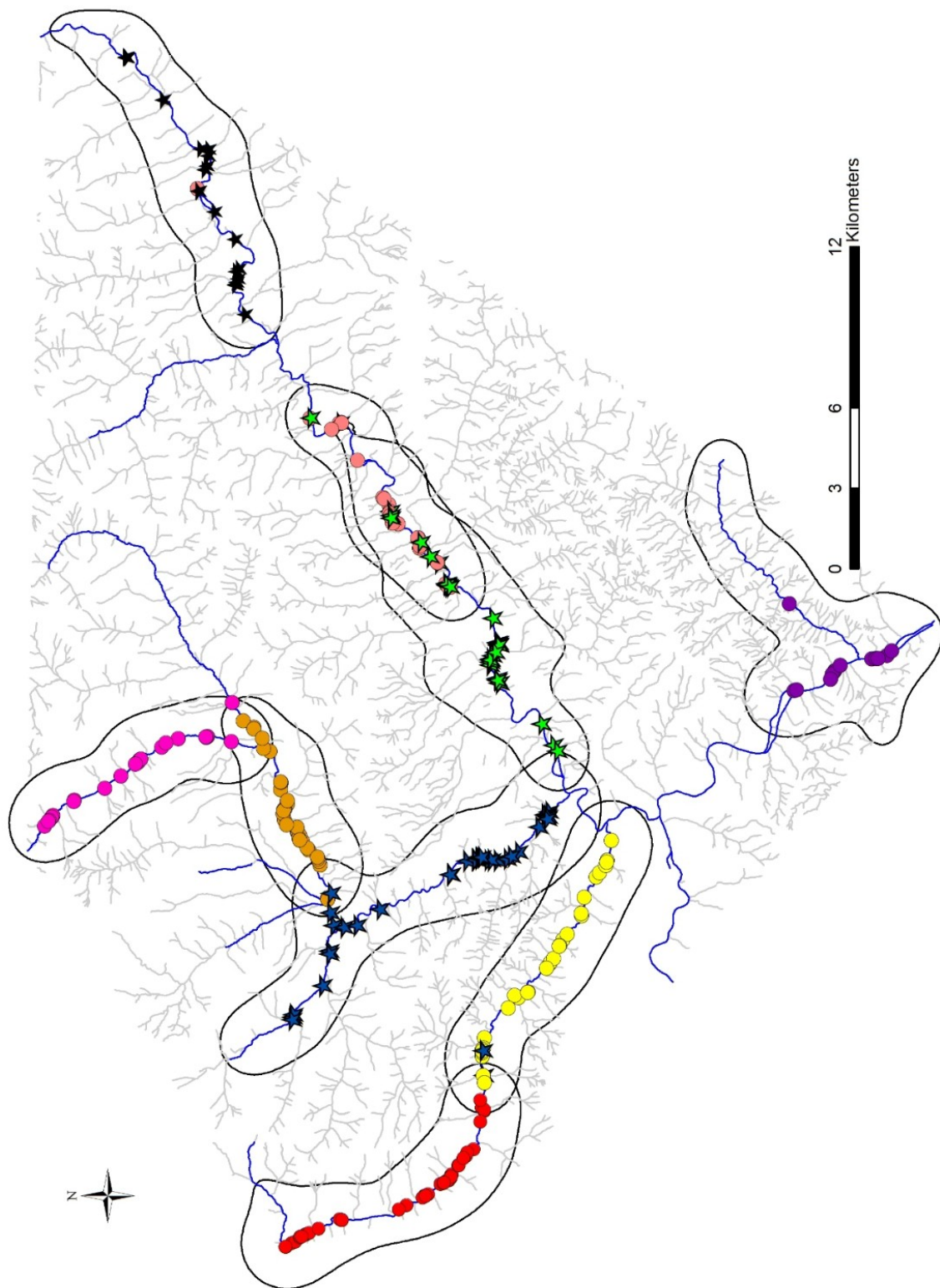
549 Weinberger, I.C., Muff, S., de Jongh, A., Kranz, A., Bontadina, F., 2016. Flexible habitat
550 selection paves the way for a recovery of otter populations in the European Alps. *Biol.*
551 *Conserv.* 199, 88–95. doi:10.1016/j.biocon.2016.04.017

552

553



554 Figure 1. Study area in the eastern Central Alps in Styria, Austria, defined by the minimum
 555 convex polygon for all otters, showing the running waters (with names of main streams).
 556 Vegetation type of all main riverbeds within any home ranges was assessed: green = natural
 557 (vegetation), orange = modified (vegetation) and red = artificial (no vegetation).



560 Figure 2. Distribution of resting sites for all radio tracked otters (colours indicate individuals,
 561 circles indicate resting sites of the females, stars indicate the resting sites of the males)
 562 within their respective home range using fixed kernel estimator at 95%, shown as black lines.
 563 Blue lines indicate the main streams in the valleys, while grey lines indicate the tributaries.

565 Table 1. Day resting sites: Overview of the environmental variables used in the analyses.
 566 Variables included in the different analyses are indicated with A) selection of resting sites,
 567 and B) selection of the type of resting sites.

Variables	Description	Measurement	Analyses
Resting site type	Couch: resting site above ground (e.g. Stick pile, Vegetation); Holt: resting site below ground (e.g. boulder, root system)	Categorical	B
Habitat type	Four categories within the watercourse: a) Main riverbed b) Abstracted water (Water derived from the dam reservoir to the hydroelectric power station (head water) and from there (tail water) back to the main riverbed c) Standing water such as ponds	Categorical	A, B
Vegetation width	Width of natural or semi-natural vegetation measured from waterside	Continuous	A, B
Vegetation type	Naturalness of the type of riparian vegetation: natural (forest, reed, herbaceous stretches with at least 1 tree/bush within 25m), modified (herbaceous, meadow, grass) and no vegetation)	Ordinal (1-3, with 1 = natural, 2 = foreign and 3 = no vegetation)	A, B
Vegetation period	Onset and end of the vegetation period	Categorical (0 = outside, 1 = during vegetation period)	B
Temperature	Mean daily temperature from nearest weather station (five stations over the whole area)	Continuous	B
Snow cover	Daily snow cover, data from the nearest weather station (five stations over the area)	Continuous	B
Distance to path	Path or roadlike structure (from hiking path to highway)	Meters	A, B
Likelihood of human disturbance throughout the year	General human presence over the year	Ordinal (1-3, with 1 = none, 2 = occasionally and 3 = daily)	A, B
Likelihood of human disturbance throughout the day	Human disturbance throughout the day	Ordinal (1-4, with 1 = none, 2 = once a day, 3 = every few hours, 4 = permanent or min. 1 every 2 hours)	A, B
Predictability of the daily disturbance	Type and intensity of disturbance	Ordinal (1-4, with 1 = none, 2 = working, 3 = spare time and 4 = spare time with dogs)	A, B

568
 569

570 Table 2. Summary of the model used for selection of resting sites at the local scale.

571 Variables in italics indicate categorical variables, where the respective p values belong to the
 572 χ^2 test of an overall influence of the variable. The p values in the last column can be used to
 573 test for the differences between the indicated category and the reference category.

574

575

Variables	Estimate	Std. Error	z-value	Pr(> z)
<i>HABITAT TYPE</i> ($p = 0.05$)				
<i>(Reference category: "Main riverbed")</i>				
Abstracted water	1.48	0.86	1.72	0.09
Standing water	0.25	0.40	0.62	0.54
Vegetation width	-0.74	0.15	-5.02	<0.001
<i>Vegetation type</i> ($p < 0.001$)				
<i>(Reference category is "Natural")</i>				
Modified	-2.29	0.47	-4.83	<0.001
No vegetation	-1.60	0.57	-2.83	0.005
Distance to path	0.39	0.20	1.97	0.05
Likelihood of human disturbance throughout the day ($p = 0.01$)				
<i>(Reference category: "None")</i>				
Once a day	0.38	0.49	0.84	0.40
Every few hours	-0.48	0.52	-0.92	0.36
Permanent	-0.60	0.62	-0.98	0.33

Predictability of the daily disturbance

(

(

—

—

—

—

—

—

—

—

—

—

—

—

—

—

—

—

—

—

—

—

—

—

—

—

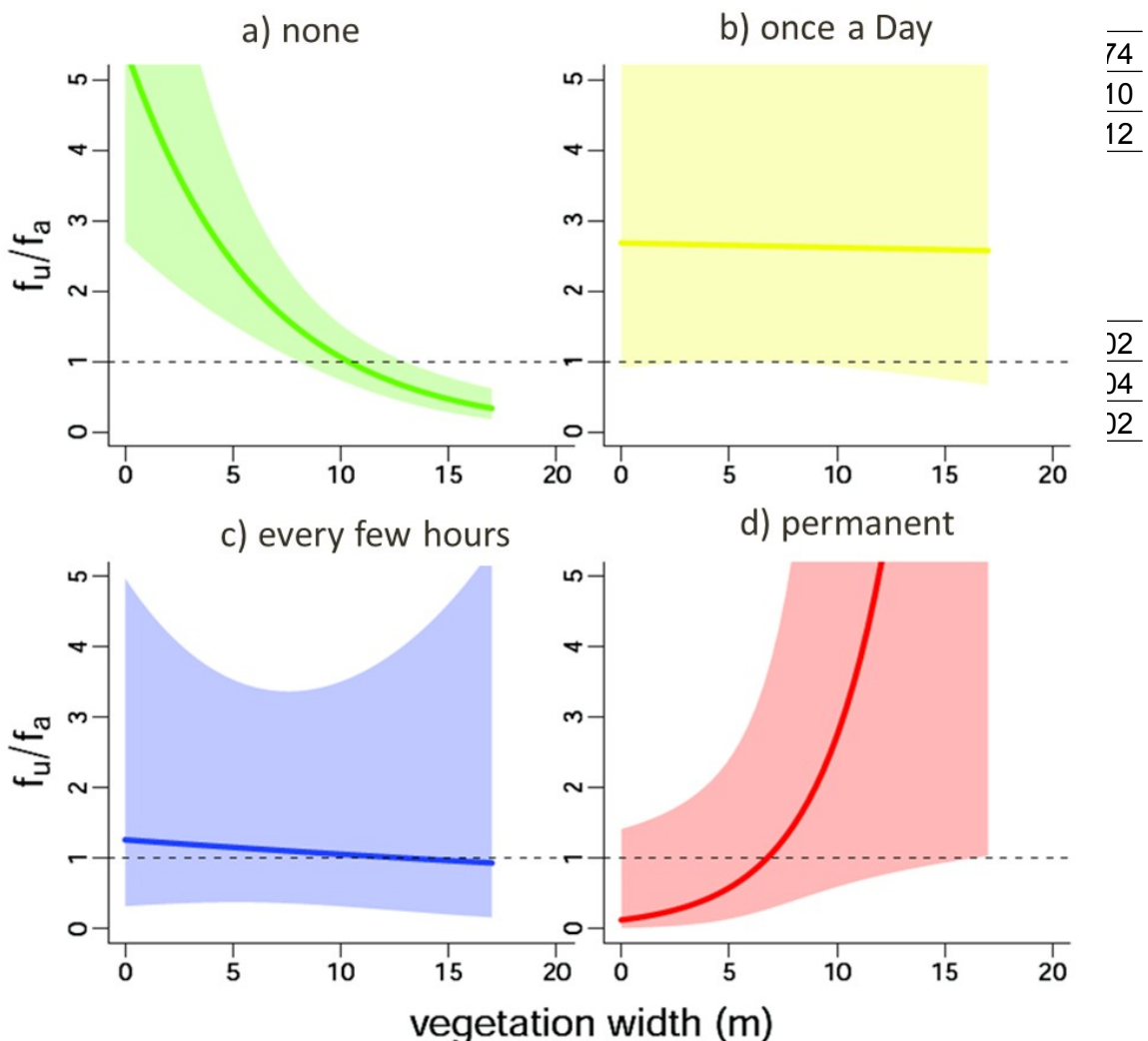
—

—

—

—

—



576

577

578

74

10

12

12

14

12

579 Figure 3. The influence of vegetation width at resting site locations depending on the
580 likelihood of daily human disturbance in natural riparian vegetation: increasing daily
581 disturbance (a to d). The plots show the regression lines and the 95% confidence bands.
582

583 Table 3. Summary of the model used for the analysis on resting site type, with resting site
 584 type as the response variable (0 = below ground, 1 = above ground resting sites). Variables
 585 in italics indicate categorical variables, where the respective p values belong to the χ^2 test
 586 of an overall influence of the variable. The p values in the last column can be used to test for
 587 differences between the indicated and the reference category of the variable.

588

Variables	Estimate	Std. Error	z value	Pr(> z)
Vegetation width	0.37	0.12	3.10	0.001
<i>Vegetation period</i> (Reference category: "During vegetation period")				
Outside vegetation period (p)	-0.86	0.20	-4.30	<0.001
Temperature	-0.19	0.10	-1.89	0.06
Distance to path	0.57	0.07	8.13	<0.001
Likelihood of human disturbance throughout the day ($p < 0.001$) (Reference category: "None")				
Once a day	0.002	0.14	0.01	0.99
Every few hours	-2.51	0.74	-3.41	<0.001
Permanent	0.21	0.62	0.34	0.74
<i>Interaction vegetation width: Likelihood of human disturbance throughout the day ($p < 0.001$)</i> (Reference category: "Vegetation width:none")				
Vegetation width:once a day	-0.31	0.14	-2.26	0.02
Vegetation width:every few hours	-3.08	0.78	-3.94	<0.001
Vegetation width:permanent	1.37	0.76	1.81	0.07

589

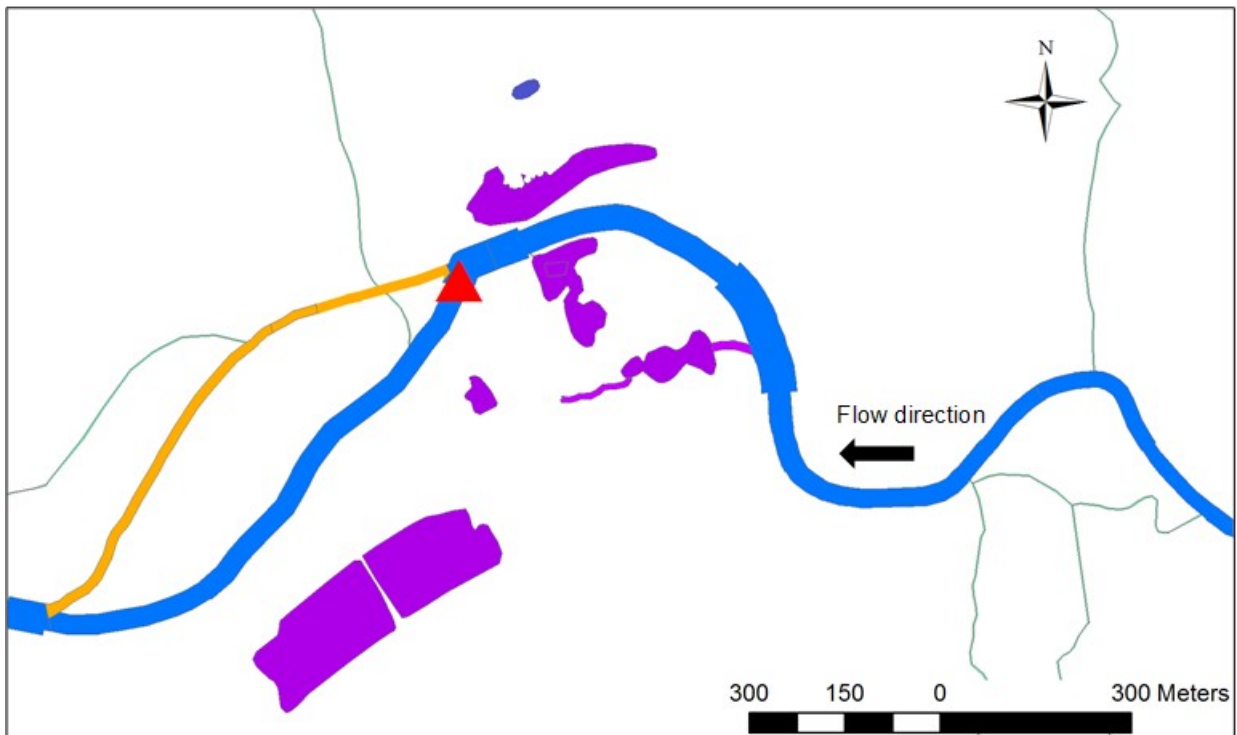
590

591 **Appendix:**

592 Riparian vegetation provides crucial shelter for resting otters in a human-dominated
593 landscape

594

595



597 Appendix Figure 1. Classification of the main water bodies. Blue= main riverbed, orange =
598 abstracted water, grey= tributaries, and lilac=standing water. The red triangle signifies the
599 weir where the abstracted water is deviated from the main riverbed
600

601
602



603Appendix Figure 2. The three different categories of naturalness of the riparian vegetation.
604Left: “natural” (trees, bushes, reed or herbaceous stretches with at least a bush or tree within
60525m along the bank side). Middle: “modified” (stretch with grass or herbaceous plants with
606no trees or bushes within 25m). Right: “artificial” (no vegetation)

607

608 Appendix Table 1. Information on number of tracked animals and resting site (RS) over the tracking period. For 20 resting sites, not enough data
 609 could be collected, resulting in 285 unique resting sites. Nine resting sites were used by two individuals and were treated independently for each
 610 individual for further analyses.

611

612

Animal	Sex	Age at Capture	Start Tracking	End Tracking	Successful RS locations	Mean RS locations/week	Total RS (data deficient / shared)	RS analysed (unique RS)
Alena	F	Sub-adult	08/05/2010	05/03/2013	399	3.08	54 (3/0)	51
Baukje	F	Adult	07/11/2010	05/03/2013	279	2.58	36 (2/1)	34
Cleo	F	Sub-adult	10/11/2010	15/06/2012	195	2.58	44 (3/0)	41
Dan	M	Adult	10/11/2010	07/03/2013	233	2.27	44 (2/1)	42
Fee	F	Sub-adult	03/05/2011	21/03/2013	189	2.20	26 (2/0)	24
Gessa	F	Adult	03/05/2011	18/03/2013	181	2.27	33 (2/2)	31
Hans	M	Adult	07/05/2011	09/03/2013	185	2.29	36 (1/5)	35
Ivo	M	Adult	14/04/2012	21/02/2013	88	2.33	27 (4/0)	23
Johanna	F	Adult	14/04/2012	29/11/2012	65	2.14	14 (1/0)	13
Total					1814	2.41	314 (20/9)	294 (285)

613 Appendix Table 2. Lowest AICc models for fine scale resting site selection according to the
 614 corrected Akaike's Information Criterion (AICc). K is the number of estimated parameters for
 615 each model. The ranking of the models is based on differences in AICc (Delta AICc (wi)).

616

Models	AICc (K)	Delta AICc (wi)
Habitat type + Vegetation width + Vegetation type + Distance to path + Likelihood of human disturbance throughout the day + Type of daily disturbance + Vegetation width : Likelihood of human disturbance throughout the day	698.40 (17)	0 (0.59)
Vegetation width + Vegetation type + Distance to path + Likelihood of human disturbance throughout the day + Type of daily disturbance + Vegetation width : Likelihood of human disturbance throughout the day	700.22 (15)	1.83 (0.24)
Habitat type + Vegetation width + Vegetation type + Distance to path+ Likelihood of human disturbance throughout the day + Type of daily disturbance + Vegetation width : Likelihood of human disturbance throughout the day + Vegetation width : Type of daily disturbance	701.05 (20)	2.6 (0.15)

617

618 Appendix Table 3. Lowest AICc models for resting site selection above or below ground
 619 according to the corrected Akaike's Information Criterion (AICc). K is the number of
 620 estimated parameters for each model. The ranking of the models is based on differences in
 621 AICc (Delta AICc).

622

Models	AIC c (K)	AICc (wi)
Vegetation width + Vegetation period + Temperature + Distance to path + Human disturbance throughout the day + Vegetation width : Human disturbance throughout the day	1908.101 (12)	0.00 (0.50)
Vegetation width + Vegetation period + Temperature + Distance to path + Human disturbance throughout the day + Human disturbance throughout the year + Vegetation width : Human disturbance throughout the day	1908.112 (14)	0.012 (0.49)
Vegetation width + Vegetation period + Temperature + Distance to path + Type of daily disturbance+ Vegetation width : Type of daily disturbance + Vegetation width : Vegetation period	1919.186 (13)	11.09 (0.01)

623

624

625

626Appendix Table 4. Summary of the model with second largest AICc weight (given as 0.49),
 627with resting site type as the response variable (0= below ground, 1=above ground resting
 628sites).

629

Variables	Estimate	Std. Error	z value	Pr(> z)
Vegetation width	0.37	0.12	3.10	0.001
Vegetation period (Reference category: "During vegetation period")				
Outside vegetation period	-0.86	0.20	-4.29	< 0.001
Temperature	-0.20	0.10	-1.98	0.05
Distance to path	0.56	0.07	7.84	<0.001
Human disturbance throughout the day ($p < 0.001$) (Reference category: "None")				
Once a day	0.07	0.15	0.43	0.67
Every few hours	-2.22	0.76	-2.93	0.003
Permanent	0.65	0.64	0.32	0.65
Human disturbance throughout the year ($p = 0.13$) (Reference category: "None")				0.16
Occasional ($p =$)	-0.26	0.19	-1.39	
Permanent (p)	-1.43	0.90	-1.61	0.11
Interaction Vegetation width: Human disturbance throughout the day ($p < 0.001$) (Reference category: "Vegetation width:none")				
Vegetation width:once a day	-0.32	0.14	-2.31	0.02
Vegetation width:every few hours	-3.06	0.78	-3.94	<0.001
Vegetation width:permanent	1.18	0.73	1.62	0.11

630

631