

Pharmacokinetics and -dynamics of intramuscular and intranasal naloxone: An explorative study in healthy volunteers

Authors

Arne Kristian Skulberg^{1,2}, Ida Tylleskar¹, Turid Nilsen¹, Sissel Skarra¹, Øyvind Salvesen³, Trond Sand^{4,6}, Thorsteinn Loftsson⁵, Ola Dale*^{1,7}

¹ Department of Circulation and Medical Imaging, Faculty of Medicine and Health Sciences, NTNU-Norwegian University of Science and Technology, Trondheim, Norway

² Department of Anaesthesiology and Critical Care, Oslo University Hospital, Oslo, Norway

³Department of Public Health and Nursing, Faculty of Medicine and Health Sciences, NTNU-Norwegian University of Science and Technology, Trondheim, Norway

⁴Department of Neuromedicine and Movement Science, Faculty of Medicine and Health Sciences, NTNU-Norwegian University of Science and Technology, Trondheim, Norway

⁵ Department of Pharmaceutical Sciences, University of Iceland, Reykjavik, Iceland

⁶ Department of Neurology and Clinical Neurophysiology, St. Olavs Hospital, Trondheim University Hospital, Trondheim, Norway

⁷ Department of Research, St. Olavs Hospital, Trondheim University Hospital, Trondheim, Norway

*Corresponding author

NTNU, Department of Circulation and Medical Imaging,

Post-box 8905, 7491 Trondheim, Norway

Email: ola.dale@ntnu.no

Phone: (+47) 72826401

Fax: (+47) 73 59 53 10

ORCID of the authors

AKS: 0000-0002-1735-4820

IT: 0000-0002-3220-1961

TS 0000-0002-9755-8187

TL: 0000-0002-9439-1553

OD: 0000-0001-9493-2658

Number references: 46

Number figures/ tables: 6

Word count excluding abstract, references, tables and figures: 4347

Key Words:

Naloxone, Intranasal, Pharmacodynamics, Pharmacokinetics, Drug Overdose, Remifentanyl,

Acknowledgements

The Clinical Research Facility, St. Olavs Hospital, Trondheim University Hospital, conducted the study and the Unit for Applied Clinical Research, NTNU for assisted with GCP monitoring and provided the internet based randomization. The naloxone analysis were provided by the *Proteomics and Metabolomics Core Facility, PROMEC*, NTNU. These infrastructures are all funded by the Faculty of Medicine, NTNU and the Central Norway Regional Health Authority. This study was supported by grants from the Liaison Committee for Education, Research and Innovation in Central Norway and the Joint Research Committee between St. Olavs Hospital, Trondheim University Hospital and the Faculty of Medicine and Health Sciences, NTNU, Norway. Anders Åsberg, School of Pharmacy, University of Oslo, has given teaching on pharmacokinetics.

Abstract

Purpose: This study aimed to develop a model for pharmacodynamic and pharmacokinetic studies of naloxone antagonism under steady state opioid agonism, and to compare a high concentration/ low volume intranasal naloxone formulation 8 mg/ml to intramuscular 0.8 mg.

Methods: Two way cross over in 12 healthy volunteers receiving naloxone while receiving remifentanyl by a target controlled infusion for 102 minutes. The group were subdivided into three different doses remifentanyl. Blood samples for serum naloxone concentrations, pupillometry and heat pain threshold were measured.

Results: The relative bioavailability of intranasal to intramuscular naloxone was 0.75. Pupillometry showed difference in antagonism, the effect is significant in the data set as a whole ($p < 0.001$) and in all three subgroups ($p < 0.02$ – $p < 0.001$). Heat Pain Threshold show no statistical difference.

Conclusions: A target controlled infusion of remifentanyl provides good conditions for studying the pharmacodynamics of naloxone, and pupillometry was a better modality than heat pain threshold. Intranasal naloxone 0.8 mg is inferior for a similar dose intramuscular. Our design may help to bridge the gap between studies in healthy volunteers and the patient population in need of naloxone for opioid overdose.

Introduction

Worldwide approximately 100,000 people die annually from opioid overdoses, and this figure is increasing, particularly in the US[1,2]. Opioid intoxication is recognised by miosis, respiratory depression and reduced consciousness. Naloxone has a key role in emergency treatment of respiratory arrest caused by opioid intoxication. It is a drug with an excellent safety profile, and it has little pharmacological effects in the absence of opioids. However, in the opioid dependent patient it may precipitate acute withdrawal symptoms[3].

The provision of naloxone to people likely to witness an opioid overdose is a recommendation from the WHO[4]. Naloxone has been available since 1971, and many stakeholders have advocated the development of novel and user-friendly naloxone formulations. Nasal naloxone has long been used in various off-label formulations, but the use has been criticized on scientific, regulatory and legal basis [5,6].

Despite the widespread use of nasal naloxone there has been an absence of pharmacologic studies. Bioavailability as low as 0.04 has been reported[7]. Regardless, clinical studies comparing intranasal (IN) to intramuscular (IM) naloxone have been promising[8]. IN drugs require high concentrations and low volumes to allow systemic uptake with a maximum volume of <0.15 mL/ nostril[9,10]. This is particularly important for naloxone, which has a high first-pass liver metabolism[11]. The IN formulation approved in 2015 by the US Food and Drug Administration has a relative bioavailability compared to IM of 0.47 (4 mg dose) and 0.44 (2 x 4mg dose)[12]. An absolute bioavailability of 0.54 was recently reported for the IN formulation used in the present study[13].

Various models to study pharmacodynamic effects of opioids exist. Commonly opioid agonism such as pain relief, pupil size changes or drug-liking has been reported [14-16]. The study of the reversal, antagonism, of these effects are rarer. Alfentanil, tramadol or hydromorphone per oral administration combined with naloxone [17,18] have been suggested, but neither of these models creates a steady and reproducible state of opioid agonism. Shram et al used remifentanil bolus and pupillometry to demonstrate the effects of the μ - opioid receptor antagonist samidorphan[19]. Pupillometry is an easy and non-invasive measurement, and is often used to study the pharmacodynamic effects of opioids[20-23]. Pupil size is also validated as diagnostic criterion in pre- hospital overdoses[24]. Heat pain threshold (HPT) has also been shown to increase with remifentanil infusions in healthy subjects[25,26].

In the present study remifentanil was administered as a target controlled infusion (TCI) [27,28] to achieve steady state opioid agonism. The computerised infusion system delivered remifentanil to rapidly achieve a set plasma concentration using a multi-compartment pharmacokinetic model. To measure the effects of the drugs administered, pupillary size and heat pain threshold were assessed before, during and after naloxone administration. The aim of the study was to establish a model for studying the pharmacodynamics of naloxone, and to compare intramuscular and intranasal administration of naloxone under steady state opioid agonism in human volunteers. It also aimed to investigate whether pupillometry or HPT were best suited to describe the

pharmacodynamics of opioid reversal by naloxone.

Methods

Ethics

This study was conducted according to the Declaration of Helsinki and The International Conference on Harmonisation and Good Clinical Practice. It was approved by The Regional Committees of Medical and Health Research Ethics (2014/740) and the Norwegian Medicines Agency (EudraCT 2014-001465-27) and registered in clinicaltrials.gov (NCT02307721) before the start of the trial. Informed written consent was obtained from all prior to inclusion. Participants were insured through the Drug Liability Association, Norway and compensated for each treatment visit with 1500 NOK (160 Euro/ 175 USD).

Subjects

Healthy men and women aged 18-40 years were eligible to participate. "Healthy" was defined as American Society of Anesthesiologists class I[29]. A full medical history and targeted examination including 12 lead electrocardiogram without pathologic abnormalities and blood samples within normal reference values for haemoglobin, creatinine, ASAT, ALAT and gamma GT were required. Women had to use safe contraception throughout the study period and have a serum HCG below 3 IU/L at inclusion. Breast feeding women were excluded. Participants taking any medications including herbal products, with any known drug allergies, having any local nasal disease or nasal surgery for the last 2 months or a cold for the last week were excluded. Participants with a history of contact with police or authorities in relation to alcohol or drug offences, a history of prolonged use of opioid analgesics, who had access to remifentanyl or other potent opioids in their daily workplace or who had a history of drug and/or alcohol abuse were excluded. Potential participants had to answer the CAGE-AID questionnaire [30], anyone answering yes to two or more questions were not allowed to participate.

Nineteen subjects were screened for inclusion, five did not meet the criteria. Fourteen subjects were included. One subject withdrew consent and one started medication that lead to exclusion, both prior to randomization. Twelve participants were randomized and completed the study. Six men and six women, mean age 23.8 (22.6-25) years. Mean height 175.3 cm (168.6- 182.0), mean weight 68.9 kg (61.3- 76.5) and mean BMI 22.3 kg/m².

Design

This was a phase 1, open, randomized, two-way, crossover, pharmacokinetic and pharmacodynamic study in

human volunteers. Participants were exposed to remifentanyl and naloxone twice. Each study session lasted 7 hours, the sessions were separated by at least a 72 hours wash-out period. The order of treatments was decided by concealed randomization by an internet based service that conducted block randomization without stratification. A formal sample size calculation was not performed. Twelve subjects are commonly used in phase 1 studies, as it usually provides adequate data for estimates of inter-individual variations of the pharmacokinetics of the study drug. The study was conducted at the Clinical Research Facility, St. Olavs Hospital, Trondheim, Norway, from December 2014 to April 2015.

Please insert figure 1 here

The primary endpoint in this study was comparison of the pharmacodynamic profile of IN and IM naloxone by pupillometry and heat pain threshold. Secondary endpoints included the pharmacokinetic profile of IN and IM under opioid influence (bioavailability, C_{max} and T_{max}) and safety of formulation.

Naloxone were administered as 0.8 mg IM or 0.8 mg IN. Naloxone B. Braun 0.4 mg/ml (Braun, Melsungen, Germany) IM was supplied by the St. Olav Hospital Pharmacy and administered as 2.0 ml in the deltoid muscle. The nasal formulation contained naloxone hydrochloride 8 mg/ml and was produced by the Department of Biopharmaceutical Production, Norwegian Institute of Public Health (FHI), Oslo, Norway. The formulation is previously published in detail[13]. IN naloxone was administered in a Unitdose disposable nasal spray device from Aptar Pharma (Louveciennes, France). IN naloxone was administered as 0.1 ml puff in one nostril with the participant supine. The IN doses were chosen on the basis of previous studies of the same naloxone formulation[13] as it corresponds to the lowest recommended starting dose for opioid overdose (0.4 mg) . The IM dose of 0.8 mg naloxone is the most commonly used dose for reversal in the Oslo Ambulance Service and it falls within the recommended starting dose for titration in pre- hospital opioid overdoses, which is between 0.4 and 2.0 mg both in Europe and the US [3,31,32]. Thus dose-response correlation of the model could also be observed.

During the course of the study, concerns regarding the nasal spray production and possible leakage from spray containers were raised. The study was halted for two weeks and all sprays where weighed at delivery to the Clinical Research Facility, during storage, at and after dose administration. The sprays with a change in weight of more than 0.0001 grams where excluded.

Remifentanyl hydrochloride (Ultiva, GlaxoSmithKline, Brentford, UK) was administered by TCI plasma control Minto model, using Alaris PK Guardrail syringe pumps (CareFusion Cooperation, UK). This computer based dosing system delivers the drug as an initial bolus and frequently changes the speed of the infusion to rapidly achieve steady state. Remifentanyl is ideally suited to create a state of stable opioid influence during the time of infusion. It has a half-life of only 3-10 minutes and no active metabolites[33]. Participants received remifentanyl for a total of 102 minutes each visit, the initial target was 2.5 ng/ml (n=4), followed by 1.3 ng/ml (n=5) or 1.0 ng/ml (n=3). A similar model is previously used[27,28]. The infusion was started at a dose of 1.0 ng/ml for one minute, then increased to target for 11 minutes. The combination of a drug with an ultra-short half-life[33] and the bolus dose given by the TCI-pump[34] 12 minutes should ensure steady-state. Remifentanyl infusion was continued for a further 90 minutes at the target concentration set. Naloxone was administered 12 minutes after the remifentanyl was started.

Safety

Participants were required to fast before a study session[35]. They were monitored by continuous oxygen saturation and three lead ECG and intermittent non-invasive blood pressure throughout. An anaesthetist was present during and minimum one hour after the administration of remifentanyl. For safety and to avoid adverse events from remifentanyl metoclopramide 10mg intravenous (IV) once, ondansetron 4 mg IV once, ephedrine 10 mg IV once and oxygen on nasal prongs (max 2L/minute) were allowed as concomitant medications in our study. Additional IV naloxone was available as rescue medicine.

Pharmacodynamic measurements

Pupil size was measured using a Neuroptics VIP 200 Pupillometer (Neuroptics, Irvine, CA, USA). To ensure similar light conditions the research facility had low and uniform ambient lighting at all study visits. The light was controlled using the application Light Meter version 2.1 by Vlad Polyanskiy for iPhone 5 at the start and end of each session reading mean 39.51 (38.18-40.84) lux. The pupils were given time to adapt prior to start of study. Pupillometry was measured at times -23, -18, -14, 0, 2, 5, 10, 15, 20, 25, 30, 35, 45, 60, 90 and 120 minutes, with 95, 100, 105, 110, 115 minutes added after 4 participants for higher resolution.

HPT were measured using Somedic MSA Thermotest (Somedic AB, Hørby, Sweden). This apparatus measures the relationship between the intensity of controlled thermal stimuli and the associated perception. The stimulus (1 °C per second rise time from the 32°C start temperature) was applied to intact skin by a hand-held thermode (area 25x 50 mm = 12,5 cm²) placed over the non-dominant thenar eminence while monitoring the temperature.

Participants were instructed to stop the increase in temperature once the sensation changed from warm to painful. The HPT was measured in °C and we calculated the average of three repeated single HPTs. The HPT was measured at times -21 minutes as a test to familiarize subjects with the procedure and then at -17, -13, 0, 3, 7, 12, 17, 20, 30, 45, 60, 90, 120 minutes. The individual HPT baseline was defined as the 0 thresholds, and the HPT- baseline response difference was calculated for the following measurements. Maximum temperature was set to 52 °C. If participants did not stop the stimulus prior to the maximum temperature, 52 °C was set as the result of that individual test.

Blood samples and analysis

Blood samples were drawn from an IV cannula placed in the antecubital fossa in the opposite arm of naloxone and remifentanyl administration. Blood for naloxone analysis was collected in Vacuette tubes without gel, and left to coagulate for 30 minutes, centrifuged for 10 minutes at 2200 G. Serum was transferred to cryotubes and immediately frozen at -20°C, and stored in an -80°C freezer before the end of the day. Naloxone samples were drawn at -25, 2, 5, 10, 15, 20, 25, 30, 35, 45, 60, 90, 120, 240 and 360 minutes. Naloxone was analysed by a validated liquid chromatography tandem mass spectrometry method and deuterated naloxone-d5 was used as an internal standard. The calibration range was from 0.02 - 10 ng/ml and the limit of quantification (LOQ) was 0.02 ng/ml with a coefficient of variation (CV) <6.8% and inaccuracy <4.0% (n=17). CV and inaccuracy of the quality controls QC1, 2, 3 (0.05, 5.0 and 8.0 ng/ml) were <7.4%, 0.6% (QC1), <3.3%, 0.6% (QC2), <2.2%, 0.9% (QC3) respectively in the pre-run validation (n=18). During in-run validation (n=18) the CV and inaccuracy were <5.1%, 5.1% (QC1), <3.0%, 0.4% (QC2), <3.6%, 0.2% (QC3). The method is published in full[13].

Statistics

Pharmacodynamic measurements were analysed in the whole group, and in the different remifentanyl doses subgroups using the statistics software R, version 2.13.1 (open source). A mixed linear model analysis with the combination of time and treatment as the fixed effects was employed for all comparisons reported, exceptions are clearly stated. To account for repeated measurements on each participant, participant id was included as a random effect. Using a likelihood ratio test, the time course for the two treatments between t=2 and t=90 were compared against the lowest point, and the time course from t >0 were compared between the treatments. When the time course for the two treatments was significantly different, the treatments were compared at each time point using a Wald test.

Serum concentration data was analysed by non-compartmental techniques using Win-Nonlin Standard version 6.4 (Pharsight Corporation, NJ, USA). Area under the curve; (AUClast (linear trapezoidal rule), terminal elimination half-life, Cmax and Tmax were calculated by computerized curve fitting. Dose-corrected AUCs were used to calculate the relative bioavailability. Comparing the present data with historic PK data were performed in accordance with the bioequivalence criteria[36] using independent sample T test on logarithmically transformed PK data. Descriptive statistics were performed in SPSS version 21 (IBM, NY, USA)

Concentration measurements below LOQ were not used in the analysis. Outlier points of the serum concentration profile that deviated more than twice, or less than half, of the expected value were taken out of the analysis. Missing data were not imputed. There were three missing samples and four outliers out of a total of 336 samples.

Results

The primary endpoint of this study was to describe the pharmacodynamic (PD) profile of IN versus IM naloxone. Data is reported as mean and 95% confidence intervals (CI) unless clearly stated.

Changes in pupillary size

All data pooled show mean pupil diameter before remifentanil of 6.6 mm (6.2- 7.0) in the IN group and 6.8 mm (6.6-7.1) in the IM group. After the start of remifentanil administration, the nadir (t=0) was 2.9 mm (2.6-3.2) in both groups. After naloxone administration (t=0) the reversal of miosis was seen in both treatment groups, but more prominent in the IM group. This effect was apparent in the whole dataset (n=12), and in each remifentanil subgroup. After remifentanil infusion was terminated (t=90) the pupils returned to initial size.

Please insert figure 2 here

Difference in pupil size from nadir

Analysis of changes in pupillary size (pooled data, n=12) from a horizontal line drawn from the nadir (t=0) showed (figure 2) that the time course is different from this low point for both treatments (p=0.002 for IN and p<0.001 for IM). A subgroup analysis showed a time course different from nadir for IM (p<0.01) but not for IN (p=0.68) in the 2.5 ng/ml remifentanil TCI-group (n=4). In 1.3 ng/ml TCI-group (n=5) both IN and IM showed time courses different from nadir (p<0.01), and in the 1.0 ng/ml TCI-group (n=3) neither of the treatments

produced a time course different from nadir (IN $p=0.38$, IM $p=0.14$).

Difference in pupil size between IN and IM

Figure 2 shows the time course of pupillary size, how remifentanyl induces miosis and how naloxone reverses this. The IM and IN curve separated after naloxone is administered ($t=0$) and joined up at $t=45$ until the end of the study session. This effect was apparent in the data set as a whole ($p<0.001$) and in all three subgroups ($p<0.02$ – $p<0.001$).

When comparing each time point (pooled data), the difference in miosis reversal was significantly different between IM and IN from 5 to 35 minutes after naloxone administration (Supplementary material 2). The difference was not significant for the rest of the study session. The apex of miosis reversal was 15 minutes for IM and 30 minutes for IN. Miosis become more apparent from 60 minutes and until remifentanyl was stopped at 90 minutes and pupillary size returned to initial size. The TCI- subgroup analysis showed a difference between the two routes of administration at all time points from 5 to 25 minutes for the remifentanyl TCI 1.0 ng/ml group. For the remaining two groups only two-time points showed significant difference between the two routes of administration, 10-15 minutes for the 1.3 ng/ml remifentanyl group and at 15-20 minutes for the 2.5 ng/ml group (Supplementary material 2).

Please insert figure 3 here

Heat Pain Threshold

Figure 3 shows the results from the HPT measurements. The between-subjects variability, shown as 95% confidence intervals of means in the figure, was large as expected (average $SD=2.67^{\circ}C$) while the within-subjects variability was small (average $SD=0.96^{\circ}C$). HPT-means increased from the pre-remifentanyl recording (-13 and -17 min means) to $t=0$ in both groups (by $1.1^{\circ}C$ in IN and $0.5^{\circ}C$ in IM). A consistent HPT-decrease from the peak at $t=0$ seemed to occur for both treatments, most consistently from about 30-60 minutes, but the effect size was moderate (about $-0.8^{\circ}C$ at 30 min in both treatment groups). Neither with time, nor between IM and IN, statistically significant different time courses appeared in the material as a whole ($p=0.89$). In the analysis of the TCI-subgroups only the 1.0 ng/ml-group displayed a significant different time course ($p=0.004$) between the routes of administration. A comparison of the two routes showed only three significant time points

(t= 12, 90 and 120), and no apparent pattern or systematic difference.

Pharmacokinetic variables

The secondary endpoint in this study was the pharmacokinetic (PK) profile of IN and IM naloxone under opioid influence.

Both IN sprays and IM syringes were accurately weighed before and after administration, and the actual dose naloxone administered was calculated to form the base of the PK analysis. Mean IN dose was 0.75 mg and mean IM dose was 0.82 mg.

Please insert figure 4 here

Please insert table 1 here

The main variables are presented in table 2 and figure 4. The relative bioavailability (F) of IN compared to IM naloxone was 0.75 (95% CI 0.63-0.87) (n=11). One individual missed serum naloxone samples at t=240 and 360 minutes, so the elimination rate constant could not be calculated. This participant was therefore excluded from bioavailability, clearance and distribution volume analysis. Extrapolation of Area Under the Curve (AUC) last to AUC_{∞} was 2.5% for IN and 3.0% for IM, indicating that our sampling schedule covers above 97% of the serum concentration curve.

C max and AUC_{last} for IM was about twice that of IN, IN T_{max} was 3 times faster (7.75 versus 28 min), while $t_{1/2}$, clearance and volume of distribution were similar

We calculated the time to 50% and 80% of maximum concentration (T_{max50} and T_{max80}). Mean T_{max50} for IN was 11.4 minutes and for IM 4.25 minutes. T_{max80} was 19.8 minutes for IN and 6.42 minutes for IM.

PK/ PD comparison

Please insert figure 5 here

The hysteresis plots show a counter clockwise direction for both IN and IM naloxone. Visual inspection of the curve indicates a maximum reversal of miosis at around 2.5 ng/ml and 15 minutes for IM 0.8 mg. IN naloxone never reached this serum concentration level. The hysteresis loop for the TCI 2.5 ng/ml group show a very small

degree of reversal by IN naloxone at that remifentanil dose.

Safety

Adverse events were reported using Common Terminology Criteria for Adverse Events version 4.0. No serious adverse events were reported. Four cases of intercurrent illness and three cases of adverse events were reported in seven individual participants. All cases resolved spontaneously with no sequelae. The adverse events were all headaches and were defined as having a possible relationship to the IN naloxone formulation. No participants required the administration of the concomitant medications allowed in the protocol.

Mean (min-max) total remifentanil doses for TCI 1.0 ng/ml were 307 (239-375) micrograms, TCI 1.3 ng/ml were 426 (393-460) micrograms and 2.5 ng/ml were 771 (654-888) micrograms.

Discussion

The major findings of this study were that a target controlled infusion of remifentanil provided satisfactory conditions for studying the pharmacodynamics of naloxone, and that pupillometry was a better modality than heat pain threshold. There was a significant delay in the transfer of naloxone from blood to the site of action. In this model, the time course of the naloxone antagonism was clearly displayed, and the effect of 0.8 mg naloxone IM was both more rapid and profound than for 0.8 mg IN, the latter with a bioavailability of 0.75 relative to IM. These observations were compatible with the differences in the respective serum concentration time course curves.

Several models for studying the pharmacodynamics of naloxone have been published [17,20,37,38]. They have all in common that they lacked the potential of obtaining reproducible conditions for the agonist that is necessary for studying the time course of naloxone action only. In this study target control infusion was used for its potential to rapidly obtain and maintain steady state conditions. TCI administers remifentanil based on a complex model that renders reproducible conditions across individuals and occasions to a higher degree than ordinary, arbitrary infusion regimens. All the doses remifentanil used in this model expose participants to levels of remifentanil below the threshold of < 0.1 microg/kg/min expected to produce opioid tolerance or hyperalgesia[39]. Such effects would confound the pharmacodynamic measurements.

It was expected in this explorative study that both IN and IM doses would provide a significant antagonism of the remifentanil 2.5 ng/ml target infusion induced miosis, as a similar dose of naloxone reversed miosis with

similar doses remifentanyl in an earlier PD study [40] and 2.5 ng/ml were used in a similar research protocol measuring HPT earlier[28]. This assumption turned out to be wrong as the pupillary response to naloxone doses were poor under the 2.5 ng/ml TCI of remifentanyl. The division into three dosing sub groups reducing from the initially planned target of 2.5 ng/ml were done to improve resolution of the pharmacodynamic measurements. Regardless the pupillometry model gave good resolution as it could both demonstrate time-course effects of naloxone as well as separating the effects of two different administration forms/doses. This was in contrast to the HPT model which was insensitive to the experimental conditions in this study in all groups.

The counter-clock wise hysteresis plots show a time delay between the serum naloxone concentration and the effect in pupil size regardless of administration form. This is similar to the plots seen for the opioid antagonist samidorphan and for the opioid fentanyl [19,41]. Although similar to these related drugs, we cannot answer whether this is a distribution delay to the effect site, slow receptor kinetics or other mechanisms.

In this crossover study, it was clearly shown that the 0.8 mg naloxone dose given IM performed better than of 0.8mg IN, both with respect to speed of onset and extent of reversal. This was expected as the absolute bioavailability of IN for this formulation is 0.54[13], and that the relative bioavailability of IN to IM naloxone was found to be 0.75. Certainly, this should be taken into account when deciding a clinical useful concentration of nasal naloxone.

There may be an interaction between remifentanyl and naloxone. A higher AUC of naloxone was found in this study compared with data from previous trials using the same formulation[13] and other studies of high concentration/ low volume naloxone formulations[42,43]. Applying independent sample T test and the bioequivalence criteria on the present and using the historic data as reference, mean difference and 90% CIs were 0.62 (0.48-0.81) for AUC_{0-∞} ratio and 0.87 (0.63-1.20) for maximum concentration (C_{max}) ratio, respectively. The difference was statistically significant for AUC, this likely indicates a clinically relevant interaction. If true, this may be relevant for overdose victims but needs further investigation.

The time to maximum concentration (T_{max}) of 8 min after IM administration, which indicates an extremely rapid uptake of naloxone. Previously reported T_{max} for IM naloxone has been in the mean range of 10 to 25 minutes [45,46]. Again, we may speculate whether this is a result of the remifentanyl infusion. Otherwise the PK parameters were within previously reported ranges.

Any naloxone formulation intended to treat opioid overdoses must weigh the dose and onset of action between rapid and sufficient reversal of respiration without the precipitation of acute withdrawal. IN formulations have slower uptake as shown by higher T_{max} than injection [45], resulting in a slower onset of action as shown in this study. However, as nasal sprays can be administered to overdose patients prior to the arrival of emergency medical staff, it can still shorten time to treatment effect. The somewhat slower onset may also reduce the symptoms of withdrawal. IN naloxone is becoming more available and is increasingly forming the basis of public health intervention to combat death from opioid overdoses. PD studies and our model may help to bridge the gap between PK studies in healthy volunteers and the patient population the drug is meant to serve.

Beside exploring a PK/PD model for opioid reversal, the objective of this study was to explore an IN dose of 0.8 mg naloxone to the clinically relevant dose of 0.8 mg IM naloxone. The overall conclusion is that a IN dose of 0.8 mg, as expected was inferior to the same nominal dose IM. Further development of IN naloxone for emergency reversal of opioid intoxication requires higher doses.

Limitations

The dataset is limited with a low number of participants in each subgroup of remifentanyl, especially in the 1.0 ng/ml group with $n=3$. Negative observations may be caused by low power and the results therefore have to be interpreted with caution. A higher dose of IN naloxone administered, more equivalent to the IM dose, would have yielded more significant change in pupillometry in the IN group. Remifentanyl is a potent opioid with a unique elimination by blood esterases and may have different physiological effect to those of opioids more commonly associated with overdose. Pupillometry is a pharmacodynamic measurement with no direct clinical significance, although it is one of the cardinal symptoms in opioid overdose. In an overdose, the respiratory depression is the main symptom to treat, and caution is required to translate the PD effects on miosis directly to the desired effects needed to reverse an opioid overdose. Adequate PK/PD modelling cannot be conducted as we do only have venous blood concentrations.

Conflict of Interest/Disclosure

Norwegian University of Science and Technology (NTNU) and its subsidiary Technology Transfer Office (TTO) have a licensing agreement with Den norske Eterfabrikk (DnE) regarding the naloxone formulation studied. DnE has send an application for marketing authorization for a drug for human consumption. NTNU, TTO and Ola Dale (OD) have financial benefit from these contracts. OD has been engaged by DnE as Principle Investigator in a pharmacokinetic study of naloxone for which OD receives no personal honorarium. DnE has

compensated OD for two travels from Trondheim to Oslo.

Arne Kristian Skulberg (AKS) has signed a non-compete contract with DnE lasting the duration of his PhD program (estimated 2018). This does not limit AKS right to publish results and he receives no royalties or other financial benefits from DnE/ NTNU. Other authors declare they have no conflicts of interest.

Author Contributions

OD was principal investigator and contributed to all aspects of this study. AKS and IT has written the manuscript, designed the research protocol, conducted the research and analysed data. ØS has performed the mixed model statistical analysis. TN and SS has analysed serum samples and prepared data for PK analysis. TS has designed the HPT measurement program. TL has been pivotal in the development of the IN naloxone formulation, the fundament of this study. All authors have reviewed the final draft of the text.

References:

1. United Nations Office on Drugs and Crime (2016) World Drug Report. United Nations publication, Sales No. E.16.XI.7
2. Rudd RA, Aleshire N, Zibbell JE, Gladden RM (2016) Increases in Drug and Opioid Overdose Deaths - United States, 2000-2014. *MMWR Morb Mortal Wkly Rep* 64 (50-51):1378-1382. doi:10.15585/mmwr.mm6450a3
3. Clarke SF, Dargan PI, Jones AL (2005) Naloxone in opioid poisoning: walking the tightrope. *Emerg Med J* 22 (9):612-616. doi:10.1136/emj.2003.009613
4. World Health Organization (2014) Community management of opioid overdose Substance Use:
5. Strang J, McDonald R, Tas B, Day E (2016) Clinical provision of improvised nasal naloxone without experimental testing and without regulatory approval: imaginative shortcut or dangerous bypass of essential safety procedures? *Addiction* 111 (4):574-582. doi:10.1111/add.13209
6. Dale O (2016) Ethical issues and stakeholders matter. *Addiction* 111 (4):587-589. doi:10.1111/add.13267
7. Dowling J, Isbister GK, Kirkpatrick CM, Naidoo D, Graudins A (2008) Population pharmacokinetics of intravenous, intramuscular, and intranasal naloxone in human volunteers. *Ther Drug Monit* 30 (4):490-496. doi:10.1097/FTD.0b013e3181816214
8. Kerr D, Kelly AM, Dietze P, Jolley D, Barger B (2009) Randomized controlled trial comparing the effectiveness and safety of intranasal and intramuscular naloxone for the treatment of suspected heroin overdose. *Addiction* 104 (12):2067-2074. doi:10.1111/j.1360-0443.2009.02724.x
9. Costantino HR, Illum L, Brandt G, Johnson PH, Quay SC (2007) Intranasal delivery: physicochemical and therapeutic aspects. *Int J Pharm* 337 (1-2):1-24. doi:10.1016/j.ijpharm.2007.03.025
10. Dale O, Hoffer C, Sheffels P, Kharasch ED (2002) Disposition of nasal, intravenous, and oral methadone in healthy volunteers. *Clin Pharmacol Ther* 72 (5):536-545. doi:10.1067/mcp.2002.128386
11. Pond SM, Tozer TN (1984) First-pass elimination. Basic concepts and clinical consequences. *Clin Pharmacokinet* 9 (1):1-25. doi:10.2165/00003088-198409010-00001
12. ADAPT Pharma NARCAN® (naloxone hydrochloride) nasal spray- PRESCRIBING INFORMATION. <http://www.narcannasalspray.com/pdf/NARCAN-Prescribing-Information.pdf>. Accessed 22. FEBRUARY 2016 2016
13. Tylleskar I, Skulberg AK, Nilsen T, Skarra S, Jansook P, Dale O (2017) Pharmacokinetics of a new, nasal formulation of naloxone. *Eur J Clin Pharmacol*:1-8. doi:10.1007/s00228-016-2191-1
14. Macleod DB, Habib AS, Ikeda K, Spyker DA, Cassella JV, Ho KY, Gan TJ (2012) Inhaled fentanyl aerosol in healthy volunteers: pharmacokinetics and pharmacodynamics. *Anesth Analg* 115 (5):1071-1077. doi:10.1213/ANE.0b013e3182691898
15. Harris SC, Perrino PJ, Smith I, Shram MJ, Colucci SV, Bartlett C, Sellers EM (2013) Abuse potential, pharmacokinetics, pharmacodynamics, and safety of intranasally administered crushed oxycodone HCl abuse-deterrent controlled-release tablets in recreational opioid users. *J Clin Pharmacol*. doi:10.1002/jcph.235
16. Staahl C, Upton R, Foster DJ, Christrup LL, Kristensen K, Hansen SH, Arendt-Nielsen L, Drewes AM (2008) Pharmacokinetic-pharmacodynamic modeling of morphine and oxycodone concentrations and analgesic effect in a multimodal experimental pain model. *J Clin Pharmacol* 48 (5):619-631. doi:10.1177/0091270008314465
17. Gufford BT, Ainslie GR, Padowski JM, Layton ME, White JR, Paine MF (2015) A novel human model to assess reversal of opioid effects. *Clin Pharmacol Ther* 97:S13-S14. doi:<http://dx.doi.org/10.1002/cpt.48>
18. Stoops WW, Lofwall MR, Nuzzo PA, Craig LB, Siegel AJ, Walsh SL (2012) Pharmacodynamic profile of tramadol in humans: influence of naltrexone pretreatment. *Psychopharmacology (Berl)* 223 (4):427-438. doi:10.1007/s00213-012-2739-4
19. Shram MJ, Silverman B, Ehrich E, Sellers EM, Turncliff R (2015) Use of Remifentanyl in a Novel Clinical Paradigm to Characterize Onset and Duration of Opioid Blockade by Samidorphan, a Potent mu-Receptor Antagonist. *J Clin Psychopharmacol* 35 (3):242-249. doi:10.1097/JCP.0000000000000320
20. Loimer N, Hofmann P, Chaudhry HR (1992) Nasal administration of naloxone for detection of opiate dependence. *J Psychiatr Res* 26 (1):39-43
21. Meissner K, Avram MJ, Yermolenka V, Francis AM, Blood J, Kharasch ED (2013) Cyclosporine-inhibitable blood-brain barrier drug transport influences clinical morphine pharmacodynamics. *Anesthesiology* 119 (4):941-953. doi:10.1097/ALN.0b013e3182a05bd3
22. Rollins MD, Feiner JR, Lee JM, Shah S, Larson M (2014) Pupillary effects of high-dose opioid quantified with infrared pupillometry. *Anesthesiology* 121 (5):1037-1044. doi:10.1097/ALN.0000000000000384
23. Kharasch ED, Francis A, London A, Frey K, Kim T, Blood J (2011) Sensitivity of intravenous and oral alfentanil and pupillary miosis as minimal and noninvasive probes for hepatic and first-pass CYP3A induction. *Clin Pharmacol Ther* 90 (1):100-108. doi:10.1038/clpt.2011.59
24. Friedman MS, Manini AF (2016) Validation of Criteria to Guide Prehospital Naloxone Administration for Drug-Related Altered Mental Status. *J Med Toxicol* 12 (3):270-275. doi:10.1007/s13181-016-0549-5

25. Gustorff B, Felleiter P, Nahlik G, Brannath W, Hoerauf KH, Spacek A, Kress HG (2001) The effect of remifentanyl on the heat pain threshold in volunteers. *Anesth Analg* 92 (2):369-374
26. Kim TE, Kim KP, Shin D, Chung YJ, Price J, Mistry P, Jang JJ, Yu KS (2012) Assessment of the analgesic effect of remifentanyl using three pain models in healthy Korean volunteers: a randomized, controlled study. *Basic Clin Pharmacol Toxicol* 110 (6):518-523. doi:10.1111/j.1742-7843.2011.00849.x
27. Lenz H, Raeder J, Draegni T, Heyerdahl F, Schmelz M, Stubhaug A (2011) Effects of COX inhibition on experimental pain and hyperalgesia during and after remifentanyl infusion in humans. *Pain* 152 (6):1289-1297. doi:10.1016/j.pain.2011.02.007
28. Comelon M, Raeder J, Stubhaug A, Nielsen CS, Draegni T, Lenz H (2016) Gradual withdrawal of remifentanyl infusion may prevent opioid-induced hyperalgesia. *Br J Anaesth* 116 (4):524-530. doi:10.1093/bja/aev547
29. ASA Physical Classification System. American Society of Anesthesiologists. <http://www.webcitation.org/6fl0gQVDp>.
30. Brown RL, Leonard T, Saunders LA, Papanicolaou O (1998) The prevalence and detection of substance use disorders among inpatients ages 18 to 49: an opportunity for prevention. *Prev Med* 27 (1):101-110. doi:10.1006/pmed.1997.0250
31. Health Products Regulatory Authority Ireland Summary of Product Characteristics Naloxone B Braun. <http://www.webcitation.org/6g4edopWl>
32. Boyer EW (2012) Management of opioid analgesic overdose. *N Engl J Med* 367 (2):146-155. doi:10.1056/NEJMra1202561
33. GlaxoSmithKline UK Ltd Ultiva Injection SmPC. Datapharm. <http://www.webcitation.org/6rX0zM3Bd>. Accessed 27 June 2017
34. Minto CF, Schnider TW, Egan TD, Youngs E, Lemmens HJ, Gambus PL, Billard V, Hoke JF, Moore KH, Hermann DJ, Muir KT, Mandema JW, Shafer SL (1997) Influence of age and gender on the pharmacokinetics and pharmacodynamics of remifentanyl. I. Model development. *Anesthesiology* 86 (1):10-23
35. AAGBI Safety Guidelines, Pre-operative Assessment and Patient Preparation (2010). The Association of Anaesthetists of Great Britain and Ireland.
36. US Food and Drug Administration (2001) Statistical Approaches to Establishing Bioequivalence. Guidance for Industry.
37. Olofsen E, van Dorp E, Teppema L, Aarts L, Smith TW, Dahan A, Sarton E (2010) Naloxone reversal of morphine- and morphine-6-glucuronide-induced respiratory depression in healthy volunteers: a mechanism-based pharmacokinetic-pharmacodynamic modeling study. *Anesthesiology* 112 (6):1417-1427. doi:10.1097/ALN.0b013e3181d5e29d
38. Middleton LS, Nuzzo PA, Lofwall MR, Moody DE, Walsh SL (2011) The pharmacodynamic and pharmacokinetic profile of intranasal crushed buprenorphine and buprenorphine/naloxone tablets in opioid abusers. *Addiction* 106 (8):1460-1473. doi:10.1111/j.1360-0443.2011.03424.x
39. Yu EH, Tran DH, Lam SW, Irwin MG (2016) Remifentanyl tolerance and hyperalgesia: short-term gain, long-term pain? *Anaesthesia* 71 (11):1347-1362. doi:10.1111/anae.13602
40. Rosow CE, Gomery P, Chen TY, Stefanovich P, Stambler N, Israel R (2007) Reversal of opioid-induced bladder dysfunction by intravenous naloxone and methylnaltrexone. *Clin Pharmacol Ther* 82 (1):48-53. doi:10.1038/sj.clpt.6100164
41. Kharasch ED, Hoffer C, Whittington D (2004) Influence of age on the pharmacokinetics and pharmacodynamics of oral transmucosal fentanyl citrate. *Anesthesiology* 101 (3):738-743
42. Krieter P, Chiang N, Gyaw S, Skolnick P, Crystal R, Keegan F, Aker J, Beck M, Harris J (2016) Pharmacokinetic Properties and Human Use Characteristics of an FDA-Approved Intranasal Naloxone Product for the Treatment of Opioid Overdose. *J Clin Pharmacol* 56 (10):1243-1253. doi:10.1002/jcph.759
43. McDonald R, Lorch U, Woodward J, Bosse B, Dooner H, Mundin G, Smith K, Strang J (2017) Pharmacokinetics of concentrated naloxone nasal spray for opioid overdose reversal: Phase I healthy volunteer study. *Addiction*. doi:10.1111/add.14033
44. Dale O, Nilssen T, Loftsson T, Hjorth Tonnesen H, Klepstad P, Kaasa S, Holand T, Djupesland PG (2006) Intranasal midazolam: a comparison of two delivery devices in human volunteers. *J Pharm Pharmacol* 58 (10):1311-1318. doi:10.1211/jpp.58.10.0003
45. McDonald R, Danielsson Glende O, Dale O, Strang J (2017) International patent applications for non-injectable naloxone for opioid overdose reversal: Exploratory search and retrieve analysis of the PatentScope database. *Drug and alcohol review*. doi:10.1111/dar.12571
46. Evzio- Full prescribing information (2014).

Table 1:

	Cmax (ng/ml)	Tmax (min)	AUClast (min*ng/ml)	Half- life (min)	Clearance /F* (ml/min)	Volume of distribution/F * (L)	Bioavailability (F)
IM 0.8 mg	3.62 (2.64- 4.60)	7.75 (5.01- 10.5)	244 (197- 292)	69.7 (59.5- 79.8)	3150 (2600- 3719)	325 (232-419)	---
IN 0.8 mg	1.63 (1.25- 2.02)	28.0 (22.0- 34.0)	160 (125- 195)	63.7 (59.2- 68.2)	3420 (2745- 4095)	317 (245-390)	0.75

* For extravascular models in WinNonlin the fraction of dose absorbed cannot be estimated; therefore, Volume and Clearance for these models are actually Volume/F or Clearance/F where F is the fraction of dose absorbed. We have estimated this to be 1 for IM and 0.75 for IN.

Table 1: Pharmacokinetic calculations for intranasal and intramuscular naloxone. Data are presented as mean (95% confidence intervals). Cmax: maximum concentration, Tmax: time to maximum concentration, AUClast: area under the curve until last measurement.

FIGURE LEGENDS

Figure 1: Schematic illustration of samples and measurements and sequence of events in the protocol for each session. Remifentanyl infusion lasts 102 minutes and naloxone is administered at $t=0$.

Figure 2: Time course of variation of pupil size (mean, 95% confidence interval). Pupils are adapted to low ambient light and remifentanyl TCI is administered between $t= -12$ and $t= 90$ minutes. 0.8 mg naloxone is administered at $t=0$ as either nasal spray (triangles) or intramuscular injection (circles).

Figure 3: Time course of variation of heat pain threshold (mean, 95% confidence interval). Remifentanyl TCI is administered between $t = -12$ and $t = 90$ minutes and naloxone administered at $t = 0$. 0.8 mg naloxone is administered at $t = 0$ as either nasal spray (triangles) or intramuscular injection (circles).

Figure 4: Time course of serum concentrations of naloxone (ng/ml) mean and 95% confidence interval after intranasal or intramuscular administration of 0.8 mg naloxone in healthy human volunteers receiving a remifentanyl infusion ($n = 12$). Triangles represent the nasal spray and circles the intramuscular naloxone.

Figure 5: Hysteresis plot of pupil diameter and naloxone concentration during a stable remifentanyl infusion. Each point is numbered corresponding to time it was measured. Error bars are removed for clarity. The arrow indicates the direction of time. Triangles represent the nasal spray and circles the intramuscular naloxone.

Supplementary material 1

Difference in pupil diameter between intramuscular (IM) and intranasal (IN) naloxone administration. Significant p-values are marked with an asterisk (*).

Time (min)	All data n=12			TCI 1.0 ng/ml n=3		TCI 1.3 ng/ml n=5			TCI 2.5 ng/ml n=4		
	Difference (mm)	p-value		Difference (mm)	p-value	Difference (mm)	p-value		Difference (mm)	p-value	
0	-0.025	0.93		0.233	0.68	0.06	0.89		-0.325	0.44	
2	0.225	0.40		0.667	0.23	0.16	0.70		-0.025	0.95	
5	0.7583	0.006	*	1.3333	0.017	*	0.64	0.12	0.475	0.26	
10	0.95	<0.001	*	1.5	0.007	*	0.98	0.018	0.5	0.24	
15	1.258	<0.001	*	1.2667	0.024	*	1.28	0.002	1.225	0.004	*
20	0.825	0.003	*	1.3667	0.015	*	0.42	0.31	0.925	0.028	*
25	0.775	0.005	*	1.3	0.020	*	0.7	0.09	0.475	0.26	
30	0.6083	0.026	*	0.4	0.47		0.56	0.18	0.825	0.05	
35	0.5417	0.048	*	0.833	0.14		0.52	0.21	0.35	0.41	

45	0.167	0.54	0.567	0.31	0.3	0.47	-0.3	0.48
60	0.025	0.93	0.0667	0.91	0.04	0.92	-0.025	0.95
90	0.251	0.37	0.6	0.28	0.22	0.60	0.0696	0.88

Figure 1

Schematic illustration of a study visit

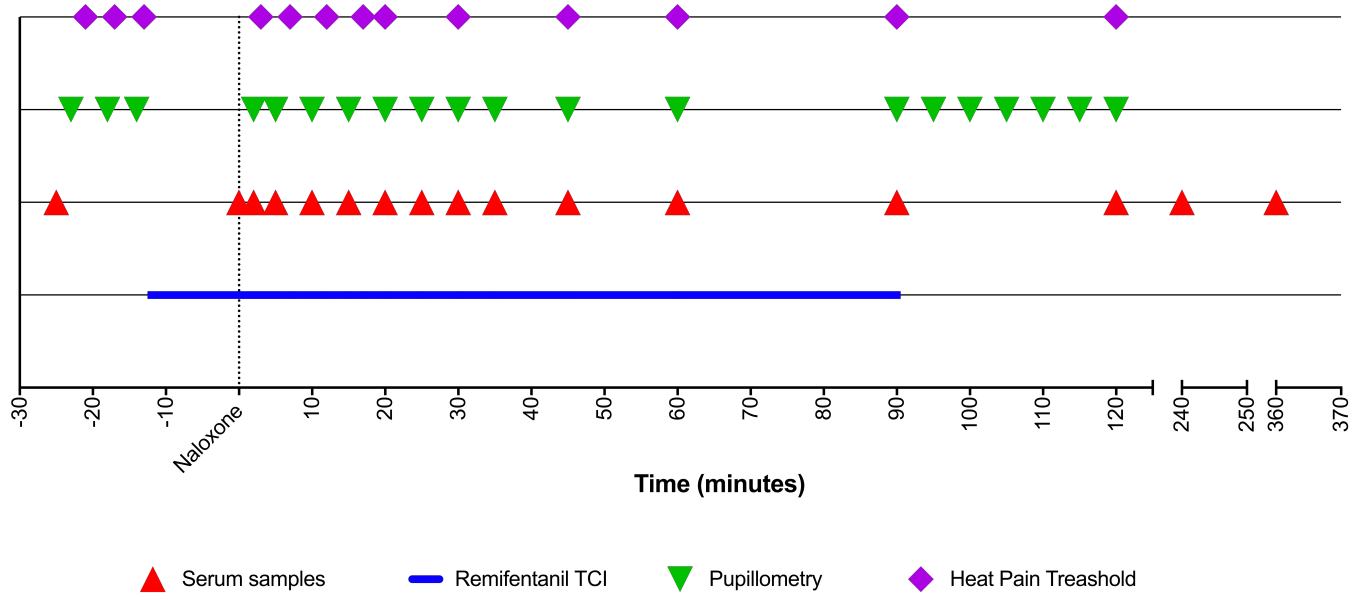


Figure 2

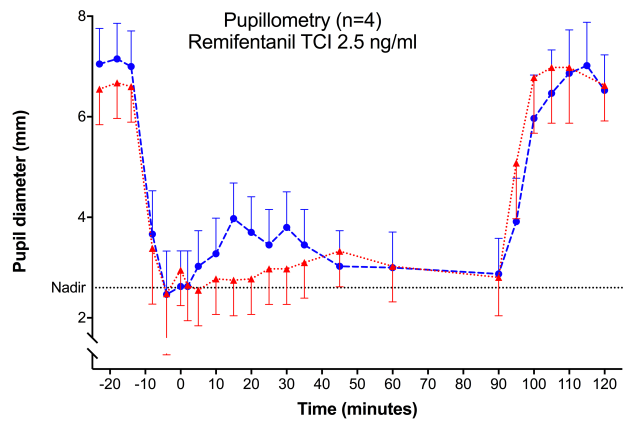
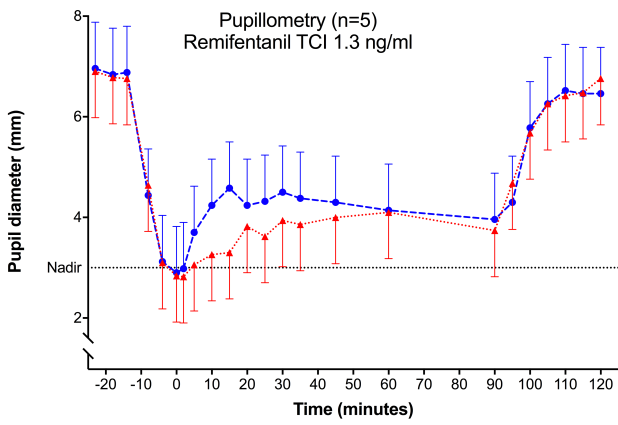
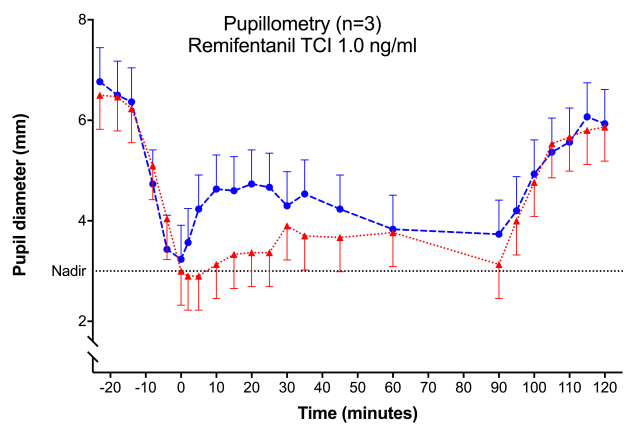
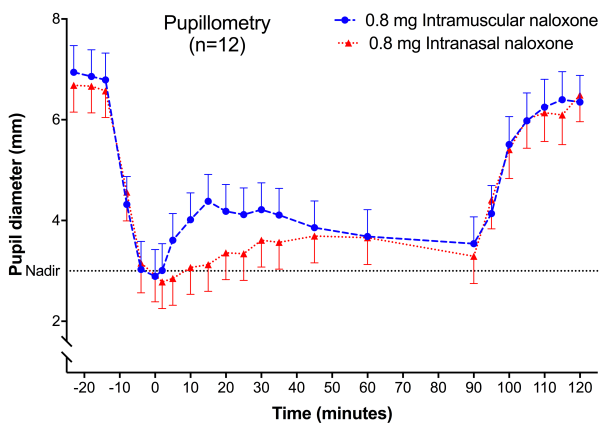


Figure 3

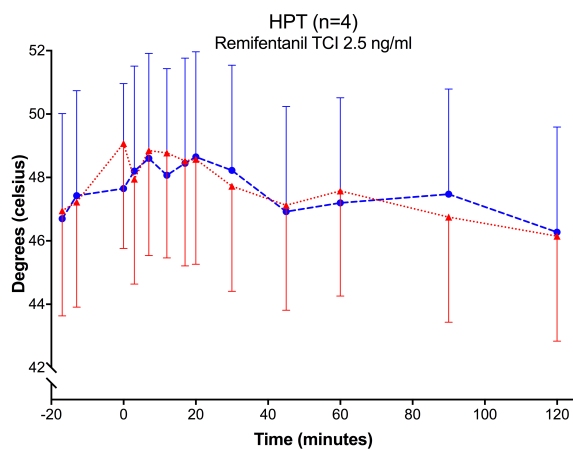
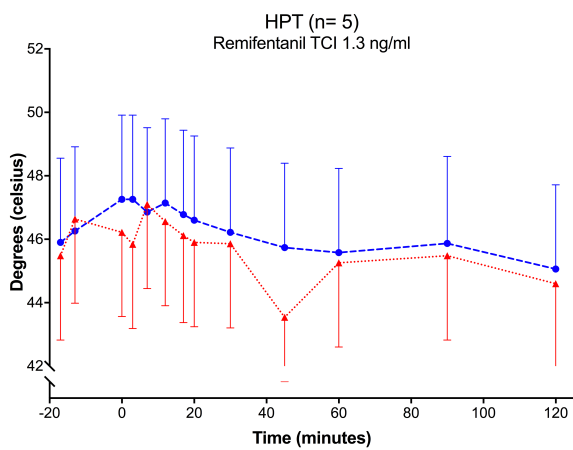
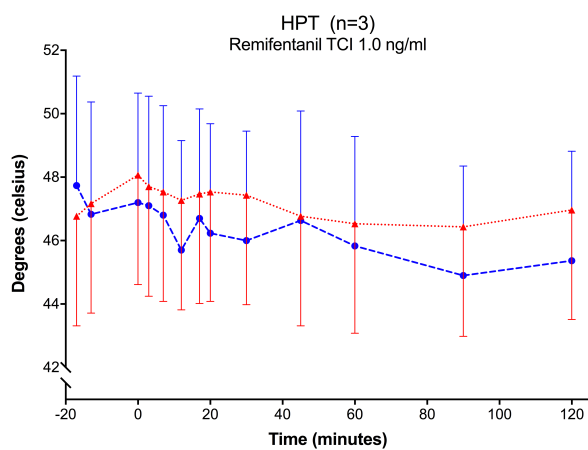
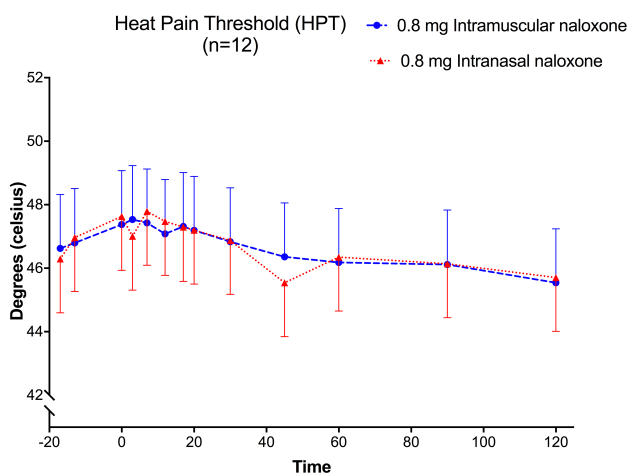


Figure 4

