



# DNA Sequencing Historical Lichen Specimens

Sonja Kistenich<sup>1\*</sup>, Rune Halvorsen<sup>1†</sup>, Audun Schröder-Nielsen<sup>1†</sup>, Lisbeth Thorbek<sup>1†</sup>, Einar Timdal<sup>1†</sup> and Mika Bendiksby<sup>1,2</sup>

<sup>1</sup> Natural History Museum, University of Oslo, Oslo, Norway, <sup>2</sup> NTNU University Museum, Norwegian University of Science and Technology, Trondheim, Norway

## OPEN ACCESS

### Edited by:

Freek T. Bakker,  
Wageningen University & Research,  
Netherlands

### Reviewed by:

Henrik R. Nilsson,  
University of Gothenburg, Sweden  
Carla Santos,  
Centro de Engenharia Biológica,  
Universidade do Minho, Portugal

### \*Correspondence:

Sonja Kistenich  
sonja.kistenich@gmail.com

<sup>†</sup>These authors have contributed  
equally to this work

### Specialty section:

This article was submitted to  
Evolutionary and Population Genetics,  
a section of the journal  
Frontiers in Ecology and Evolution

**Received:** 06 September 2018

**Accepted:** 08 January 2019

**Published:** 23 January 2019

### Citation:

Kistenich S, Halvorsen R,  
Schröder-Nielsen A, Thorbek L,  
Timdal E and Bendiksby M (2019)  
DNA Sequencing Historical Lichen  
Specimens. *Front. Ecol. Evol.* 7:5.  
doi: 10.3389/fevo.2019.00005

Biological specimens in natural history collections worldwide are increasingly being used in biogeographical, environmental, and taxonomic studies. For their meaningful use, correct species identification is crucial. For example, clarifying if a species is new to science requires an overview of what has already been described. This includes comparisons with existing authoritative specimens (types). Most type specimens are rather old and their DNA expected to be degraded to various extents. Comparative DNA sequence analysis is in regular use in taxonomic research of today and is essential for identifying and delimiting species. In this study, we focus on lichenized fungi (lichens), in which many species groups are highly inconspicuous and impossible to identify to species based on morphology alone. Our aim was to test the non-mutually exclusive hypotheses that DNA quality of lichens depends on (1) time since collection, (2) taxonomic affinity, and/or (3) habitat/ecology. We included two species from each of four different lichen genera (i.e., *Cladonia*, *Nephroma*, *Peltigera*, and *Ramalina*), each species pair with a different autecology. For each species, we included samples from approximately every 25 years from present to about 150 years back in time. We used a two-step PCR-based approach followed by sequencing on an Ion Torrent PGM to produce target sequences (mtSSU) of degraded DNA. We received satisfactory DNA sequence information for 54 of 56 specimens. We recovered full-length sequences for several more than 100-years-old specimens, including a 127-years-old specimen, and retrieved enough sequence information for species identification of a 150-years-old specimen. As expected, sequencing success was negatively correlated with age of the specimens. It also varied with taxonomic affinity. We found no significant correlation between sequencing success and habitat ecology of the investigated specimens. The herein tested Ion Torrent sequencing approach outperformed Sanger sequencing with regard to sequencing success and efficiency. We find the protocol used herein highly suitable for obtaining sequences from both young and old lichen specimens and discuss potential improvements to it.

**Keywords:** museomics, herbarium genomics, Ion Torrent, mtSSU, lichens, natural history collections

## INTRODUCTION

Herbarium specimens are of immense value for biological research, for example in a wide range of spatial comparative analyses, for monitoring changes in biodiversity over time, and last, but not least, in taxonomic and systematic research (e.g., Lavoie, 2013; Greve et al., 2016; Soltis and Soltis, 2016; James et al., 2018; Meineke et al., 2018). In particular, biogeographical and environmental

research on climate change effects benefit extensively from the use of herbarium specimens (e.g., Holmes et al., 2016; Willis et al., 2017). However, a prerequisite for meaningful use of historical specimens in research is that these are correctly identified.

Taxonomic identification has traditionally been based on morphology, which has been the primary means of identification before the advance of molecular methods. Nowadays, morphology is often used in combination with DNA analyses and other data. A popular method for fast species identification of biological material is DNA barcoding (Hebert et al., 2003; Hajibabaei et al., 2007). DNA barcoding comprises the sequencing of a selected DNA region of the genome and BLAST searches against a library of named DNA barcodes (see also Kress et al., 2015), as implemented in the Barcode of Life Data Systems (BOLD; Ratnasingham and Hebert, 2007), a partner of the International Barcode of Life (iBOL, <http://ibol.org>) project. Of particular interest is DNA sequencing of type material, on which the barcode library ideally should be based, as these specimens link a unique scientific name to each species.

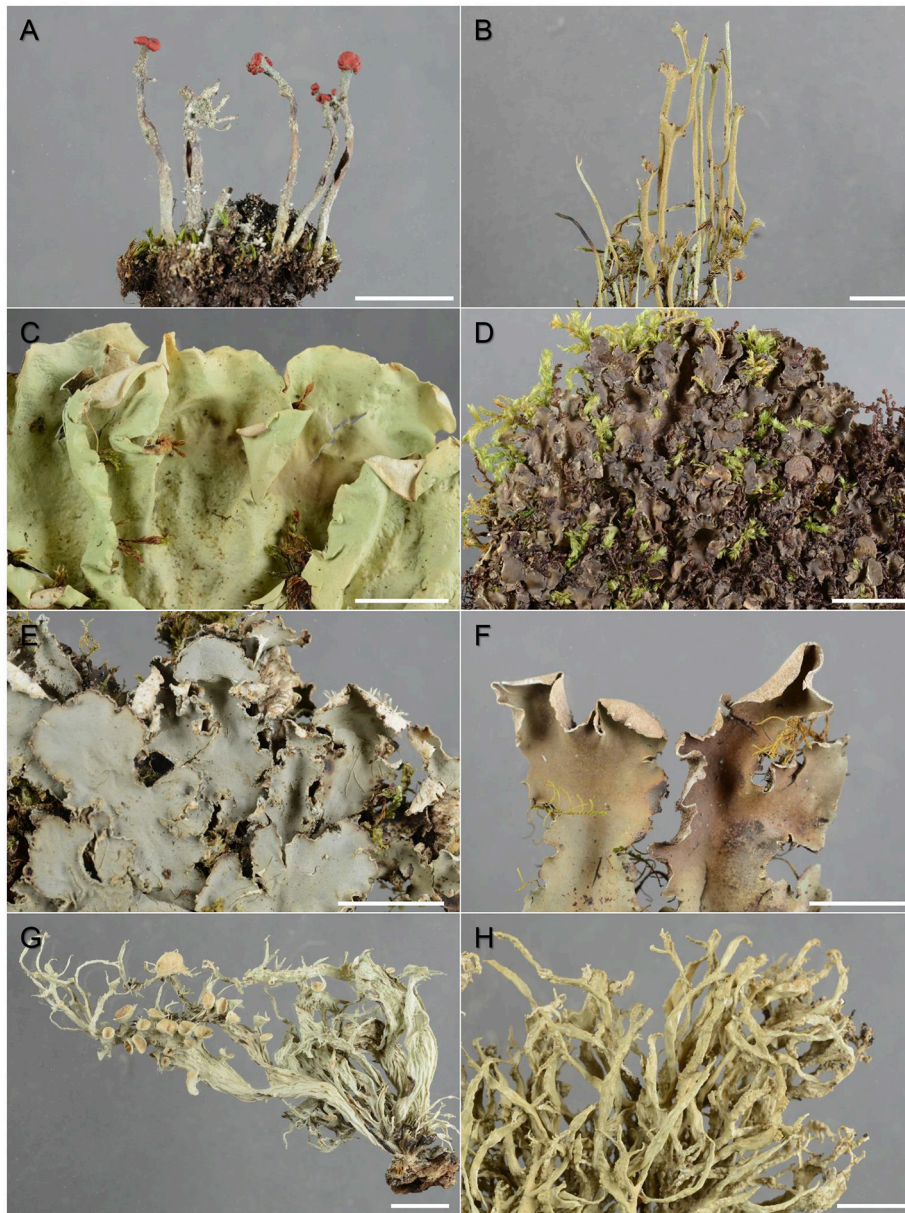
There are challenges, however, linked to obtaining DNA from long dead organic material. Weiß et al. (2016) found that DNA degrades over time, albeit contrasting earlier finding by Staats et al. (2011). Type specimens are typically rather old and the DNA is expected to have become degraded to various extents. Many types were collected during the numerous research expeditions in the nineteenth and early twentieth century and are often more than 100 years old. Moreover, type material is usually a highly limited resource (a single or few specimens, often in poor condition) and destructive sampling for DNA extraction can only be tolerated when rich specimens are available and successful output is ensured. Morphological investigations have therefore for long been the single option for identifying old specimens, and often also younger material (<10 years old) that for various reasons does not provide DNA of sufficient quality and quantity (Sohrabi et al., 2010). In addition to time since collection, also poor storage conditions, chemical treatment with mercuric chloride (mainly known to have been used on dried plants) and unfavorable drying processes may contribute to DNA degradation/inhibition in plant herbarium specimens (liverworts: Jankowiak et al., 2005; angiosperms: Staats et al., 2011; angiosperms: Lander et al., 2013), decreasing the chances for successful DNA recovery and usability in downstream processes. In recent years, increased focus on extracting and sequencing DNA from old natural history collections has led to the development of promising new approaches allowing for obtaining DNA sequences from specimens collected up to 210 years before DNA extraction (fungi: Larsson and Jacobsson, 2004; plant pathogens: Telle and Thines, 2008; angiosperms: Andreasen et al., 2009; insects: Prosser et al., 2016; algae: Suzuki et al., 2016). Such studies, however, are still few in number and restricted to a particular group of organisms. With advances in high-throughput sequencing (HTS) methods, some of the challenges (e.g., dominance of short fragments) are largely overcome (see review by Bieker and Martin, 2018). For example, Gutaker et al. (2017) managed to extract and shotgun sequence ultra-short fragments (<50 bases) of up to 180-years-old (i.e., time between collection and DNA extraction) *Arabidopsis*

specimens. The problem of destructive sampling from valuable specimens has also been addressed in recent studies. For instance, Shepherd (2017) developed a non-destructive sampling technique for extracting DNA from plant specimens collected up to 73 years ago using erasers applied to the leaf surface.

In fungi, including lichens, morphological characteristics are often of limited use for taxonomic identification because of morphological similarity between genetically distinct taxa (Slepecky and Starmer, 2009). Cryptic species (*sensu* Struck et al., 2018) are common and represent a huge challenge for taxonomic work. The use of comparative DNA sequence analyses has therefore become crucial for inferring evolutionary history as well as identifying and delimiting fungal taxa (Lumbsch and Leavitt, 2011). DNA-sequencing of a single genetic marker, such as a DNA barcode marker, is most of the time sufficient for species identification in fungi (e.g., Seifert, 2009; Leavitt et al., 2013).

So far, only a few studies report successful DNA sequencing of selected short genetic markers from historical lichen material. Sohrabi et al. (2010) managed to PCR-amplify and Sanger-sequence 760 bases of nuclear ribosomal DNA from a 75-years-old *Aspicilia* specimen, but failed with an 80-years-old one. Bendiksby et al. (2014) successfully PCR-amplified and Sanger-sequenced several markers of two 100-years-old *Staurolemma* specimens. During routine investigations on various groups of lichenized fungi, our lichen research group has experienced that PCR-amplifying and generating Sanger sequences seems to be more difficult from some taxa (e.g., tropical rainforest lichens) than from others (e.g., boreal, saxicolous crustose lichens) of the same age. For angiosperms, Bakker et al. (2016) found herbarium material from wet-tropical regions to give lower sequence assembly success rates than material from dry regions. No studies have yet addressed similar questions for lichens and it therefore remains unclear which factors are primarily responsible for DNA degradation or failed sequencing success in lichens. We have also noticed that DNA in specimens older than 50 years often is highly fragmented (<200 bases) and extracts usually have low DNA concentrations (<0.5 ng/ $\mu$ l). These challenges with short fragments and low DNA concentrations were overcome by Prosser et al. (2016) who developed a simple and rather inexpensive protocol aimed at obtaining DNA barcodes from type specimens of Lepidoptera up to 120 years old. To our knowledge, no such study has so far been done on fungi, nor has the general applicability of HTS-methods for DNA-sequencing of historical lichen specimens been explored.

In the present study, we test the two-step PCR-based HTS protocol by Prosser et al. (2016) on historical lichen specimens using the Ion Torrent sequencing platform. Our aim is to acquire high quality DNA sequence data of the mtSSU, a much used DNA marker in lichen systematics. We use two lichen species from each of four different genera/families (**Figure 1**): one growing in humid coastal areas and the other in dry inland areas. We sampled specimens of each species collected in each of seven time periods from present to about 150 years back in time. The present study is a pilot-test of the following three hypotheses: (1) Sequence reads are more readily obtained from younger than older specimens, (2) sequence reads are more readily obtained from some taxa than others given the same age, and (3) sequence



**FIGURE 1** | Lichen species targeted in this study (specimens from the 2010-period): **(A)** *Cladonia floerkeana*, **(B)** *C. gracilis*, **(C)** *Nephroma arcticum*, **(D)** *N. laevigatum*, **(E)** *Peltigera collina*, **(F)** *P. malacea*, **(G)** *Ramalina fraxinea*, and **(H)** *R. siliquosa*. Scale bar = 1 cm.

reads are more readily obtained from species adapted to dry areas than from those adapted to humid areas.

## MATERIALS AND METHODS

### Taxon Sampling

Two species from the same genus but with different distributions (i.e., distributional point of gravity in oceanic [“humid”] vs. continental [“dry”] regions) were selected from each of four different lichen families, for which comprehensive archived collections were available at either of the herbaria O or TRH. We sampled each species from approximately every 25 years from

present and to about 150 years back in time. To fulfill these criteria, we chose two representatives from the Cladoniaceae [i.e., *Cladonia floerkeana* (Fr.) Flörke and *C. gracilis* (L.) Willd.], the Nephromataceae [i.e., *Nephroma laevigatum* Ach. and *N. arcticum* (L.) Torss.], the Peltigeraceae [i.e., *Peltigera collina* (Ach.) Schrad. and *P. malacea* (Ach.) Funck], and the Ramalinaceae [i.e., *Ramalina siliquosa* (Huds.) A.L. Sm. and *R. fraxinea* (L.) Ach.; **Figure 1**]; the first representative of each genus preferring mainly humid coastal areas while the second mainly growing in dry inland habitats. All selected species are common macrolichens in Norway and belong to the same class of lichenized ascomycetes, the Lecanoromycetes; the



genera *Cladonia* and *Ramalina* belong to the order Lecanorales, *Nephroma*, and *Peltigera* to Peltigerales. We selected a healthy and rich specimen of each species from the following seven periods: 2010 (**Figure 1**), 1985, 1960, 1935, 1910, 1885, and 1860 ( $\pm 5$  years if possible, in rare cases up to  $\pm 12$  years; **Table 1**). Most of the selected specimens were collected in coastal and continental regions, respectively; in some cases, when no rich collections were available within the desired period, we selected “humid” specimens from inland areas and “dry” specimens from coastal areas (**Table 1**).

## Molecular Work

### DNA Extraction

We sampled 1–109 mg of thallus material from each specimen, depending on available material, for extracting DNA of the lichen mycobiont. Samples for periods 2010 and 1985 were extracted using the E.Z.N.A.<sup>®</sup> HP Plant DNA Mini Kit (OMEGA Bio-tek) following the manufacturer's instructions with modifications described by Bendiksbj and Timdal (2013). Samples for time periods 1960–1885 were extracted following the protocol by Werth et al. (2016) using single silica-columns with the following modifications: We grinded the samples with two 3 mm tungsten carbide beads for  $2 \times 1$  min at 20 Hz in a Mixer Mill 301 (Retsch GmbH & Co.). Instead of using the CTAB lysis buffer, we lysed the samples with the alternative buffer based on NaCl and SDS. For elution, we applied 60  $\mu$ l elution buffer (OMEGA Bio-tek; pre-warmed to 65°C) to the column and incubated the sample at 65°C for 5 min prior to centrifugation. The elution step was repeated by applying the eluate once more on the same column to increase DNA yield resulting in 50–55  $\mu$ l of DNA extract.

Samples from the 1860-period were extracted in a different lab (Clean Lab, NTNU University Museum) using the DNeasy Plant Mini Kit (QIAGEN) with the following modifications from the manual: The samples were homogenized for 2–8 min at 50 Hz on a TissueLyser LT (QIAGEN) with 1–2 steel beads. After lysis, 20  $\mu$ l of 20 mg/ml proteinase K was added to each sample followed by an incubation at 45°C for 22 h. For elution, 65  $\mu$ l AE buffer was added to each column and the samples incubated for 10 min at 37°C.

To reduce the risk of contamination, the DNA extractions of all samples collected prior to the 1960-period were carried out in a bleached workstation newly exposed to UV in a clean lab facility for sensitive samples with dedicated reagents, supplies and protective clothing. A Qubit 2.0 fluorometer (Invitrogen) with the High Sensitivity Kit (Invitrogen) was used for DNA quantification of all extracts. We checked the degree of DNA degradation by visualizing the DNA extracts on a standard 2% agarose gel.

### Primer Design and PCR Amplification

The setup for polymerase chain reactions (PCRs) followed the general protocol described in Prosser et al. (2016). While Prosser et al. (2016) designed their primers for a 658 bases fragment of the mitochondrial cytochrome oxidase I (COI), which is the preferred barcode marker for insects, we did not attempt to design primers for the fungal barcode marker, the internal transcribed spacer (ITS), as parts of this region are highly

variable. Designing universal primers for our selected species would have been a very challenging task with low anticipated success rate. In addition, Mark et al. (2016) reported challenges with obtaining the correct ITS sequence due to several different copies within one single specimen. We therefore chose to focus our efforts on a ca. 900 bases long part of the up to ca. 2,000 bases long mitochondrial ribosomal small subunit (mtSSU). This fragment, as delimited by the primers mtSSU1 and mtSSU3R (Zoller et al., 1999), is frequently used in lichen systematics and for species delimitation (Amo de Paz et al., 2011; Leavitt et al., 2015; Zhao et al., 2017; Kistenich et al., 2018). We designed a set of seven forward and seven reverse primers (**Table 2**; **Figure 2**) covering all of the 900 bases using Primer3 v. 2.3 (Untergasser et al., 2012) based on mtSSU sequences for our selected taxa or closely related taxa available from GenBank (Benson et al., 2018). Each pair of primers used in concert, amplified fragments of ca. 110–190 bases length including overlap with the adjacent target fragments. A non-complementary 10 bases tail was added to each primer's 5'-end to decrease chimeric amplifications (**Table 2**).

We modified the two-stage, nested, multiplex PCR protocol by Prosser et al. (2016) to accommodate seven primer pairs. In the first round of PCR, we combined primers F1, F3, F5, and F7 with all seven reverse primers for PCR 1.1, and the primers F2, F4, and F6 with all reverse primers for PCR 1.2 (**Figure 2A**). In the second round of PCRs, we combined each forward primer with the three subsequent reverse primers in a separate PCR run using the PCR products from PCR 1.1 and 1.2 as template (**Figure 2B**). No second round of PCR was run for samples from the 2010-period since those amplified well enough in PCR round 1. Each PCR reaction (20  $\mu$ l) contained 8.2  $\mu$ l of 10% Trehalose (Merck KGaA), 0.1  $\mu$ l of 10 mM dNTPs (GeneAmp), 2  $\mu$ l of 25 mM MgCl<sub>2</sub> (KAPA Biosystems), 0.2  $\mu$ l of each 10  $\mu$ M primer (Sigma Aldrich), 0.1  $\mu$ l of 5 U/ $\mu$ l KAPA Taq polymerase (Roche), and 2  $\mu$ l of 10 $\times$  polymerase Buffer B. Each reaction was filled up to 18  $\mu$ l with ultra-pure DEPC-treated H<sub>2</sub>O (Invitrogen), the volume depending on the number of primers used, adding 2  $\mu$ l of undiluted template. All PCRs were prepared inside a workstation for PCR set up in a clean lab for sensitive samples with dedicated reagents, supplies and protective clothing to minimize contamination. We used the same PCR programs as stated in Prosser et al. (2016), albeit with a touch-down gradient from 60 to 50°C during annealing. Products from each PCR were visualized on an agarose-gel.

To test for the presence of PCR-inhibitory substances, we performed PCR on three different dilutions (10, 100, and 1,000 $\times$ ) of each DNA extract from the 2010-period using the primers mtSSU1 and mtSSU3R (Zoller et al., 1999) and from the 1935-period and older using the primers F7 and R7 (for PCR set-up, see Kistenich et al., 2018).

### Library Preparation and Ion Torrent Sequencing

We pooled all PCR products from PCR sets 1 and 2 for each of the 56 individuals and purified the mixtures with the Illustra<sup>™</sup> ExoProStar<sup>™</sup> Clean-Up Kit (GE Healthcare) using a 10-fold enzyme dilution and incubating at 37°C for 45 min and inactivation at 80°C for 15 min. To remove any additional short molecules, we performed an AMPure<sup>®</sup>

**TABLE 1** | Specimens used in this study including voucher information, sequencing results and GenBank accession numbers of sequences generated in this study.

Species	Year	Country	County	Voucher	Herbarium #	Period	Input material (mg)	DNA concentration (ng/ $\mu$ l)	Recovered sequence		No. of reads used	Coverage			GenBank	
									Bases	%		Mean	stdev	Min		Max
<i>Cladonia floerkeana</i>	2011	Norway	Vest-Agder	J. Klepsland 11-L450	O-L-177072	2010	1	0.98	883	100.0	23,418	3,620	4,365	1	12,660	MH792863
<i>Cladonia floerkeana</i>	1987	Norway	Vest-Agder	R. Haugan 674	O-L-91628	1985	1	0.21	807	91.3	9,121	774	1,105	0	3,470	MH792864
<i>Cladonia floerkeana</i>	1964	Norway	Møre og Romsdal	H. Rui 13541	O-L-90488	1960	1	1.94	883	100.0	3,491	473	443	3	1,486	MH792865
<i>Cladonia floerkeana</i>	1935	Norway	Møre og Romsdal	K. & G. Hygen s.n.	O-L-116164	1935	4	2.13	160	18.1	21	1	3	0	10	S1
<i>Cladonia floerkeana</i>	1910	Norway	Troms	B. L ynge s.n.	O-L-90542	1910	18	0.29	541	61.2	30	3	4	0	14	MH792866
<i>Cladonia floerkeana</i>	1895	Norway	Rogaland	S.O.F. Omang s.n.	O-L-90687	1885	15	0.58	168	19.0	5	0	1	0	3	S1
<i>Cladonia floerkeana</i>	1863	Norway	Oslo	N.G. Moe s.n.	O-L-90872	1860	18	9.26	43	4.9	82	0	3	0	71	S1
<i>Cladonia gracilis</i>	2014	Norway	Sør-Trøndelag	R. Haugan WG3-0181	O-L-196047	2010	1	0.26	883	100.0	39,448	11,399	15,623	9	35,642	MH792867
<i>Cladonia gracilis</i>	1985	Norway	Sør-Trøndelag	R. Haugan 150	O-L-91632	1985	1	0.33	763	86.3	9,609	1,138	1,116	0	3,964	MH792868
<i>Cladonia gracilis</i>	1960	Norway	Sør-Trøndelag	H. Rui 18920	O-L-91400	1960	35	1.48	134	15.2	2	0	0	0	1	S1
<i>Cladonia gracilis</i>	1934	Norway	Akershus	P. Størmer s.n.	O-L-101109	1935	14	3.82	741	83.8	872	114	122	0	484	MH792869
<i>Cladonia gracilis</i>	1909	Norway	Oppland	B. L ynge s.n.	O-L-91359	1910	18	3.59	832	94.1	2,640	343	387	0	1,133	MH792870
<i>Cladonia gracilis</i>	1892	Norway	Sør-Trøndelag	F. Kiær s.n.	O-L-91331	1885	35	2.09	121	13.7	14	0	1	0	5	S1
<i>Cladonia gracilis</i>	1868	Norway	Oslo	N.G. Moe s.n.	O-L-91021	1860	83	4.94	420	47.5	20	2	3	0	11	S1
<i>Nephroma arcticum</i>	2013	Norway	Buskerud	S. Rui & E. Timdal 13199	O-L-184739	2010	1	1.43	806	100.0	16,031	2,818	2,207	1	8,973	MH792871
<i>Nephroma arcticum</i>	1984	Norway	Vest-Agder	A. Pedersen s.n.	O-L-146106	1985	1	0.29	444	55.1	760	141	238	0	608	MH792872
<i>Nephroma arcticum</i>	1960	Norway	Oppland	P. Størmer s.n.	O-L-49669	1960	35	20.40	222	27.5	23	2	4	0	17	S1
<i>Nephroma arcticum</i>	1934	Norway	Vestfold	P. Størmer s.n.	O-L-107923	1935	55	19.70	0	0.0	0	0	0	0	0	-
<i>Nephroma arcticum</i>	1910	Norway	Troms	B. L ynge s.n.	O-L-51534	1910	43	25.50	806	100.0	16,976	3,711	5,237	3	15,036	MH792873

(Continued)

TABLE 1 | Continued

Species	Year	Country	County	Voucher	Herbarium #	Period	Input material (mg)	DNA concentration (ng/ $\mu$ l)	Recovered sequence		No. of reads used	Coverage			GenBank	
									Bases	%		Mean	stdev	Min		Max
<i>Nephroma arcticum</i>	1886	Norway	Vestfold	J.M. Norman 1218	O-L-130380	1885	40	9.24	127	15.8	25	1	2	0	8	S1
<i>Nephroma arcticum</i>	1863	Norway	Akershus	N.G. Moe s.n.	O-L-49808	1860	109	3.28	137	17.0	3	0	1	0	2	S1
<i>Nephroma laevigatum</i>	2014	Norway	Sør-Trøndelag	R. Haugan 141076	O-L-203432	2010	1	6.56	780	100.0	14,650	1,917	1,449	51	4,263	MH792874
<i>Nephroma laevigatum</i>	1985	Norway	Sør-Trøndelag	R. Haugan 134	O-L-41776	1985	1	2.49	676	86.6	51,237	4,917	5,157	0	24,950	MH792875
<i>Nephroma laevigatum</i>	1960	Norway	Sør-Trøndelag	P. Størmer s.n.	O-L-41621	1960	13	18.50	45	5.8	2	0	0	0	1	S1
<i>Nephroma laevigatum</i>	1934	Norway	Hordaland	A. Roskeland s.n.	O-L-41537	1935	20	16.30	0	0.0	0	0	0	0	0	-
<i>Nephroma laevigatum</i>	1909	Norway	Hordaland	B. Lynge s.n.	O-L-41592	1910	35	11.90	199	25.5	445	27	68	0	281	S1
<i>Nephroma laevigatum</i>	1889	Norway	Oslo	F. Kiær s.n.	O-L-20415	1885	10	10.40	258	33.0	4	0	1	0	2	MH792876
<i>Nephroma laevigatum</i>	1864	Norway	Oslo	N.G. Moe s.n.	O-L-20426	1860	26	11.60	241	30.9	39	3	6	0	34	S1
<i>Peltigera collina</i>	2012	Norway	Østfold	R. Haugan 12339	O-L-190769	2010	1	2.48	835	100.0	10,379	1,671	1,488	3	6,673	MH792877
<i>Peltigera collina</i>	1984	Norway	Hordaland	J. Holtan-Hartwig 4222	O-L-48488	1985	1	0.91	785	94.0	27,455	4,863	7,194	0	19,682	MH792878
<i>Peltigera collina</i>	1965	Norway	Møre og Romsdal	L. Malme L9	O-L-13650	1960	2	28.20	709	84.9	11,538	1,966	2,859	0	7,805	MH792879
<i>Peltigera collina</i>	1934	Norway	Akershus	B. Lynge & P. Størmer s.n.	O-L-48852	1935	4	26.20	249	29.8	6	1	1	0	4	MH792880
<i>Peltigera collina</i>	1909	Norway	Akershus	B. Lynge s.n.	O-L-48862	1910	2	12.60	835	100.0	38,273	6,658	8,060	1	21,747	MH792881
<i>Peltigera collina</i>	1891	Norway	Buskerud	F. Kiær s.n.	O-L-48921	1885	2	31.20	835	100.0	63,268	10,721	13,312	47	39,260	MH792882
<i>Peltigera collina</i>	1866	Norway	Hordaland	C. Sommerfelt s.n.	O-L-48902	1860	52	1.36	229	27.4	6	1	1	0	4	S1
<i>Peltigera malecea</i>	2012	Norway	Buskerud	T.H. Hoffon 12021	O-L-205605	2010	1	1.07	831	100.0	8,663	1,499	1,052	3	3,681	MH792883
<i>Peltigera malecea</i>	1982	Norway	Hordaland	E. Tindal s.n.	O-L-100265	1985	1	0.55	779	93.7	19,432	3,123	3,737	0	11,503	MH792884
<i>Peltigera malecea</i>	1958	Norway	Buskerud	R.Y. Berg s.n.	O-L-58470	1960	4	52.00	821	98.8	4,391	738	1,095	0	3,172	MH792885

(Continued)

TABLE 1 | Continued

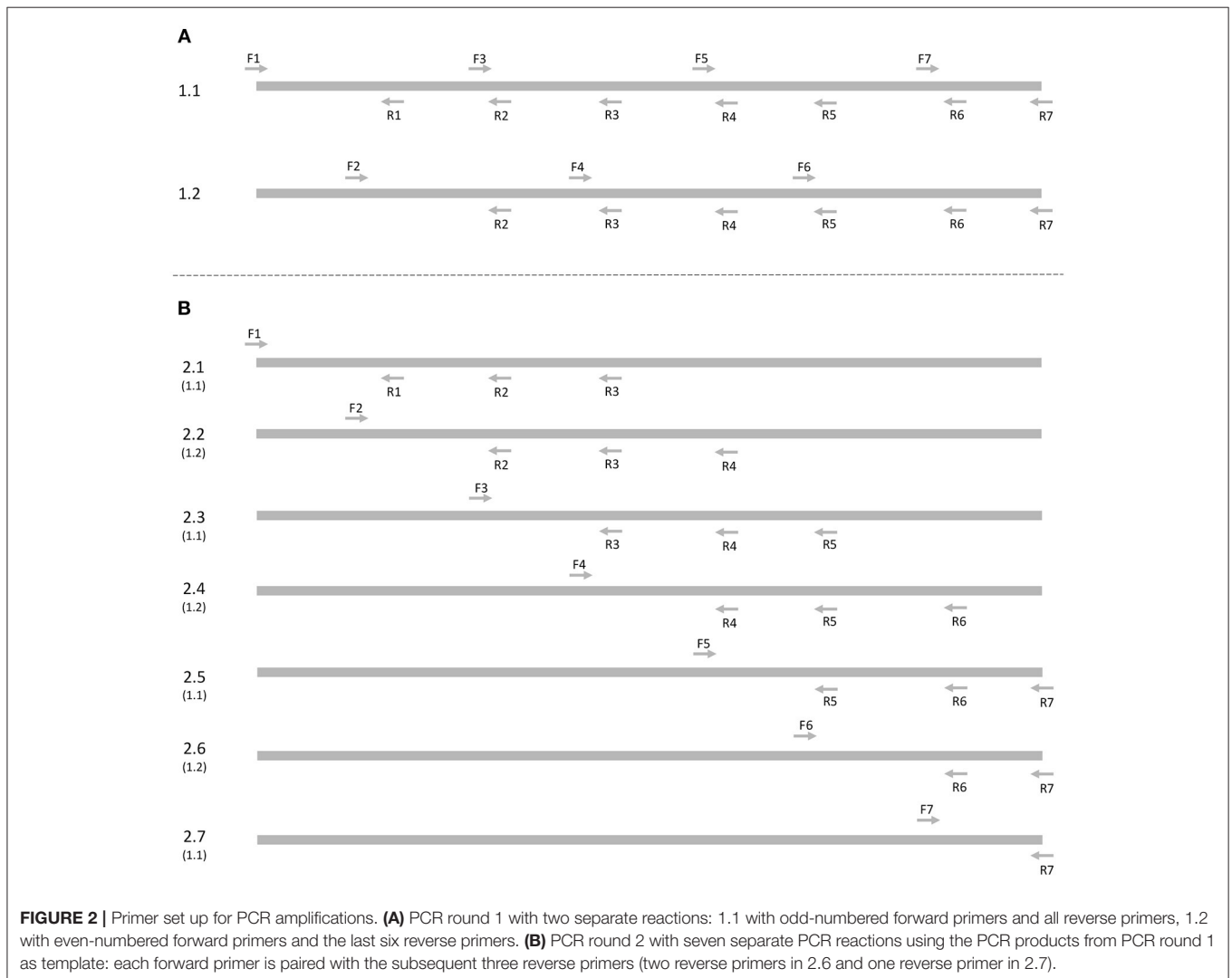
Species	Year	Country	County	Voucher	Herbarium #	Period	Input material (mg)	DNA concentration (ng/ $\mu$ l)	Recovered sequence		No. of reads used	Coverage			GenBank	
									Bases	%		Mean	stdev	Min		Max
<i>Peltigera malecea</i>	1937	Norway	Oppland	H. Rui 21789	O-L-60250	1935	4	22.00	661	79.5	144	18	0	56	MH792886	
<i>Peltigera malecea</i>	1910	Norway	Troms	B. Lyngse s.n.	O-L-58820	1910	3	21.40	831	100.0	36,583	6,896	8,519	3	22,911	MH792887
<i>Peltigera malecea</i>	1897	Norway	Troms	J.M. Norman s.n.	O-L-58828	1885	10	33.00	803	96.6	179	21	27	0	81	MH792888
<i>Peltigera malecea</i>	1868	Norway	Oslo	N.G. Moe s.n.	O-L-59116	1860	61	2.55	534	63.4	934	169	305	0	803	MH792889
<i>Ramalina fraxinea</i>	2011	Norway	Hedmark	T.H. Hofton 11360	O-L-194358	2010	1	0.35	619	77.9	9,041	2,049	2,157	0	6,660	MH792890
<i>Ramalina fraxinea</i>	1991	Norway	Akershus	R. Haugan 1921	O-L-26633	1985	1	0.24	722	90.8	36,354	8,273	10,075	0	25,622	MH792891
<i>Ramalina fraxinea</i>	1959	Norway	Akershus	H. Rui s.n.	O-L-25936	1960	17	7.64	674	84.8	17,759	4,593	6,537	0	14,964	MH792892
<i>Ramalina fraxinea</i>	1933	Norway	Østfold	A. Hagen s.n.	O-L-119012	1935	10	2.41	604	76.0	1,637	108	124	0	435	MH792893
<i>Ramalina fraxinea</i>	1908	Norway	Oslo	B. Lyngse s.n.	O-L-25918	1910	4	4.57	733	92.2	103,248	37,044	43,935	0	92,686	MH792894
<i>Ramalina fraxinea</i>	1880	Norway	Vestfold	J.M. Norman s.n.	O-L-25958	1885	5	3.99	503	63.3	213	29	36	0	101	S1
<i>Ramalina fraxinea</i>	1863	Norway	Oslo	N.G. Moe s.n.	O-L-25911	1860	70	0.66	335	42.1	13	2	3	0	9	MH792895
<i>Ramalina siliquosa</i>	2011	Norway	Vest-Agder	J. Klepsland 11-L226	O-L-176932	2010	1	0.76	745	93.7	12,908	2,968	3,070	0	9,753	MH792896
<i>Ramalina siliquosa</i>	1986	Norway	Sør-Trøndelag	R. Haugan 312	O-L-58036	1985	1	0.20	708	89.1	34,552	9,807	12,148	0	27,558	MH792897
<i>Ramalina siliquosa</i>	1960	Norway	Møre og Romsdal	S. Ahlner s.n.	O-L-57801	1960	30	2.96	744	93.6	6,752	1,228	1,732	0	4,487	MH792898
<i>Ramalina siliquosa</i>	1936	Norway	Hordaland	J. Holmboe & J. Lid s.n.	O-L-58262	1935	24	5.81	688	86.5	132	20	30	0	86	MH792899
<i>Ramalina siliquosa</i>	1912	Norway	Hordaland	T. Lillefosse s.n.	O-L-58202	1910	22	7.36	603	75.8	2,256	362	421	0	1,431	MH792900
<i>Ramalina siliquosa</i>	1880	Norway	Østfold	A. Blytt s.n.	O-L-27832	1885	11	2.40	709	89.2	17,059	4,245	6,313	0	14,683	MH792901
<i>Ramalina siliquosa</i>	1869	Norway	Aust-Agder	R. Indebetou s.n.	TRH-L-22199	1860	1	0.08	14	1.8	2	0	0	0	1	S1

S1 indicates sequences too short or fragmented for publishing in GenBank found in **Supplementary File S1**; - indicates no sequence data; stdev, standard deviation.

**TABLE 2** | Primer sequences used for the two-stage, nested multiplex PCR protocol.

Primer name	Code	Direction	Primer sequence 5'-3'	Length (bases)
NGS-mtSSU_F1	F1	Forward	<b>CTAAGGTAAC</b> AGCAGTGAGGAATHTTGGTC	30
NGS-mtSSU_F2	F2	Forward	<b>CTAAGGTAAC</b> GAYYHWRTYRAATAAARTTCTRGGT	35
NGS-mtSSU_F3	F3	Forward	<b>CTAAGGTAAC</b> CCWAGACDGYDRATMAAGCC	30
NGS-mtSSU_F4	F4	Forward	<b>CTAAGGTAAC</b> AWGGCACNRRYMWAKYGAA	30
NGS-mtSSU_F5	F5	Forward	<b>CTAAGGTAAC</b> AATKATGARTGTCATAGRTRRAKAW	36
NGS-mtSSU_F6a	F6	Forward	<b>CTAAGGTAAC</b> GAAACCAGTAGTGAAGTATGTYG	33
NGS-mtSSU_2F5	F7	Forward	<b>CTAAGGTAAC</b> GTTGCACGGCTGTCTTCA	28
NGS-mtSSU_R1a	R1	Reverse	<b>CAGAAGGAAC</b> RGVYARRNAATGTCATYRTCAW	32
NGS-mtSSU_R2a	R2	Reverse	<b>CTGCAAGTTC</b> RTAACCTAGYHAAYBWGTMC	31
NGS-mtSSU_R3a	R3	Reverse	<b>CTACATGCTC</b> TACAGTTATYACATARGRRGATGC	33
NGS-mtSSU_R4	R4	Reverse	<b>TACCAAGATC</b> TGGARTGCTTACACTTTCATT	32
NGS-mtSSU_R5	R5	Reverse	<b>CAGAAGGAAC</b> TDYGYGKRTYATCRAATTA	29
NGS-mtSSU_2R4a	R6	Reverse	<b>TACCAAGATC</b> GGADYTAACCWAADYCTCRGAC	33
NGS-mtSSU_R7	R7	Reverse	<b>GACTTAGCTA</b> ATGTGGCACGTCTATAGCCC	30

The non-complementary 10 bases tail is marked in bold.





XP (Agencourt Biosciences Corporation) paramagnetic bead purification following the manufacturer's instructions. We used a 1:1.4 volume ratio of PCR product:beads to remove fragments shorter than approximately 100 bases. The products were eluted from the beads with 50  $\mu$ l 10 mM Tris-HCl buffer.

The Ion Torrent library preparation was performed using the NEBNext<sup>®</sup> E6270-kit (New England Biolabs) with these modifications to the manufacturer's instructions: Ion Xpress<sup>™</sup> barcoded adapters (Thermo Fisher Scientific) were diluted 1:40 to better match the low DNA input amount. The size selection step 1.3 in the protocol was omitted. In step 1.4, bead cleanup was performed using a 1:1.1 volume ratio for library:beads. The library amplification was performed using 12 cycles and a final Ampure clean up using 1:0.9 volume ratio of library:beads.

We quantified DNA concentrations on a Qubit 2.0 fluorometer (Invitrogen) and visualized fragments lengths on a Fragment Analyzer<sup>™</sup> (Advanced Analytical) using the DNF488 kit to optimize input amounts for selected samples at various steps, such as after pooling all PCR products from each individual, after library preparation and after pooling the libraries for each chip. Samples were normalized, pooled and diluted to 17.5 pM (chip 1, samples 1–30) and 15 pM (chip 2, samples 31–56). Template preparation and sequencing was performed using a Hi-Q View Chef and sequencing kit (A29902 and A30044, respectively) and two 318 v2 chips on an Ion Torrent PGM (Thermo Fisher Scientific) using 500 flows per chip.

### Sanger Sequencing

For comparison, we also analyzed our samples using standard protocols for PCR amplification and Sanger sequencing of the ca. 900 bases long mtSSU region using the primers mtSSU1 and mtSSU3R (Zoller et al., 1999) as described in Kistenich et al. (2018). All PCR-products were sequenced irrespective of showing visible bands on the gel or not.

### Sequence Assembly

For an initial overview, we investigated the raw reads from both chips with the Torrent Suite v. 5.8.0 (Thermo Fisher Scientific) and removed the adapters to check the mean sequence quality using FastQC v. 0.11.2 (Andrews, 2010). Afterwards, sequence reads were analyzed using the software Geneious R9 (Kearse et al., 2012) including various plugins. We demultiplexed the reads according to the respective indexes and removed duplicate reads to facilitate sequence analysis using Dedupe of the BBTools package v. 35.82 (Bushnell, 2015). Then, we applied several quality trimming steps, such as removal of PCR primers and low quality reads and ends using BBDuk (BBTools v. 35.82, Bushnell, 2015; minimum quality set to 5, minimum read length set to 8 bases) combined with the Trim option in Geneious (error probability limit set to 0.05). The remaining reads were mapped to species-specific reference sequences using the Geneious Read Mapper (up to five iterations, high sensitivity). In cases where we suspected a high amount of chimeric sequences, we cleaned the respective dataset using UCHIME (Edgar et al., 2011) and

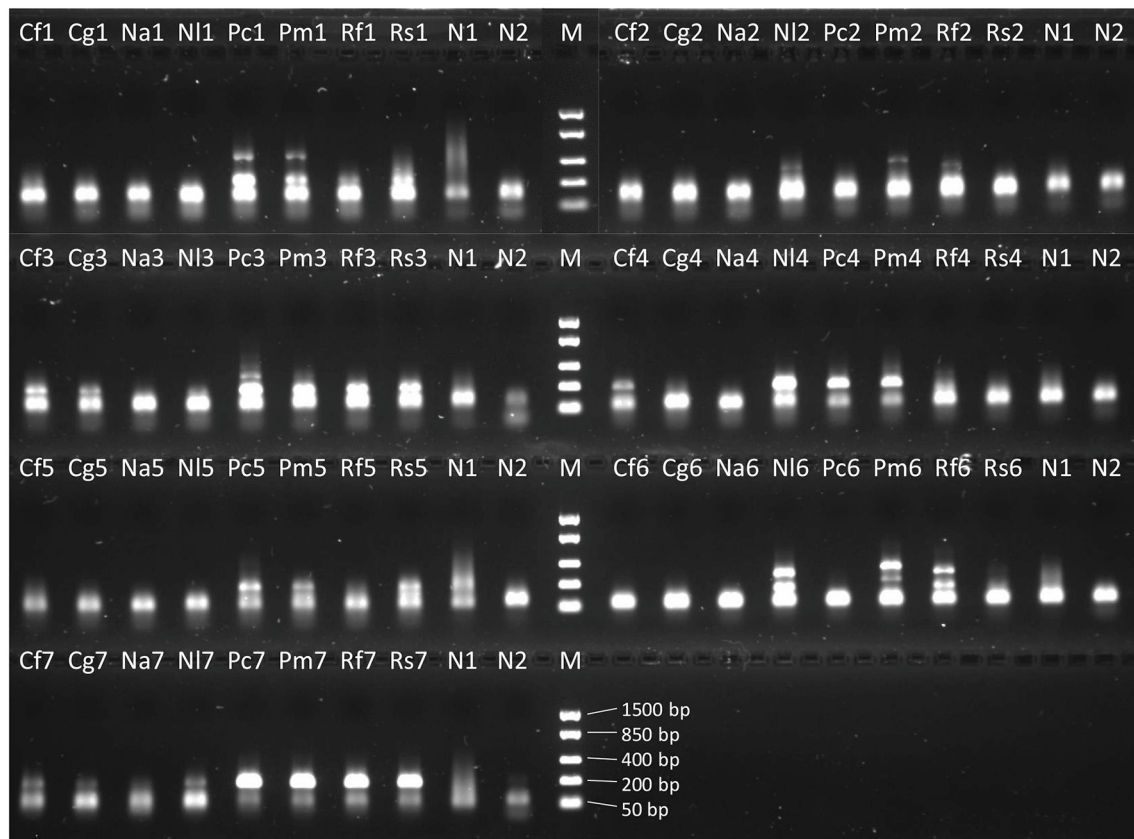
mapped the reads against the reference sequence once more. We carefully inspected the consensus sequence for each specimen, corrected obvious sequencing mistakes manually and removed contaminant sequence reads. Sequencing success was measured as percentage of sequence length recovered compared to the full reference sequence.

For sequences produced by Sanger sequencing, we first trimmed the primer sequences and low quality-ends and then assembled the contigs in Geneious R9 (Kearse et al., 2012).

### Statistical Analysis

The statistical analysis proceeded in two steps. In the first step, we identified two variables that served as indicators of DNA quality. Secondly, we used these variables as response variables in generalized linear models (GLM; McCullagh and Nelder, 1989) with identity link and normal errors (i.e., ANOVA and ANCOVA). Predictor variables were Age (2018—year of collection), Genus (factor variable with four levels), Species (factor variable with eight levels, nested within Genus), and Moisture (factor variable with two levels). For each response variable, models were built by forward selection of predictor variables, at each step including variables that contributed independently to explain variation in the response at the Bonferroni-corrected  $\alpha = 0.05$  level (cf. Legendre and Legendre, 2012).

Basically, seven primary variables were recorded to characterize DNA quality: relative sequence length (SeqLFr); number of reads (NoReads); read coverage (Cov), for each of the 56 samples (4 genera  $\times$  2 species  $\times$  7 time-points) represented by the minimum (CovMin), the maximum (CovMax), average (CovAve) and standard deviation of read coverage; and, finally, the concentration of DNA in the analyzed tissue (DNACon). Inspection of frequency distributions revealed strong right-skewness in all primary DNA quality variables except SeqLFr. Furthermore, CovMin was omitted from further analyses because a total of 45 out of 56 recorded values were zeroes. All right-skewed variables were  $\log(x + 1)$ -transformed before further analyses, resulting in rather uniformly distributed variables. The three remaining InCov variables were very strongly correlated (Pearson's  $r$ :  $|r| > 0.98$ ,  $p < 0.0001$ ,  $n = 56$ ) and InCovAvg was selected to represent the read coverage aspect of DNA quality in further analyses. DNA concentration was unrelated to the other three variables (Pearson's  $r$ :  $|r| < 0.17$ ,  $p > 0.20$ ,  $n = 56$ ), while the other three variables were rather strongly correlated (Pearson's  $r$ :  $|r| > 0.89$ ,  $p < 0.0001$ ,  $n = 56$ ). We therefore used InDNACon as a separate response variable, while the three other DNA quality variables were concentrated into one composite DNA quality variable (referred to as PCA-axis 1) by principal component analysis (PCA; Pearson, 1901; Legendre and Legendre, 2012) of the correlation matrix, using Euclidean biplot scaling of axes (Oksanen et al., 2016) to maximize the fit between ordination scores and between-observation variation in SeqLFr, InNoReads, and InCovAvg. All analyses were performed using R v. 2.3.2 (R Development Core Team., 2018); package vegan v. 2.4.0 (Oksanen et al., 2016) was used for ordination analyses.



**FIGURE 3** | Image of gel visualization of PCR products from the 1985-samples for the seven primer combinations of PCR round 2 (**Figure 2B**: 1–7). Cf, *Cladonia floerkeana*; Cg, *C. gracilis*; Na, *Nephroma arcticum*; NI, *N. laevigatum*; Pc, *Peltigera collina*; Pm, *P. malacea*; Rf, *Ramalina fraxinea*; Rs, *R. siliquosa*; N1, negative control from PCR round 1 run with PCR round 2; N2, negative control from PCR round 2; M, marker.

## RESULTS

### Amplification Success

The concentration of the DNA extracts ranged from 0.08 ng/ $\mu$ l up to 52 ng/ $\mu$ l with relatively higher values for *Nephroma* (mean 11.3 ng/ $\mu$ l) and *Peltigera* (mean 16.8 ng/ $\mu$ l) and low values for *Cladonia* (mean 2.3 ng/ $\mu$ l) and *Ramalina* (mean 2.8 ng/ $\mu$ l; **Table 1**). DNA extracts from all periods showed a smear on the agarose gel (not shown) indicating DNA degradation. For many samples, including some from the 1860-period, the smear indicated also the presence of long fragments (>1500 bases), but from the 1960-period and older, most DNA fragments were shorter than 200 bases and often even shorter than 50 bases.

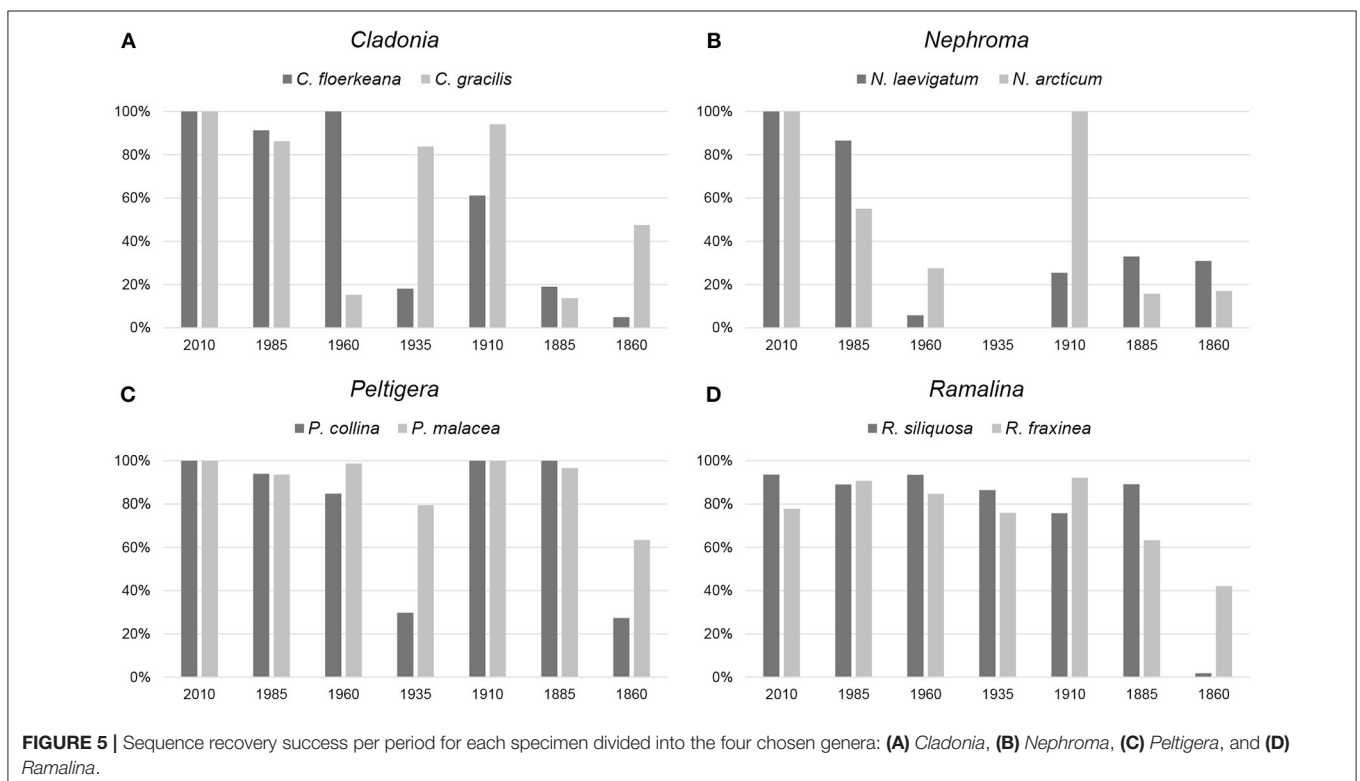
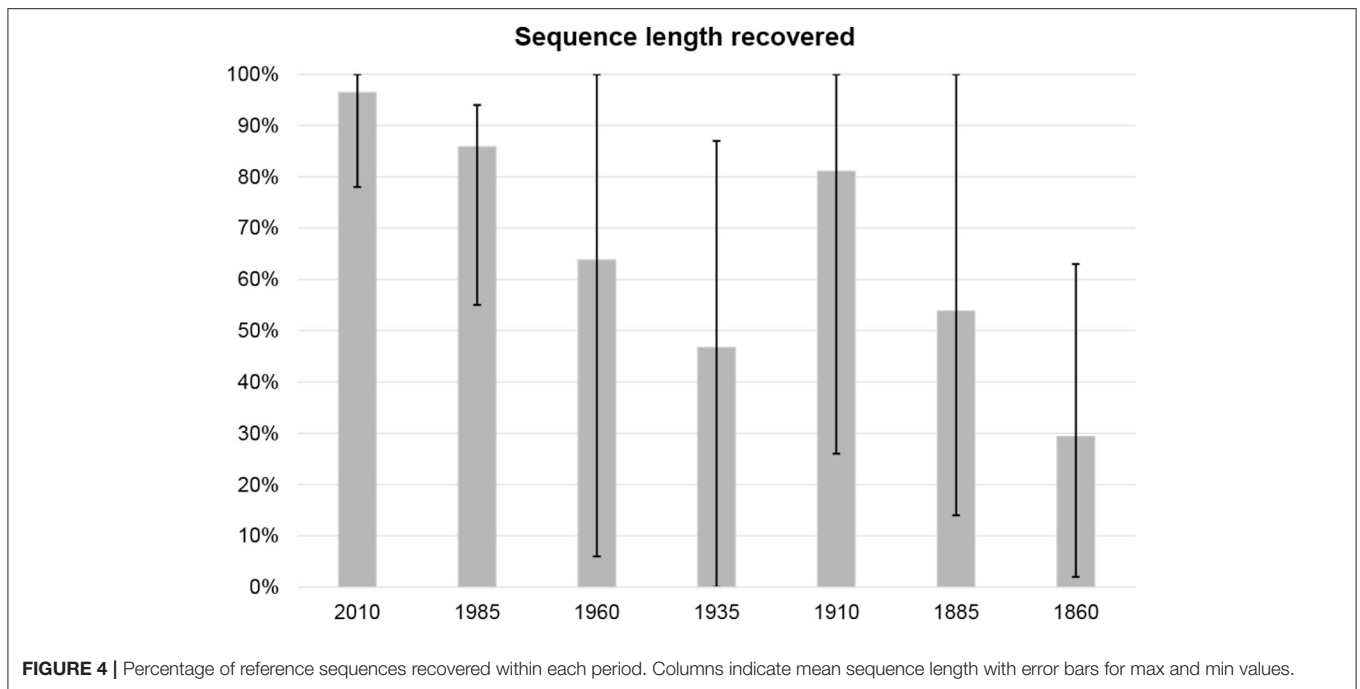
We could detect visible bands in PCR 1 and 2 mainly in samples from 2010 and 1985 (**Figure 3**). Occasionally, weak to strong bands could be observed in specimens from other periods as well, mostly in *Peltigera* specimens. The majority of PCR reactions showed no products at all. Instead, strong bands around 50–75 bases were present, also in the negative controls (**Figure 3**). These strong, short bands (presumably primer dimers) were stronger in the second PCR round (**Figure 3**).

DNA concentrations after library preparation ranged from <0.05 to 29.7 ng/ $\mu$ l per specimen. Visible bands

during the second PCR amplification generally resulted in successful sequence recovery, but also non-visible PCR products produced correct sequence reads. Missing sequence coverage was frequently found around base pair position 120–220, corresponding to the PCR fragment amplified by primers F2 and R2, and around position 520–570(–720), corresponding to the longest PCR fragment amplified by primers F5 and R5/R6.

The gel image (not shown) of the dilution series for the samples from the 2010-period did not show any increase in PCR product with increased dilution. For the samples from the 1935-period and older, the test showed varying results: For *Peltigera* and *Ramalina* species, PCR products did not increase with dilution, while for *Cladonia* and *Nephroma* species, the intensity of bands increased in diluted extracts compared to the undiluted ones. For these species, a 100 $\times$  dilution showed the best results. All specimens of each species from different periods behaved similarly in performance.

For the Sanger sequencing approach, strong PCR bands could be observed for all samples from the 2010-period apart from *Ramalina siliquosa*. Strong bands could also be detected for several *Peltigera* samples from all other periods except for the 1935-period.



## Sequencing Success

Sequencing on the Ion Torrent PGM produced 6.8 million reads (median read length 202 bases) for chip 1 and 5.2 million reads (median read length 186 bases) for chip 2. Raw reads, with the adapters trimmed, had a mean sequence quality (Phred score) of

Q29. About 5.7% of the generated reads could not be assigned to any barcode. Contaminant sequence reads were largely found to belong to the lichen genera *Umbilicaria* and *Miriiquidica*, rarely to other fungal genera, such as *Aspergillus*. We recovered mtSSU sequences of varying length for 54 of the 56 specimens

investigated (Table 1; Figures 4, 5; Supplementary File S1). The targeted sequence length was 883 bases for each *Cladonia* species, 806 bases for *Nephroma arcticum*, 780 bases for *N. laevigatum*, 835 bases for *Peltigera collina*, 831 bases for *P. malacea*, 794 bases for *Ramalina fraxinea* and 795 bases for *R. siliquosa*. Recovery success was highest for the youngest and lowest for the oldest specimens (Figure 4). The number of reads used for mapping ranged from 2 to >100,000 resulting in a mean sequence coverage of up to 37,000 × per specimen (Table 1). For two specimens, *Nephroma arcticum* and *N. laevigatum* from the 1935-period, no good-quality sequence reads could be recovered. For an additional five specimens, *N. laevigatum* from the 1960-period, *C. gracilis* and *N. arcticum* from the 1885-period and *C. floerkeana* and *R. siliquosa* from the 1860-period, only short or strongly fragmented sequences of <130 bases length could be recovered (Table 1). For 11 specimens, the full sequence length was recovered, including three specimens from the 1910-period and one from the 1885-period (Table 1). In all, we recovered >75% of the total sequence length for 34 of the 56 specimens. The seven generated sequences from the different periods for each species showed up to six intraspecific variable sites for *C. floerkeana*, seven for *C. gracilis*, four for *N. arcticum*, two for *N. laevigatum*, one for *P. collina*, one for *P. malacea*, three for *R. fraxinea*, and six for *R. siliquosa*. Specimens of *Peltigera* gave the highest sequence recovery success (mean = 83%), followed by *Ramalina* (mean = 75%) and *Cladonia* (mean = 60%), while specimens of *Nephroma* performed the least well (mean = 43%; 5). Coastal species had a slightly lower sequencing success (62%) than inland species (68%).

Sanger sequencing of regular one-step PCR products produced 19 sequences corresponding to the samples showing visible bands on the gel. Four of those sequences, including all from the 1860-period, were contaminated with either lichenized or unlichenized fungi according to BLAST searches at NCBI. The 15 remaining sequences had a length of 506–883 bases (i.e., 61–100% of target sequence; Table 3; Supplementary File S2). Full sequences could be generated for all *Cladonia* and *Nephroma* samples plus *P. malacea* from the 2010-period, *N. laevigatum* and *P. malacea* from the 1985-period, and for *P. malacea* from the 1960 and 1910-periods (Table 3; Supplementary File S2). The oldest specimen, for which a sequence could be generated, was *P. collina* from the 1885-period with a 703 bases long sequence (Supplementary File S2). Sanger sequences of *N. laevigatum* (1985) and *P. malacea* (1985 and 1960) were slightly longer than sequences generated by the Ion Torrent protocol (Table 3). Sanger sequencing trace files showed an overall decline in quality with increased time since collection, in particular from the 1985-period and older.

## Statistical Analysis

Axis 1 in the PCA ordination of relative sequence length (SeqLFr), number of reads (lnNoReads) and mean coverage (lnCovAvg) explained 95.3% of the total variation in the set of these three variables (after standardization to zero mean and unit variance), while only 4.2% was explained on axis 2 (Figure 6). PCA-axis 1 could therefore confidently be used as a composite variable that concentrated the three single variables into one

**TABLE 3** | Specimens recovered with Sanger sequencing including length of sequences.

Species	Period	Age (years)	Recovered sequence	
			Bases	%
<i>Cladonia floerkeana</i>	2010	7	883	100
<i>Cladonia gracilis</i>	2010	4	883	100
<i>Nephroma arcticum</i>	2010	5	806	100
<i>Nephroma laevigatum</i>	2010	4	780	100
<i>Peltigera collina</i>	2010	6	711	85.1
<i>Peltigera malacea</i>	2010	6	831	100
<i>Ramalina fraxinea</i>	2010	7	Contaminated	
<i>Nephroma laevigatum</i>	1985	33	<b>780</b>	<b>100</b>
<i>Peltigera collina</i>	1985	34	683	81.8
<i>Peltigera malacea</i>	1985	36	<b>831</b>	<b>100</b>
<i>Cladonia floerkeana</i>	1960	54	588	66.5
<i>Peltigera collina</i>	1960	53	562	67.3
<i>Peltigera malacea</i>	1960	60	<b>831</b>	<b>100</b>
<i>Peltigera collina</i>	1910	109	506	60.6
<i>Peltigera malacea</i>	1910	108	831	100
<i>Peltigera collina</i>	1885	127	703	84.2
<i>Cladonia gracilis</i>	1860	150	Contaminated	
<i>Peltigera malacea</i>	1860	150	Contaminated	
<i>Ramalina fraxinea</i>	1860	155	Contaminated	

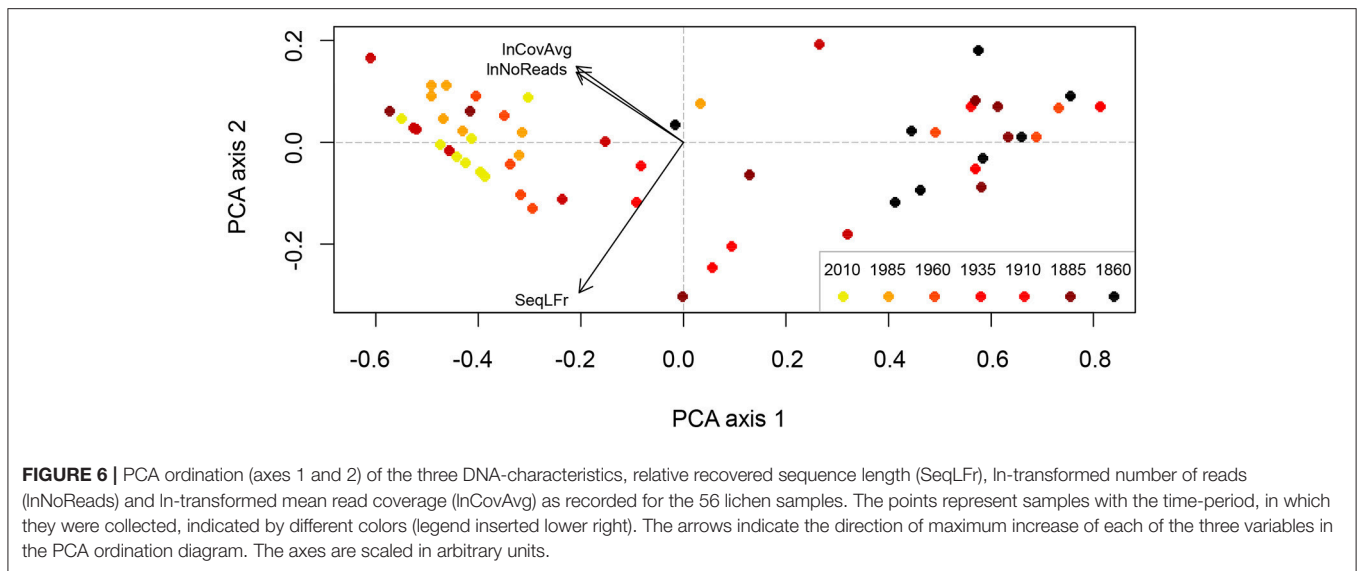
Values marked in bold show higher sequencing success than with the Ion Torrent protocol.

“DNA quality variable.” PCA-axis 1 was strongly related to Age (29.6% of the variation explained;  $p < 0.0001$ ; Table 4). Also Genus explained significant variation along PCA-axis 1 (16.5%;  $p = 0.0237$ ; Table 4), while the variations explained by Species and Moisture were not significant ( $p > 0.2$ ; Table 4). The PCA ordination diagram (Figure 6) revealed high DNA recovery success (high DNA quality) for samples collected <50 years ago (to the left), while samples collected more than 50 years ago tended to cluster on the right-hand side in the diagram. Figure 6 also shows that DNA quality cannot be precisely predicted from Age; old material with high DNA quality (dark dots to the left) and new material with low DNA quality (light-colored dots to the right) both occurred to the far left. Because the factorial design of the study makes Genus and Age virtually uncorrelated, Genus explained 22.3% of the variation not explained by Age ( $p = 0.0038$ ) and the interaction between Genus and Age was insignificant. Genus affiliation explained a larger fraction of variation (30.7%;  $p = 0.0002$ ) in DNA concentration than did Age (9.3%;  $p = 0.0223$ ; Table 4). While each of the three DNA quality variables SeqLFr, lnNoReads, and lnCovAvg were uncorrelated with lnDNACon in the total material, sequence length and DNA concentration were significantly correlated in the subset of observations with age >100 years (Pearson’s  $r = 0.4766$ ,  $p = 0.0185$ ,  $n = 24$ ).

## DISCUSSION

In this study, we aimed at sequencing a DNA fragment of about 900 bases of the mtSSU from 56 lichen specimens of varying age





**FIGURE 6 |** PCA ordination (axes 1 and 2) of the three DNA-characteristics, relative recovered sequence length (SeqLFr), In-transformed number of reads (InNoReads) and In-transformed mean read coverage (InCovAvg) as recorded for the 56 lichen samples. The points represent samples with the time-period, in which they were collected, indicated by different colors (legend inserted lower right). The arrows indicate the direction of maximum increase of each of the three variables in the PCA ordination diagram. The axes are scaled in arbitrary units.

**TABLE 4 |** GLM modeling of DNA quality variables “PCA-axis 1” [a composite variable that expresses relative sequence length (SeqLFr), number of reads (NoReads) and average read coverage (CovAvg)] and the logarithm of tissue DNA concentration (“lnDNACon”) as a function of the predictor variables genus (Gen), species in genus (Spec), moisture (Mois) and tissue age (Age).

Response variable	Model	Predictor(s)	Total variation	Explained variation	df	F	p
PCA-axis 1	1a	Factor(Gen)	12.230	2.0184	3	3.424	<b>0.0237</b>
	1b	Factor(Spec)	12.230	2.0599	7	1.388	0.2321
	1c	Factor(Mois)	12.230	0.0396	1	0.175	0.6770
	1d	<b>Age</b>	12.230	3.6164	1	22.659	<b>&lt;0.0001</b>
	2a	[Age+] <b>factor(Gen)</b>	8.614	1.9603	3	5.054	<b>0.0038</b>
	3a	[Age + factor(Gen)+] Age:factor(Gen)	6.654	0.2390	3	0.601	0.6178
	lnDNACon	1a	<b>Factor(Gen)</b>	66.920	20.568	3	7.692
1b		Factor(Spec)	66.920	21.112	7	3.161	<b>0.0079</b>
1c		Factor(Mois)	66.920	0.0007	1	0.000	0.9809
1d		Age	66.920	6.2235	1	5.537	<b>0.0223</b>
2b		[Factor(Gen)+] factor(Spec)	46.352	0.5438	4	0.143	0.9655
2d		[Factor(Gen)+] <b>Age</b>	46.352	6.2438	1	7.940	<b>0.0069</b>
3d		[Factor(Gen)+Age+] factor(Gen):Age	40.108	0.5276	3	0.213	0.8867

Properties of nested models are shown for each of the two response variables. Models 1# are single-predictor models tested against the null model, Models 2# are two-variable models for individually significant predictors tested against the nested Model 1#. Model 3a is the model in which the interaction between two significant predictors is also included. For each model, the total variation (for Models 2# and 3a, the residual variation in the corresponding, simpler, nested model is given), the explained variation, the degrees of freedom for the added predictor as well as F and p statistics are given. Significant p-values ( $\alpha = 0.05$ ) are marked in bold.

up to 155 years since collection. We applied the two-step PCR HTS protocol of Prosser et al. (2016) to obtain DNA fragments of different lengths that were sequenced on an Ion Torrent PGM and compared the results to standard Sanger-sequenced samples. Sanger sequences could only be obtained for 15 specimens, mainly from young specimens. In contrast, we obtained Ion Torrent sequences from 54 of the 56 specimens, and for 34 of these specimens, more than 75% of the target sequence could be recovered, including specimens collected up to 138 years ago. This pilot study shows that the approach by Prosser et al. (2016) is successful in generating DNA sequences of historical lichen material when Sanger sequencing fails.

## Sequencing Success

Using the HTS protocol of Prosser et al. (2016), we obtained the entire ca. 900 bases long mtSSU target sequence from lichen specimens collected up to 127 years ago (Table 1; Figure 4). Also shorter sequences obtained from specimens up to 150 years old (Table 1; Figure 4) contained enough information for species identification. However, sequencing success for specimens from the 1860-period was greatly reduced compared with those from the 1885-period (29 vs. 54% average sequence length recovered, respectively). We found generally lower sequence length recovery from both the 1960- and 1935-periods with 64 and 47% success, respectively (Figure 4). In contrast, the specimens from



the 1910-period performed extremely well with 81% success (Figure 4).

Using our standard protocols for PCR amplification (i.e., one-step) and Sanger-sequencing of lichens, we obtained correct DNA sequences from 15 samples, mainly from the most recently collected specimens (Table 3; Supplementary File S2). Most of these sequences were shorter or equally long as the Ion Torrent sequences. Three Sanger sequences, however, resulted in longer sequence lengths than the respective Ion Torrent sequences. The fact that we were able to recover 703 bases of the 127-years-old *P. collina* specimen by standard protocols shows that also one-step PCR and Sanger sequencing can be successful even for specimens more than 100 years old. We therefore recommend testing Sanger sequencing on old samples first before using the Ion Torrent approach. Overall, however, substantially more sequence information was obtained by applying the Ion Torrent protocol.

Consensus sequences from the Ion Torrent approach showed overall better quality than those generated by Sanger sequencing. Some sequence contigs from Sanger sequencing showed missing bases at the start or end after the primer binding-site compared to the Ion Torrent and reference sequences and had to be corrected manually. Other contigs showed a high number of ambiguities due to low trace file quality and required detailed manual inspection and correction. Using the Ion Torrent protocol, these issues were reduced by increased read coverage.

There are probably several reasons for why some specimens failed to recover the full-length sequence from all seven periods. First, it has been shown that high temperatures (>42°C) and extended drying periods of freshly collected plant specimens have a strong negative impact on DNA quality and may be a more important factor causing DNA degradation than age (Taylor and Swann, 1994; Erkens et al., 2008; Staats et al., 2011; Drábková, 2014). We expect that the same factors decrease DNA quality also in lichens, but the information about how the samples were dried after collection is very limited.

Second, in old herbaria without air conditioning, fluctuations of temperature and humidity levels are common and may contribute to accelerated degradation of DNA (Adams, 2011). Unfortunately, the preservation and storage methods used are largely unknown, in particular for specimens from the 1960s and older. In addition, preserved specimens are routinely frozen for several days upon entering a new herbarium. Also the rising frequency of between herbarium-loans due to increased use of natural history collections in research may accelerate DNA degradation. However, Doyle and Dickson (1987) reported that multiple freezing-thawing cycles do not seem to affect DNA quality. We found no newer study investigating the effect of freezing-thawing cycles on DNA, despite frequent claims in the literature that this is undesirable due to DNA degradation.

A third reason for reduced sequencing success might be the presence of PCR-inhibitory substances in the extracted DNA. Many lichens contain various amounts of secondary metabolite compounds (Culberson and Culberson, 2001; Elix, 2014). These lichen substances have not been shown to inhibit PCR amplification, but polysaccharides and terpenoids may do so (Armaleo and Clerc, 1995; Ekman, 1999). The genera

*Nephroma* and *Peltigera* are known to contain high amounts of terpenoids. As we received poor sequencing results for *Nephroma* in particular (43%), we tested for the presence of PCR-inhibitory substances by running a PCR on three dilutions of all DNA extracts from the 2010-samples and also of the samples from the 1935-period and older, as we expected that old herbarium samples could have accumulated PCR-inhibitory substances. Our result that amplification success was improved when extracts were diluted 100-fold indicate the presence of inhibitory substances in DNA extracts from old specimens of *Cladonia* and *Nephroma*. None of the 2010-period extracts showed an increase in PCR product with increased dilution; neither did old samples of *Peltigera* or *Ramalina*. Presence of PCR-inhibitory substances may therefore be the reason for the poor sequencing success of *Nephroma* specimens, as this test was done post-sequencing.

Fourth, the DNA extraction method strongly influences DNA yield (Rohland and Hofreiter, 2007; Särkinen et al., 2012). As expected, the specimens from the 1860-period (i.e., the oldest) showed the poorest performance (29% sequencing success). Apart from being older, the specimens from the 1860-period were extracted as part of another unpublished study using a different DNA extraction kit and protocol. This protocol was not tailored to the sensitive extraction of the mycobiont's DNA and may, at least partially, have contributed to the poorer DNA quality.

Finally, herbarium material of vascular plants has traditionally been treated with chemical preservatives (i.e., fungicides and insecticides), such as mercuric chloride (Hall, 1988), which appear to reduce the usability of the extracted DNA (Do and Drábková, 2018; own experience). We are not aware of any similar chemical treatments for the preservation of lichens in our herbaria except for the single use of gaseous insecticides in the 1990s, but such information was not recorded before the 1980s, though.

Most likely, however, the varying sequencing success was caused by a combination of the factors mentioned above; perhaps with different relative importance for different samples. Moreover, in this pilot study, we merely used a single specimen per species per period ( $n = 56$ ). Increasing the sample size would give more robust results. Moreover, it is our experience that PCR amplification is a largely unpredictable process when the DNA extracts are of poor quality as is expected for our historical samples. Running multiple PCR reactions in parallel may result in single reactions being successful (own experience). Often, however, one does not have sufficient amounts of extracted DNA to perform this parallel-PCR test when working with old and precious samples.

We used different amounts of thallus input material for DNA extraction, varying between 1 and 109 mg, depending on the availability of material. Although one might expect the amount of input material to affect the output of DNA (and subsequently the sequencing success), we could not find a clear relationship between the amounts of input and output. For instance, we retrieved full-length sequences from specimens of the 1910-period with as little as 2 mg input material and with as much as 43 mg (Table 1; Figure 5). The fact that even small amounts of input material allow for generation of full-length sequences

from more than 100-year-old specimens is very good news for the value of precious herbarium specimens, such as type material, opening for successful analyses of DNA without the destroying much material.

We were not able to recover full-length sequences for any of the *Ramalina* specimens. Sanger sequencing failed completely, whereas a 47–48 bases long fragment always failed to assemble in the Ion Torrent approach. Even though parts of this fragment were sequenced, the middle part is always missing; a puzzling result as this region is rather conserved and with few variable sites among the selected eight species. We designed universal primers based on eight species from four distantly related lichen families. Thus, one explanation for the systematically missing sequences might be a poor annealing-property to these particular *Ramalina* species of the designed primers F5 and R5. In general, however, our degenerate primers performed well for all eight species. Studies comparing different HTS platforms have reported that the Ion Torrent PGM often performs less well in recovering the whole target sequence than other platforms (Loman et al., 2012; Quail et al., 2012). Even though the sequencing chemistry and technology has improved since 2012, runs on different sequencing platforms should be compared to explore their significance for sequencing success of historical lichen samples.

## Hypothesis Testing

As expected, we found a highly significant correlation between the age of specimens and sequencing success ( $p < 0.0001$ ; **Figure 6**; **Table 4**), supporting our first hypothesis that quality DNA and sequence reads are more readily obtained from younger than older specimens. Erkens et al. (2008) reported a  $\sim 1\%$  decrease in extractable amounts of DNA from plant herbarium specimens per year. We do not know about any similar estimates of yearly decrease in DNA in lichens, and our results do not support the existence of such a pattern. In our current data, degradation of DNA extracts was similar for all samples throughout all periods with the most recently collected samples showing somewhat less degradation. In samples from the 1960-period and older, most DNA fragments were only 50 bases long, but there were also some long fragments ( $>1500$  bases) faintly visible on the agarose gel. Measured DNA concentrations was  $>0.1$  ng/ $\mu$ l for almost all DNA extracts, even for the older ones (**Table 1**). When comparing all samples from every period, we could neither detect a correlation between amount of input material and DNA concentration nor between sequencing success and DNA concentration (**Table 4**). For samples from the 1910-period and older, however, we could detect a weak positive correlation between sequencing success and DNA concentration ( $p = 0.0185$ ) indicating that sequencing success might increase with increasing DNA concentrations in old samples. Hence, special focus should be placed on the DNA extraction process when handling old material. DNA extracted from lichens usually consists of a mixture of various organisms. Therefore, the extract does not only contain the mycobiont's DNA, but most likely also contaminant DNA from the photobiont, basidiomycetes (Spribille et al., 2016) and possibly other unknown symbionts, epibionts, or endophytes. Hence, we do not know the proportion of mycobiont DNA in our DNA extracts. It is possible, therefore,

that the mycobiont DNA represents only a fraction of the total DNA concentration measured and that the long fragments observed on the gel result could result from contaminants. Still, the amount and quality of mycobiont DNA in our specimens was mostly sufficient to generate reads, even though few in number for specimens from the 1860-period (**Table 1**; **Figure 4**). This fact indicates that extracting DNA of sufficient quality from even older lichen specimens should be feasible and ought to be explored further.

We found that the different genera did not perform equally well in PCR amplification and sequence recovery (**Figure 5**). The statistical analyses indicate a significant difference between sequencing success and genus affiliation ( $p < 0.004$ ; **Table 4**), but not species affiliation (**Table 4**). The average sequence recovery for the *Nephroma* species was only 43%, about half the recovery observed for the *Peltigera* species (83%). As we were also able to produce  $>700$  bases long Sanger sequences of various old *Peltigera* samples, DNA from this genus seemed to be in a particularly good condition with long fragments. *Peltigera* and *Nephroma* are morphologically similar with big lobes and cyanobacteria as photobionts (for *N. arcticum* only in cephalodia) and occur in similar habitats. The success rate for sequencing the ITS barcode marker of fresh *Nephroma* specimens has been high in the Norwegian Barcode of Life project (OLICH), suggesting that the low sequencing success in the present study may either be due to the low initial sample size or to the presence of PCR-inhibitory substances in old specimens (see above). The *Ramalina* species performed well with 75% recovery success followed by *Cladonia* with 60%. For ITS in the OLICH project, we experienced higher success for *Cladonia* (ca. 70%) than *Ramalina* (ca. 60%), but these figures are based on a broader specter of species from both genera, but also younger specimens than in the present study. When comparing specimens from the two most recent periods only (i.e., the 2010- and 1985-periods), average sequencing success is higher with 94% for *Cladonia*, 85% for *Nephroma*, 97% for *Peltigera* and 88% for *Ramalina*, outperforming the general OLICH success. Still, sequencing success seems to be dependent on the target genus. When using DNA concentration as response variable in our GLM analyses, we found a significant effect of genus affiliation (and in this case also of species affiliation; **Table 4**), that was even stronger than the effect of age ( $p < 0.03$ ; **Table 4**). Thus, we cannot reject our second hypothesis that quality DNA and sequence reads are more readily obtained from some taxa than others given that age of the material is kept constant.

Our general experience when working with lichens from humid tropical regions is that they become difficult to obtain DNA sequences from shortly after collection; often, longer ( $>ca.$  300 bases) Sanger sequences cannot be obtained after only a few months of storage. In contrast, we do not experience this difficulty with taxa adapted to the less humid boreal regions. We hypothesized that lichens adapted to more arid conditions are better equipped for keeping their DNA intact over longer periods of desiccation than species adapted to the humid tropics; the latter should not need the same mechanisms for DNA protection. The DNA of tropical lichens should degrade faster when subjected to desiccation, which is, in fact, our traditional

way of preserving lichen specimens. Specimens collected in the humid tropics need to be dried longer, but due to limited facilities and time, the drying process is often compressed by increasing the temperature. Sometimes, the process may not be fully completed for several days or weeks, facilitating enzymatic DNA degradation. Bakker et al. (2016) found the DNA of wet-tropical angiosperms to have aged faster than the DNA of angiosperms from dry habitats and attribute this difference to the more intense drying processes. This led us to formulate the third hypothesis that quality DNA and sequence reads are more readily obtained from preserved specimens of species adapted to dry habitats than from those adapted to humid conditions. This is also the reason why we chose species pairs growing in dry inland habitats vs. humid coastal areas. Our statistical analyses, however, did not support our hypothesis (Table 4); the average sequencing success rate for inland species was only slightly higher than for coastal species (68 vs. 62%, respectively). Due to the limited availability of relevant specimens, the sampling in this study was restricted to boreal taxa with different preferential distribution ranges. Both species of each genus exhibit distribution ranges that overlap to some extent, which may contribute to the non-significant results. Our results therefore do not preclude significant differences in sequencing success between specimens from more extreme habitats, such as (semi-) arid deserts vs. tropical rainforests.

### Applicability of the Ion Torrent Protocol for Lichen Taxonomy

Sanger sequencing is still the preferred and most commonly used method for generating sequences of the barcode marker ITS and other markers in lichen systematics (Hoffman and Lendemer, 2018). Our study shows that HTS is highly suitable for obtaining sequences from both young and old lichen specimens. We managed to recover full-length sequences from historical specimens using the two-step PCR HTS protocol by Prosser et al. (2016), specimens for which Sanger sequencing failed completely or produced substantially shorter sequences.

This study includes specimens of the same species from different time periods. Using existing DNA sequences of the same species as reference simplifies quality-checking different steps during read analysis. We therefore used available references of the same set of species for read mapping, which greatly facilitated this task including the quality-checking for mistakes. Our expectation was to receive near identical mtSSU sequences for the specimens belonging to the same species, not the least because the mtSSU marker is generally understood to be less variable than the ITS, which may vary highly within populations of the same species. Hence, we assume that read assembly might be more challenging for ITS. If there is no reference sequence available of the study species or a closely related taxon, the sequence reads need to be *de novo* assembled and proofreading will be more challenging. There are few species, for which no recently collected material exists, and which are not represented by DNA sequences in GenBank. Most challenging may be the common case in lichenology of species that are only known from an old type specimen.

In our assembled reads, we frequently encountered homopolymer-associated indel errors, especially in AT-rich regions and when compared to our Sanger-sequenced samples.

This is a commonly known disadvantage of the Ion Torrent PGM sequencing method but is also a known issue for Sanger sequencing (Loman et al., 2012; Goodwin et al., 2016). In addition, the Ion Torrent PGM has a sequence read error rate of 1–1.8% (Loman et al., 2012; Quail et al., 2012), which may generate errors that are difficult to discern from the true sequence when only a few reads are recovered and no reference sequence is available. In our consensus sequences of the assembled reads, we found up to seven differing nucleotide sites between specimens of the same species. It is unclear if these differences result from Ion Torrent specific sequencing errors or if they merely represent intraspecific variation, especially when only a few reads were recovered. We found these nucleotide differences in both sequences assembled from many reads as well as those based on few reads, suggesting that the differing nucleotide sites result from intraspecific variation rather than sequencing errors. When working with long-time archived specimens, sequences should be checked and corrected for typical ancient DNA degradation patterns, especially T to C substitutions in fragment ends (Weiß et al., 2016). We expected T to C substitutions to occur in sequence reads from the older specimens compared to the reference sequences based on fresh specimens. We could not find any of these substitutions and assume that they might have been lost during read trimming steps. We discovered only three T to C substitutions in sequences from the 1960- and 1910-periods and none in the ones from the 1885- and 1860-periods. These substitutions, however, were never at the end of fragments. This is consistent with the suggestion above that the differing nucleotide sites represent true intraspecific variation.

Another challenge when assembling historical type specimens without an appropriate reference sequence is the identification of contaminant sequence reads. We discovered contaminant sequence reads in our assembled consensus sequences. When subjecting these reads to BLAST searches at NCBI or against our own DNA sequence database, we found them to often associate with *Umbilicaria* or *Miriquidica* species. Reads belonging to species of *Cladonia* or *Peltigera* could also be detected in various datasets of other species. These contaminants might result from spores of other species being attached to the fragments we chose for DNA extraction. The contamination by *Cladonia* or *Peltigera* reads might also be due to demultiplexing errors. Only rarely did some of the assembled sequences belong to other, non-lichenized, fungal species, such as *Aspergillus*. The latter genus is often encountered when sequencing lichens without conducting the preparation steps in a dedicated clean lab facility. The low amount of fungal contaminants in our sequence reads indicates that performing the DNA extractions and PCR preparations in a clean lab facility is important for eliminating such contaminants.

### Drawbacks, Potential Improvements, and Future Use of the Approach Tested in This Study

In this pilot study, we were able to recover sequences from almost all specimens investigated including several specimens collected more than 100 years ago. To our knowledge, this is the first successful attempt to recover a full taxonomic marker (i.e., the ca. 900 bases of the mtSSU regularly used in lichen



systematics) from lichen specimens that were collected up to 127 years ago. In this study, we tested specimens from two orders of lichenized ascomycetes. As the approach by Prosser et al. (2016) should be a universally applicable method, which can be tailored to any organism of interest, we expect this approach to work for lichenized basidiomycetes as well, given that adequate primers are developed. We recommend this approach to be tested on additional species from various lichen families with more representatives per species per period. Doing so, one may better understand why certain specimens fail to produce reads and further explore to what extent sequencing success depends on taxonomic affinity and/or the autecology of the species. In particular, sequencing success of specimens from moist tropical vs. dry habitats should be assessed using specimens from more extreme habitats. Future studies should make use of rich herbarium collections of species with even older specimens and a denser time-line sampling. In addition, the applicability of our Ion Torrent approach on the ITS, the fungal barcode marker, and other relevant markers ought to be explored.

We discovered that some of the old specimens (collected >80 years ago) contained PCR-inhibitory substances; a discovery we made only after we had finished sequencing our samples. Especially, *Nephroma* specimens seemed to contain strong PCR-inhibitors, which might explain their low sequencing success. Hence, we strongly recommend testing for the presence of PCR-inhibitory substances by running dilution series before the start of the Ion Torrent approach. In addition, tweaking the PCR conditions further might lead to more successful PCR amplification. Moreover, several studies have shown that different polymerases give different results (e.g., Telle and Thines, 2008; Särkinen et al., 2012), indicating several starting points for increasing sequencing success in the future.

Other HTS platforms, for example various Illumina machines, should be explored to assess if these can overcome some of the drawbacks with the Ion Torrent PGM. Using the Illumina MiSeq technology, Forin et al. (2018) managed to obtain ITS2 sequences of century-old fungal collections, indicating the potential success of this approach also for historical lichen specimens. Furthermore, single-read sequencing technologies, such as implemented in the PacBio (Pacific Biosciences) and MinION (Oxford nanopore technologies) should be tested with lichen material. Both platforms might circumvent the amplification step, thus reducing possible amplification biases. However, they also produce longer and fewer reads than the Ion Torrent or Illumina platforms (Bleidorn, 2016), which is no advantage when working with fragmented DNA, though. To our knowledge, these platforms have so far not been tested on historical herbarium material.

An alternative approach to obtaining DNA sequences from historical lichen specimens is shotgun sequencing of the entire genome. While several biogeographic studies have adopted this approach (e.g., Cao et al., 2011; Rivarola et al., 2011), research within lichen systematics and taxonomy still largely relies on Sanger sequencing of certain markers (Hoffman and Lendemer, 2018). The full genome size of some flowering plants and ferns can reach up to 147 Gb (Hidalgo et al., 2017). In contrast, the lichen mycobiont has a typical genome size of only about

35 Mb (Grube et al., 2014) and a variable mitochondrial genome size of 25–120 kb (Pogoda et al., 2018). So, the implementation and regular use of shotgun sequencing of unreduced genomic DNA seems more feasible and applicable in fungi than in plants. Surprisingly, Staats et al. (2013) found that the coverage for whole genome sequencing of fungi was lower than for other organisms, such as plants or insects. They were able, however, to recover nearly full organelle genomes. Other fungal studies can point to full genome recovery success (e.g., Van Kan et al., 2017; Armstrong et al., 2018). The amount of required input material for obtaining the complete organelle or the entire genome of an organism might be a limiting factor for historical specimens. Complete organelle genomes have been successfully sequenced from as little as 24–33 ng input DNA (Bakker et al., 2016; Zedane et al., 2016). Clearly, shotgun sequencing of unreduced genomic DNA of historical specimens should be explored further to find out if taxonomically relevant markers can be fully recovered, without increase in sample destruction and with reduced cost and effort.

The costs for using the herein described Ion Torrent approach are less than twice as high as Sanger-sequencing costs if we had attempted to Sanger-sequence all seven mtSSU fragments per specimen. Within the last decade, costs for HTS, such as Ion Torrent and Illumina, have declined rapidly and are expected to decline further in the future. Hence, it will soon become more feasible also for smaller labs to implement our Ion Torrent approach. Costs can be further reduced by multiplexing more specimens. In addition, Ion Torrent sequencing is more time-efficient than Sanger-sequencing, not necessarily for sample preparation, but concerning the actual sequencing time.

We anticipate and welcome future and more comprehensive studies on historical lichen specimens that will identify where the methodological improvements can be gained. Our results show that DNA is still present in high enough quantities and as long enough fragments in 150-years-old lichen specimens for succeeding with the Prosser et al. (2016) method. Thus, a protocol combining PCR amplification of different-length fragments and HTS seems promising for circumventing the challenges with fragmented and low-concentration DNA.

## DATA AVAILABILITY

### Datasets Are in a Publicly Accessible Repository

The sequences generated for this study can be found in GenBank under the respective accession number listed in **Table 1**. Sequences, which could not be submitted to GenBank as well as Sanger sequences, can be found in **Supplementary Files S1, S2**, respectively.

### Datasets Are Available on Request

The raw sequencing data supporting the conclusions of this manuscript will be made available by the authors, without undue reservation, to any qualified researcher.

## AUTHOR CONTRIBUTIONS

MB and ET initiated the study, which was further developed together with SK. SK, AS-N, LT, and MB planned and designed the experiments. ET provided the specimens, which were sampled by SK. SK performed the laboratory work under guidance by AS-N, LT, and MB. SK analyzed the generated sequence data. RH performed the statistical analyses. SK wrote the first draft whereas all authors edited and completed the manuscript.

## ACKNOWLEDGMENTS

We are grateful to Stefan Ekman (Museum of Evolution, Uppsala, Sweden) and Jarl Andreas Anmarkrud from the DNA-lab (Natural History Museum, Oslo, Norway) for valuable discussions and the latter in addition for assistance before

## REFERENCES

- Adams, R. P. (2011). DNA from herbarium specimens: II. Correlation of DNA degradation with humidity. *Phytologia* 93, 351–359.
- Amo de Paz, G., Cubas, P., Divakar, P. K., Lumbsch, H. T., and Crespo, A. (2011). Origin and diversification of major clades in parmelioid lichens (Parmeliaceae, Ascomycota) during the Paleogene inferred by Bayesian analysis. *PLoS ONE* 6:e28161. doi: 10.1371/journal.pone.0028161
- Andreasen, K., Manktelow, M., and Razafimandimbison, S. G. (2009). Successful DNA amplification of a more than 200-year-old herbarium specimen: recovering genetic material from the Linnaean era. *Taxon* 58, 959–962.
- Andrews, S. (2010). *FastQC: A Quality Control Tool for High Throughput Sequence Data*. Available online at: <http://www.bioinformatics.babraham.ac.uk/projects/fastqc> (Accessed August, 2018).
- Armaleo, D., and Clerc, P. (1995). A rapid and inexpensive method for the purification of DNA from lichens and their symbionts. *Lichenologist* 27, 207–213. doi: 10.1016/S0024-2829(95)80019-0
- Armstrong, E. E., Prost, S., Ertz, D., Westberg, M., Frisch, A., and Bendiksby, M. (2018). Draft genome sequence and annotation of the lichen-forming fungus *Arthonia radiata*. *Genome Announcements* 6:18. doi: 10.1128/genomeA.00281-18
- Bakker, F. T., Lei, D., Yu, J., Mohammadin, S., Wei, Z., van de Kerke, S., et al. (2016). Herbarium genomics: plastome sequence assembly from a range of herbarium specimens using an Iterative Organellar Genome Assembly pipeline. *Biol. J. Linnean Soc.* 117, 33–43. doi: 10.1111/bij.12642
- Bendiksby, M., Mazzoni, S., Jørgensen, M. H., Halvorsen, R., and Holien, H. (2014). Combining genetic analyses of archived specimens with distribution modelling to explain the anomalous distribution of the rare lichen *Staurolemma omphalarioides*: long-distance dispersal or vicariance? *J. Biogeogr.* 41, 2020–2031. doi: 10.1111/jbi.12347
- Bendiksby, M., and Timdal, E. (2013). Molecular phylogenetics and taxonomy of *Hypocenomyce* sensu lato (Ascomycota: Lecanoromycetes): extreme polyphyly and morphological/ecological convergence. *Taxon* 62, 940–956. doi: 10.12705/625.18
- Benson, D. A., Cavanaugh, M., Clark, K., Karsch-Mizrachi, I., Ostell, J., Pruitt, K. D., et al. (2018). GenBank. *Nucleic Acids Res.* 46, D41–D47. doi: 10.1093/nar/gkx1094
- Bieker, V. C., and Martin, M. D. (2018). Implications and future prospects for evolutionary analyses of DNA in historical herbarium collections. *Bot. Lett.* 165, 409–418. doi: 10.1080/23818107.2018.1458651
- Bleidorn, C. (2016). Third generation sequencing: technology and its potential impact on evolutionary biodiversity research. *Syst. Biodivers.* 14, 1–8. doi: 10.1080/14772000.2015.1099575

and during the molecular work in the lab. Thanks are also due to Sean Prosser (University of Guelph, Guelph, Canada) for additional comments on the molecular methods. We thank Micheal D. Martin (NTNU University Museum, Trondheim, Norway) for extracting DNA from the samples of the 1860-period.

## SUPPLEMENTARY MATERIAL

The Supplementary Material for this article can be found online at: <https://www.frontiersin.org/articles/10.3389/fevo.2019.00005/full#supplementary-material>

The file S1\_HTS\_sequences.fasta contains those Ion Torrent sequences generated in this study with <200 bases length or >50% ambiguous characters, which could not be submitted to GenBank. The file S2\_Sanger\_sequences.fasta contains all Sanger sequences generated in this study.

- Bushnell, B. (2015). *BBTools Package*. Available online at: <http://www.sourceforge.net/projects/bbmap/>
- Cao, J., Schneeberger, K., Ossowski, S., Günther, T., Bender, S., Fitz, J., et al. (2011). Whole-genome sequencing of multiple *Arabidopsis thaliana* populations. *Nat. Genet.* 43, 956–963. doi: 10.1038/ng.911
- Culberson, C. F., and Culberson, W. L. (2001). Future directions in lichen chemistry. *Bryologist* 104, 230–234. doi: 10.1639/0007-2745(2001)104[0230:fdilc]2.0.co;2
- Do, D., and Drábková, L. Z. (2018). Herbarium tale: the utility of dry specimens for DNA barcoding Juncaceae. *Plant Syst. Evol.* 304, 281–294. doi: 10.1007/s00606-017-1476-x
- Doyle, J. J., and Dickson, E. E. (1987). Preservation of plant samples for DNA restriction endonuclease analysis. *Taxon* 36, 715–722. doi: 10.2307/1221122
- Drábková, L. Z. (2014). “DNA extraction from herbarium specimens,” in *Molecular Plant Taxonomy: Methods and Protocols*, ed P. Besse (Totowa, NJ: Humana Press), 69–84.
- Edgar, R. C., Haas, B. J., Clemente, J. C., Quince, C., and Knight, R. (2011). UCHIME improves sensitivity and speed of chimera detection. *Bioinformatics* 27, 2194–2200. doi: 10.1093/bioinformatics/btr381
- Ekman, S. (1999). PCR optimization and troubleshooting, with special reference to the amplification of ribosomal DNA in lichenized fungi. *Lichenologist* 31, 517–531. doi: 10.1006/lich.1999.0226
- Elix, J. A. (2014). *A Catalogue of Standardized Chromatographic Data and Biosynthetic Relationships for Lichen Substances, 3rd Ed.* Canberra: Elix,
- Erkens, R. H. J., Cross, H., Maas, J. W., Hoenselaar, K., and Chatrou, L. W. (2008). Assessment of age and greenness of herbarium specimens as predictors for successful extraction and amplification of DNA. *Blumea Biodivers. Evol. Biogeogr. Plants* 53, 407–428. doi: 10.3767/000651908x608052
- Forin, N., Nigris, S., Voyron, S., Girlanda, M., Vizzini, A., Casadoro, G., et al. (2018). Next generation sequencing of ancient fungal specimens: the case of the Saccardo Mycological Herbarium. *Front. Ecol. Evol.* 6:129. doi: 10.3389/fevo.2018.00129
- Goodwin, S., McPherson, J. D., and McCombie, W. R. (2016). Coming of age: ten years of next-generation sequencing technologies. *Nat. Rev. Genet.* 17, 333–351. doi: 10.1038/nrg.2016.49
- Greve, M., Lykke, A. M., Fagg, C. W., Gereau, R. E., Lewis, G. P., Marchant, R., et al. (2016). Realising the potential of herbarium records for conservation biology. *S. Afr. J. Bot.* 105, 317–323. doi: 10.1016/j.sajb.2016.03.017
- Grube, M., Berg, G., Andrésson, Ó. S., Vilhelmsson, O., Dyer, P. S., and Miao, V. P. (2014). “Lichen genomics: prospects and progress,” in *The Ecological Genomics of Fungi*, ed F. Martin (Chichester: John Wiley & Sons, Inc.), 191–212.
- Gutaker, R. M., Reiter, E., Furtwängler, A., Schuenemann, V. J., and Burbano, H. A. (2017). Extraction of ultrashort DNA molecules from herbarium specimens. *BioTechniques* 62, 76–79. doi: 10.2144/000114517



- Hajibabaei, M., Singer, G. A. C., Hebert, P. D. N., and Hickey, D. A. (2007). DNA barcoding: how it complements taxonomy, molecular phylogenetics and population genetics. *Trends Genet.* 23, 167–172. doi: 10.1016/j.tig.2007.02.001
- Hall, A. V. (1988). Pest control in herbaria. *Taxon* 37, 885–907. doi: 10.2307/1222094
- Hebert, P. D. N., Cywinska, A., Ball, S. L., and deWaard, J. R. (2003). Biological identifications through DNA barcodes. *Proc. Roy. Soc. Lond. Ser. B Biol. Sci.* 270, 313–321. doi: 10.1098/rspb.2002.2218
- Hidalgo, O., Pellicer, J., Christenhusz, M., Schneider, H., Leitch, A. R., and Leitch, I. J. (2017). Is there an upper limit to genome size? *Trends Plant Sci.* 22, 567–573. doi: 10.1016/j.tplants.2017.04.005
- Hoffman, J. R., and Lendemer, J. C. (2018). A meta-analysis of trends in the application of Sanger and next-generation sequencing data in lichenology. *Bryologist* 121, 133–147. doi: 10.1639/0007-2745-121.2.133
- Holmes, M. W., Hammond, T. T., Wogan, G. O. U., Walsh, R. E., LaBarbera, K., Wommack, E. A., et al. (2016). Natural history collections as windows on evolutionary processes. *Mol. Ecol.* 25, 864–881. doi: 10.1111/mec.13529
- James, S. A., Soltis, P. S., Belbin, L., Chapman, A. D., Nelson, G., Paul, D. L., et al. (2018). Herbarium data: global biodiversity and societal botanical needs for novel research. *Appl. Plant Sci.* 6, 1–8. doi: 10.1002/aps3.1024
- Jankowiak, K., Buczkowska, K., and Szweykowska-Kulinska, Z. (2005). Successful extraction of DNA from 100-year-old herbarium specimens of the liverwort *Bazzania trilobata*. *Taxon* 54, 335–336. doi: 10.2307/25065361
- Kearse, M., Moir, R., Wilson, A., Stones-Havas, S., Cheung, M., Sturrock, S., et al. (2012). Geneious Basic: an integrated and extendable desktop software platform for the organization and analysis of sequence data. *Bioinformatics* 28, 1647–1649. doi: 10.1093/bioinformatics/bts199
- Kistenich, S., Timdal, E., Bendiksby, M., and Ekman, S. (2018). Molecular systematics and character evolution in the lichen family Ramalinaceae (Lecanorales, Ascomycota). *Taxon* 67, 871–904. doi: 10.12705/675.1
- Kress, W. J., García-Robledo, C., Uriarte, M., and Erickson, D. L. (2015). DNA barcodes for ecology, evolution, and conservation. *Trends Ecol. Evol.* 30, 25–35. doi: 10.1016/j.tree.2014.10.008
- Lander, T. A., Dadonaite, B., and Monro, A. K. (2013). Microwave drying of plant material for herbarium specimens and genetic analysis. *Taxon* 62, 790–797. doi: 10.12705/624.33
- Larsson, E., and Jacobsson, S. (2004). Controversy over *Hygrophorus cossus* settled using ITS sequence data from 200 year-old type material. *Mycol. Res.* 108, 781–786. doi: 10.1017/S0953756204000310
- Lavoie, C. (2013). Biological collections in an ever changing world: herbaria as tools for biogeographical and environmental studies. *Perspect. Plant Ecol. Evol. Syst.* 15, 68–76. doi: 10.1016/j.ppees.2012.10.002
- Leavitt, S. D., Divakar, P. K., Ohmura, Y., Wang, L.-S., Esslinger, T. L., and Lumbsch, H. T. (2015). Who's getting around? Assessing species diversity and phylogeography in the widely distributed lichen-forming fungal genus *Montanelia* (Parmeliaceae, Ascomycota). *Mol. Phylogenet. Evol.* 90, 85–96. doi: 10.1016/j.ympev.2015.04.029
- Leavitt, S. D., Fernández-Mendoza, F., Pérez-Ortega, S., Sohrabi, M., Divakar, P. K., Lumbsch, T., et al. (2013). DNA barcode identification of lichen-forming fungal species in the *Rhizoplaca melanophthalma* species-complex (Lecanorales, Lecanoraceae), including five new species. *MycKeys* 7, 1–22. doi: 10.3897/mycokeys.7.4508
- Legendre, P., and Legendre, L. (eds.). (2012). “Complex ecological data sets,” in *Developments in Environmental Modelling* (Oxford, UK: Elsevier), 1–57.
- Loman, N. J., Misra, R. V., Dallman, T. J., Constantinidou, C., Gharbia, S. E., Wain, J., et al. (2012). Performance comparison of benchtop high-throughput sequencing platforms. *Nat. Biotechnol.* 30, 434–439. doi: 10.1038/nbt.2198
- Lumbsch, H. T., and Leavitt, S. D. (2011). Goodbye morphology? A paradigm shift in the delimitation of species in lichenized fungi. *Fungal Divers.* 50, 59–72. doi: 10.1007/s13225-011-0123-z
- Mark, K., Cornejo, C., Keller, C., Flück, D., and Scheidegger, C. (2016). Barcoding lichen-forming fungi using 454 pyrosequencing is challenged by artifactual and biological sequence variation. *Genome* 59, 685–704. doi: 10.1139/gen-2015-0189
- McCullagh, P., and Nelder, J. A. (1989). *Generalized Linear Models*. London: Chapman & Hall/CRC Press.
- Meineke, E. K., Davis, C. C., and Davies, T. J. (2018). The unrealized potential of herbaria for global change biology. *Ecol. Monogr.* 88, 505–525. doi: 10.1002/ecm.1307
- Oksanen, J., Blanchet, F. G., Friendly, M., Kindt, R., Legendre, P., McGlinn, D., et al. (2016). *vegan: Community Ecology Package Version 2.4-6—The R Foundation for Statistical Computing*. Available online at: <http://cran.r-project.org>
- Pearson, K. (1901). On lines and planes of closest fit to systems of points in space. *Lond. Edinburgh Dublin Philos. Mag. J. Sci.* 2, 559–572. doi: 10.1080/14786440109462720
- Pogoda, C. S., Keepers, K. G., Lendemer, J. C., Kane, N. C., and Tripp, E. A. (2018). Reductions in complexity of mitochondrial genomes in lichen-forming fungi shed light on genome architecture of obligate symbioses. *Mol. Ecol.* 27, 1155–1169. doi: 10.1111/mec.14519
- Prosser, S. W., deWaard, J. R., Miller, S. E., and Hebert, P. D. (2016). DNA barcodes from century-old type specimens using next-generation sequencing. *Mol. Ecol. Resources* 16, 487–497. doi: 10.1111/1755-0998.12474
- Quail, M. A., Smith, M., Coupland, P., Otto, T. D., Harris, S. R., Connor, T. R., et al. (2012). A tale of three next generation sequencing platforms: comparison of Ion Torrent, Pacific Biosciences and Illumina MiSeq sequencers. *BMC Genomics* 13:341. doi: 10.1186/1471-2164-13-341
- R Development Core Team. (2018). *R: A Language and Environment for Statistical Computing*. Vienna: R Foundation for Statistical Computing. Available online at: <http://cran.r-project.org>
- Ratnasingham, S., and Hebert, P. D. (2007). BOLD: The Barcode of Life Data System (<http://www.barcodinglife.org>). *Mol. Ecol. Notes* 7, 355–364. doi: 10.1111/j.1471-8286.2007.01678.x
- Rivarola, M., Foster, J. T., Chan, A. P., Williams, A. L., Rice, D. W., Liu, X., et al. (2011). Castor bean organelle genome sequencing and worldwide genetic diversity analysis. *PLoS ONE* 6:e21743. doi: 10.1371/journal.pone.0021743
- Rohland, N., and Hofreiter, M. (2007). Comparison and optimization of ancient DNA extraction. *BioTechniques* 42, 343–352. doi: 10.2144/000112383
- Särkinen, T., Staats, M., Richardson, J. E., Cowan, R. S., and Bakker, F. T. (2012). How to open the treasure chest? Optimising DNA extraction from herbarium specimens. *PLoS ONE* 7:e43808. doi: 10.1371/journal.pone.0043808
- Seifert, K. A. (2009). Progress towards DNA barcoding of fungi. *Mol. Ecol. Resources* 9, 83–89. doi: 10.1111/j.1755-0998.2009.02635.x
- Shepherd, L. D. (2017). A non-destructive DNA sampling technique for herbarium specimens. *PLoS ONE* 12:e0183555. doi: 10.1371/journal.pone.0183555
- Slepecky, R. A., and Starmer, W. T. (2009). Phenotypic plasticity in fungi: a review with observations on *Aureobasidium pullulans*. *Mycologia* 101, 823–832. doi: 10.3852/08-197
- Sohrabi, M., Myllys, L., and Stenroos, S. (2010). Successful DNA sequencing of a 75 year-old herbarium specimen of *Aspicilia aschabadensis* (J. Steiner) Mereschk. *Lichenologist* 42, 626–628. doi: 10.1017/S0024282910000344
- Soltis, D. E., and Soltis, P. S. (2016). Mobilizing and integrating big data in studies of spatial and phylogenetic patterns of biodiversity. *Plant Divers.* 38, 264–270. doi: 10.1016/j.pld.2016.12.001
- Spribille, T., Tuovinen, V., Resl, P., Vanderpool, D., Wolinski, H., Aime, M. C., et al. (2016). Basidiomycete yeasts in the cortex of ascomycete macrolichens. *Science* 353, 488–492. doi: 10.1126/science.aaf8287
- Staats, M., Cuenca, A., Richardson, J. E., Vrieland-van Ginkel, R., Petersen, G., Seberg, O., et al. (2011). DNA damage in plant herbarium tissue. *PLoS ONE* 6:e28448. doi: 10.1371/journal.pone.0028448
- Staats, M., Erkens, R. H. J., van de Vossenberg, B., Wieringa, J. J., Kraaijeveld, K., Stielow, B., et al. (2013). Genomic treasure troves: complete genome sequencing of herbarium and insect museum specimens. *PLoS ONE* 8:e69189. doi: 10.1371/journal.pone.0069189
- Struck, T. H., Feder, J. L., Bendiksby, M., Birkeland, S., Cerca, J., Gusarov, V. I., et al. (2018). Finding evolutionary processes hidden in cryptic species. *Trends Ecol. Evol.* 33, 153–163. doi: 10.1016/j.tree.2017.11.007
- Suzuki, M., Segawa, T., Mori, H., Akiyoshi, A., Ootsuki, R., Kurihara, A., et al. (2016). Next-generation sequencing of an 88-year-old specimen of the poorly known species *Liagora japonica* (Nemaliales, Rhodophyta) supports the recognition of *Otohimella* gen. nov. *PLoS ONE* 11:e0158944. doi: 10.1371/journal.pone.0158944
- Taylor, J. W., and Swann, E. C. (1994). “DNA from herbarium specimens,” in *Ancient DNA: Recovery and Analysis of Genetic Material from Paleontological*,

- Archaeological, Museum, Medical, and Forensic Specimens*, eds B. Herrmann and S. Hummel (New York, NY: Springer), 166–181.
- Telle, S., and Thines, M. (2008). Amplification of *cox2* (~620 bp) from 2 mg of up to 129 years old herbarium specimens, comparing 19 extraction methods and 15 polymerases. *PLoS ONE* 3:e3584. doi: 10.1371/journal.pone.0003584
- Untergasser, A., Cutcutache, I., Koressaar, T., Ye, J., Faircloth, B. C., Remm, M., et al. (2012). Primer3—new capabilities and interfaces. *Nucleic Acids Res.* 40:e115. doi: 10.1093/nar/gks596
- Van Kan, J. A. L., Stassen, J. H. M., Mosbach, A., Van Der Lee, T. A. J., Faino, L., Farmer, A. D., et al. (2017). A gapless genome sequence of the fungus *Botrytis cinerea*. *Mol. Plant Pathol.* 18, 75–89. doi: 10.1111/mpp.12384
- Weiß, C. L., Schuenemann, V. J., Devos, J., Shirsekar, G., Reiter, E., Gould, B. A., et al. (2016). Temporal patterns of damage and decay kinetics of DNA retrieved from plant herbarium specimens. *Roy. Soc. Open Sci.* 3, 1–12. doi: 10.1098/rsos.160239
- Werth, S., Reynisdóttir, S., Gudmundsson, H., and Andrésson, Ó. S. (2016). A fast and inexpensive high-throughput protocol for isolating high molecular weight genomic DNA from lichens. *Herzogia* 29, 610–616. doi: 10.13158/hea.29.2.2016.610
- Willis, C. G., Ellwood, E. R., Primack, R. B., Davis, C. C., Pearson, K. D., Gallinat, A. S., et al. (2017). Old plants, new tricks: phenological research using herbarium specimens. *Trends Ecol. Evol.* 32, 531–546. doi: 10.1016/j.tree.2017.03.015
- Zedane, L., Hong-Wa, C., Murienne, J., Jeziorski, C., Baldwin, B. G., and Besnard, G. (2016). Museomics illuminate the history of an extinct, paleoendemic plant lineage (*Hesperelaea*, Oleaceae) known from an 1875 collection from Guadalupe Island, Mexico. *Biol. J. Linnean Soc.* 117, 44–57. doi: 10.1111/bij.12509
- Zhao, X., Fernández-Brime, S., Wedin, M., Locke, M., Leavitt, S. D., and Lumbsch, H. T. (2017). Using multi-locus sequence data for addressing species boundaries in commonly accepted lichen-forming fungal species. *Organ. Divers. Evol.* 17, 351–363. doi: 10.1007/s13127-016-0320-4
- Zoller, S., Scheidegger, C., and Sperisen, C. (1999). PCR primers for the amplification of mitochondrial small subunit ribosomal DNA of lichen-forming ascomycetes. *Lichenologist* 31, 511–516. doi: 10.1006/lich.1999.0220

**Conflict of Interest Statement:** The authors declare that the research was conducted in the absence of any commercial or financial relationships that could be construed as a potential conflict of interest.

Copyright © 2019 Kistenich, Halvorsen, Schröder-Nielsen, Thorbek, Tindal and Bendiksbj. This is an open-access article distributed under the terms of the Creative Commons Attribution License (CC BY). The use, distribution or reproduction in other forums is permitted, provided the original author(s) and the copyright owner(s) are credited and that the original publication in this journal is cited, in accordance with accepted academic practice. No use, distribution or reproduction is permitted which does not comply with these terms.















>Cladonia\_floerkeana\_2010

AATAGCCTAACGGTGAACCAGCAATTTGGAAGAATGTATAGCAATAGCTGATTGCACCAACAAACAGTTGATG  
CAAAATT  
GATTATATCAAATAAAAATTTCTAGGTAGATTTTTGATAATGACATTGCTTACCTAAGTCTTGACCAAATTACGT  
GCCAGCA  
GTCGCGGTAATACGTA AAAAGACTAGTGTATTTCATCTTTAATTGGTTTTAAAGGGTACCTAGACAGCGAATAAA  
GCCATAG  
TAGGGACTTATTCGCTAGAGTTACTTATGAGGGGGTATTAAGTACTGCAGGTGTAGAGATGAAATTTTGTTA  
TACCTCT  
TTTCGTTTTGAGAACTATGGCACAGGTATAGGTGAAAGCATCCCCCTTATGTGATAACTGACGTTGAGGGACGA  
AGGCTTT  
GTGTGCGAACAGGATTAGATACCCCAGTAGTCAAAGCAGAAAAATGATGAATGTCATAGATTAGATATACAAT  
TTATTCT  
ATAAATGAAAGTGTAAAGCATTCACCTCAAGAGTAATTTGGCAACATTGGAAGTGAATCATTAGACCGTTTC  
TGAAACC  
AGTAGTGAAGTATGTTGTTTAAATTTGATGATACGCAAAAAACCTTACCACAATTTGAATATTTATATATATCT  
TTTATTG  
ATTTTTACTTACATCTATGTAAATAATTA AAAATGATGCTTAAATCTCGTTTTGTGAGACTGAGCATGAAAAAG  
ATAATAT  
ATTTACAAGCGTTGCACGGCTGTCTTCAGTTAATGTGCGTGAAGTTTTGGTTAGTTCCATTAAATTAACGTAA  
CCCTTAC  
TTTATTTTTATATAAAGTAGTTCCCGCTATATTGGATATGATAACAGGGACTAAGACAAGTCATCATGGCCT  
GAATATT  
GT

>Cladonia\_gracilis\_2010

AATAGCCTAACGGCTGAACCAGCAATTTGGAAGAATGTATAGCAATAGCTGATTGCACCAACAAACAGTTGAT  
GCAAAAT  
TGATTATATCAAATAAAAATTTCTAGGTAGATTTTTGATAATGACATTGCTTACCTAAGTCTTGACCAAATTACG  
TGCCAGC  
AGTCGCGGTAATACGTA AAAAGACTAGTGTATTTCATCTTTAATTGGTTTTAAAGGGTACCTAGACAGCGAATAA  
AGCCATA  
GTAGGGACTAATTCGCTAGAGTTACTTATGAGGGGGTATTAAGTACTGCAGGTGTAGAGATGAAATTTTGTT  
ATACCTC  
TTCTCGTATGAGAACTATGGCACAGGTATAGGTGAAAGCATCCCCCTTATGTGATAACTGACGTTGAGGGACG  
AAGGCTT  
TGTGTCGCGAACAGGATTAGATACCCAATAGTCAAAGCAGAAAAATGATGAATGTCATAGATTAGATATGCAA  
TTTATTC  
TATAAATGAAAGTGTAAAGCATTCACCTCAAGAGTAATTTGGCAACATTGGAAGTGAATCATTAGACCGTTT  
CTGAAAC  
CAGTAGTGAAGTATGTTGTTTAAATTTGATGATACGCAAAAAACCTTACCACAATTTGAATATTTATATACATC  
TTTTATT  
GATTTTTACTAACATATTTGTAGACAATTA AAAATGATGCCTATGTCCCGTTTTGTGAGACTAAGCATCAAAAA  
GATAATA  
TATTTACAAGCGTTGCACGGCTGTCTTCAGTTAATGTGCGGAGATTTTGGTTAGTTCCATTAAATTAACGTAA  
ACCTTA  
CTTTATTTATATAAAGTAGTTCTCCGCTATATTGGATATGATAACAGGGACTAAGACAAGTCATCATGGCC  
TAAATAT  
TGT

>Nephroma\_arcticum\_2010

AATAGCGCAAGGCTTGAAACCAGCAACTGGAGGAATGTATGGCAATAGCCAATTGCATTATTATGATGCAGTAT  
CGAAGTC  
GAATAAAGTTCTGGGTAGACTATGATAATGACATTATCTATCTATGTGGTCTTGACCAAACACTACGTGCCAGCA  
GTCGCGG  
TAATACGTTAAAGACTAGTGTATTTCATGTTTAAATCGGTTTTAAAGAGTACCAAGACTGTTAATAAAGCCATA  
AAGGGGA  
CACATTAAGTACTAGATTATATGAAAGGAGGCTCTTAGGTTACTATCGAGTGTAGAGATAAAAATTTCTTTGATACG  
ATGAAGG  
CACGGGTCAATGCGAAGGCATCTTCTTATGTAATAACTGACGTTGTAGGACGAAGGCTTAGCGAAGAAAAAG  
GATTAGA  
TACCCTCGTATTCTAGGCAGAAAAATGATGAATGTCATAGGTTGAATATAATATTATTTTATTTGGTCTATAAA  
TGAAAGT

GTAAGCATTCCACCTCAAGAGTAATTTGGCAACATTGGAACCTGAAATCATTAGGCCGCTTTTGAACCAGTAG  
TGAAGTA  
TGTCGTTTAAATTTGATAACCCGCAAAAAACCTTACCACATTTTGAATAAATATTTATATATAAATATTTATAT  
ATATATA  
TATATATTTACAAGCGTTGCACGGCTGTCTTCAGTGAATGTCGTGAGAATTGGTTAACTCCATATAATTGACG  
CAAACCC  
TTACTTTATTTATAGATAAAGTTGTTACCTGTATGGGATATGATAATAGGGATCAAGACAAGTCATCATGA  
CCAAAAT  
AGTGT  
>Nephroma\_laevigata\_2010  
AATAGCCGCAAGGCTGAACCAGCAACTTGGAGGAATCAATGGCAATAGCCAATGCATTAATATGATGCAATAT  
CGAAGTC  
GAATAAAATTTCTGGGTAGACTATGATAATGACATTATCTATCTAGATGTCTTGACCAAAAATACGTGCCAGCAG  
TCGCGGT  
AAGACGTTAAAGACAAGTGTATTTCATGTTTAAATCGGTTTAAAGAGTCCCAAGACTGTTAATAAAGCCTACTG  
GGGACAC  
ATTAACCTAGAGTTATATGAAAGGGGGCTGTGAGGTTACTGTGCGGTGGAGAGATAAAATTCATTATACAGATG  
ATGGCAC  
CAACAAATGCGAAGGCATCCTCTTATGTAATAACTGACGTTTTTCAGACGAAGGCTTAGGGAAGAAAAATGGAT  
TAGATAC  
CCTCGTATTCTAAGCAGAAAATGATGAATGTCATAGGTTGAAGATAAATAATATTTATTTTGGTCTATAAATG  
AAAGTGT  
AAGCATTCCACCTCAAGAGTAATTTGGCAACATTGGAACCTGAAATCATTAGGCCGCTTTTGAACCAGTAGTG  
AAGTATG  
TTGTTTTAATTTGATAACCCGCACAAAACCTTACCCTATTTGCATAAATATTTATGTATATATTTACAAGTGT  
TGCACGG  
CTGTCTTCAGTTGATGTCGTGAGGCTAGGTTACTCCTAACCAATCAACGCAAACCTTACTTTATTTTATATA  
AAGTTGT  
TCACCTGTCTAGGAGATGCTAATAGGGACTAGGACAAGTCATCATGACCATAATATAGT  
>Peltigera\_collina\_2010  
GACCATGTGCAATAAAATTTCTAGGTAGAGTTTTGACAATGACATTCTCTATCTATGTGTCTTGACCAAATTAC  
GTGCCAG  
CAGTCGCGGTAATACGTAAAAGACTAGTGTATTTCATCTTTAATAGGTTTAAAGAGTACCAAGACGGTTAATA  
AAGCCCC  
TAAAGGGTACAAATTAACCTAGAGTTATATGAAAGGGAGCTCTTAGGTTACTGTTGAGTGTAGAGATGAAATCT  
GTGATAC  
CAGATGATTGGCACGGTCTATGCGAAGGCATCTCCTTATGTAATAACTGACGTTGTAGGACGAAGGCTTTTG  
AAGTGAA  
CAGGATTCGATACCCAGTAATCTAAGCAGAAAATGATGAGTGTCTATAGGTTAAATATAATTTAGTCTATAAA  
TGAAAGT  
GTAAGCATTCCACCTCAAGAGTAATTTGGCAACATTGGAACCTGAAATCATTAGACCGTTTCTGAAACCAGTAG  
TGAAGTA  
TGTTGTTTTAATTTGATGATCCGCAAAGAACCTTACCCTTTTAAATAATGTTAAAATTATTATTTTTTTTTTTTT  
TTTTACA  
TTGTTAAAATTATTATCTTGAATAAATATTTTTTTAATATTTACAAGCGTTGCACGGCTGTCTTCAGTTAATG  
TCGTGAG  
ATTTTGGTTAGTTCCATTAATTAACGAAAACCTTACTTTATTTTAAATATAAAGTTGTTACCGTTATAT  
>Peltigera\_malacea\_2010  
AATAGCCTAACGGCTGAACCAGCAACTTGGAGGAATGTAAGGCAATAGCCTAATGCATTATTTTAAATGTTTAA  
TCGACCA  
TGTCGAATAAAATTTCTAGGTAGAGTTTTGACAATGACATTCTCTATCTATGTGTCTTGACCAAATTACGTGCC  
AGCAGTC  
GCGGTAATACGTAAAAGACTAGTGTATTTCATCTTTAATAGGTTTAAAGAGTACCAAGACGGTTAATAAAGCC  
CCTAAAG  
GGTACAAGTTAACTAGAGTTATATGAAAGGGAGCTCTTAGGTTACTGTTGAGTGTAGAGATGAAATCTGTGAT  
ACCAGAT  
GATTGGCACGGTCTATGCGAAGGCATCTCCTTATGTAATAACTGACGTTGTAGGACGAAGGCTTTTGAAGTG  
AACAGGA  
TTCGATACCCAGTAATCTAGGCAGAAAATGATGAGTGTCTATAGGTTAAATATAATTTAGTCTATAAATGAAA  
GTGTAAG



CATTCCACCTCAAGAGTAATTTGGCAACATTGGAACCTGAAATCATTAGACCGTTTCTGAAACCAGTAGTGAAG  
TATGTTG  
TTTAATTTGATGATCCGCAAAGAACCCTTACCACCTTTTAATAATGTTAAAATTATTATTTTTTTTTTATAACAT  
TGTTAAA  
ATTATTATCTTGAATAAAATATTTTTTTAATATTTACAAGCGTTGCACGGCTGTCTTCAGTTAATGTCGTGAGA  
TTTTGGT  
TAGTTCATTAAATTAACGAAAACCCTTACTTTATTTTGATATAAAGTTGTTACCGTTATATTGGATATGAT  
AATAGGG  
ACCAGGACAAGTCATCATGACCTAAATATTGT  
>Nephroma\_laevigata\_1985  
AATAGCCGCAAGGCTGAACCAGCAACTTGGAGGAATCAATGGCAATAGCCAATGCATTAATATGATGCAATAT  
CGAAGTC  
GAATAAAATTCGGGTAGACTATGATAATGACATTATCTATCTAGATGTCTTGACCAAAAATACGTGCCAGCAG  
TCGCGGT  
AAGACGTTAAAGACAAGTGTATTTCATGTTTAAATCGGTTTAAAGAGTCCCAAGACTGTTAATAAAGCCTACTG  
GGACAC  
ATTAACCTAGAGTTATATGAAAGGGGGCTGTGAGGTTACTGTGCGGTGGAGAGATAAAAATTCATTATACAGATG  
ATGGCAC  
CAACAAATGCGAAGGCATCCTCTTATGTAATAACTGACGTTTTTCAGACGAAGGCTTAGGGAAGAAAAATGGAT  
TAGATAC  
CCTCGTATTCTAAGCAGAAAATGATGAATGTCATAGGTTGAAGATAAATAATATTTATTTTGGTCTATAAATG  
AAAGTGT  
AAGCATTCCACCTCAAGAGTAATTTGGCAACATTGGAACCTGAAATCATTAGGCCGTTTTTGAACCAGTAGTG  
AAGTATG  
TTGTTTTAATTTGATAACCCGCACAAAACCTTACCACCTATTTGCATAAAATATTTATGTATATATTTACAAGTGT  
TGCACGG  
CTGTCTTCAGTTGATGTCGTGAGGCTAGGTTACTCCTAACAAATCAACGCAAACCCTTACTTTATTTTTATATA  
AAGTTGT  
TCACCTGTCTATGGGAGATGCTAATAGGGACTAGGACAAGTCATCATGACCATAATATAGT  
>Peltigera\_collina\_1985  
CTATCTATGTCTTGACCAAATTACGTGCCAGCAGTCGCGGTAATACGTAAAAGACTAGTGTTATTCATCTT  
TAATAGG  
TTTAAAGAGTACCAAGACGGTTAATAAAGCCCCTAAAGGGTACAAATTAAGTACTAGAGTTATATGAAAGGGAGCT  
CTTAGGT  
ACTGTTGAGTGTAGAGATGAAATCTGTGATACCAGATGATTGGCACGGGTCTATGCGAAGGCATCTCCTTAT  
GTAATAA  
CTGACGTTGTAGGACGAAGGCTTTTGAAGTGAACAGGATTCGATACCCAGTAATCTAAGCAGAAAATGATGA  
GTGTCAT  
AGGTTAAATATAATTTAGTCTATAAATGAAAGTGTAAAGCATTCCACCTCAAGAGTAATTTGGCAACATTGGAA  
CTGAAAT  
CATTAGACCGTTTCTGAAACCAGTAGTGAAGTATGTTGTTTAAATTTGATGATCCGCAAAGAACCCTTACCACCT  
TTAATAA  
TGTTAAAATTATTATTTTTTTTTTTTTTTTACATTGTAAAATTATTATCTTGAATAAAATATTTTTTTAATAT  
TTACAAG  
CGTTGCACGGCTGTCTTCAGTTAATGTCGTGAGATTTTGGTTAGTTCATTAAATTAACGAAAACCCTTACTT  
TATTTTA  
ATATAAAGTTGTTACCGTTATATTGGATATGATAATAGGGAC  
>Peltigera\_malacea\_1985  
AATAGCCTAACGGCTGAACCAGCAACTTGGAGGAAGTAAGGCAATAGCCTAATGCATTATTTAATGTTTAAAT  
CGACCAT  
GTCGAATAAAATCTAGGTAGAGTTTTGACAATGACATTCTCTATCTATGTGTCTTGACCAAATTACGTGCCA  
GCAGTCG  
CGGTAATACGTAAAAGACTAGTGTATTTCATCTTTAATAGGTTTAAAGAGTACCAAGACGGTTAATAAAGCCC  
CTAAAGG  
GTACAAGTTAACTAGAGTTATATGAAAGGGAGCTYTTAGGTTACTGTTGAGTGTAGAGATGAAATCTGTGATA  
CCAGATG  
ATTGGCACGGGTCTATGCGAAGGCATCTCCTTATGTAATAACTGACGTTGTAGGACGAAGGCTTTTGAAGTGA  
ACAGGAT  
TCGATACCCAGTAATCTAGGCAGAAAATGATGAGTGTGATAGGTTAAATATAATTTAGTCTATAAATGAAAG  
TGTAAGC

ATTCCACCTCAAGAGTAATTTGGCAACATTGGAACCTGAAATCATTAGACCGTTTCTGAAACCAGTAGTGAAGT  
ATGTTGT  
TTAATTTGATGATCCGCAAAGAACCCTTACCACTTTTAATAATGTTAAAATTATTATTTTTTTTTTATAACATT  
GTTAAAA  
TTATTATCTTGAATAAATATTTTTTTAATATTTACAAGCGTTGCACGGCTGTCTTCAGTTAATGTCGTGAGAT  
TTTGTT  
AGTTCCATTAATAAACGAAAACCCTTACTTTATTTTATATAAAGTTGTTTACCGTTATATTGGATATGATA  
ATAGGGA  
CCAGGACAAGTCATCATGACCTAAATATTGT  
>Cladonia\_floerkeana\_1960  
AATAGCCTAACGGCTGAACCAGCAATTTGGAAGAATGTATAGCATAAGCTGATTGCACCAACAAACAGTTGAT  
GCAAAAT  
TGATTATATCAAATAAAATTTCTAGGTAGATTTTTGATAATGACATTGCTTACCTAAGTCTTGACCAAATTACG  
TGCCAGC  
AGTCGCGGTAATACGTAAAAGACTAGTGTATTTCATCTTTAATTGGTTTAAAGGGTACCTAGACAGCGAATAA  
AGCCATA  
GTAGGGACTAATTCGCTAGAGTTACTTATGAGGGGTATTAAAGTACTGCAGGTGTAGAGATGAAATTTTGT  
ATACCTC  
TTTTCGTATGAGAACTATGGCACAGGTATAGGTGAAAAGCATCCCTTATGTGATAACTGACGTTGAGGGACG  
AAGGCTT  
TGTGTCGCGAACAGGATTAGATACCCAGTAGTCAAAGCAGAAAATGATGAATGTCATAGATTAGATATACAA  
TTTATTC  
TATAAATGAAAGTGAAGCATTCCACCTCAAGAGTAATTTGGCAACATTGGAACCTGAAATCATTAGACCGTTT  
CTGAAAC  
CAGTAGTGAAGTATGTTGTTAATTTGA  
>Peltigera\_collina\_1960  
TAGTGTATTTCATCTTTAATAGGTTTAAAGAGTACCAAGACGGTTAATAAAGCCCCTAAAGGGTACAAATTAA  
CTAGAGT  
TATATGAAAGGGAGCTCTTAGGTACTGTTGAGTGTAGAGATGAAATTCTGTGATACCAGATGATTGGCACGGG  
TCTATGC  
GAAGGCATCTCCTTATGTAATAACTGACGTTGTAGGACGAAGGCTTTTGAAGTGAACAGGATTGATACCCCA  
GTAATCT  
AAGCAGAAAATGATGAGTGTATAGGTTAAATATAATTTAGTCTATAAATGAAAGTGAAGCATTCCACCTCA  
AGAGTAA  
TTTGGCAACATTGGAACCTGAAATCATTAGACCGTTTCTGAAACCAGTAGTGAAGTATGTTGTTAATTTGATG  
ATCCGCA  
AAGAACCTTACCACTTTTAATAATGTTAAAATTATTATTTTTTTTTTTTTTTTACATTGTTAAAATTATTATC  
TTGAATA  
AATATTTTTTTAATATTTACAAGCGTTGCACGGCTGTCTTCAGTTAATGTCGTGAGATTTTGGTTAGTTCCAT  
TAAATTA  
AC  
>Peltigera\_malacea\_1960  
AATAGCCTAACGGCTGAACCAGCAACTTGAGGAATGTAAGGCAATAGCCTAATGCATTATTTAATGTTTAA  
TCGACCA  
TGTCGAATAAAATTTCTAGGTAGAGTTTGGACAATGACATTCTCTATCTATGTGTCTTGACCAAATTACGTGCC  
AGCAGTC  
GCGGTAATACGTAAAAGACTAGTGTATTTCATCTTTAATAGGTTTAAAGAGTACCAAGACGGTTAATAAAGCC  
CCTAAAG  
GGTACAAGTTAACTAGAGTTATATGAAAAGGAGCTCTTAGGTACTGTTGAGTGTAGAGATGAAATTTCTGTGAT  
ACCAGAT  
GATTGGCACGGTCTATGCGAAGGCATCTCCTTATGTAATAACTGACGTTGTAGGACGAAGGCTTTTGAAGTG  
AACAGGA  
TTCGATACCCAGTAATCTAGGCAGAAAATGATGAGTGTATAGGTTAAATATAATTTAGTCTATAAATGAAA  
GTGTAAG  
CATTCCACCTCAAGAGTAATTTGGCAACATTGGAACCTGAAATCATTAGACCGTTTCTGAAACCAGTAGTGAAG  
TATGTTG  
TTTAATTTGATGATCCGCAAAGAACCCTTACCACTTTTAATAATGTTAAAATTATTATTTTTTTTTTTATAACAT  
TGTTAAA  
ATTATTATCTTGAATAAATATTTTTTTAATATTTACAAGCGTTGCACGGCTGTCTTCAGTTAATGTCGTGAGA  
TTTTGGT

TAGTTCATTAAATTAACGAAAACCCCTACTTTATTTTGACATAAAGTTGTTACCGTTATATTGGATATGAT  
AATAGGG  
ACCAGGACAAGTCATCATGACCTAAATATTGT  
>Peltigera\_collina\_1910  
AGGTTTAAAGAGTACCAAGACGGTTAATAAAGCCCCTAAAGGGTACAAATTAAGTAGAGTTATATGAAAGGGA  
GCTCTTA  
GGTACTGTTGAGTGTAGAGATGAAATTCTGTGATACCAGATGATTGGCACGGGTCTATGCGAAGGCATCTCCT  
TATGTAA  
TAACTGACGTTGTAGGACGAAGGCTTTTGAAGTGAACAGGATTTCGATACCCCAGTAATCTAAGCAGAAAATGA  
TGAGTGT  
CATAGGTTAAATATAATTTAGTCTATAAATGAAAGTGTAAAGCATTCCACCTCAAGAGTAATTTGGCAACATTG  
GAACTGA  
AATCATTAGACCGTTTCTGAAACCAGTAGTGAAGTATGTTGTTTAAATTTGATGATCCGCAAAGAACCTTACCA  
CTTTTAA  
TAATGTTAAAATTATTATTTTTTTTTTTTTTTTTTACATTGTTAAAATTATTATCTTGAATAAATATTTTTTTAA  
TATTTAC  
AAGCGTTGCACGGCTGTCTTCAGTTA  
>Peltigera\_malacea\_1910  
AATAGCCTAACGGCTGAACCAGCAACTTGGAGGAATGTAAGGCAATAGCCTAATGCATTATTTTAAATGTTTAA  
TCGACCA  
TGTCGAATAAAATTCTAGGTARAGTTTTGACAATGACATTCTCTATCTATGTGTCTTGACCAAATTACGTGCC  
AGCAGTC  
GCGGTAATACGTAAAAGACTAGTGTATTTCATCTTTAATAGGTTTAAAGAGTACCAAGACGGTTAATAAAGCC  
CCTAAAG  
GGTACAAGTTAACTAGAGTTATATGAAAGGGAGCTCTTAGGTAAGTGTGAGTGTAGAGATGAAATTCTGTGAT  
ACCAGAT  
GATTGGCACGGGTCTATGCGAAGGCATCTCCTTATGTAATAACTGACGTTGTAGGACGAAGGCTTTTGAAGTG  
AACAGGA  
TTCGATACCCCAGTAATCTAGGCAGAAAATGATGAGTGTACATAGGTTAAATATAATTTAGTCTATAAATGAAA  
GTGTAAG  
CATTCCACCTCAAGAGTAATTTGGCAACATTGGAAGTGAATCATTAGACCGTTTCTGAAACCAGTAGTGAAG  
TATGTTG  
TTTTAATTTGATGATCCGCAAAGAACCTTACCCTTTTAAATAATGTTAAAATTATTATTTTTTTTTTTATAACAT  
TGTTAAA  
ATTATTATCTTGAATAAATATTTTTTTTAAATTTTACAAGCGTTGCACGGCTGTCTTCAGTTAATGTCGTGAGA  
TTTTGGT  
TAGTTCATTAAATTAACGAAAACCCCTACTTTATTTTGACATAAAGTTGTTACCGTTATATTGGATATGAT  
AATAGGG  
ACCAGGACAAGTCATCATGACCTAAATATTGT  
>Peltigera\_collina\_1885  
AATGACATTCTCTATCTATGTGTCTTGACCAAATTACGTGCCAGCAGTCGCGGTAATACGTAAAAGACTAGTG  
TTATTCA  
TCTTTAATAGGTTTAAAGAGTACCAAGACGGTTAATAAAGCCCCTAAAGGGTACAAATTAAGTAGAGTTATAT  
GAAAGGG  
AGCTCTTAGGTAAGTGTGAGTGTAGAGATGAAATTCTGTGATACCAGATGATTGGCACGGGTCTATGCGAAGG  
CATCTCC  
TTATGTAATAACTGACGTTGTAGGACGAAGGCTTTTGAAGTGAACAGGATTTCGATACCCCAGTAATCTAAGCA  
GAAAATG  
ATGAGTGTACATAGGTTAAATATAATTTAGTCTATAAATGAAAGTGTAAAGCATTCCACCTCAAGAGTAATTTGG  
CAACATT  
GGAAGTGAATCATTAGACCGTTTCTGAAACCAGTAGTGAAGTATGTTGTTTAAATTTGATGATCCGCAAAGAA  
CCTTACC  
ACTTTTAAATAATGTTAAAATTATTATTTTTTTTTTTTTTTTTTACATTGTTAAAATTATTATCTTGAATAAATAT  
TTTTTTA  
ATATTTACAAGCGTTGCACGGCTGTCTTCAGTTAATGTCGTGAGATTTTGGTTAGTTCCATTAAATTAACGAA  
AACCCTT  
ACTTTTTTTAATAATAAAGTTGTTACCGTTATATTGGATATGATAAATAGGGACCAGGACAAGT