

Effect of soft Bi particles on grain refinement during severe plastic deformation

Hai-long JIA^{1*}, Knut MARTHINSEN¹, Yan-jun LI¹

1. Department of Materials Science and Engineering, Norwegian University of Science and Technology (NTNU), Trondheim 7491, Norway

Abstract: Two aluminum alloys, Al-8Zn and Al-6Bi-8Zn were subjected to equal channel angular pressing (ECAP) up to 5 passes at room temperature. The microstructural evolution and the grain refinement behavior of these alloys have been systematically studied by electron backscatter diffraction (EBSD). After 5 passes of ECAP, ultrafine grained microstructures formed in both alloys. However, the grain structure in the Al-6Bi-8Zn alloy is much finer than that of Al-8Zn alloy, showing that the soft Bi particles have a strong influence on enhancing the grain refinement during ECAP. The strength of the ECAP processed materials were measured by hardness test and it showed that after 5 passes of ECAP, the hardness of the Al-6Bi-8Zn alloy was higher than that of the Al-8Zn alloy. The effects of soft Bi particles on the deformation behavior during ECAP and the final strength of the Al-6Bi-8Zn alloy were discussed.

Keywords: Al alloys; ECAP; Bi particle; grain refinement; hardness evolution

1 Introduction

Alloys with a miscibility gap in the liquid state, such as Al-Bi, Al-Pb and Al-In, are potential materials for the application in advanced bearings in automotive industry [1]. The so-called hypermonotectic alloys with gross compositions above the monotectic one would be especially useful because the volume fraction of the soft inclusions is sufficiently high to produce bearings with a drastically lower friction coefficient and a very small wear resistance. Hypermonotectic Al-Bi (i.e. > 3.4 wt.% Bi) alloys containing homogeneously distributed soft second phase Bi particles (melting temperature 271.3°C) within an Al enriched hardenable matrix can resist high pulsating loads and show good tribological properties. Recently, EU has proscribed the use of Pb containing alloys [2], so hypermonotectic alloys has gained increased interest again. Therefore, developments of new Pb-free bearing materials are of great importance and alloys based on Al-Bi system are supposed to be good candidates to replace Al-Pb alloys. At the same time, another special advantage of the aluminum-based bearing materials is weight saving. So far, most of the research works have been conducted to understand the solidification behavior of Al-Bi alloys and improve the distribution of Bi particles by different methods [3-5]. For example, Adrina P. Silva et al. studied microstructural development [6] as well as thermal parameters [7] during transient directional solidification of Al-Bi alloys.

Equal channel angular pressing (ECAP) has been used to produce ultrafine grained (UFG) materials at a relatively low cost for many years [8]. However, studies of alloy composites containing soft easily deformable

Foundation item: Project (10407002) under the FRINATEK project supported by Research Council of Norway;

Project (201406080011) supported by China Scholarship Council.

Corresponding author: Hai-long JIA; Tel: +47-93682586; E-mail address: hailong.jia@ntnu.no

secondary phase particles distributed in a ductile hardenable matrix processed by ECAP are few [9]. Recently, M. Zha et al. [9] investigated the deformation behavior of Al-8Bi alloy using ECAP and found that the soft Bi particles contribute to matrix grain refinement. But the strength of the binary Al-Bi alloy is too low, so the aim of the present study is to improve the strength of Al-Bi alloy (by adding Zn into the Al-Bi alloy). The influence of soft secondary phase particles on grain refinement in hypermonotectic Al alloys containing Bi during ECAP process was investigated. At the same time, the corresponding hardness was briefly reported.

2 Experimental

The materials used in the present work were Al-8 wt.% Zn and Al-6 wt.% Bi-8 wt.% Zn ingots which were produced by melting 99.999 wt.% purity Al, Zn and Bi in a clay-graphite crucible and casted in an insulated and bottom-chilled Cu mould. Note that 0.5% Al-Ti-B grain refiner was added into the melt to get fine grains. Bars with dimensions of 100 mm×19.5 mm× 19.5 mm were machined from ingots for the ECAP process. Before ECAP, to lower the friction during pressing, samples were coated with a thin layer of a graphite lubricant. Then these bars were processed by ECAP through a 90° die via route Bc (samples were rotated by 90° in the same sense between each pass) at room temperature, which leads to an imposed equivalent strain of about 1.0 per pass [8]. [

Samples from the uniformly deformed central region of the ECAP processed billets were chosen for microstructure observation and hardness test. The deformed structure was characterized on the longitudinal section by electron backscattered diffraction (EBSD). The samples were grinded mechanically on abrasive papers containing SiC particles to a level of 4000 grit and finally polished with the 1µm diamond paste. Note that prior to the EBSD examination, the sample surfaces were ion milled by using the Hitachi IM 3000 machine at a high tilt angle of ~70° and a gas flow rate of ~0.08 ml/min for 45 min at 3.5V. EBSD was performed using a Hitachi SU-6600 field emission gun SEM (FEG-SEM) equipped with a Nordif EBSD detector and TSL-OIM software. The Vickers hardness measurements were performed using a DKV-1S Vickers hardness testing machine under a load of 1 Kg with a loading time of 15 s. The hardness values obtained were averaged from at least ten separate measurements to minimize the scatter. The equivalent circular diameter of the Bi particles was measured using the Image J software. Four BSE images (500×) for each sample were used for image analysis.

3 Results and discussion

3.1 Microstructural characterization

3.1.1 As-cast microstructure

As shown in Fig. 1(a), the microstructure of the as-cast Al-8Zn alloy consisted of α -Al grains with an average size of ~50 µm which was almost the same as the grain size of the matrix of Al-6Bi-8Zn alloy. In Fig. 1(b), the black spheres were Bi particles. Some of the Bi particles were along the grain boundaries and some are inside of the grains of the matrix. The average size of the Bi particles was measured to be approximately ~5 µm by using the Image J software.

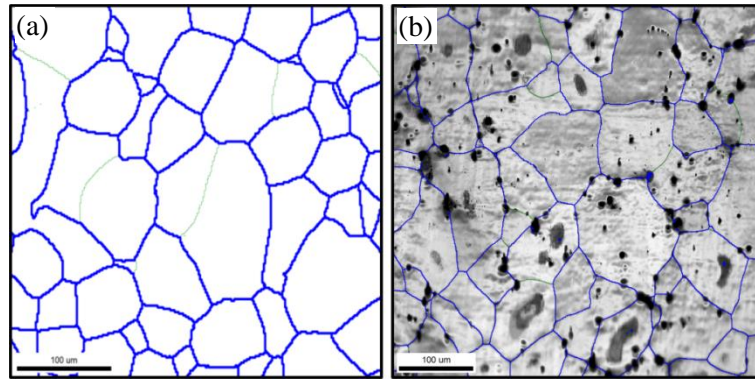


Fig. 1 (a) Grain boundary map (EBSD) for the as-cast Al-8Zn alloy and (b) image quality map (EBSD) for the as-cast Al-6Bi-8Zn alloy. Green and blue lines depict differences between neighbouring grid points $2^\circ < \Theta < 15^\circ$ and $15^\circ < \Theta < 180^\circ$ respectively

3.1.2 Deformation structure after room temperature ECAP

EBSD analysis was conducted on the longitudinal section of the 1P and 5P samples and the corresponding maps of the deformation microstructure developed after ECAP are shown in Fig. 2. The black areas are Bi particles in Fig. 2(b) and (d).

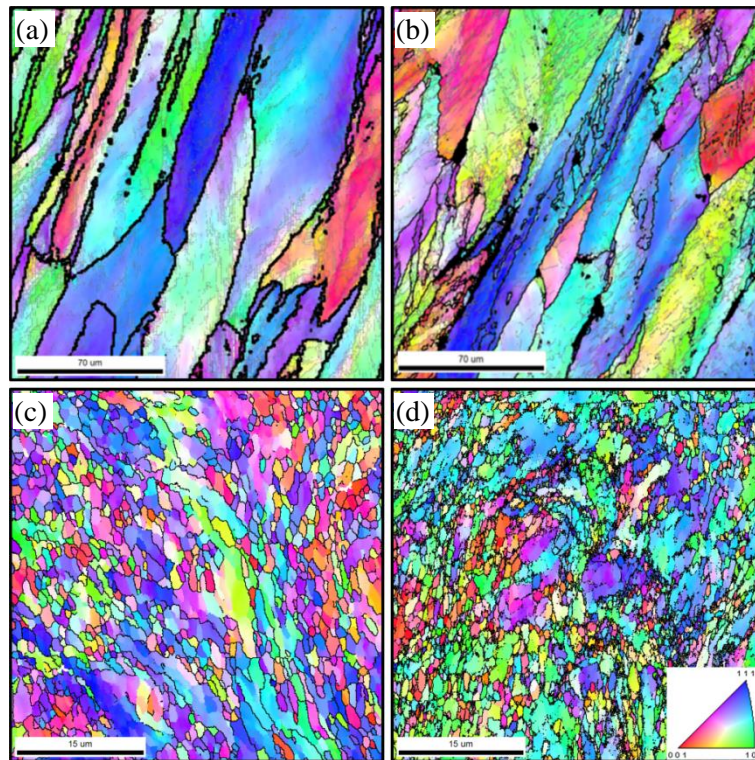


Fig. 2 EBSD images of the ECAP processed Al-8Zn alloy: (a) 1P and (c) 5P; Al-6Bi-8Zn alloy: (b) 1P and (d) 5P, where narrow grey and coarse black lines depict differences between neighbouring grid points $2^\circ < \Theta < 15^\circ$ and $15^\circ < \Theta < 180^\circ$ respectively, and inserted in (d) is the colour code for the orientation maps

After one pass of ECAP, as can be seen from Fig. 2(a) and (b), the coarse equiaxed grains in the initial as-cast state of these two alloys were deformed into elongated grains (several hundred micrometers long) bounded by high angle grain boundaries (HAGBs), mainly aligned at an angle of $\sim 30^\circ$ to the extrusion direction (ED). It can be also seen that many low angle boundaries (LAGBs) and deformation bands were developed in the elongated grains. The formation of such deformation bands is energetically easier for a constrained grain to deform by

splitting into regions, operating on fewer than the five independent slip systems required for homogeneous deformation and strain is distributed over the different bands so as to collectively maintain compatibility with its neighbors [10, 11].

After five passes of ECAP, the coarse elongated grains were refined resulting in an ultrafine equiaxed (sub)grain structure (Fig. 2(c) and (d)). However, it is obvious that there was no bimodal grain structure as that in Al-7Mg [12] processed by ECAP after 3 passes, which may be due to the lower Zn content (in at.%) and the solute strengthening capacity of Zn is much lower than that of Mg. The microstructure evolution during ECAP suggests that the grain refinement is mainly through the formation of subgrain and the progressive transformation of LAGBs into HAGBs in response to increasing strain. In Fig. 2(a) and (b), there were some HAGB segments formed inside of the elongated grains. The formation of discontinuous, short HAGB segments distributed heterogeneously among sub-boundaries of the original grains indicates that continuous dynamic recrystallization (CDRX) has occurred during ECAP [13].

In order to find out the influence of soft Bi particles on the microstructural evolution of Al-6Bi-8Zn alloy, the measured (sub)grain size and HAGB fraction are shown in Fig. 3. From Fig. 3(a), we can see that the grain size of the Al-8Zn alloy at a strain of $\epsilon \sim 5$ (5P) was measured to be $\sim 1 \mu\text{m}$, which was significantly higher than that of the Al-6Bi-8Zn alloy. It implies that the presence of Bi particles significantly promoted grain refinement of the Al-6Bi-8Zn alloy containing Bi particles, resulting in the grain size of $\sim 0.5 \mu\text{m}$ at a strain of $\epsilon \sim 5$ (5P). It is known that in severe plastic deformation (SPD) processing, a steady state grain size is eventually reached at ultra-high strains, which limits the achievable level of grain refinement [14, 15]. This limit is controlled by the mobility of low and high angle grain boundaries. The introduction of second phase particles, which effectively pin grain boundaries, is a method for decreasing the limit grain size [16], allowing an increase in strength. As shown in Fig. 3(b), after one pass of ECAP, the misorientation angle for the Al-8Zn and Al-6Bi-8Zn alloy were still dominated by low angle grain boundaries. The fraction of HAGBs for the Al-6Bi-8Zn alloy was a little lower than that for the Al-8Zn alloy, which could be explained by the fact that at relatively low strains Bi particles contribute to the generation of LAGBs. However, an important feature was the much larger fraction of HAGBs present in the Al-Bi-Zn alloy after three passes and five passes.

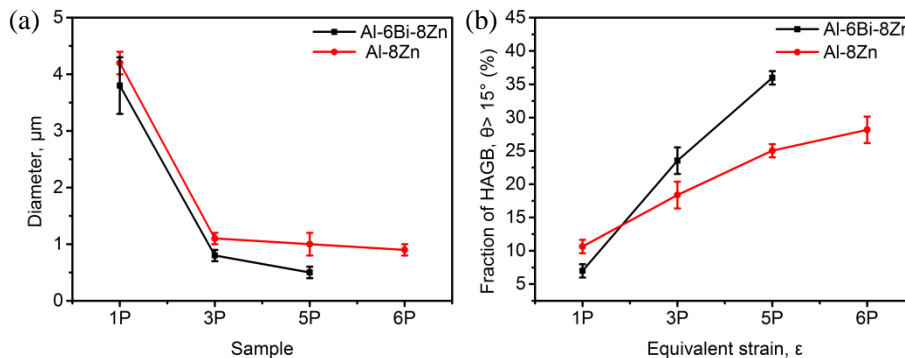


Fig. 3 (a) (Sub)grain size development as a function of increasing number of passes and (b) high angle grain boundary (HAGB) fraction development as a function of increasing number of passes

The generation of HAGBs as well as the development of new fine grains in the interior of original coarse grains of the Al-8Zn and Al-6Bi-8Zn alloy should be attributed to CDRX, which is an extended recovery process that proceeds by continuous absorption of dislocations in subgrain boundaries (LAGBs). During ECAP, LAGBs

increasing the density of HAGB grains. Bi particles were responsible for the much more rapid building up in the fraction of new HAGBs seen at medium to high strains of the Al-6Bi-8Zn alloy, which is similar to the case of large hard intermetallic particles around which complex dislocation structures and particle deformation zone are formed due to the incompatibility between the particles and ductile matrix. However, for composites containing hard particles, there is a shortcoming that during ECAP, they are prone to cracking due to particle breaking-up and void formation around particles, which limits the deformation processing at room temperature (RT) [18]. Thereafter, soft particles can be more favourable for accelerating grain refinement during the SPD process.

3.2. Hardness evolution during ECAP

Fig. 5 shows the hardness evolution of the Al-8Zn and Al-6Bi-8Zn alloys with increasing ECAP process strain.

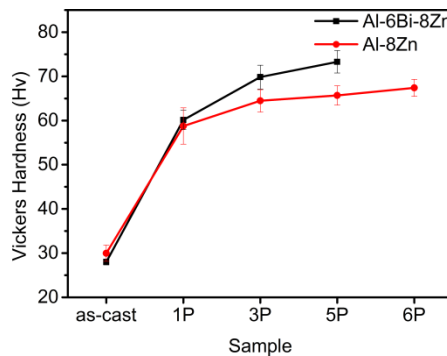


Fig. 5 Comparison of the hardness development for the Al-8Zn and Al-6Bi-8Zn alloys as a function of ECAP passes

In the as-cast state (prior to ECAP processing), the hardness of the Al-6Bi-8Zn alloy was slightly lower than that of the Al-8Zn alloy due to the lower hardness of the soft Bi particles. During ECAP deformation, the hardness of the Al-8Zn alloy saturated much more rapidly than the Al-6Bi-8Zn alloy and reached a plateau at ~ 67 HV at a strain of $\epsilon \sim 3$ (3P), which was consistent with the grain size development in the 3P and 5P sample. In contrast, after the first pass, hardness of the Al-6Bi-8Zn alloy increased faster than the Al-8Zn alloy which means that Bi particles contribute to the generation of dislocations (LAGB and/or HAGBs). During the second to the fifth pass, the hardness of the Al-6Bi-8Zn alloy continued to gradually strain harden up to an effective strain of $\epsilon \sim 5$, resulting in the hardness of ~ 73 HV, which was higher than the Al-8Zn alloy.

4 Conclusions

Al-8Zn and Al-6Bi-8Zn alloys were processed at room temperature by ECAP. After 5 passes, ultrafine grained microstructures formed in both alloys. Ultrafine grains down to $\sim 0.5 \mu\text{m}$ were developed in the Al-6Bi-8Zn alloy which is almost half of the grain size of the Al-8Zn alloy.

1) During ECAP, the original as-cast coarse grains were significantly refined through accelerated CDRX stimulated by the presence of soft Bi particles.

2) After 5 passes of ECAP, a hardness of ~ 73 HV was achieved in the Al-6Bi-8Zn alloy, which was higher than that of the Al-8Zn alloy due to the finer grain size.

References

[1] RATKE L, DIEFENBACH S. Liquid immiscible alloys [J]. Materials Science and Engineering Reports, 1995, 15: 263-347.

- [2] GRUBER-PRETZLER M, MAYER F, WU M, MOISEEV J, TONN B, LUDWIG A, Continuous Casting of Hypermonotectic AlBiZn Alloys: Experimental Investigations and Numerical Simulation, in: Continuous Casting, Wiley-VCH Verlag GmbH & Co. KGaA, 2006, pp. 194-201.
- [3] WANG T, CAO F, CHEN Z, KANG H, ZHU J, FU Y, XIAO T, LI T. Three dimensional microstructures and wear resistance of Al-Bi immiscible alloys with different grain refiners [J]. Science China Technological Sciences, 2015, 58: 870-875.
- [4] SCHAFFER P L, MATHIESEN R H, ARNBERG L. L2 droplet interaction with α -Al during solidification of hypermonotectic Al-8 wt.% Bi alloys [J]. Acta Materialia, 2009, 57: 2887-2895.
- [5] SILVA A P, SPINELLI J E, MANGELINCK-NOËL N, GARCIA A. Microstructural development during transient directional solidification of hypermonotectic Al-Bi alloys [J]. Materials & Design, 2010, 31: 4584-4591.
- [6] SILVA A P, SPINELLI J E, GARCIA A. Microstructural evolution during upward and downward transient directional solidification of hypomonotectic and monotectic Al-Bi alloys [J]. Journal of Alloys and Compounds, 2009, 480: 485-493.
- [7] SILVA A P, SPINELLI J E, GARCIA A. Thermal parameters and microstructure during transient directional solidification of a monotectic Al-Bi alloy [J]. Journal of Alloys and Compounds, 2009, 475: 347-351.
- [8] VALIEV R Z, LANGDON T G. Principles of equal-channel angular pressing as a processing tool for grain refinement [J]. Progress in Materials Science, 2006, 51: 881-981.
- [9] ZHA M, LI Y, MATHIESEN R H, ROVEN H J. Dispersion of soft Bi particles and grain refinement of matrix in an Al-Bi alloy by equal channel angular pressing [J]. Journal of Alloys and Compounds, 2014, 605: 131-136.
- [10] KUHLMANN-WILSDORF D. OVERVIEW No. 131 "Regular" deformation bands (DBs) and the LEDS hypothesis [J]. Acta Materialia, 1999, 47: 1697-1712.
- [11] BAY B, HANSEN N, HUGHES D A, KUHLMANN-WILSDORF D. Overview no. 96 evolution of f.c.c. deformation structures in polyslip [J]. Acta Metallurgica et Materialia, 1992, 40: 205-219.
- [12] ZHA M, LI Y, MATHIESEN R H, BJØRGE R, ROVEN H J. Microstructure evolution and mechanical behavior of a binary Al-7Mg alloy processed by equal-channel angular pressing [J]. Acta Materialia, 2015, 84: 42-54.
- [13] CASTAN C, MONTHEILLET F, PERLADE A. Dynamic recrystallization mechanisms of an Fe-8% Al low density steel under hot rolling conditions [J]. Scripta Materialia, 2013, 68: 360-364.
- [14] HUANG Y, ROBSON J D, PRANGNELL P B. The formation of nanograin structures and accelerated room-temperature θ precipitation in a severely deformed Al-4wt.% Cu alloy [J]. Acta Materialia, 2010, 58: 1643-1657.
- [15] JAZAERI H, HUMPHREYS F J. The transition from discontinuous to continuous recrystallization in some aluminium alloys: I – the deformed state [J]. Acta Materialia, 2004, 52: 3239-3250.
- [16] APPS P J, BERTA M, PRANGNELL P B. The effect of dispersoids on the grain refinement mechanisms during deformation of aluminium alloys to ultra-high strains [J]. Acta Materialia, 2005, 53: 499-511.
- [17] APPS P J, BOWEN J R, PRANGNELL P B. The effect of coarse second-phase particles on the rate of grain refinement during severe deformation processing [J]. Acta Materialia, 2003, 51: 2811-2822.
- [18] MUÑOZ-MORRIS M A, GUTIERREZ-URRUTIA I, MORRIS D G. Effect of equal channel angular pressing on strength and ductility of Al-TiAl composites [J]. Materials Science and Engineering: A, 2005, 396: 3-10.

铋粒子相在大变形过程中对晶粒细化的影响

贾海龙¹, Knut MARTHINSEN¹, 李彦军¹

1. Department of Materials Science and Engineering, Norwegian University of Science and Technology,
Trondheim 7491, Norway

摘要: 通过背散射电子衍射(EBSD)研究了 Al-8Zn 和 Al-6Bi-8Zn 两种合金经 5 道次室温径角挤压(ECAP)过程中的组织演变和晶粒细化行为。经过 5 道次径角挤压, 两种合金都形成了超细晶粒。然而, Al-6Bi-8Zn 合金的晶粒明显小于 Al-8Zn 合金, 说明在径角挤压过程中铋粒子对晶粒细化有明显的作用。通过测定径角挤压后的两种合金的硬度发现, 5 道次之后, Al-6Bi-8Zn 合金的硬度高于 Al-8Zn 合金。此外, 本文讨论了铋粒子在径角挤压过程中对变形行为及最终合金强度的影响。

关键词: 铝合金; 径角挤压; 铋粒子; 晶粒细化; 硬度