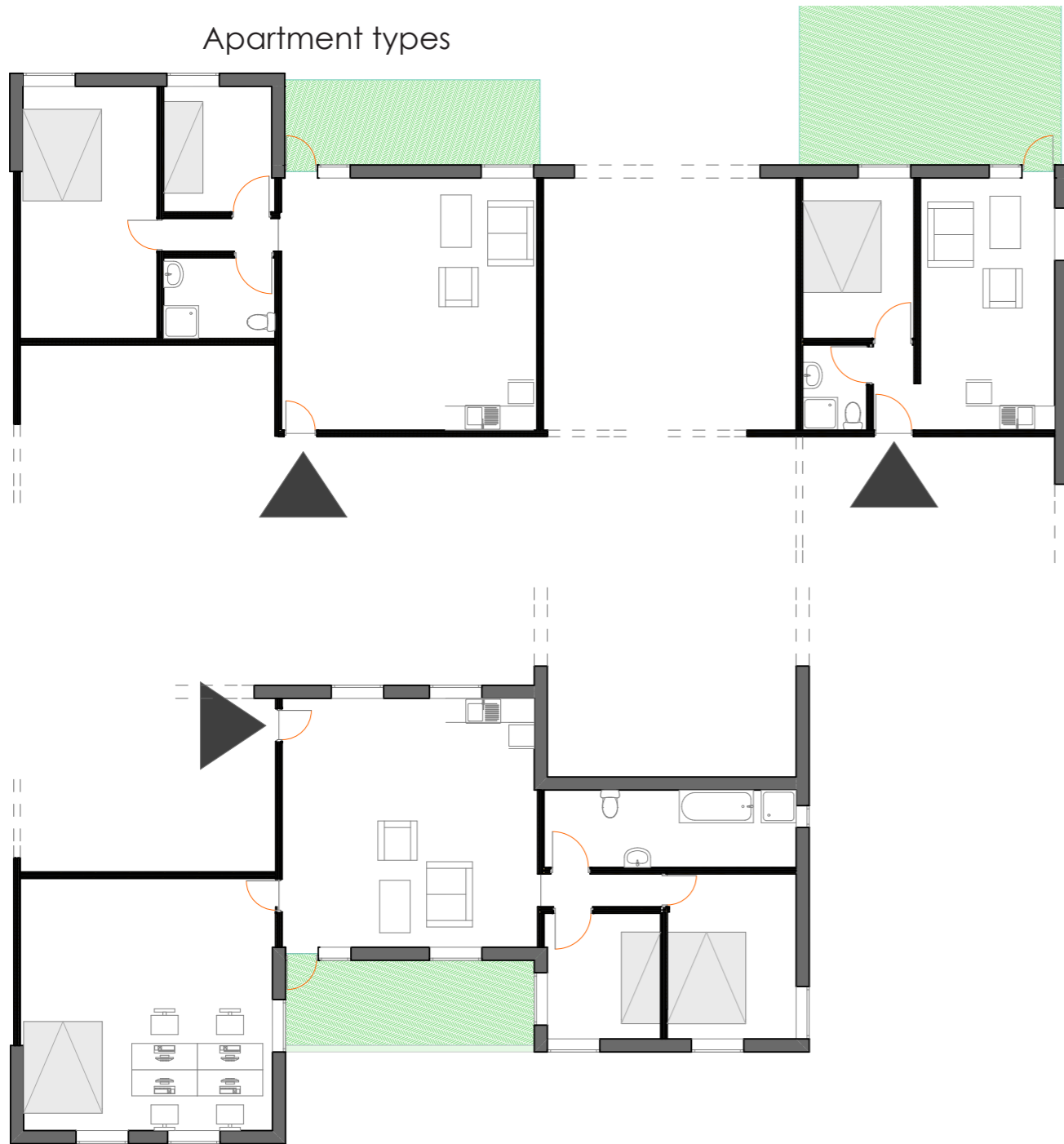


Apartment types



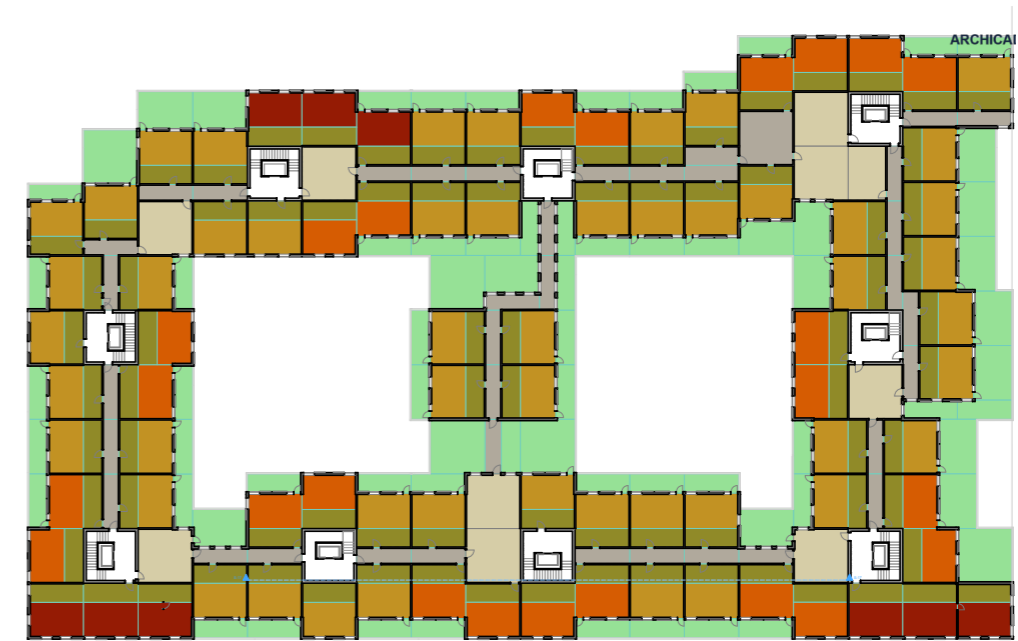
Above to the left: Example of 3-room apartment. Above to the right: Example of 2-room apartment. Below is an example of a 4-room apartment.

I already defined the number of apartments and apartment types in the Calculation of density section. The result is that I decided to split the project in to 4 main modules. Each module will then have:

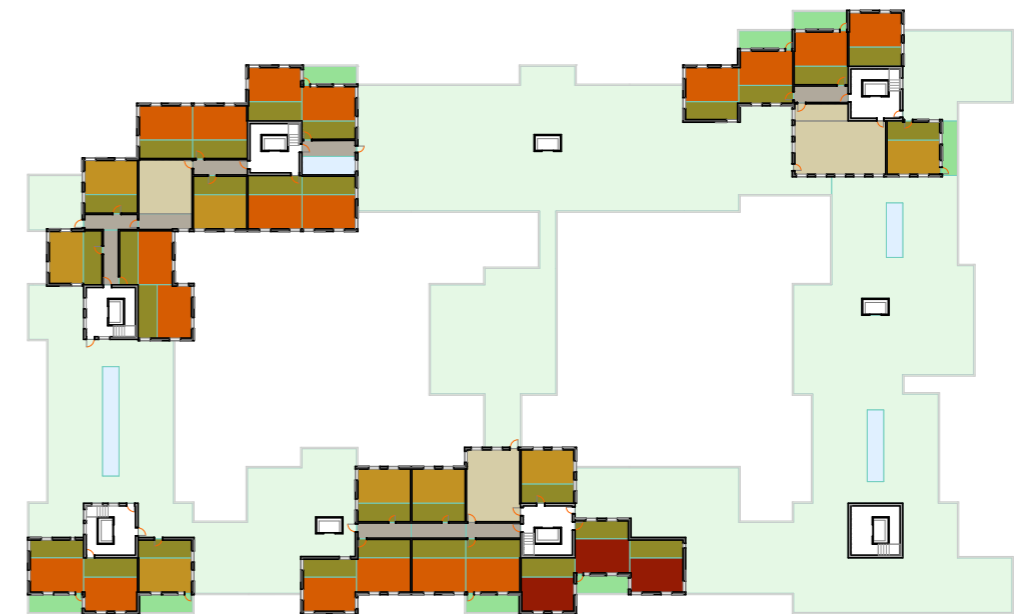
- 15 Two-room apartments
- 5 Three-room apartments
- 1 Four-room apartment
- 2 staircases/elevators.

The modules are designed so that nobody has to go through the common areas to enter their own apartment. The Three- and Four- room apartments can be re-organized so it fits with the overall plan.

Distribution of the apartments:



Distribution of apartments and apartment types, Second floor



Third Floor

