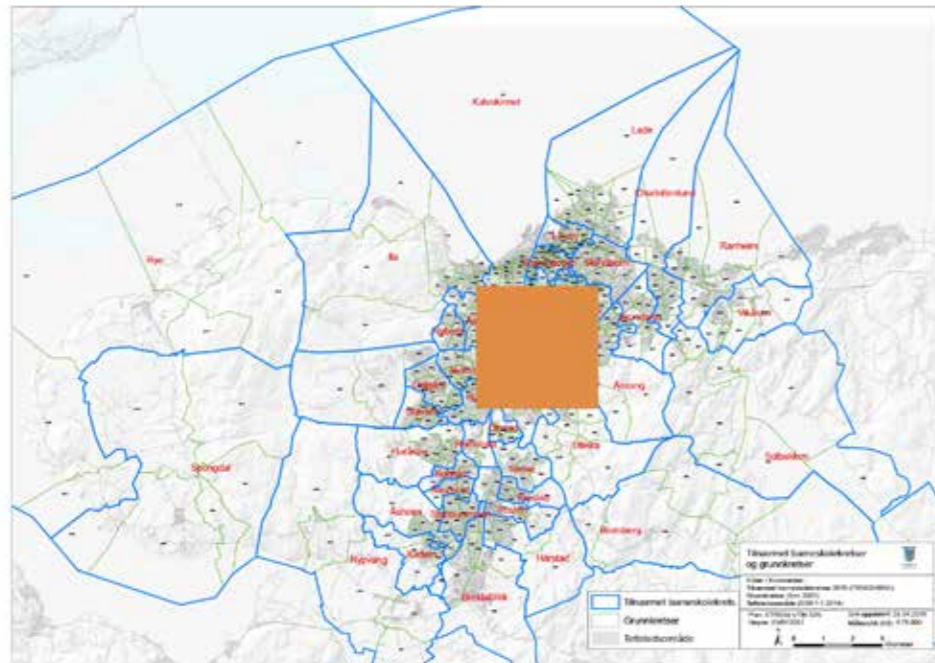
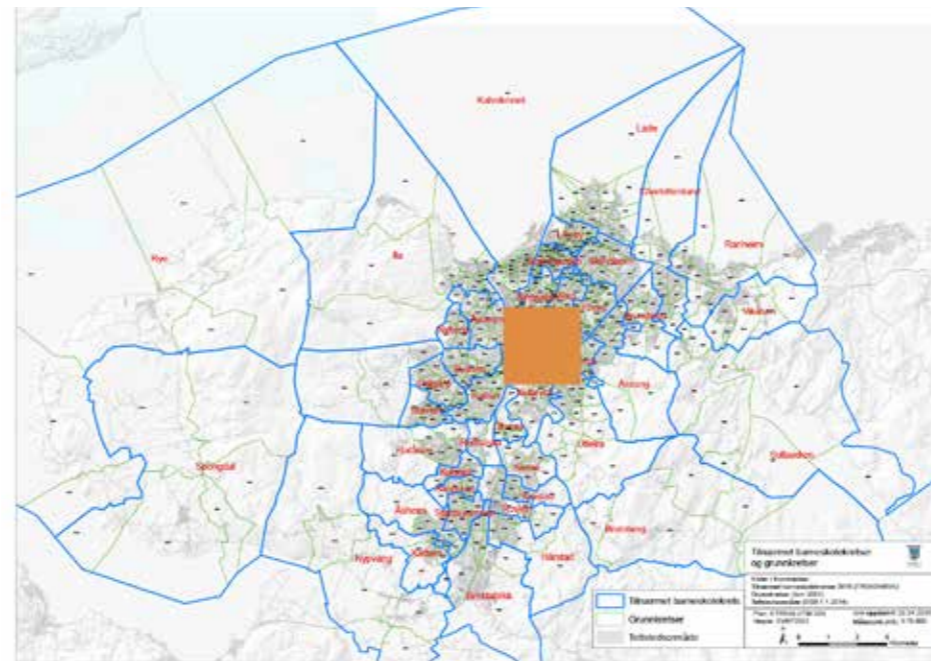


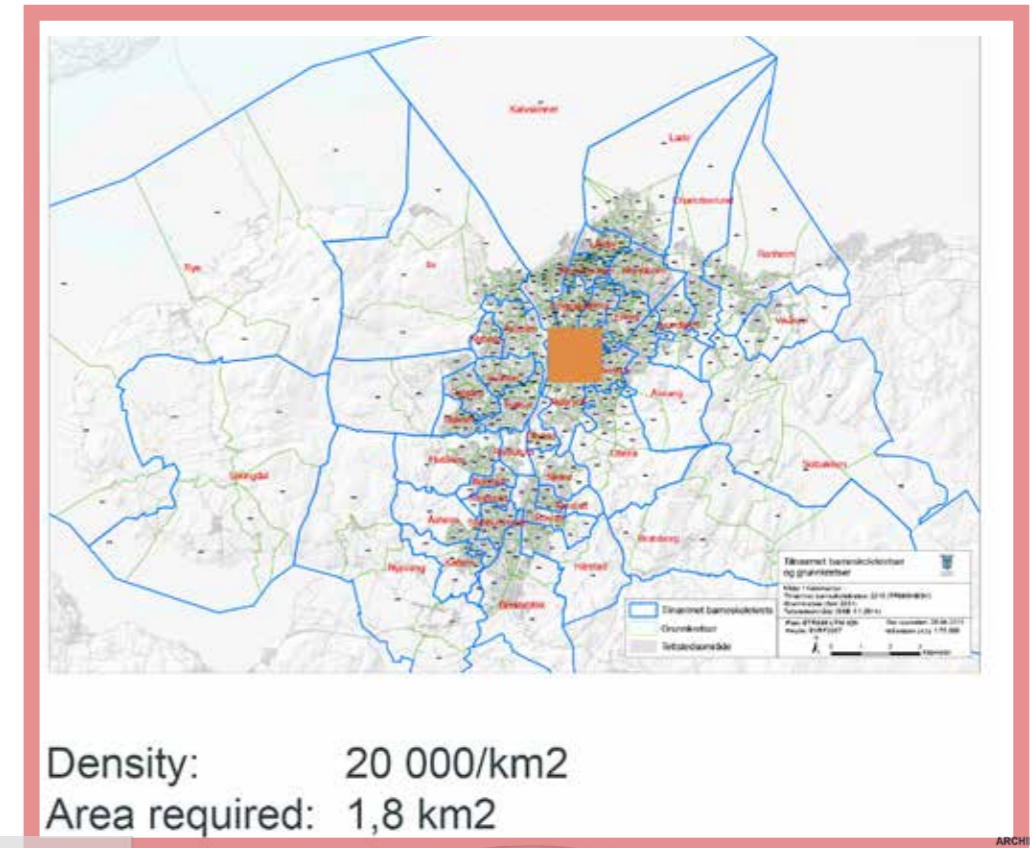
SPACE REQUIRED FOR NEW POPULATION IN TRONDHEIM, 2015 - 2050: 68 000 MORE PEOPLE, ACCORDING TO DENSITY USED:



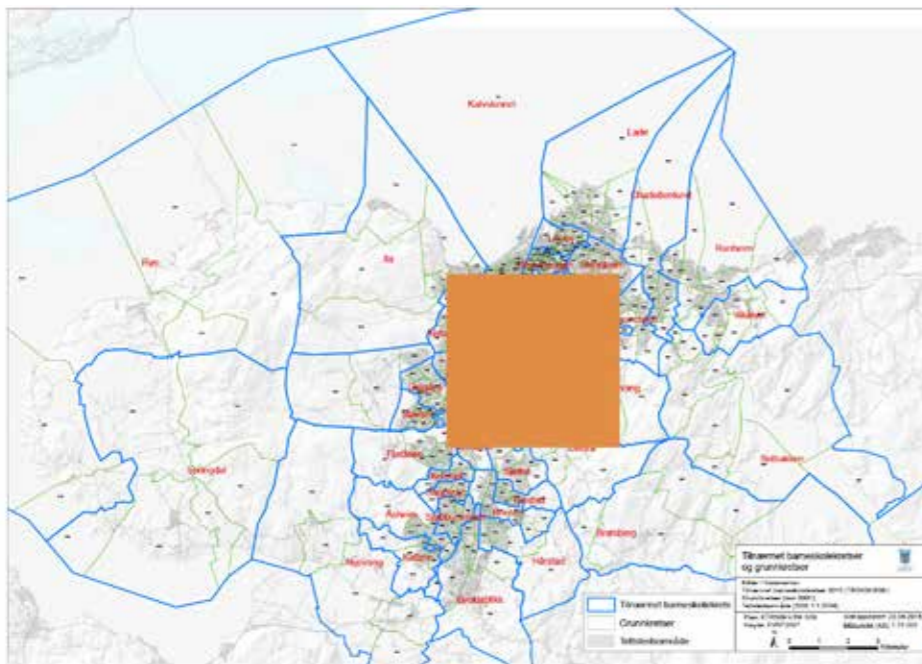
Density: 4000/km2
Area required: 17,0 km2



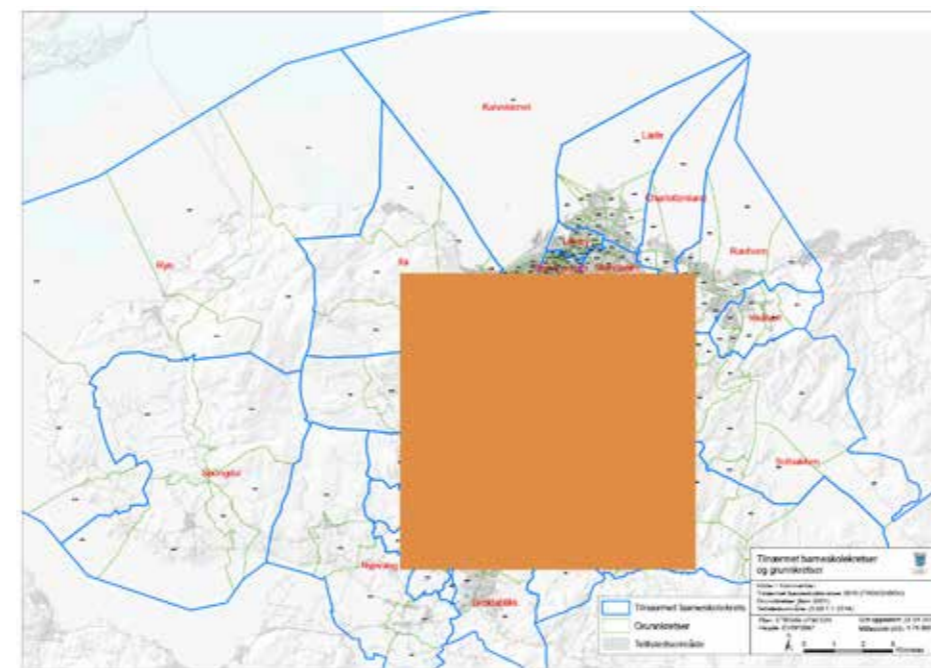
Density: 10 000/km2
Area required: 6,8 km2



Density: 20 000/km2
Area required: 1,8 km2



Density: 2000/km2
Area required: 34,0 km2



Density: 686/km2
Area required: 99,2 km2

