

Source: Trondheim Kommune

Population increase:



POPULATION INCREASE < 0 0 - 1000 1001 - 2000 2001 - 3000 3001 - 4000 > 4000

DEVELOPMENT OF TRONDHEIM THE LAST 15 YEARS: ELEMENTARY SCHOOL ZONES:

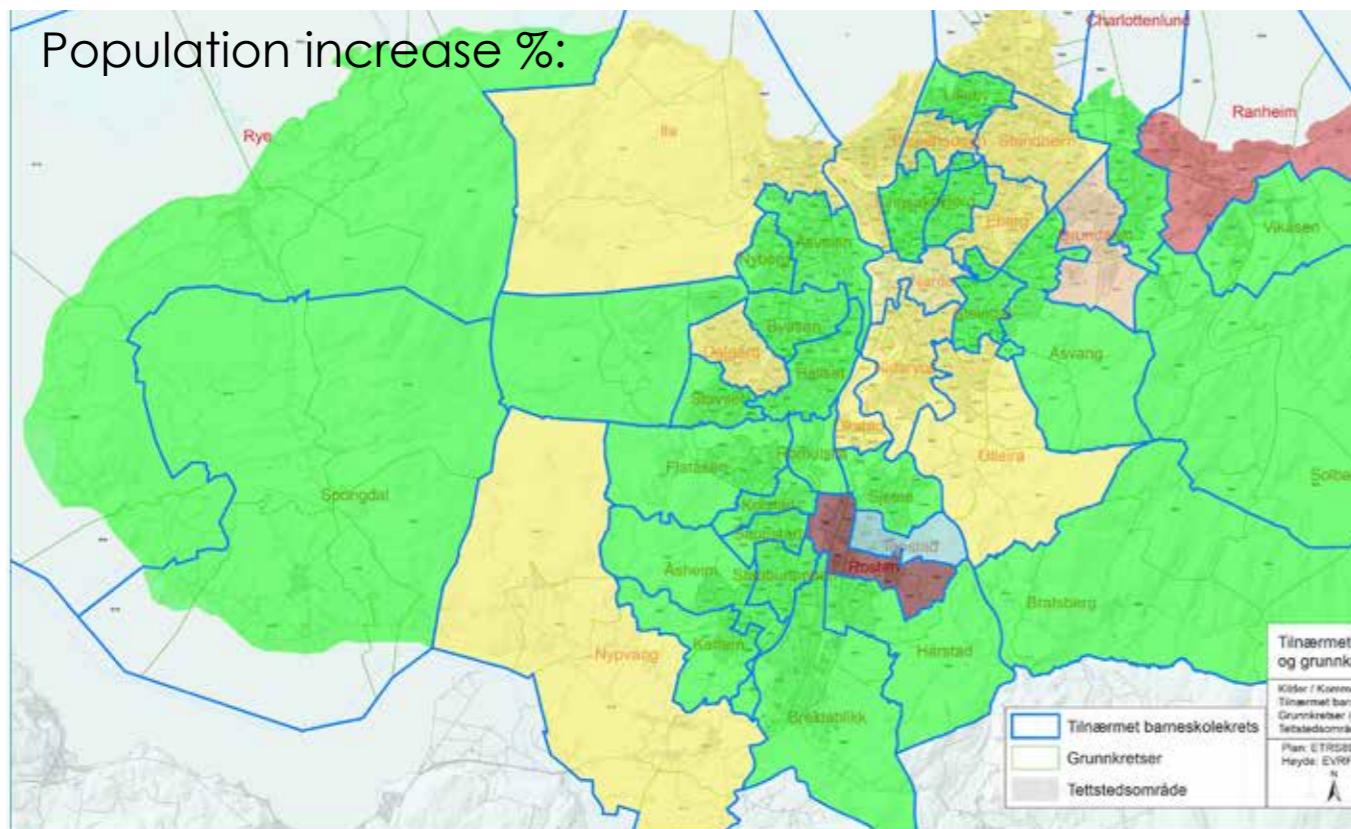
Density people/m²:

Density in Trondheim today:
Density in Trondheim 2050:

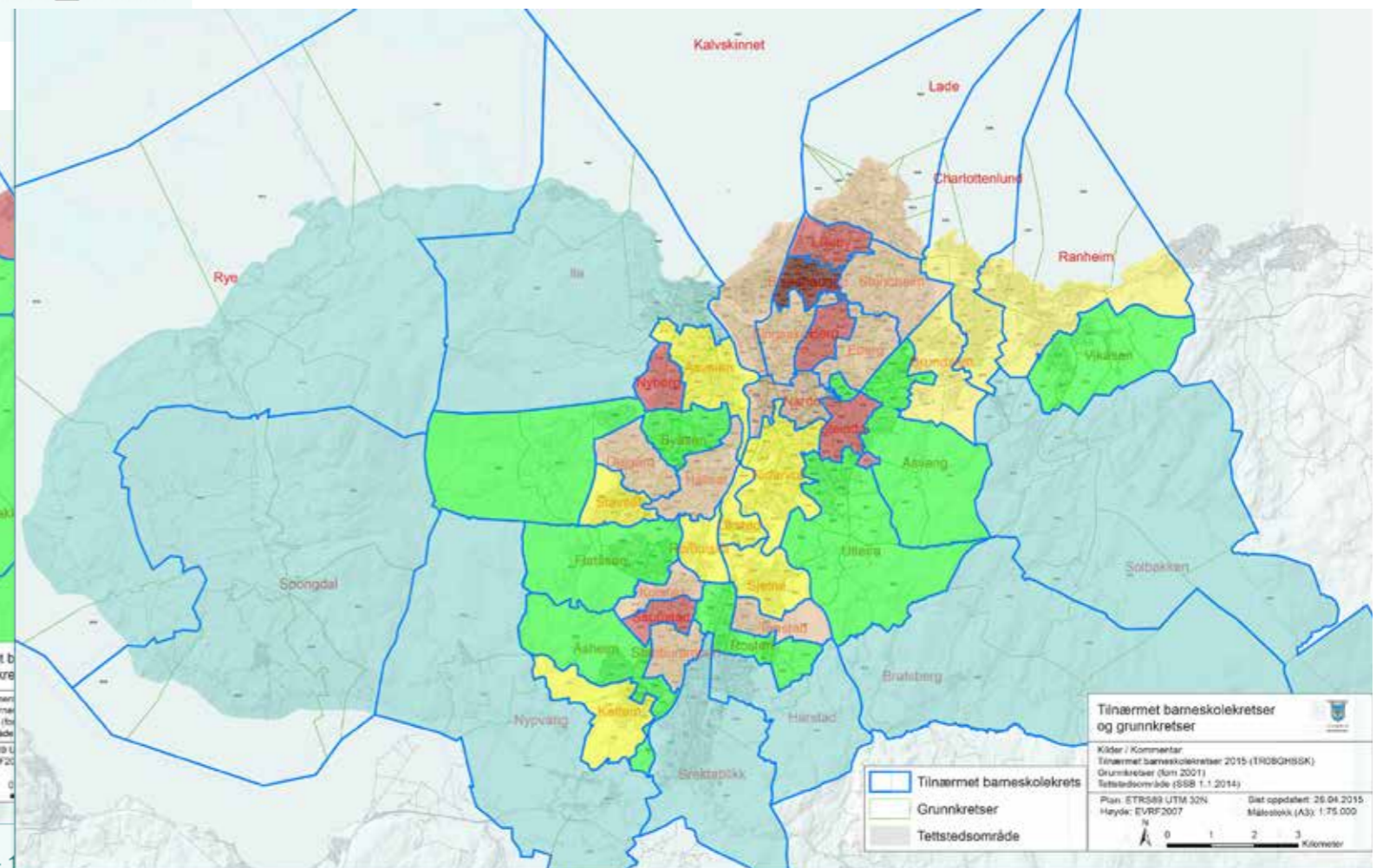
600/m² Average density basic zones: 3000/m²
686/m² Avg. elementary school zones: 1760/m²

We can see that Trondheim is growing in a very sprawled way.

Population increase %:



POPULATION INCREASE % < 0% 0 - 25% 25 - 50% 50 - 75% 75 -



DENSITY, PEOPLE/KM2 0 - 500 501 - 1000 1001 - 2000 2001 - 3000 3001 - 4000 > 4000

It is growing fastest in Ranheim and Rosten, far from the city center. Average densities are as follows: