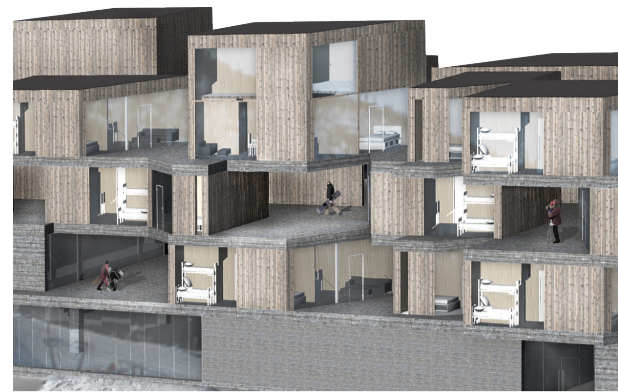


A SKI HOTEL IN HEMSEDAL
Monika Stenholm



part of section A-A
1:400

situation

Hemsedal skiresort is growing and needs another hotel. The mountain destinations will probably soon face the same problems as in the city, where one is forced to condense in the already built area. The Norwegian cabin is a deep-rooted culture and where Norwegians feel most comfortable on their vacation. A hotel on the other hand has a negative connotation but should not necessarily be perceived as violent, big and intrusive on the environment. How to densify in the mountain resorts and at the same time retain the experience, privacy and closeness to nature? My proposal is a hotel with the same feeling as living in a cabin.

definition of the project

Hotel with guestrooms, apartments, spa, restaurant, café etc in the ski resort Hemsedal, Norway.

issue

How to densify in the mountain resorts and at the same time retain the experience and closeness to nature?

intention

Experience. A cabin feeling in a hotel.

hierarchy

1. experience
2. place adaptation
3. densification

design

The building interacts with the ski slope and the living spaces enhance views and give guests private space and a special experience.

It contains a heavy base which is integrated with the landscape. The lighter wooden cabins are stacked on top of the base and on each other. The floor underneath makes terraces for the floor above.

I wanted to avoid the classic monotonous hotel corridors and create a hotel with a more intimate and private feeling. While walking through the corridor you get outlooks and different sizes of the space, which makes it exciting to travel through. The corridors are semi-heated and have entrances that lead

directly to the ski slope or through the reception via elevator and stairs.

To decrease the scale of the common areas I created flexible and open rooms with multiple uses and divisions.

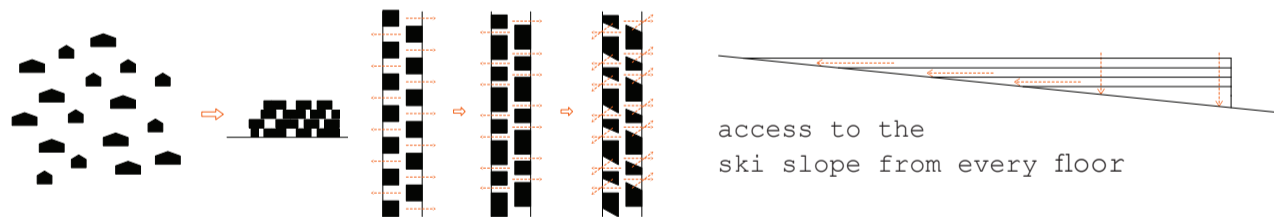
The area around the planned chairlift on the eastern side of the plot will be more populated in the future. This has been taken into account in the design of the building.

the hotel room - a cabin

I have studied a concept based on getting guestrooms perceived as cabins to get a more private feeling than standard hotel rooms.

All cabins have private patios and they are shaped so that they are directed against sunlight and/or views.

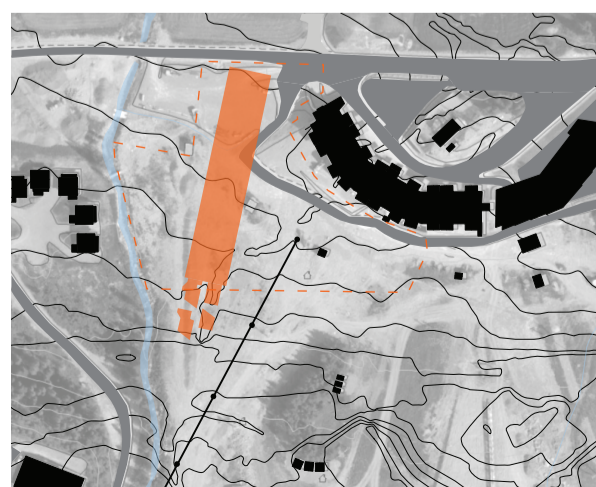
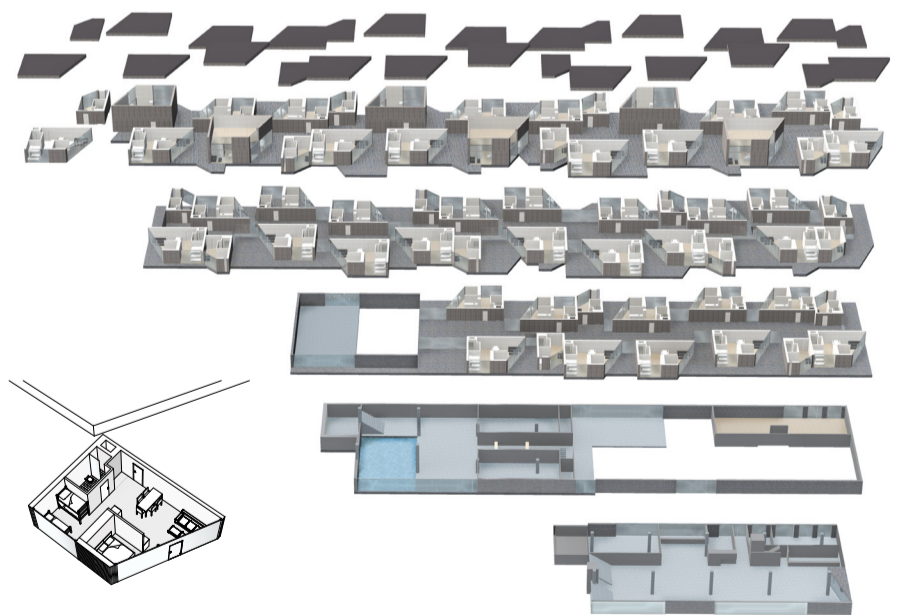
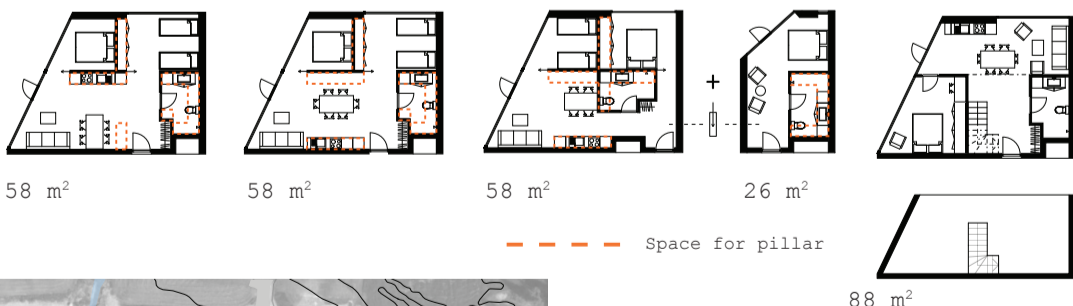
concept



cabin plans

The plans are customized to fit in different positions regarding to the pillars and the situation.

- 6 * 88 m² (6 beds)
 - 40 * 58 m² (6 beds)
 - 19 * 26 m² (2 beds)
- 314 beds



part of site plan 1:4000



construction grid

The pillars are 60*60 cm to fit with the interior standard measures. They are bearing and contain piping.

