

BMJ Open A randomised controlled study of the long-term effects of exercise training on mortality in elderly people: study protocol for the Generation 100 study

Dorthe Stensvold,^{1,2} Hallgeir Viken,^{1,2} Øivind Rognmo,^{1,2} Eirik Skogvoll,^{2,3} Sigurd Steinshamn,^{1,4} Lars J Vatten,^{1,5} Jeff S Coombes,⁶ Sigmund A Anderssen,⁷ Jon Magnussen,⁵ Jan Erik Ingebrigtsen,⁸ Maria A Fiatarone Singh,^{9,10,11} Arnulf Langhammer,⁵ Asbjørn Støylen,^{3,12} Jorunn L Helbostad,^{13,14} Ulrik Wisløff¹

To cite: Stensvold D, Viken H, Rognmo Ø, *et al.* A randomised controlled study of the long-term effects of exercise training on mortality in elderly people: study protocol for the Generation 100 study. *BMJ Open* 2015;**5**:e007519. doi:10.1136/bmjopen-2014-007519

► Prepublication history and additional material is available. To view please visit the journal (<http://dx.doi.org/10.1136/bmjopen-2014-007519>).

Received 27 December 2014
Accepted 16 January 2015



CrossMark

For numbered affiliations see end of article.

Correspondence to

Dr Dorthe Stensvold;
Dorthe.stensvold@ntnu.no

ABSTRACT

Introduction: Epidemiological studies suggest that exercise has a tremendous preventative effect on morbidity and premature death, but these findings need to be confirmed by randomised trials. Generation 100 is a randomised, controlled study where the primary aim is to evaluate the effects of 5 years of exercise training on mortality in an elderly population.

Methods and analysis: All men and women born in the years 1936–1942 (n=6966), who were residents of Trondheim, Norway, were invited to participate. Between August 2012 and June 2013, a total of 1567 individuals (790 women) were included and randomised to either 5 years of two weekly sessions of high-intensity training (10 min warm-up followed by 4×4 min intervals at ~90% of peak heart rate) or, moderate-intensity training (50 min of continuous work at ~70% of peak heart rate), or to a control group that followed physical activity advice according to national recommendations. Clinical examinations, physical tests and questionnaires will be administered to all participants at baseline, and after 1, 3 and 5 years. Participants will also be followed up by linking to health registries until year 2035.

Ethics and dissemination: The study has been conducted according to the SPIRIT statement. All participants signed a written consent form, and the study has been approved by the Regional Committee for Medical Research Ethics, Norway. Projects such as this are warranted in the literature, and we expect that data from this study will result in numerous papers published in world-leading clinical journals; we will also present the results at international and national conferences.

Trial registration number: Clinical trial gov NCT01666340.

BACKGROUND

Owing to worldwide increasing longevity, the world population is rapidly ageing. It has

Strengths and limitations of this study

- This study is the first randomised controlled trial to evaluate the effect of exercise training on morbidity and mortality in an elderly population.
- If proven beneficial, exercise as medicine is an inexpensive, accessible and available treatment with few negative side effects, for the ever-growing ageing population.
- The study is unique due to the large sample size included and because of the long intervention period (5 years).
- Unfortunately, this study did not include participants who could not follow our exercise programme due to safety concerns or disability.

been estimated that the proportion of people aged 60 years and older will double from about 11% in 2000 to 22% in 2050, and the age group 65 years and older will, for first time, outnumber children under the age of 5 by 2017.¹ In Norway, life expectancy in women and men is predicted to increase by 10 years from 83 and 79 years, respectively, over the next 80 years.² Future demands for healthcare services depend on illness and disability in the older population. Active ageing is a term used by WHO to describe “the process of optimizing opportunities for health, participation and security, in order to enhance quality of life and wellbeing as people age”, and includes delay of senescence and compression of morbidity and mortality.³ With societal expectancies of an increasing older population, interventions that compress years with disability alongside increased life expectancy are warranted.⁴ The ageing process is characterised by functional and physiological changes, and includes a decline in activity,⁵ mobility,⁶

maximal oxygen uptake (VO_{2max})⁷ and muscle mass.⁸ In addition, the risk of most diseases, including type 2 diabetes,⁹ pulmonary diseases,¹⁰ cardiovascular diseases,¹¹ cancer,¹² and mental disorders such as depression and dementia,¹³ all increases with age.^{14–15} Physical activity and social engagement have been emphasised as important pathways to improve and maintain health in the elderly.^{16–17} It has been shown that older people who report being inactive reach a disability threshold (defined as needing help from another person to carry out several daily-life activities) 14 years earlier than those who report being highly active.¹⁸ Importantly, becoming physically active even in older age seems to provide health benefits.¹⁹ Randomised, controlled trials have shown that regular exercise training increases fitness^{20–21} and reduces several of the traditional risk factors for cardiovascular disease.^{22–23} It has also been shown that high-intensity exercise training has the potential to induce larger increases in VO_{2max} and cardiovascular function than low-intensity or moderate-intensity training in healthy individuals,^{20–22–24} as well as in people with metabolic syndrome²³ and in those with hypertension, and in patients with heart failure,²⁵ intermittent claudication²⁶ and coronary artery disease.^{27–28} However, reducing traditional risk factors for disease does not necessarily result in longer survival as it has been shown, exemplified by pharmacological interventions, that initial improvements in surrogate markers are not able to show corresponding effects on major end points.^{29–30} Multiple epidemiological studies have suggested that physical activity is associated with a reduced risk of premature death^{31–35} and that poor physical fitness is a strong predictor of mortality.^{36–38} Even a small difference in fitness appears to make a substantial impact on survival.³⁹ Furthermore, epidemiological studies have suggested that physical activity is associated with lower risk for developing diabetes,⁴⁰ hypertension,⁴¹ depression,⁴² dementia,⁴³ breast cancer,⁴⁴ colon cancer⁴⁵ and of accidental falls.⁴⁶

Although many reports suggest that high physical activity and fitness may have favourable health effects, there is a possibility that the level of physical activity is strongly correlated with a person's state of health, and may not be the cause of it. Thus, there is a need for large randomised controlled studies that can test the long-term effects of exercise training on social participation, disability, disease and survival in the general population. The Generation 100 study will be the first large controlled randomised clinical trial where the primary aim is to study effects of exercise training on total mortality in an elderly population. The present paper describes the design and significance of the Generation 100 study.

AIMS

Primary aim of Generation 100

- ▶ To determine the effects of regular exercise training over a 5-year period on overall mortality in elderly people (70–76 years of age).

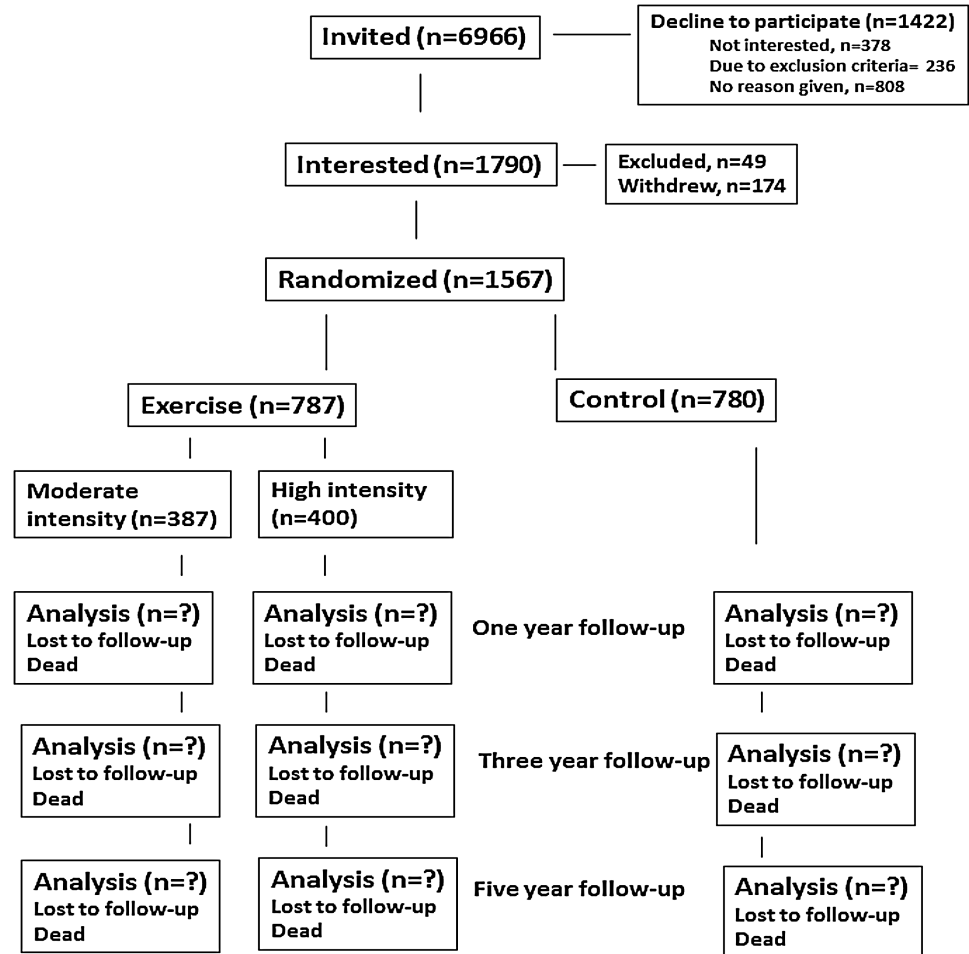
Secondary aims of Generation 100

- ▶ To evaluate the effect of exercise training over a 3-year and 5-year period on social participation, physical function, cognitive function and overall morbidity (new diagnosis and worsening of disease status).
- ▶ To evaluate the effect of high-intensity versus moderate-intensity training over a 3-year and 5-year period on traditional risk factors for cardiovascular disease, maximal oxygen uptake, physical activity level, pulmonary function, muscle strength, gait speed and characteristics, need for prescription medications, falls and fall-related injuries, dementia, depression, fatigue, rate of hospitalisation, and cost and use of healthcare services (general physician, nursing homes and home care).
- ▶ To increase the knowledge regarding genetic predisposition for fitness (VO_{2max}) and cardiovascular diseases in order to facilitate prevention strategies before symptoms appear. We also intend to identify potential therapeutic targets by searching for blood-borne factors induced by training, using transcriptomics (messenger RNAs and microRNAs) and proteomics arrays.

METHODS

Design

This is a phase IIb clinical trial, where the participants are stratified by sex and marital status and randomised 1:1 into an exercise training group or to a control group (figure 1). The exercise training group was further randomised 1:1 into moderate-intensity or high-intensity training. Inclusion started August 2012 and ended in June 2013. The study will run until June 2018. The participants are tested at baseline (before randomisation) and at follow-up after 1, 3 and 5 years. The Unit for Applied Clinical Research at the Norwegian University of Science and Technology developed the randomisation procedure to ensure impartial assignments. After randomisation, participants received verbal and written information about their intervention. Participant data can be linked to the following registries until 2035: Cause of Death Registry, Statistics Norway, Norwegian Patient Register (NPR), National Injury Registry, Cancer Registry of Norway, Norwegian Myocardial Infarction Registry, National Population Register, GERICA (use of municipal care services) and the Norwegian Prescription Database. Generation 100 was registered in a clinical trials registry in August 2012 (ClinicalTrials.gov, Identifier: NCT01666340). All protocol modification must be approved by the Regional Committee for Medical Research Ethics, Norway. Participants are given a project-specific code. This project code is used during all analyses of the data. The procedures for data entry, coding and storage have been developed in close collaboration with the Norwegian Data Inspectorate and the Regional Committee for Medical Research Ethics, Norway. The participants gave informed, written consent to the main study and to receive invitations to

Figure 1 Flow chart of Generation 100.

substudies. Participation in the main study is not influenced by willingness to participate in substudies. All substudies must have approval from the Regional Committee for Medical Research Ethics, and studies will not involve interventions that are in conflict with the main study.

Settings and participants

This study is conducted in Trondheim, the third-most populous municipality in Norway, with a population of 176 348 1 January 2012.⁴⁷ Healthcare is provided predominantly by a public system, financed through general taxes, with no or nominal charge.⁴⁸ All men and women born from 1 January in 1936 to 31 December in 1942, with a permanent address in the municipality of Trondheim (6966 people, 3721 women) were invited to participate (figure 1). Potential participants were identified through the National Population Register. An invitation letter consisting of an informational brochure about the study, a health-related questionnaire and a response sheet with a consent form was sent to potential participants. All individuals were asked to return the response sheet with the consent form and the questionnaire independent of willingness to meet at baseline examinations. Inclusion and exclusion criteria are given in box 1. In total, 46% (3212) responded, 1422 were not

interested while 1790 consented to participate. Of the 1790 people who initially said they were interested, 49 persons were excluded, and 174 actively withdrew or did not show up for testing. Thus, 1567 people, 777 men (72.5±2.1 years) and 790 women (72.5±2.1 years) were included (figure 1). Sample characteristics, based on the questionnaire (see online supplementary file 1) sent out with the invitation letter are shown in table 1. The portion of sedentary behaviour is lower in the participants included in our study compared with those who did not participate. Interestingly, 26% of those who did not want to participate reported to be highly active (almost every day), while the corresponding number among the participants was 22%. In the non-participating group, 32% reported to have higher education (college/university), which is the same percentage as for those who are 67 years and older in the general Norwegian population.⁴⁷ In the participating group, 50% reported to have higher education. In total, 87% of the included participants and 66% in the non-participating group reported to have good health. Thus, the participants in our study are more active, have higher education and better health compared with the non-participating group. In Trondheim, the death rate among those 68–72 years of age was 1.3% in 2010, and among those 70–74 years old, 1.7%. In Norway, the age

**Box 1** Inclusion and exclusion criteria**Inclusion criteria**

- Born during 1936, 1937, 1938, 1939, 1940, 1941 or 1942.
- Able to complete the exercise programme (determined by the researchers).

Exclusion criteria

- Illness or disabilities that preclude exercise or hinder completion of the study.
- Uncontrolled hypertension.
- Symptomatic valvular, hypertrophic cardiomyopathy, unstable angina, primary pulmonary hypertension, heart failure or severe arrhythmia.
- Diagnosed dementia.
- Cancer that makes participation impossible or exercise contra-indicated. Considered individually, in consultation with physician.
- Chronic communicable infectious diseases.
- Test results indicating that study participation is unsafe.
- Participation in other studies conflicting with participation in Generation 100.

of retirement is 67 years, thus we wanted to include people shortly after their working career ended. Initially, people born between 1938 and 1942 (inclusive) were invited. However, acceptance was lower than expected and fewer than 1500 participants were enrolled in the study. Therefore, in order to increase the sample size according to power calculations (see below), we additionally included those born in 1936 and 1937.

Ethics

The risk of exercise is considered very small; however, the risk of complications/death is higher during and immediately following training/testing.⁴⁹ Nevertheless, the health benefits from exercise training are sufficiently high and are considered less harmful than inactivity. The control group will not have access to supervised exercise training. However, they will be advised to follow current national guidelines for physical activity and will not take part in guided training. This reflects the 'treatment' currently offered to the public. Providing sufficient clear information is a high priority, so that participants feel that they know what consenting entails.

Examinations

Figure 2 shows the physical test battery and examinations performed at baseline after 1, 3 and 5 years in all groups. All test personnel were blinded for intervention. Briefly, four different questionnaires are used in this study: Questionnaire 1 was sent out together with the invitation letter, thus those who wanted to participate and those who did not want to participate were both asked to fill out this questionnaire containing 21 health-related questions. Questionnaire 2 consisted of more detailed questions about specific aspects of health, lifestyle, social environment and family medical history. The short form health survey SF-8 (1-week recall version) is used to describe quality of life and chronic pain (Q3). The questions from Q1, Q2 and Q3 have

Table 1 Descriptive statistics of people included in the study and those who did not want to participate

	Included	Not participating	p Values
Number of participants	1567	1361	
Age (years)	72	73	<0.01
Height (cm)	172 (9)	171 (9)	<0.05
Weight (kg)	75 (13)	76 (14)	NS
College/university education (%) (SD)	50	32	<0.01
Current smoker (%)	9	12	<0.01
Self-reported health (%)			<0.01
Poor	13	34	
Good	87	66	
Self-reported diseases (%)			
Myocardial infarction	5	11	<0.01
Angina pectoris	3	7	<0.01
Heart failure	0.7	3	<0.01
Atrial fibrillation	6	12	<0.01
Diabetes mellitus	5	11	<0.01
Cancer	16	19	NS
Mental health problems	9	11	NS
Living condition, percentage of participants			<0.05
Per cent living alone	25	29	
Per cent living with others	75	71	
PA, percentage of participants			
Low	9	16	<0.01
Moderate	69	58	<0.01
High	22	26	<0.05

High, almost every day; low, less than once a week; moderate, 1–3 times per week; NS, non-significant (>0.05); PA, physical activity.

Figure 2 Time points of assessments and the outcome variables measured.

2012/2013	2013/2014	2015/2016	2017/2018
Baseline	One year follow-up	Three years follow-up	Five years follow-up
Examination 1	Examination 2	Examination 3	Examination 4
Blood sample	Blood sample	Blood sample	Blood sample
Blood pressure	Blood pressure	Blood pressure	Blood pressure
Resting heart rate	Resting heart rate	Resting heart rate	Resting heart rate
Weight, height and waistline measurements	Weight, height and waistline measurements	Weight, height and waistline measurements	Weight, height and waistline measurements
Body composition	Body composition	Body composition	Body composition
Questionnaire 1,2,3,4	Questionnaire 2,3,4	Questionnaire 2,3,4	Questionnaire 2,3,4
Walking test	Walking test	Walking test	Walking test
Grip strength test	Grip strength test	Grip strength test	Grip strength test
Leg strength test	Leg strength test	Leg strength test	Leg strength test
Maximal oxygen uptake	Maximal oxygen uptake	Maximal oxygen uptake	Maximal oxygen uptake
Maximal heart rate	Maximal heart rate	Maximal heart rate	Maximal heart rate
Heart rate 1 minute after testing	Heart rate 1 minute after testing	Heart rate 1 minute after testing	Heart rate 1 minute after testing
Physical activity level	Physical activity level	Physical activity level	Physical activity level
Pulmonary function	Pulmonary function	Pulmonary function	Pulmonary function
Cognitive screening	Cognitive screening	Cognitive screening	Cognitive screening

many of the same questions that have been used in the Nord-Trøndelag Health Study (HUNT).^{50–52} In addition, the participants are also asked to fill out a diet form (Q4). Only those who were included in the study fill out questionnaire Q2–Q4. Blood samples are obtained from an arm vein. Serum triglycerides, glucose, high-density lipoprotein, total cholesterol, C reactive protein, glycosylated haemoglobin (HbA1c) and c-peptide are measured immediately using standard procedures at St Olavs Hospital, Trondheim, Norway. Serum and EDTA-treated plasma are centrifuged at 3000 rpm for 10 min at 20°C. Aliquots are stored at –80°C, in case new blood markers will be analysed later. In addition, full blood from EDTA is taken and stored (at Regional Biobank) at –80°C for later DNA analysis. Blood pressure is taken in fasting state at rest and immediately after exercise testing. Testing of VO_{2max} is performed on a treadmill identical to that used in previous studies in our group,²⁵ and participants with previous heart diseases are tested under ECG monitoring, and the American College of Cardiology/American Heart Association (ACC/AHA) guidelines for exercise testing of patients with known cardiovascular disease is followed.⁵³ Body composition and weight are measured using bioelectrical impedance (Inbody 720, BIOSPACE, Seoul, Korea). Gait characteristics are measured by the GAITRite electronic gait mat (CIR Systems Inc, Havertown, Pennsylvania, USA).⁵⁴ Grip and leg strength were measured by the JAMAR Hydraulic Hand Dynamometer (Lafayette Instrument Company, USA) and a leg press machine (FCM 5540 Leg Press Rehab Standard, Helsinki University of Research, HUR, Finland), respectively. Objectively measured physical activity is assessed by SenseWear Armband activity monitor (BodyMedia 7, Pittsburgh, Pennsylvania, USA) or by Actigraph (GT3X, Manufacturing Technology Inc, Florida, USA). After the clinical test at the hospital, all participants are given either SenseWear or Actigraph monitor. The participants are instructed to wear it for 7 days continuously (24 h), except when in contact with

water (shower/bath/swim). The lung function tests are performed with the SensorMedics Vmax22 Encore (CareFusion, San Diego, California, USA) in accordance with the American Thoracic Society/European Respiratory Society (ATS/ERS) recommendations.^{55–56} Cognitive function and brain structure were tested using a combination of questionnaires⁵⁷ and MRI of the brain using 3 T with 32 channel head coil and the following protocol: three-dimensional T1-weighted ADNI, Flair, T2 and SWI volumes, and diffusion tensor imaging. *Novel genetic biomarkers* (serum, plasma, DNA, RNA) will be analysed using high-throughput OMICS technology (genotyping or exome sequencing, DNA methylation, RNA sequencing, microRNA screening, mass spectrometry-based proteomics and MR metabolomics) using validated methods established at Norwegian University of Science and Technology's Genomics, Proteomics and Metabolomics Core Facilities. Health economic analysis will be calculated as the sum of hospital cost (inpatient, day care and outpatient care), use of general physician and primary healthcare (rehabilitation, nursing homes, home care, etc).

Sample size and statistics

Overall mortality was selected as the primary outcome for the sample size calculation. For this purpose, the exercise intervention groups (moderate and high intensity) will be pooled and compared with the control group. Epidemiological studies have reported a 50% lower death rate after 14–16 years of follow-up in people who are active compared with those who are inactive.^{34–58} In Trondheim (2010), 2% of the population between 70 and 77 years old died, and the expected mortality rate after 5 years will be approximately 10%. With a power of 90%, about 600 participants are needed in each group to detect a 50% reduction in mortality (ie, from 10% to 5%). We aimed to include 1500 participants to allow for up to 20% of dropouts. It is unknown, however, whether exercise has an effect on mortality. We therefore focus

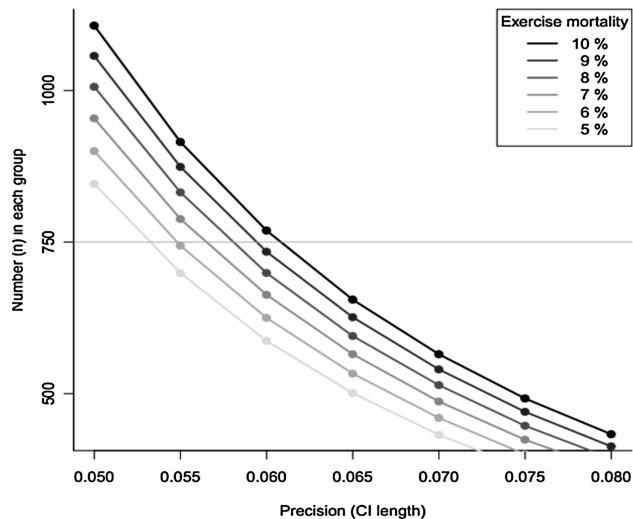


Figure 3 Sample size and precision (expected width of the CI) for different mortality rates in the exercise group. The chosen number (750 in each group) is shown as a horizontal light grey line.

on the *precision* of the estimated absolute mortality group difference in terms of the expected width of the resulting CI for the true difference. With 750 participants in each group, the expected 95% CI width will be between 0.05 and 0.06 depending on the observed mortality in the intervention group (figure 3). We think this precision is acceptable and emphasise that it does not depend on whether the result is statistically significant or not. The comparisons of change between the groups will be made by the intention-to-treat principle. Thus, data will be analysed according to the group that participants are assigned to, regardless of possible crossover and/or adherence to the intervention. In addition, we will perform a per protocol analysis, based on adherence to the intervention. The analysis will be made based on whether participants have followed the prescribed intervention or not. Non-adherence will be defined as having performed less than 50% of the prescribed training sessions over the 5 years. Survival and morbidity analysis will be carried out by performing χ^2 and log-rank tests. Cox regression analyses will be used to compute HRs of all-cause mortality and onset of new diseases between the groups. The precision of the estimates will be assessed by 95% CIs. All statistical tests will be two-sided.

Interventions

High-intensity training

Participants randomised to high-intensity training are asked to complete two weekly ~40 min long workouts. The participants are instructed to use a Borg 6–20 scale (rating of perceived exertion) as guidance for exercise intensity.⁵⁹ They are supervised to perform a light 10 min warm-up, followed by 4 min working periods (intervals) interspersed by 3 min active breaks. The intensity during the intervals should be 85–95% of peak

heart rate, corresponding to approximately 16 on the Borg scale.^{59 60} Breaks consist of working at an intensity corresponding to ~12 on the Borg scale (60–70% of peak heart rate). Every sixth week the participants meet for a supervised spinning session (ergometer cycling) where they exercise with a heart rate monitor, to ensure that they exercise at the recommended intensity, as described above. In addition, organised training is offered twice per week in different walking areas around Trondheim. Attendance to these activities is voluntary, and participants may choose to perform their exercise training individually. The activity type performed will vary between seasons of the year and includes indoor and outdoor activities such as: walking/running, cross-country skiing and aerobics.

Moderate-intensity training

To obtain isocaloric exercise, participants randomised to moderate-intensity training are asked to complete 50 min of continuous moderate-intensity exercise corresponding to 70% of peak heart rate ('talking pace') twice a week.^{27 61} The participants are instructed to use the Borg scale as guidance for exercise intensity, and the exercise intensity should be perceived as approximately 13 on the Borg scale.^{59 60} The protocol regarding frequency and type of exercise was the same as for the high-intensity group.

Control group

The control group will be instructed to follow current recommendations for physical activity in Norway,⁶² meaning 30 min of moderate-level physical activity every day. No further supervision is given.

Adherence

Different strategies are used to improve and evaluate adherence to exercise training. Participants in the exercise groups are asked to fill in exercise logs immediately after each exercise session and send all the logs to the research centre either in prepaid envelopes monthly, or to use internet-based forms following each exercise session.⁶³ The procedures for reporting were prepared after consulting the Regional Committee for Medical and Health Research Ethics and the Data Inspectorate of Norway. To increase motivation, spouses are randomised to the same intervention group. The control group reported their physical activity level once a year, using a questionnaire. All participants are invited to an information meeting once a year, and newsletters are sent out twice a year. The participants can contact the administration of the study by phone or email, and they can find all necessary information about the study and the different interventions on the study's homepage.⁶⁴ An adherence committee was initiated after 1 year. The committee will be responsible for implementing measures that increase adherence in the exercise groups, such as arranging different activity events.

Organisation

The steering committee of Generation 100 has developed the study protocol and is responsible for data collection, management, publications and the final data set. All major scientific and ethical questions will be resolved by majority vote. The committee is responsible for finding solutions to unforeseen questions/problems that arise in the course of the study. In addition, a *Safety committee*, consisting of two physicians, will continuously monitor the safety of the study and the study progression. The first 300 included in the study filled out a safety report 1 month after the initiation of the study. In addition, participants fill out a safety report every year after the initiation of the training. The participants should report if there has been: no special events, worsening of disease, newly diagnosed disease, or if they have been in the hospital. In addition, participants are asked to classify the cause of the event to different diseases/incidents. Furthermore, the Norwegian population registry is checked every year to uncover unreported mortality. Five times during the study, the safety committee will evaluate if there are any differences in the number of events between the groups (1 month, 1 year, 2 year, 3 year and 4 year), and continuously evaluate if it is ethically justifiable to let the study continue. Adverse events during training and testing will be reported to the safety department at the university. The study has one physician (medical director), who will take care of those participants suffering from harm related to participation in the study.

Dissemination

Participants will receive their test result immediately after the test. In addition, participants will be invited to an annual meeting where general and new information will be given. Providing sufficient information to the participants is a high priority. It is anticipated that Generation 100 will garner widespread interest and media attention, and will have results in a series of articles that will be published in highly ranked international scientific journals.

DISCUSSION

To our knowledge, Generation 100 will be the first study with the primary aim of examining whether exercise has an effect on mortality in an older population. Generation 100 is unique because of the large sample size, because the entire population is invited and because of the long intervention period. The descriptive data demonstrate that a larger portion of those who were randomised reported better health, higher education and less heart disease compared with those who did not participate. However, the study consists of a diverse group of elderly people, as healthy people and people with many different diseases are both included. The heart failure-action (HF-action) study was the first large (n=2331, average age 59 years, 661 females) randomised study with the primary aim of evaluating the effect of

exercise alone on all-cause mortality and all-cause hospitalisation.⁶⁵ In contrast to Generation 100, HF-action only included patients with heart failure. After adjusting for highly prognostic predictors, exercise training was associated with a significant, but modest, reduction in mortality and hospitalisation.⁶⁶ However, the intervention in that study included only 36 supervised exercise sessions, followed by home-based exercise, and, importantly, only 38% of the participants in the exercise group fully adhered to exercise after 1 year.⁶⁷ Exercise training with high intensity has previously shown to induce greater cardioprotective effect compared with moderate exercise.^{22 27 47 68} To our knowledge, Generation 100 will be the first study to evaluate the long-term effect of both high-intensity training and moderate intensity on how people age. Longevity seems to be an important health goal for most western countries, and improved health, increased self-reliance and preventing diseases are highlighted as important strategies to reduce the anticipated financial burden of an ageing population.^{1 15} Data from Generation 100 will contribute to an improved understanding and provide solutions on how to achieve active ageing. Further, our data will demonstrate if exercise can be used as a preventive intervention for disease and functional decline, and give more and healthier years to those who are systematically physically active. If proven beneficial, exercise as medicine will be a relatively cheap, accessible and available treatment, with few negative, but a large number of positive side effects that can be offered systematically to a large ageing population. The use of exercise as prevention and treatment will potentially benefit a large proportion of the population, and may give a significant economic benefit both at an individual level and from a societal perspective. In conclusion, Generation 100 will give new knowledge to whether exercise has an impact on morbidity and mortality in elderly people, and further if exercise training has an impact on several major health issues that affect the elderly population. In light of the ageing population, our data will hopefully contribute to a better understanding of ageing, and serve as an example of how to implement large health initiatives in the future.

Author affiliations

¹KG Jebsen Center of Exercise in Medicine at Department of Circulation and Medical Imaging, Faculty of Medicine, Norwegian University of Science and Technology, Trondheim, Norway

²St Olavs Hospital, Trondheim University Hospital, Trondheim, Norway

³Department of Circulation and Medical Imaging, Faculty of Medicine, Norwegian University of Science and Technology, Trondheim, Norway

⁴Department of Thoracic Medicine, St Olavs Hospital, Trondheim University Hospital, Trondheim, Norway

⁵Department of Public Health and General Practice, Faculty of Medicine, Norwegian University of Science and Technology, Trondheim, Norway

⁶School of Human Movement Studies, University of Queensland, Queensland, Australia

⁷Department of Sports Medicine, The Norwegian School of Sport Sciences, Oslo, Norway

⁸Institute for Science in Sport, Norwegian University of Science and Technology, Trondheim, Norway

⁹Exercise Health and Performance Faculty Research Group, Faculty of Health Sciences, The University of Sydney, Lidcombe, Australia

¹⁰Hebrew Senior Life, Boston, Massachusetts, USA

¹¹Jean Mayer USDA Human Nutrition Research Center on Aging at Tufts University, Boston, Massachusetts, USA

¹²Department of Cardiology, St Olavs Hospital, Trondheim University Hospital, Trondheim, Norway

¹³Department of Neuroscience, Faculty of Medicine, Norwegian University of Science and Technology, Trondheim, Norway

¹⁴Clinic for Clinical Services, St. Olavs Hospital, Trondheim University Hospital, Trondheim, Norway

Acknowledgements The authors thank the Clinical Research Facility at St Olavs Hospital for excellent assistance during the testing periods; all master and bachelor students who contributed to collection of data; and SIT (the student organisation in Trondheim), for helping out with locations for spinning sessions.

Contributors All authors meet the ICMJE criteria for authorship. UW and DS take responsibility for the integrity of the study. DS, HV, ØR, ES, SS, LJV, JSC, SAA, JM, JEI, MAFS, AL, AS, JLH and UW were involved in study concept and design. DS, HV, ØR, ES, SS, JEI, AS, JLH and UW were involved in acquisition of data. DS, HV, ØR, ES, SS, LJV, JSC, SAA, JM, JEI, MAFS, AL, AS, JLH and UW were involved in drafting and revising the article critically for important intellectual content. DS, HV, ØR, ES, SS, LJV, JSC, SAA, JM, JEI, MAFS, AL, AS, JLH and UW were involved in final approval of the version to be published.

Funding This work was supported by the Norwegian University for Science and Technology (NTNU), Central Norway Regional Health Authority, St Olavs Hospital, Trondheim, Norway, and The KG Jebsen Foundation.

Competing interests None.

Ethics approval Regional Committee for Medical Research Ethics, Norway (REK 2012/381 B).

Provenance and peer review Not commissioned; internally peer reviewed.

Data sharing statement The authors have collected clinical data from the participants. Quality check needs to be performed on this data before it can be published.

Open Access This is an Open Access article distributed in accordance with the Creative Commons Attribution Non Commercial (CC BY-NC 4.0) license, which permits others to distribute, remix, adapt, build upon this work non-commercially, and license their derivative works on different terms, provided the original work is properly cited and the use is non-commercial. See: <http://creativecommons.org/licenses/by-nc/4.0/>

REFERENCES

- WHO. Ageing and life-course. 28 March 2012.
- Norway S. Befolkningsframskrivinger, 2012–2100. 2014.
- WHO. Active ageing: a policy framework. 2002.
- Fernandez-Ballesteros R, Robine JM, Walker A, *et al*. Active aging: a global goal. *Curr Gerontol Geriatr Res* 2013;2013:298012.
- Hansen BH, Kolle E, Dyrstad SM, *et al*. Accelerometer-determined physical activity in adults and older people. *Med Sci Sports Exerc* 2012;44:266–72.
- Sakari-Rantala R, Avlund K, Frandin K, *et al*. The incidence of mobility restrictions among elderly people in two Nordic localities. A five-year follow-up. *Aging Clin Exp Res* 2002;14(3 Suppl):47–55.
- Aspenes ST, Nilsen TI, Skaug EA, *et al*. Peak oxygen uptake and cardiovascular risk factors in 4,631 healthy women and men. *Med Sci Sports Exerc* 2011;43:1465–73.
- Baumgartner RN, Waters DL, Gallagher D, *et al*. Predictors of skeletal muscle mass in elderly men and women. *Mech Ageing Dev* 1999;107:123–36.
- Midthjell K, Bjorndal A, Holmen J, *et al*. Prevalence of known and previously unknown diabetes mellitus and impaired glucose tolerance in an adult Norwegian population. Indications of an increasing diabetes prevalence. The Nord-Trøndelag Diabetes Study. *Scand J Prim Health Care* 1995;13:229–35.
- Lowery EM, Brubaker AL, Kuhlmann E, *et al*. The aging lung. *Clin Interv Aging* 2013;8:1489–96.
- Ellekjaer H, Holmen J, Indredavik B, *et al*. Epidemiology of stroke in Innherred, Norway, 1994 to 1996. Incidence and 30-day case-fatality rate. *Stroke* 1997;28:2180–4.
- Hoffe S, Balducci L. Cancer and age: general considerations. *Clin Geriatr Med* 2012;28:1–18.
- Ott A, Breteler MM, van Harskamp F, *et al*. Incidence and risk of dementia. The Rotterdam Study. *Am J Epidemiol* 1998;147:574–80.
- WHO. 50 Facts: Global health situation and trends 1955–2025. 1998.
- Elisabeth U. Seniorer i Norge. Rapport for statistisk sentralbyrå. 2005.
- Montero-Fernandez N, Serra-Rexach JA. Role of exercise on sarcopenia in the elderly. *Eur J Phys Rehabil Med* 2013;49:131–43.
- Chodzko-Zajko WJ, Proctor DN, Fatarone Singh MA, *et al*. American College of Sports Medicine. American College of Sports Medicine position stand. Exercise and physical activity for older adults. *Med Sci Sports Exerc* 2009;41:1510–30.
- Peeters G, Dobson AJ, Deeg DJ, *et al*. A life-course perspective on physical functioning in women. *Bull World Health Organ* 2013;91:661–70.
- Hamer M, Lavoie KL, Bacon SL. Taking up physical activity in later life and healthy ageing: the English longitudinal study of ageing. *Br J Sports Med* 2014;48:239–43.
- Helgerud J, Hoydal K, Wang E, *et al*. Aerobic high-intensity intervals improve VO₂max more than moderate training. *Med Sci Sports Exerc* 2007;39:665–71.
- Gormley SE, Swain DP, High R, *et al*. Effect of intensity of aerobic training on VO₂max. *Med Sci Sports Exerc* 2008;40:1336–43.
- Swain DP, Franklin BA. Comparison of cardioprotective benefits of vigorous versus moderate intensity aerobic exercise. *Am J Cardiol* 2006;97:141–7.
- Tjonna AE, Lee SJ, Rognmo O, *et al*. Aerobic interval training versus continuous moderate exercise as a treatment for the metabolic syndrome: a pilot study. *Circulation* 2008;118:346–54.
- Gaesser GA, Rich RG. Effects of high- and low-intensity exercise training on aerobic capacity and blood lipids. *Med Sci Sports Exerc* 1984;16:269–74.
- Wisloff U, Stoylen A, Loennechen JP, *et al*. Superior cardiovascular effect of aerobic interval training versus moderate continuous training in heart failure patients: a randomized study. *Circulation* 2007;115:3086–94.
- Stordahl SA, Wang E, Hoff J, *et al*. Effective training for patients with intermittent claudication. *Scand Cardiovasc J* 2005;39:244–9.
- Rognmo O, Hetland E, Helgerud J, *et al*. High intensity aerobic interval exercise is superior to moderate intensity exercise for increasing aerobic capacity in patients with coronary artery disease. *Eur J Cardiovasc Prev Rehabil* 2004;11:216–22.
- Amundsen BH, Rognmo O, Hatlen-Rebhan G, *et al*. High-intensity aerobic exercise improves diastolic function in coronary artery disease. *Scand Cardiovasc J* 2008;42:110–17.
- Packer M, Carver JR, Rodeheffer RJ, *et al*. Effect of oral milrinone on mortality in severe chronic heart failure. The PROMISE Study Research Group. *N Engl J Med* 1991;325:1468–75.
- Califf RM, Adams KF, McKenna WJ, *et al*. A randomized controlled trial of epoprostenol therapy for severe congestive heart failure: The Fiolan International Randomized Survival Trial (FIRST). *Am Heart J* 1997;134:44–54.
- Blair SN, Kohl HW III, Paffenbarger RS Jr, *et al*. Physical fitness and all-cause mortality. A prospective study of healthy men and women. *JAMA* 1989;262:2395–401.
- Paffenbarger RS Jr, Hyde RT, Wing AL, *et al*. Physical activity, all-cause mortality, and longevity of college alumni. *N Engl J Med* 1986;314:605–13.
- Lee IM, Sesso HD, Oguma Y, *et al*. The “weekend warrior” and risk of mortality. *Am J Epidemiol* 2004;160:636–41.
- Wisloff U, Nilsen TI, Droyvold WB, *et al*. A single weekly bout of exercise may reduce cardiovascular mortality: how little pain for cardiac gain? ‘The HUNT study, Norway’. *Eur J Cardiovasc Prev Rehabil* 2006;13:798–804.
- Oguma Y, Sesso HD, Paffenbarger RS Jr, *et al*. Physical activity and all cause mortality in women: a review of the evidence. *Br J Sports Med* 2002;36:162–72.
- Lee DC, Sui X, Ortega FB, *et al*. Comparisons of leisure-time physical activity and cardiorespiratory fitness as predictors of all-cause mortality in men and women. *Br J Sports Med* 2011;45:504–10.
- Kavanagh T, Mertens DJ, Hamm LF, *et al*. Prediction of long-term prognosis in 12 169 men referred for cardiac rehabilitation. *Circulation* 2002;106:666–71.

38. Keteyian SJ, Brawner CA, Savage PD, *et al.* Peak aerobic capacity predicts prognosis in patients with coronary heart disease. *Am Heart J* 2008;156:292–300.
39. Myers J, Prakash M, Froelicher V, *et al.* Exercise capacity and mortality among men referred for exercise testing. *N Engl J Med* 2002;346:793–801.
40. Albright A, Franz M, Hornsby G, *et al.* American College of Sports Medicine position stand. Exercise and type 2 diabetes. *Med Sci Sports Exerc* 2000;32:1345–60.
41. Pescatello LS, Franklin BA, Fagard R, *et al.* American College of Sports Medicine position stand. Exercise and hypertension. *Med Sci Sports Exerc* 2004;36:533–53.
42. Pollock KM. Exercise in treating depression: broadening the psychotherapist's role. *J Clin Psychol* 2001;57:1289–300.
43. Aarsland D, Sardaahae FS, Anderssen S, *et al.* Is physical activity a potential preventive factor for vascular dementia? A systematic review. *Aging Ment Health* 2010;14:386–95.
44. Lynch BM, Neilson HK, Friedenreich CM. Physical activity and breast cancer prevention. *Recent Results Cancer Res* 2011;186:13–42.
45. Lee IM. Physical activity and cancer prevention—data from epidemiologic studies. *Med Sci Sports Exerc* 2003;35:1823–7.
46. Sherrington C, Whitney JC, Lord SR, *et al.* Effective exercise for the prevention of falls: a systematic review and meta-analysis. *J Am Geriatr Soc* 2008;56:2234–43.
47. Statistics Norway. <https://www.ssb.no/statistikkbanken/selecttable/hovedtabellHjem.asp?KortNavnWeb=folkendrhist&CMSSubjectArea=befolkning&checked=true>
48. Ringard A, Sagan A, Sperre Saunes I, *et al.* Norway: health system review. *Health Syst Transit* 2013;15:1–162.
49. Mittleman MA, Maclure M, Tofler GH, *et al.* Triggering of acute myocardial infarction by heavy physical exertion. Protection against triggering by regular exertion. Determinants of Myocardial Infarction Onset Study Investigators. *N Engl J Med* 1993;329:1677–83.
50. HUNT Research Center. <http://www.ntnu.edu/hunt/data/que>
51. Bertheussen GF, Romundstad PR, Landmark T, *et al.* Associations between physical activity and physical and mental health—a HUNT 3 study. *Med Sci Sports Exerc* 2011;43:1220–8.
52. Landmark T, Romundstad P, Dale O, *et al.* Estimating the prevalence of chronic pain: validation of recall against longitudinal reporting (the HUNT pain study). *Pain* 2012;153:1368–73.
53. Gibbons RJ, Balady GJ, Beasley JW, *et al.* ACC/AHA guidelines for exercise testing. A report of the American College of Cardiology/American Heart Association Task Force on Practice Guidelines (Committee on Exercise Testing). *J Am Coll Cardiol* 1997;30:260–311.
54. Menz HB, Latt MD, Tiedemann A, *et al.* Reliability of the GAITrite walkway system for the quantification of temporo-spatial parameters of gait in young and older people. *Gait Posture* 2004;20:20–5.
55. Miller MR, Hankinson J, Brusasco V, *et al.* Standardisation of spirometry. *Eur Respir J* 2005;26:319–38.
56. Macintyre N, Crapo RO, Viegi G, *et al.* Standardisation of the single-breath determination of carbon monoxide uptake in the lung. *Eur Respir J* 2005;26:720–35.
57. Folstein MF, Folstein SE, McHugh PR. "Mini-mental state". A practical method for grading the cognitive state of patients for the clinician. *J Psychiatr Res* 1975;12:189–98.
58. Andersen LB, Schnohr P, Schroll M, *et al.* All-cause mortality associated with physical activity during leisure time, work, sports, and cycling to work. *Arch Intern Med* 2000;160:1621–8.
59. Borg GA. Psychophysical bases of perceived exertion. *Med Sci Sports Exerc* 1982;14:377–81.
60. Nes BM, Janszky I, Aspenes ST, *et al.* Exercise patterns and peak oxygen uptake in a healthy population: the HUNT study. *Med Sci Sports Exerc* 2012;44:1881–9.
61. Bronstad E, Tjonna AE, Rognmo O, *et al.* Aerobic exercise training improves right- and left ventricular systolic function in patients with COPD. *COPD* 2013;10:300–6.
62. Helsedirektoratet. Folkehelse: Fysisk aktivitet: Anbefalinger. 2011.
63. LimeSurvey: Training Logs Generation 100. <https://survey.medisin.ntnu.no/limesurvey/index.php?sid=54583>
64. Generation 100 homepage. <http://www.ntnu.edu/research>
65. Whellan DJ, O'Connor CM, Lee KL, *et al.* Heart failure and a controlled trial investigating outcomes of exercise training (HF-ACTION): design and rationale. *Am Heart J* 2007;153:201–11.
66. O'Connor CM, Whellan DJ, Lee KL, *et al.* Efficacy and safety of exercise training in patients with chronic heart failure: HF-ACTION randomized controlled trial. *JAMA* 2009;301:1439–50.
67. Keteyian SJ, Pina IL, Hibner BA, *et al.* Clinical role of exercise training in the management of patients with chronic heart failure. *J Cardiopulm Rehabil Prev* 2010;30:67–76.
68. Molmen HE, Wisloff U, Aamot IL, *et al.* Aerobic interval training compensates age related decline in cardiac function. *Scand Cardiovasc J* 2012;46:163–71.

BMJ Open

A randomised controlled study of the long-term effects of exercise training on mortality in elderly people: study protocol for the Generation 100 study

Dorthe Stensvold, Hallgeir Viken, Øivind Rognmo, Eirik Skogvoll, Sigurd Steinshamn, Lars J Vatten, Jeff S Coombes, Sigmund A Anderssen, Jon Magnussen, Jan Erik Ingebrigtsen, Maria A Fiatarone Singh, Arnulf Langhammer, Asbjørn Støylen, Jorunn L Helbostad and Ulrik Wisløff

BMJ Open 2015 5:
doi: 10.1136/bmjopen-2014-007519

Updated information and services can be found at:
<http://bmjopen.bmj.com/content/5/2/e007519>

These include:

- Supplementary Material** Supplementary material can be found at:
<http://bmjopen.bmj.com/content/suppl/2015/02/12/bmjopen-2014-007519.DC1.html>
- References** This article cites 58 articles, 11 of which you can access for free at:
<http://bmjopen.bmj.com/content/5/2/e007519#BIBL>
- Open Access** This is an Open Access article distributed in accordance with the Creative Commons Attribution Non Commercial (CC BY-NC 4.0) license, which permits others to distribute, remix, adapt, build upon this work non-commercially, and license their derivative works on different terms, provided the original work is properly cited and the use is non-commercial. See: <http://creativecommons.org/licenses/by-nc/4.0/>
- Email alerting service** Receive free email alerts when new articles cite this article. Sign up in the box at the top right corner of the online article.
-

- Topic Collections** Articles on similar topics can be found in the following collections
- [Geriatric medicine](#) (137)
 - [Public health](#) (1230)
 - [Sports and exercise medicine](#) (130)
-

Notes

To request permissions go to:
<http://group.bmj.com/group/rights-licensing/permissions>

To order reprints go to:
<http://journals.bmj.com/cgi/reprintform>

To subscribe to BMJ go to:
<http://group.bmj.com/subscribe/>