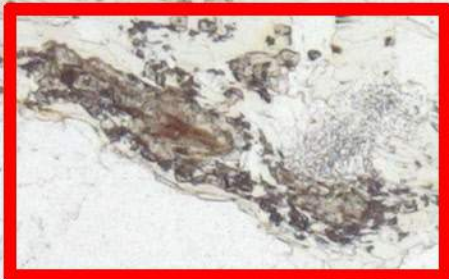


P01 circle 1

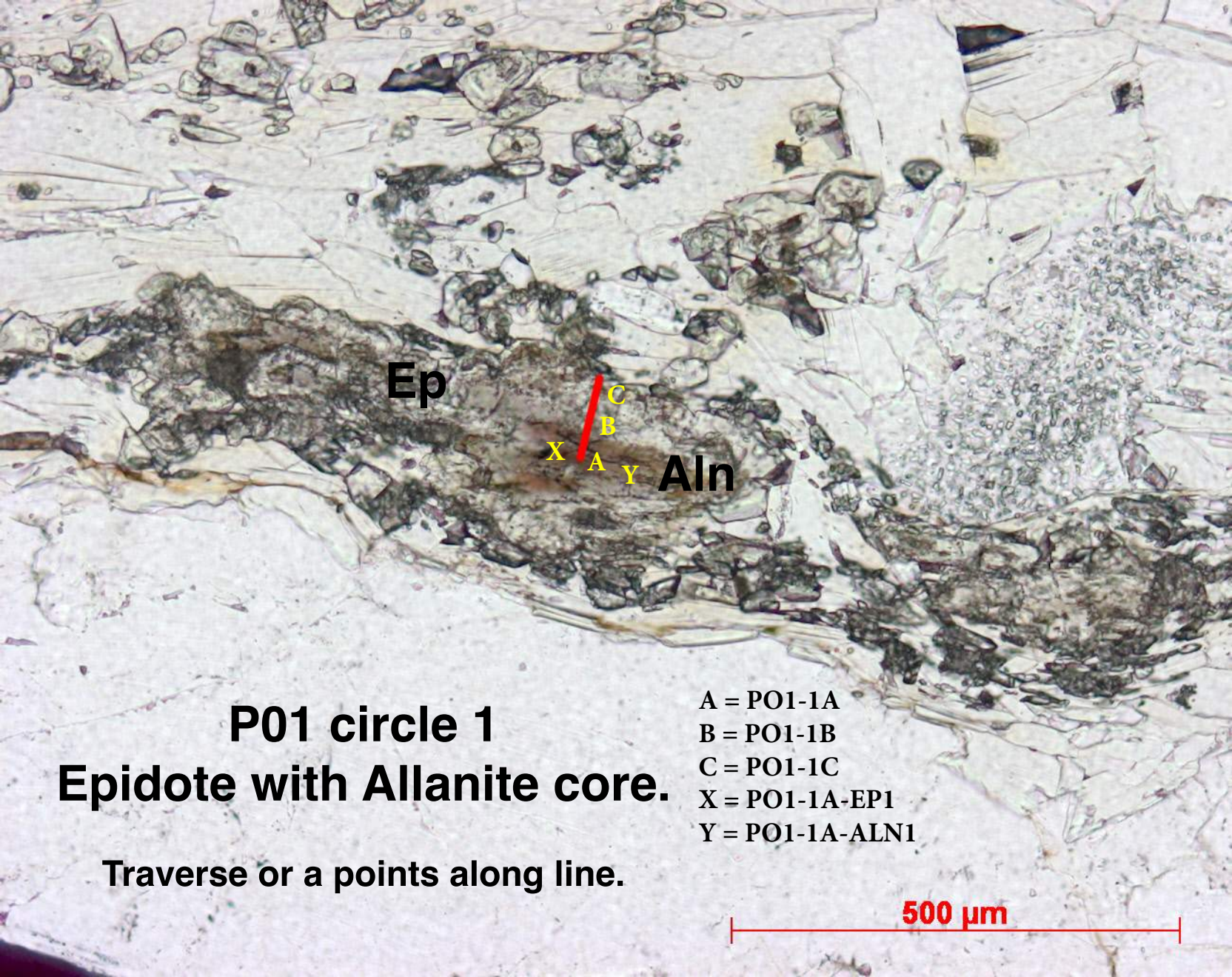


**Epidote w/
Allanite core**

Titanite



1000 μm



Ep

Aln

X

A

Y

C

B

P01 circle 1
Epidote with Allanite core.

Traverse or a points along line.

A = PO1-1A
B = PO1-1B
C = PO1-1C
X = PO1-1A-EP1
Y = PO1-1A-ALN1

500 μ m

P01 circle 1 Titanite

3 points

Ttn

A = PO1-2a

B = PO1-2b

C = PO1-2c

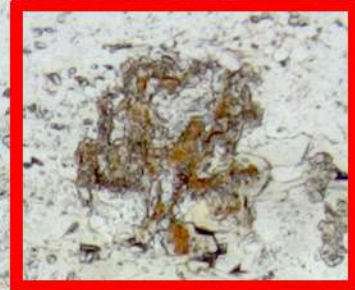
1 = PO1-1B-TNT1

2 = PO1-1B-TNT2

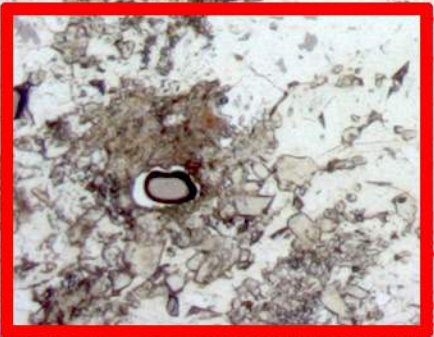
3 = PO1-1B-TNT3

500 μm

P01 circle 2



**Epidote and
Allanite**



**Epidote and
Allanite**

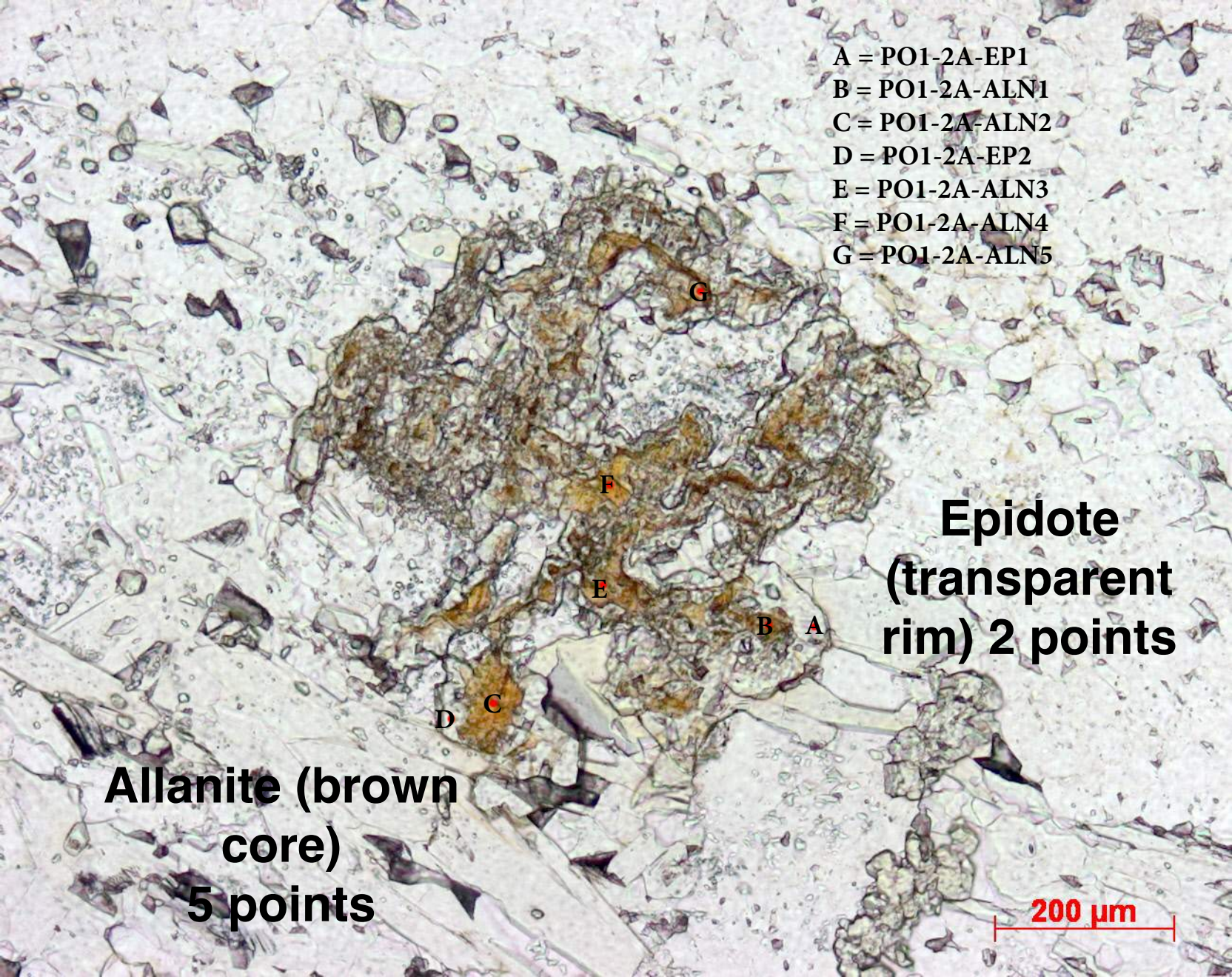
1000 μm

A = PO1-2A-EP1
B = PO1-2A-ALN1
C = PO1-2A-ALN2
D = PO1-2A-EP2
E = PO1-2A-ALN3
F = PO1-2A-ALN4
G = PO1-2A-ALN5

**Epidote
(transparent
rim) 2 points**

**Allanite (brown
core)
5 points**

200 μ m

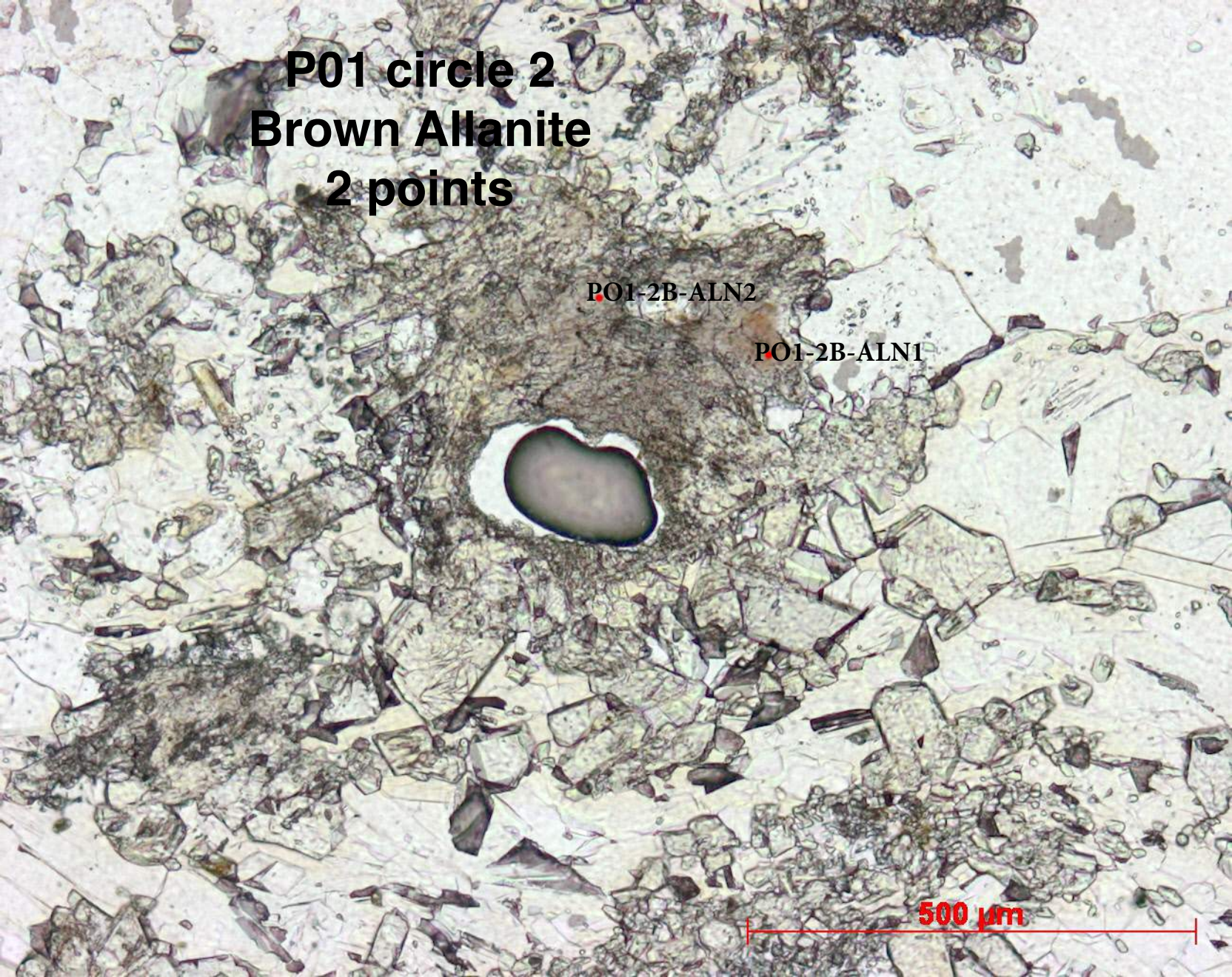


P01 circle 2
Brown Allanite
2 points

PO1-2B-ALN2

PO1-2B-ALN1

500 μm

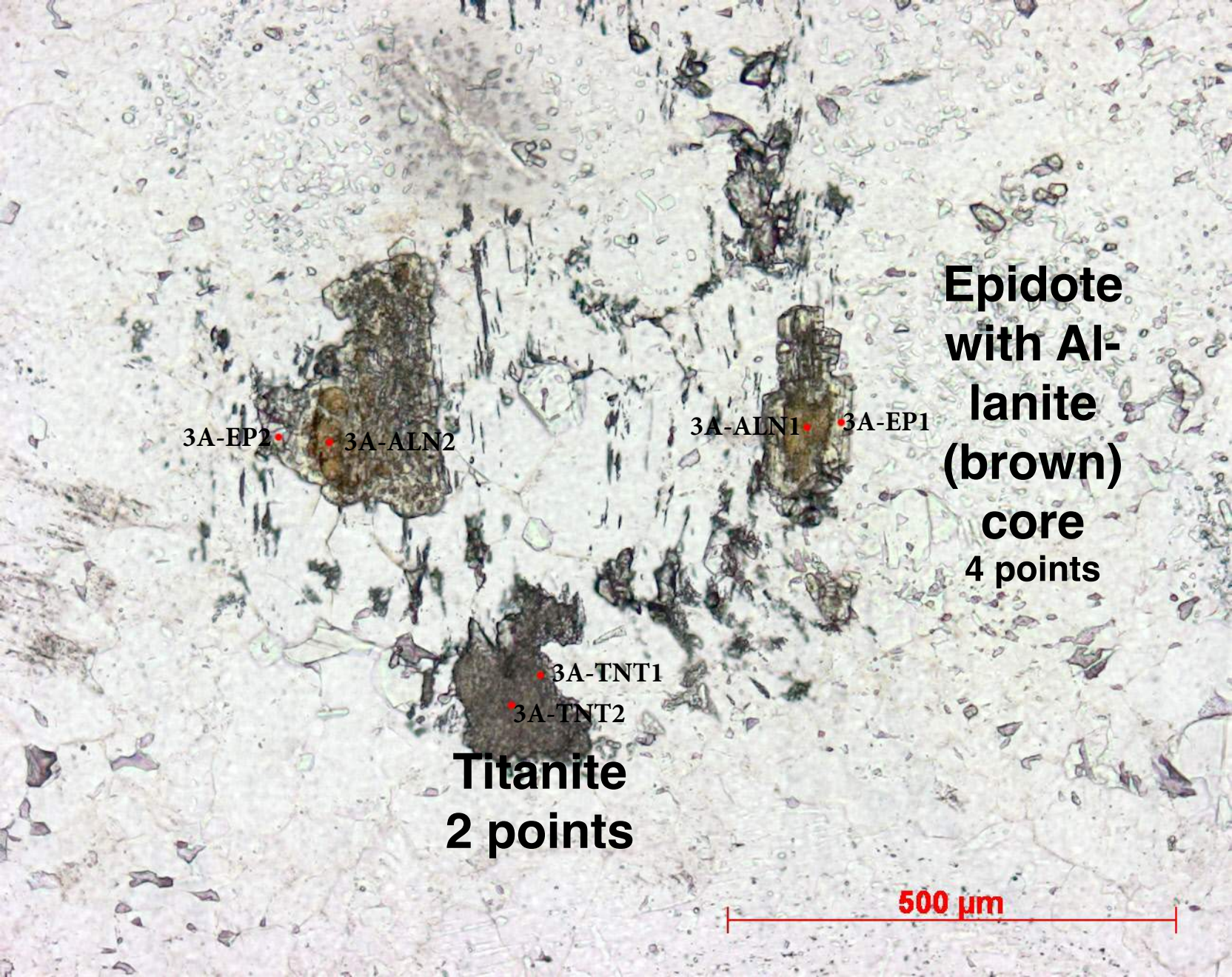


P01 circle 3



**Epidote with Allanite
core and Titanite**

1000 μm



**Epidote
with Al-
lanite
(brown)
core
4 points**

3A-EP2

3A-ALN2

3A-ALN1

3A-EP1

3A-TNT1

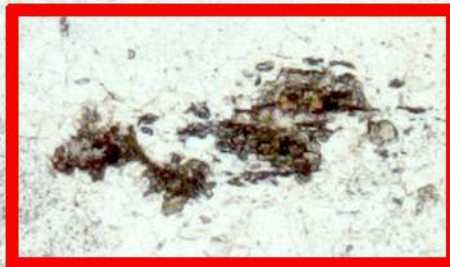
3A-TNT2

**Titanite
2 points**

500 μm

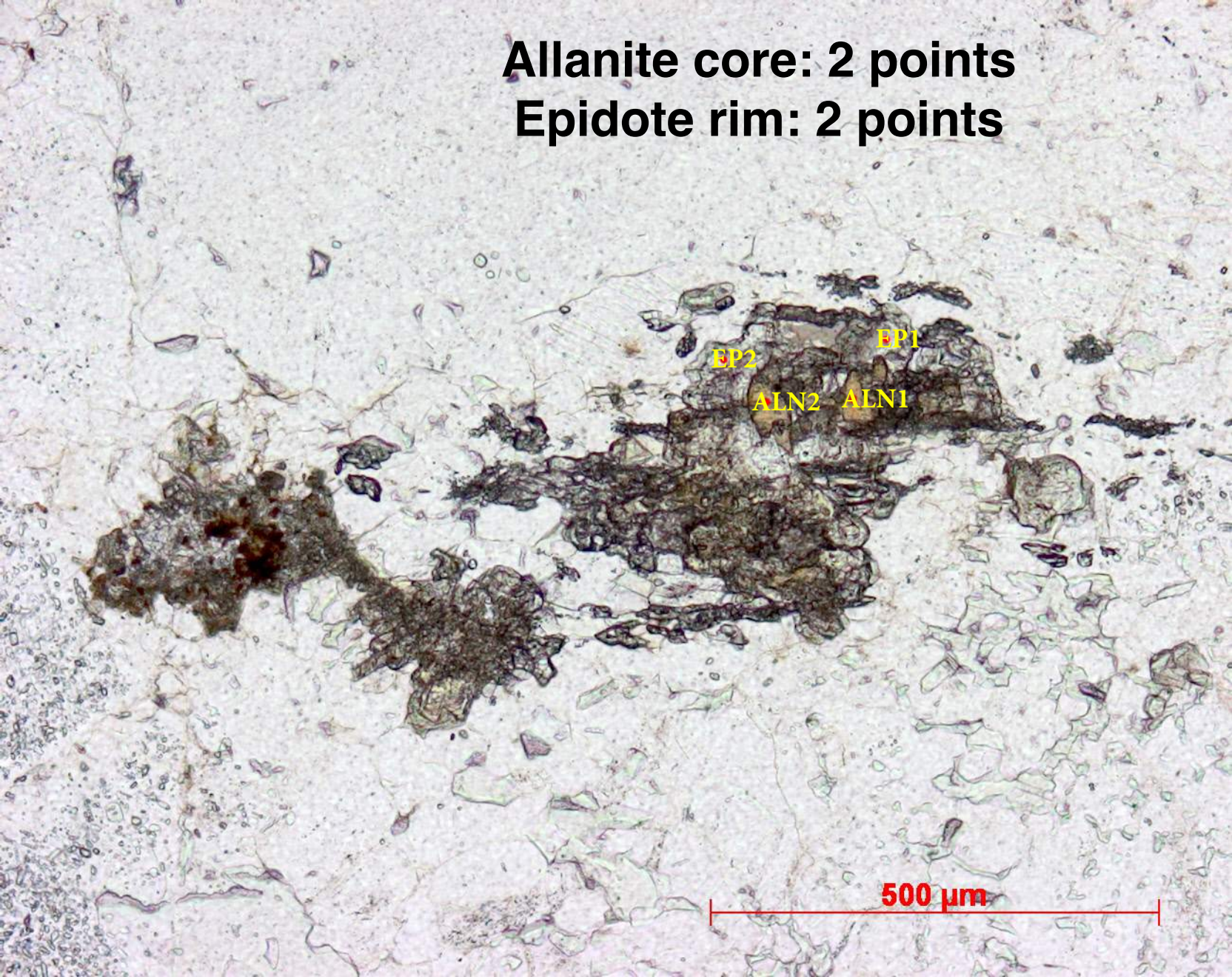
P01 circle 4

**Epidote with
Allanite core**



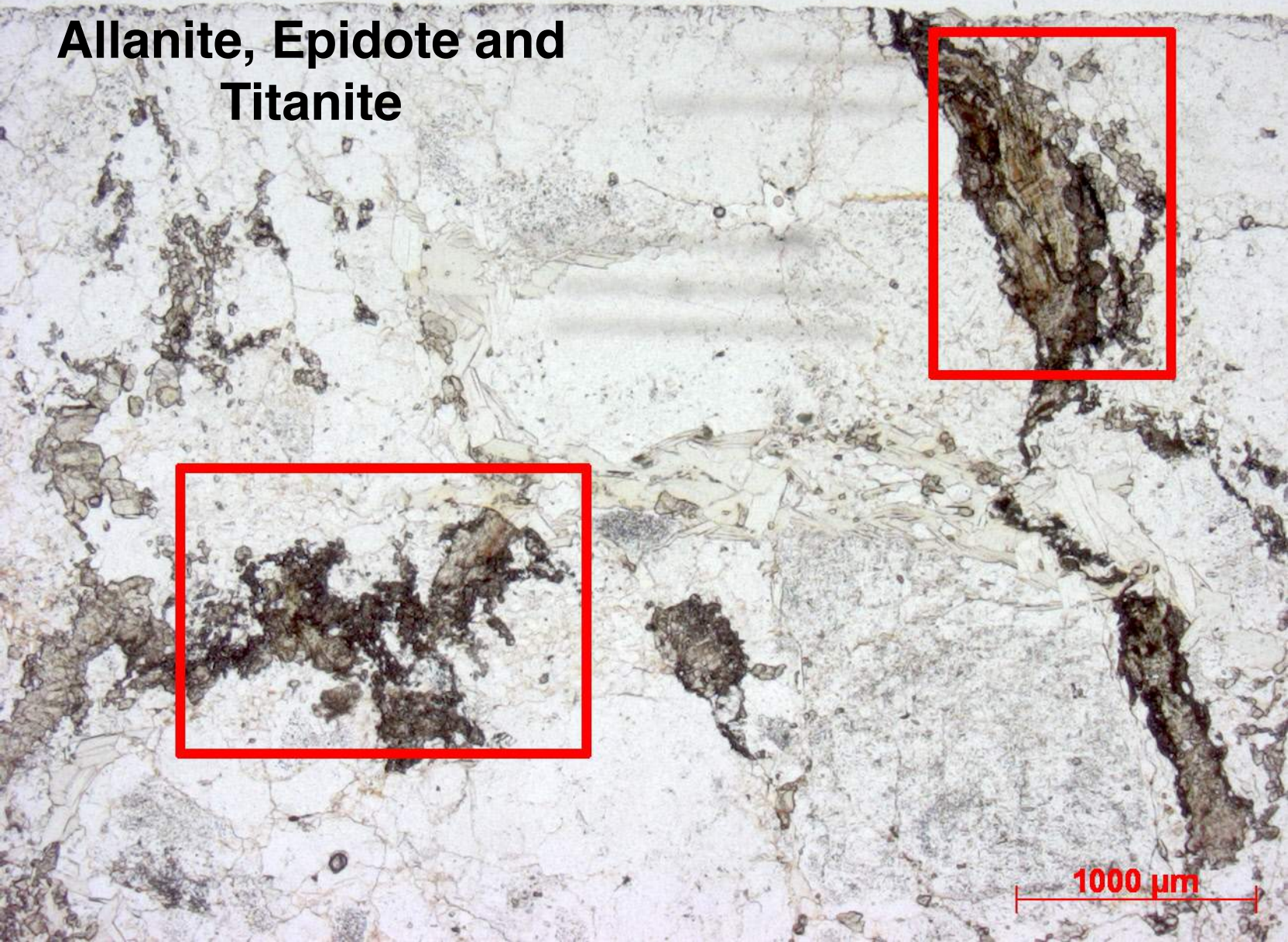
1000 μm

Allanite core: 2 points
Epidote rim: 2 points



500 μm

P27 circle 1
Allanite, Epidote and
Titanite



Epidote: 2 points
Allanite: 3 points

ep1

ep2

al3

al2

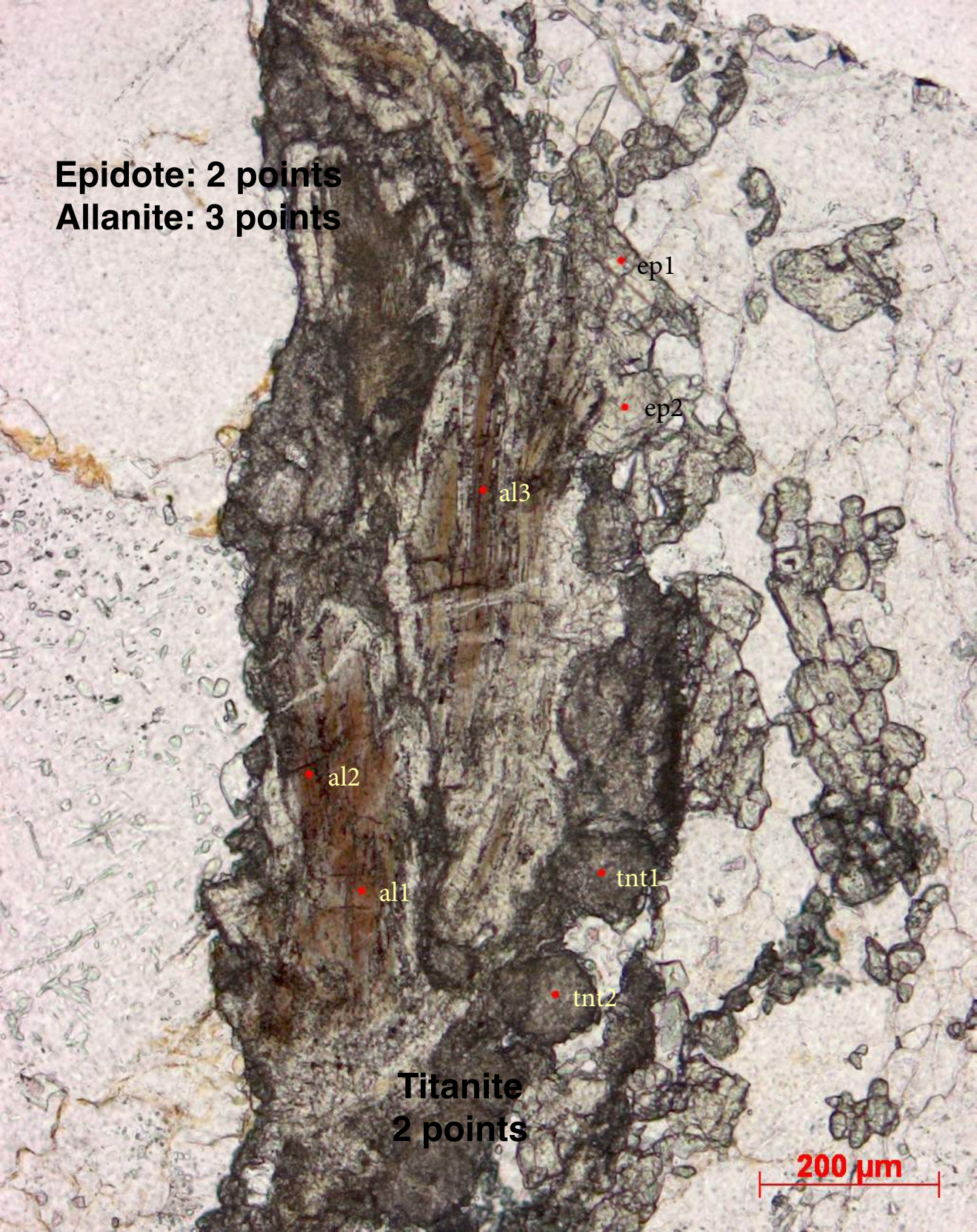
al1

tnt1

tnt2

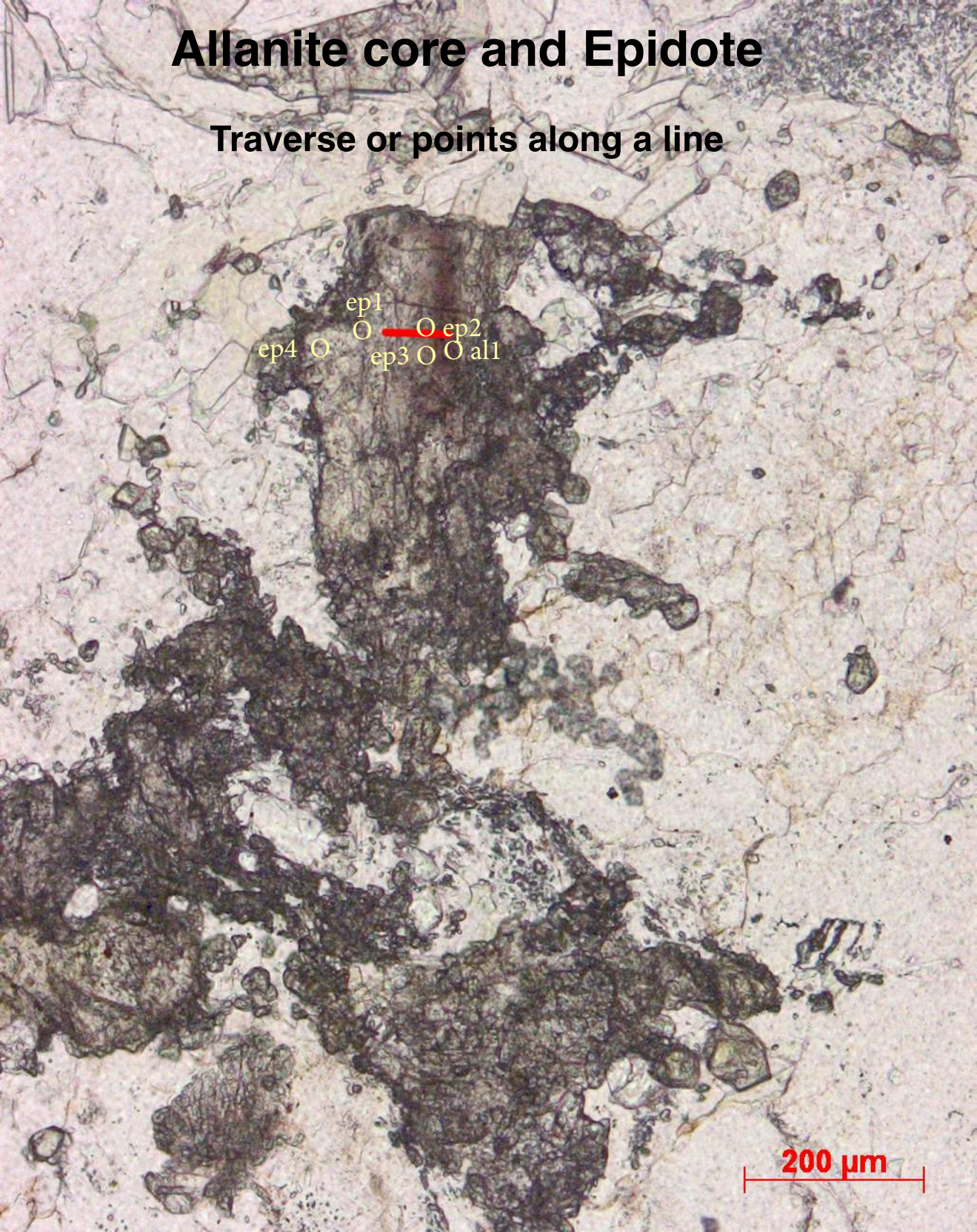
Titanite
2 points

200 μ m



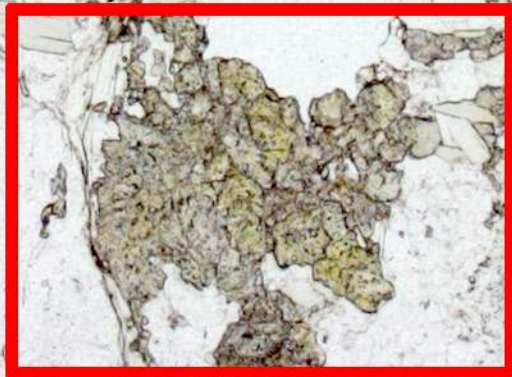
Allanite core and Epidote

Traverse or points along a line



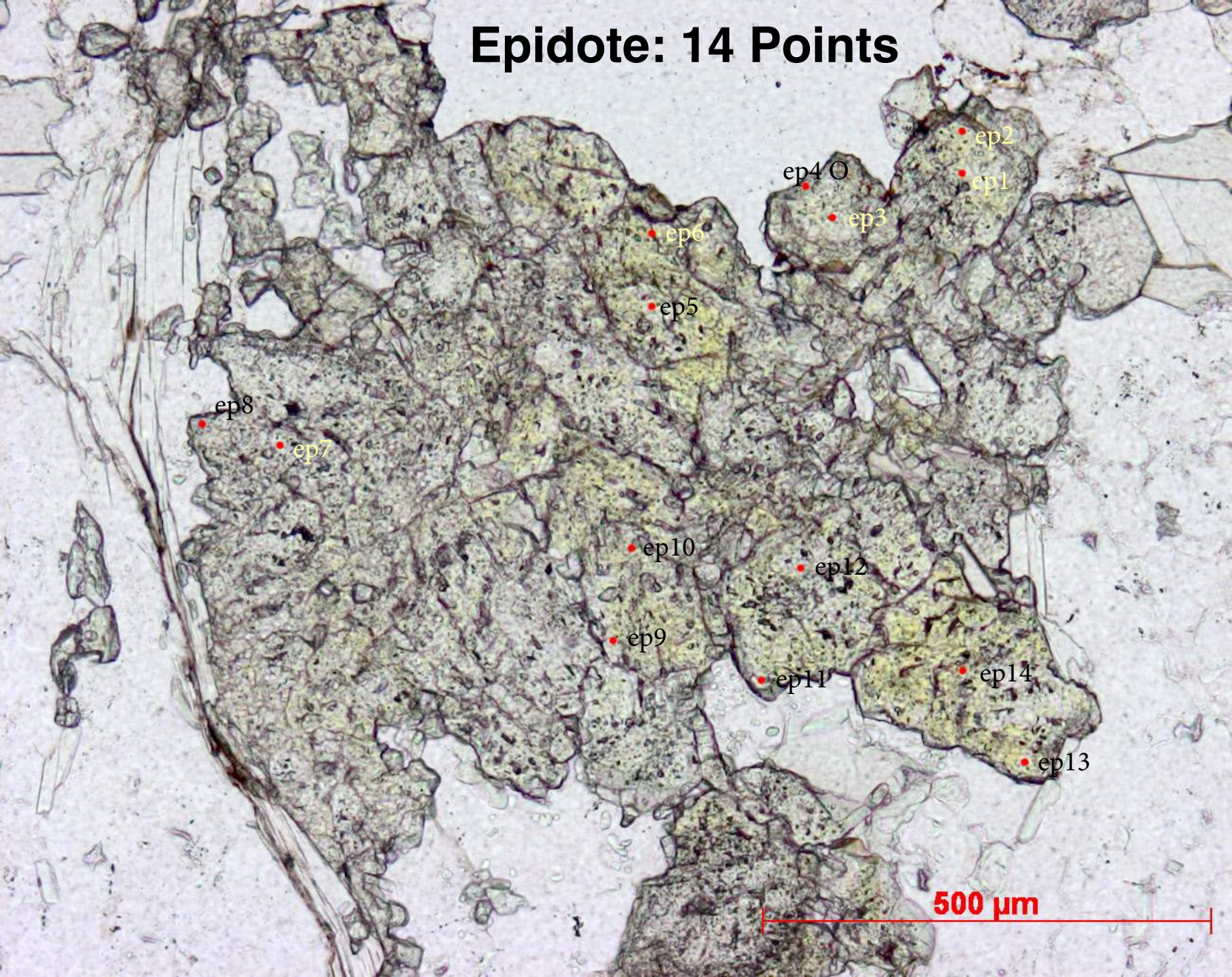
200 μm

P27 circle 2
Epidote

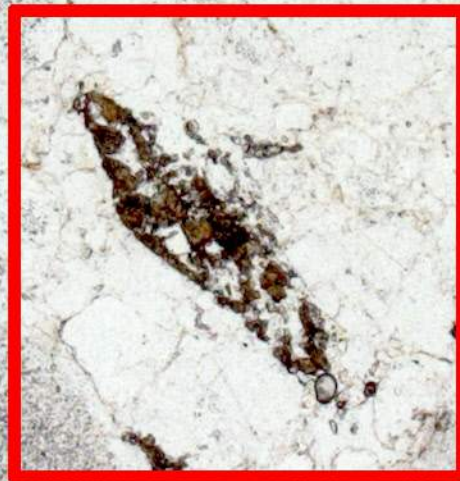


1000 μm

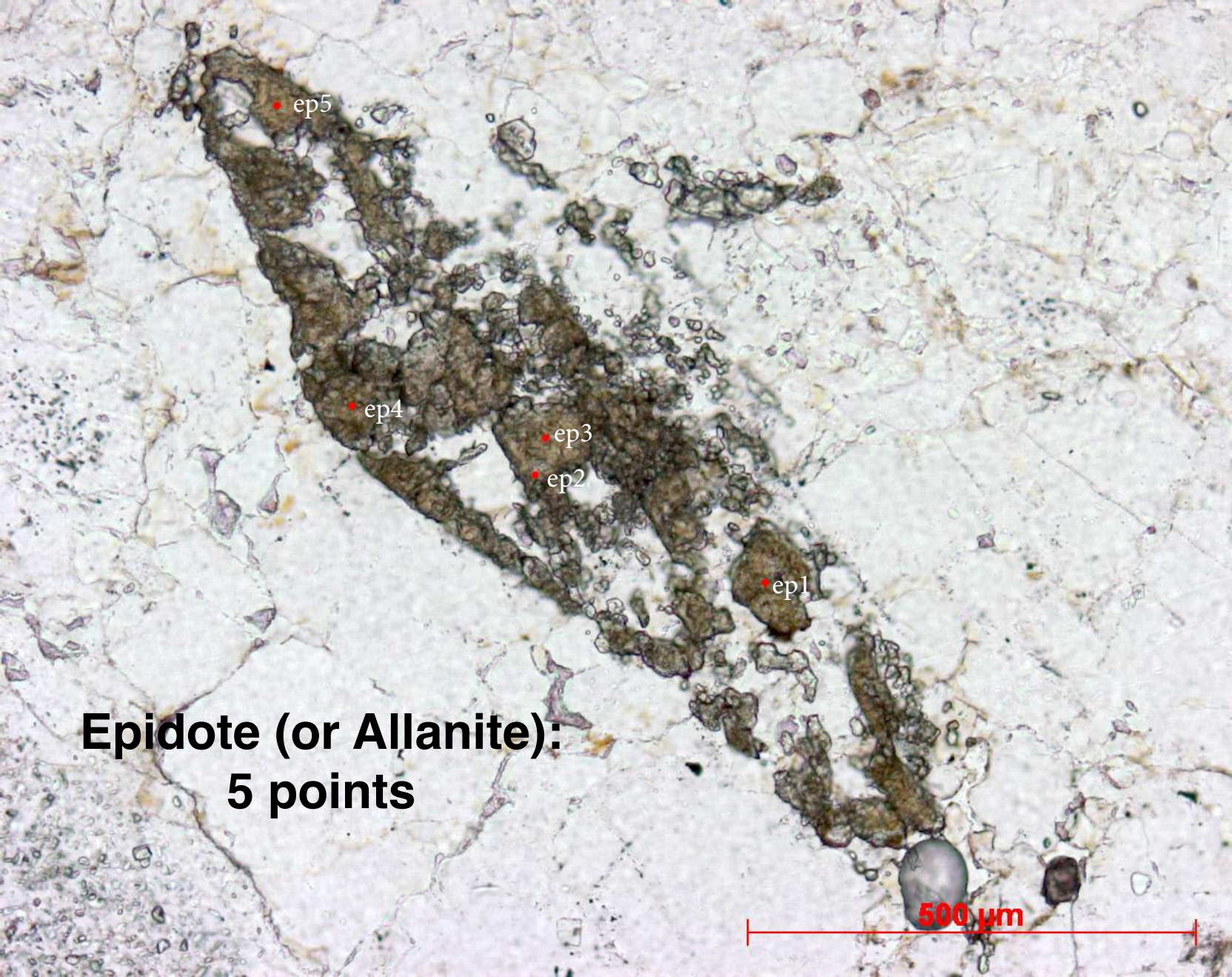
Epidote: 14 Points



P27 circle 3
Epidote



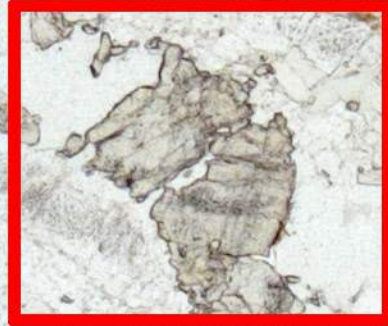
1000 μm



**Epidote (or Allanite):
5 points**

500 μm

P27 circle 4
Epidote



1000 μm

Epidote: 5 points

• ep1

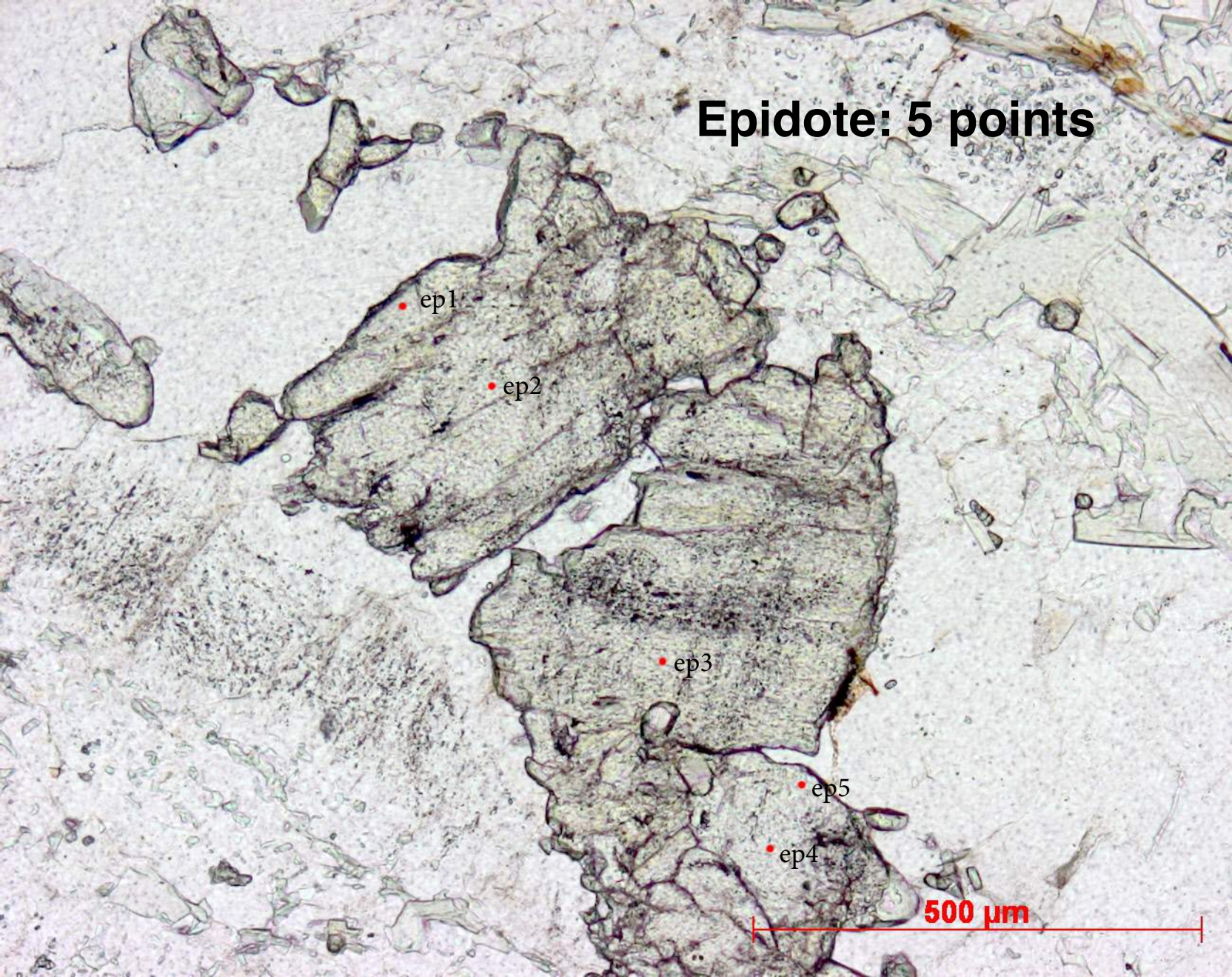
• ep2

• ep3

• ep5

• ep4

500 μ m



P27 circle 5
Epidote and Titanite



1000 μm



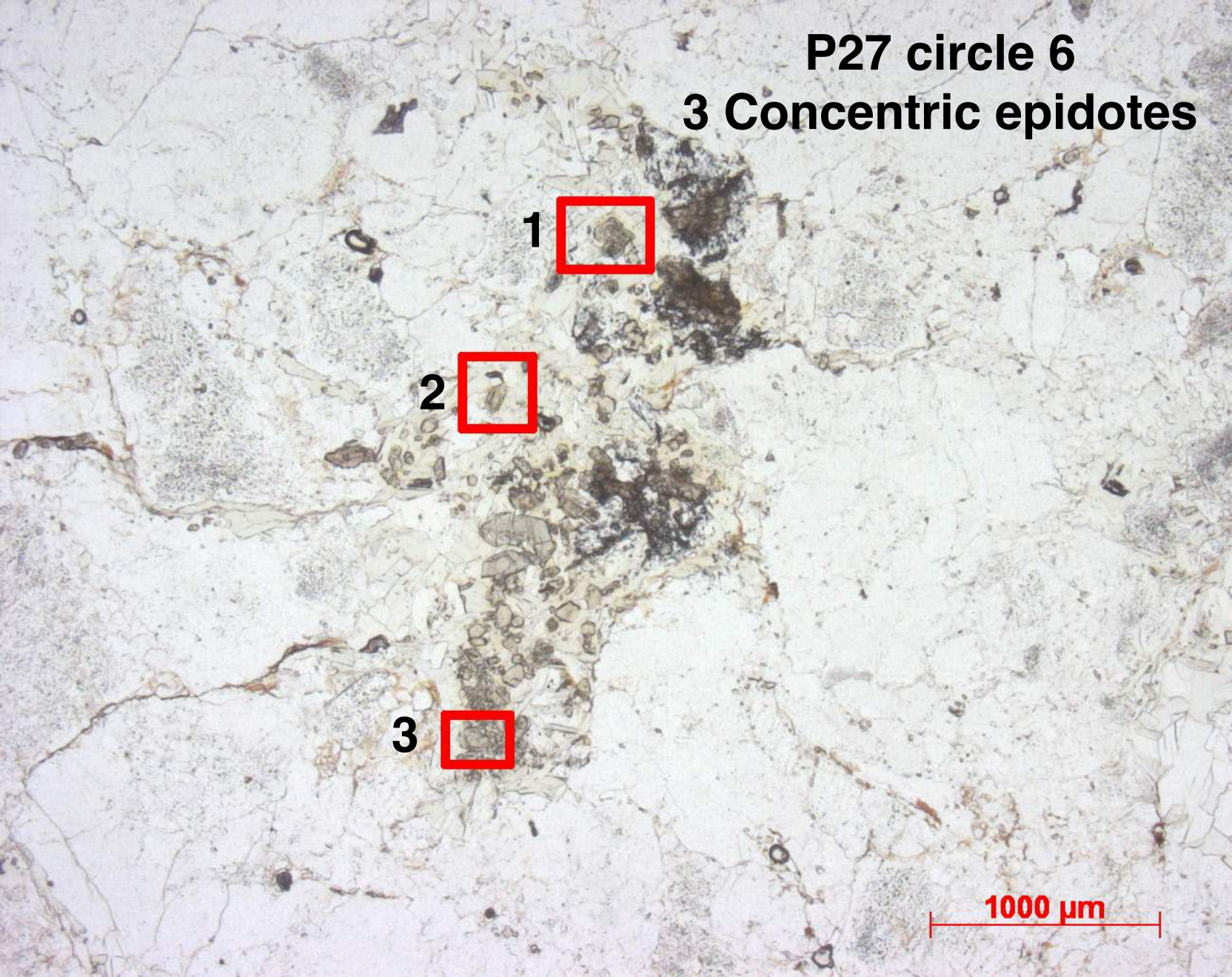
This is a photomicrograph of a rock sample showing two distinct mineral phases. The Epidote phase is represented by a large, dark, irregularly shaped mass in the center-left. The Titanite phase is represented by a large, dark, elongated mass in the center-right. The background is a light-colored, crystalline matrix. Seven sampling points are marked with red dots and labeled: ep1, ep2, ep3, ep4 are located within the Epidote mass, and tnt1, tnt2, tnt3 are located within the Titanite mass. A scale bar at the bottom right indicates a length of 500 micrometers.

**Epidote:
4 points**

**Titanite:
3 points**

500 μm

P27 circle 6
3 Concentric epidotes



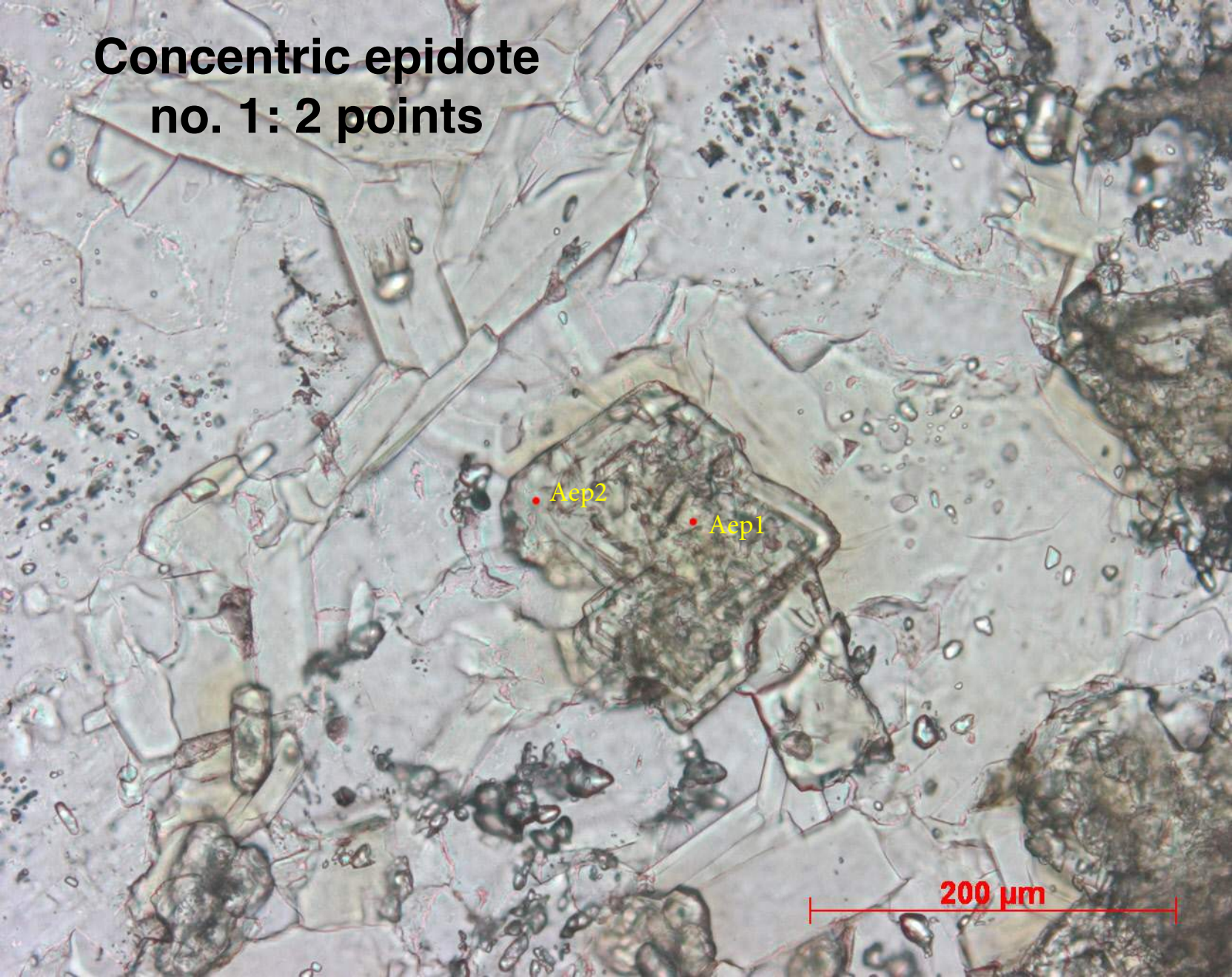
1

2

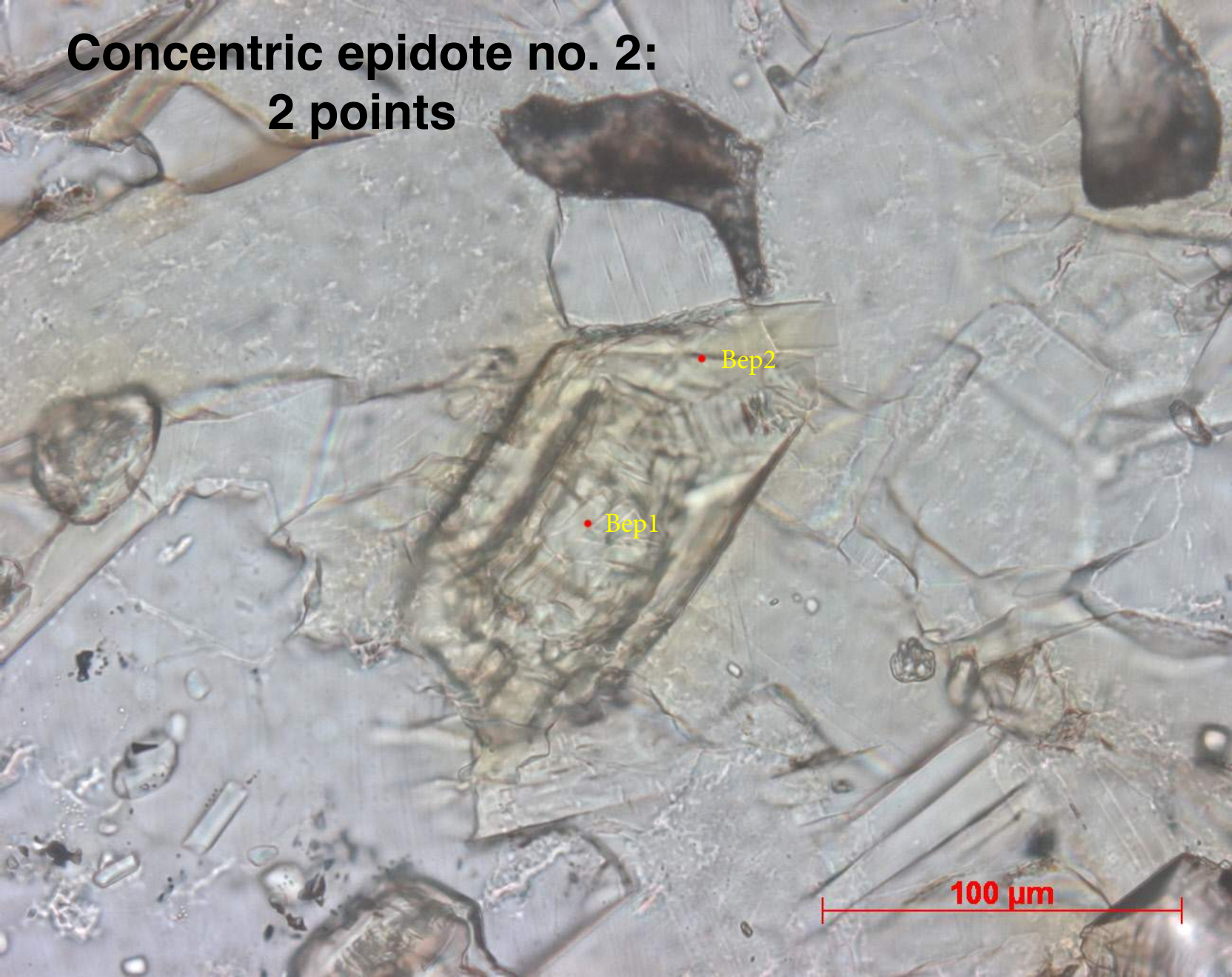
3

1000 μm

Concentric epidote no. 1: 2 points



Concentric epidote no. 2: 2 points

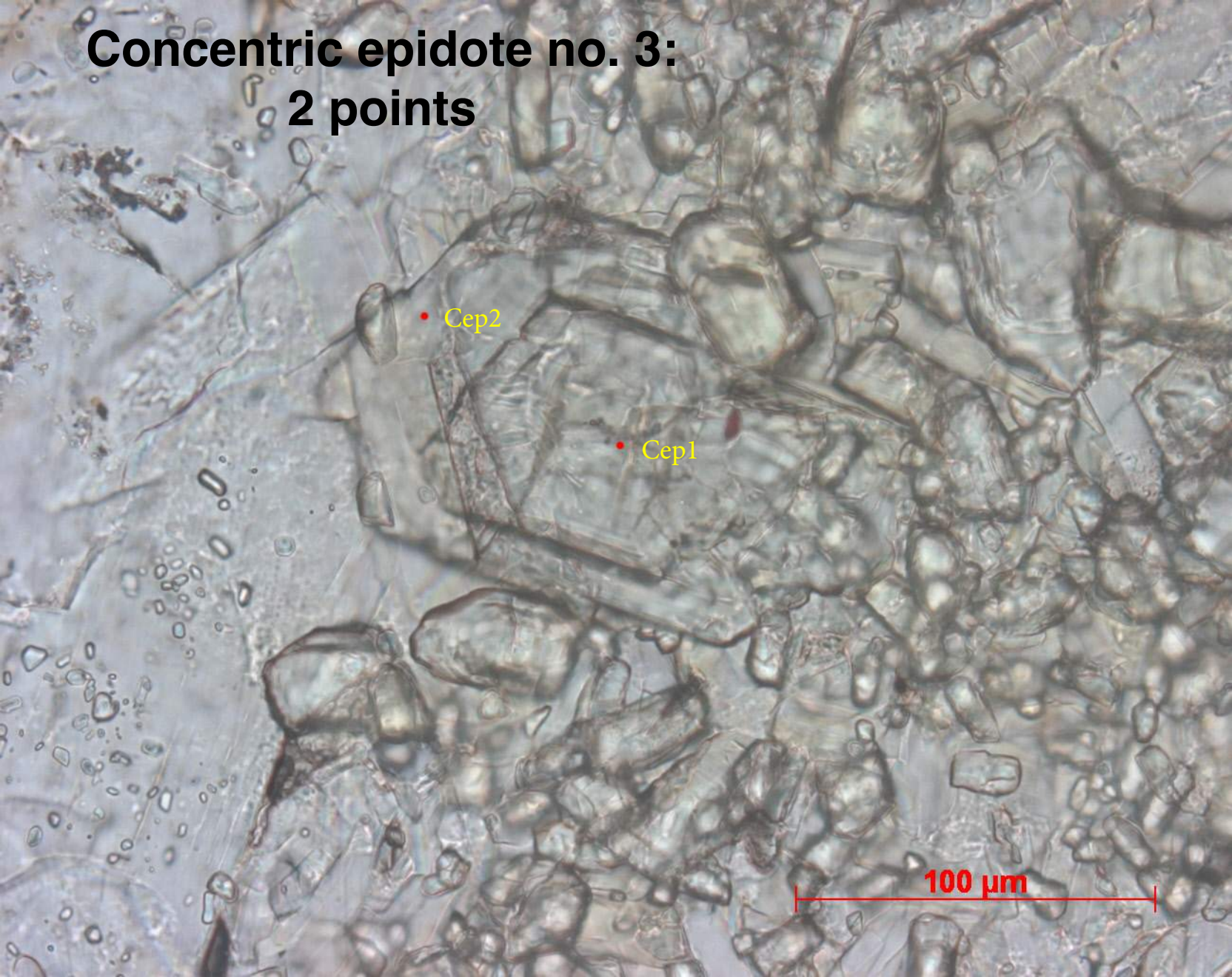


• Bep2

• Bep1

100 μm

Concentric epidote no. 3: 2 points

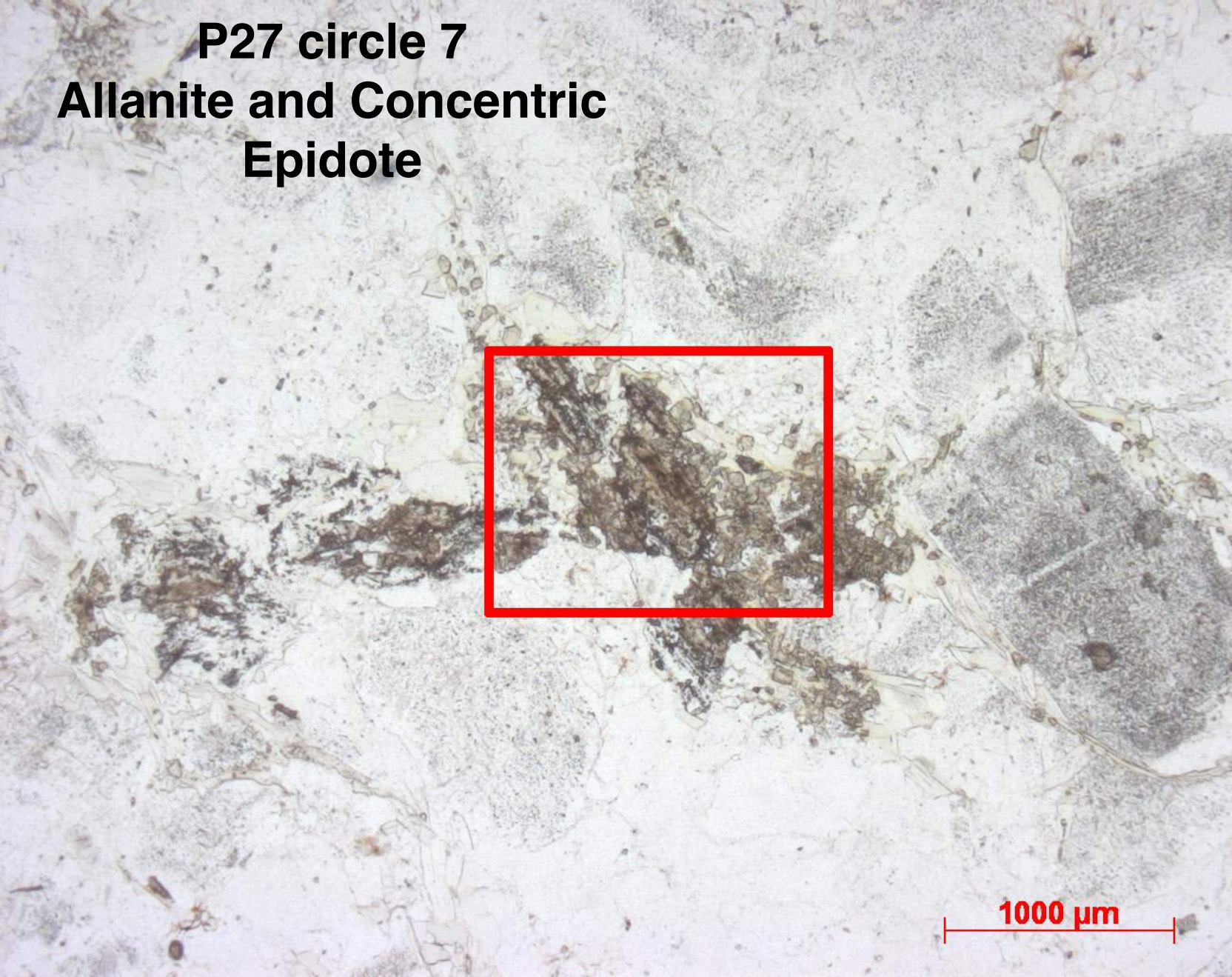


• Cep2

• Cep1

100 μm

P27 circle 7
Allanite and Concentric
Epidote



1000 μm

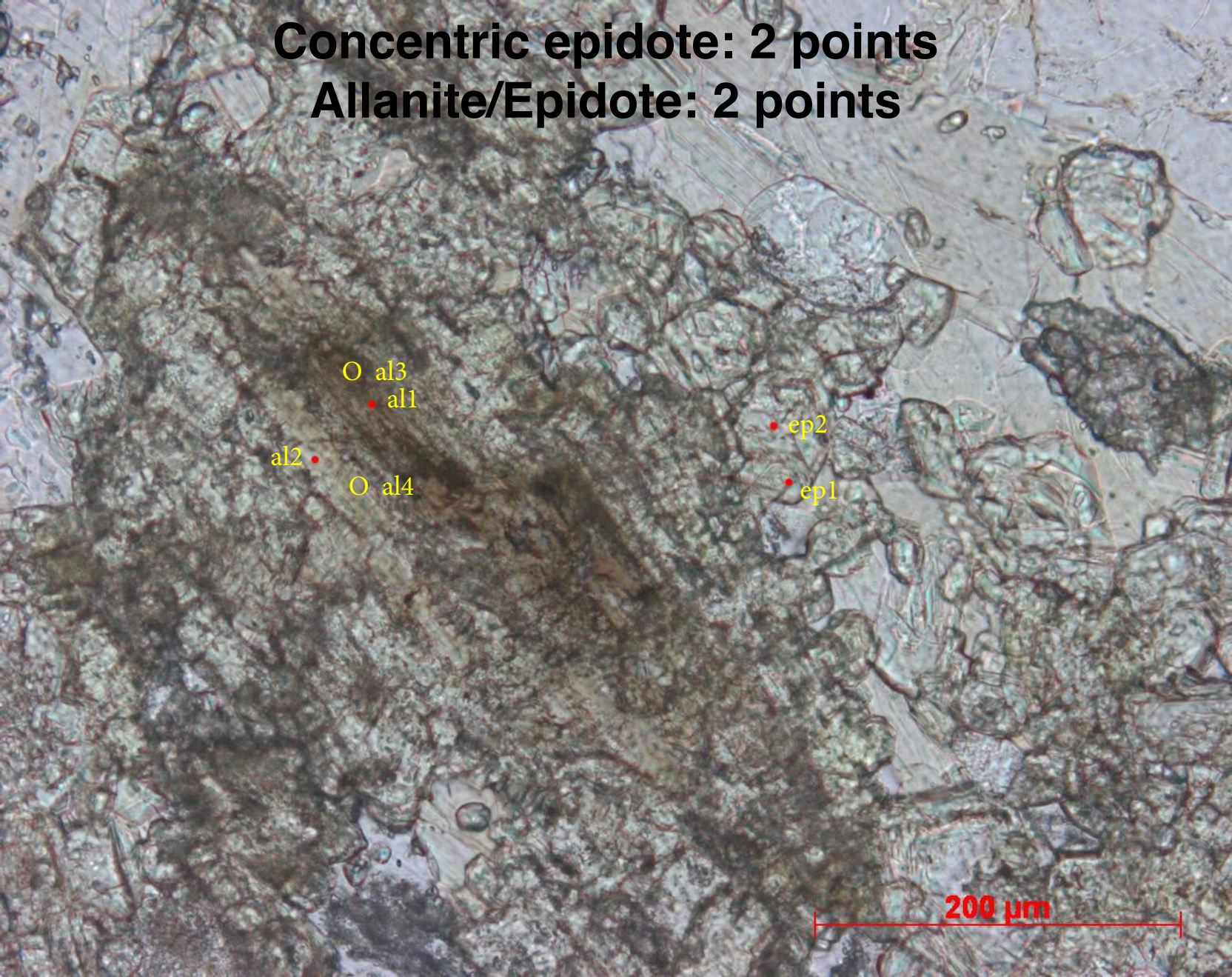
Concentric epidote: 2 points
Allanite/Epidote: 2 points

○ al3
● al1
al2 ●
○ al4

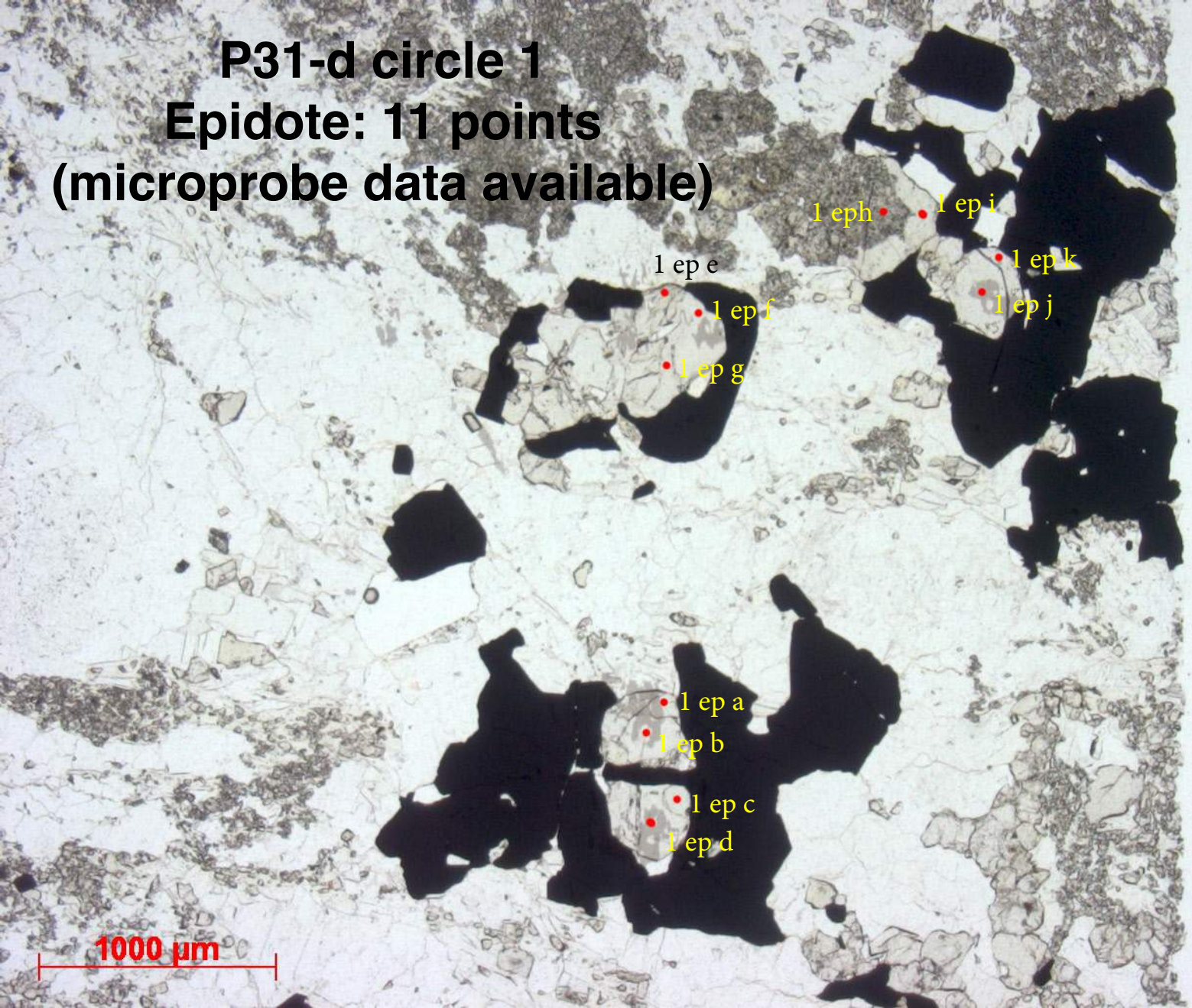
● ep2

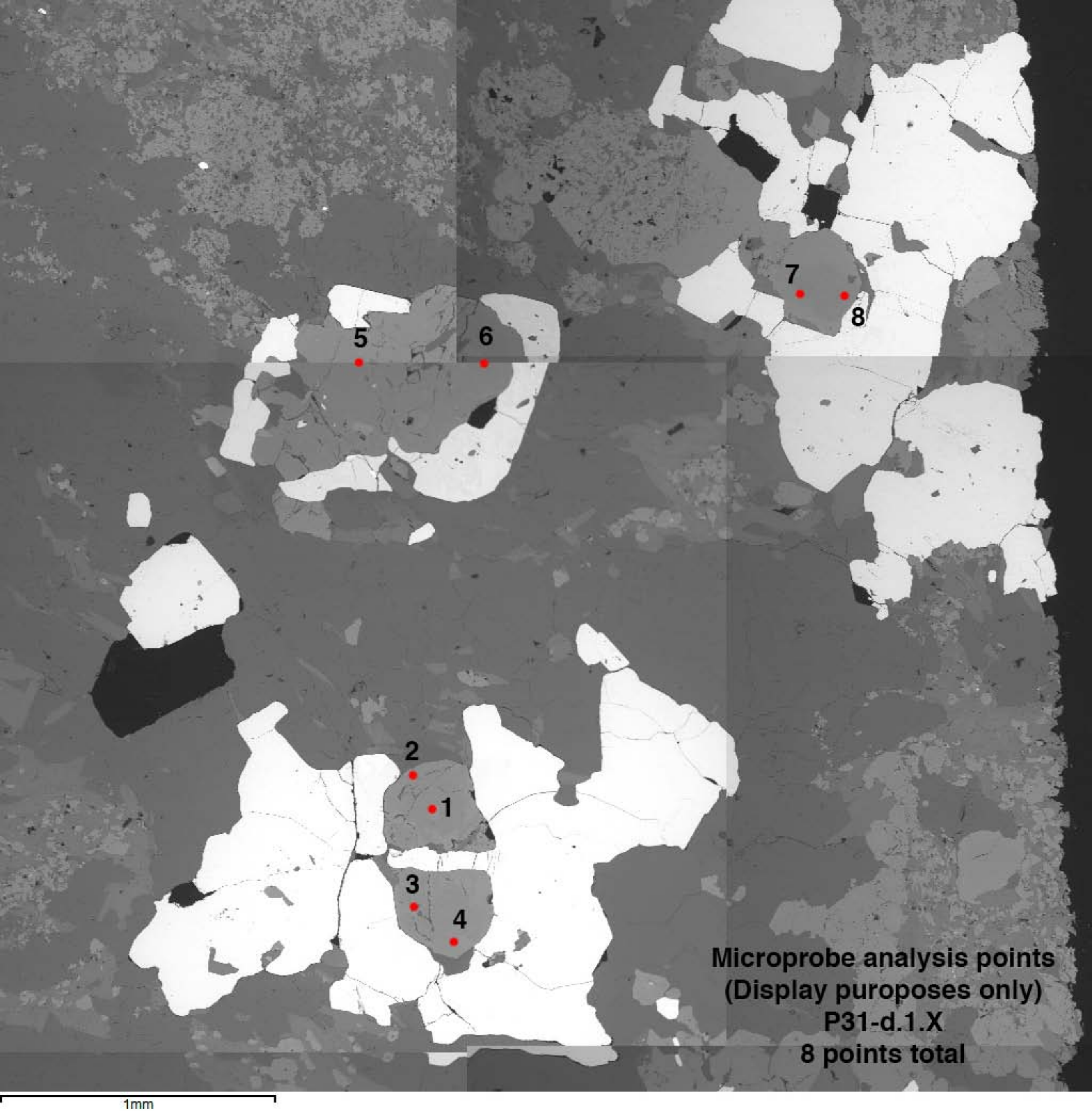
● ep1

200 μm



P31-d circle 1
Epidote: 11 points
(microprobe data available)





5

6

7

8

2

1

3

4

Microprobe analysis points
(Display purposes only)
P31-d.1.X
8 points total

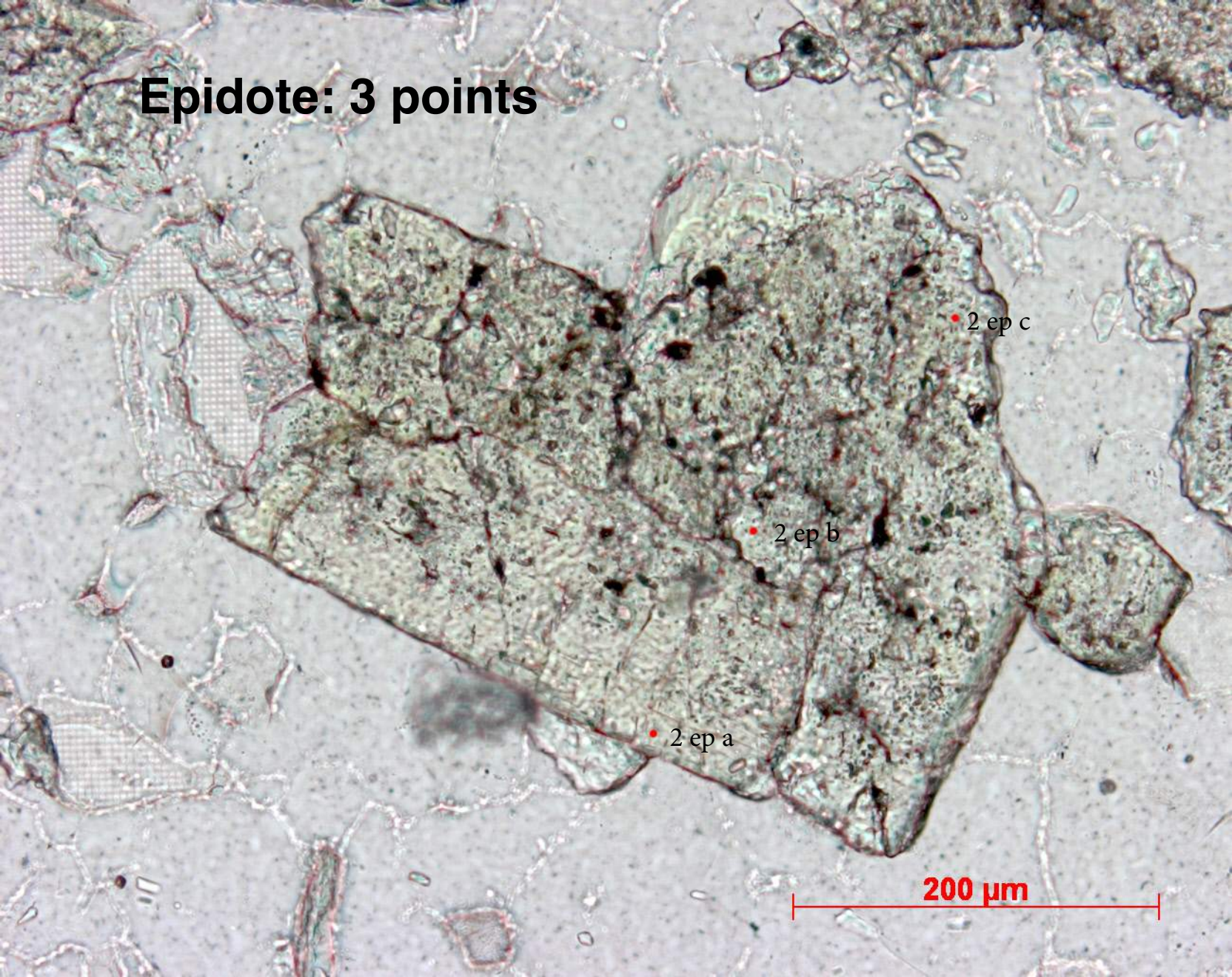
1mm

P31-d circle 2
Epidote



1000 μ m

Epidote: 3 points



• 2 ep c

• 2 ep b

• 2 ep a

200 μm

P31-d circle 3
Epidote

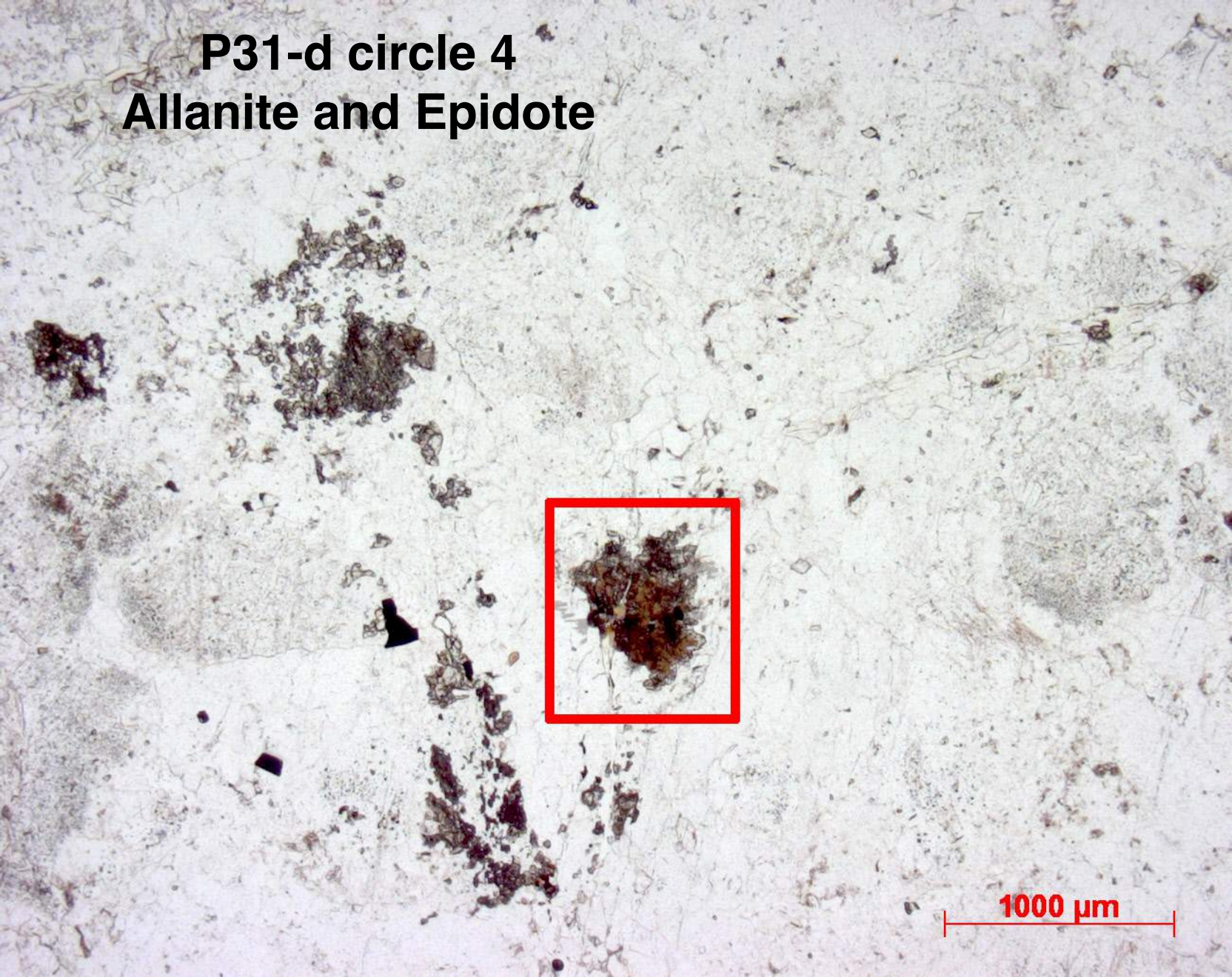


1000 μm

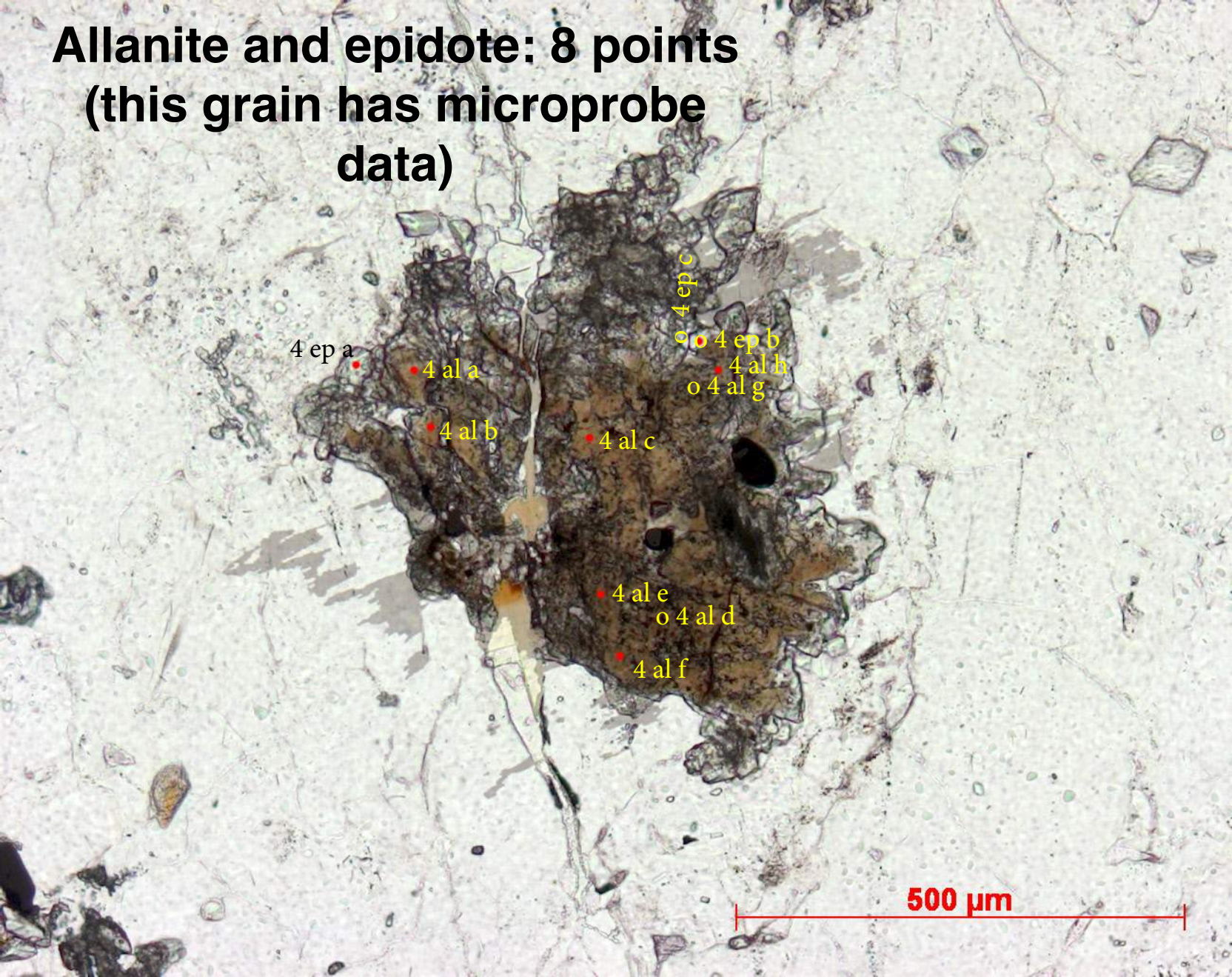
Epidote: 4 points

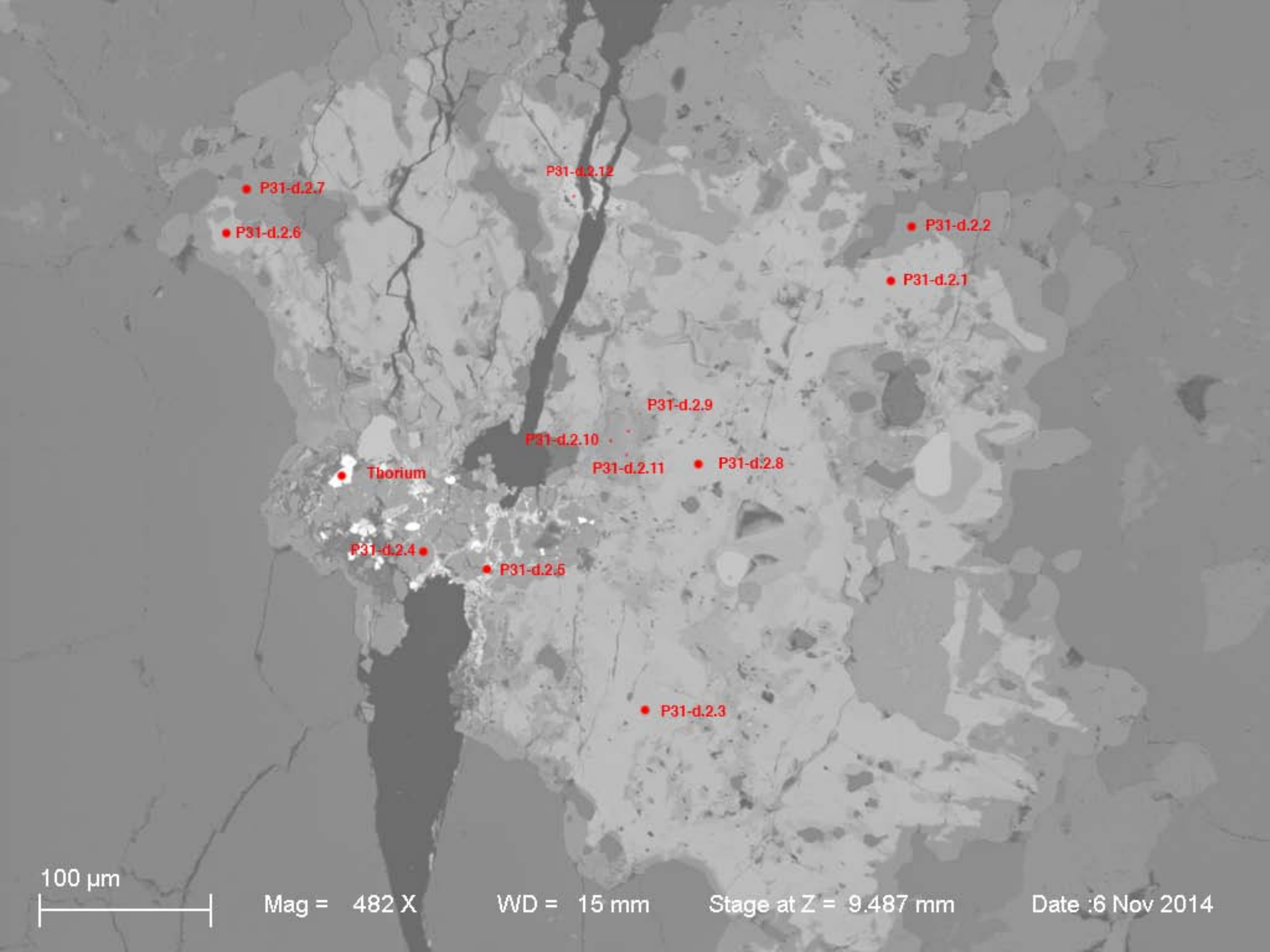


P31-d circle 4
Allanite and Epidote



**Allanite and epidote: 8 points
(this grain has microprobe
data)**





● P31-d.2.7

● P31-d.2.6

P31-d.2.12

● P31-d.2.2

● P31-d.2.1

P31-d.2.9

P31-d.2.10

P31-d.2.11

● P31-d.2.8

● Thorium

P31-d.2.4

● P31-d.2.5

● P31-d.2.3

100 μm

Mag = 482 X

WD = 15 mm

Stage at Z = 9.487 mm

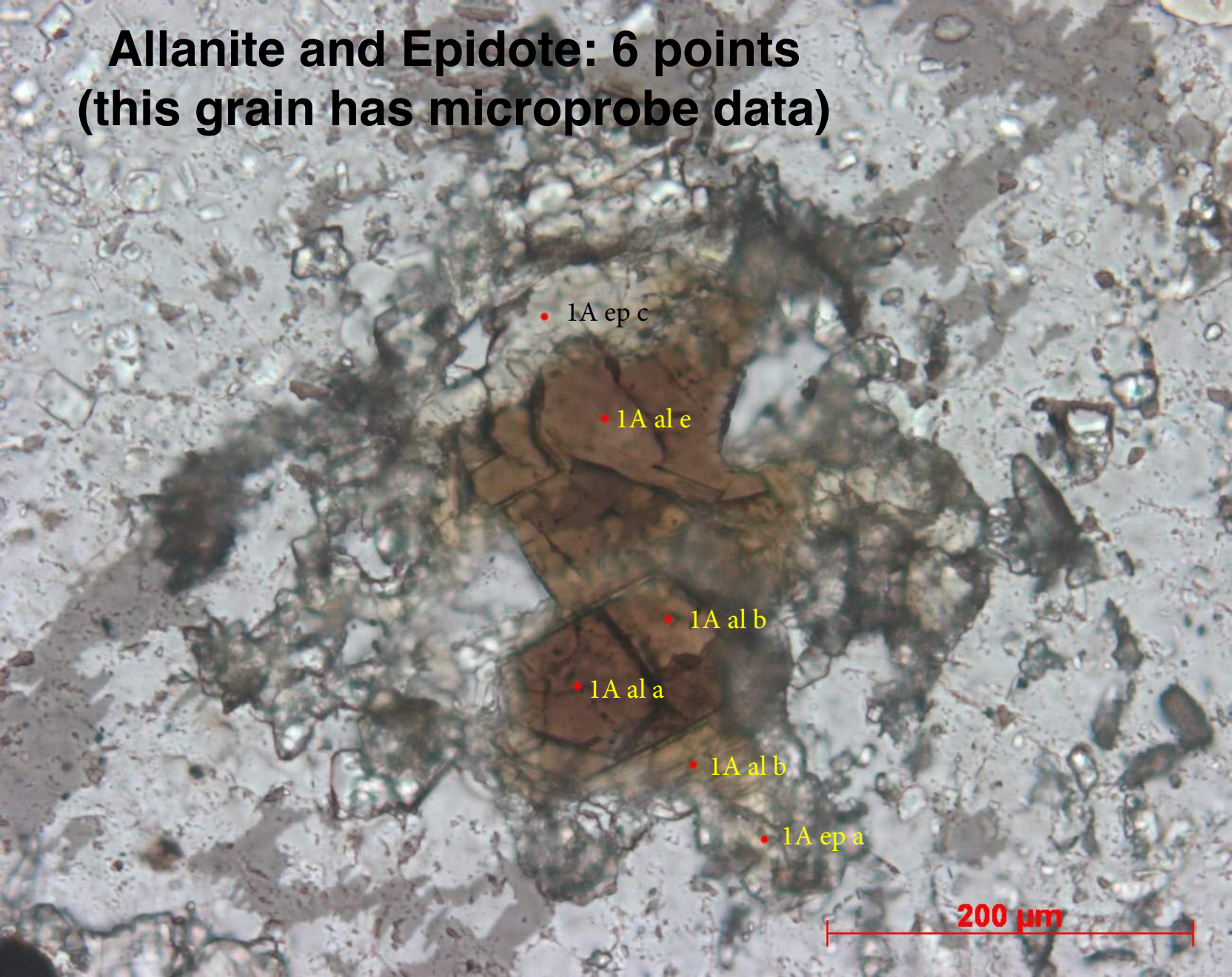
Date :6 Nov 2014

P31-u circle 1
Allanite and Epidote

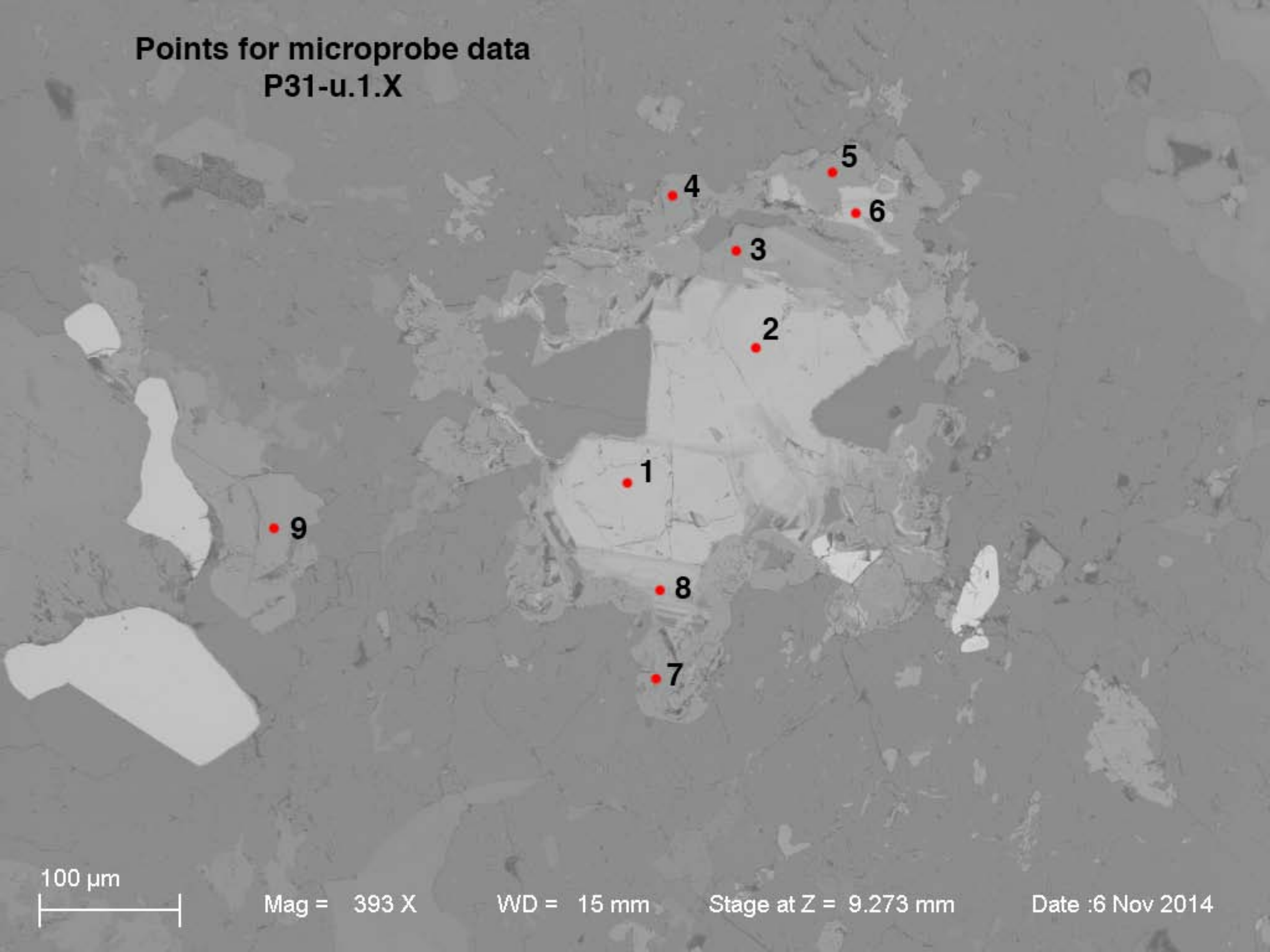


1000 μm

Allanite and Epidote: 6 points (this grain has microprobe data)



Points for microprobe data
P31-u.1.X



100 μm

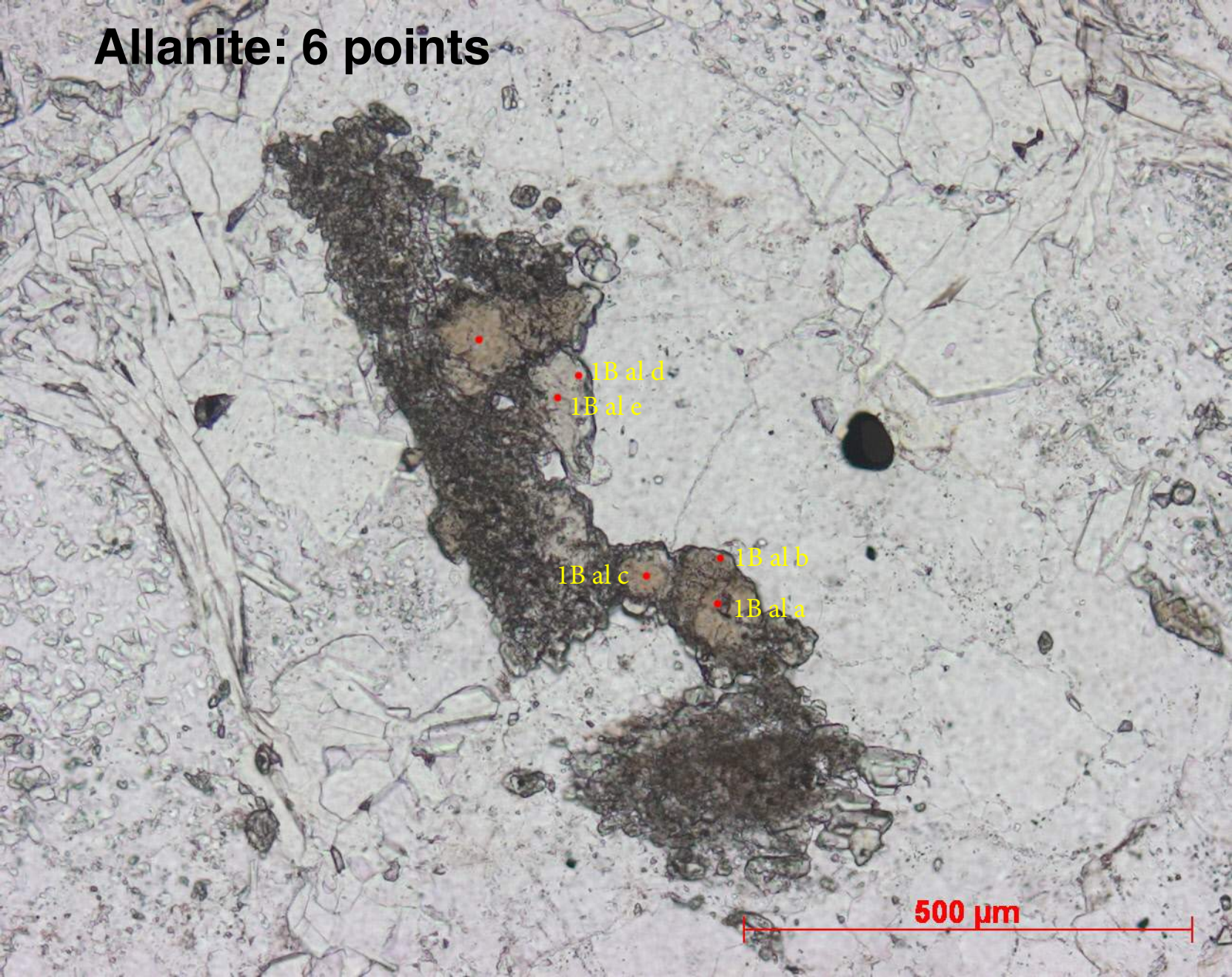
Mag = 393 X

WD = 15 mm

Stage at Z = 9.273 mm

Date :6 Nov 2014

Allanite: 6 points

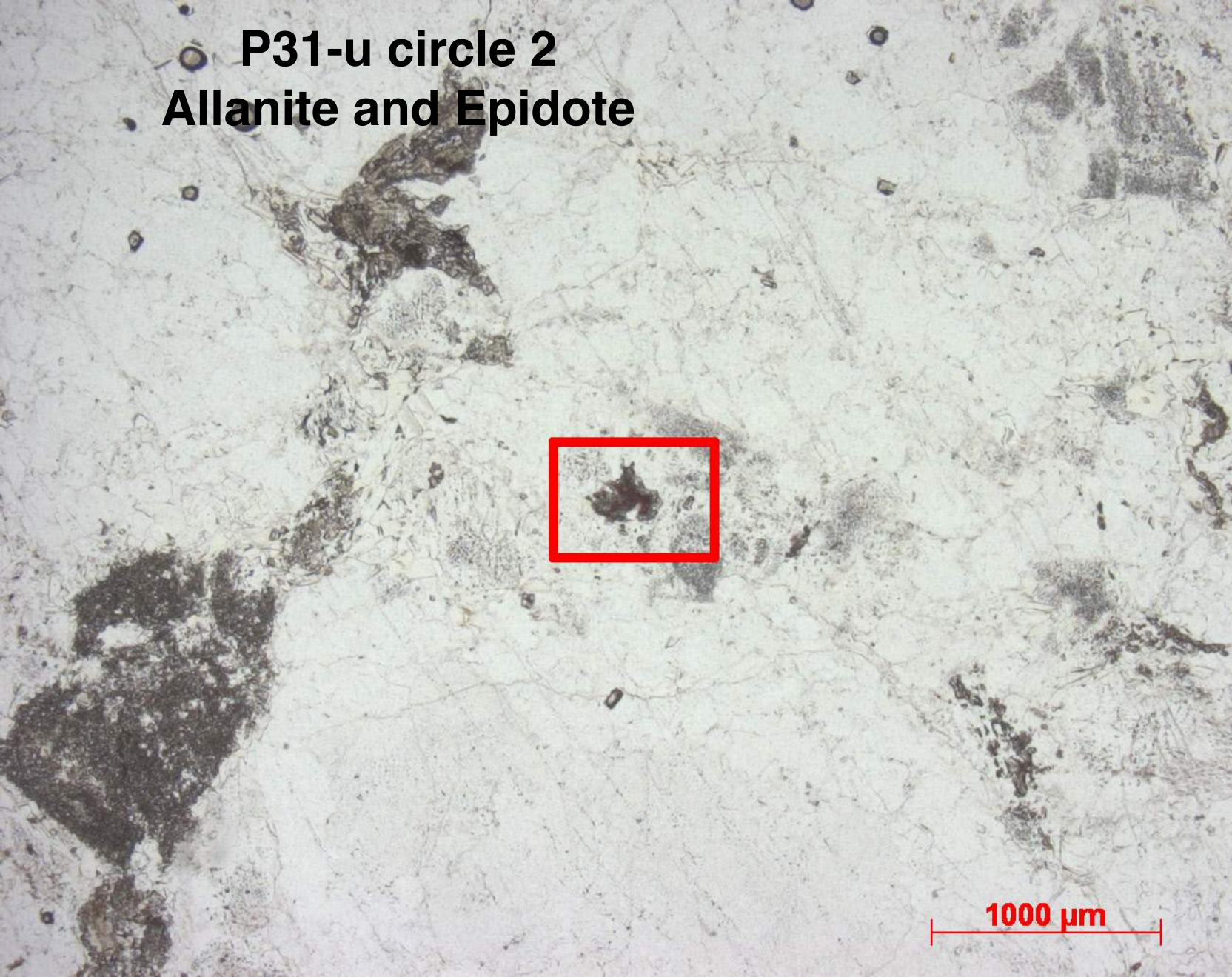


• 1B al d
• 1B al e

• 1B al b
• 1B al a
• 1B al c

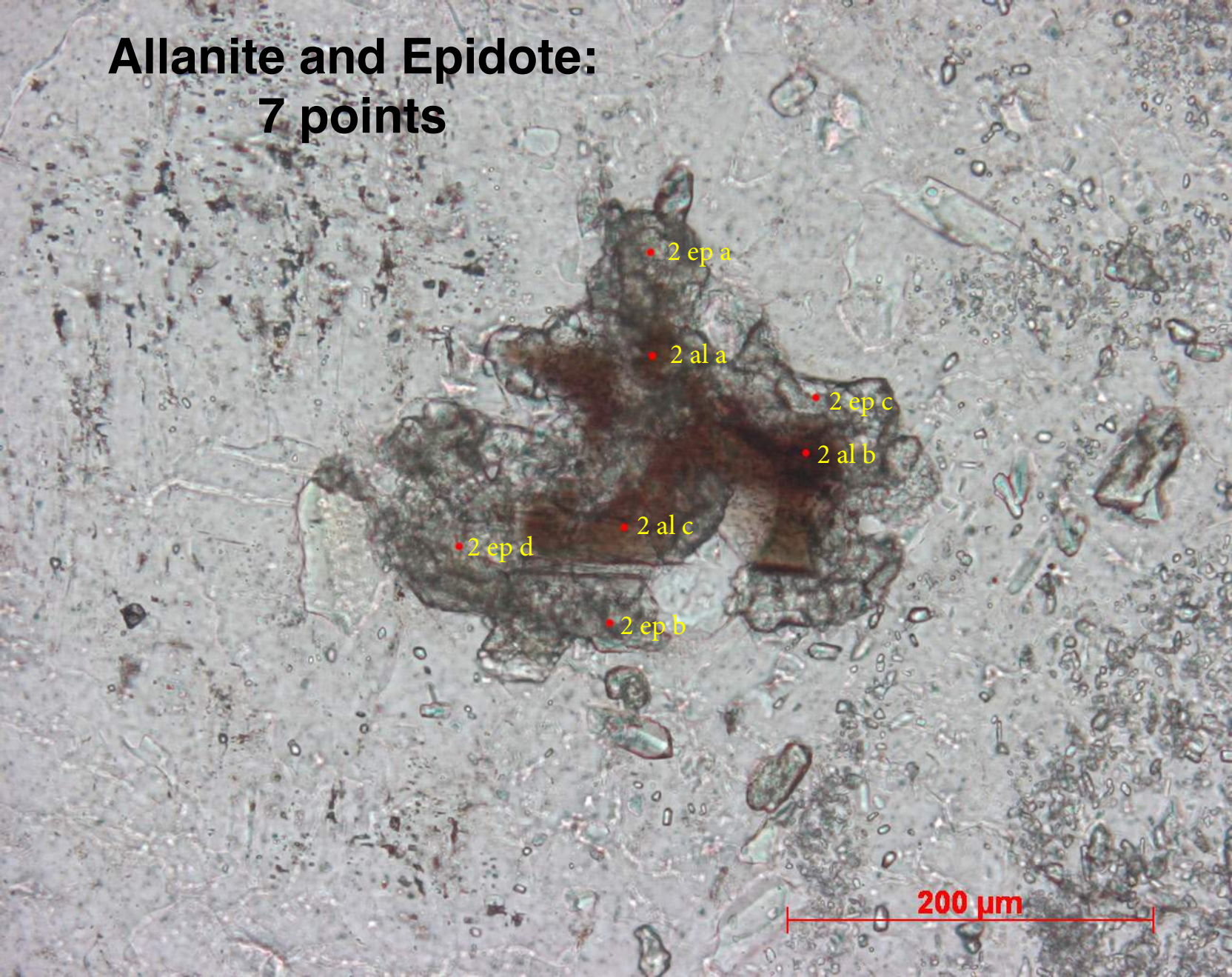
500 μm

P31-u circle 2
Allanite and Epidote



1000 μm

Allanite and Epidote: 7 points

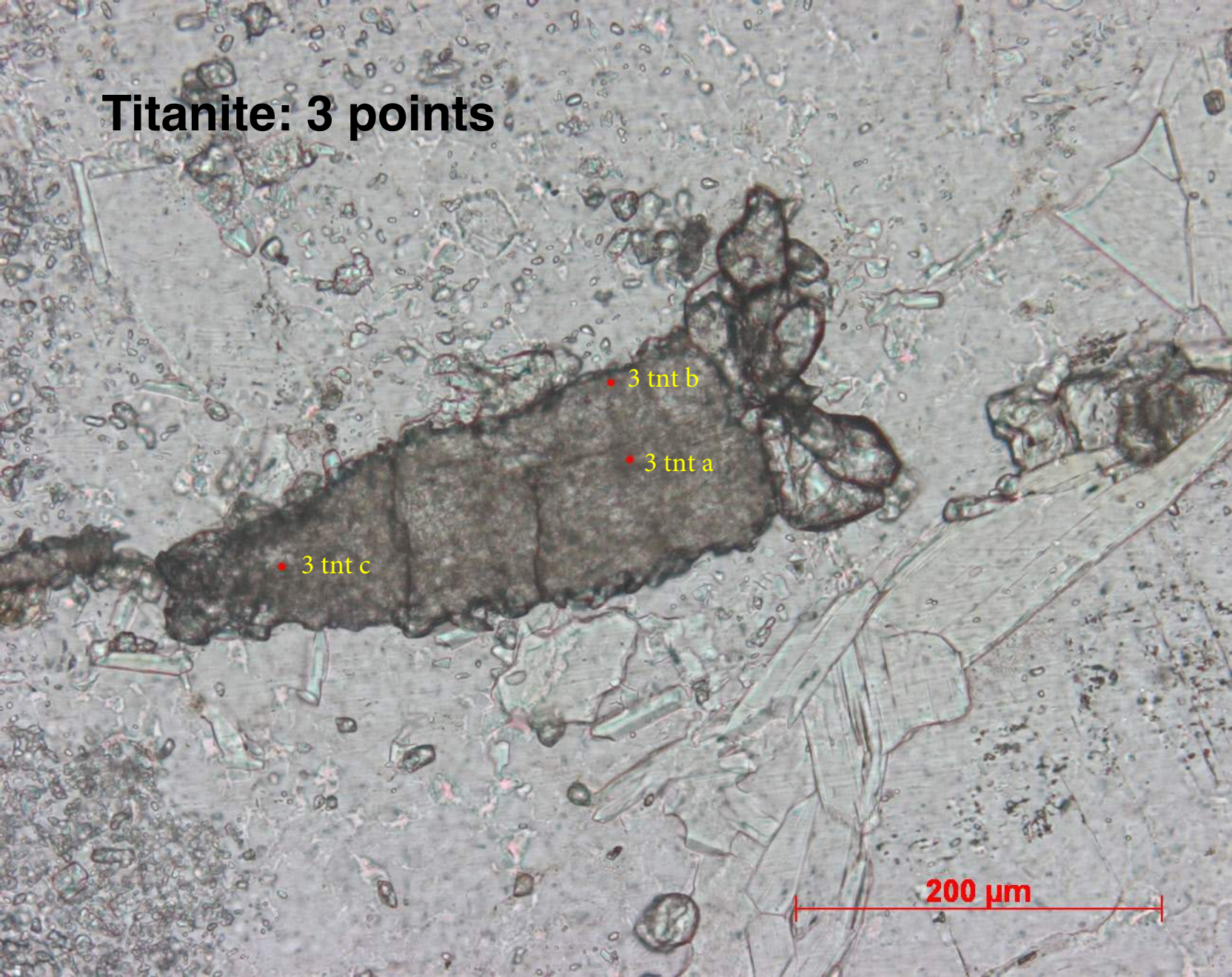


P31-u circle 3
Titanite

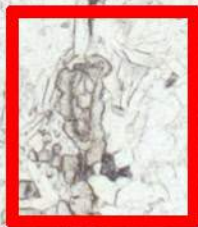


1000 μm

Titanite: 3 points

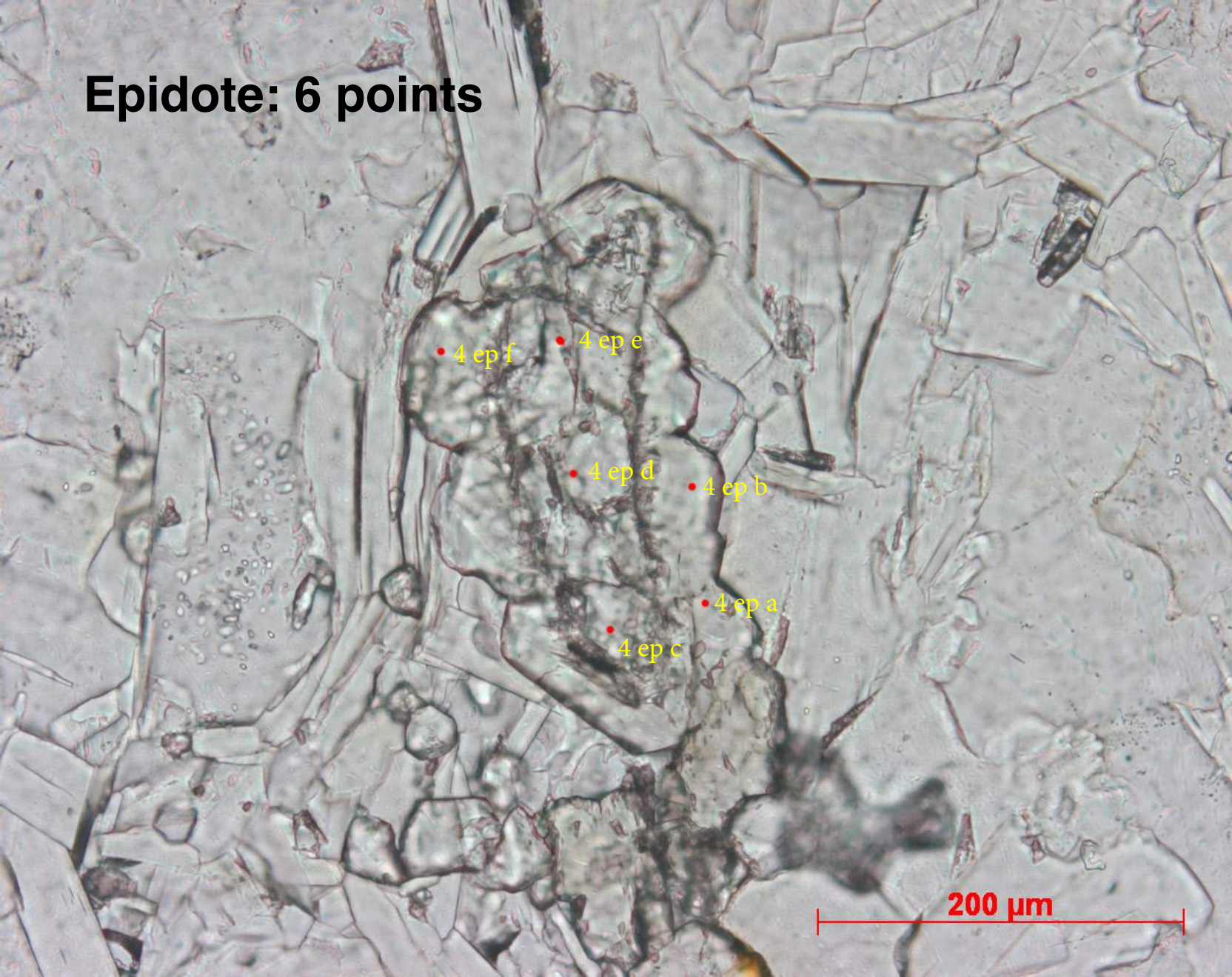


P31-u circle 4
Concentric epidote



1000 μm

Epidote: 6 points



200 μm