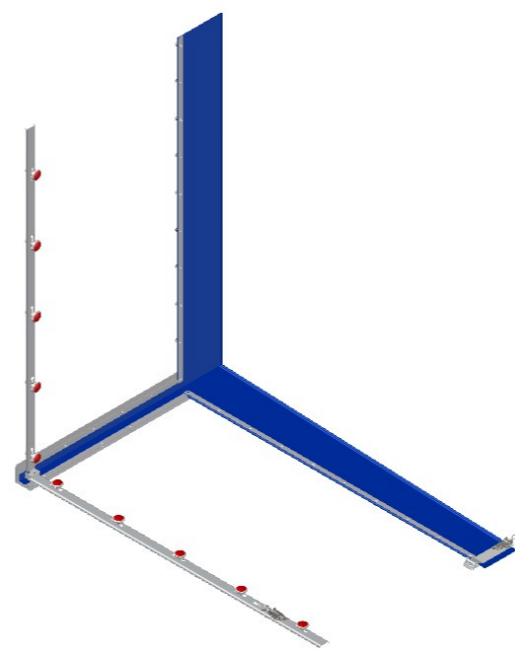
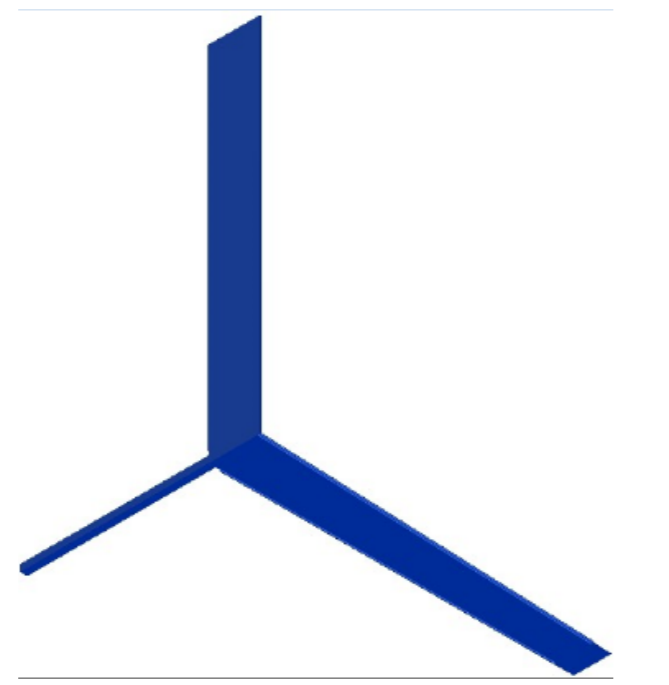


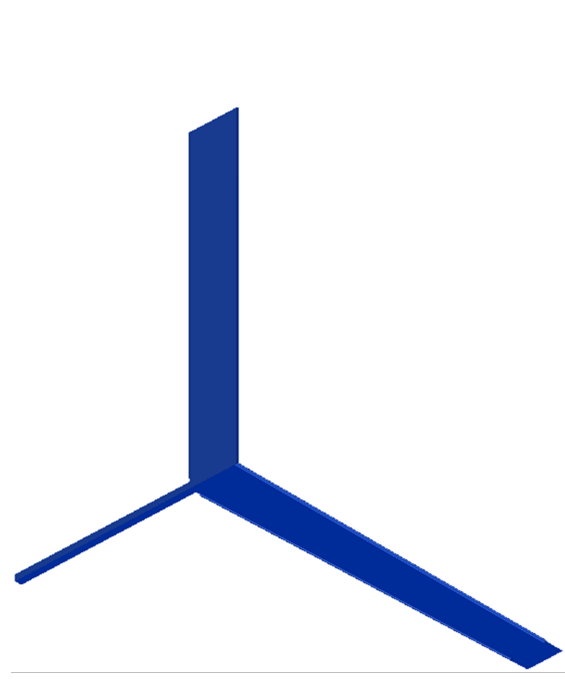
The panel connection system



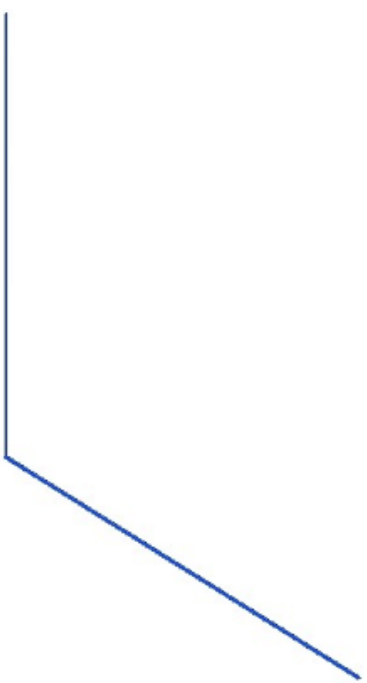
1. Canvas



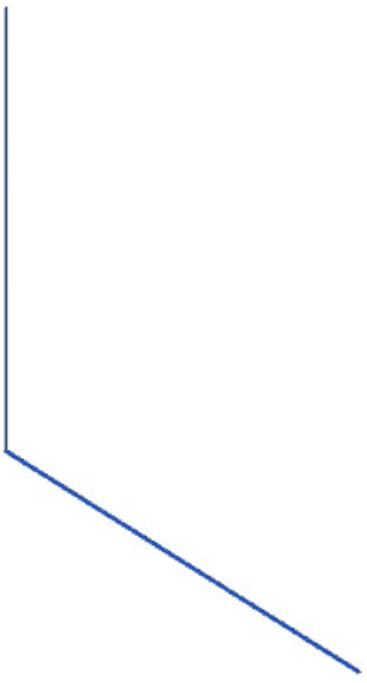
1.1 Fabric, canvas



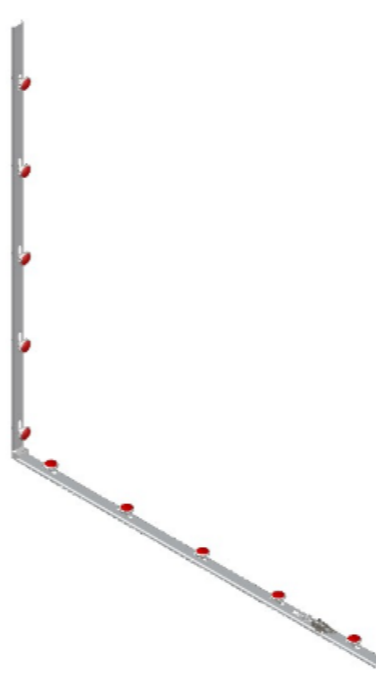
1.2 Neoprene cellular rubber tape



1.3 Solid silicone tube



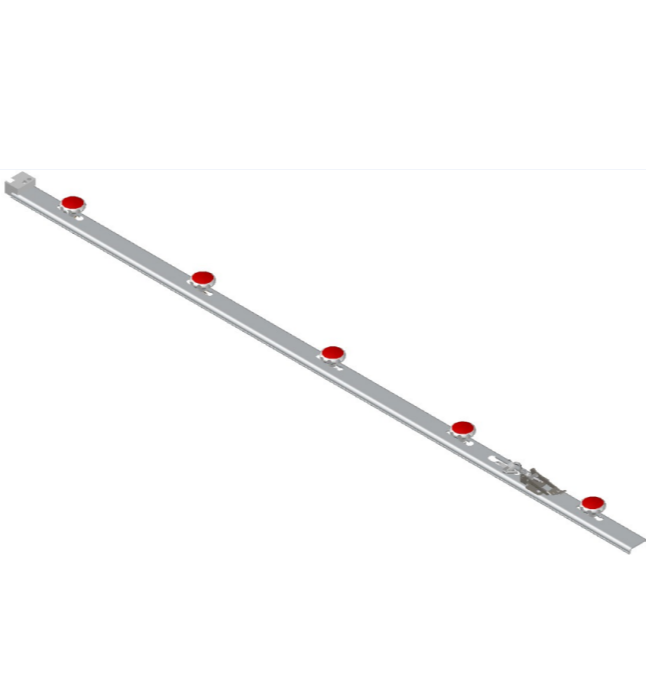
2. Right side connection



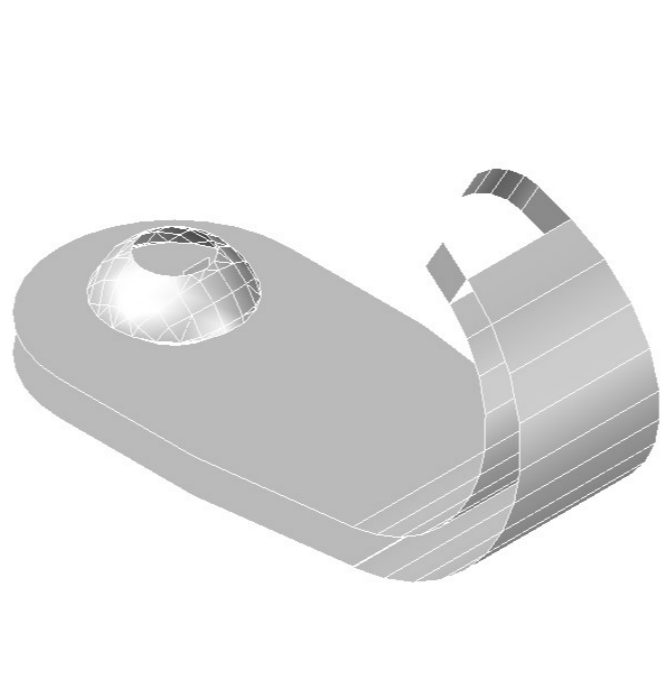
2.1 Vertical canvas clamp



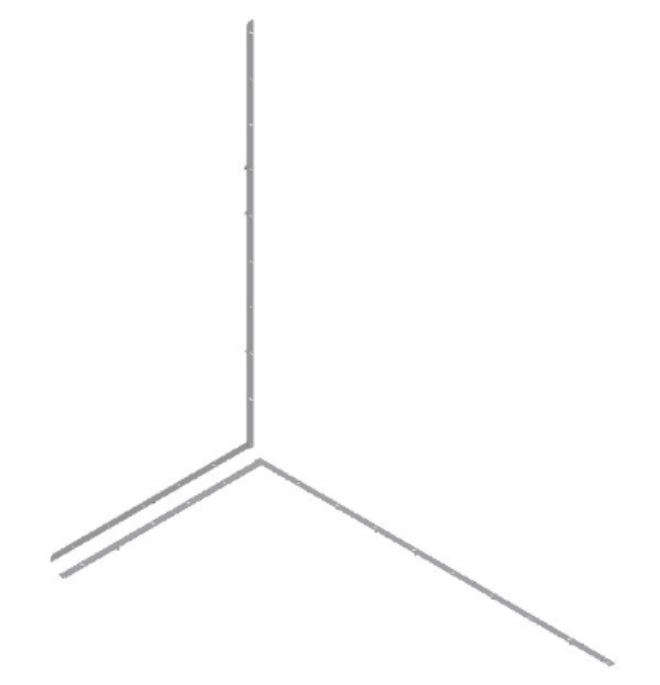
2.2 Horizontal canvas clamp



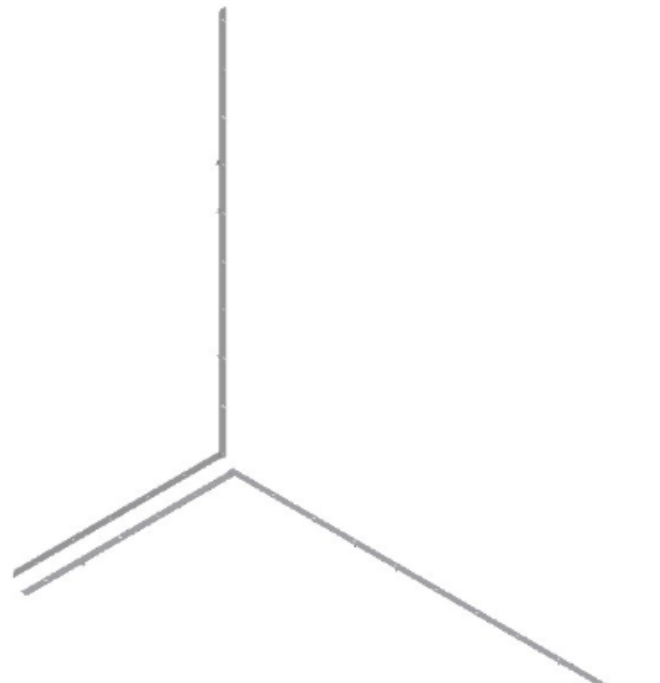
2.3 Canvas clamp hook



4. Left side connection



4.1 Canvas brackets



4.2 Bolts



2.1.1 Vertical canvas clamp



2.1.2 Fastening wheels



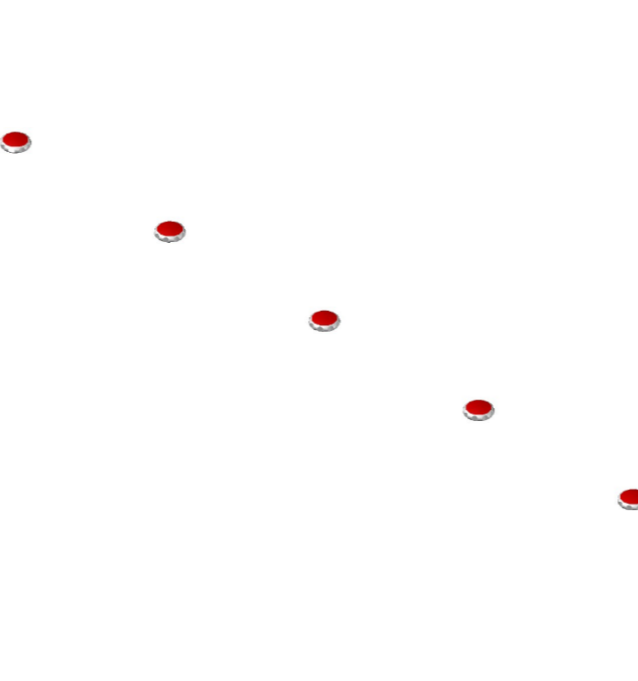
2.1.3 Bolts



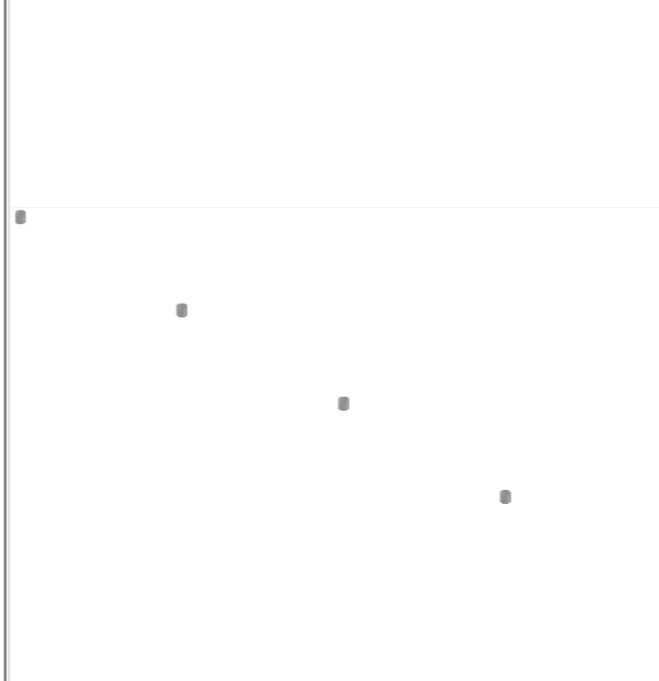
2.2.1 Vertical canvas clamp



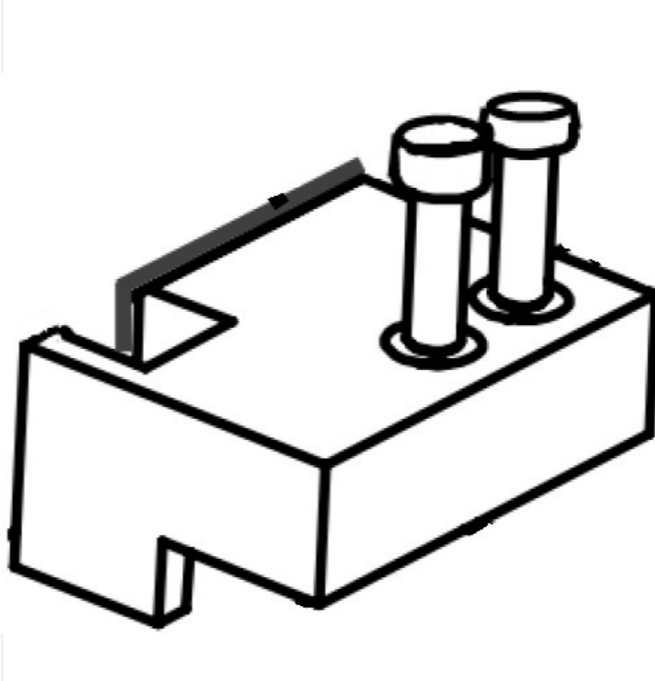
2.2.2 Fastening wheels



2.2.3 Bolts



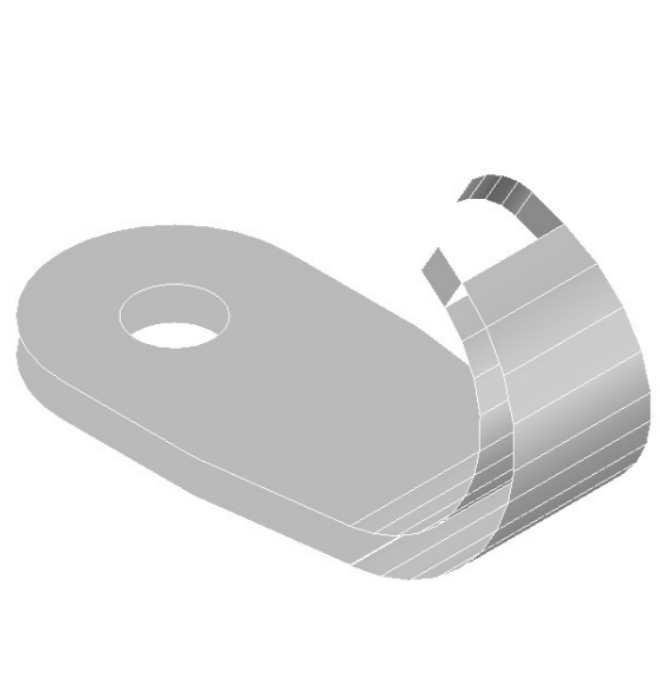
2.2.4 Canvas lock sheet



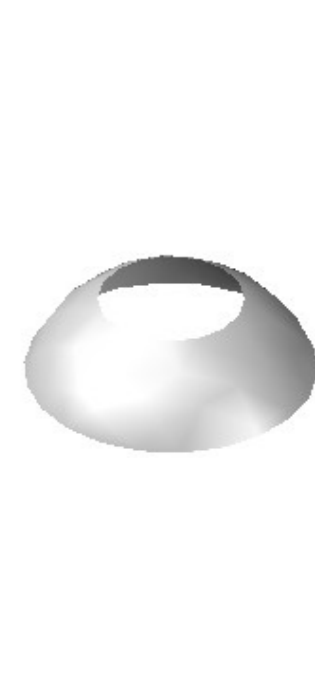
2.2.5 Latitudial eccentric lock



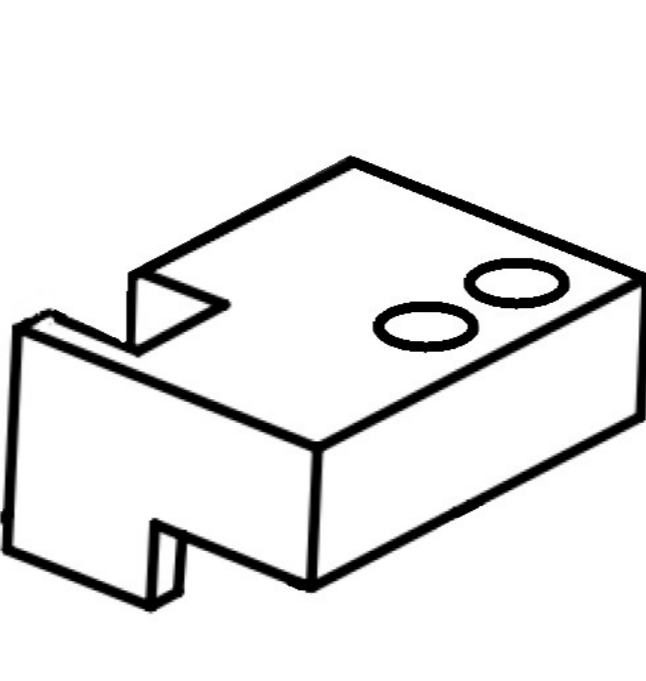
2.3.1 Canvas clamp hook



2.3.2 Bolts



2.2.4.1 Canvas lock sheet



2.2.4.2 Screws



2.2.5.1 Eccentric lock



2.2.5.2 Bolts

