

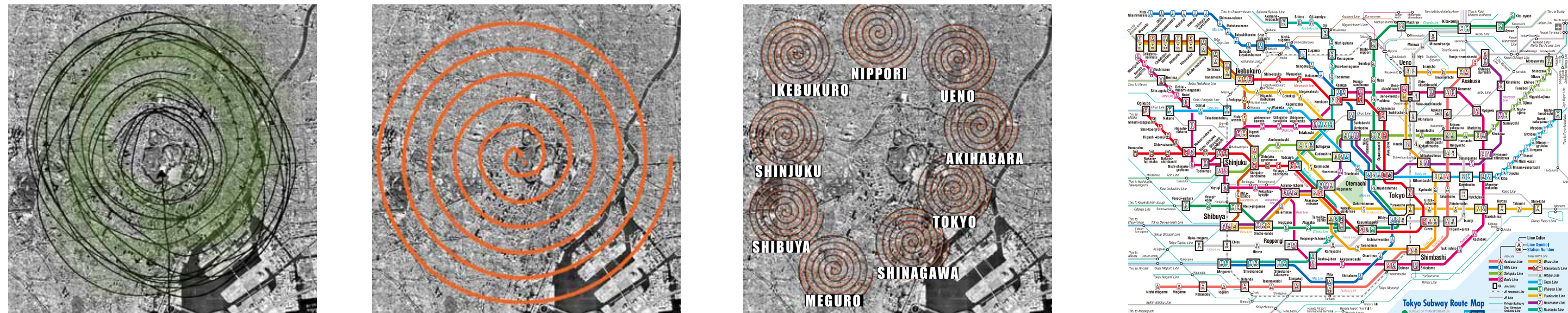
ANALYSIS | TOKYO



DENSITY COMPARISON



CITY LAYOUT AND INFRASTRUCTURE

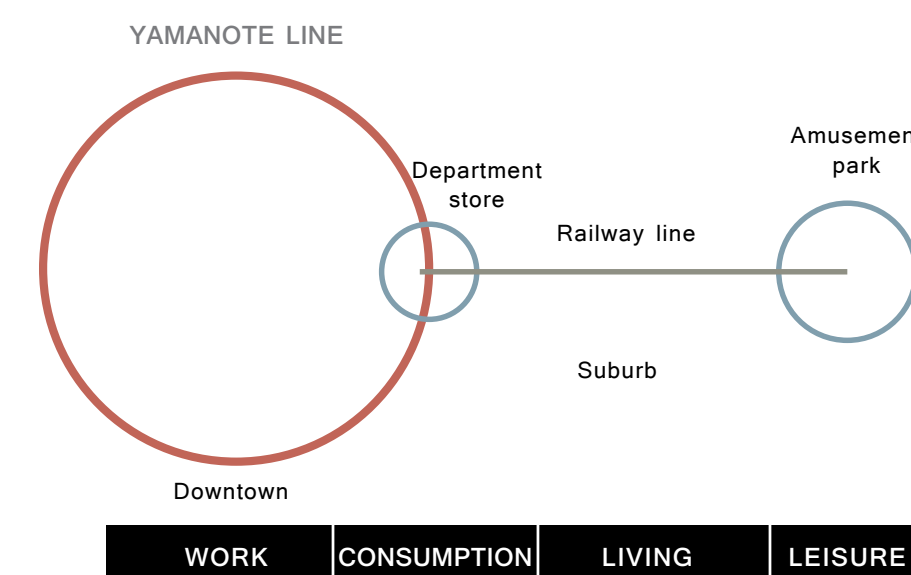


CENTERLESS CITY
Tokyo can be experienced like a tornado. The geographical center where the Emperor's palace is located, is dead in terms of activities most of the year. Activities take place along the Yamanote-loop.

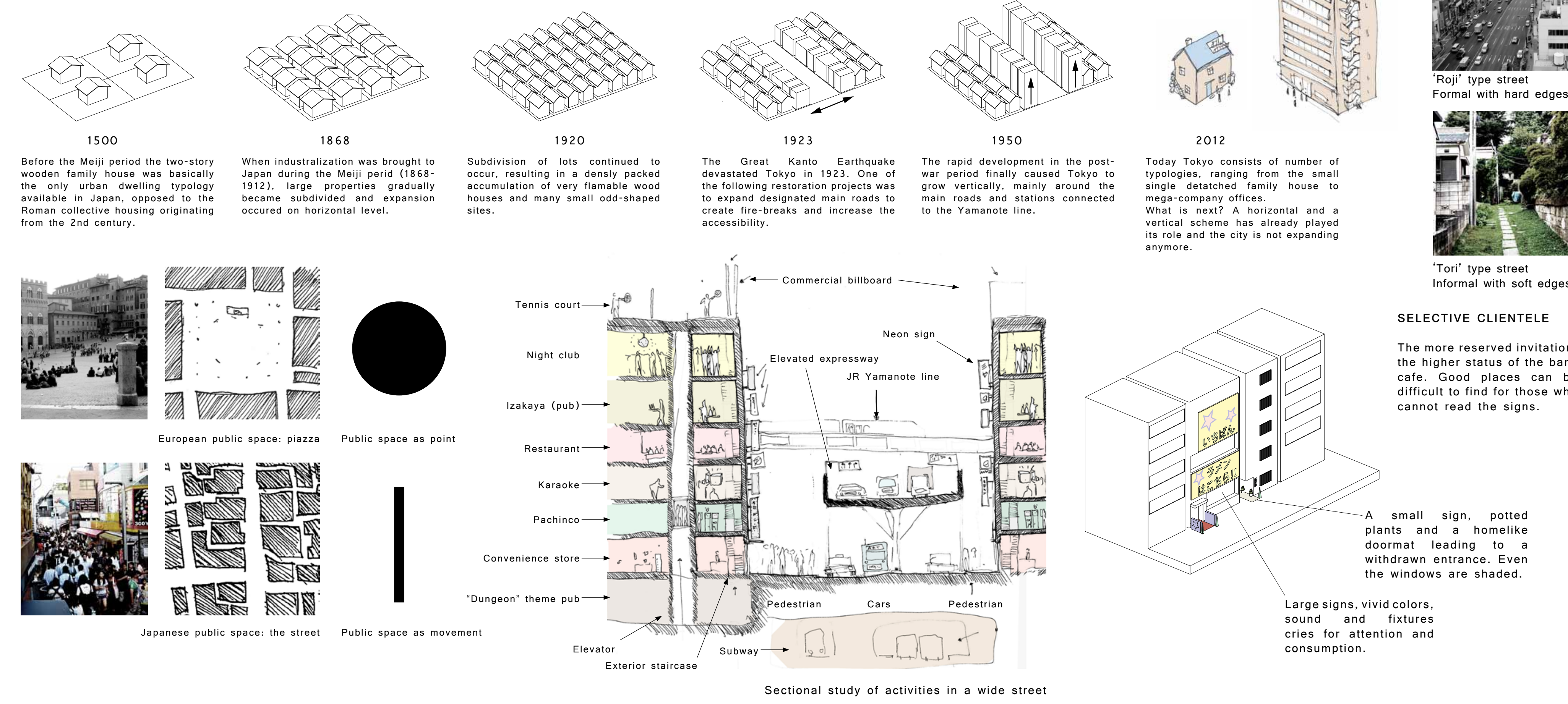
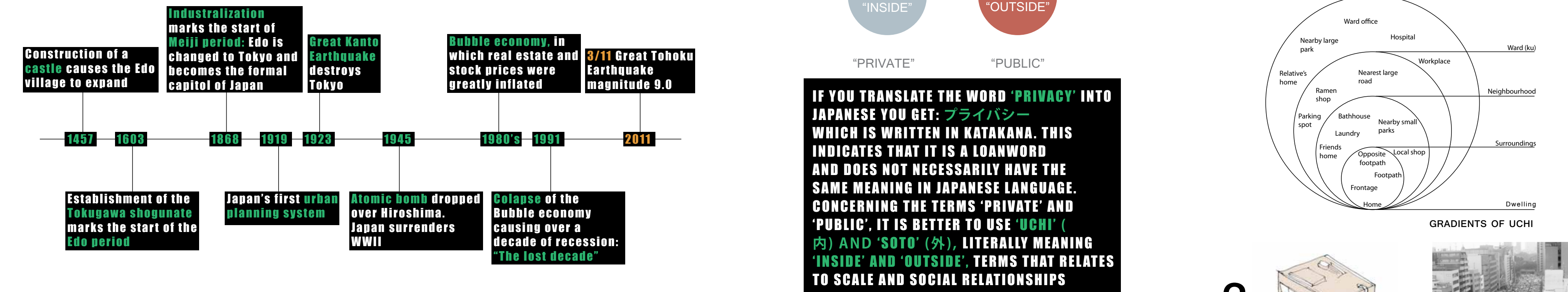
SPIRAL CITY
Tokyo can also be characterized as a spiral with few straight lines pointing towards the center.

SPIRAL HOTSPOTS
Activities are spirals out from each of the main stations along the Yamanote line.

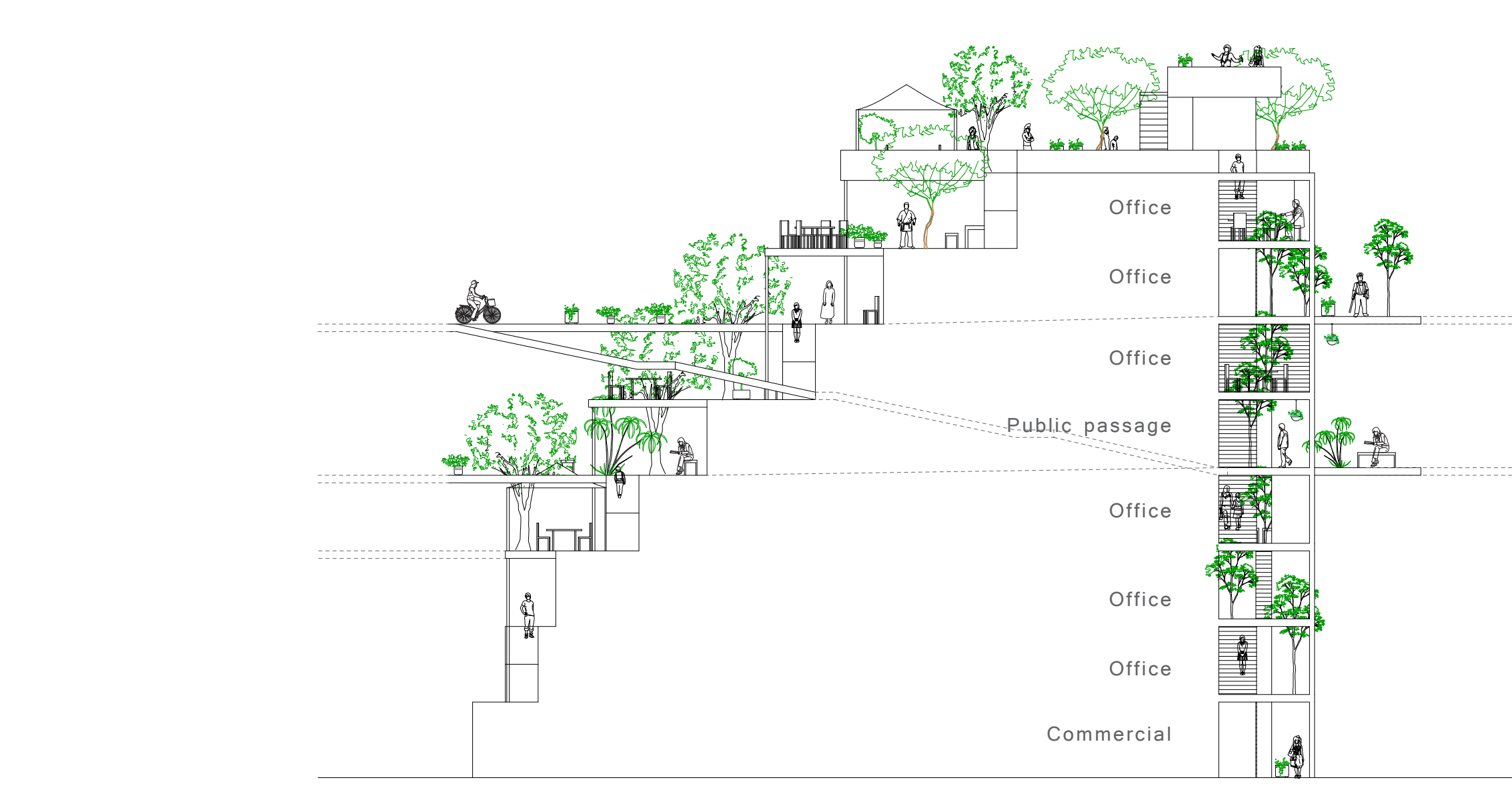
METRO SPAGHETTI
The public infrastructure is one of the most efficient and precise in the world, and 68 % of Tokyoites use public either transport, bicycle or walk.



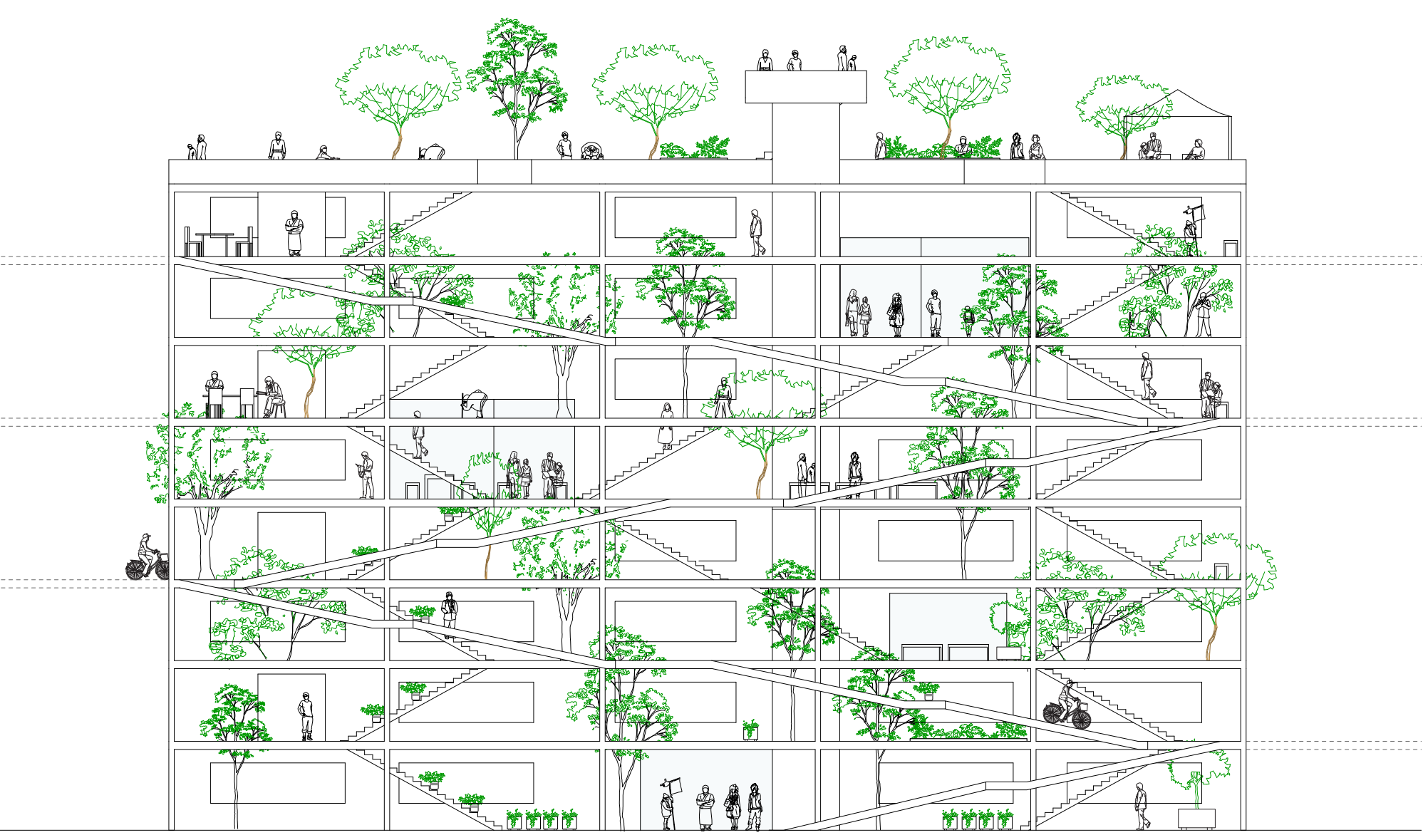
CONCLUSION: SINCE TOKYO CONSISTS OF MANY HOTSPOTS AND NOT A MAIN CENTER LIKE EUROPEAN CITIES, A SITE-SPECIFIC INVESTIGATION OF A MIKE-ABILITY CONCEPT CAN PROVE TO BE VALID AND APPLIED ALL OVER TOKYO



TYPOLGY | VERTICAL GENERATORS



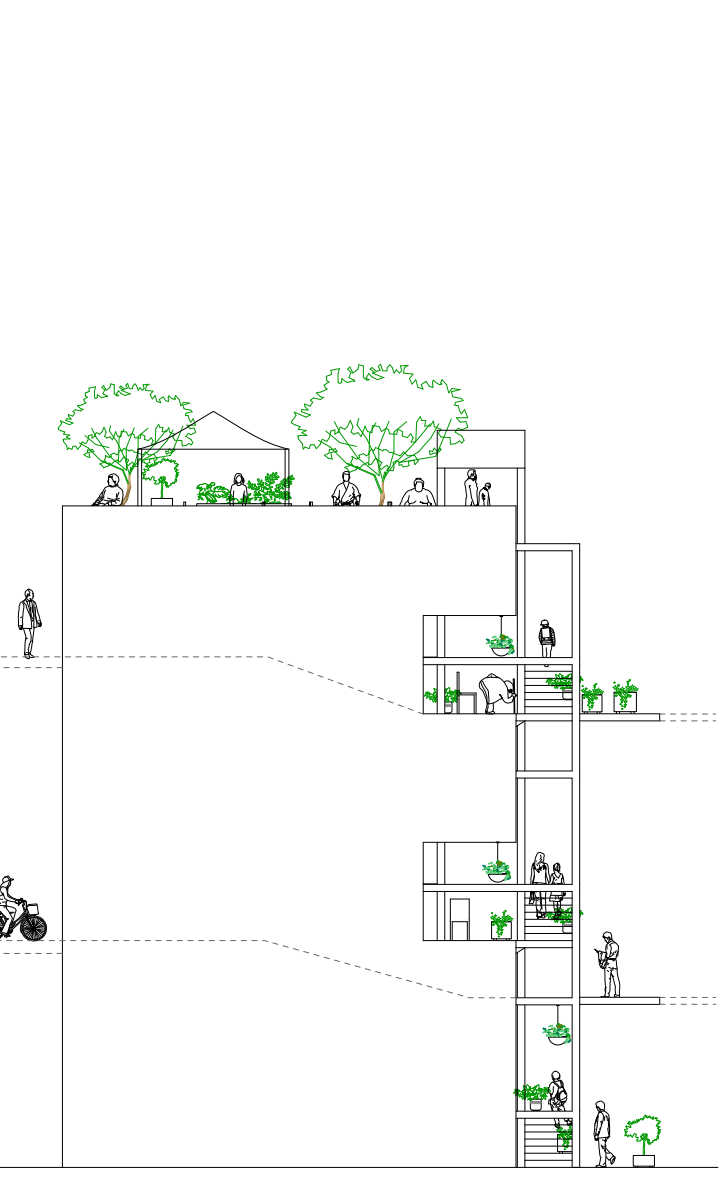
Office building side elevation 1:200



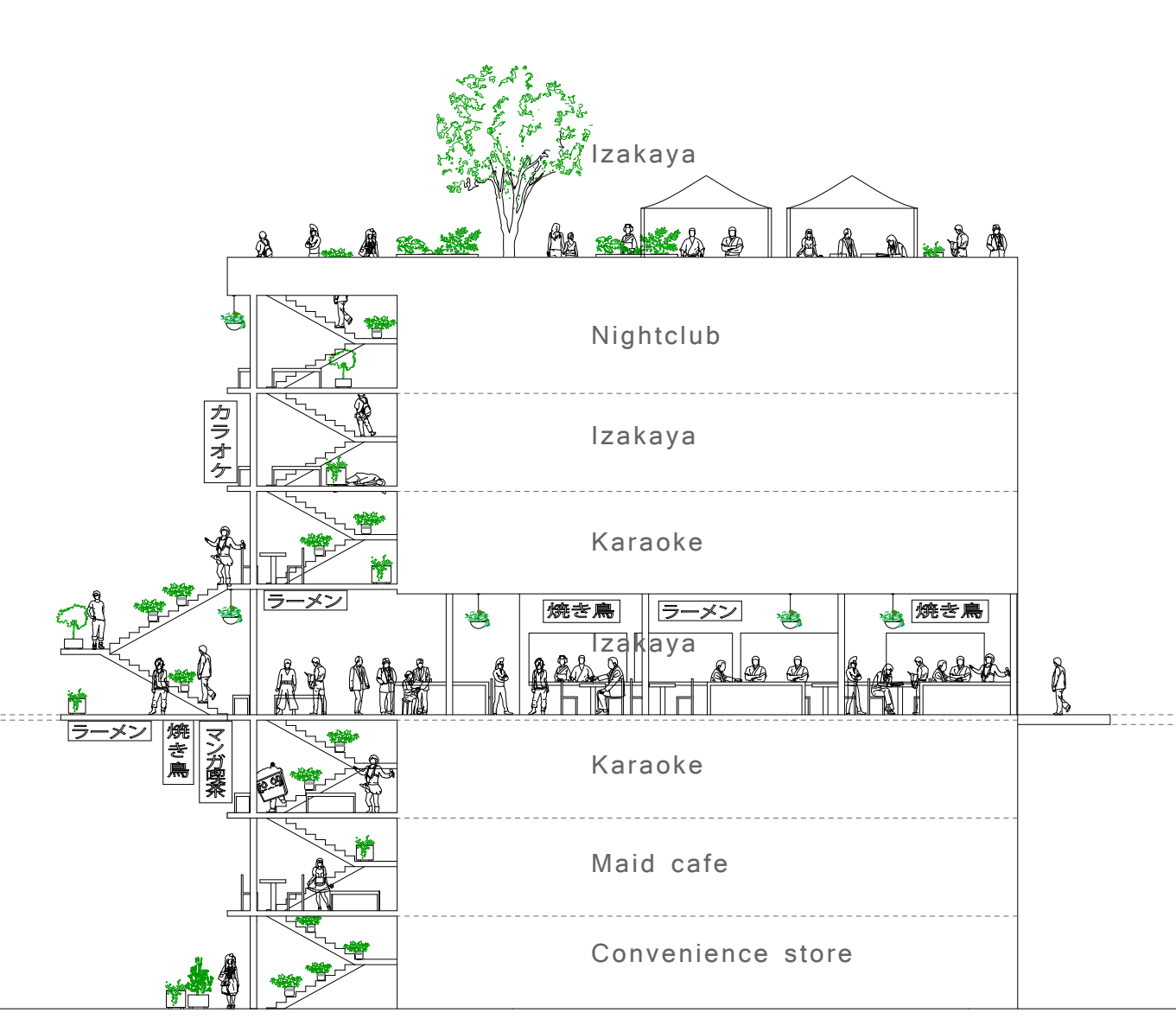
Office building front elevation 1:200



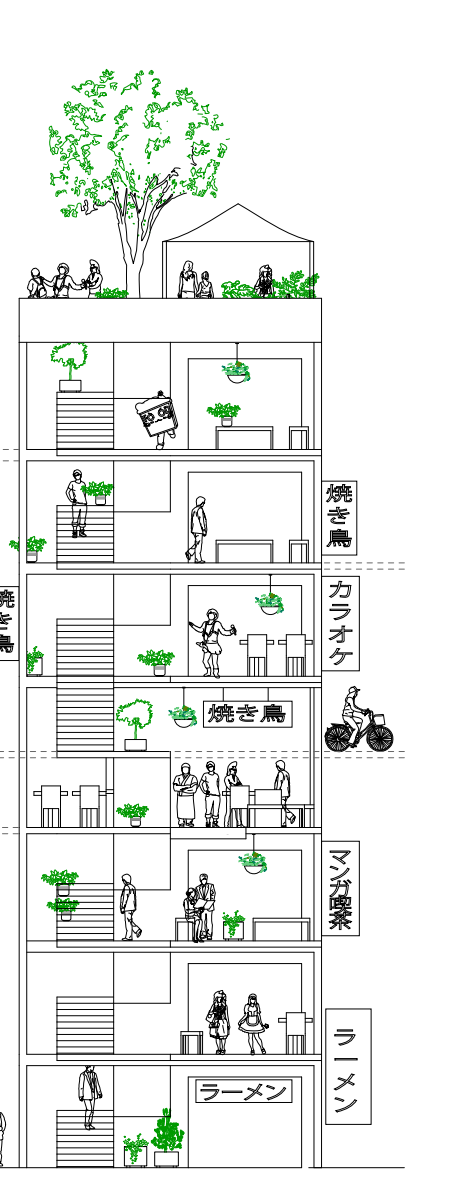
Apartment block front elevation 1:200



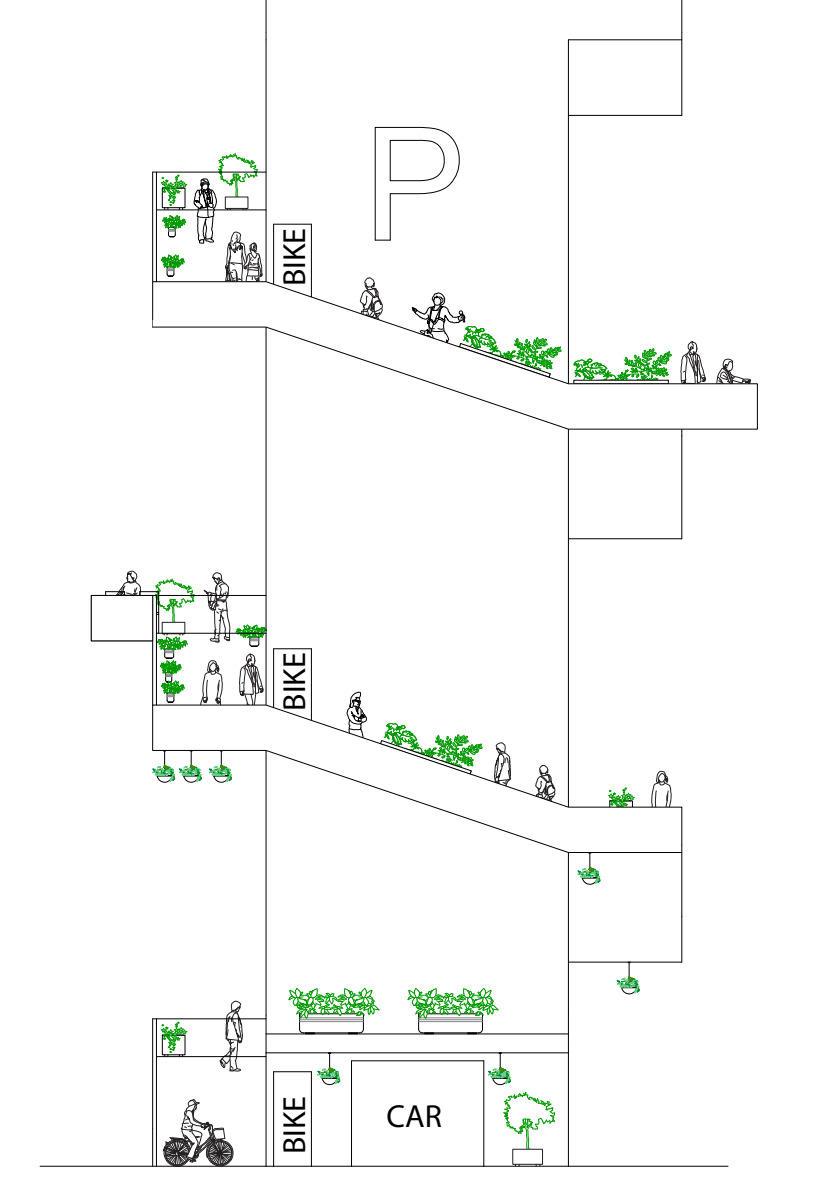
Apartment block side elevation 1:200



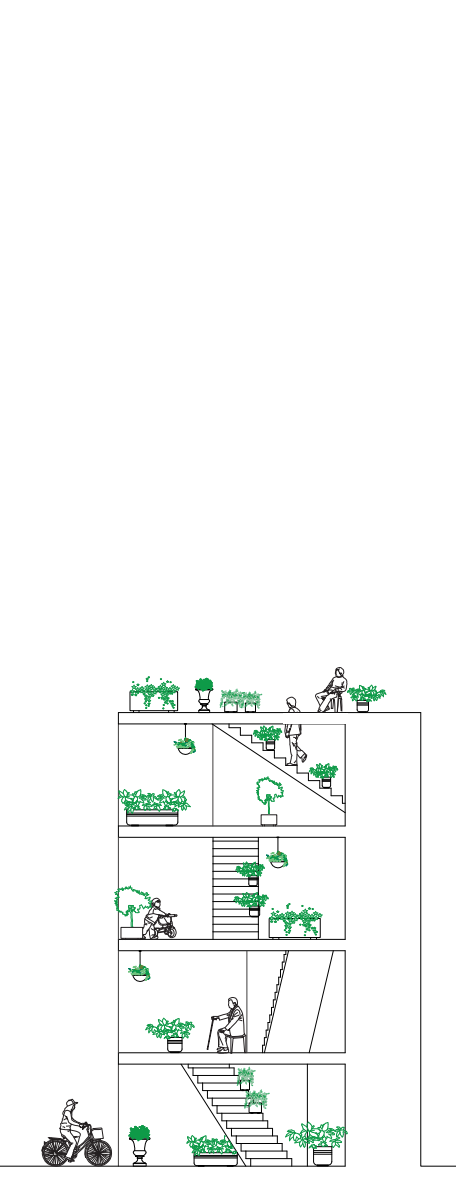
Entertainment 'pencil' building side elevation 1:200



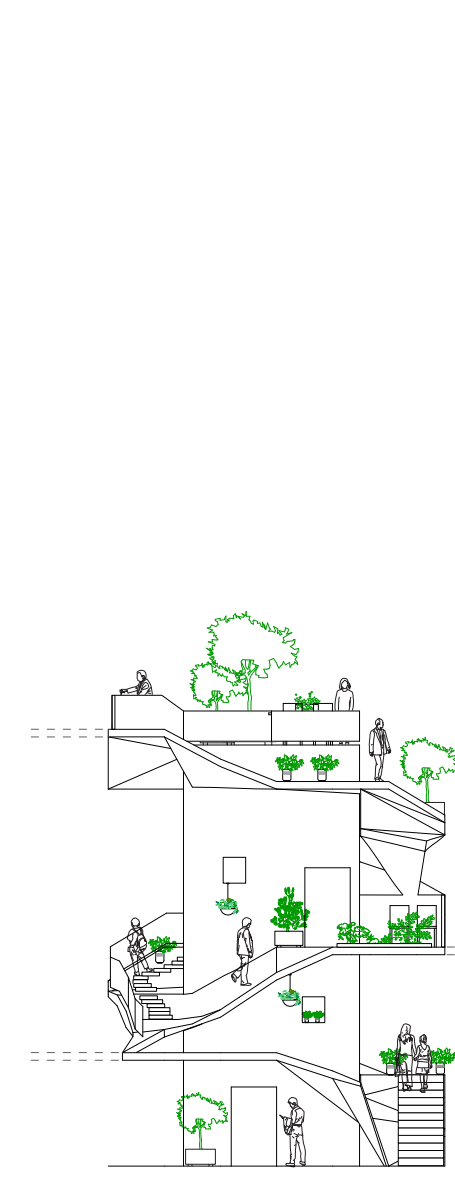
Front elevation 1:200



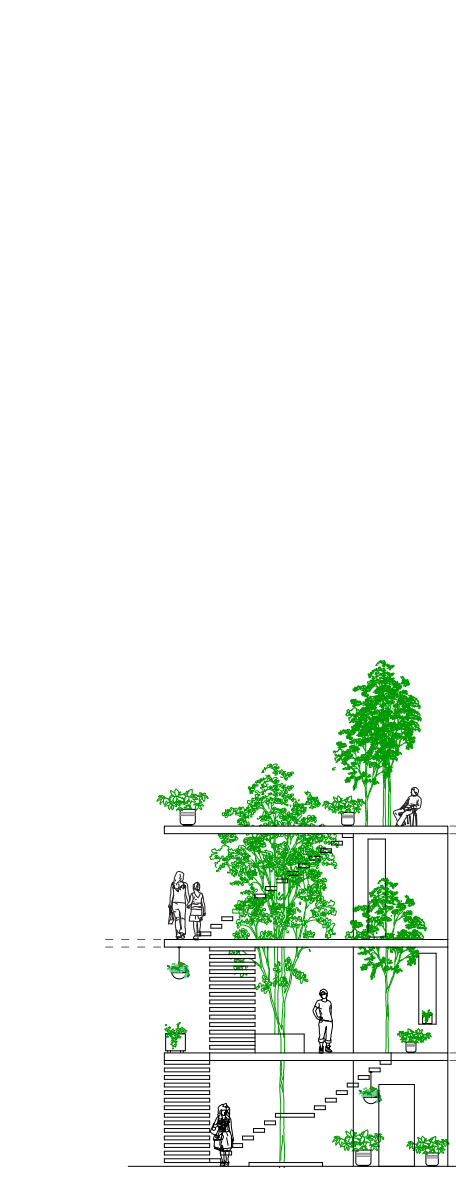
Parking Tower elevation 1:200



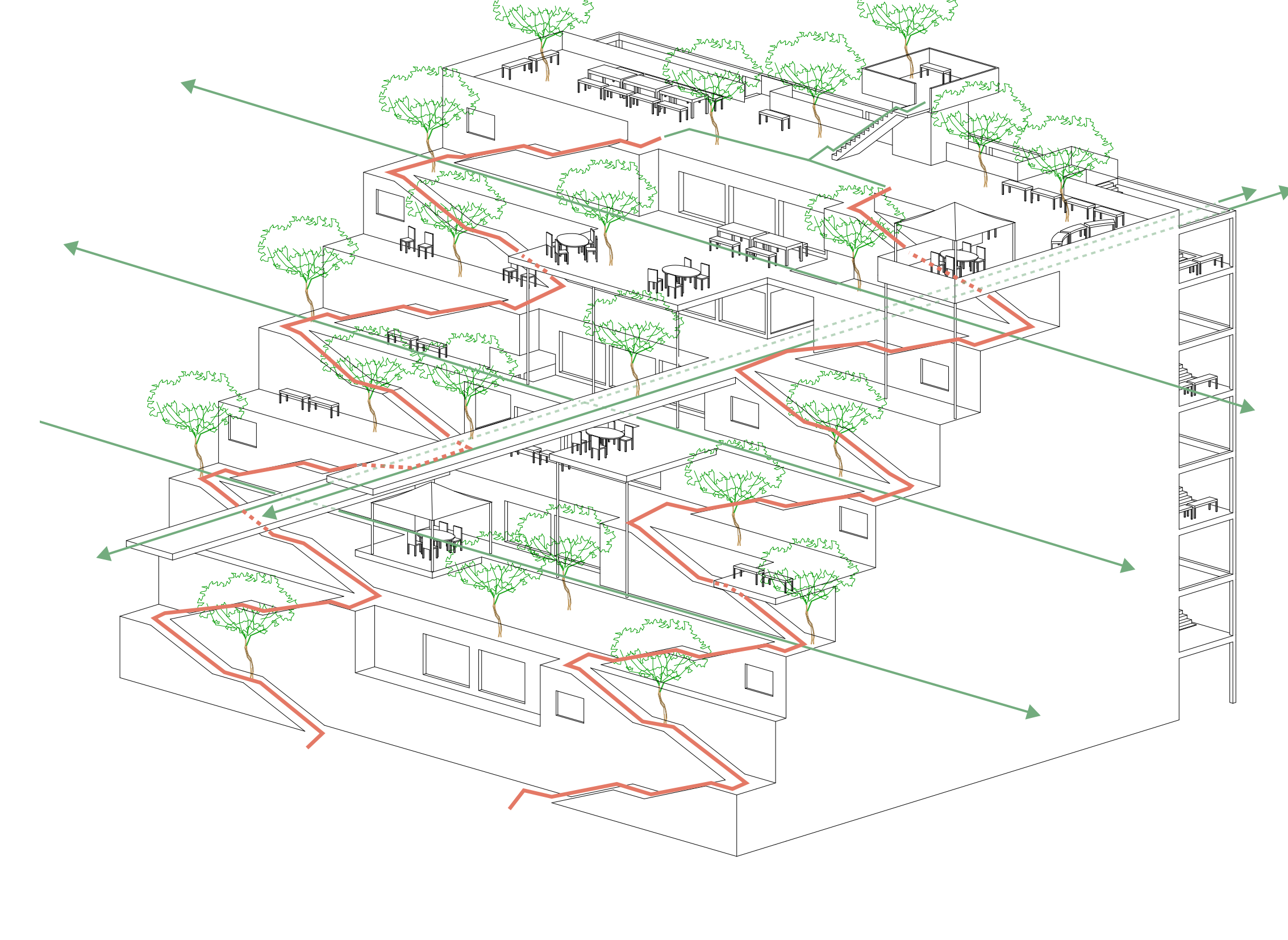
Single detached house I 1:200



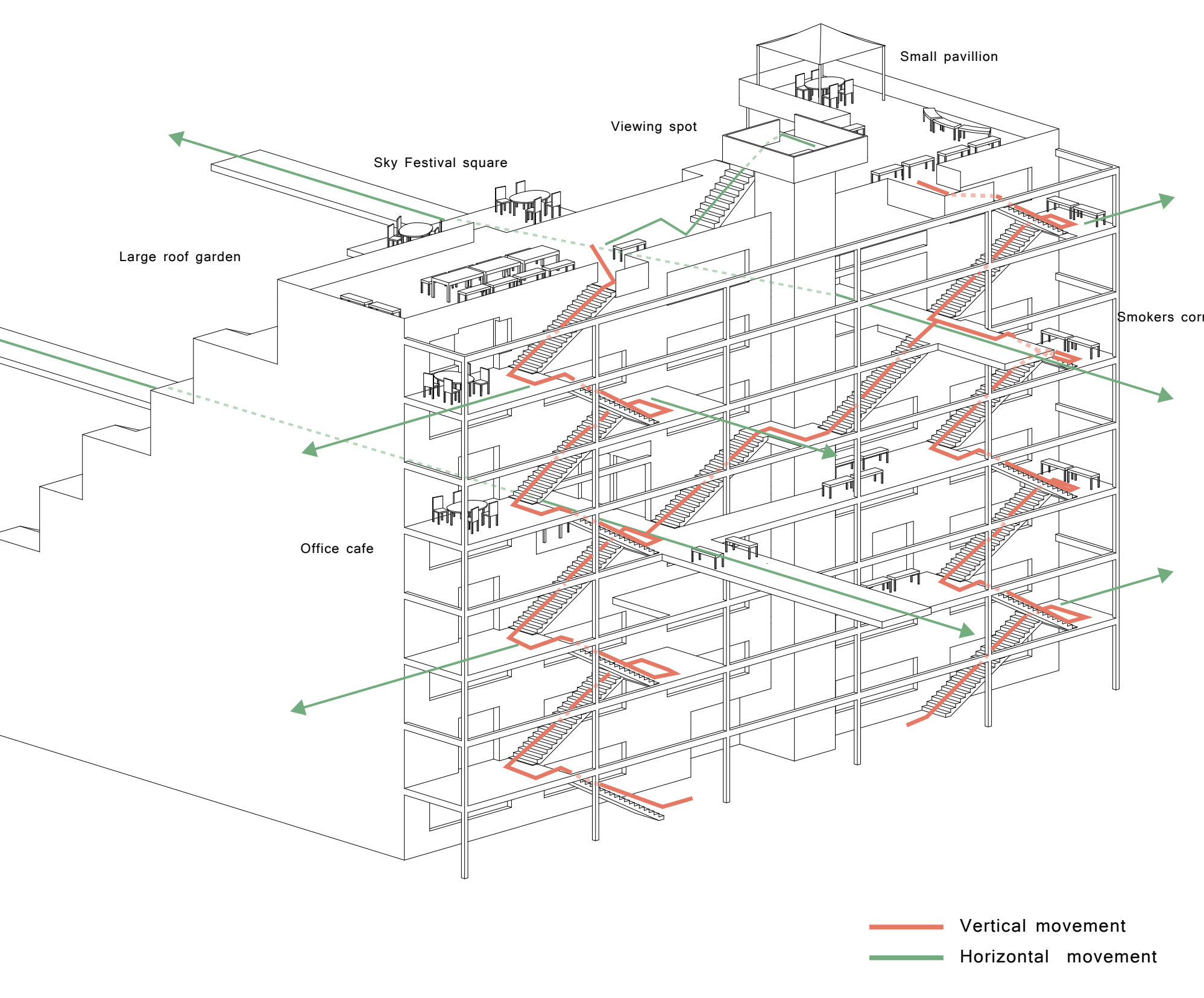
Single detached house II 1:200



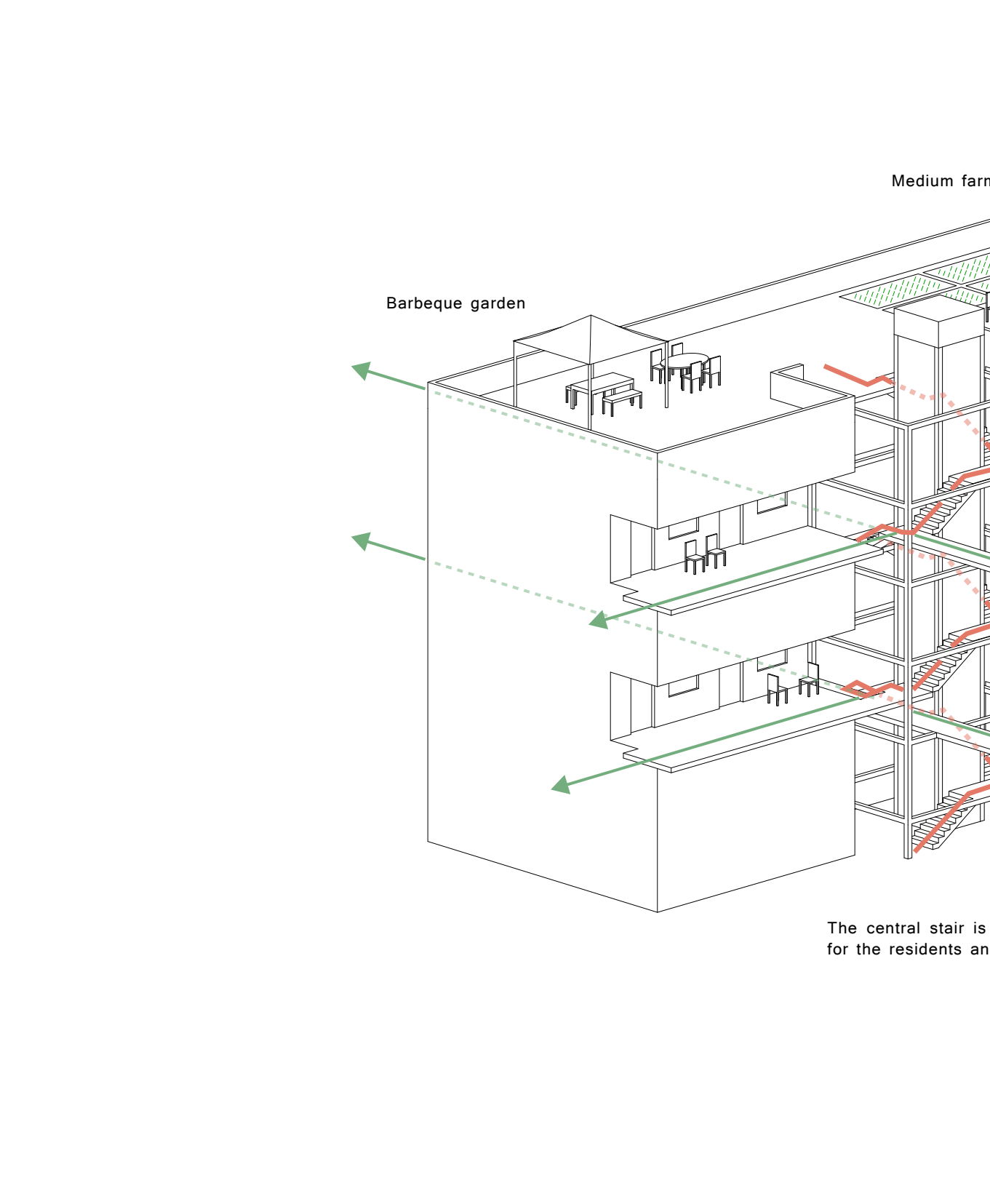
Single detached house III 1:200



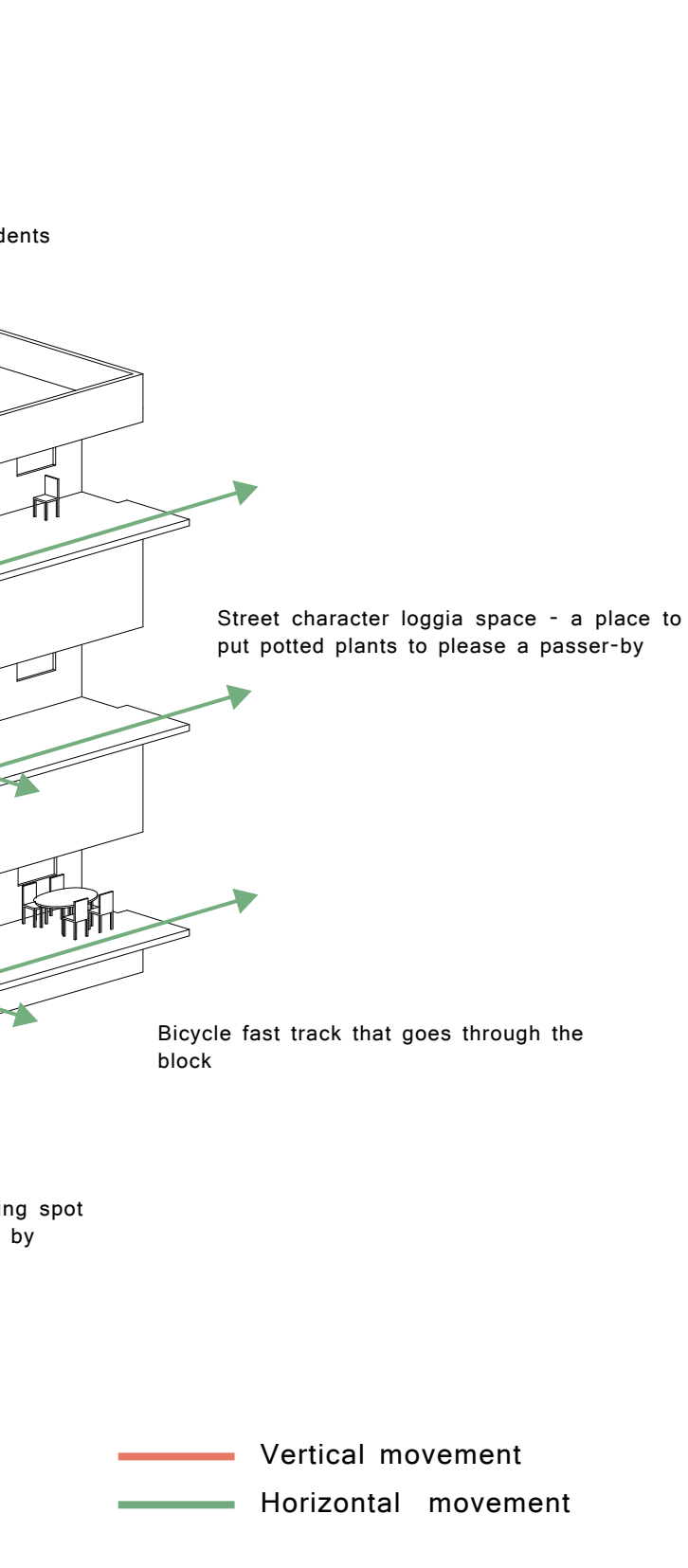
Office building side elevation 1:200



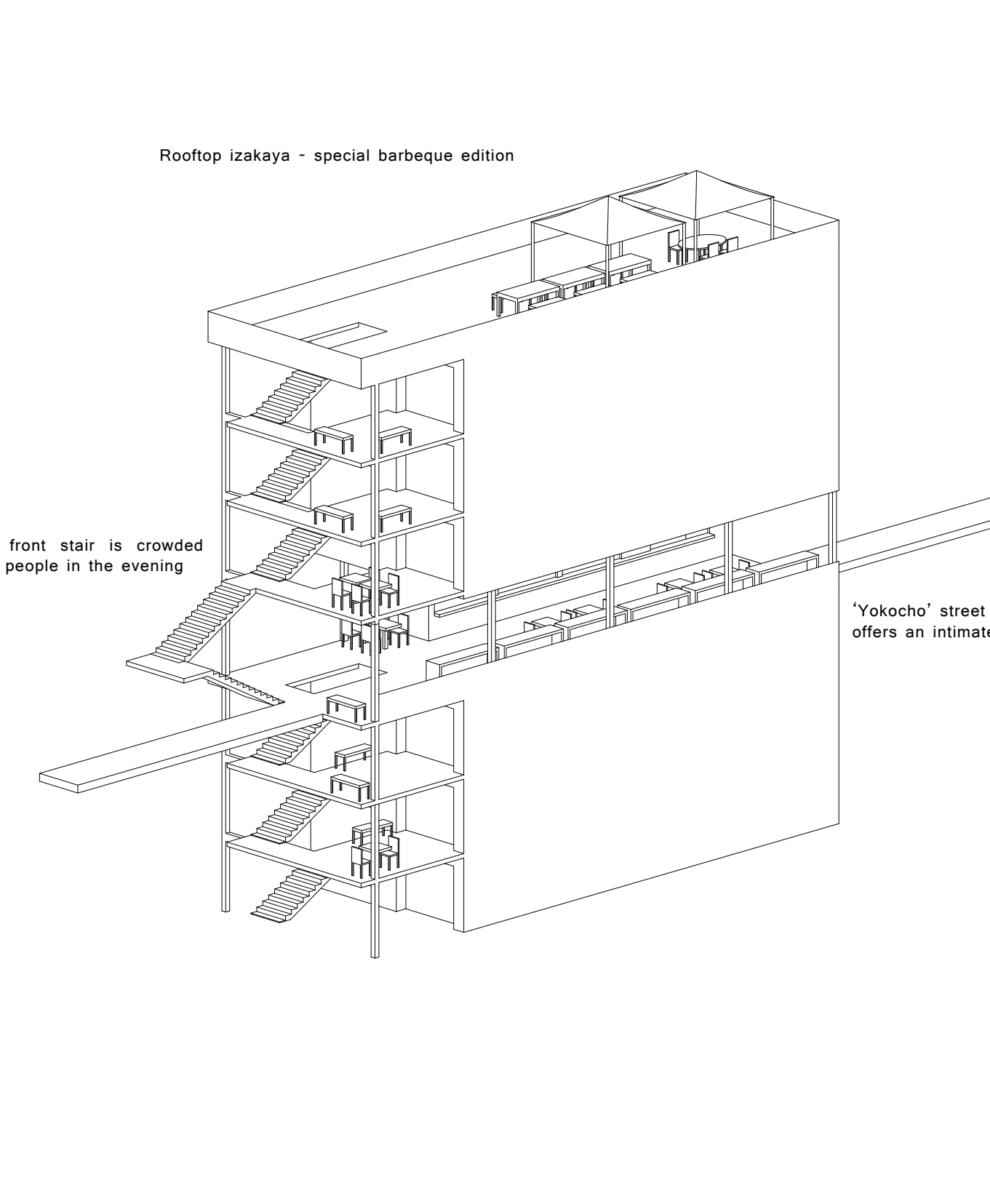
Office building front elevation 1:200



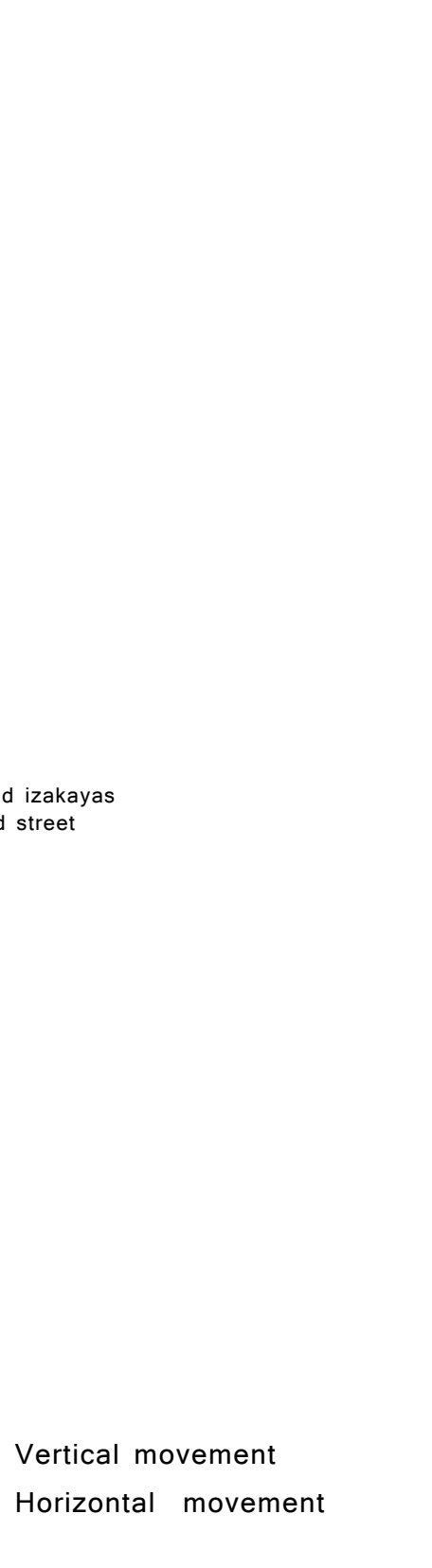
Apartment block front elevation 1:200



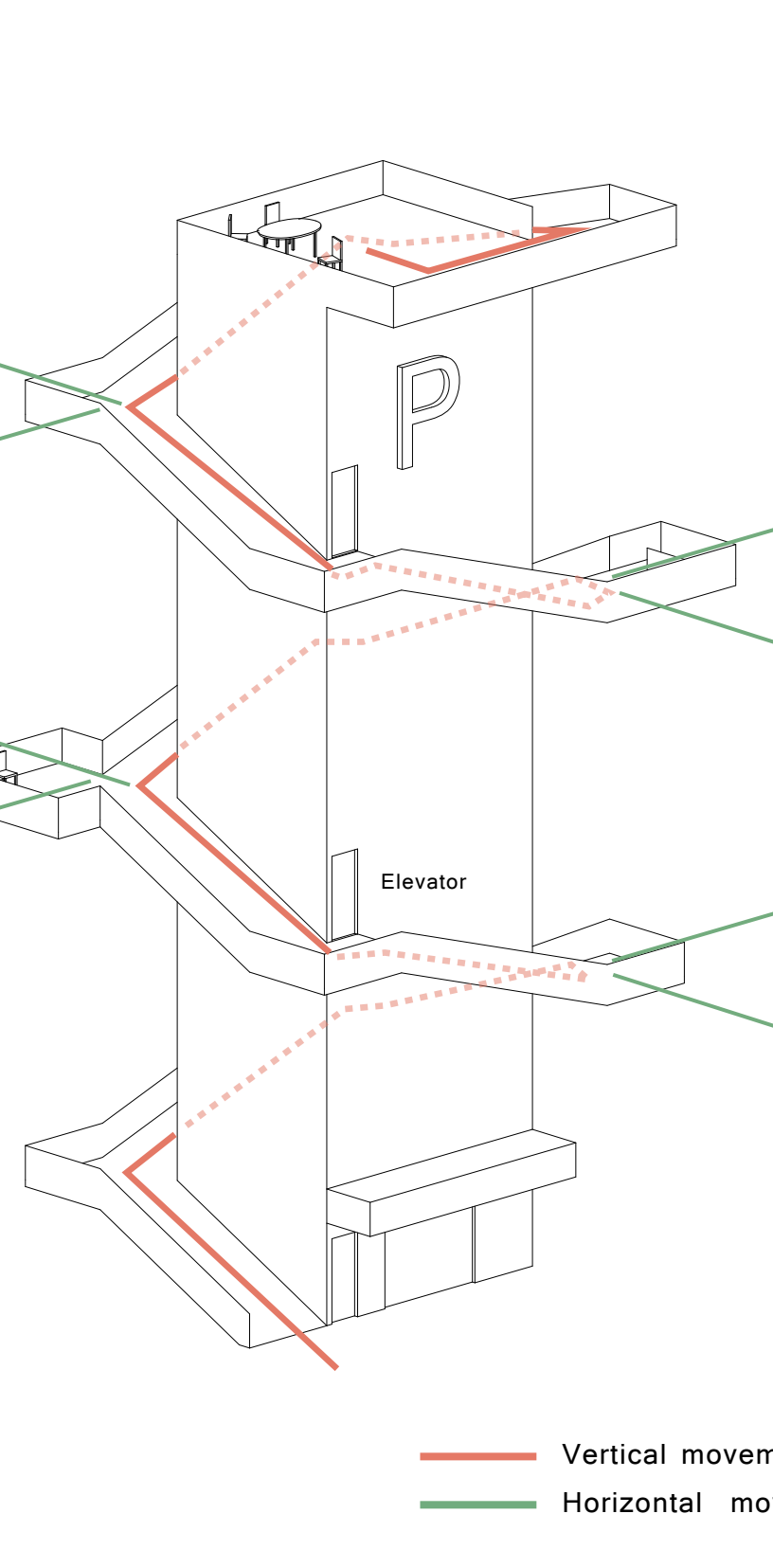
Apartment block side elevation 1:200



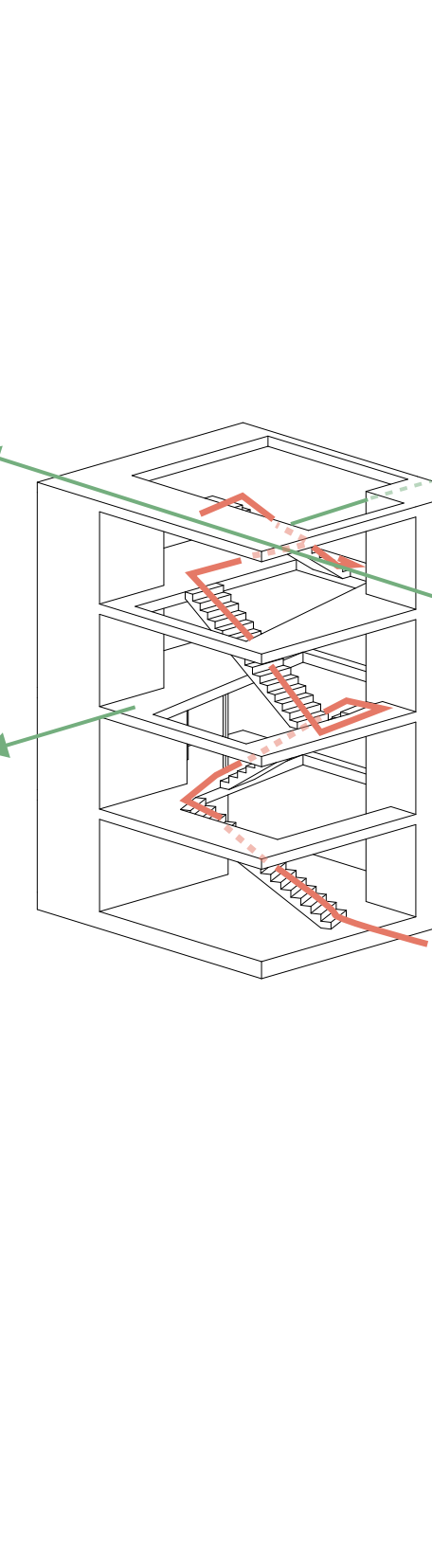
Entertainment 'pencil' building side elevation 1:200



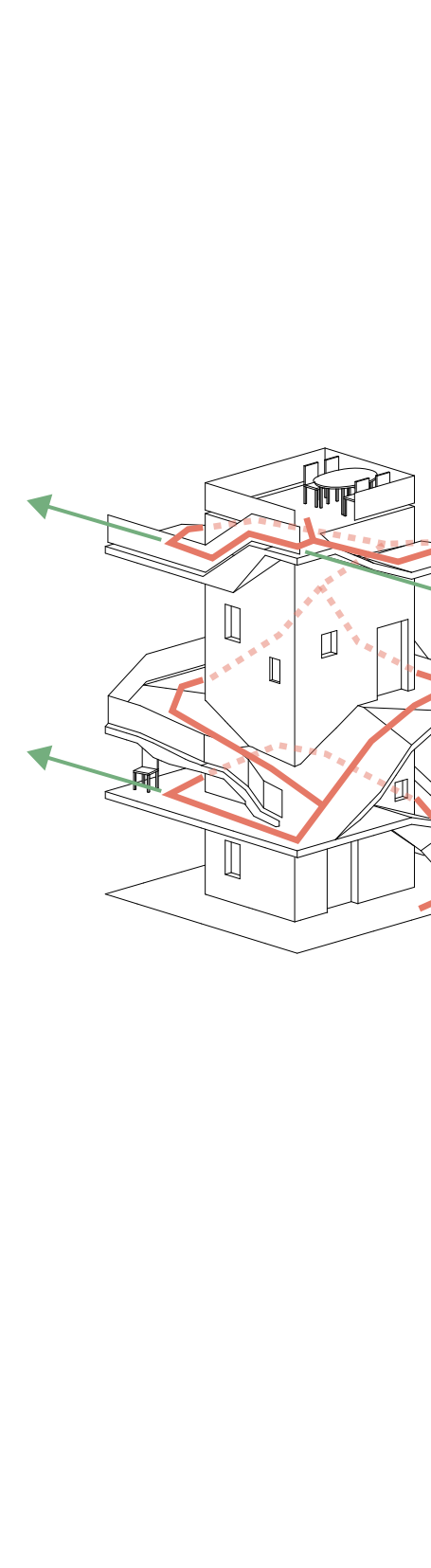
Front elevation 1:200



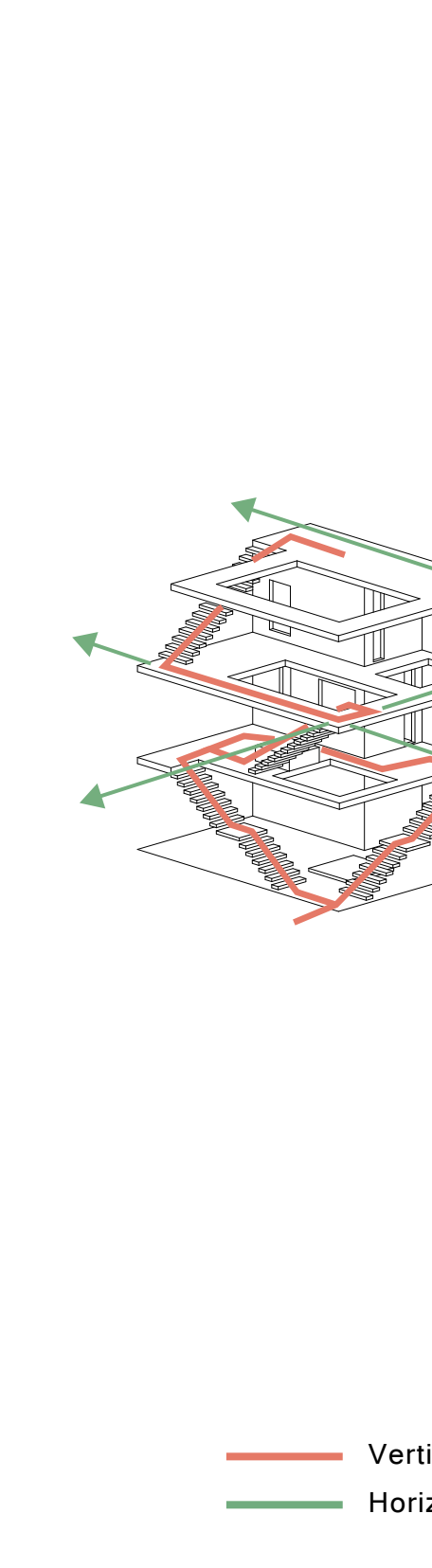
Parking Tower elevation 1:200



Single detached house I 1:200



Single detached house II 1:200

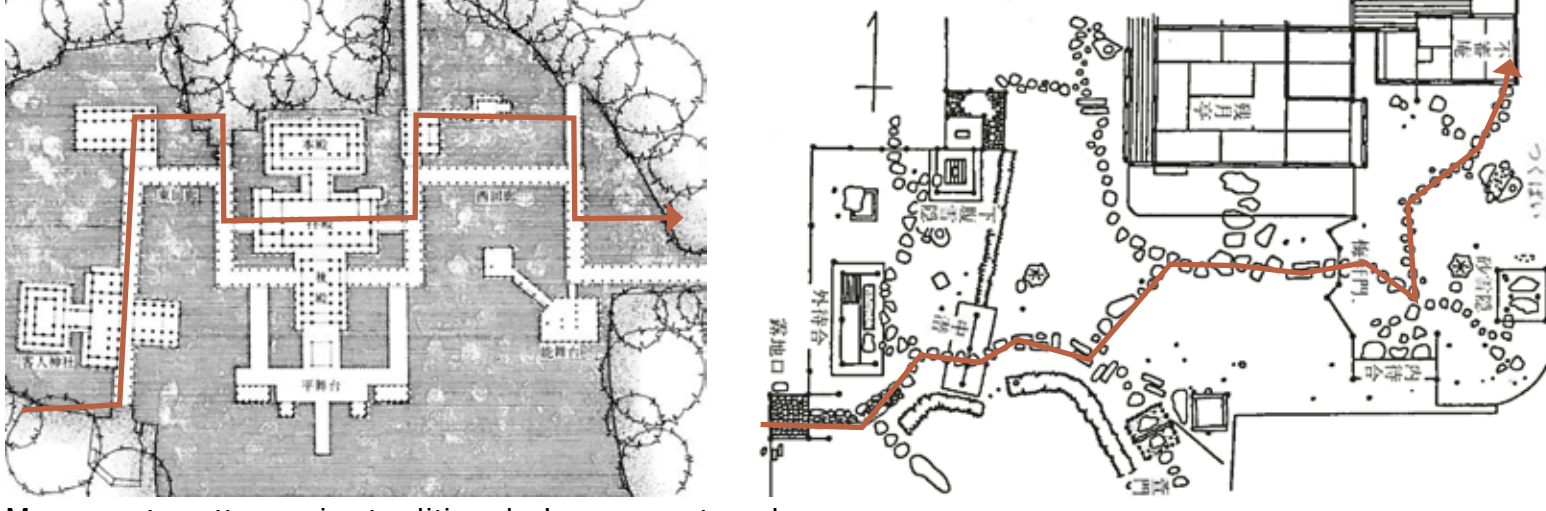


Single detached house III 1:200

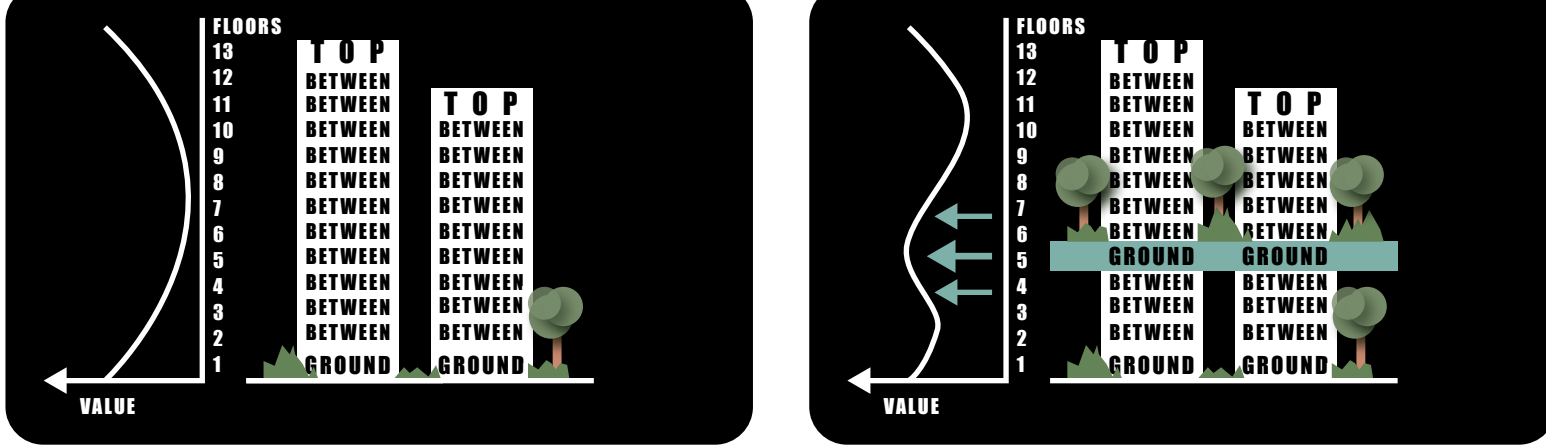
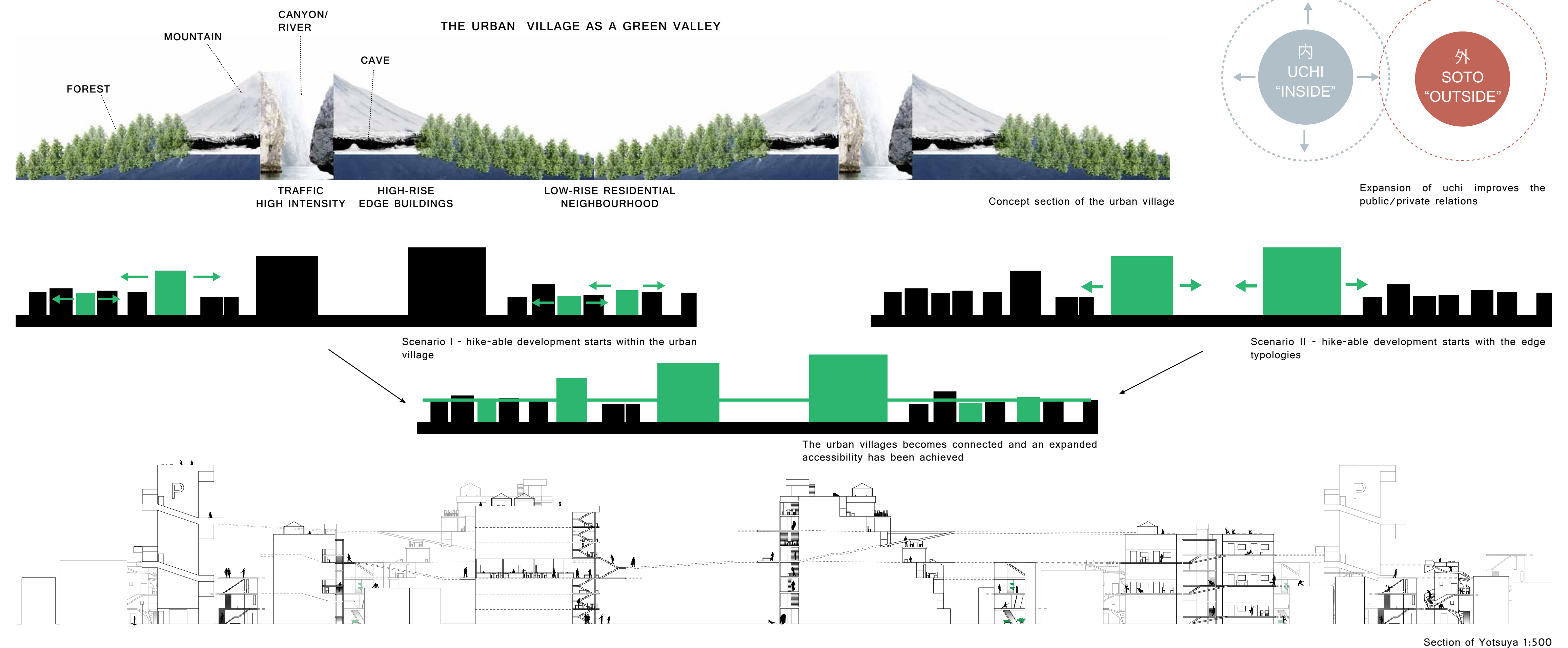
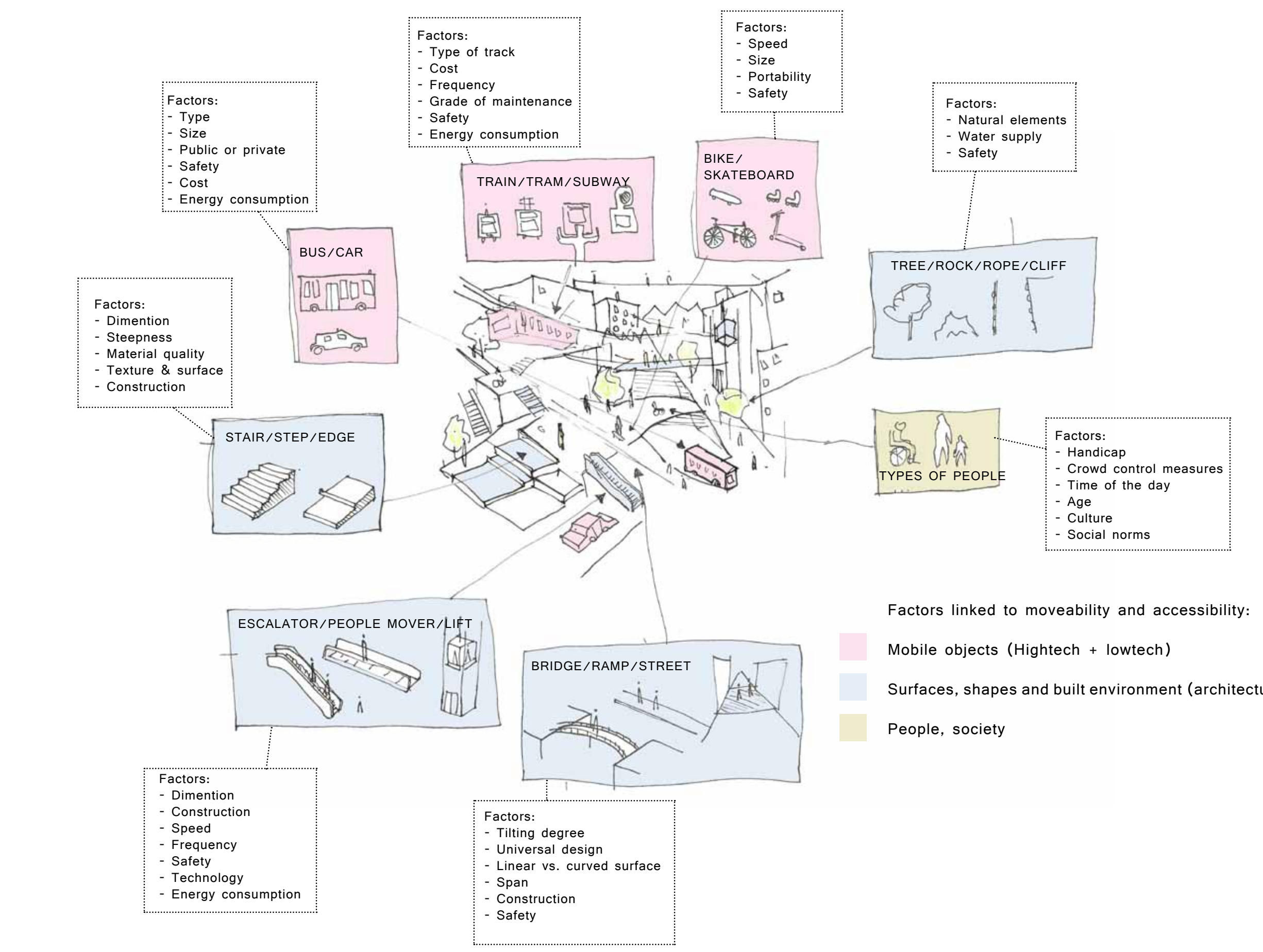
STUDIES |



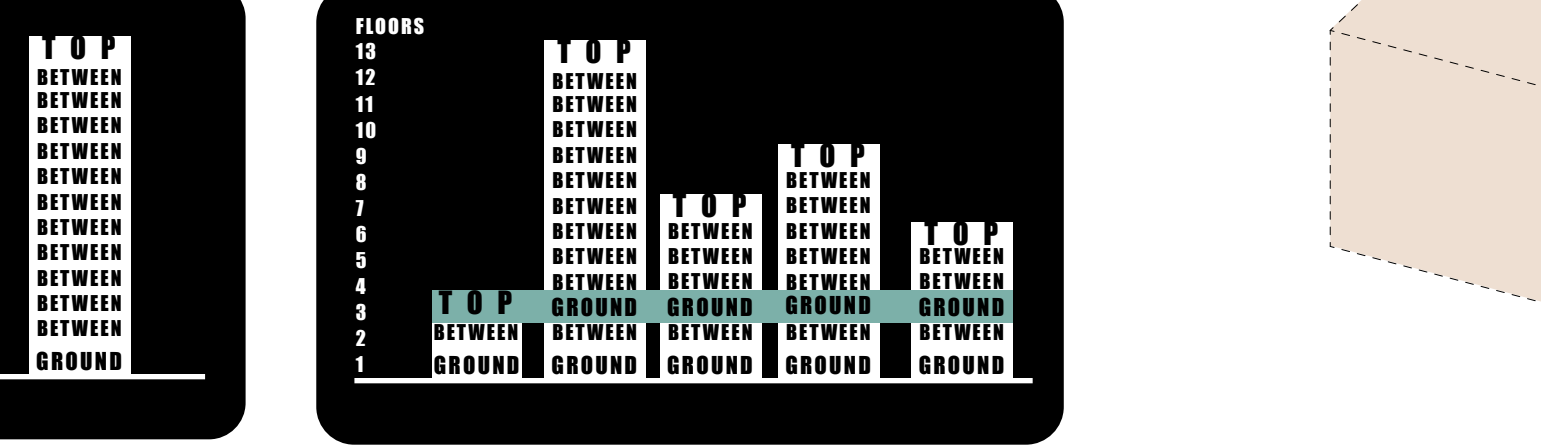
This is the same layout as the office typology elevation, only without the building. With small paths, it looks like a horizontal park. Is a sort of vertical park achieved, based on the premise of the movement in the Japanese garden?



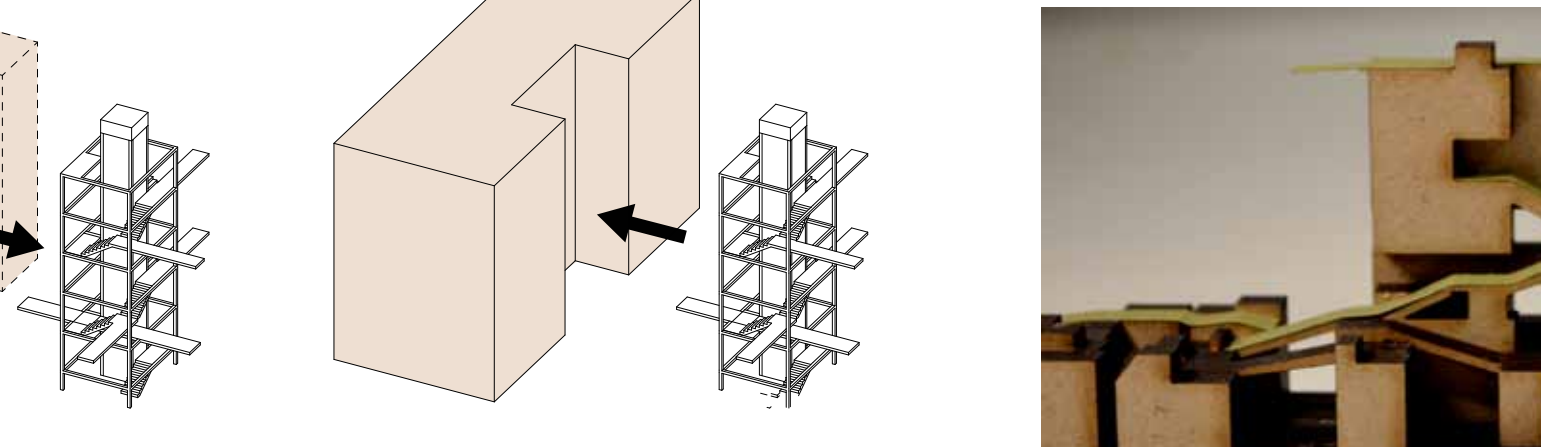
Movement patterns in traditional Japanese temple villas and gardens do not follow a rigid straight line.



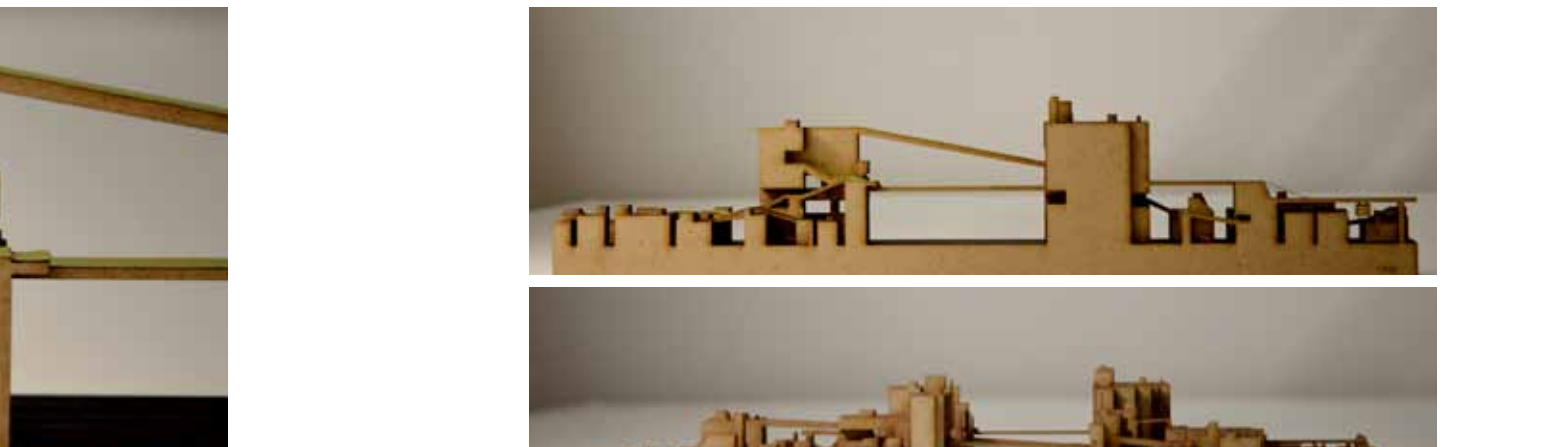
The value of a building is often highest at the ground floor (commercial) and top floor (penthouse).



The value of a building is often highest at the ground floor (commercial) and top floor (penthouse).



The value of a building is often highest at the ground floor (commercial) and top floor (penthouse).



The value of a building is often highest at the ground floor (commercial) and top floor (penthouse).



The value of a building is often highest at the ground floor (commercial) and top floor (penthouse).



The value of a building is often highest at the ground floor (commercial) and top floor (penthouse).