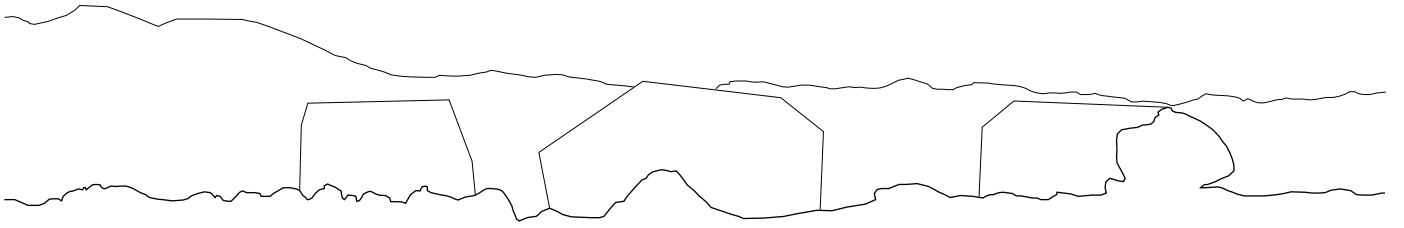
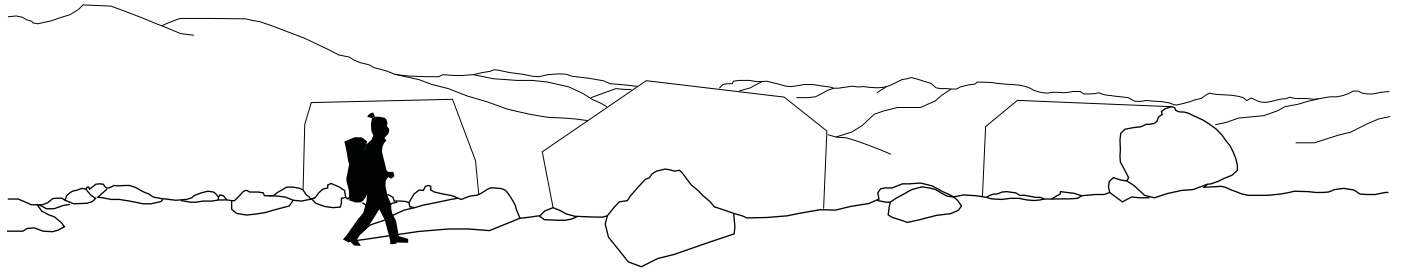


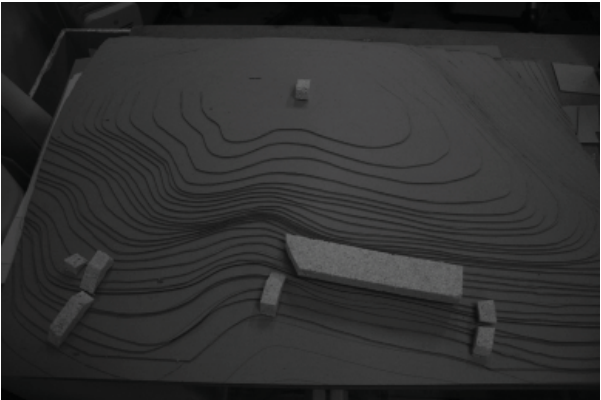
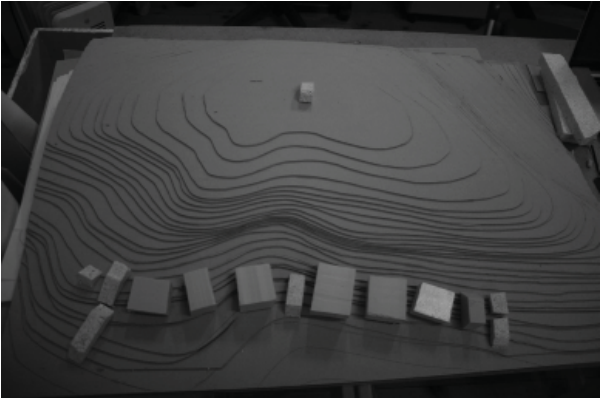


# et innblikk i prosessen

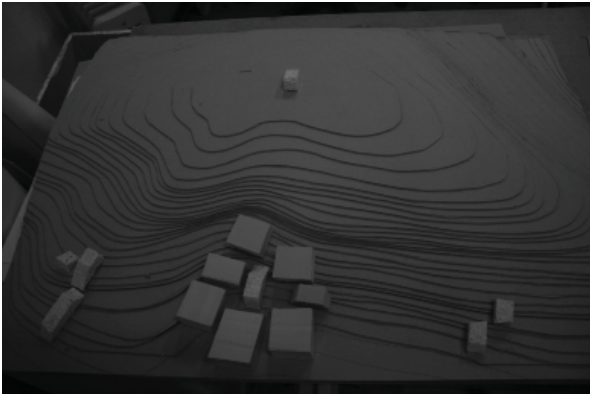
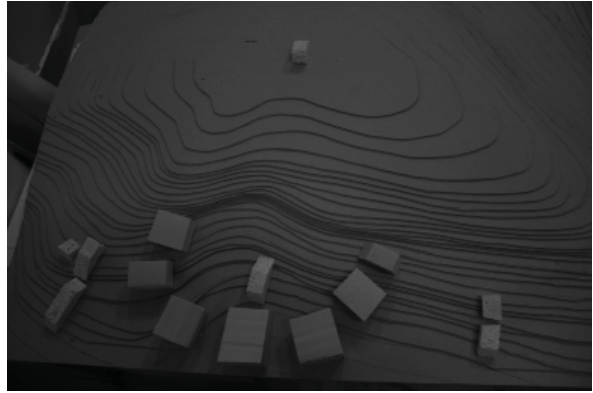
Elisabeth Sponås  
masteroppgave i arkitektur våren 2012





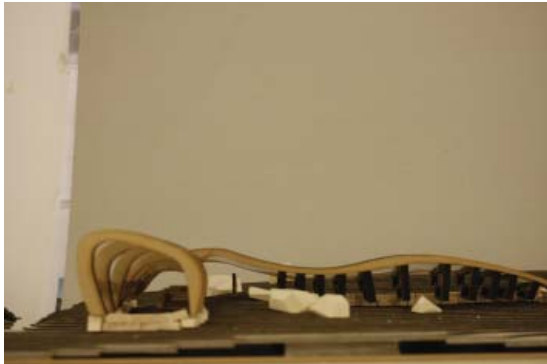






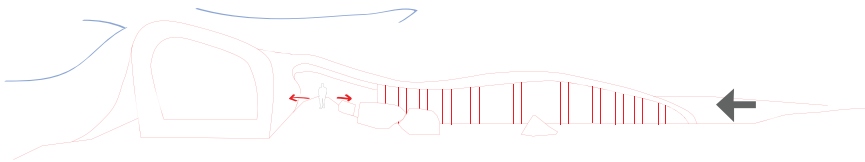
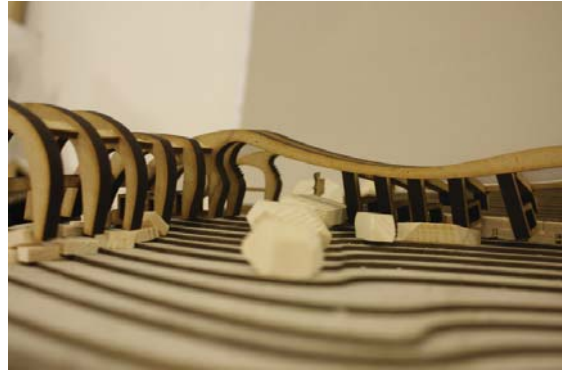


























## OPPDELT STUKTUR boksene

### dynamiske romopplevelser

- inne
- ute
- mellom

### fleksibelt

- kan flys inn
- flere kobles sammen for større enheter

8m<sup>2</sup> per til regnvannsamling

- gir 1000liter(ca) per mnd(?)

oppvarmingseffektivt

mye ytterflate

forskjellige gløtt

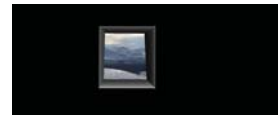
program: selvbetjent turisthytte

30 sengeplasser

ankomme  
sette sekk/ ski  
tørke klær  
vaske seg  
varme seg  
lage mat  
hvile  
gå videre



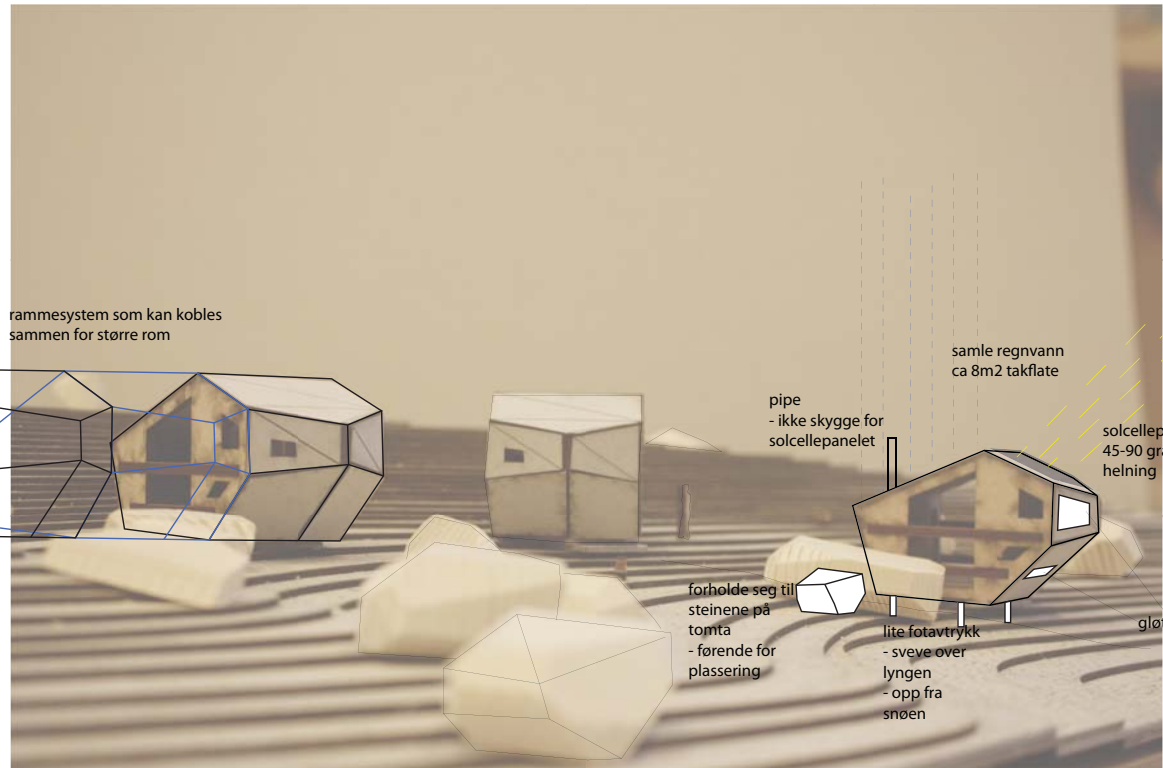
kebony kledning



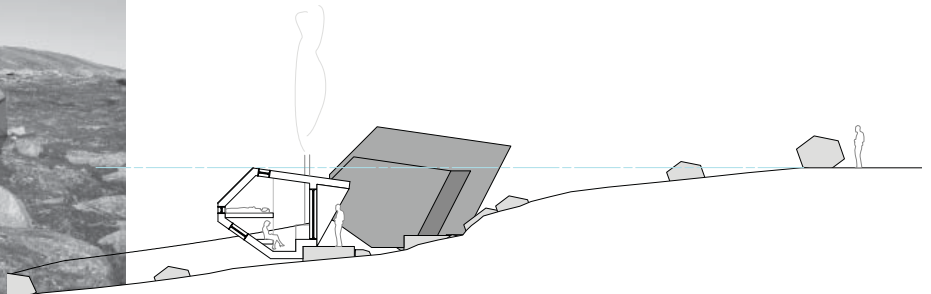
hvordan ta hull/ lage gløtt



hvordan ta hull/ lage gløtt

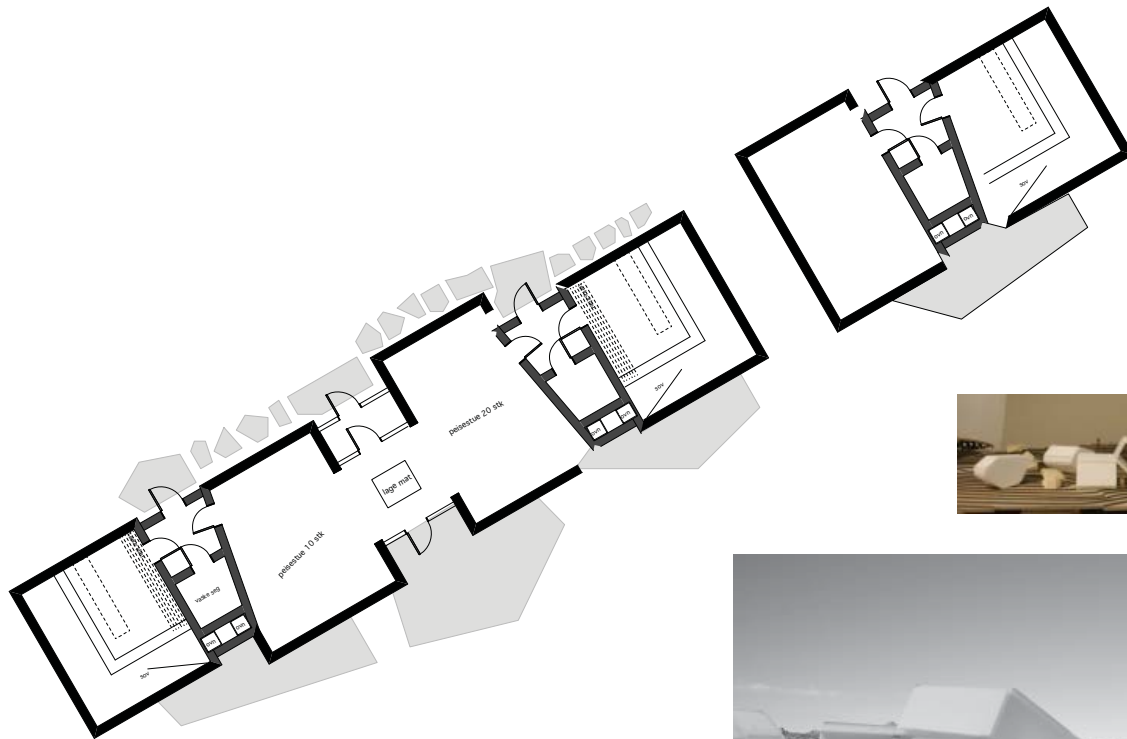






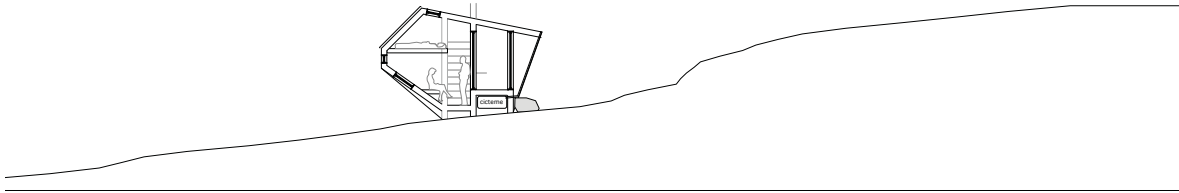
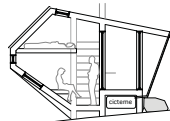
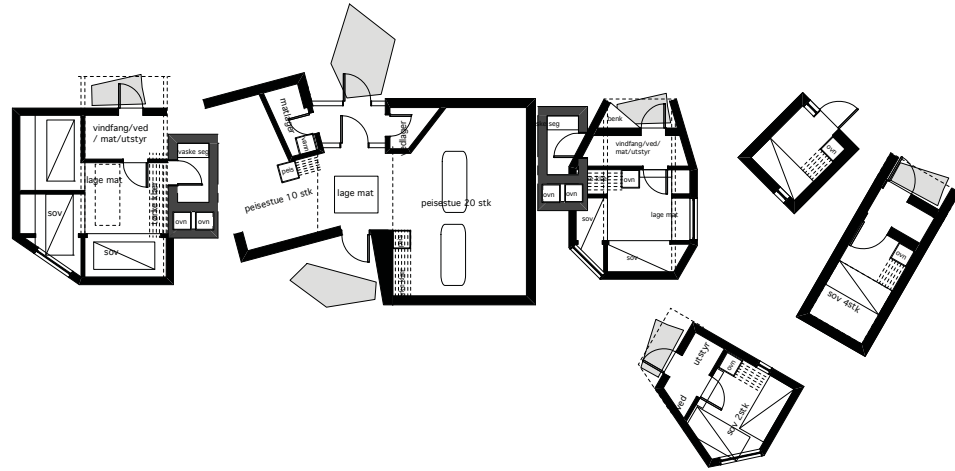














**OPPDELT STRUKTUR**  
samlende tak

tørreskodd fra boks til boks

uterom under tak

stor takflate til regnvannsamling

tatt av vinden?

komplisert?

stor takflate for regnvann  
til cicterne

hull i tak  
- stjernegløtt  
- solgløtt  
- slipper vinden

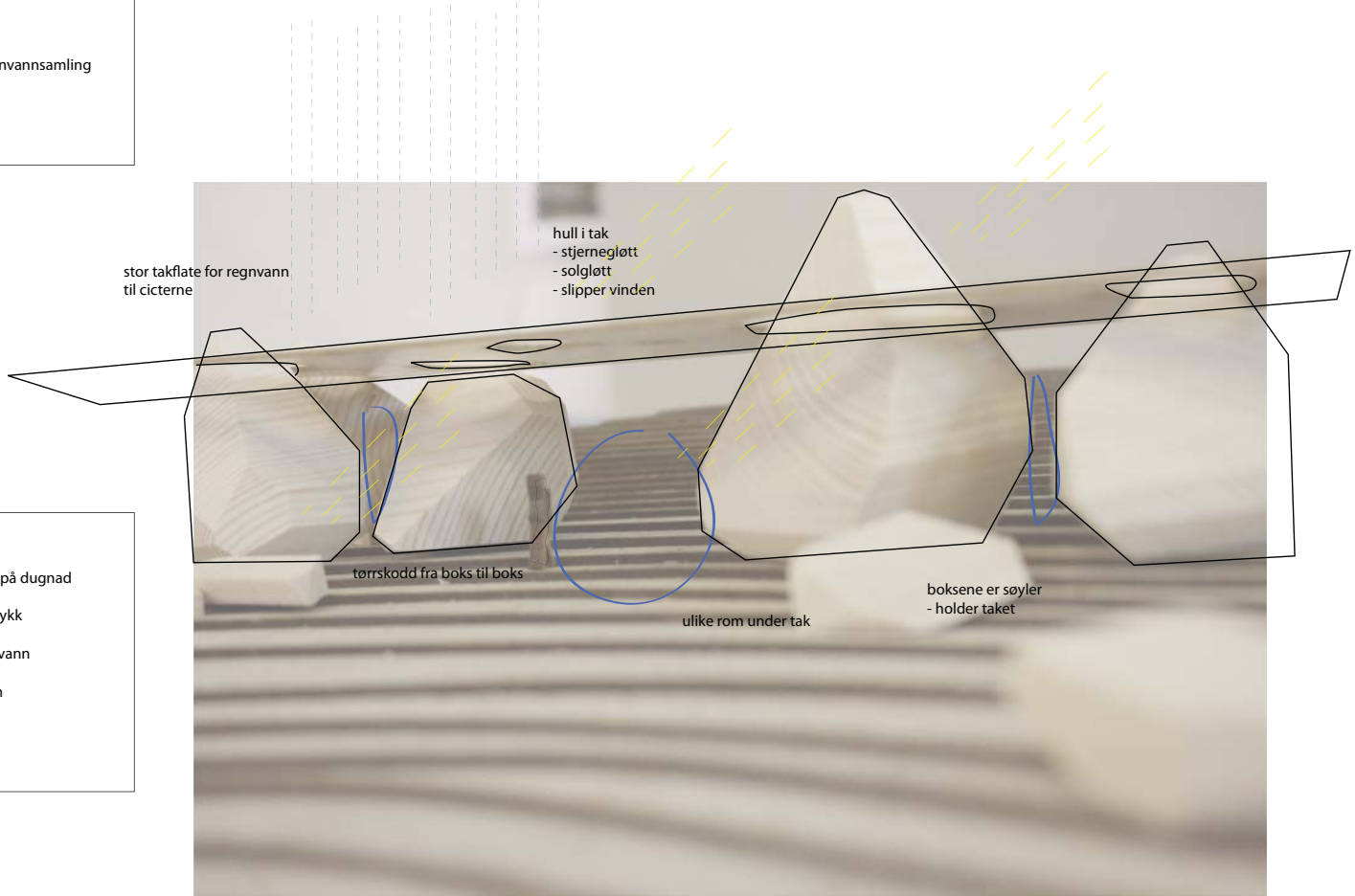
tørreskodd fra boks til boks

ulike rom under tak

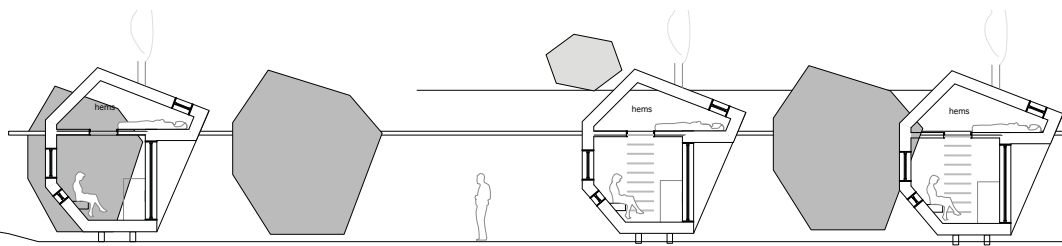
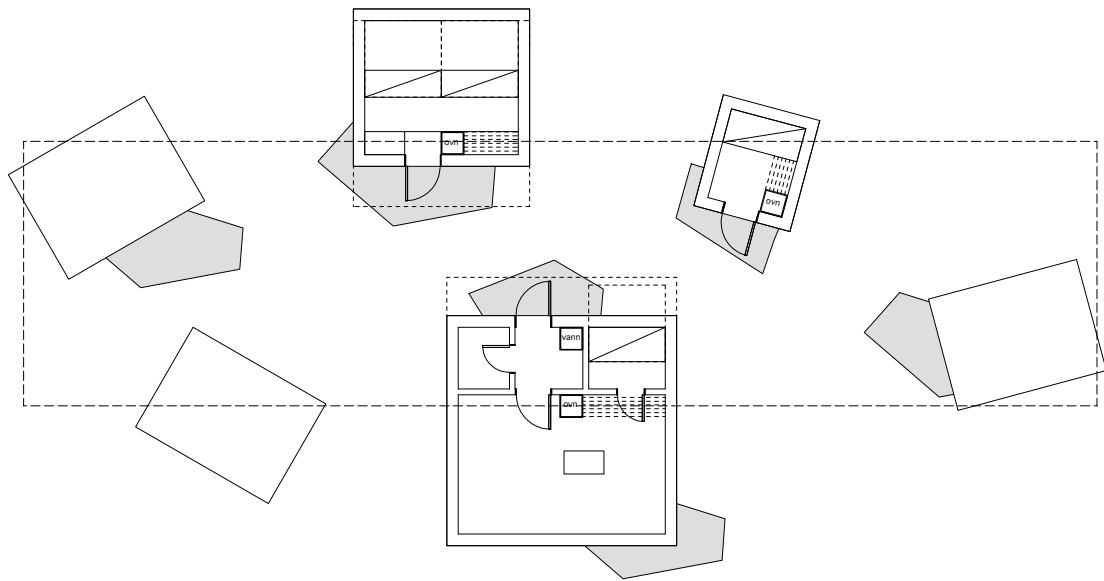
boksene er søyler  
- holder taket

**SPILLEREGLER**

- kunne oppføres på dugnad
- minimalt fotavtrykk
- selvforsynt med vann
- solenergi til støm
- 
- 







59





